
SERVICE BULLETIN

N° **139-774**

OPTIONAL

DATE: December 6, 2023

REV. : /

TITLE

ATA 53 - REMOVABLE PANELS RETRO MOD INSTALLATION

REVISION LOG

First Issue

1. PLANNING INFORMATION

A. EFFECTIVITY

AW139 S/N 31241.

B. COMPLIANCE

At Customer's option.

C. CONCURRENT REQUIREMENTS

N.A.

D. REASON

This Service Bulletin is issued in order to provide the necessary instruction on how to perform the removable panels retro mod P/N 3G5306P14711.

LH issued this SB for the following reason:

Helicopter Reliability/Maintainability	
Product Improvement	
Obsolescence	
Customization	✓
Product/Capability Enhancement	

E. DESCRIPTION

This Service Bulletin provide the instructions on how to perform the removable panels retro mod P/N 3G5306P14711, which consists in the structural provision to allow the installation of the seat track P/N 3G5332A04351 on the rear panel assy.

F. APPROVAL

The technical content of this Service Bulletin is approved under the authority of DOA nr. EASA.21.J.005. For helicopters registered under other Aviation Authorities, before applying the Service Bulletin, applicable Aviation Authority approval must be checked within Leonardo Helicopters customer portal.

EASA states mandatory compliance with inspections, modifications or technical directives and related time of compliance by means of relevant Airworthiness Directives.

If an aircraft listed in the effectivity embodies a modification or repair not LHD certified and affecting the content of this Service Bulletin, it is responsibility of the

Owner/Operator to obtain a formal approval by Aviation Authority having jurisdiction on the aircraft, for any adaptation necessary before incorporation of the present Service Bulletin.

G. MANPOWER

To comply with this Service Bulletin 16 (sixteen) MMH are deemed necessary. MMH are based on hands-on time and can change with helicopter configuration, personnel and facilities available. MMH are not comprehensive of the overall hours necessary to get access to work areas and to remove all the equipment that interferes with the application of the prescribed instructions.

H. WEIGHT AND BALANCE

WEIGHT (kg)	ARM (mm)	MOMENT (kg·mm)
LONGITUDINAL BALANCE	3973	8740,6
LATERAL BALANCE	0	0

I. REFERENCES

I.1 PUBLICATIONS

Following Data Modules refer to AMP:

<u>DATA MODULE</u>	<u>DESCRIPTION</u>	<u>PART</u>
DM01 39-A-00-20-00-00A-120A-A	Helicopter safety - Pre-operation.	-
DM02 39-A-06-41-00-00A-010A-A	Access doors and panels - General data.	-

I.2 ACRONYMS & ABBREVIATIONS

AMDI	Aircraft Material Data Information
AMP	Aircraft Maintenance Publication
AR	As Required
DM	Data Module
DOA	Design Organization Approval
EASA	European Aviation Safety Agency
IPD	Illustrated Parts Data
ITEP	Illustrated Tools and Equipment Publication
LH	Leonardo Helicopters
MMH	Maintenance Man Hours
N.A.	Not Applicable
P/N	Part Number

SB Service Bulletin

S/N Serial Number

I.3 ANNEX

N.A.

J. PUBLICATIONS AFFECTED

N.A.

K. SOFTWARE ACCOMPLISHMENT SUMMARY

N.A.

2. MATERIAL INFORMATION

A. REQUIRED MATERIALS

A.1 PARTS

#	P/N	ALTERNATIVE P/N	DESCRIPTION	Q.TY	LVL	NOTE	LOG P/N
1	3G5306P14711		REMOVABLE PANELS RETRO MOD	REF	.		-
2	3G5332A04351		Seat track	1	..		139-774L1
3	3P5331A79051		Angle	2	..		139-774L1
4	3P5331A79151		Plate	2	..		139-774L1
5	999-5000-40-124	AW007TE-40-124	Insert	28	..		139-774L1
6	A900A3E3-03		Nut	4	..		139-774L1
7	MS21061L3		Nut	2	..		139-774L1
8	MS24694-S51		Screw	4	..		139-774L1
9	MS24694-S53		Screw	2	..		139-774L1
10	MS24694-S98		Screw	28	..		139-774L1
11	NAS1097AD3-5A		Rivet	0.1 kg	..		139-774L1
12	NAS1097AD4-5A		Rivet	0.1 kg	..		139-774L1
13	NAS9301B-4-03		Rivet	4	..		139-774L1

Refer also to IPD for the spares materials required to comply with the AMP DMs referenced in the accomplishment instructions.

A.2 CONSUMABLES

The following consumable materials, or equivalent, are necessary to accomplish this Service Bulletin:

#	SPEC./LHD CODE NUMBER	DESCRIPTION	Q.TY	NOTE	PART
14	199-05-002 TY I, CL 2	Adhesive Hysol EA9309NA (C231)	AR	(1)	-
15	199-05-002 TY II, CL 2	Adhesive EA 934 NA AERO (C397)	AR	(1)	-

Refer also to AMDI for the consumable materials required to comply with the AMP DMs referenced in the accomplishment instructions.

A.3 LOGISTIC MATRIX

In order to apply this Service Bulletin, the following Logistic P/N can be ordered in accordance with the applicable notes:

LOGISTIC P/N	Q.TY (PER HELO)	NOTE	PART
139-774L1	1	-	-

NOTES

(1) Item to be procured as local supply.

B. SPECIAL TOOLS

Refer also to ITEP for the special tools required to comply with the AMP DMs referenced in the accomplishment instructions.

C. INDUSTRY SUPPORT INFORMATION

Customization.

3. ACCOMPLISHMENT INSTRUCTIONS

GENERAL NOTES

- a) Place an identification tag on all components that are re-usable, including the attaching hardware that has been removed to gain access to the modification area and adequately protect them until their later re-use.
 - b) Exercise extreme care during drilling operations to prevent instruments, cables and hoses damage.
 - c) After drilling, remove all swarf and sharp edges. Apply on bare metal a light film of primer unless the hole is used for ground connection.
 - d) Let adhesive cure at room temperature for at least 24 hours unless otherwise specified.
 - e) Exposed thread surface and nut must be protected using a layer of tectyl according to MIL-C-16173 grade I.
 - f) All lengths are in mm.
1. In accordance with AMP DM 39-A-00-20-00-00A-120A-A, prepare the helicopter on ground for a safe maintenance. Disconnect the battery, all electrical power sources and/or the external power supply.
 2. In accordance with AMP DM 39-A-06-41-00-00A-010A-A and with reference to Figures 1 thru 3, remove all external panels, internal panels and internal liners as required to gain access to the area affected by the installation and perform the removable panels retromod installation P/N 3G5306P14711 as described in the following procedure:
 - 2.1 With reference to Figure 2 Section B-B, remove the existing screw and the anchor nut P/N A900A3C2-03 from the structure.
 - 2.2 With reference to Figure 2 Section B-B, install the anchor nut P/N MS21061L3 (use existing hole $\varnothing 5.74 \div 5.86$) on the structure in the same position by means of n°2 rivets P/N NAS1097AD3-5A.
 - 2.3 With reference to Figure 2 Section B-B, remove the existing rivet from the structure in the position indicated and fill existing hole by means of adhesive Hysol EA9309NA (C231).
 - 2.4 With reference to Figure 2 Section B-B, repeat steps from 2.1 to 2.3 on the opposite side.

- 2.5 With reference to Figure 1 View A and Figure 2 Detail C, remove n°4 screws P/N MS27039-1-09 and n°4 washers P/N NAS1149A0316K from the rear panel assy and install n°4 screws P/N MS24694-S51 in the same position.
 - 2.6 With reference to Figure 1 View A, drill n°4 holes $\varnothing 3.27 \div 3.35$ thru the structure and install n°4 rivets P/N NAS1097AD4-5A in the positions indicated.
 - 2.7 With reference to Figure 1 View A and Figure 3 Section D-D, drill n°28 holes $\varnothing 6.45 \div 6.75$ thru the rear panel assy in accordance with the dimensions shown.
 - 2.8 With reference to Figure 3 Section D-D, countersink the internal skin of the n°28 holes previously performed up to $\varnothing 9.50 \div 9.60$.
 - 2.9 With reference to Figure 1 View A and Figure 3 Section D-D, install n°28 inserts P/N 999-5000-40-124 by means of adhesive EA 934NA AERO (C397).
 - 2.10 With reference to Figure 3 View E, install the plate P/N 3P5331A79151 on the structure in accordance with the dimensions shown by means of adhesive Hysol EA930NA (C231).
 - 2.11 With reference to Figure 3 View E, drill n°2 holes $\varnothing 3.27 \div 3.35$ thru the structure using the existing positions.
 - 2.12 With reference to Figure 3 View E, install the angle P/N 3P5331A79051 on the structure by means of n°2 rivets P/N NAS9301B-4-03 and the adhesive Hysol EA9309NA (C231).
 - 2.13 With reference to Figure 3 View E, install n°2 anchor nuts P/N A900A3E3-03 in the indicated positions.
 - 2.14 With reference to Figure 3 View E, repeat steps from 2.10 to 2.13 on the opposite side.
 - 2.15 With reference to Figure 1 View A, Figure 2 Section B-B and Figure 3 Section D-D, install the seat track P/N 3G5332A04351 by means of n°28 screws P/N MS24694-S98 and n°2 screws P/N MS24694-S53.
3. In accordance with AMP DM 39-A-06-41-00-00A-010A-A, re-install all external panels, internal panels and internal liners previously removed.
 4. In accordance with weight and balance changes, update the Chart A (see Rotorcraft Flight Manual, Part II, section 6).
 5. Return the helicopter to flight configuration and record for compliance with this Service Bulletin on the helicopter logbook.
 6. Gain access to My Communications section on Leonardo WebPortal and compile the "Service Bulletin Application Communication".

As an alternative, send the attached compliance form to the following mail box:

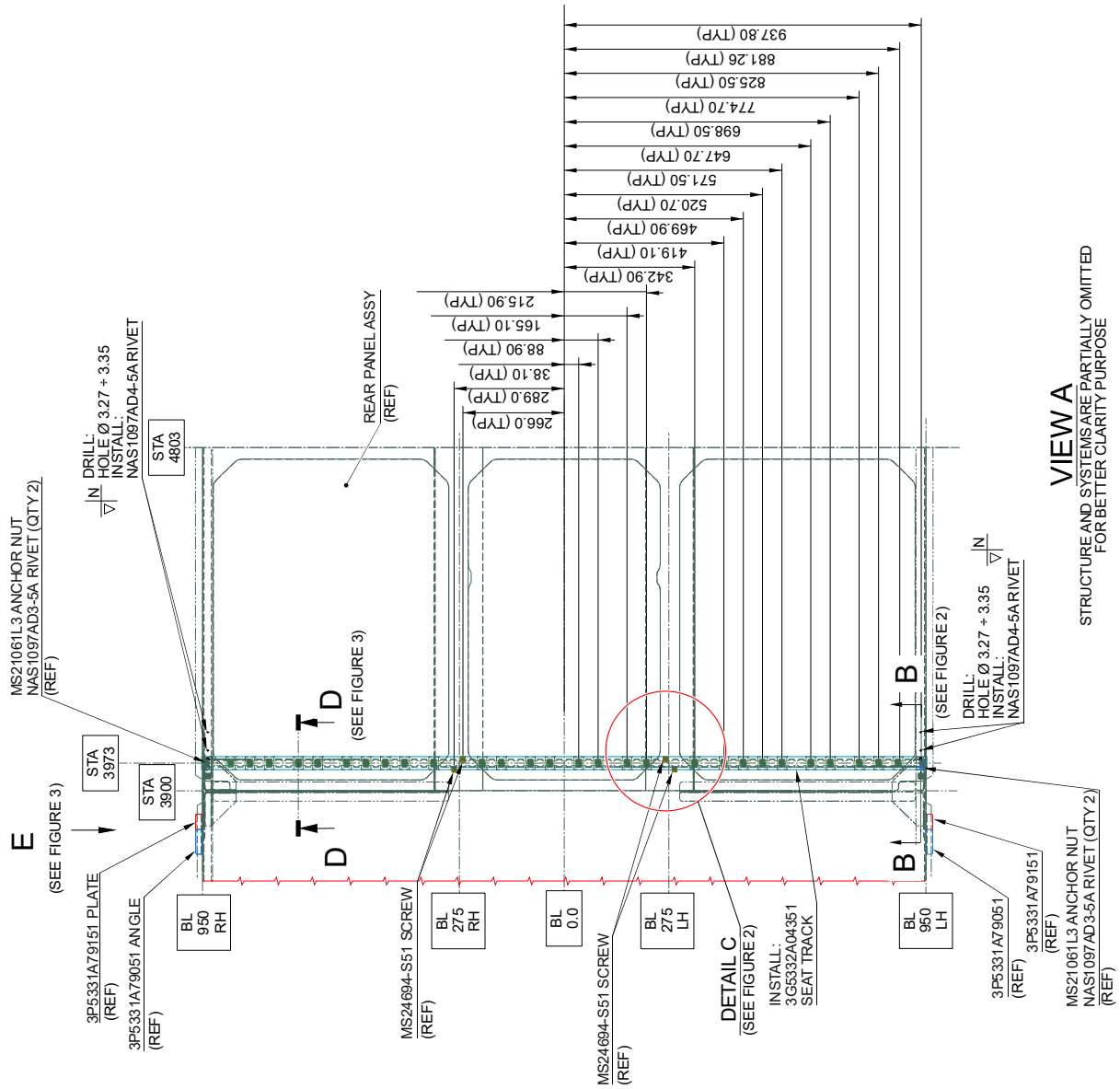
engineering.support.lhd@leonardo.com

and (for North, Central and South America) also to:

S.B. N°139-774 OPTIONAL
DATE: December 6, 2023
REVISION: /

AWPC.Engineering.Support@leonardocompany.us

REMOVABLE PANELS RETROMOD
3G5306P14711



VIEW A
STRUCTURE AND SYSTEMS ARE PARTIALLY OMITTED
FOR BETTER CLARITY PURPOSE

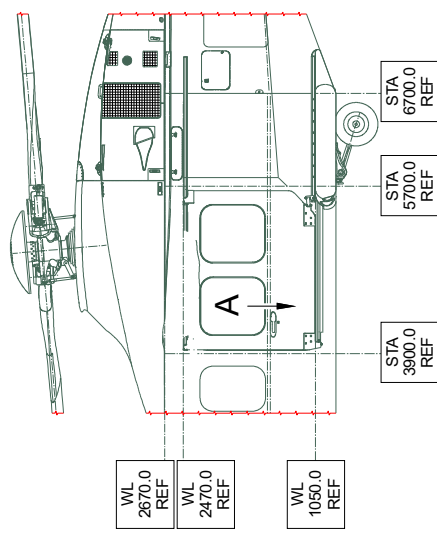
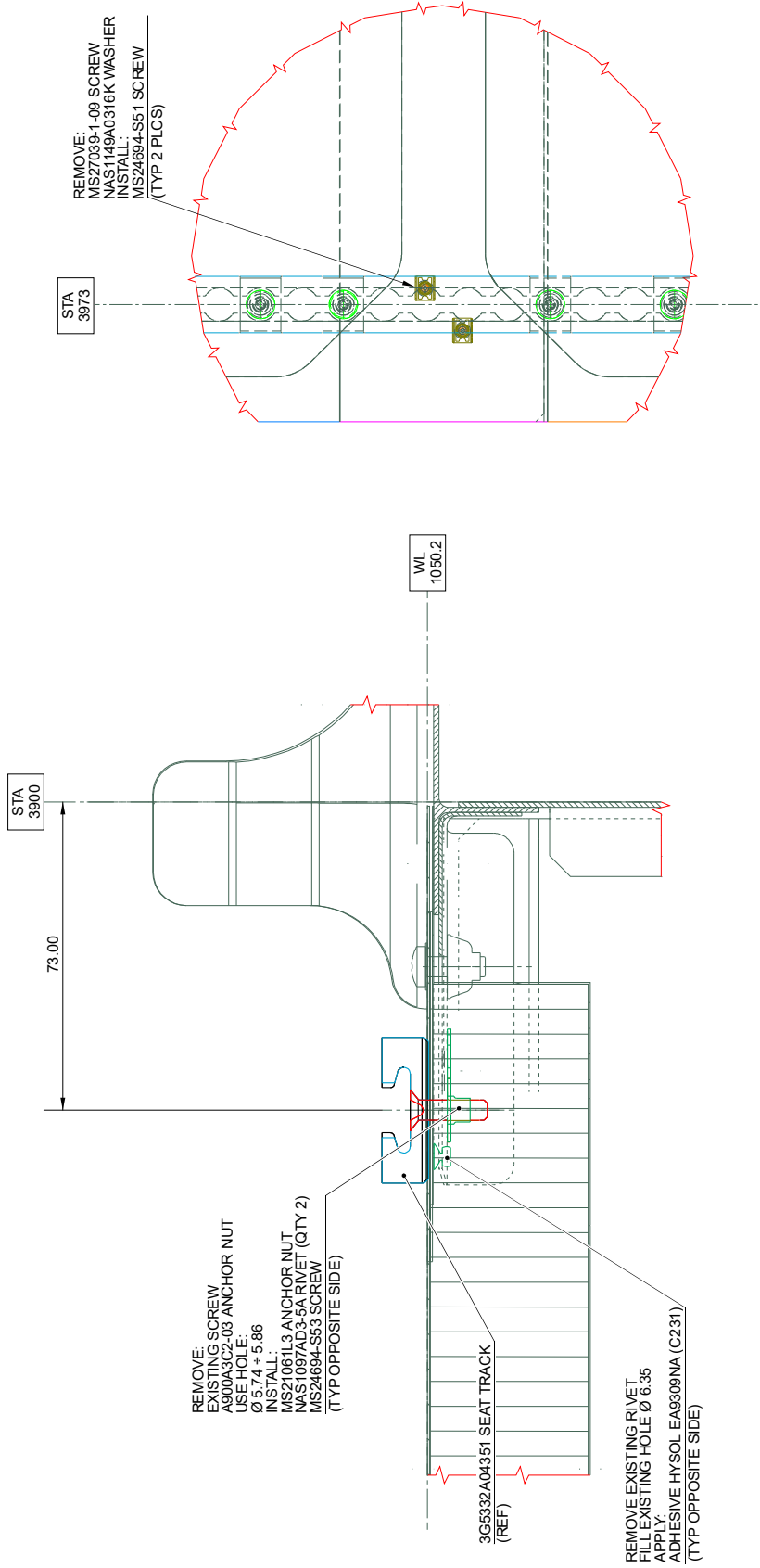


Figure 1



SECTION B-B
STRUCTURE AND SYSTEMS ARE PARTIALLY
OMITTED FOR BETTER CLARITY PURPOSE
(REFER TO FIGURE 1)

DETAIL C
(TYP 2 PLCS)
STRUCTURE AND SYSTEMS ARE PARTIALLY
OMITTED FOR BETTER CLARITY PURPOSE
(REFER TO FIGURE 1)

Figure 2

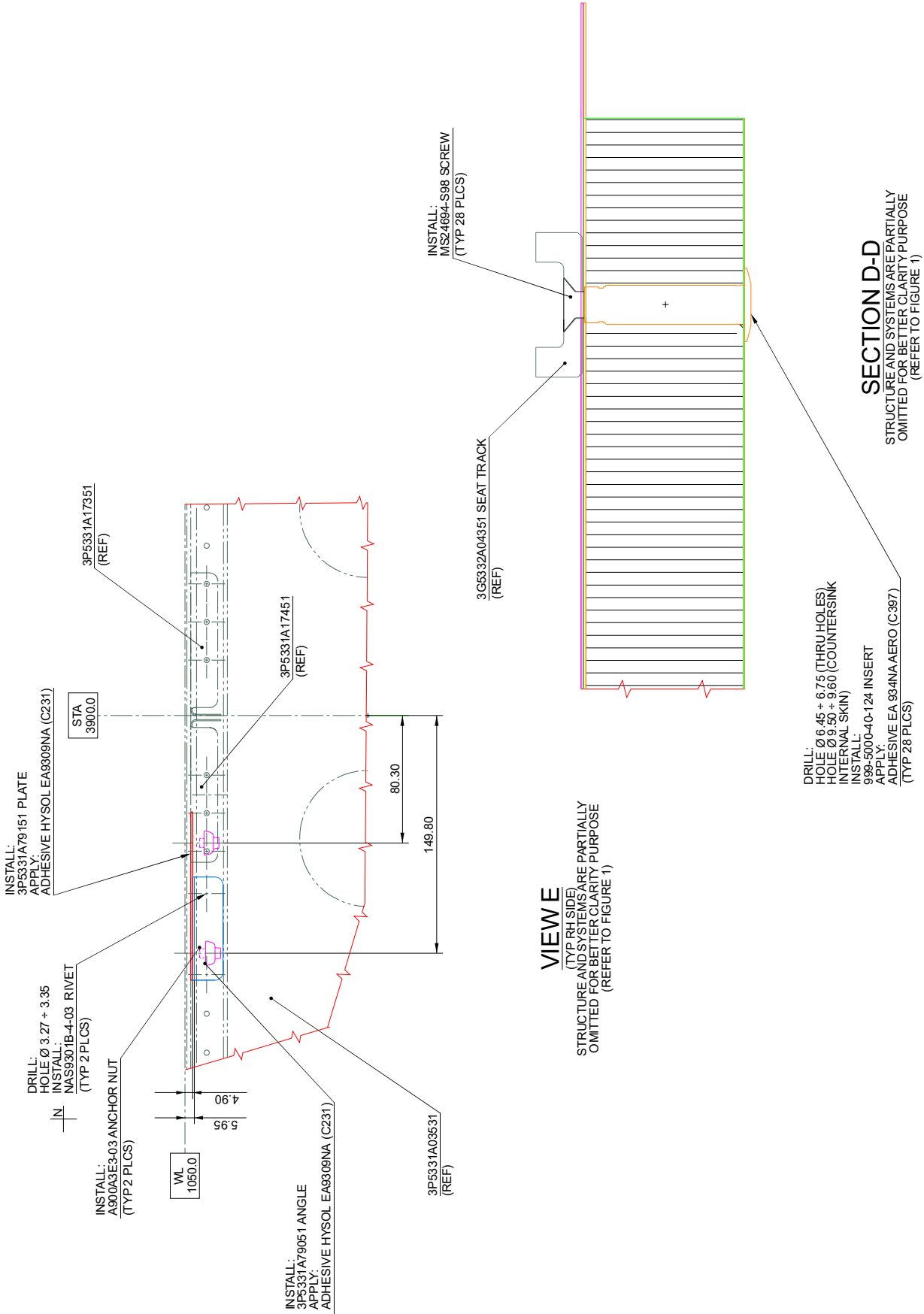


Figure 3

Please send to the following address: LEONARDO S.p.A. CUSTOMER SUPPORT & SERVICES - ITALY PRODUCT SUPPORT ENGINEERING & LICENSES DEPT. Via Giovanni Agusta, 520 21017 Cascina Costa di Samarate (VA) - ITALY Tel.: +39 0331 225036 Fax: +39 0331 225988		SERVICE BULLETIN COMPLIANCE FORM		Date:
		Number:		
		Revision:		
Customer Name and Address:		Telephone:		
		Fax:		
		B.T. Compliance Date:		
Helicopter Model	S/N	Total Number	Total Hours	T.S.O.
Remarks:				
Information: We request your cooperation in filling this form, in order to keep out statistical data relevant to aircraft configuration up-to-date. The form should be filled in all its parts and sent to the above address or you can communicate the application also via Technical Bulletin Application Communication Section placed in Leonardo AW Customer Portal - MyCommunications Area. We thank you beforehand for the information given.				