
SERVICE BULLETIN
OPTIONAL**N° 139-371****DATE:** May 9, 2014**REV. :** A - August 4, 2023

TITLE**ATA 25 – INSTALLATION OF HOIST PENDANT VARIANT P/N 3G2591A08211****REVISION LOG**

Helicopters already compliant with previous issues of this Service Bulletin do not need any additional action.

Revision A is issued in order to introduce the following changes:

- update the effectivity;
- update the Service Bulletin to the latest standard.

Due to the large amount of modifications introduced in this new revision, revision bars are not shown.

1. PLANNING INFORMATION

A. EFFECTIVITY

All AW139 helicopters from S/N 31201 to S/N 31398 and from S/N 41201 to S/N 41293, equipped with hoist complete provision P/N 4G2591A01011 (double hoist) or P/N 4G2591A01111 (single hoist) and track P/N 3G5330A01251 (STA3900).

All AW139 helicopters from S/N 31400 to S/N 31699 and from S/N 41300 to S/N 41499, equipped with hoist complete provision P/N 4G2591A01012 (double hoist) or P/N 4G2591A01112 (single hoist) and track P/N 3G5330A01251 (STA3900).

All AW139 helicopters from S/N 31700 onward and from S/N 41501 onward, equipped with hoist complete provision P/N 4G2591A01013 (double hoist) or P/N 4G2591A01113 (single hoist) and track P/N 3G5330A01251 (STA3900).

B. COMPLIANCE

At Customer's option.

C. CONCURRENT REQUIREMENTS

N.A.

D. REASON

This Service Bulletin is issued in order to provide all necessary instructions on how to perform the installation of hoist pendant variant P/N 3G2591A08211.

LH issued this SB for the following reason:

Helicopter Reliability/Maintainability	
Product Improvement	
Obsolescence	
Customization	✓
Product/Capability Enhancement	

E. DESCRIPTION

The hoist pendant variant P/N 3G2591A08211 consists of a new pendant support on the passenger door frame. The new support is intended to be used during hoist operation to hold the pendant in a position easier to be reached.

F. APPROVAL

The technical content of this Service Bulletin is approved under the authority of DOA nr. EASA.21.J.005. For helicopters registered under other Aviation Authorities, before applying the Service Bulletin, applicable Aviation Authority approval must be checked within Leonardo Helicopters customer portal.

EASA states mandatory compliance with inspections, modifications or technical directives and related time of compliance by means of relevant Airworthiness Directives.

If an aircraft listed in the effectivity embodies a modification or repair not LHD certified and affecting the content of this Service Bulletin, it is responsibility of the Owner/Operator to obtain a formal approval by Aviation Authority having jurisdiction on the aircraft, for any adaptation necessary before incorporation of the present Service Bulletin.

G. MANPOWER

To comply with this Service Bulletin approximately two (2) MMH are deemed necessary.

MMH are based on hands-on time and can change with helicopter configuration, personnel and facilities available. MMH are not comprehensive of the overall hours necessary to get access to work areas and to remove all the equipment that interferes with the application of the prescribed instructions.

H. WEIGHT AND BALANCE

WEIGHT (kg)	ARM (mm)	MOMENT (kg-mm)
		0.257
LONGITUDINAL BALANCE	3962	1018.2

I. REFERENCES

I.1 PUBLICATIONS

Following Data Modules refer to AMP:

<u>DATA MODULE</u>	<u>DESCRIPTION</u>	<u>PART</u>
DM01 39-A-00-20-00-00A-120A-A	Helicopter on ground for a safe maintenance	-
DM02 39-A-06-41-00-00A-010A-A	Access doors and panels - General data	-
DM03 39-A-52-15-01-00A-520A-K	Forward handle - Remove procedure	-
DM04 39-A-52-15-01-00A-720A-K	Forward handle - Install procedure	-

I.2 ACRONYMS & ABBREVIATIONS

AMDI	Aircraft Material Data Information
AMP	Aircraft Maintenance Publication
AR	As Required
DM	Data Module
DOA	Design Organization Approval
EASA	European Aviation Safety Agency
FWD	Forward
IPD	Illustrated Part Data
ITEP	Illustrated tool and equipment publication
LH	Left Hand
LHD	Leonardo Helicopters Division
MMH	Maintenance Man Hours
N.A.	Not Applicable
P/N	Part Number
RH	Right Hand
SB	Service Bulletin
S/N	Serial Number

I.3 ANNEX

N.A.

J. PUBLICATIONS AFFECTED

AW139 Illustrated Parts Data (IPD)

AW139 Aircraft Maintenance Publication (AMP)

K. SOFTWARE ACCOMPLISHMENT SUMMARY

N.A.

2. MATERIAL INFORMATION

A. REQUIRED MATERIALS

A.1 PARTS

#	P/N	ALTERNATIVE P/N	DESCRIPTION	Q.TY	LVL	NOTE	LOG P/N
1	3G2591A08211		HOIST PENDANT INSTALLATION VARIANT	REF	.		-
2	3G2591A08131		Pendant support assy	1	..		139-371L1
3	40351-10		Bracket	2	..		139-371L1
4	42325-779		Slide bracket	1	..		139-371L1
5	MS24693-S272		Screw	4	..		139-371L1

Refer also to IPD for the spares materials required to comply with the AMP DMs referenced in the accomplishment instructions.

A.2 CONSUMABLES

Refer to AMDI for the consumable materials required to comply with the AMP DMs referenced in the accomplishment instructions.

A.3 LOGISTIC MATRIX

In order to apply this Service Bulletin, the following Logistic P/N can be ordered in accordance with the applicable notes:

LOGISTIC P/N	Q.TY (PER HELO)	NOTE	PART
139-371L1	1		-

NOTES

(1) Item to procured as local supply.

B. SPECIAL TOOLS

Refer to ITEP for the special tools required to comply with the AMP DMs referenced in the accomplishment instructions.

C. INDUSTRY SUPPORT INFORMATION

Customization.

3. ACCOMPLISHMENT INSTRUCTIONS

GENERAL NOTES

- a) Place an identification tag on all components that are re-usable, including the attaching hardware that has been removed to gain access to the modification area and adequately protect them until their later re-use.
 - b) Protect properly all equipment not removed from area affected by the modification during installation procedure.
 - c) All lengths are in mm.
1. In accordance with AMP DM 39-A-00-20-00-00A-120A-A, prepare the helicopter on ground for a safe maintenance. Disconnect the battery, all electrical power sources and/or the external power supply.
 2. In accordance with AMP DM 39-A-06-41-00-00A-010A-A and with reference to Figure 1, remove all external panels, internal panels and internal liners as required to gain access to the area affected by the installation and perform the hoist pendant installation variant P/N 3G2591A08211 as described in the following procedure:

NOTE

Perform steps 2.1 and 2.2 if helicopter is equipped with kit removable rigid handle passenger RH P/N 4G5212F00611, otherwise skip to step 2.3.

- 2.1 In accordance with AMP DM 39-A-52-15-01-00A-520A-K and with reference to Figure 1 View B, temporarily remove the passenger RH handle, retain all attaching hardware for later reuse.
 - 2.2 In accordance with AMP DM 39-A-52-15-01-00A-720A-K and with reference to Figure 1 View B, reinstall the passenger RH handle 50.8 mm lower on the tie down fitting frame track P/N 3G5330A01251, by means of the existing hardware.
 - 2.3 With reference to Figure 1 View B, install pendant support assy P/N 3G2591A08131 by means of n°2 brackets P/N 40351-10.
 - 2.4 With reference to Figure 1 View B, install on pendant support assy the slide bracket P/N 42325-779 by means of n°4 screws P/N MS24693-S272.
3. In accordance with weight and balance changes, update the Chart A (see Rotorcraft Flight Manual, Part II, section 6).

4. Return the helicopter to flight configuration and record for compliance with this Service Bulletin on the helicopter logbook.
5. Gain access to My Communications section on Leonardo WebPortal and compile the "Service Bulletin Application Communication".

As an alternative, send the attached compliance form to the following mail box:

engineering.support.lhd@leonardo.com

and (for North, Central and South America) also to:

AWPC.Engineering.Support@leonardocompany.us

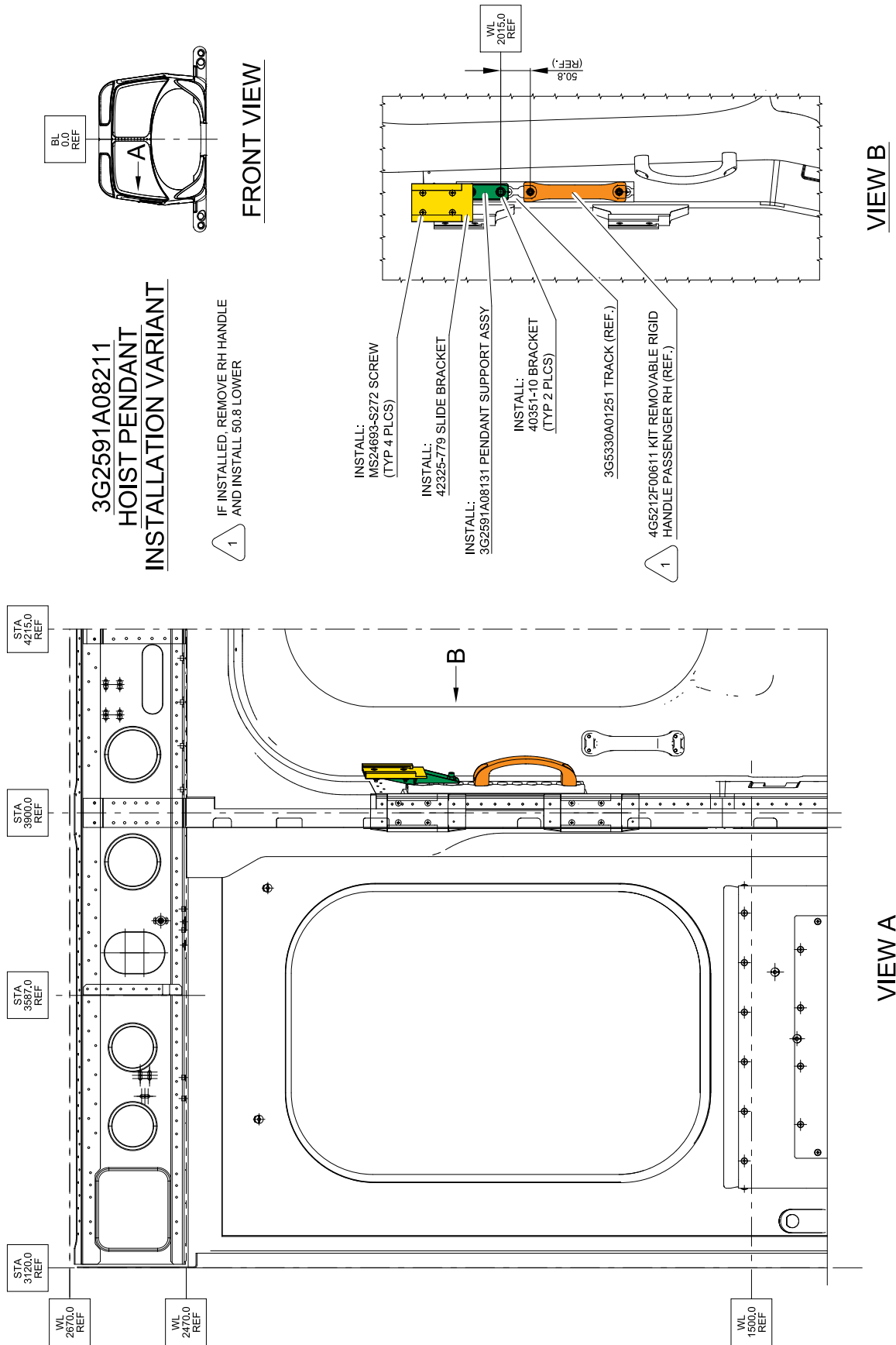


Figure 1

S.B. N°139-371 OPTIONAL
DATE: May 9, 2014
REVISION: A - August 4, 2023

Please send to the following address: LEONARDO S.p.A. CUSTOMER SUPPORT & SERVICES - ITALY PRODUCT SUPPORT ENGINEERING & LICENSES DEPT. Via Giovanni Agusta, 520 21017 Cascina Costa di Samarate (VA) - ITALY Tel.: +39 0331 225036 Fax: +39 0331 225988		SERVICE BULLETIN COMPLIANCE FORM		Date:	
		Number:			
		Revision:			
Customer Name and Address:			Telephone:		
			Fax:		
			B.T. Compliance Date:		
Helicopter Model	S/N	Total Number	Total Hours	T.S.O.	
Remarks:					
Information: We request your cooperation in filling this form, in order to keep out statistical data relevant to aircraft configuration up-to-date. The form should be filled in all its parts and sent to the above address or you can communicate the application also via Technical Bulletin Application Communication Section placed in Leonardo AW Customer Portal - MyCommunications Area. We thank you beforehand for the information given.					