

SERVICE BULLETIN

TITLE: Extinguishing - Installation of the Cabin fire extinguisher without Halon

SB Type: Corrective measure

APPLICABILITY

Model:	AS365
Version:	N, N1, N2 ,N3
Helicopters PRE MOD:	MC26B35
Helicopters POST MOD:	MC26B29 or MC26B37

Helicopters having received MOD MC26B31 and MC26B33 are not concerned
Helicopters PRE MOD MC26B29 or MC26B37, refer to Chapter 4

COMPLIANCE: RECOMMENDED

Airbus Helicopters recommends that you comply with this Service Bulletin

SUMMARY

The purpose of this Service Bulletin is to replace the fire extinguisher in the cabin with one that does not contain Halon to comply with the new regulations which will be applicable from 2026.

GENERAL EVALUATION

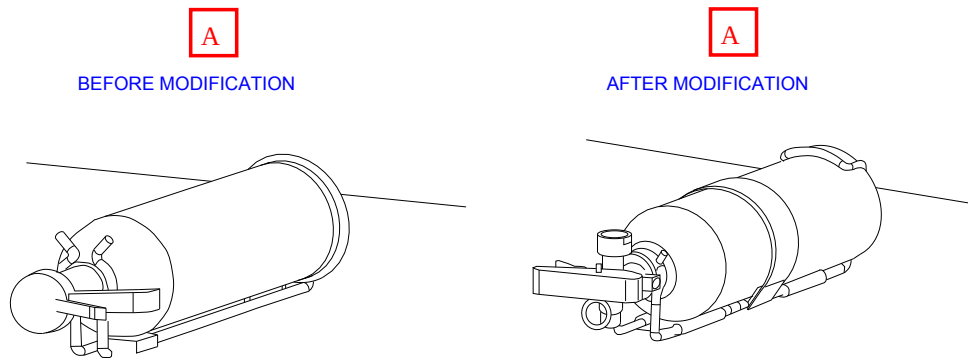
Evaluation table			
Perform once	YES	Accomplish recurring	NO

Export Control:

US Export Control - No US content. This Item does not contain any U.S. origin ITAR or EAR content.

FR Export Control - Not Listed. This Item is not listed against the EC regulations in the EU/FR

GENERAL ILLUSTRATION



PLANNING INFORMATION

1. REASON

The purpose of this Service Bulletin is to replace the fire extinguisher in the cabin with one that does not contain Halon to comply with the new regulations which will be applicable from 2026. To do so, replace the SICLI cabin extinguisher H1-10 or the HOTELIER cabin extinguisher 12085-01 and its support 14561-00 with the new HAFEX UL extinguisher reference P3APP003010D and its new support P3APP003020J.

2. DESCRIPTION

This Service Bulletin provides instructions according to the device position (1 through 13) to:

- Remove the cabin fire extinguisher and bracket (HOTELIER or SICLI)
- Install the new cabin fire extinguisher and bracket (HAFEX UL)

3. CONFIGURATION DEFINITION

Not applicable.

4. CONCURRENT REQUIREMENTS

For helicopters PRE MOD MC26B29 or MC26B37, this SB can be applied but MOD MC26B29 also needs to be recorded on the helicopter documents for administrative purposes to ensure configuration follow-up.

5. APPROVAL

The technical content of this document is approved under the authority of the Design Organization Approval ref. EASA. 21J.700. For helicopters operated outside the terrain regulated by the EASA, the application of this document is subject to validation provided by the responsible aviation authority of the state of registry.

The technical content of this document is approved under the prerogatives of the recognition of design capability ref. EMAR21J-015-DGA for French Government helicopters.

6. MANPOWER

NOTE

The Purpose of Man Hours is to give Airbus Helicopters customers a guideline for maintenance scheduling. It is not a contractual information.

Number of Persons	Qualification	Estimated Man Hours
1	Airframe technician	1h

7. Weight and balance

Table 1 = Weight and balance according to Extinguisher installed on the cabin floor directly

POSITION	Weight (kg)	Lateral moment (kg.m) X	Longitudinal moment (kg.m) Y
1	+0.488 kg	-0.41 kg.m	+ 1.43 kg.m
2	+0.488 kg	+0.33 kg.m	+ 1.81 kg.m
3	+0.488 kg	0 kg.m	+ 1.85 kg.m
4	+0.488 kg	0 kg.m	+ 1.15 kg.m
5	+0.412 kg	0 kg.m	+ 1.07 kg.m
6	+ 0.488 kg	-0.38 kg.m	+ 1.16 kg.m
7	+0.412 kg	0 kg.m	+ 1.16 kg.m
8	+0.488 kg	0 kg.m	+ 1.23 kg.m

Table 2 = Weight and balance according to Extinguisher installed on the floor with specific interface

POSITION	Weight (kg)	Lateral moment (kg.m) X	Longitudinal moment (kg.m) Y
9	+0.400 kg	+0.14 kg.m	+ 1.39 kg.m
10	+0.360 kg	+0.11 kg.m	+ 1.43 kg.m
11	+0.360 kg	+0.16 kg.m	+ 1.08 kg.m

Table 3 = **Weight and balance according to Extinguisher installed on a box**

POSITION	Weight (kg)	Lateral moment (kg.m) X	Longitudinal moment (kg.m) Y
12	+0.400 kg	-0.27 kg.m	+ 0.99 kg.m

Table 4 = **Weight and balance according to Extinguisher installed on the 9° frame**

POSITION	Weight (kg)	Lateral moment (kg.m) X	Longitudinal moment (kg.m) Y
13	+0.400 kg	+0.28 kg.m	+ 1.32 kg.m

8. ELECTRICAL LOAD DATA

Not applicable.

9. DOCUMENTATION AFFECTED

- Illustrated Part Catalog (IPC)
- Aircraft Maintenance Manual (AMM)
- Master Servicing Manual (MSM)

The changes to Instructions for Continued Airworthiness (ICA) which are required as a result of this SB will be incorporated in the next Normal Revision. Refer to DN.105.0014 until the information is available in the published technical documentation.

10. MATERIAL INFORMATION

10.1. Price

For information about the price of the modification kits and/or components, or for aid, contact the Airbus Helicopters Network Sales and Customer Relations Department.

10.2. Availability

Contact the Sales and Customer Relations Department to know the delivery lead times.

10.3. Procurement

Send an order for the necessary quantities to the Airbus Helicopters Network Sales and Customer Relations Department:

You can send an order for the consumables from the AirbusWorld Marketplace through e-ordering. If you cannot get access to e-ordering, please contact your Logistic Focal Point.

10.4. Mixability

You must not use the PRE MOD and POST MOD components together.

10.5. LIST OF NEW MATERIALS

Individual Spares List				
Item	Designation	Reference	MFC	QTY
1	HAND FIRE-EXTINGUISHER BOTTLE	P3APP003010D	F0210	1
2	HAND FIRE EXTINGUISHER BRACKET	P3APP003020J	F0210	1
3	SPACER	350A77-2428-20	F0210	2
4	SPACER	365V87-0544-24	F0210	2
5	WASHER	23116TK040X	F0210	2
6	WASHER	23116TK050X	F0210	2
7	SUPPORT ASSY	365V87-0742-06	F0210	2
8	SCREW SIX LOBE RECESS	ECS2365TK04S8X	F0210	2
9	SCREW SIX LOBE RECESS	ECS2365TK05S10X	F0210	2
10	SCREW SIX LOBE RECESS	ECS2365TK05S14X	F0210	2
11	SCREW SIX LOBE RECESS	ECS2365TK05S16X	F0210	2
12	SCREW SIX LOBE RECESS	ECS2365TK04S22X	F0210	2

NOTE

The parts to be ordered depend on the position of the extinguisher in the cabin, listed as follows :

- Extinguisher installed on the cabin floor directly (Position 1 to 6) = ITEM 1, 2, 3, 5, 12.
- Extinguisher installed on the cabin floor directly (Position 7 and 8) = ITEM 1, 2, 4, 6, 11.
- Extinguisher installed on the floor with specific interface (Position 9 to 11) = ITEM 1, 2, 5, 6, 7, 8, 10, 11.
- Extinguisher installed on a box (Position 12) = ITEM 1, 2, 5, 6, 9.
- Extinguisher installed on the 9° frame (Position 13) = ITEM 1, 2, 5, 6, 11.

Consumables, Materials and Expendables			
Designation	Reference	MFC	QTY
Locking compound	CM 621	-	1

Special Tools				
Item	Designation	Reference	MFC	QTY
None				

10.6. LIST OF EXISTING PARTS

REMOVAL OF SPARE PARTS	
Old Reference	Designation
12085-01	HAND FIRE EXTINGUISHER BOTTLE
14561-00	HAND FIRE EXTINGUISHER BRACKET
H1-10	HAND FIRE EXTINGUISHER

11. ACCOMPLISHMENT INSTRUCTION

Comply with the accomplishment procedure [26-25-0002, 933](#)

12.ADDITIONAL INFORMATION

Not applicable.

End of section

ACCOMPLISHMENT PROCEDURE 26-25-0002, 933

1. APPLICABILITY

Model:	AS365
Version:	N, N1, N2 ,N3
Helicopters PRE MOD:	MC26B35
Helicopters POST MOD:	MC26B29 or MC26B37

2. GENERAL INFORMATION

Not applicable

3. PRELIMINARY REQUIREMENTS

3.1. Applicable Documents

- Helicopter parked in a repair shop - Safety instructions [MTC 20-07-02-201](#)
- ISO M and ISO MJ threads: General - Joining [MTC 20-02-05-101](#)
- Safeying assemblies: General - Safeying and locking assemblies [MTC 20-02-06-101](#)
- Use of cleaning products on individual parts and on aircraft - Cleaning [MTC 20-04-01-102](#)
- Helicopter parked in a repair shop - Safety instructions [MTC 20-07-02-201](#)
- Assembly by screws and nuts - Joining [MTC 20-02-05-404](#)
- Weighing of the cabin fire extinguisher POST MOD 0726B30 - Cabin Fire Extinguishing System [MET 26-22-00-605](#)
- Clean and apply the close-up procedure to the work areas and the helicopter. [MTC 20-07-03-408](#)
- Removal / Installation - Cabin fire extinguisher support POST MOD 0726B28 - Cabin Fire Extinguishing System [MET 26-22-00-401](#)
- Weighing of the cabin fire extinguisher POST MOD 0726B32 - Cabin Fire Extinguishing System [MET 26-22-00-605](#)

3.2. Set up

- Park the helicopter in a hangar, refer to [MTC 20-07-02-201](#)
- Install appropriate means of access
- Disconnect all power sources
- Remove all the equipment and fittings necessary for good accessibility to the work area

3.3. Special Tools

None

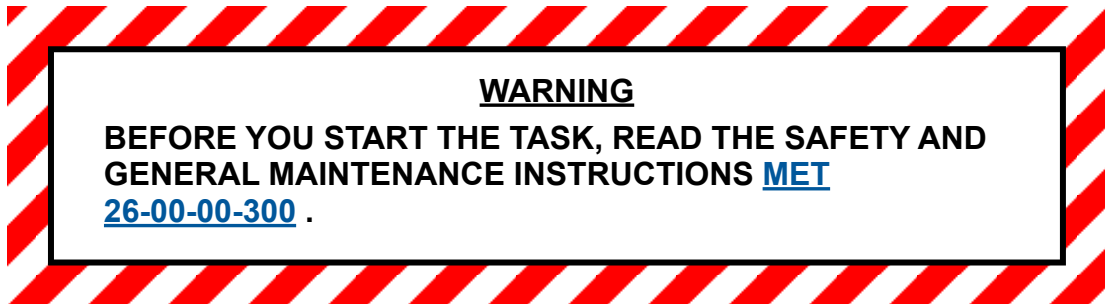
3.4. Consumables, Materials and Expendables

Designation	Reference	MFC	QTY
Locking compound	CM 621	-	1

3.5. Spares

Designation	Reference	MFC	QTY
HAND FIRE-EXTINGUISHER BOTTLE	P3APP003010D	F0210	1
HAND FIRE EXTINGUISHER BRACKET	P3APP003020J	F0210	1
SPACER	350A77-2428-20	F0210	2
SPACER	365V87-0544-24	F0210	2
WASHER	23116TK040X	F0210	2
WASHER	23116TK050X	F0210	2
SUPPORT ASSY	365V87-0742-06	F0210	2
SIX-LOBE RECESS SCREW	ECS2365TK04S8X	F0210	2
SIX-LOBE RECESS SCREW	ECS2365TK05S10X	F0210	2
SIX-LOBE RECESS SCREW	ECS2365TK05S14X	F0210	2
SIX-LOBE RECESS SCREW	ECS2365TK05S16X	F0210	2
SIX-LOBE RECESS SCREW	ECS2365TK04S22X	F0210	2

3.6. Safety conditions



4. PROCEDURE

- 4.1. Check the figures to identify which one corresponds to the position of the extinguisher, refer to [\(Figure 1\)](#), [\(Figure 2\)](#), [\(Figure 3\)](#), [\(Figure 4\)](#), [\(Figure 5\)](#)
- 4.2. Remove the Cockpit fire extinguisher (101), the bracket (102) and the hardware, refer to [MET 26-22-00-401](#).

NOTE

Depending on the figures, the hardware items can be 103, 104, 105, 106, 107, 108, 109, 110, 111, 112.

- 4.3. **Installation of the fire extinguisher and the bracket depending on the position.**

- 4.3.1. **For positions 1 to 6** , refer to [\(Figure 1\)](#)

- Install the HAND FIRE EXTINGUISHER BRACKET P3APP003020J (2) with:
 - SIX-LOBE RECESS SCREW ECS2365TK04S22X (12).
 - Locking compound CM 621.
 - WASHER 23116TK040X (5).
 - SPACER 350A77-2428-20 (3).
 - Apply torque to SIX-LOBE RECESS SCREW ECS2365TK04S22X in accordance with [\(Figure 1\)](#) .

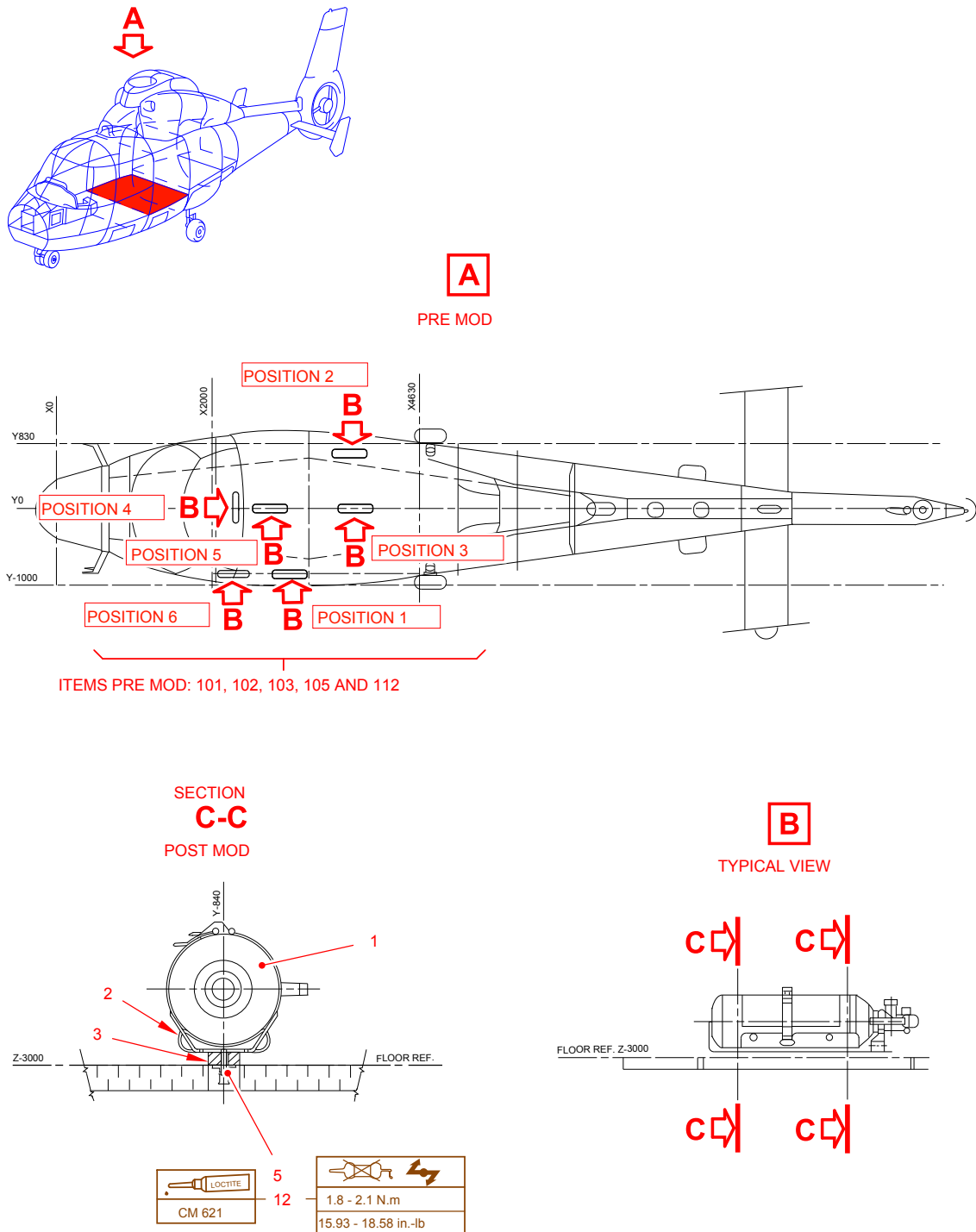
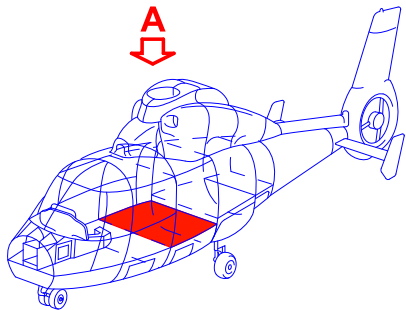


Figure 1 - Positions 1 to 6.

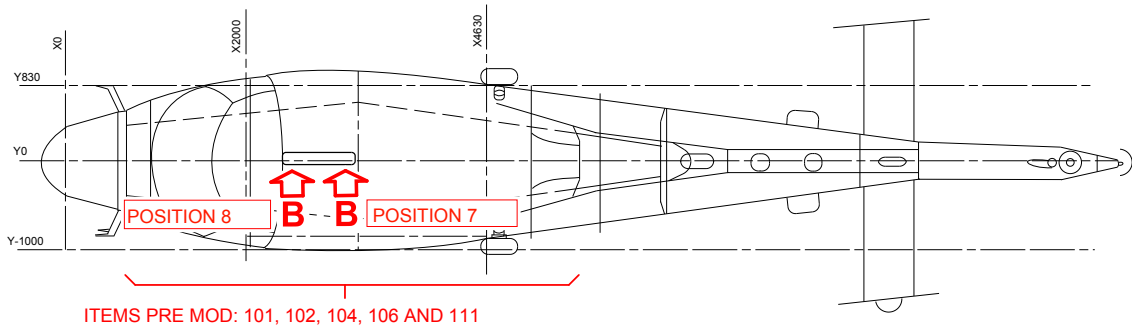
4.3.2. For positions 7 and 8 , refer to [\(Figure 2\)](#)

- Install the HAND FIRE EXTINGUISHER BRACKET P3APP003020J (2) with:
 - SIX-LOBE RECESS SCREW ECS2365TK05S16X (11).
 - Locking compound CM 621.
 - WASHER 23116TK050X (6).
 - SPACER 365V87-0544-24 (4).
 - Apply torque to SIX-LOBE RECESS SCREW ECS2365TK05S16X in accordance with [\(Figure 2\)](#) .

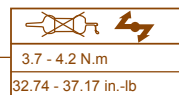
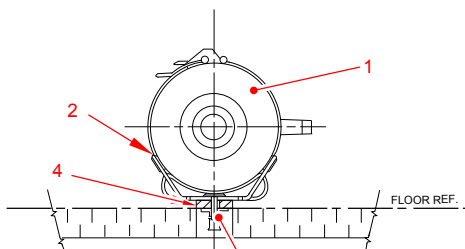


A

PRE MOD



SECTION
C-C
POST MOD



B

TYPICAL VIEW

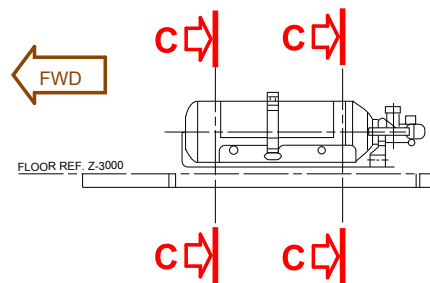


Figure 2 - Position 7 and 8.

4.3.3. For positions 9 to 11 , refer to [\(Figure 3\)](#)

Install the SUPPORT ASSY 365V87-0742-06 (7) with:

- SIX-LOBE RECESS SCREW ECS2365TK05S10X (8).
- Locking compound CM 621.
- WASHER 23116TK050X (5).
- Apply torque to SIX-LOBE RECESS SCREW ECS2365TK05S10X in accordance with [\(Figure 3\)](#).

Install the HAND FIRE EXTINGUISHER BRACKET P3APP003020J (2) with:

- SIX-LOBE RECESS SCREW ECS2365TK05S14X (10).
- WASHER 23116TK040X (6).
- Apply torque to SIX-LOBE RECESS SCREW ECS2365TK05S14X in accordance with [\(Figure 3\)](#).

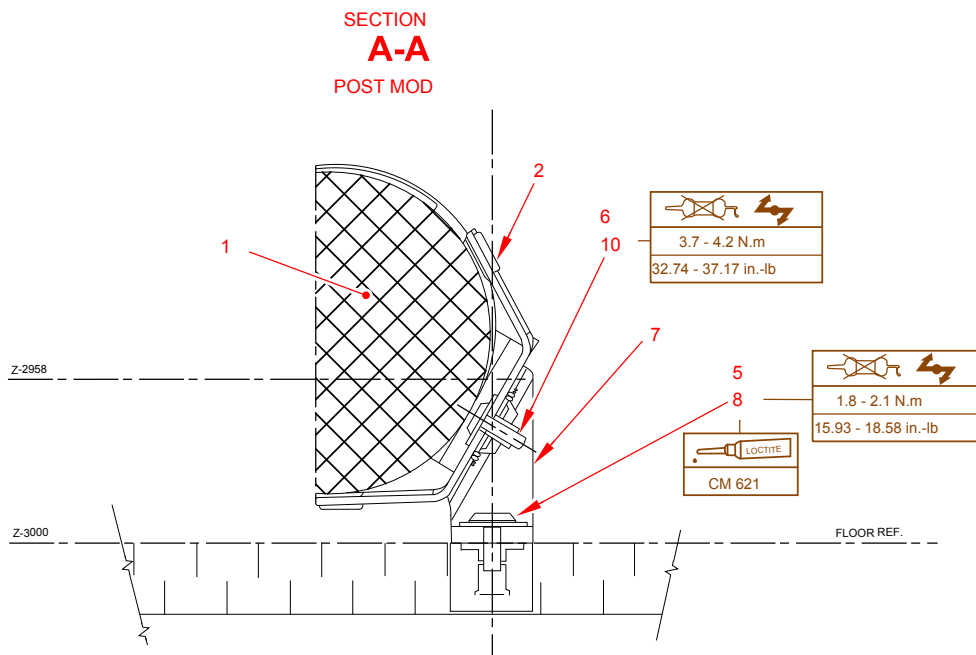
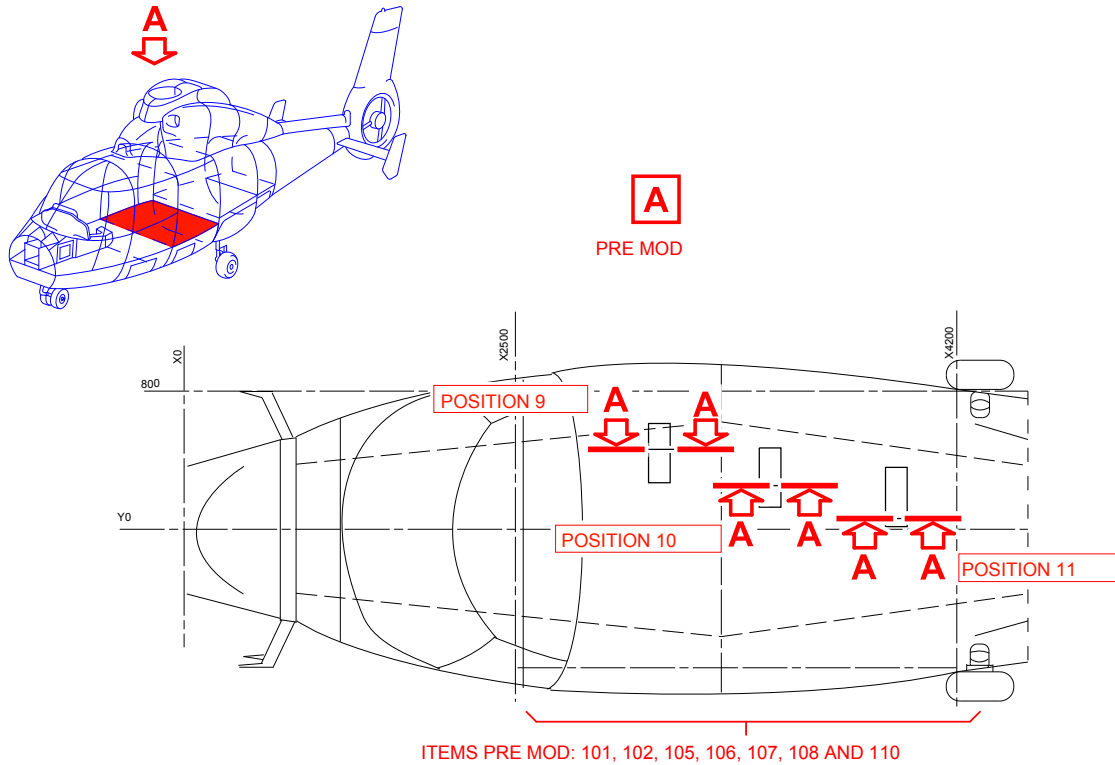
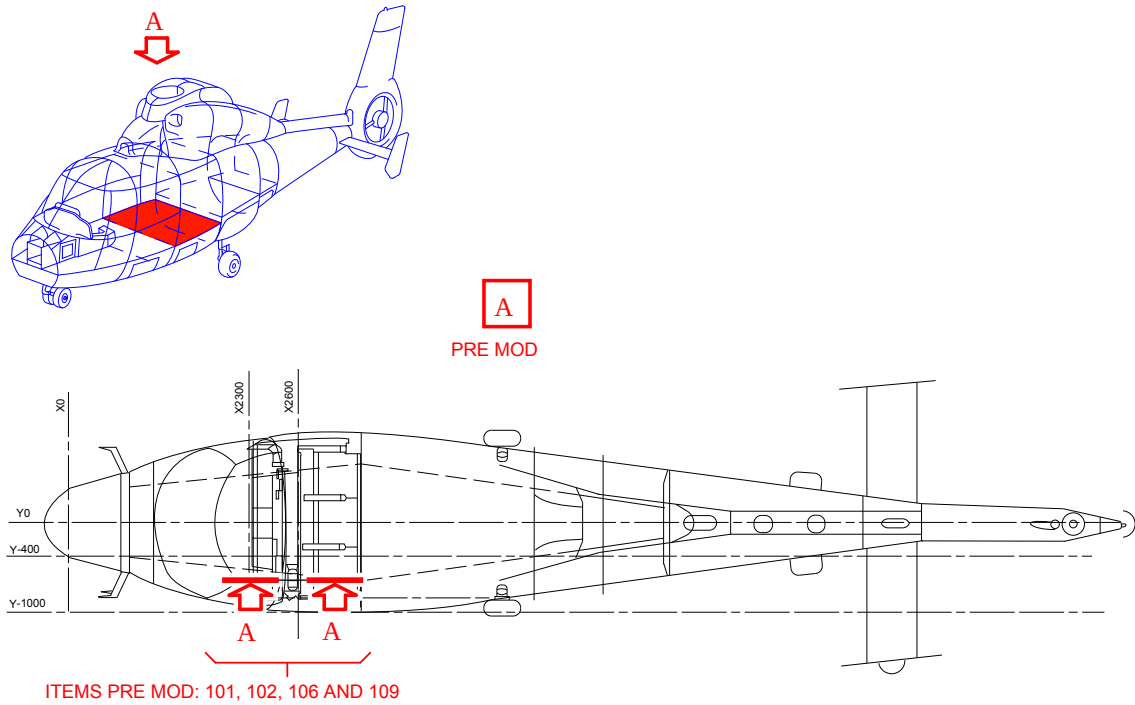


Figure 3 - Positions 9 to 11.

4.3.4. **For position 12** , refer to [\(Figure 4\)](#)

- Install the HAND FIRE EXTINGUISHER BRACKET P3APP003020J (2) with:
 - SIX-LOBE RECESS SCREW ECS2365TK05S10X (9).
 - Locking compound CM 621.
 - WASHER 23116TK050X (6).
 - Apply torque to SIX-LOBE RECESS SCREW ECS2365TK05S10X in accordance with [\(Figure 4\)](#) .



SECTION
A-A
POST MOD

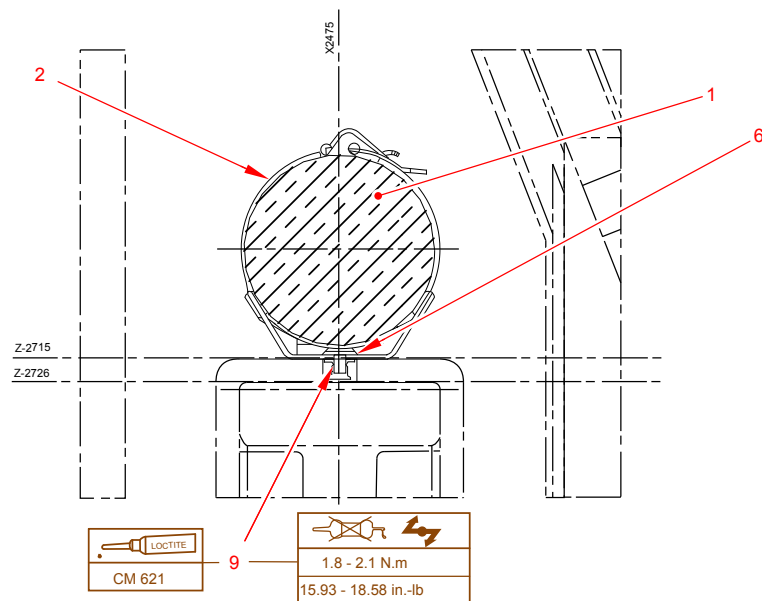


Figure 4 - Position 12.

4.3.5. For position 13 , refer to [\(Figure 5\)](#)

- Install the HAND FIRE EXTINGUISHER BRACKET P3APP003020J (1) [\(Figure 5\)](#) with:
 - SIX-LOBE RECESS SCREW ECS2365TK05S16X (11).
 - Locking compound CM 621.
 - WASHER 23116TK050X (6).
 - Apply torque in accordance with [\(Figure 5\)](#) .

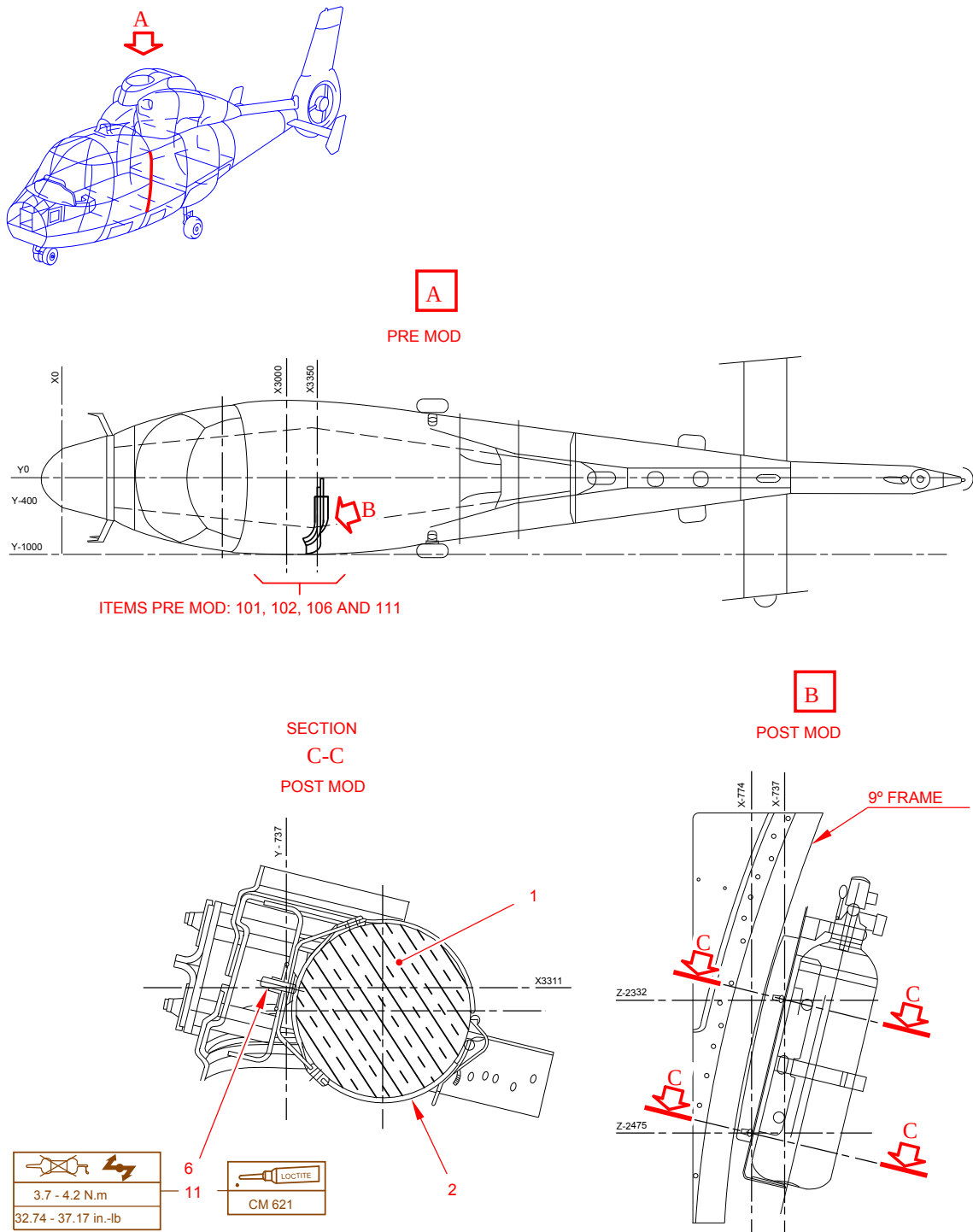


Figure 5 - Position 13.

4.4. For all positions

- Weigh the HAND FIRE-EXTINGUISHER BOTTLE P3APP003010D (1) , refer to [MET 26-22-00-605](#).
- Install the HAND FIRE-EXTINGUISHER BOTTLE P3APP003010D (1) on the HAND FIRE EXTINGUISHER BRACKET P3APP003020J (2) and close the attachment clamp of bracket.

5. CLOSE UP

- 5.1. Clean and apply the close-up procedure to the work areas and the helicopter [MTC 20-07-03-408](#)
- 5.2. After you complete the work, record the new weight and moment in your applicable document.
- 5.3. Record compliance with the SB AS365-26-25-0002 in the helicopter documents.
- 5.4. Record compliance with this MC26B35, in the Log Card. Refer to Drafting and updating the log card (FM) - General rules applicable to aircraft MTC 20-08-05-101
- 5.5. For helicopters PRE MOD MC26B29 or MC26B37, Record compliance with this MC26B29, in the Log Card. Refer to Drafting and updating the log card (FM) - General rules applicable to aircraft MTC 20-08-05-101
- 5.6. Record compliance with this Service Bulletin (see IN 3785-I-00 for instructions): QR code or hypertext link



[SB AS365-26-25-0002](#)

End of Service Bulletin