



CT7-2E INCREMENTAL CHANGE

Release Notification Date: 04/14/2021

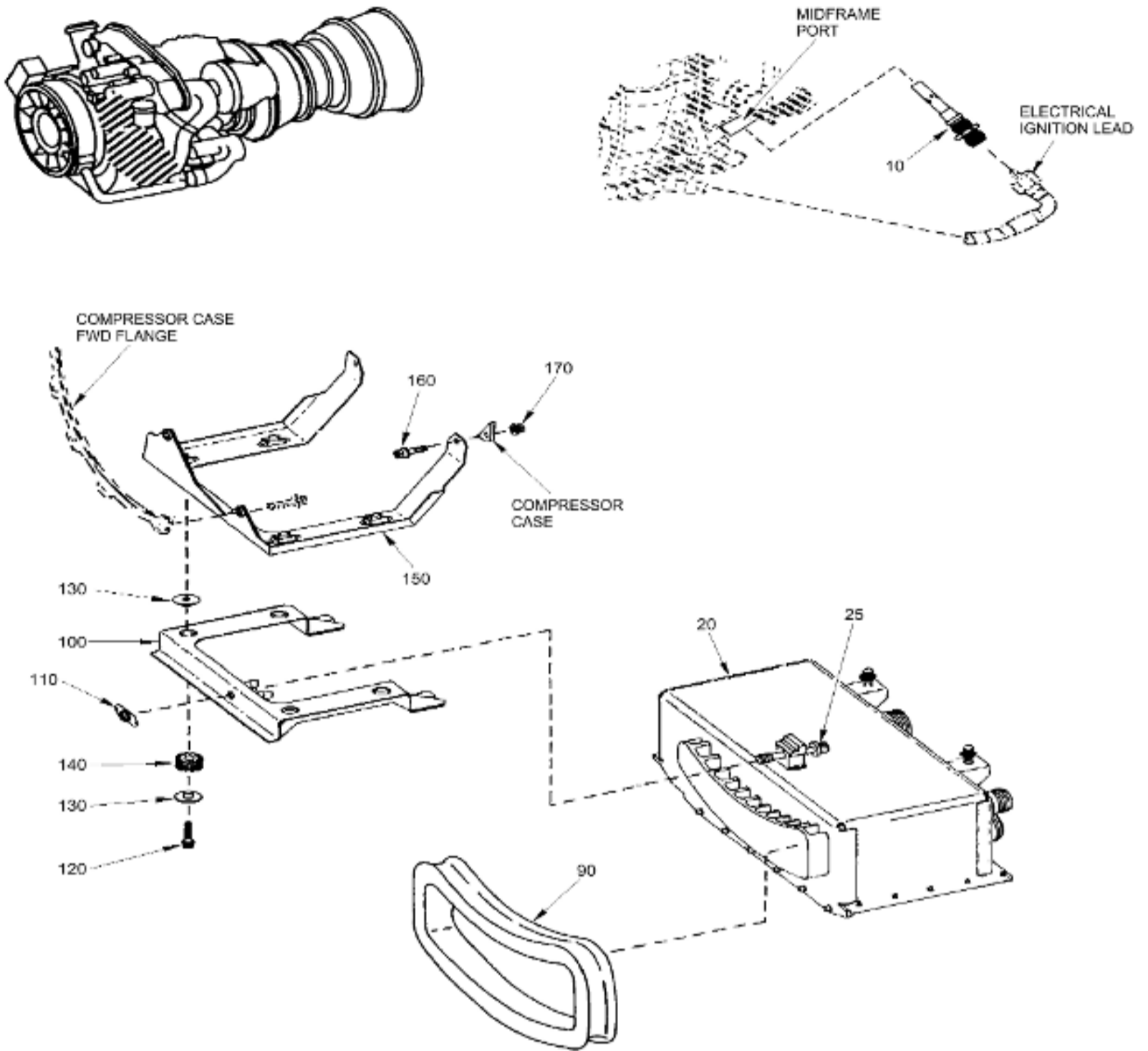
IPC 74-00-00 FIG. 01 ELECTRICAL SYSTEM

GE Designated: -CONFIDENTIAL-

The information contained in this document is GE proprietary information and is disclosed in confidence. It is the property of GE and shall not be used, disclosed to others or reproduced without the express written consent of GE, including, but without limitation, it is not to be used in the creation, manufacture, development, or derivation of any repairs, modifications, spare parts, designs, or configuration changes or to obtain FAA or any other government or regulatory approval to do so. If consent is given for reproduction in whole or in part, this notice and the notice set forth on each page of this document shall appear in any such reproduction in whole or part.

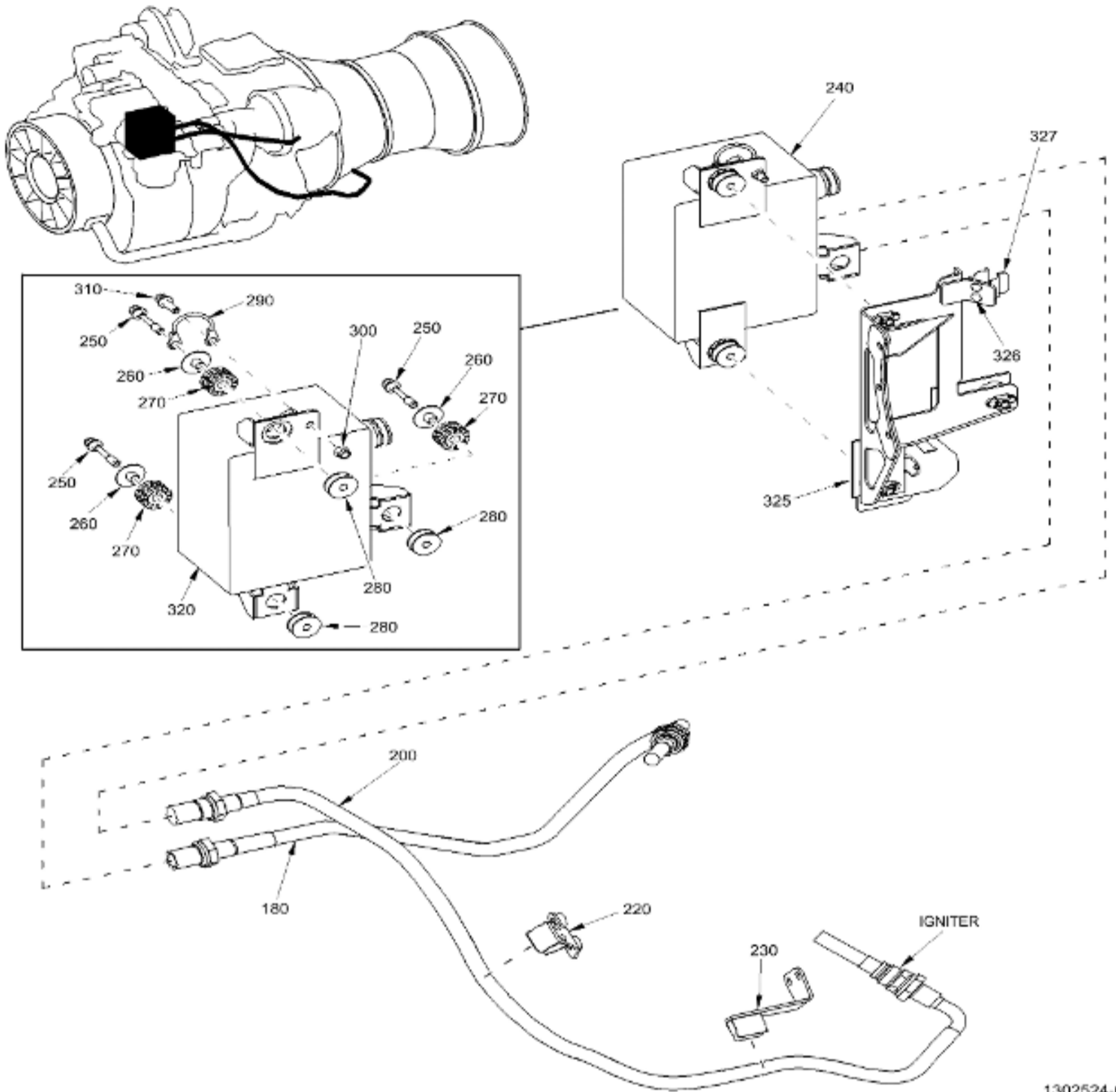
This technical data is considered subject to the Export Administration Regulations (EAR) pursuant to 15 CFR Parts 730-774. Transfer of this data by any means to a Non-U.S. Person, whether in the United States or abroad, without the proper U.S. Government authorization (e.g., License, exemption, NLR, etc.), is strictly prohibited.

Copyright (2021) General Electric Company, U.S.A.

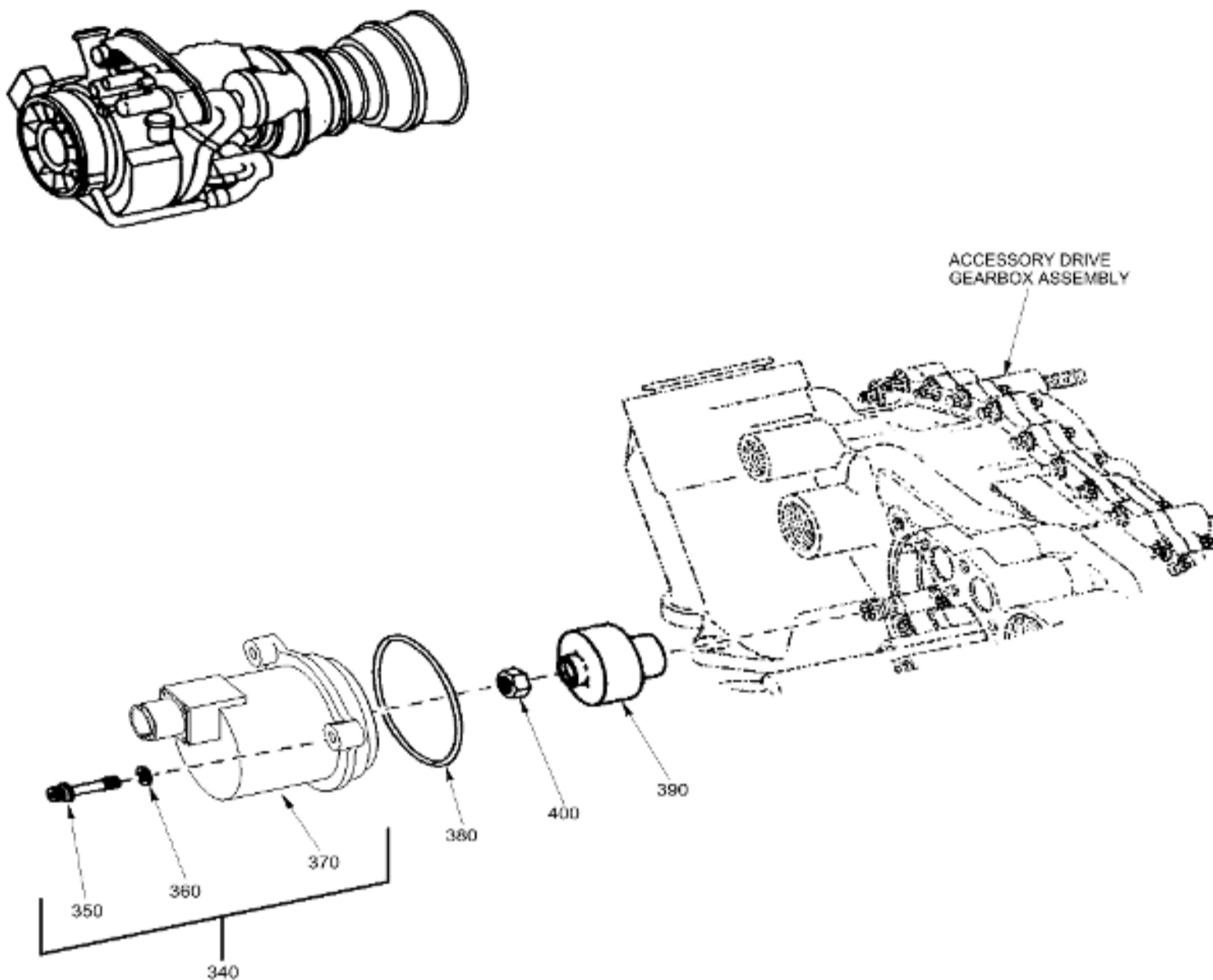


1302523-01

ELECTRICAL SYSTEM
 Figure 01 (Sheet 1)

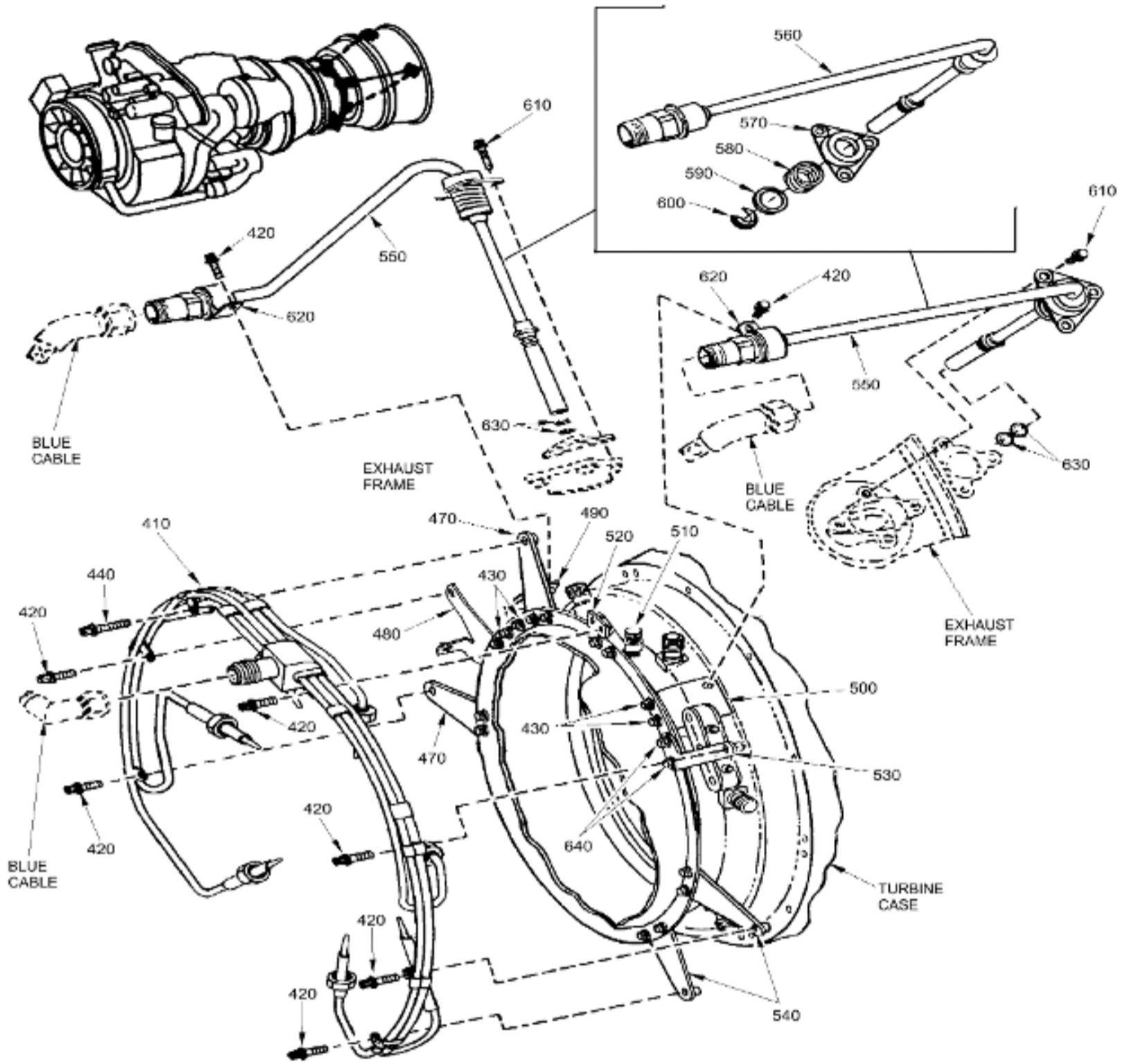


ELECTRICAL SYSTEM
Figure 01 (Sheet 2)



1302525-00

ELECTRICAL SYSTEM
Figure 01 (Sheet 3)



1302526-00

ELECTRICAL SYSTEM
 Figure 01 (Sheet 4)

Image Not Available

ELECTRICAL SYSTEM
 Figure 01 (Sheet 5)

ITEM	PART NUMBER	NOMENCLATURE	USAGE CODE	UNITS PER ASSY
		1234567 		
-001	NO-NUMBER	ELECTRICAL SYSTEM		RF
-005	NHA	ENGINE ASSY-AIRCRAFT SIN 00100 SEE 72-00-00-01-001 FOR NHA		RF
010	5044T67P07	. IGNITER PLUG SIN 0E000		2
-010A	5044T67P13	. IGNITER PLUG SIN 0E000 POST SB 72-0003	NP	ALT
020	5158T32P03	. CONTROL UNIT-ELECTRONIC ENGINE SIN 0E300		1
025	3032T53P01	. . BOLT-CAPTIVE SIN 0E300 90		1
-040	5176T39P01	. SOFTWARE-CONTROL UNIT		1

		SIN 6510A RWK TO 5176T39P02		
-040A	5176T39P02	. SOFTWARE-CONTROL UNIT SIN 6510A POST SB 74-0002 RWK FROM 5176T39P01 RWK TO 5176T39P03		1
-040B	5176T39P03	. SOFTWARE-CONTROL UNIT SIN 6510A POST SB 74-0003 RWK FROM 5176T39P02 RWK TO 5176T39P04		1
-040C	5176T39P04	. SOFTWARE-CONTROL UNIT SIN 6510A POST SB 74-0004 RWK FROM 5176T39P03		1
-080	NHA	COLD SECTION MODULE SIN 00900 SEE 72-30-00-01-001 FOR NHA		RF
090	4069T67P02	. SEAL-ELECTRICAL SIN 02402		1
100	5056T75G02	. BRACKET-EECU SIN 0E302		1
110	J146P06	. . NUT-SELF-LOCKING PLATE SIN 0E302 6		1
120	J643P10A	. BOLT-MACHINE SIN 0E320		4
130	37B201071P102	. FERRULE SIN 0E305		8
140	37B201094P102	. ISOLATOR-VG BRACKET SIN 0E306		4
150	6058T52G01	. BRACKET-AMPLIFIER SUPPORT SIN 0E301		1
160	J643P06A	. BOLT-MACHINE SIN 0E322		2
170	4046T32P01	. NUT-LOCK SIN 0E340		2
-170A	4046T32P02	. NUT-LOCK SIN 0E340		ALT
-170B	4046T32P03	. NUT-LOCK SIN 0E340		ALT
-170C	4046T32P04	. NUT-LOCK SIN 0E340		ALT
180	4052T54P07	. LEAD-ELECTRICAL IGNITION SIN 0E100		1
200	4052T54P02	. LEAD-ELECTRICAL IGNITION SIN 0E900		1
220	5169T67G01	. BRACKET-ELECTRICAL CABLE SUPPORT SIN 0E814		1
230	5162T93G01	. BRACKET-IGNITION LEAD SIN 0E910		1
240	5168T68G01	. IGNITION EXCITER SIN 0E400	a	1
-240A	3060T39G01	. IGNITION EXCITER SIN 0E400	b	ALT
250	3034T54P01	. . BOLT-SELF-RETAINING SIN 0E400 9		3
260	37B201071P102	. . FERRULE SIN 0E400 7		3
270	37B201094P102	. . ISOLATOR-VG BRACKET SIN 0E400 8		3
280	3032T28P02	. . FERRULE SIN 0E400 6		3
290	4031T48P02	. . STRAP-GROUNDING SIN 0E400 3		1
300	4046T32P01	. . NUT-LOCK SIN 0E400 5		1
-300A	4046T32P02	. . NUT-LOCK SIN 0E400 5		ALT
-300B	4046T32P03	. . NUT-LOCK SIN 0E400 5		ALT
-300C	4046T32P04	. . NUT-LOCK SIN 0E400 5	b	ALT
310	J643P06A	. . BOLT-MACHINE		1

		SIN 0E400 4		
320	5157T09P01	. . EXCITER-IGNITION SIN 0E400 2	a	1
-320A	3060T07P01	. . EXCITER-IGNITION SIN 0E400 2	b	1
325	6058T12G04	. BRACKET-EXCITER SIN 0E402		1
326	AN123335	. . RIVET-SOLID SIN 0E402 11		2
327	4070T67P06	. . CLIP-ELECTRICAL CABLE SIN 0E402 10		1
-330	NHA	ACCESSORY MODULE SIN 29900 SEE 72-60-00-01 FOR NHA		RF
340	5168T67G01	. STATOR ASSY-ALTERNATOR SIN 29A02	a	1
-340A	3060T40G02	. STATOR ASSY-ALTERNATOR SIN 29A02	b	ALT
350	3032T53P01	. . BOLT-CAPTIVE SIN 29A02 3		3
360	AN960C416L	. . WASHER-FLAT SIN 29A02 4		3
370	5157T08P01	. . STATOR-ALTERNATOR SIN 29A02 2	a	1
-370A	3060T12P02	. . STATOR-ALTERNATOR SIN 29A02 2	b	1
380	J221P147	. PACKING-PREFORMED SIN 29A50		1
390	5157T07P01	. ROTOR-ALTERNATOR SIN 29A03		1
-390A	3060T13P01	. ROTOR-ALTERNATOR SIN 29A03		ALT
400	4040T77P01	. NUT-SELF-LOCKING SIN 29A41		1
-400A	4040T77P03	. NUT-SELF-LOCKING SIN 29A41		ALT
-405	NHA	POWER TURBINE MODULE SIN 90100 SEE 72-50-00-01-001 FOR NHA		RF
410	4189T72P01	. THERMOCOUPLE SIN 9E000		1
420	J643P06A	. BOLT-MACHINE SIN 9E021		19
430	J643P06A	. BOLT-MACHINE SIN 9E122		6
440	J643P10A	. BOLT-MACHINE SIN 9E022		1
470	4052T72G01	. BRACKET-THERMOCOUPLE HARNESS SIN 9E002		2
480	5166T04G01	. BRACKET-T4.5 HARNESS SIN 9E003		1
490	5035T73G03	. BRACKET-TORQUE/SPEED SENSOR SIN 9E101		1
500	5035T73G03	. BRACKET-TORQUE/SPEED SENSOR SIN 9E102		1
510	4046T32P01	. NUT-LOCK SIN 9E040		1
-510A	4046T32P02	. NUT-LOCK SIN 9E040		ALT
-510B	4046T32P03	. NUT-LOCK SIN 9E040		ALT
-510C	4046T32P04	. NUT-LOCK SIN 9E040		ALT
520	4052T74G01	. BRACKET-THERMOCOUPLE HARNESS SIN 9E001		1
530	4052T73G01	. BRACKET-THERMOCOUPLE HARNESS SIN 9E005		1
540	4052T72G02	. BRACKET-THERMOCOUPLE HARNESS SIN 9E004		2
550	5035T27G04	. SENSOR ASSEMBLY-POWER TURBINE SPEED AND TORQUE SIN 9E100	a	2
-550A	5035T27G05	. SENSOR ASSEMBLY-POWER TURBINE SPEED AND TORQUE SIN 9E100	b	ALT
-550B	5035T27G07	. SENSOR ASSEMBLY-POWER TURBINE SPEED AND TORQUE	c	ALT

		SIN 9E100		
560	6038T65P01	. . SENSOR-POWER TURBINE SPEED SIN 9E100 2	a	1
-560A	6038T65P02	. . SENSOR-POWER TURBINE SPEED SIN 9E100 2	b	1
-560B	6038T65P04	. . SENSOR-POWER TURBINE SPEED SIN 9E100 2	c	1
570	4041T70P01	. . COVER-SENSOR ASSEMBLY SIN 9E100 3		1
580	3032T23P01	. . SPRING-HELICAL SIN 9E100 4		1
590	3032T04P01	. . RETAINER-SPRING SIN 9E100 6		1
600	3032T05P01	. . LOCK-SPRING SIN 9E100 5		1
610	J643P10A	. BOLT-MACHINE SIN 9E120		6
620	J1220G13	. CLAMP-CUSHIONED SIN 9E180		2
630	9169M40P110	. PACKING-PREFORMED SIN 9E150 REPL BY 4074T58P04		4
-630A	4074T58P04	. PACKING-PREFORMED SIN 9E150 POST SB 72-0014 REPLS 9169M40P110		4
-630B	J1400P011	. PACKING-PREFORMED SIN 9E150		ALT
640	J643P06A	. BOLT-MACHINE SIN 9L221		2

- ITEM NOT ILLUSTRATED

GE Designated: - CONFIDENTIAL Subject to the restrictions on the media