



CT7-2E INCREMENTAL CHANGE

Release Notification Date: 04/14/2021

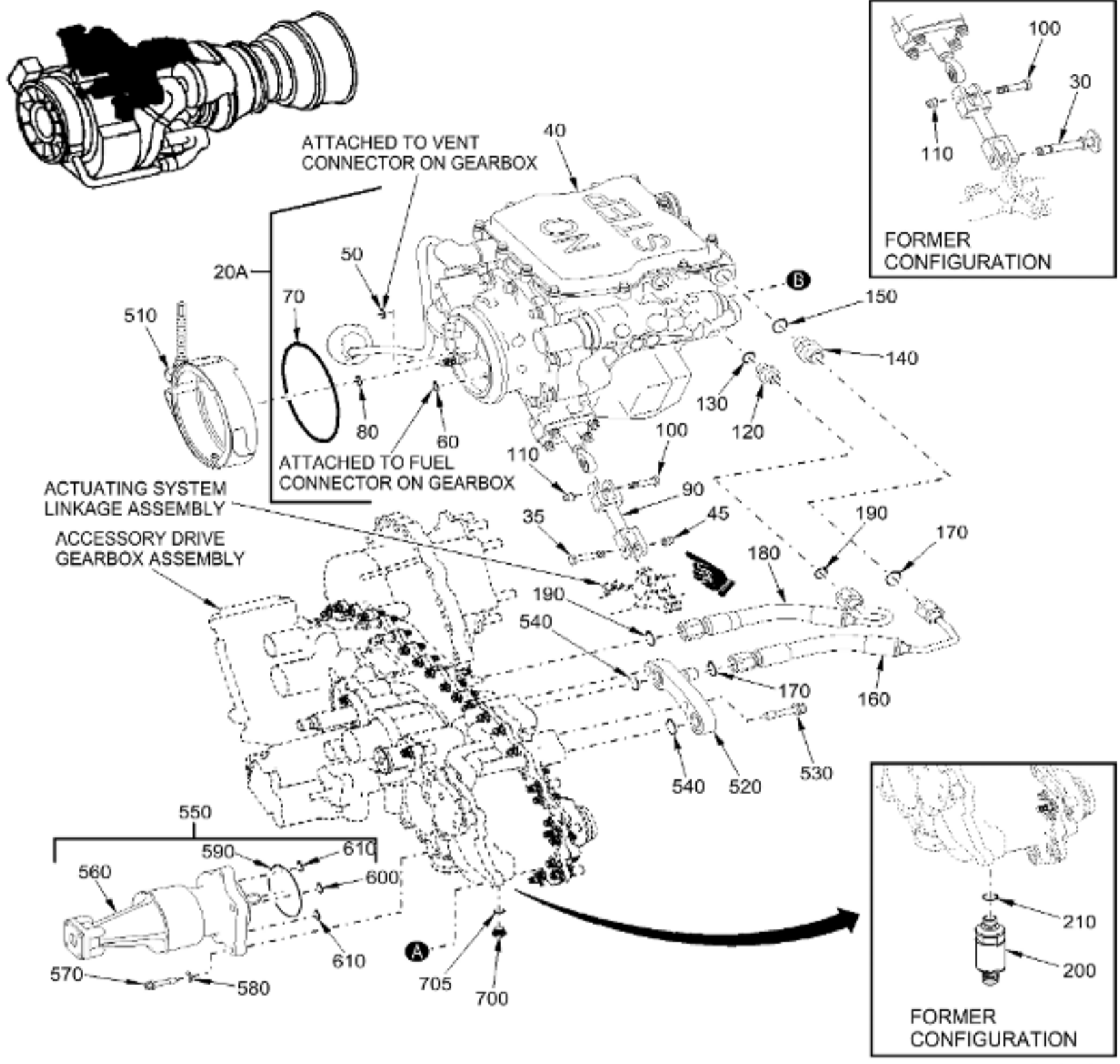
IPC 73-00-00 FIG. 01 FUEL SYSTEM

**GE Designated: -CONFIDENTIAL-**

The information contained in this document is GE proprietary information and is disclosed in confidence. It is the property of GE and shall not be used, disclosed to others or reproduced without the express written consent of GE, including, but without limitation, it is not to be used in the creation, manufacture, development, or derivation of any repairs, modifications, spare parts, designs, or configuration changes or to obtain FAA or any other government or regulatory approval to do so. If consent is given for reproduction in whole or in part, this notice and the notice set forth on each page of this document shall appear in any such reproduction in whole or part.

This technical data is considered subject to the Export Administration Regulations (EAR) pursuant to 15 CFR Parts 730-774. Transfer of this data by any means to a Non-U.S. Person, whether in the United States or abroad, without the proper U.S. Government authorization (e.g., License, exemption, NLR, etc.), is strictly prohibited.

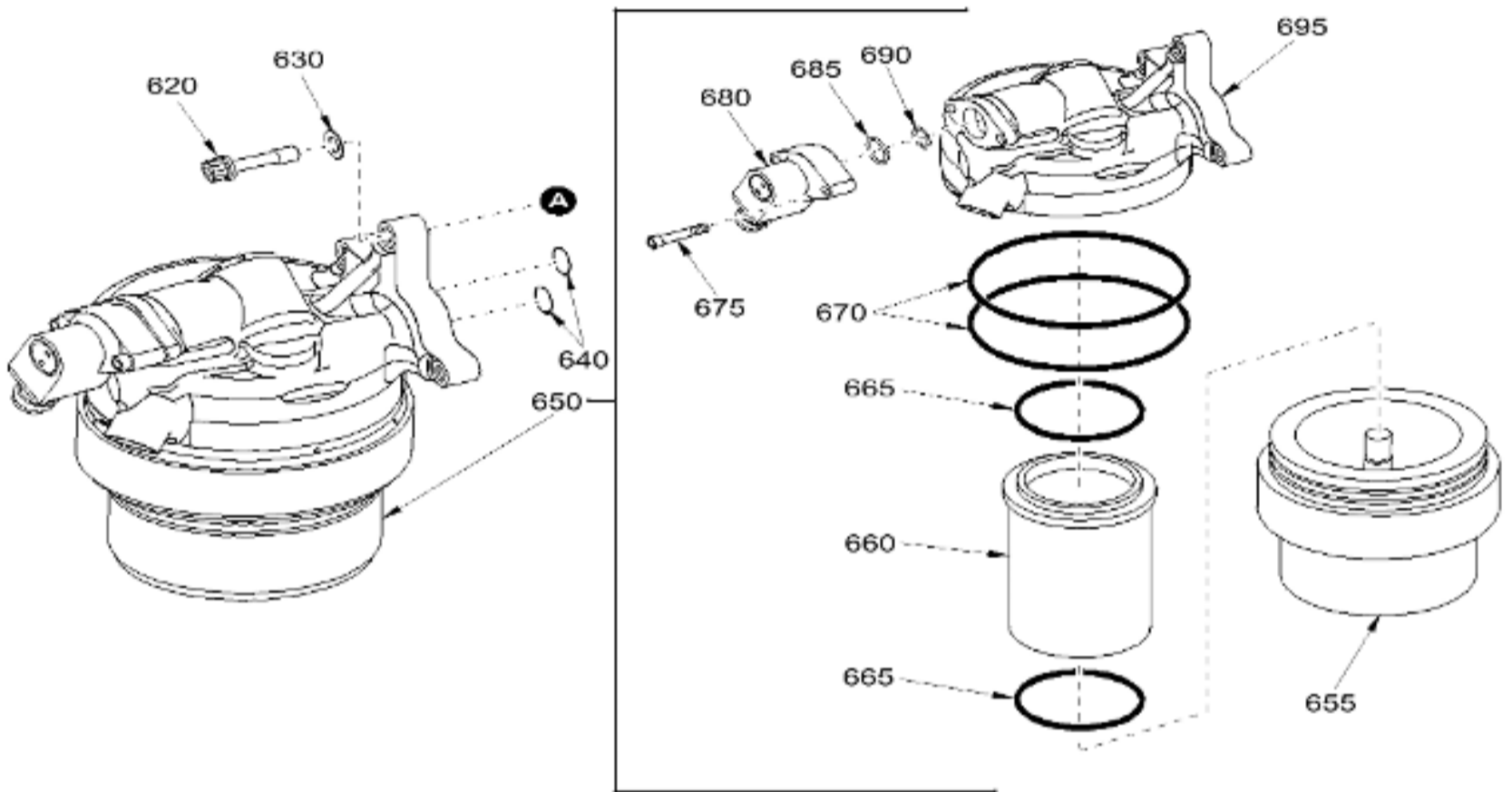
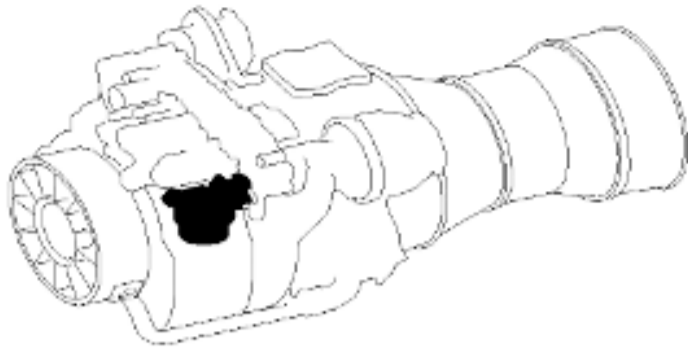
Copyright (2021) General Electric Company, U.S.A.



1301655-03

FUEL SYSTEM  
 Figure 01 (Sheet 1)





5008899-00

FUEL SYSTEM  
Figure 01 (Sheet 3)

Image Not Available

FUEL SYSTEM  
 Figure 01 (Sheet 4)

ITEM	PART NUMBER	NOMENCLATURE	USAGE CODE	UNITS PER ASSY
		1234567 		
- 001	NO-NUMBER	FUEL SYSTEM		RF
- 005	NHA	ENGINE ASSY-AIRCRAFT SEE 72-00-00-01 FOR NHA		RF
- 020	5165T63G02	. UNIT ASSEMBLY-FMU CONTROL SIN 30H00 RWK TO 5165T63G03		1
020A	5165T63G03	. UNIT ASSEMBLY-FMU CONTROL SIN 30H00 POST SB 72-0008		1
030	4078T20G01	. . PIN ASSY-QUICK-DISCONNECT SIN 30H00 8 DEL BY SB 72-0008		DEL
035	4048T91P01	. . BOLT-HEXAGONAL HEAD SHEAR SIN 30H00 15 POST SB 72-0008		1

040	5158T31P02	. . UNIT-FUEL METERING SIN 30H00 2		1
045	4046T32P01	. . NUT-SELF-LOCKING SIN 30H00 16 POST SB 72-0008		1
- 045A	4046T32P02	. . NUT-SELF-LOCKING SIN 30H00 16 POST SB 72-0008		ALT
- 045B	4046T32P03	. . NUT-SELF-LOCKING SIN 30H00 16 POST SB 72-0008		ALT
- 045C	4046T32P04	. . NUT-SELF-LOCKING SIN 30H00 16 POST SB 72-0008		ALT
050	J228P011	. . PACKING-PREFORMED SIN 30H00 11		1
060	J228P013	. . PACKING-PREFORMED SIN 30H00 13		1
070	J228P041	. . PACKING-PREFORMED SIN 30H00 12		1
080	J221P012	. . PACKING-PREFORMED SIN 30H00 14		1
090	4053T11G01	. . LINK ASSEMBLY SIN 30H00 7		1
100	J713P029A	. . BOLT-SHEAR SIN 30H00 5		1
110	4046T32P01	. . NUT-SELF-LOCKING SIN 30H00 6		1
- 110A	4046T32P02	. . NUT-SELF-LOCKING SIN 30H00 6		ALT
- 110B	4046T32P03	. . NUT-SELF-LOCKING SIN 30H00 6		ALT
- 110C	4046T32P04	. . NUT-SELF-LOCKING SIN 30H00 6		ALT
120	5157T80P01	. . INSERT SIN 30H00 3		1
130	J228P012	. . PACKING-PREFORMED SIN 30H00 9		1
140	5157T81P01	. . INSERT SIN 30H00 4		1
150	J228P905	. . PACKING-PREFMD SIN 30H00 10		1
160	5157T66P01	. HOSE ASSY-AGB TO FMU SIN 34000		1
170	J221P009	. PACKING-PREFORMED SIN 34053		2
180	5157T67P01	. HOSE ASSY-FMU TO AGB SIN 34001		1
190	J221P009	. PACKING-PREFORMED SIN 34054		2
200	3066T64P01	. SWITCH-FUEL PRESSURE SIN 29A09 DEL BY SB 72-0013		DEL
210	J228P904	. PACKING-PREFORMED SIN 29A53 DEL BY SB 72-0013		DEL
220	5157T63G01	. MANIFOLD ASSEMBLY-FMU SIN 34100		1
230	5157T82G01	. . MANIFOLD SIN 34100 2		1
240	3032T44P09	. . BOLT-MACHINE SIN 34100 4		2
250	MS24693-C1	. . SCREW-MACHINE SIN 34100 5		1
260	4069T01G01	. . GASKET-ADAPTER SIN 34100 3		1
270	J643P06A	. BOLT-MACHINE SIN 34121		1
280	J221P009	. PACKING-PREFORMED SIN 34155		1
- 300	NHA	COLD SECTION MODULE SEE 72-30-00-01 FOR NHA		RF
310	5165T35G01	. BRACKET-FMU MANIFOLD SUPPORT SIN 0F310		1

320	4053T66G01	. BRACKET AND NUT SIN 0F311	1
400	5160T81P01	. MANIFOLD-MAIN FUEL SIN 0F300	1
- 402	4924T31P02	. . B-NUT (SPAD) POST SB 72-0011	AR
- 404	J1325P06	. . WIRE-SWIVEL CONNECTOR (SPAD) POST SB 72-0011	AR
410	4045T30G16	. INJECTION ASSEMBLY-FUEL SIN 0F200 REPL BY 4045T30G17	12
- 410A	4045T30G17	. INJECTION ASSEMBLY-FUEL SIN 0F200 POST SB 73-0001	12
- 410B	4045T30G15	. INJECTION ASSEMBLY-FUEL SIN 0F200 POST SB 73-0002	ALT
- 415	4076T98G01	. . FILTER-FUEL	AR
- 416	MS16625-4025	. . RING-RETAINING	AR
420	3049T66P01	. NUT-RETAINING SIN 0F240	12
430	J221P009	. PACKING-PREFORMED SIN 0F35A	12
460	J1220G10	. CLAMP-CUSHIONED SIN 0F380	1
470	J643P04A	. BOLT-MACHINE SIN 0F320	1
- 500	NHA	ACCESSORY MODULE SEE 72-60-00-01 FOR NHA	RF
510	5043T51P03	. CLAMP-V-BAND SIN 30H80	1
- 510A	5043T51P04	. CLAMP-V-BAND SIN 30H80	ALT
520	5157T65P01	. ADAPTER PLATE SIN 32200	1
530	3032T53P01	. BOLT-CAPTIVE SIN 32220	2
540	J228P112	. PACKING-PREFMD SIN 32250	2
550	3033T33G02	. PUMP ASSY-FUEL BOOST SIN 31200	1
560	5034T91P06	. . PUMP-FUEL-BOOST SIN 31200 2	1
570	3032T53P01	. . BOLT-CAPTIVE SIN 31200 3	3
580	AN960C416L	. . WASHER-FLAT SIN 31200 4	3
590	J221P140	. . PACKING-PREFORMED SIN 31200 6	1
600	J228P113	. . PACKING-PREFORMED SIN 31200 5	1
610	J221P110	. . PACKING-PREFORMED SIN 31200 7	2
620	3032T53P01	. BOLT-CAPTIVE SIN 31320	3
630	AN960C416L	. WASHER-FLAT SIN 31330	3
640	J228P113	. PACKING-PREFORMED SIN 31350	2
650	5157T79P02	. FILTER-FUEL SIN 31300	1
655	AB998593Y3D2A	. . BOWL ASSY	1
660	AC-9985F-30Y2	. . ELEMENT-FILTER	1
665	J228P226	. . PACKING-PREFORMED	2
670	J228P238	. . PACKING-PREFORMED	2
675	NAS1352C08LE12	. . . SCREW-SOCKET HEAD CAP	2
680	TD028VF0H7Y8	. . SWITCH-DIFFERENTIAL PRESSURE	1
685	J228P908	. . PACKING-PREFORMED	1
690	J228P014	. . PACKING-PREFORMED	1
695	AA998593Y9D1A	. . HEAD-FILTER	1
700	AN814-4DL	PLUG & BLEEDER	RF

		SIN 29A00 67		
705	J221P904	PACKING-PREFORMED SIN 29A00 30		RF

- ITEM NOT ILLUSTRATED

GE Designated: - CONFIDENTIAL Subject to the restrictions on the media