

Manual: Owner's Manual P/N 6AB1WNM-2-20
(INSTALLATION MANUAL, MAINTENANCE MANUAL AND ILLUSTRATED PARTS BREAKDOWN)

First Issue: 23 September 2010

Revision CY: 24 March 2023

TR-2021-001: 10 May 2023

INSTRUCTIONS

1. Before adding present change be sure that manual is valid.
Check existing List of Effective Page of the manual to be sure that all previous revisions are inserted.
(Do not insert this change if previous revisions not are inserted).
2. Insert this page before the LOEP.
3. Insert present change removing pages superseded and insert new pages as listed:

Temporary Revision Number/ Data	Section/Appendix	Page	Page Revision
*TR-2021-001 / 10 May 2023	APPENDIX CA		
	SECTION 02	2-7	TR 2021-001
	SECTION 02	2-8	CO
	SECTION 02	2-9	TR 2021-001
	SECTION 02	2-10	TR 2021-001
	SECTION 02	2-19	TR 2021-001
	SECTION 04	4-15	CO
	SECTION 04	4-16	TR 2021-001
	SECTION 04	4-16A AND 4-16B	TR 2021-001 (added)
	SECTION 05	5-13	CO
	SECTION 05	5-14	TR 2021-001
	SECTION 05	5-15 AND 5-16	TR 2021-001 (added)
	SECTION 06	6-5	TR 2021-001
	SECTION 06	6-6 AND 6-7	CO
	SECTION 06	6-8	TR 2021-001
	SECTION 06	6-15	CO
	SECTION 06	6-16	TR 2021-001
	SECTION 06	6-21	TR 2021-001
	SECTION 06	6-22	CO
	ALPHANUMERICAL INDEX	6-27 THRU 6-30	TR 2021-001 (deleted)
	ALPHABETIC INDEX	X-1 THRU X-4	TR 2021-001 (deleted)

* Shows the last issued Temporary Revision

INTENTIONALLY BLANK PAGE

2 - 5 - 4 WIRING HARNESS INSTALLATION INSTRUCTIONS

CAUTION

You must connect the bonding cable to the earth (ground) point before you connect it to the helicopter. If you do not obey this instruction you can cause an injury to persons and/or damage to the equipment.

NOTE

For the equipment identification letters used in the wiring harness system installation procedure refer to data module 39-A-00-00-00-00A-018B-D in the Wiring Data Publication 39-A-AWDP-00-X.

NOTE

During this procedure, you must remove the caps from the electrical connectors. Do this immediately before you connect each electrical connector.

NOTE

Wire harness may be grouped together.
 Cover with kevlar sleeve cable assy which interfere with structure.
 Distance between cable assy and control rods to be at least 12.7 mm.

Table 2-1. Supplies.

DESCRIPTION	SPECIFICATION	Q.ty
Adhesive EA9309.3NA	6SPEC-013-PRD TY I CL 2	AR

2 - 5 - 4 - 1 Cabin wiring harness installation instructions (IFEEL ELECTRICAL INSTALLATION)

NOTE

For wiring harness installation refer to wiring diagrams shown in [Section 5](#).

NOTE

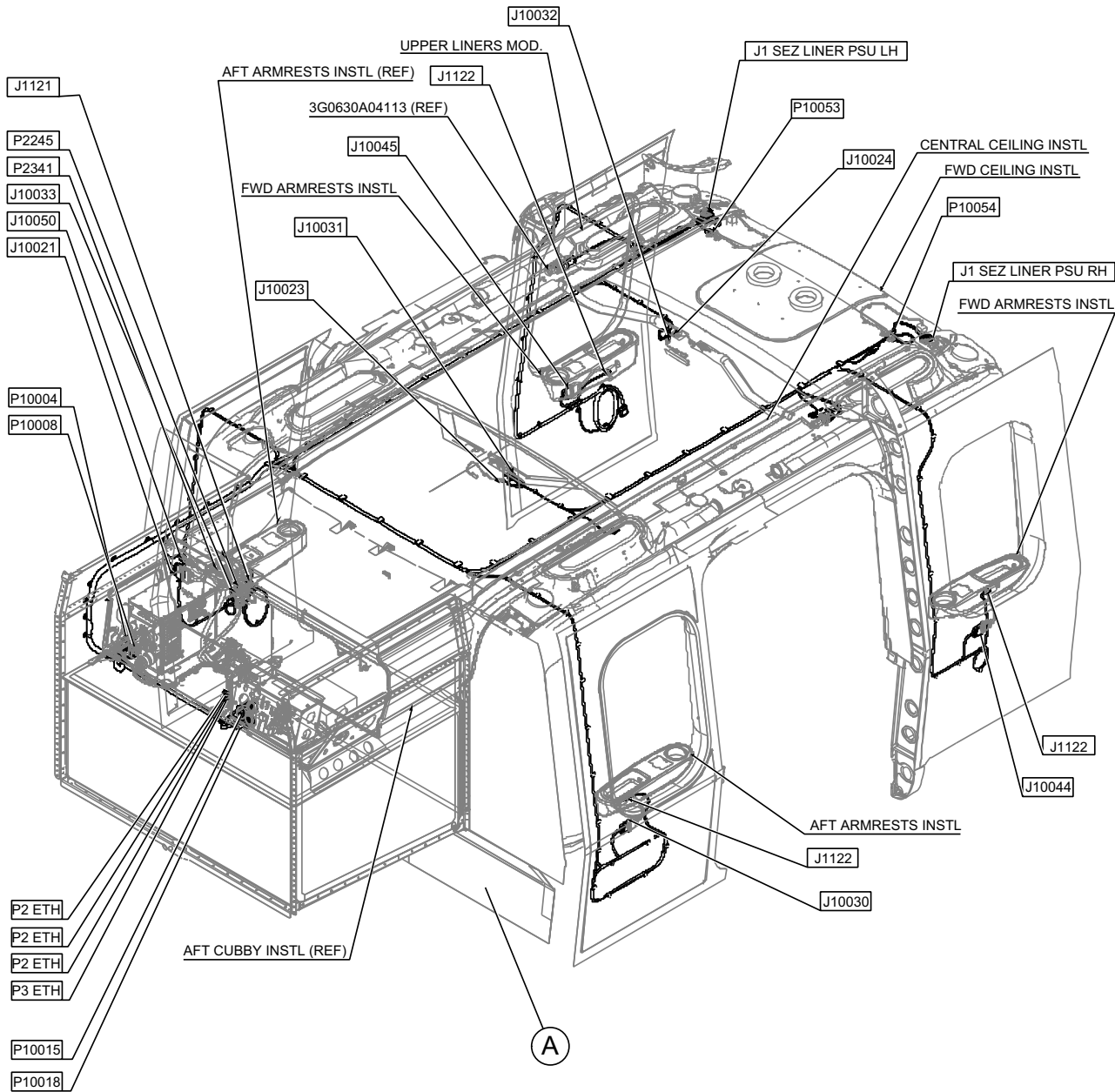
Use exiting supports and strap to stow and hold all pending cable assemblies.

1. With reference [Figure 2-3](#) route the three ETH cable assy (2), the ETH cable assy (3), the LH/RH psu interface cable assy (4, 5), the USB extension cable assy (6) and the cabin cable assy 31904R (7) approximately as shown in detail A.

NOTE

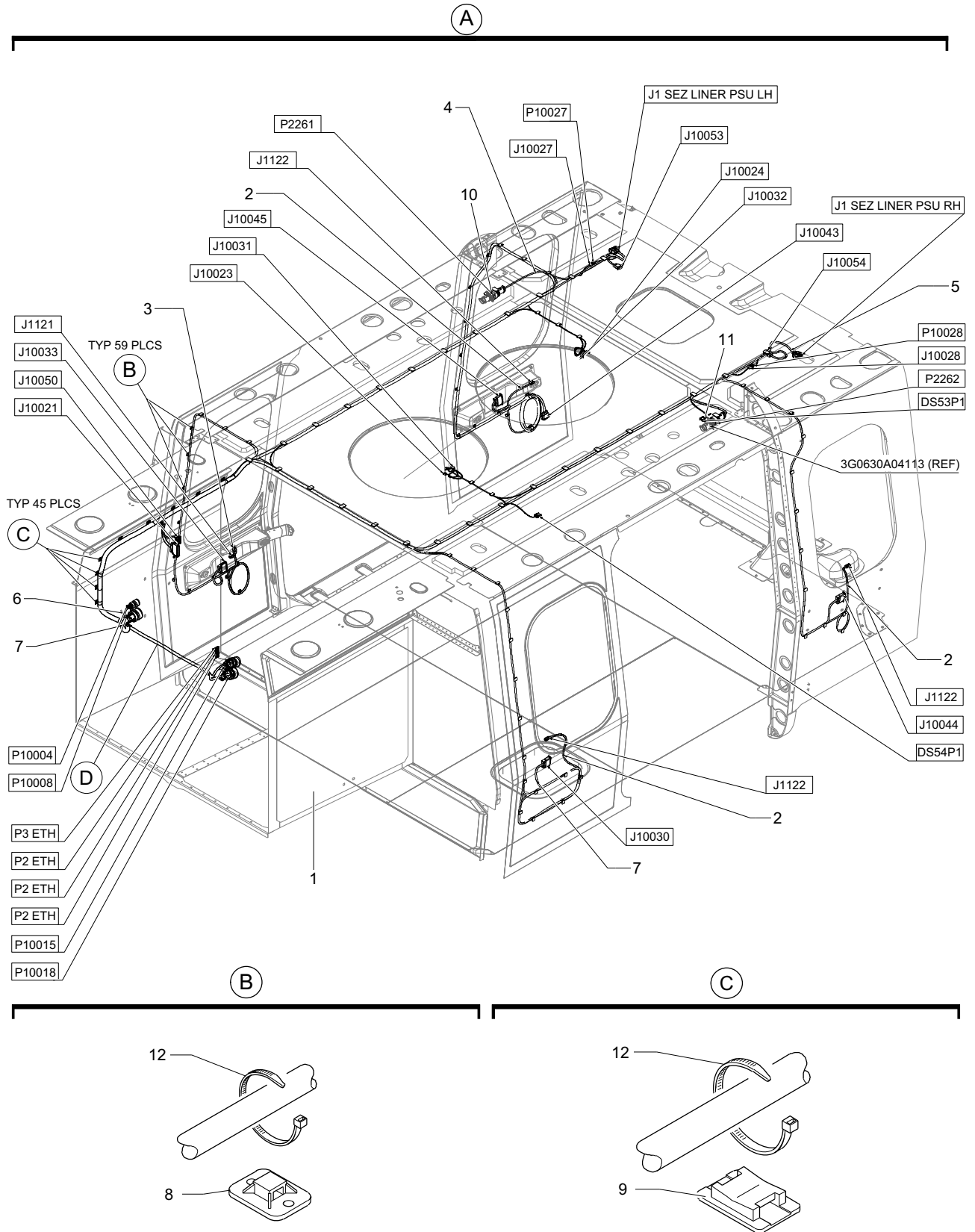
Fasten cable assy to other existing harnesses with fixing clamps and tie cords.

2. With reference to details from A and B use indicated supports (8) and (9) and straps (12) by bonding them to structure with adhesive EA9309.3NA (EPOXY TY CL 2 6SPEC-013-PRD).
3. Bond provided decals next to the related connector: P2261 and P2262.
4. Refer to [Section 5](#) for all cable assemblies connections.



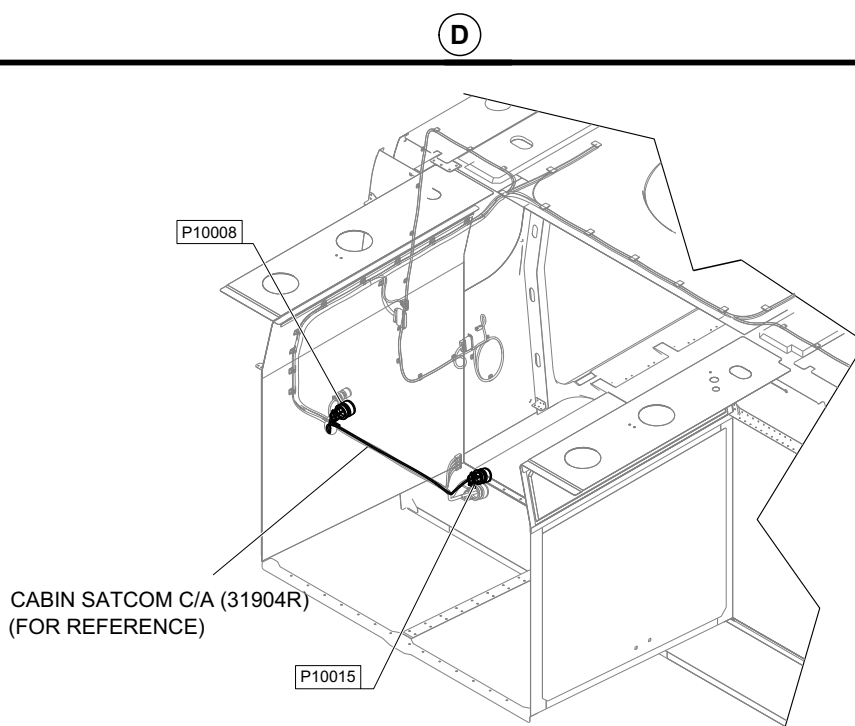
6AB1EL296-001A_WNM-2-20_3232A

Figure 2-3 IFEEL wiring harness installation (Sheet 1 of 3).



6AB1EL296-001A_WNM-2-20_3241A

Figure 2-3 IFEEL wiring harness installation (Sheet 2 of 3).



6AB1EL310-001A_WNM-2-20_3253A

Figure 2-3 IFEEL wiring harness installation (Sheet 3 of 3).

2 - 5 - 4 - 2 Cabin wiring harness installation instructions
(A.C. ELECTRICAL INSTALLATION)

NOTE

For wiring harness installation refer to wiring diagrams shown in [Section 5](#).

NOTE

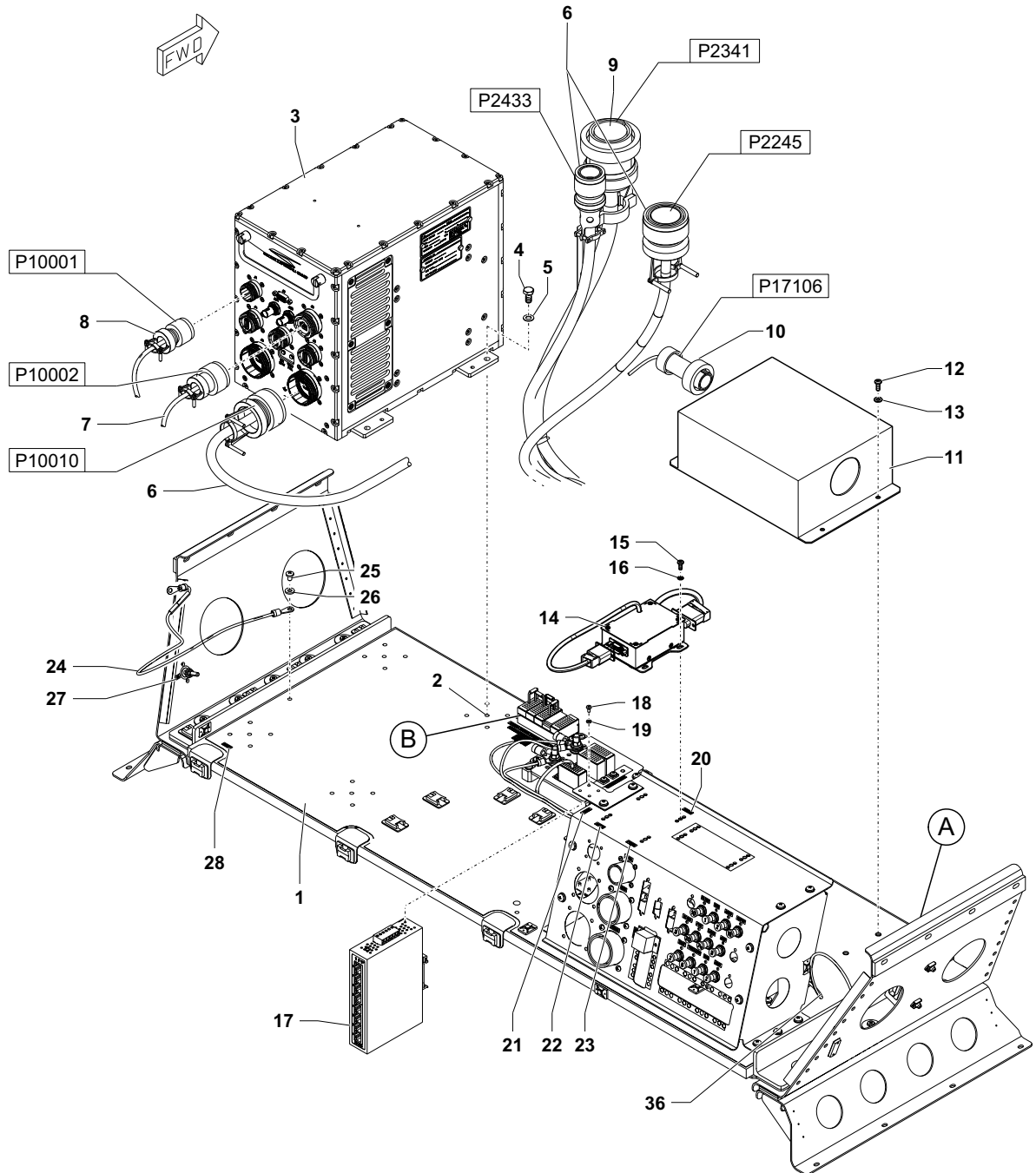
Use existing supports and strap to stow and hold all pending cable assemblies.

1. With reference to [Figure 2-3](#) route A.C. cabin cable assy (2) approximately as shown in Figure.

NOTE

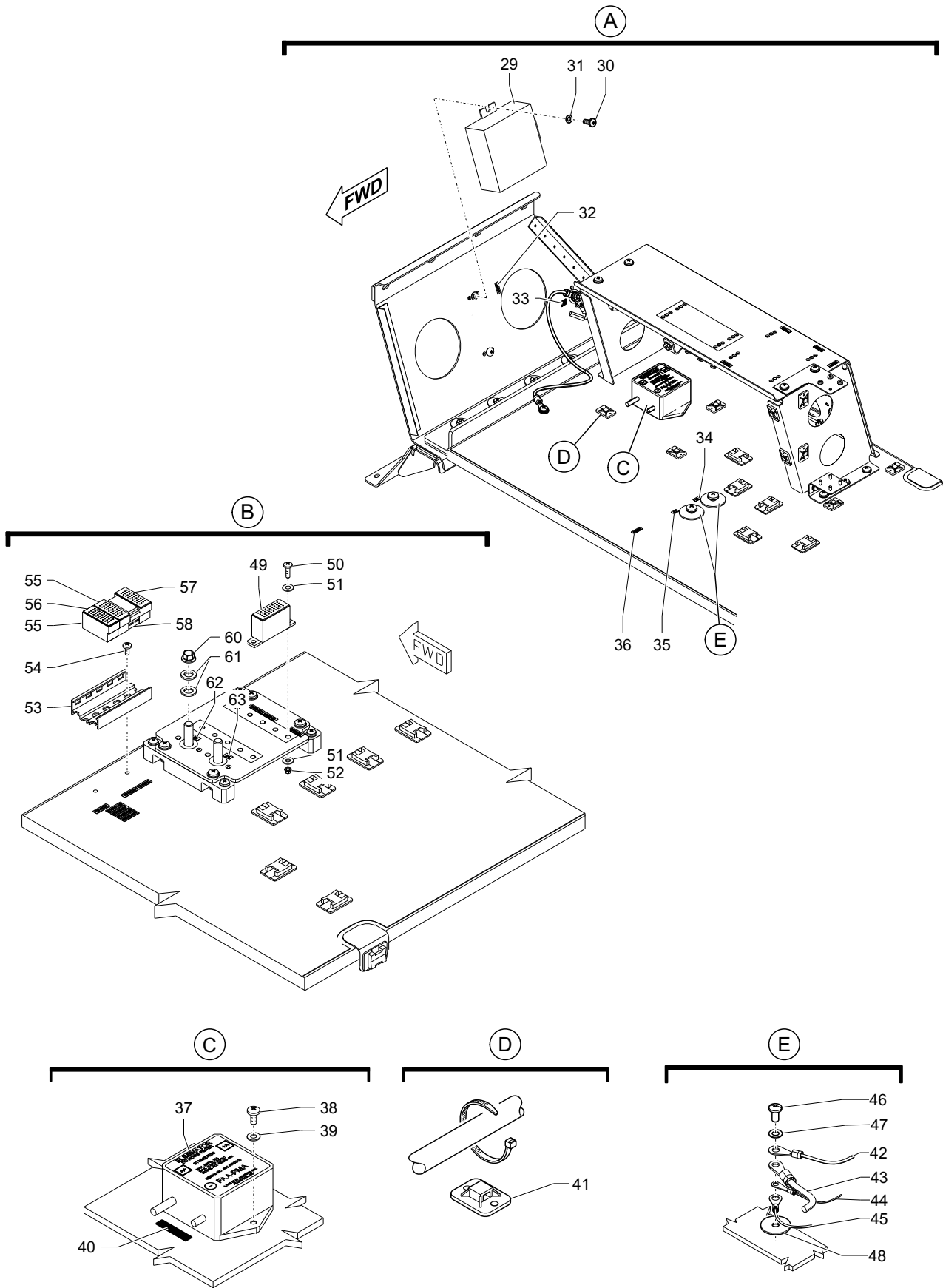
Fasten cable assy to other existing harnesses with fixing clamps and tie cord.

2. With reference to details A and B use support and strap by bonding to structure with adhesive EA 9309.3NA (EPOXY TY CL 2 6SPEC-013-PRD).
3. Bond decals (5) and (6) next to the related connector.
4. Refer to [Section 5](#) for all cable assemblies connections.



6AB1ME283-031A_WNM-2-20_3131B

Figure 2-6 Electronic and electrical devices installation/removal (Sheet 1 of 3).



6AB1ME428-229U_WNM-2-20_3067A

Figure 2-6 Electronic and electrical devices installation/removal (Sheet 2 of 3).



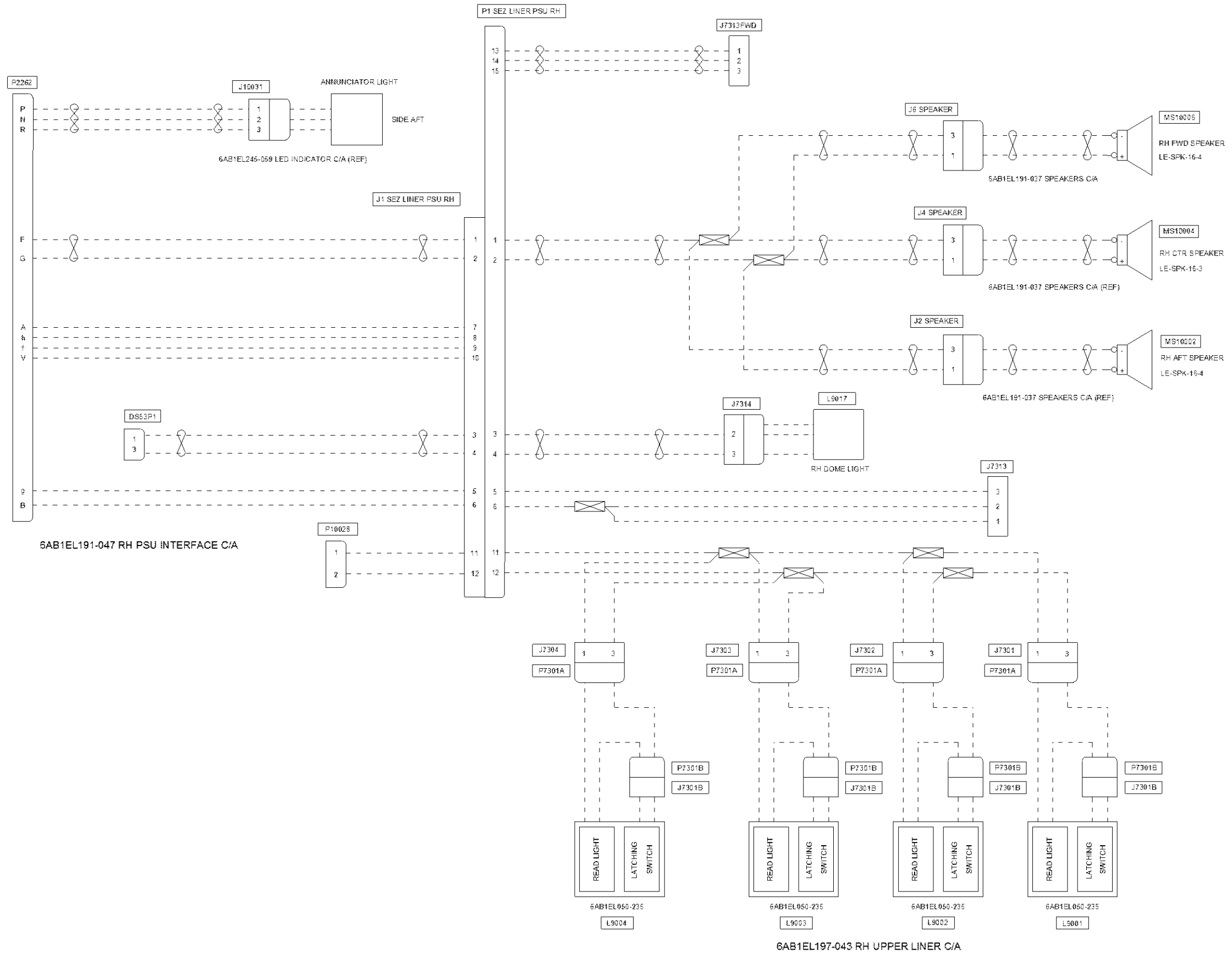
PHASE	OPERATION	RESULT	Operator Signature
39	Repeat the operations at points 46 and 47 for aft right HMI.		
<u>Test 115 V_{AC} Power</u>			
40	Measure output voltage and frequency on the 115 Vac sockets.	Verify that voltage is 115 Vac \pm 2 Vac and that frequency is 60 Hz \pm 0,5 Hz.	
41	Apply a load of 200 W on each 115 Vac socket.	A total load of 400W is applied to the inverter.	
42	Measure output voltage and frequency on the 115 Vac socket.	Verify that voltage is 115 Vac \pm 2 Vac and that frequency is 60 Hz \pm 0,5 Hz.	
<u>Test USB Power</u>			
43	Connect the MP3 reader (or equivalent device) on the USB charger socket.	Verify that the MP3 player is charging.	
44	Repeat the operation at previous point for all USB charger socket.		
<u>Test the Light System</u>			
45	Turn On/Off the button located near the reading light.	Check that reading light is On/Off.	
46	Repeat previous step for all "Reading Light".		

PHASE	OPERATION	RESULT	Operator Signature
47	Open the door of the cubby.	Check that the lights inside cubby are on.	
48	From the cockpit, turn on light inside cabin (if needed ask to AW technician).	Check that the lights inside cabin are on.	
49	From the cockpit, use command to dimming light inside cabin.	Check that the lights inside cabin change intensity correctly.	
50	In the cockpit, push "SEAT BELT" button on the AV900 audio panel (if needed ask to AW technician).	In cabin passenger, check that "Seat Belt" warning indicators are on and gong chime is reproduced on speakers.	
51	In the cockpit, push again "SEAT BELT" button on the AV900 audio panel.	In cabin passenger, check that "Seat Belt" warning indicators are off.	
52	In the cockpit, push "NO SMOKING" button on the AV900 audio panel (if needed ask to AW technician).	In cabin passenger, check that "No Smoking" warning indicators are on and gong chime is reproduced on speakers.	
53	In the cockpit, push again "NO SMOKING" button on the AV900 audio panel.	In cabin passenger, check that "No Smoking" warning indicators are off.	
54	Inside cabin passenger, push the "EMERG LIGHT" button of emergency lights.	Check that the two emergency lights are on.	
55	Inside cabin passenger, push again the "EMERG LIGHT" button of emergency lights.	Check that the two emergency lights are off.	
<u>Test of the External Call (Satcom and GSM)</u>			



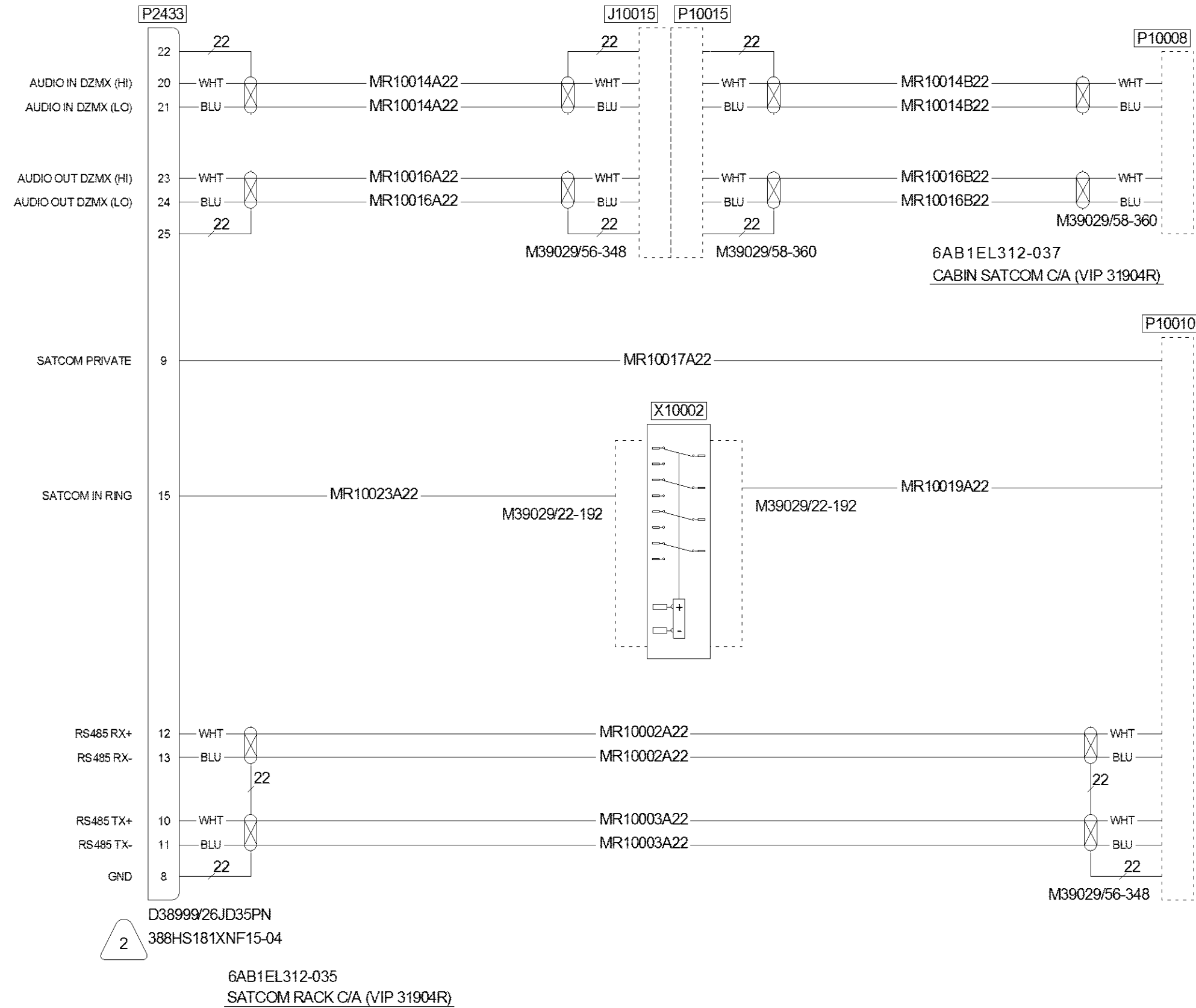
PHASE	OPERATION	RESULT	Operator Signature
	<p>DZMx unit is a dual modem device and with “modem 1” is identified Satcom, while with “modem 2” is identified GSM Modem.</p> <p>Before perform test check, on DZMx control panel, that Satcom and GSM signal are strength enough to perform a call and SIM Card are installed both for GSM and Satcom.</p>		
56	Perform a call from a GSM Device, and according to applicable IFEEL User Manual. Answer to an incoming call”.	<p>Check that:</p> <ul style="list-style-type: none"> · Incoming Call is signaled from HMI. · RING Tone is played on enabled headphone. · Verify that from pilot/co- pilot headphones it is not possible to hear nothing (enable from AV900 appropriate satcom line audio line) · Verify that all other passengers are not involved in the call. · Verify that voices are loud and clear for both side. 	
57	According applicable IFEEL User Manual “Make a GSM call” (Modem 2)	<p>Check that:</p> <ul style="list-style-type: none"> · Verify that from pilot/co- pilot headphones it is not possible to hear nothing (enable from AV900 appropriate audio line) · Verify that all other passengers are not involved in the call. · Verify that voices are loud and clear for both side. 	
58	According to applicable IFEEL User Manual “Make conference call” (Modem 2)	<p>Verify that from pilot/co-pilot headphones it is not possible to hear nothing (enable from AV900 appropriate audio line)</p> <p>Verify that all passengers’ voice and voice of remote talker are loud and clear.</p>	
59	According to applicable IFEEL User Manual “Make conference call + Pilot” (Modem 2). Pilot must answer through AV900 Cab Line.	Verify that all passengers’ voice, Pilot voice and voice of remote talker are loud and clear.	

PHASE	OPERATION	RESULT	Operator Signature
60	According to applicable IFEEL User Manual "Make a GSM call + Pilot" (Modem 2). Pilot must answer through AV900 Cab Line.	Verify that Pilot voice, Passenger voice and voice of remote talker are loud and clear. Verify that all other passengers are not involved in the call	
61	According to applicable IFEEL User Manual "Make a GSM call" (Modem 2) and after established "pass call to pilot". Pilot must enable appropriate audio line from AV900	Verify that Pilot voice and voice of remote talker are loud and clear.	
62	Perform a call from a GSM Device and answer directly from DZMx; after established according to applicable IFEEL User Manual "pass call to cabin". Pilot must enable appropriate audio line from AV900	Verify that Passenger voice and voice of remote talker are loud and clear.	
63	Repeat Step from 56 to 62 for DZMx Satcom modem (modem 1).		



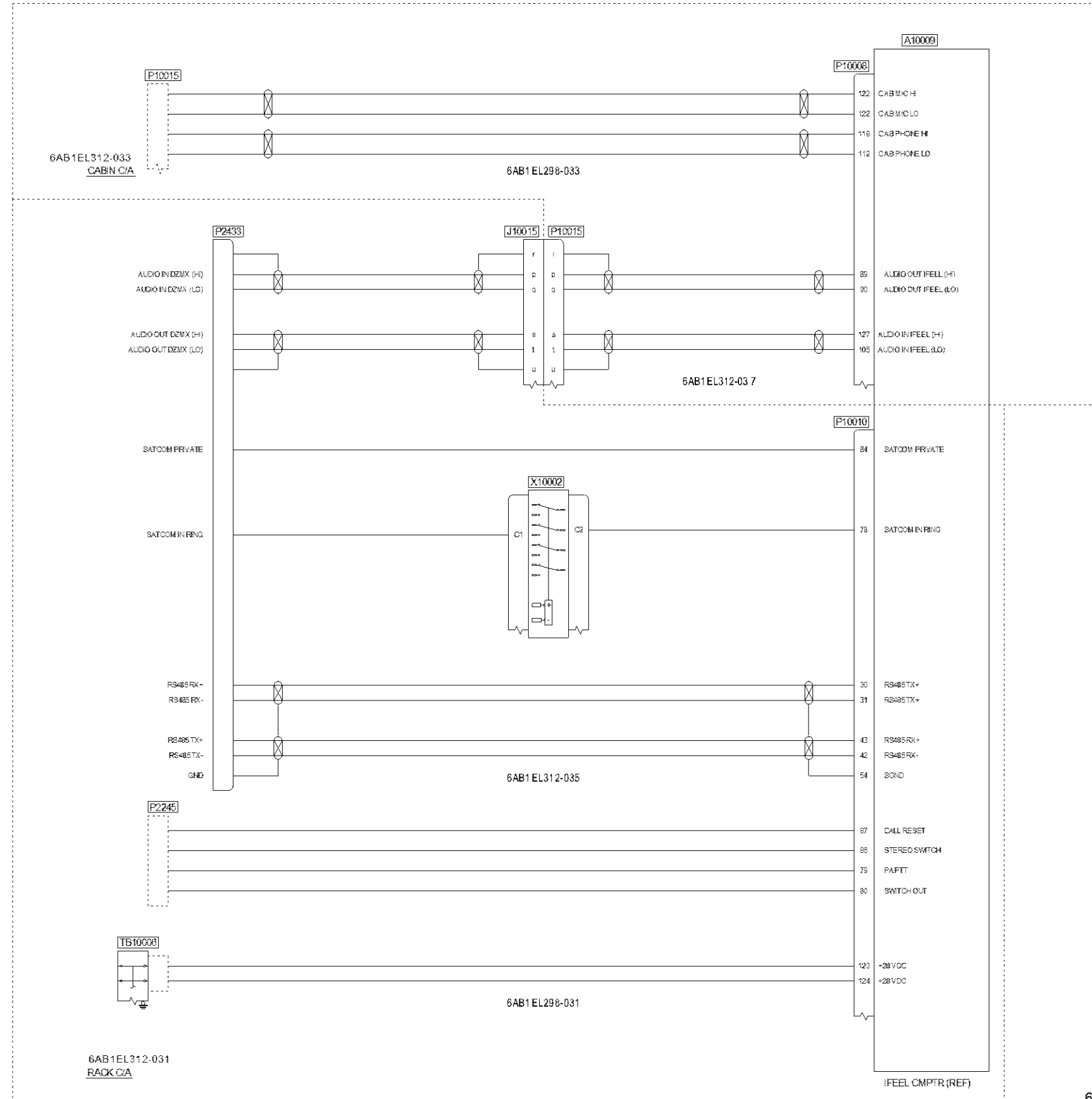
6AB1EL298_SH_11_A

Figure 5-1 31904 wiring diagram (Sheet 11 of 11).



6AB1EL312-081_SH01A_WNM-2-20_3251A

Figure 5-2 31904 retromod wiring diagram (Sheet 1 of 2).



6AB1EL312-081_SH02A_WNM-2-20_3252A

Figure 5-2 31904 retromod wiring diagram (Sheet 2 of 2).

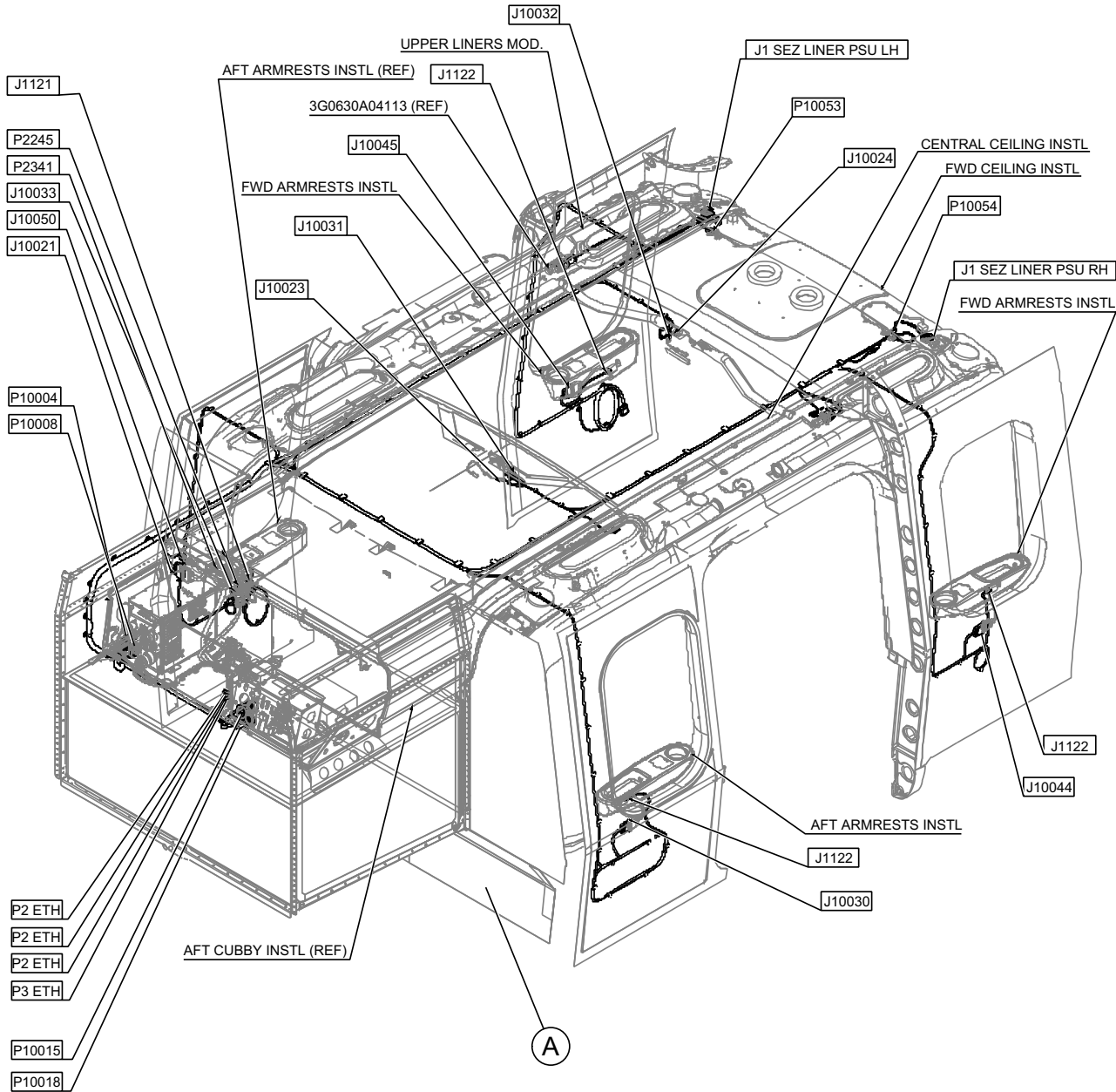
INTENTIONALLY BLANK PAGE



Owner's Manual
for IFEEL ENTERTAINMENT SYSTEM INSTALLATION
P/N 6AB1AD016-001

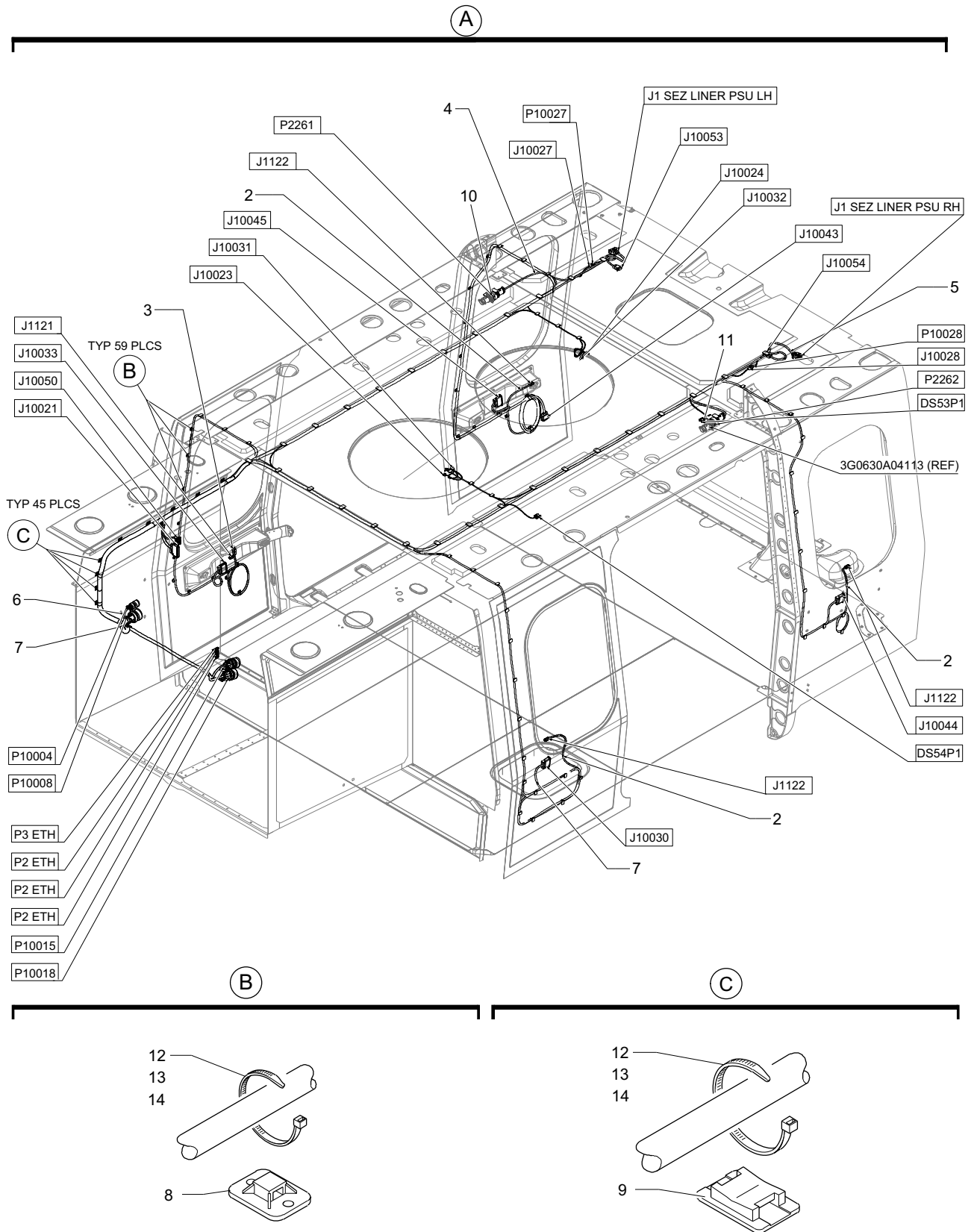
Appendix CA to
6AB1WNM-2-20

FIGURE AND INDEX NUMBER	PART NUMBER	MFR CODE	DESCRIPTION	UNIT PER ASSY	USABLE ON CODE
6-1 0	6AB1KT025-649	A3729	IFEEL INSTALLATION KIT	REF.	
1	6AB1EL296-001	A3729	• ELECTRICAL INSTALLATION IFEEL (For IPB see Figure 6-1)	1	
2	6AB1EL296-003	A3729	• ELECTRICAL INSTALLATION A/C (For IPB see Figure 6-3)	1	
3	6AB1EL310-001	A3729	• STRUCTURE ELECTRICAL RETROMOD (For IPB see Figure 6-1)	1	
4	6AB1EL310-003	A3729	• RACK RETROMOD (For IPB see Figure 6-5)	1	
5	6AB1ME229-009	A3729	• CROSS BEAM INSTALLATION (For IPB see Figure 6-4)	1	
6	6AB1ME428-417	A3729	• CROSS BEAM MODIFICATION (For IPB see Figure 6-5)	1	



6AB1EL296-001A_WNM-2-20_3232A

Figure 6-1 IFEEL Electrical Installation (Sheet 1 of 2).



6AB1EL296-001A_WNM-2-20_3231A

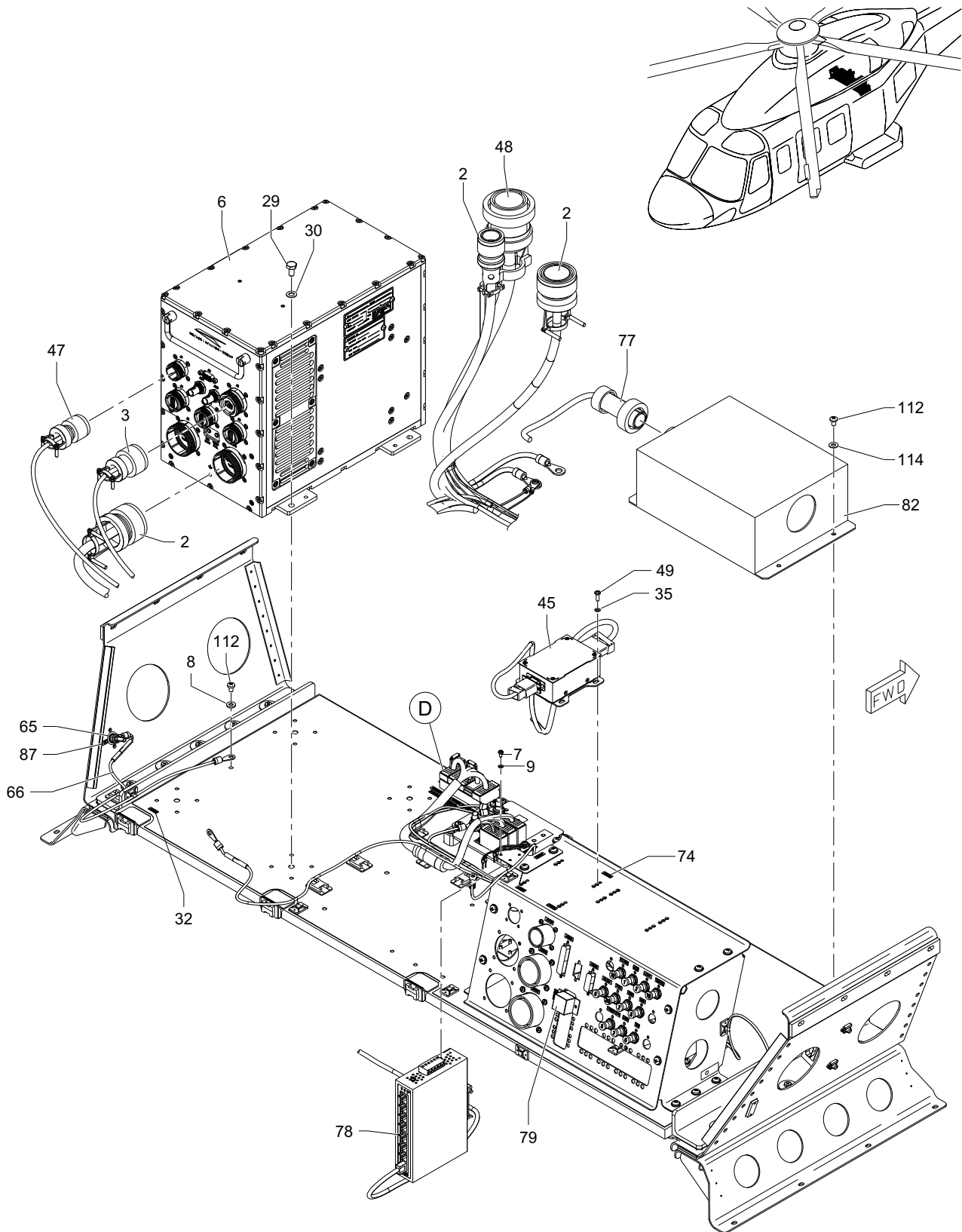
Figure 6-1 IFEEEL Electrical Installation (Sheet 2 of 2).



FIGURE AND INDEX NUMBER	PART NUMBER	MFR CODE	DESCRIPTION	UNIT	USABLE ON	
				PER ASSY	CODE	
6-2	-0	6AB1EL296-001	A3729	ELECTRICAL INSTALLATION IFEEL (For IPB see Figure 6-1)	REF	
	-0	6AB1EL310-001		STRUCTURE ELECTRICAL RETROMOD (VIP 31904R)	REF	
	-1	6AB1EL296-005	A3729	• STRUCTURE ELECTRICAL INSTL IFEEL	1	
	2	6AB1EL179-043	A3729	• • ETH C/A	3	
	3	6AB1EL179-045	A3729	• • ETH C/A	1	
	4	6AB1EL191-045	A3729	• • LH PSU INTERFACE C/A	1	
	5	6AB1EL191-047	A3729	• • RH PSU INTERFACE C/A	1	
	6	6AB1EL274-043	A3729	• • USB EXTENSION C/A	1	
	7	6AB1EL312-033	A3729	• • CABIN C/A (31904R)	1	
	8	6NV-ESP-001-01-01	A3729	• • SUPPORT	59	
	9	6NV-ESP-001-01-03	A3729	• • SUPPORT	45	
	10	6STD051-P2261	A3729	• • DECAL	1	
	11	6STD051-P2262	A3729	• • DECAL	1	
	12	6NV-EMI-002-01-HS	A3729	• • VIDEO C/A	1	
	13	6NV-EMI-002-04-HS	A3729	• • STRAP	2	
	14	6NV-EMI-002-05-HS	A3729	• • STRAP	58	



INTENTIONALLY BLANK PAGE



6AB1EL310-031A_WNM-2-20_3250A

Figure 6-5 Cross beam modification A/C (Sheet 1 of 4).



Owner's Manual
for IFEEL ENTERTAINMENT SYSTEM INSTALLATION
P/N 6AB1AD016-001

Appendix CA to
6AB1WNM-2-20

FIGURE AND INDEX NUMBER	PART NUMBER	MFR CODE	DESCRIPTION	UNIT PER ASSY	USABLE ON CODE
6-5 0	6AB1ME428-417	A3729	CROSS BEAM MODIFICATION (For NHA see Figure 6-1)	REF	
6-5 0	6AB1EL310-003	A3729	RACK RETROMOD (VIP 31904R) (For NHA see Figure 6-1)	REF	
1	6AB1EL310-031	A3729	• CROSS BEAM ASSY EQUIPPED (VIP 31904R)	1	
2	6AB1EL312-031	A3729	• • RACK CABLE ASSY (VIP 31904R)	1	
3	6AB1EL274-057	A3729	• • ETH C/A	1	
4	6STD051-A10003	A3729	• • DECAL	1	
5	6AB1ME514-231	A3729	• • CROSS BEAM ASSY (For IPB see Figure 6-6)	1	
6	6IFHST021-303	A3729	• • IFEEL COMPUTER	1	
7	LN65022-0306	A3729	• • SCREW	8	
8	NAS1149D0363J	A3729	• • WASHER	1	
9	LN9025-0310L	A3729	• • WASHER	8	
10	MS21042L04	80205	• • NUT	4	
11	6STD051-CB10010	80205	• • DECAL	14	
12	6STD063-N-7-420	80205	• • BONDING CABLE	1	
13	MS21042L3	80205	• • NUT	3	
14	MS26574-1	80205	• • BREAKER	1	
15	MS26574-10	80205	• • BREAKER	2	
16	MS26574-20	80205	• • BREAKER	1	
17	MS26574-3	80205	• • BREAKER	3	
18	6STD051-LIGHT	80205	• • DECAL	1	
19	MS26574-2	80205	• • BREAKER	3	
20	MS27039-0805	80205	• • SCREW	2	
21	MS35206-216	80205	• • SCREW	4	
22	MS35206-229	80205	• • SCREW	12	
23	MS21042L5	80205	• • NUT	2	
24	6STD051-HDST	A3729	• • DECAL	1	
25	MS35207-263	80205	• • SCREW	2	
26	6STD063-N-7-490	80205	• • BONDING CABLE	1	
27	MS51957-26	80205	• • SCREW	10	
28	NAS1149D0316J	A3729	• • WASHER	6	
29	AN4-3A	80205	• • BOLT	4	
30	NAS1149D0432J	80205	• • WASHER	6	
31	NAS1149D0563J	80205	• • WASHER, FLAT	4	
32	6STD051-A10009	A3729	• • DECAL	1	
33	NAS1149DN832K	80205	• • WASHER	2	
34	NAS620A4L	80205	• • WASHER	8	
35	NAS620A6L	80205	• • WASHER	20	
36	6STD063-N-9-480	A3729	• • BONDING CABLE	1	
37	6STD051-A10002	A3729	• • DECAL	1	
38	M83413/8-F020CX	A3729	• • DECAL	1	
39	6NV-ESP-001-01-01	A3729	• • SUPPORT	14	
40	6NV-ESP-001-01-03	A3729	• • SUPPORT	12	
41	6NV-ESP-001-01-02	A3729	• • SUPPORT	3	



FIGURE AND INDEX NUMBER	PART NUMBER	MFR CODE	DESCRIPTION	UNIT PER ASSY	USABLE ON CODE
42	001755-203-02	80205	•• MODULE	1	
43	001758-202-02	80205	•• MODULE	3	
44	6NV-EEQ-038-001	A3729	•• ELIMINATOR FILTER	1	
45	6MEQ-2350A002	A3729	•• RS485/A429 CONVERTER (RX-TX)	1	
46	6NV-EEQ-025-001	A3729	•• POWER SUPPLY	1	
47	6AB1EL274-051	A3729	•• IFEEL POWER C/A	1	
48	6AB1EL274-055	A3729	•• INTERFACE POWER C/A	1	
49	MS35206-229	80205	•• SCREW	12	
50	6STD051-A10008	A3729	•• DECAL	1	
51	6STD051-J13015	A3729	•• DECAL	1	
52	6STD051-AC_OUT	A3729	•• DECAL	1	
53	6STD051-CMPTR	A3729	•• DECAL	1	
54	6STD051-E6	A3729	•• DECAL	1	
55	6STD051-A10016	A3729	•• DECAL	1	
56	6STD051-A10001	A3729	•• DECAL	1	
57	6STD051-E2	A3729	•• DECAL	1	
58	6STD051-E4	A3729	•• DECAL	1	
59	6STD051-J17101	A3729	•• BUS BAR	1	
60	6STD051-CB10008	A3729	•• DECAL	1	
61	6STD051-P11034	A3729	•• DECAL	1	
62	6STD051-J10015	A3729	•• DECAL	1	
63	6STD051-J10018	A3729	•• DECAL	1	
64	6STD051-X10002	A3729	•• DECAL	1	
65	M83413/8-F015BX	A3729	•• DECAL	1	
66	M83413/8-E00BX	A3729	•• SPLITTER CVBS	3	
67	NAS620A10L	80205	•• WASHER	2	
68	6STD051-R10001AN	A3729	•• DECAL	1	
69	6STD051-PWR	A3729	•• DECAL	1	
70	6STD051-TB10001	A3729	•• DECAL	1	
71	6STD051-TB10002	A3729	•• DECAL	1	
72	6STD051-TB10006	A3729	•• DECAL	1	
73	6STD051-TB10004	A3729	•• DECAL	1	
74	6STD051-P11035	A3729	•• DECAL	1	
75	6STD051-FILTER	A3729	•• DECAL	1	
76	6STD051-TOUCH_ETH	A3729	•• DECAL	1	
77	6AB1EL274-053	A3729	•• A.C. RACK C/A	1	
78	6NV-EEQ-016-005	A3729	•• SWITCH ETHERNET	1	
79	M220-D4N003		•• RELAY	1	
80	6STD051-E5	A3729	•• DECAL	1	
81	6STD051-CB10013	A3729	•• BREAKER	1	