

Temporary Maintenance Instruction TMI 189-049

Tail rotor distributor - Resistance check

**All AW189 Helicopters that install Full
Ice Protection System (FIPS) kit P/N
8G3000F00111 and P/N 8G3000F00311**

The technical content of this document is approved under the authority of DOA nr. EASA.21J.005.

The present TMI will be evaluated for its introduction in the standard set of Technical Publication.

If no further notice is received, the present document expires on: October 18th 2022.

2021-10-18

Introduction

This TMI is to give you the evidence of the updated procedures for performing the resistance check of the Tail rotor distributor.

The procedures contained in this TMI update and supersede the contents of the Data Module 89-A-30-61-05-00A-366A-A Tail rotor distributor - Resistance check.

The content of this TMI will be endorsed within the applicable Maintenance Manual within IETP Issue 22.

Tail rotor distributor - Resistance check

Table of contents

References 1

Preliminary requirements 2

Procedure 3

Requirements After Job Completion 4

List of tables

1 References 1

2 Access points 2

3 Zones 2

4 Required Conditions 2

5 Support Equipment 2

6 Supplies 2

7 Spares 3

List of figures

1 Tail rotor distributor - Resistance check 5

References

Table 1 References

Data Module	Title
89-A-00-20-00-00A-120A-A	Helicopter safety - Pre-operation (make helicopter safe for maintenance)
89-A-12-41-00-00A-730A-A	External electrical power - Connect procedure
89-A-25-80-00-00A-010A-A	Insulation and lining - General data

Table 2 Access points

Access Panel / Door Id	Data Module
168A	89-A-06-41-00-00A-010A-A

Table 3 Zones

Zone ID	Data Module
160, 310	89-A-06-30-00-00A-010A-A

Preliminary Requirements

Required Conditions

Table 4 Required Conditions

Conditions	Data Module/Technical Publication
The helicopter must be safe for maintenance.	89-A-00-20-00-00A-120A-A
The access door 168A must be opened.	89-A-06-41-00-00A-010A-A
Connect the external electrical power to the helicopter.	89-A-12-41-00-00A-730A-A

Support Equipment

Table 5 Support Equipment

Nomenclature	Identification No.	Qty
Multimeter	ZZ-00-00	1

Supplies

Table 6 Supplies

Nomenclature
No Supplies

Spares

Table 7 Spares

Nomenclature
No Spares

Safety Conditions

No Safety Condition

Procedure

- 1 During this procedure, you must put/remove the applicable caps on all the disconnected electrical connectors. Do this immediately after/before you disconnect/connect each electrical connector.
- 2 Remove the necessary lining panels of the baggage compartment to get access to the tail rotor distributor (1, [Figure 1](#)). Refer to [89-A-25-80-00-00A-010A-A](#).
- 3 Disconnect the electrical connector A332P2 (2) from the electrical connector A332J2 (3) of the tail rotor distributor (A332) (1).
- 4 Measure with the [Multimeter \(ZZ-00-00\)](#) the resistance between these pins of the electrical connector A332J2 (3):
 - Between the pin F and the pin G
 - Between the pin U and the pin a
 - Between the pin V and the pin W
 - Between the pin J and the pin K.Make sure that the resistance is 1.4 ± 0.14 k Ω .
- 5 Measure with the [Multimeter \(ZZ-00-00\)](#) the resistance between these pins of the electrical connector A332J2 (3) and a ground point:
 - The pin B
 - The pin S
 - The pin P
 - The pin Y.Make sure that the resistance is 1 M Ω or more.
- 6 With the [Multimeter \(ZZ-00-00\)](#) do a continuity check between these pins of the electrical connector A332J2 (3) and a ground point:
 - The pin F
 - The pin G
 - The pin U
 - The pin a
 - The pin V

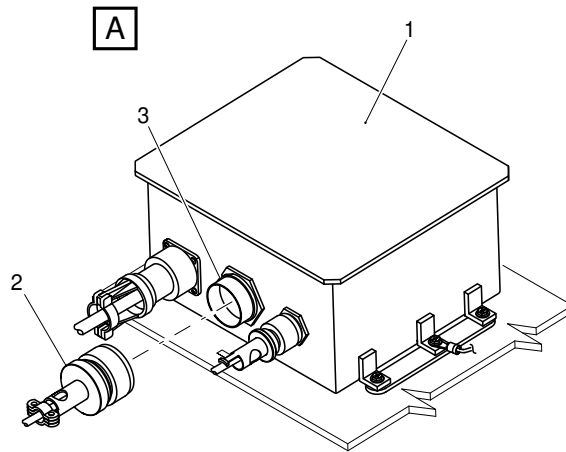
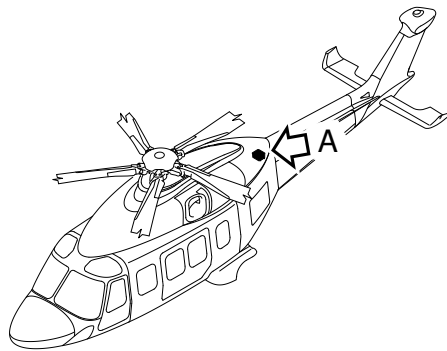
- The pin W
- The pin J
- The pin K.

Make sure that the resistance is no continuity.

- 7 Connect the electrical connector A332P2 (2) to the electrical connector A332J2 (3) of the tail rotor distributor (A332) (1).
- 8 Install the lining panels of the baggage compartment you removed before. Refer to [89-A-25-80-00-00A-010A-A](#).

Requirements After Job Completion

- 1 Remove all the tools and the other items from the work area. Make sure that the work area is clean.
- 2 Close the access door 168A. Refer to [89-A-06-41-00-00A-010A-A](#)



ICN-89-A-306105-G-00001-14614-A-002-01

Figure 1 Tail rotor distributor - Resistance check

THIS PAGE INTENTIONALLY LEFT BLANK

End of Data Module