

Temporary Maintenance Instruction TMI 139-478 Rev. A

Emergency light switch S13 - Replacement

All AW139 Helicopters

The technical content of this document is approved under the authority of DOA nr. EASA.21J.005.

The present TMI will be evaluated for its introduction in the standard set of Technical Publication.

*If no further notice is received, the present document expires on: **January, 28th 2022.***

2021-01-28

Introduction

This TMI provides the instructions and requirements to perform Emergency light switch S13 - Replacement (remove and install a new item). All the information reported in the subsequent pages will be updated in the IETP revision 39.

Table of contents

	<i>Page</i>
References	1
Preliminary requirements	2
Procedure	2
Requirements after job completion	3

List of tables

	<i>Page</i>
1. References	1
2. Access point	1
3. Zones	1
4. Required conditions	2
5. Support Equipment	2
6. Supplies	2
7. Spares	2

List of figures

	<i>Page</i>
1. Left window lining panel	4

References

Table 1 References

Data Module	Title
39-A-00-20-00-00A-120A-A	Helicopter safety - Pre-operation (make helicopter safe for maintenance)
39-A-33-51-00-00A-340A-A	Emergency lighting system - Function test
39-A-25-82-03-00A-720A-A	Left hinged lining panel - Install procedure

Table 2 Access points

Access Panel / Door Id	Data No
Access Point	

Table 3 Zones

Zone ID	Data Module
No Zones	

Preliminary Requirements

Required Conditions

Table 4 Required Conditions

Conditions	Data Module/Technical
The helicopter must be safe for maintenance	39-A-00-20-00-00A-120A-A

Support Equipment

Table 5 Support Equipment

Nomenclature	Identification No.	Qty
No support equipment		

Supplies

Table 6 Supplies

Nomenclature	Identification No.	Qty
No Supplies		

Spares

Table 7 Spares

Nomenclature	Identification No.	Qty
Emergency light switch	33-51-00-01-006	1

Safety Conditions

No Safety Condition

Procedure

Note

The left window lining-panel is referred to in this procedure as the lining panel.

Note

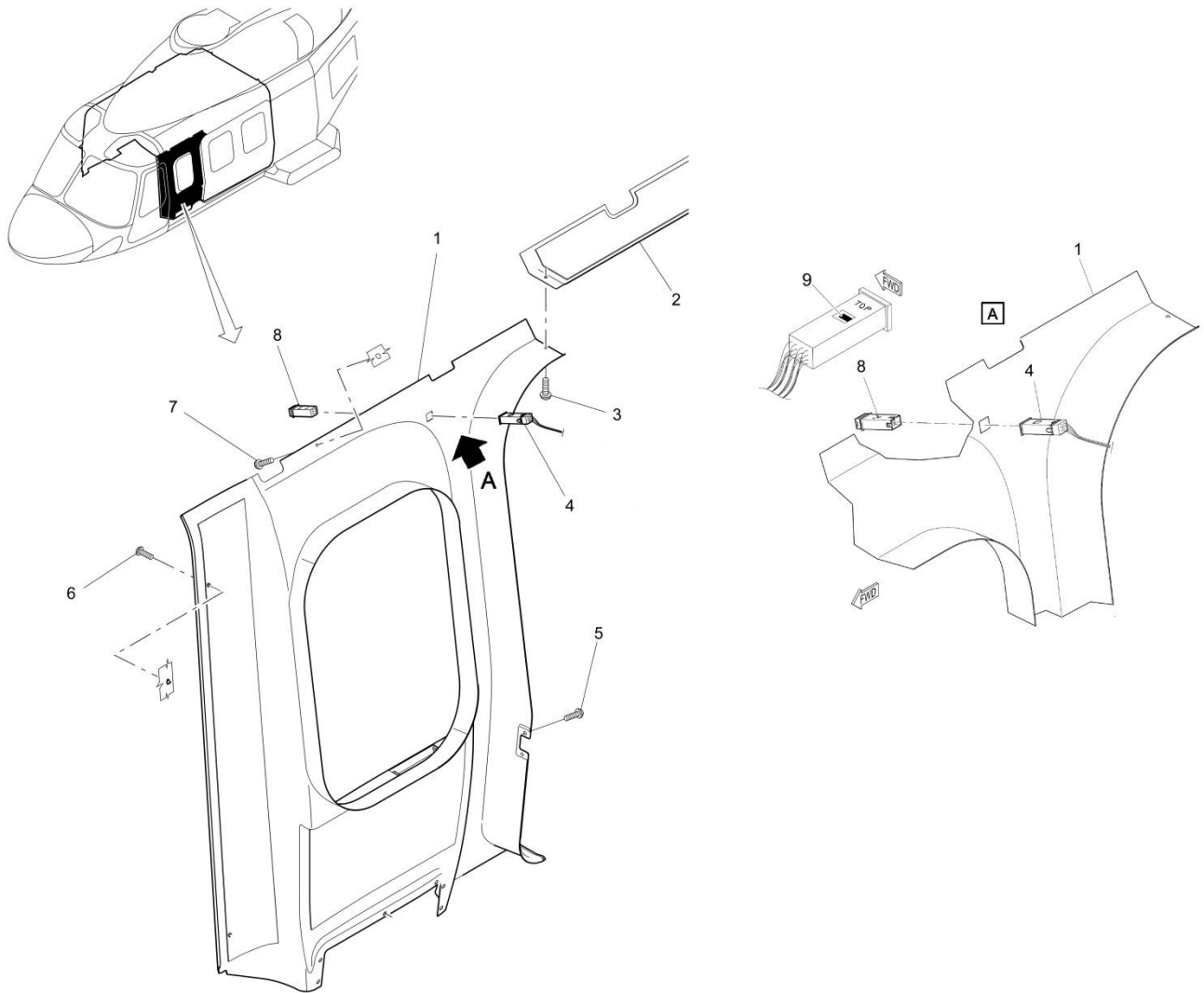
During this procedure, you must put the applicable caps on all the disconnected electrical connectors.

Do this immediately after you disconnect each electrical connector.

1. Get access to the cabin.
2. Remove the two countersunk screws (5) from the lock slot of the left cabin door.
3. Remove the screw (3) from the lining panel (1) and the left lining panel (2).
4. Remove the two screws (6) from the forward side of the lining panel (1).
5. Carefully remove the lining panel (1) as the cables will let.
6. Push the pawl of the switch (9) in order to release it from the sleeve.
7. Sustain the support sleeve (4) during the removal the emergency light switch (8) from it.
8. Remove the emergency light switch (8) from the helicopter.
9. Put the support sleeve (4) in its position on the left window lining-panel (1).
10. Put the new emergency light switch (8) in its position in the support sleeve (4) through the panel.
Make sure that the mark on the button is in the correct position.
11. Push the emergency light switch (8) in the support sleeve (4).
12. After the switch has been inserted in the panel, tighten the pawl (9) to secure the switch.
13. Put the lining panel (1) in its position between the lining panels and the structure. Make sure that the end of the left lining panel (2) is below the lining panel (1).
14. Hold the lining panel (1) in its position with your hands.
15. Make sure that all the holes of the lining panel (1) and the related holes of the structure are aligned.
16. Install the two screws (6) at the forward side of the lining panel (1).
17. Install the two screws (6).
18. Install the screw (7) at the top of the lining panel (1).
19. Install the screw (7).
20. Install the two countersunk screws (5) on the lock slot of the left cabin door.
21. Install the two countersunk screws (5).
22. Install the screw (3) that attaches the lining panel (1) and the left lining panel (2) to the structure.
23. Install the screw (3).
24. Close the left hinged lining-panel. Refer to 39-A-25-82-03-00A-720A-A.
25. Do a check if the lining panel (1) correctly agrees with the adjacent panels and structure.

Requirements After Job Completion

1. Remove all the tools and the other items from the work area. Make sure that the work area is clean.
2. Do the functional check of the emergency exit lighting system. Refer to 39-A-33-51-00-00A-340A-A



ICN-39-A-TMI478-G-A0126-01002-A-001-01

Figure 1: Left window lining panel