



TECHNICAL INFORMATION LETTER

TIL N° T-109-23-001 T-109E-23-001

T-109L-23-001 T-109S-23-001

T-109SP-23-001 T-119-23-002

DATE: March 13, 2023

REV.: /

To: Leonardo Helicopters products
Owners / Operators / Service Centres

SUBJECT: Tail rotor pitch link installation procedures update

Helicopters Affected: All A109/AW109 and A119/AW119MKII

Dear Customer,

With the present letter, Leonardo Helicopters (LH) would like to inform you about the upcoming release of the updated procedures of the tail rotor pitch link installation.

LH has been informed about some cases of scratches all around the root of the tail rotor blade pitch horn PN 709-0160-49-101 during a scheduled inspection of the rotating controls installation. The analysis of the events highlighted that the consequence of the scratches detected is determined by an improper installation of the countersunk washer P/N MS20002C6 of tail rotor pitch link installation.

LH highlights the importance to follow always the IETP Aircraft Maintenance Publications (AMP) procedures listed in Annex A.

In addition to the above recommendation, LH will update the content of the procedures listed in Annex A to further underline that the washer P/N MS20002C6 has to be placed with the countersunk side towards the base of the blade pin (Ref. to Annex B picture).

The revised procedure will be published with IETP Issues detailed in Annex A.

Should you need any additional information, please do not hesitate to refer to your usual contact within LH Engineering Support Team.

Yours Sincerely,

Marco D'Adamo
Head of Product Support Engineering

Tail rotor pitch link installation procedures update

Annex A

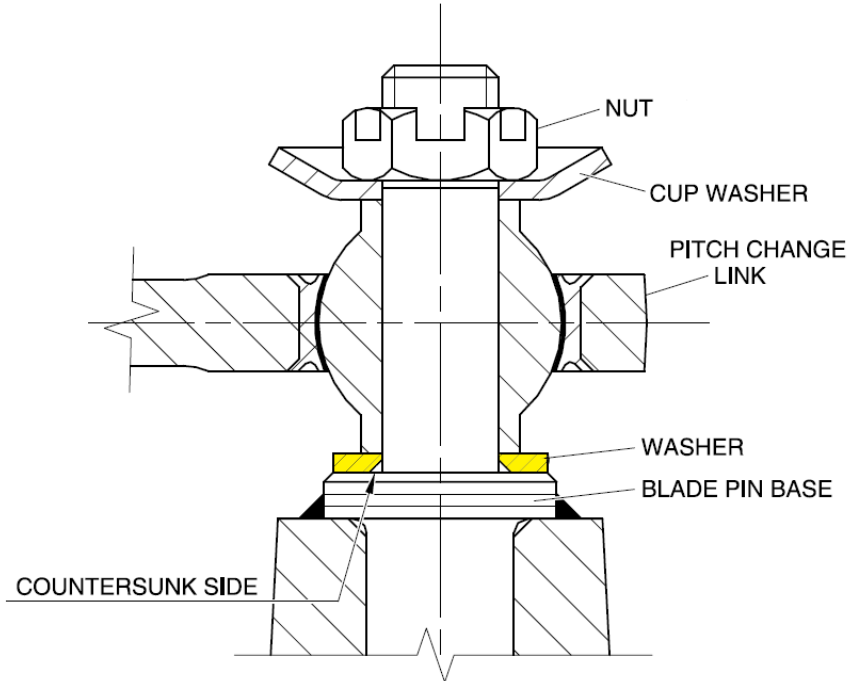
H/C MODEL	DM/ATA SECTION	DM ISSUE / ATA SECTION REV.	DOCUMENT TITLE	IETP ISSUE
A109S	AMP DM 0B-A-64-31-01-00A-720A-A	9	Pitch link - Install procedure	31 (Updated on 2023-03-10)
A109TK	AMP DM 0B-A-64-31-01-00A-720A-A	9	Pitch link - Install procedure	31 (Updated on 2023-03-10)
AW109SP	AMP DM 0B-A-64-31-01-00A-720A-A	9	Pitch link - Install procedure	31 (Updated on 2023-03-10)
AW109SR	AMP DM 0B-A-64-31-01-00A-720A-A	9	Pitch link - Install procedure	31 (Updated on 2023-03-10)
A109LUH	AM DM 09-A-64-31-30-00A-720A-A	10	Pitch change control link - Install procedure	36 ⁽¹⁾ (Updated on 2023-03-10)
A109A/All	MM 64-00	5	Pitch change mechanism	16 (Updated on 2023-03-10)
A109C	MM 64-00-12	5	Tail Rotor Hub and Blade assembly - Installation	15 (Updated on 2023-03-10)
A109K2	MM 64-00-15	5	Tail Rotor Hub and Blade assembly - Installation	16 (Updated on 2023-03-10)
A109K2 10001-10015 & 10027	MM 64-00-17	6	Tail rotor pitch change control link - Install procedure	7 (Updated on 2023-03-10)
	MM 64A-00-18	6	Tail rotor hub and blade assembly - Install procedure	
	MM 64A-11-6	5	Tail rotor blades – Install procedure	
A109E	MM 64-31-5	16	Pitch change mechanism	33 (Updated on 2023-03-10)
	MM 64-00-14	14	Tail rotor hub and blade assembly – Install Procedure	
	MM 64A-00-12	14	Tail rotor hub and blade assembly – Install Procedure	
	MM 64A-11-6	16	Tail rotor blades – Install procedure	
A119/AW119MKII	AMP DM 19-A-64-30-00-00A-720A-A	2	Rotating controls - Install procedure	29 (Updated on 2023-04-14)

(1) IETP issue applicable to A109LUH SWE Helicopters. For the other A109LUH helicopter models refer to the latest IETP issue available, updated on 2023-03-10.

List of maintenance procedures updated

Annex B

SCHEMATIC SECTION



Countersunk washer installation detail