
SERVICE BULLETIN

N° **189-381**

OPTIONAL

DATE: August 3, 2023

REV. : /

TITLE

ATA 11 – ADDITIONAL MARKINGS FOR CS26 AMDT 4 KIT INSTALLATION

REVISION LOG

First Issue

An appropriate entry should be made in the aircraft log book upon accomplishment.
If ownership of aircraft has changed, please, forward to new owner.

1. PLANNING INFORMATION

A. EFFECTIVITY

NOTE

This SB is applicable to all AW189 helicopters operating under EASA authority that make over water operations in accordance with point CAT.IDE.H.320(a) of Annex IV to Regulation (EU) No 965/2012.

Part I

AW189 helicopters equipped with:

- cabin sliding doors;
- emergency exits equipped with internal pull tab P/N 8G9500L00151 and external pull tab P/N 8G9500L00251 or pull tabs P/N 8G9500A00731.

Part II

AW189 helicopters equipped with:

- cabin hinged doors;
- emergency exits equipped with internal pull tab P/N 8G9500L00151 and external pull tab P/N 8G9500L00251.

Part III

AW189 helicopters equipped with:

- cabin hinged doors;
- emergency exits equipped with pull tabs P/N 8G9500A00731.

Part IV

AW189 helicopters equipped with:

- cabin sliding doors
- emergency exits equipped with pull straps.

Part V

AW189 helicopters equipped with “kit life rafts 21 pax” P/N 8G2560F00511 or P/N 8G2560F00512.

B. COMPLIANCE

At Customer's option.

C. CONCURRENT REQUIREMENTS

N.A.

D. REASON

Leonardo Helicopters (LH) has developed this Service Bulletin in order to meet the new ditching requirements of EASA “Additional Airworthiness Specifications for Operations” CS 26 Amdt 4, regarding the helicopters that make over water operations.

This Service Bulletin is issued in order to provide the necessary instructions on how to perform the “kit CS26 yellow-black marking” P/N 8G2560F02211.

LH issued this SB for the following reason:

Helicopter Reliability/Maintainability	
Product Improvement	
Obsolescence	
Customization	✓
Product/Capability Enhancement	

E. DESCRIPTION

The purpose of this Service Bulletin is to provide the necessary instructions to mark each operational device of emergency exits provided for flight crew and passengers (“Push Here” label, pull tab, pull strap) and external life-raft activation handle with yellow and black stripes, in order to make them more visible under water in case of a ditching.

This Service Bulletin is divided in five (5) parts:

Part I thru Part IV provide the necessary instructions on how to add CS26 markings on internal and external operational devices of emergency exits, in accordance with the helicopter configuration;

Part V provides the necessary instructions on how to install CS26 markings around the life-rafts activation handles on sponsons.

F. APPROVAL

The technical content of this Service Bulletin is approved under the authority of DOA nr. EASA.21.J.005. For helicopters registered under other Aviation Authorities, before applying the Service Bulletin, applicable Aviation Authority approval must be checked within Leonardo Helicopters customer portal.

EASA states mandatory compliance with inspections, modifications or technical directives and related time of compliance by means of relevant Airworthiness Directives.

If an aircraft listed in the effectivity embodies a modification or repair not LH certified and affecting the content of this Service Bulletin, it is responsibility of the Owner/Operator to obtain a formal approval by Aviation Authority having jurisdiction on the aircraft, for any adaptation necessary before incorporation of the present Service Bulletin.

G. MANPOWER

To comply with this Service Bulletin the following MMH are deemed necessary:

Part I: approximately two (2);

Part II: approximately two (2);

Part III: approximately two (2);

Part IV: approximately seven (7);

Part V: approximately one (1).

MMH are based on hands-on time and can change with helicopter configuration, personnel and facilities available. MMH are not comprehensive of the overall hours necessary to get access to work areas and to remove all the equipment that interferes with the application of the prescribed instructions.

H. WEIGHT AND BALANCE

N.A.

I. REFERENCES

I.1 PUBLICATIONS

Following Data Modules refer to AMP:

<u>DATA MODULE</u>	<u>DESCRIPTION</u>	<u>PART</u>
DM01 89-A-00-20-00-00A-120A-A	Helicopter safety - Pre-operation (make helicopter safe for maintenance)	All
DM02 89-A-11-00-01-00A-520A-A	Decal (polyester film) - Remove I, II, III, IV procedure	
DM03 89-A-11-00-01-00A-720A-A	Decal - Install procedure	All
DM04 89-A-56-21-03-00A-920A-A	Left aft cabin window - Replacement	I, II, III, IV
DM05 89-A-56-21-04-00A-920A-A	Right aft cabin window - Replacement	I, II, III, IV
DM06 89-A-56-21-01-00A-920A-A	Left forward cabin window - Replacement	IV
DM07 89-A-56-21-02-00A-920A-A	Right forward cabin window - Replacement	IV

<u>DATA MODULE</u>	<u>DESCRIPTION</u>	<u>PART</u>
DM08 89-A-56-31-01-00A-920A-A	Left cockpit door window - Replacement	IV
DM09 89-A-56-31-02-00A-920A-A	Right cockpit door window - Replacement	IV
DM10 89-A-56-32-01-00A-920A-A	Left cabin door window - Replacement	IV
DM11 89-A-56-32-02-00A-920A-A	Right cabin door window - Replacement	IV

I.2 ACRONYMS & ABBREVIATIONS

AMDI	Aircraft Material Data Information
AMP	Aircraft Maintenance Publication
AR	As Required
DM	Data Module
DOA	Design Organization Approval
EASA	European Union Aviation Safety Agency
FWD	Forward
IPD	Illustrated Parts Data Publication
ITEP	Illustrated Tool and Equipment Publication
LH	Left Hand
LR	Life Raft
LWR	Lower
MMH	Maintenance Man Hours
N.A.	Not Applicable
P/N	Part Number
RH	Right Hand
SB	Service Bulletin

I.3 ANNEX

N.A.

J. PUBLICATIONS AFFECTED

AW189 Aircraft Maintenance Publication (AMP);
 AW189 Illustrated Parts Data Publication (IPD).

K. SOFTWARE ACCOMPLISHMENT SUMMARY

N.A.

2. MATERIAL INFORMATION

A. REQUIRED MATERIALS

A.1 PARTS

PART I

#	P/N	ALTERNATIVE P/N	DESCRIPTION	Q.TY	LVL	NOTE	LOG P/N
1	8G2560F02211		KIT CS26 YELLOW-BLACK MARKING	REF	.		-
2	8G1100A00311		EXT/INT INSTALLATION MARK CS26 SLIDE ALL TABS	REF	..		-
3	3G1130A27153		Decal CS26 push here	28	...	(1)	189-381L1
4	8G1120A24851		Ext pull tab CS26 up	10	...	(1)	189-381L1
5	8G1120A24951		Ext pull tab CS 26 LWR	10	...	(1)	189-381L1
6	8G1130A53851		Int pull tab up	10	...	(1)	189-381L1
7	A180A016E22	A180A016E21	Decal	AR	.	(6)	-
8	8G1100A00911		EXT/INT INSTALLATION MARK CS26 BUBBLE WINDOW	REF	..	(3)	-
9	3G1130A27153		Decal CS26 push here	4	...	(1)	189-381L1
10	8G1100A00851		Release handle mark CS26	4	...	(1)	189-381L1
11	8G1120A25251		Decal window handle	1	...	(1)	189-381L1
12	8G1120A25351		Decal window handle RH	1	...	(1)	189-381L1
13	A180A016E22	A180A016E21	Decal	AR	.	(6)	-
14	8G1100A00711		EXT/INT INSTALLATION MARK CS26 4TH ROW STRAP	REF	..	(4)	-
15	3G1130A27153		Decal CS26 push here	2	...	(1)	189-381L1
16	A487A005A		Strap assembly	REF	...		-
17	3G1130A27152	3G5211A14432	Decal CS26 pull strap	2	...	(2) (5)	189-381L1
18	A180A016E22	A180A016E21	Decal	AR	.	(6)	-

PART II

#	P/N	ALTERNATIVE P/N	DESCRIPTION	Q.TY	LVL	NOTE	LOG P/N
19	8G2560F02211		KIT CS26 YELLOW-BLACK MARKING	REF	.		-
20	8G1100A00311		EXT/INT INSTALLATION MARK CS26 SLIDE ALL TABS	REF	..		-
21	3G1130A27153		Decal CS26 push here	30	...	(1)	189-381L2
22	8G1120A24851		Ext pull tab CS26 up	10	...	(1)	189-381L2
23	8G1120A24951		Ext pull tab CS 26 LWR	10	...	(1)	189-381L2
24	8G1130A53851		Int pull tab up	10	...	(1)	189-381L2
25	A180A016E22	A180A016E21	Decal	AR	.	(6)	-
26	8G1100A00911		EXT/INT INSTALLATION MARK CS26 BUBBLE WINDOW	REF	..	(3)	-
27	3G1130A27153		Decal CS26 push here	4	...	(1)	189-381L2
28	8G1100A00851		Release handle mark CS26	4	...	(1)	189-381L2
29	8G1120A25251		Decal window handle	1	...	(1)	189-381L2
30	8G1120A25351		Decal window handle RH	1	...	(1)	189-381L2
31	A180A016E22	A180A016E21	Decal	AR	.	(6)	-

#	P/N	ALTERNATIVE P/N	DESCRIPTION	Q.TY	LVL	NOTE	LOG P/N
32	8G1100A00711		EXT/INT INSTALLATION MARK CS26 4TH ROW STRAP	REF	..	(4)	-
33	3G1130A27153		Decal CS26 push here	2	...	(1)	189-381L2
34	A487A005A	3G5211A14432	Strap assembly	REF	...		-
35	3G1130A27152		Decal CS26 pull strap	2	...	(2) (5)	189-381L2
36	A180A016E22	A180A016E21	Decal	AR	.	(6)	-

PART III

#	P/N	ALTERNATIVE P/N	DESCRIPTION	Q.TY	LVL	NOTE	LOG P/N
37	8G2560F02211		KIT CS26 YELLOW-BLACK MARKING	REF	.		-
38	8G1100A00311		EXT/INT INSTALLATION MARK CS26 SLIDE ALL TABS	REF	..		-
39	3G1130A27153		Decal CS26 push here	28	...	(1)	189-381L3
40	8G1120A24851		Ext pull tab CS26 up	10	...	(1)	189-381L3
41	8G1120A24951		Ext pull tab CS 26 LWR	10	...	(1)	189-381L3
42	8G1130A53851		Int pull tab up	10	...	(1)	189-381L3
43	A180A016E22	A180A016E21	Decal	AR	.	(6)	-
44	8G1100A00911		EXT/INT INSTALLATION MARK CS26 BUBBLE WINDOW	REF	..	(3)	-
45	3G1130A27153		Decal CS26 push here	4	...	(1)	189-381L3
46	8G1100A00851		Release handle mark CS26	4	...	(1)	189-381L3
47	8G1120A25251		Decal window handle	1	...	(1)	189-381L3
48	8G1120A25351		Decal window handle RH	1	...	(1)	189-381L3
49	A180A016E22	A180A016E21	Decal	AR	.	(6)	-
50	8G1100A00711		EXT/INT INSTALLATION MARK CS26 4TH ROW STRAP	REF	..	(4)	-
51	3G1130A27153		Decal CS26 push here	2	...	(1)	189-381L3
52	A487A005A	3G5211A14432	Strap assembly	REF	...		-
53	3G1130A27152		Decal CS26 pull strap	2	...	(2) (5)	189-381L3
54	A180A016E22	A180A016E21	Decal	AR	.	(6)	-

PART IV

#	P/N	ALTERNATIVE P/N	DESCRIPTION	Q.TY	LVL	NOTE	LOG P/N
55	8G2560F02211		KIT CS26 YELLOW-BLACK MARKING	REF	.		-
56	8G1100A00511		EXT/INT INSTALLATION MARK CS26 SLIDE ALL STRAP	REF	..		-
57	3G1130A27153		Decal CS26 push here	28	...	(1)	189-381L4
58	A487A003A	3G5211A14431	Strap assembly	REF	...		-
59	3G1130A27152		Decal CS26 pull strap	16	...	(2) (5)	189-381L4
60	A487A005A	3G5211A14432	Strap assembly	REF	...		-
61	3G1130A27152		Decal CS26 pull strap	2	...	(2) (5)	189-381L4
62	A487A001A	8G5212A23731	Strap assy nylon for emergency window	REF	...		-
63	3G1130A27152		Decal CS26 pull strap	2	...	(2) (5)	189-381L4
64	A180A016E22	A180A016E21	Decal	AR	.	(6)	-
65	8G1100A00911		EXT/INT INSTALLATION MARK CS26 BUBBLE WINDOW	REF	..	(3)	-
66	3G1130A27153		Decal CS26 push here	4	...	(1)	189-381L4
67	8G1100A00851		Release handle mark CS26	4	...	(1)	189-381L4
68	8G1120A25251		Decal window handle	1	...	(1)	189-381L4

#	P/N	ALTERNATIVE P/N	DESCRIPTION	Q.TY	LVL	NOTE	LOG P/N
69	8G1120A25351		Decal window handle RH	1	...	(1)	189-381L4
70	A180A016E22	A180A016E21	Decal	AR	.	(6)	-

PART V

#	P/N	ALTERNATIVE P/N	DESCRIPTION	Q.TY	LVL	NOTE	LOG P/N
71	8G2560F02211		KIT CS26 YELLOW-BLACK MARKING	REF	.		-
72	8G1120A25011		EXTERNAL MARK KIT SPONSON LIFERAFT CS26 INSTALLATION	REF	..		-
73	8G1120A25151		Decal stripe vertical internal LR	2	...	(1)	189-381L5
74	8G1120A25451		Decal stripe vertical external LR	2	...	(1)	189-381L5
75	8G1120A25551		Decal stripe horizontal LR	2	...	(1)	189-381L5

Refer also to IPD for the spares materials required to comply with the AMP DMs referenced in the accomplishment instructions.

A.2 CONSUMABLES

The following consumable materials, or equivalent, are necessary to accomplish this Service Bulletin:

#	SPEC./LH CODE NUMBER	DESCRIPTION	Q.TY	NOTE	PART
76	Commercial	Yarn, synthetic commercial (8,0 Kg minimum breaking load). Colour red, n°31136 per FED-STD-595.	AR	(7)	I, II, III, IV

Refer also to AMDI for the consumable materials required to comply with the AMP DM referenced in the accomplishment instructions.

A.3 LOGISTIC MATRIX

In order to apply this Service Bulletin, the following Logistic P/N can be ordered in accordance with the applicable notes:

LOGISTIC P/N	Q.TY (PER HELO)	NOTE	PART
189-381L1	1		I
A180A016E22	AR	(6)	
189-381L2	1		II
A180A016E22	AR	(6)	
189-381L3	1		III
A180A016E22	AR	(6)	
189-381L4	1		IV
A180A016E22	AR	(6)	
189-381L5	1		V

NOTES

- (1) This item can also be obtained reworking raw material "A4 CS26 black and yellow" P/N 3G1120A17351 (Ref. Figure 23 thru 28). Qty. 6 of "A4 CS26 black and yellow" P/N 3G1120A17351 is necessary to obtain all of the decal.
- (2) This item can also be obtained reworking raw material "A4 CS26 black and yellow 3M-DI-NOC" P/N 3G1130A27451 (Ref. Figure 28). Qty. 1 of "A4 CS26 black and

- yellow 3M-DI-NOC” P/N 3G1130A27451 is necessary to obtain all of the decal.
- (3) Applicable to helicopters equipped with “kit bubble window” P/N 8G5620F00111 or P/N 8G5620F00112.
 - (4) Applicable to helicopters equipped with “4TH row external strap retromod” P/N 8G5620P00811.
 - (5) The “decal CS26 pull strap” P/N 3G1130A27152 will be provided. As alternative, the pull strap CS26 P/N 3G5211A14431, the “pull strap CS26 side wall” P/N 3G5211A14432 and the “pull strap CS26 REF A487A001A” P/N 8G5212A23731 could be requested.
 - (6) This item shall be ordered ONLY if it is necessary to reposition the decal P/N A180A016E21 or A180A016E22 (Ref. Figures 1 thru 5 or Figures 7 thru 11 or Figures 13 thru 18 or Figure 20 or Figure 21).
 - (7) Item to be procured as local supply.

B. SPECIAL TOOLS

The following special tools, or equivalent, are necessary to accomplish this Service Bulletin:

#	P/N	DESCRIPTION	Q.TY	NOTE	PART
77	Commercial	Needle	1	(B1)	I, II, III, IV

Refer to ITEP for the special tools required to comply with the AMP DM referenced in the accomplishment instructions.

SPECIAL TOOLS NOTES

(B1) Item to be procured as local supply.

C. INDUSTRY SUPPORT INFORMATION

Customization.

3. ACCOMPLISHMENT INSTRUCTIONS

GENERAL NOTES

- a) Place an identification tag on all components that are re-usable, including the attaching hardware that has been removed to gain access to the modification area and adequately protect them until their later re-use.
- b) Let adhesive cure at room temperature for at least 24 hours unless otherwise specified.
- c) All lengths are in mm.

PART I

1. In accordance with AMP DM 89-A-00-20-00-00A-120A-A, prepare the helicopter on ground for a safe maintenance. Disconnect the battery, all electrical power sources and/or the external power supply.
2. In accordance with AMP DM 89-A-11-00-01-00A-720A-A and with reference to Figure 1 Detail A, install the decal P/N 8G1120A24951 on the LH or RH cockpit door window frame.

NOTE

Make sure that decal P/N 3G1130A27153 can be installed entirely on windows without overlapping the gasket. If necessary to properly install the decal P/N 3G1130A27151, with reference to Figure 1 Detail A, it is allowed to reposition the decal "Push Here" (refer to AMP DM 89-A-11-00-01-00A-520A-A to remove the decal and to AMP DM 89-A-11-00-01-00A-720A-A to reinstall the decal).

3. In accordance with AMP DM 89-A-11-00-01-00A-720A-A and with reference to Figure 1 Detail A, install the decal P/N 8G1120A24851 and the decal P/N 3G1130A27153 on the LH or RH cockpit door window.

NOTE

The following steps 4 and 5 are NOT applicable to helicopters equipped with "kit bubble window" P/N 8G5620F00111 or P/N 8G5620F00112.

4. In accordance with AMP DM 89-A-11-00-01-00A-720A-A and with reference to Figure 1 Detail B, install the decal P/N 8G1120A24951 on the LH or RH forward cabin window frame.

NOTE

Make sure that decal P/N 3G1130A27153 can be installed entirely on windows without overlapping the gasket. If necessary to properly install the decal P/N 3G1130A27151, with reference to Figure 1 Detail B, it is allowed to reposition the decal "Push Here" (refer to AMP DM 89-A-11-00-01-00A-520A-A to remove the decal and to AMP DM 89-A-11-00-01-00A-720A-A to reinstall the decal).

5. In accordance with AMP DM 89-A-11-00-01-00A-720A-A and with reference to Figure 1 Detail B, install the decal P/N 8G1120A24851 and n°2 decals P/N 3G1130A27153 on the LH or RH forward cabin window.

NOTE

The following steps 6 and 7 are ONLY applicable to helicopters equipped with "kit bubble window" P/N 8G5620F00111 or P/N 8G5620F00112.

6. In accordance with AMP DM 89-A-11-00-01-00A-720A-A and with reference to Figure 19 Detail A, install the decal P/N 8G1120A25251 or the decal P/N 8G1120A25351 on the LH or RH forward cabin window.
7. In accordance with AMP DM 89-A-11-00-01-00A-720A-A and with reference to Figure 19 Detail A, install the decal P/N 8G1100A00851 on the release handle of the LH or RH forward cabin window.
8. In accordance with AMP DM 89-A-11-00-01-00A-720A-A and with reference to Figure 2 Detail C, install n°2 decals P/N 8G1120A24951 on the LH or RH cabin sliding door window frame.

NOTE

Make sure that decal P/N 3G1130A27153 can be installed entirely on windows without overlapping the gasket. If necessary to properly install the decal P/N 3G1130A27151, with reference to Figure 2 Detail C, it is allowed to reposition the decal “Push Here” (refer to AMP DM 89-A-11-00-01-00A-520A-A to remove the decal and to AMP DM 89-A-11-00-01-00A-720A-A to reinstall the decal).

9. In accordance with AMP DM 89-A-11-00-01-00A-720A-A and with reference to Figure 2 Detail C, install n°2 decals P/N 8G1120A24851 and n°3 decals P/N 3G1130A27153 on the LH or RH cabin sliding door windows.

NOTE

The following steps 10 and 11 are NOT applicable to helicopters equipped with “4TH row external strap retromod” P/N 8G5620P00811.

10. In accordance with AMP DM 89-A-11-00-01-00A-720A-A and with reference to Figure 2 Detail D, install the decal P/N 8G1120A24951 on the LH or RH aft cabin window frame.

NOTE

Make sure that decal P/N 3G1130A27153 can be installed entirely on windows without overlapping the gasket. If necessary to properly install the decal P/N 3G1130A27151, with reference to Figure 2 Detail D, it is allowed to reposition the decal “Push Here” (refer to AMP DM 89-A-11-00-01-00A-520A-A to remove the decal and to AMP DM 89-A-11-00-01-00A-720A-A to reinstall the decal).

11. In accordance with AMP DM 89-A-11-00-01-00A-720A-A and with reference to Figure 2 Detail D, install the decal P/N 8G1120A24851 and the decal P/N 3G1130A27153 on the LH or RH aft cabin window.

NOTE

The following steps 12 thru 16 are ONLY applicable to helicopters equipped with “4TH row external strap retromod” P/N 8G5620P00811.

NOTE

Perform the following step 12 ONLY if the “decal CS26 pull strap” P/N 3G1130A27152 has been provided.

NOTE

All sewing must be done in accordance with the specification ASTM D6193 type 301, from 6 to 8 stitches every 25 mm (Ref. Figure 29).

NOTE

Make sure to install the “decal CS26 pull strap” P/N 3G1130A27152 on the visible side of the strap assembly.

CAUTION

Do NOT pull the strap assembly during the sewing operation.

12. With reference to Figure 21 Detail A and Figure 29, sew the “decal CS26 pull strap” P/N 3G1130A27152
13. by means of synthetic commercial yarn (colour red, n°31136 per FED-STD-595) on the strap assembly P/N A487A005A.

NOTE

Perform the following steps 14 and 15 ONLY if the “pull strap CS26 side wall” P/N 3G5211A14432 has been provided instead of the “decal CS26 pull strap” P/N 3G1130A27152.

NOTE

To install the “pull strap CS26 side wall” P/N 3G5211A14432 it is necessary ONLY to remove and install the filler wedge. It is MANDATORY the filler wedge replacement.

14. In accordance with the applicable steps of AMP DM 89-A-56-21-03-00A-920A-A or 89-A-56-21-04-00A-920A-A and with reference to Figure 21 Detail A, from the LH or RH aft cabin window, remove the strap assembly P/N A487A005A or any other different basic version.
15. In accordance with the applicable steps of AMP DM 89-A-56-21-03-00A-920A-A or 89-A-56-21-04-00A-920A-A and with reference to Figure 21 Detail A, install the “pull strap CS26 side wall” P/N 3G5211A14432 on the LH or RH aft cabin window.

NOTE

Make sure that decal P/N 3G1130A27153 can be installed entirely on windows without overlapping the gasket. If necessary to properly install the decal P/N 3G1130A27151, with reference to Figure 21 Detail A, it is allowed to reposition the decal “Push Here” (refer to AMP DM 89-A-11-00-01-00A-520A-A to remove the decal and to AMP DM 89-A-11-00-01-00A-720A-A to reinstall the decal).

16. In accordance with AMP DM 89-A-11-00-01-00A-720A-A and with reference to Figure 21 Detail A, install the decal P/N 3G1130A27153 on the LH or RH aft cabin window.

NOTE

Make sure that decal P/N 3G1130A27153 can be installed entirely on windows without overlapping the gasket. If necessary to properly install the decal P/N 3G1130A27151, with reference to Figure 3 Detail E, it is allowed to reposition the decal “Push Here” (refer to AMP DM 89-A-11-00-01-00A-520A-A to remove the decal and to AMP DM 89-A-11-00-01-00A-720A-A to reinstall the decal).

17. In accordance with AMP DM 89-A-11-00-01-00A-720A-A and with reference to Figure 3 Detail E, install the decal P/N 8G1130A53851 and the decal P/N 3G1130A27153 on the LH or RH cockpit door window.

NOTE

The following step 18 are NOT applicable to helicopters equipped with “kit bubble window” P/N 8G5620F00111 or P/N 8G5620F00112.

NOTE

Make sure that decal P/N 3G1130A27153 can be installed entirely on windows without overlapping the gasket. If necessary to properly install the decal P/N 3G1130A27151, with reference to Figure 3 Detail F, it is allowed to reposition the decal “Push Here” (refer to AMP DM 89-A-11-00-01-00A-520A-A to remove the decal and to AMP DM 89-A-11-00-01-00A-720A-A to reinstall the decal).

18. In accordance with AMP DM 89-A-11-00-01-00A-720A-A and with reference to Figure 3 Detail F, install the decal P/N 8G1130A53851 and n°2 decals P/N 3G1130A27153 on the LH or RH forward cabin window.

NOTE

The following steps 19 and 20 are ONLY applicable to helicopters equipped with “kit bubble window” P/N 8G5620F00111 or P/N 8G5620F00112.

NOTE

Make sure that decal P/N 3G1130A27153 can be installed entirely on windows without overlapping the gasket. If necessary to properly install the decal P/N 3G1130A27151, with reference to Figure 20 Detail B, it is allowed to reposition the decal “Push Here” (refer to AMP DM 89-A-11-00-01-00A-520A-A to remove the decal and to AMP DM 89-A-11-00-01-00A-720A-A to reinstall the decal).

19. In accordance with AMP DM 89-A-11-00-01-00A-720A-A and with reference to Figure 20 Detail B, install n°2 decals P/N 3G1130A27153 on the LH or RH forward cabin window.
20. In accordance with AMP DM 89-A-11-00-01-00A-720A-A and with reference to Figure 20 Detail B, install the decal P/N 8G1100A00851 on the release handle of the LH or RH forward cabin window.

NOTE

Make sure that decal P/N 3G1130A27153 can be installed entirely on windows without overlapping the gasket. If necessary to properly install the decal P/N 3G1130A27151, with reference to Figure 4 Detail G, it is allowed to reposition the decal “Push Here” (refer to AMP DM 89-A-11-00-01-00A-520A-A to remove the decal and to AMP DM 89-A-11-00-01-00A-720A-A to reinstall the decal).

21. In accordance with AMP DM 89-A-11-00-01-00A-720A-A and with reference to Figure 4 Detail G, install n°2 decals P/N 8G1130A53851 and n°3 decals P/N 3G1130A27153 on the LH or RH cabin sliding door windows.

NOTE

Make sure that decal P/N 3G1130A27153 can be installed entirely on windows without overlapping the gasket. If necessary to properly install the decal P/N 3G1130A27151, with reference to Figure 4 Detail H, it is allowed to reposition the decal “Push Here” (refer to AMP DM 89-A-11-00-01-00A-520A-A to remove the decal and to AMP DM 89-A-11-00-01-00A-720A-A to reinstall the decal).

22. In accordance with AMP DM 89-A-11-00-01-00A-720A-A and with reference to Figure 4 Detail H, install the decal P/N 8G1130A53851 and the decal P/N 3G1130A27153 on the LH or RH aft cabin window.
23. Repeat steps 2 thru 22 for the other side of the helicopter.
24. Return the helicopter to flight configuration and record for compliance with Part I of this Service Bulletin on the helicopter logbook.
25. Gain access to My Communications section on Leonardo WebPortal and compile the “Service Bulletin Application Communication”.

As an alternative, send the attached compliance form to the following mail box:

engineering.support.lhd@leonardo.com

and (for North, Central and South America) also to:

AWPC.Engineering.Support@leonardocompany.us

PART II

1. In accordance with AMP DM 89-A-00-20-00-00A-120A-A, prepare the helicopter on ground for a safe maintenance. Disconnect the battery, all electrical power sources and/or the external power supply.
2. In accordance with AMP DM 89-A-11-00-01-00A-720A-A and with reference to Figure 5 Detail J, install the decal P/N 8G1120A24951 on the LH or RH cockpit door window frame.

NOTE

Make sure that decal P/N 3G1130A27153 can be installed entirely on windows without overlapping the gasket. If necessary to properly install the decal P/N 3G1130A27151, with reference to Figure 5 Detail J, it is allowed to reposition the decal "Push Here" (refer to AMP DM 89-A-11-00-01-00A-520A-A to remove the decal and to AMP DM 89-A-11-00-01-00A-720A-A to reinstall the decal).

3. In accordance with AMP DM 89-A-11-00-01-00A-720A-A and with reference to Figure 5 Detail J, install the decal P/N 8G1120A24851 and the decal P/N 3G1130A27153 on the LH or RH cockpit door window.

NOTE

The following steps 4 and 5 are NOT applicable to helicopters equipped with "kit bubble window" P/N 8G5620F00111 or P/N 8G5620F00112.

4. In accordance with AMP DM 89-A-11-00-01-00A-720A-A and with reference to Figure 5 Detail K, install the decal P/N 8G1120A24951 on the LH or RH forward cabin window frame.

NOTE

Make sure that decal P/N 3G1130A27153 can be installed entirely on windows without overlapping the gasket. If necessary to properly install the decal P/N 3G1130A27151, with reference to Figure 5 Detail K, it is allowed to reposition the decal "Push Here" (refer to AMP DM 89-A-11-00-01-00A-520A-A to remove the decal and to AMP DM 89-A-11-00-01-00A-720A-A to reinstall the decal).

5. In accordance with AMP DM 89-A-11-00-01-00A-720A-A and with reference to Figure 5 Detail K, install the decal P/N 8G1120A24851 and n°2 decals P/N 3G1130A27153 on the LH or RH forward cabin window.

NOTE

The following steps 6 and 7 are ONLY applicable to helicopters equipped with “kit bubble window” P/N 8G5620F00111 or P/N 8G5620F00112.

6. In accordance with AMP DM 89-A-11-00-01-00A-720A-A and with reference to Figure 19 Detail A, install the decal P/N 8G1120A25251 or the decal P/N 8G1120A25351 on the LH or RH forward cabin window.
7. In accordance with AMP DM 89-A-11-00-01-00A-720A-A and with reference to Figure 19 Detail A, install the decal P/N 8G1100A00851 on the release handle of the LH or RH forward cabin window.
8. In accordance with AMP DM 89-A-11-00-01-00A-720A-A and with reference to Figure 6 Detail L, install the decal P/N 8G1120A24951 on the LH or RH hinged cabin door window frame.

NOTE

Make sure that decal P/N 3G1130A27153 can be installed entirely on windows without overlapping the gasket. If necessary to properly install the decal P/N 3G1130A27151, with reference to Figure 6 Detail L, it is allowed to reposition the decal “Push Here” (refer to AMP DM 89-A-11-00-01-00A-520A-A to remove the decal and to AMP DM 89-A-11-00-01-00A-720A-A to reinstall the decal).

9. In accordance with AMP DM 89-A-11-00-01-00A-720A-A and with reference to Figure 6 Detail L, install the decal P/N 8G1120A24851 and the decal P/N 3G1130A27153 on the LH or RH hinged cabin door window.
10. In accordance with AMP DM 89-A-11-00-01-00A-720A-A and with reference to Figure 6 Detail L, install the decal P/N 8G1120A24951 on the LH or RH central cabin window frame.

NOTE

Make sure that decal P/N 3G1130A27153 can be installed entirely on windows without overlapping the gasket. If necessary to properly install the decal P/N 3G1130A27151, with reference to Figure 6 Detail L, it is allowed to reposition the decal “Push Here” (refer to AMP DM 89-A-11-00-01-00A-520A-A to remove the decal and to AMP DM 89-A-11-00-01-00A-720A-A to reinstall the decal).

11. In accordance with AMP DM 89-A-11-00-01-00A-720A-A and with reference to Figure 6 Detail L, install the decal P/N 8G1120A24851 and n°2 decals P/N 3G1130A27153 on the LH or RH central cabin window.

NOTE

The following steps 12 and 13 are NOT applicable to helicopters equipped with “4TH row external strap retromod” P/N 8G5620P00811.

12. In accordance with AMP DM 89-A-11-00-01-00A-720A-A and with reference to Figure 6 Detail M, install the decal P/N 8G1120A24951 on the LH or RH aft cabin window frame.

NOTE

Make sure that decal P/N 3G1130A27153 can be installed entirely on windows without overlapping the gasket. If necessary to properly install the decal P/N 3G1130A27151, with reference to Figure 6 Detail M, it is allowed to reposition the decal “Push Here” (refer to AMP DM 89-A-11-00-01-00A-520A-A to remove the decal and to AMP DM 89-A-11-00-01-00A-720A-A to reinstall the decal).

13. In accordance with AMP DM 89-A-11-00-01-00A-720A-A and with reference to Figure 6 Detail M, install the decal P/N 8G1120A24851 and n°2 decals P/N 3G1130A27153 on the LH or RH aft cabin window.

NOTE

The following steps 14 thru 17 are ONLY applicable to helicopters equipped with “4TH row external strap retromod” P/N 8G5620P00811.

NOTE

Perform the following step 14 ONLY if the “decal CS26 pull strap” P/N 3G1130A27152 has been provided.

NOTE

All sewing must be done in accordance with the specification ASTM D6193 type 301, from 6 to 8 stitches every 25 mm (Ref. Figure 29).

NOTE

Make sure to install the “decal CS26 pull strap” P/N 3G1130A27152 on the visible side of the strap assembly.

CAUTION

Do NOT pull the strap assembly during the sewing operation.

14. With reference to Figure 21 Detail A and Figure 29, sew the “decal CS26 pull strap” P/N 3G1130A27152 by means of synthetic commercial yarn (colour red, n°31136 per FED-STD-595) on the strap assembly P/N A487A005A.

NOTE

Perform the following steps 15 and 16 ONLY if the “pull strap CS26 side wall” P/N 3G5211A14432 has been provided instead of the “decal CS26 pull strap” P/N 3G1130A27152.

NOTE

To install the “pull strap CS26 side wall” P/N 3G5211A14432 it is necessary ONLY to remove and install the filler wedge. It is MANDATORY the filler wedge replacement.

15. In accordance with the applicable steps of AMP DM 89-A-56-21-03-00A-920A-A or 89-A-56-21-04-00A-920A-A and with reference to Figure 21 Detail A, from the LH or RH aft cabin window, remove the strap assembly P/N A487A005A or any other different basic version.
16. In accordance with the applicable steps of AMP DM 89-A-56-21-03-00A-920A-A or 89-A-56-21-04-00A-920A-A and with reference to Figure 21 Detail A, install the “pull strap CS26 side wall” P/N 3G5211A14432 on the LH or RH aft cabin window.

NOTE

Make sure that decal P/N 3G1130A27153 can be installed entirely on windows without overlapping the gasket. If necessary to properly install the decal P/N 3G1130A27151, with reference to Figure 21 Detail A, it is allowed to reposition the decal “Push Here” (refer to AMP DM 89-A-11-00-01-00A-520A-A to remove the decal and to AMP DM 89-A-11-00-01-00A-720A-A to reinstall the decal).

17. In accordance with AMP DM 89-A-11-00-01-00A-720A-A and with reference to Figure 21 Detail A, install the decal P/N 3G1130A27153 on the LH or RH aft cabin window.

NOTE

Make sure that decal P/N 3G1130A27153 can be installed entirely on windows without overlapping the gasket. If necessary to properly install the decal P/N 3G1130A27151, with reference to Figure 8 Detail P, it is allowed to reposition the decal “Push Here” (refer to AMP DM 89-A-11-00-01-00A-520A-A to remove the decal and to AMP DM 89-A-11-00-01-00A-720A-A to reinstall the decal).

18. In accordance with AMP DM 89-A-11-00-01-00A-720A-A and with reference to Figure 8 Detail P, install the decal P/N 8G1130A53851 and the decal P/N 3G1130A27153 on the LH or RH cockpit door window.

NOTE

The following step 19 are NOT applicable to helicopters equipped with “kit bubble window” P/N 8G5620F00111 or P/N 8G5620F00112.

NOTE

Make sure that decal P/N 3G1130A27153 can be installed entirely on windows without overlapping the gasket. If necessary to properly install the decal P/N 3G1130A27151, with reference to Figure 8 Detail Q, it is allowed to reposition the decal “Push Here” (refer to AMP DM 89-A-11-00-01-00A-520A-A to remove the decal and to AMP DM 89-A-11-00-01-00A-720A-A to reinstall the decal).

19. In accordance with AMP DM 89-A-11-00-01-00A-720A-A and with reference to Figure 8 Detail Q, install the decal P/N 8G1130A53851 and n°2 decals P/N 3G1130A27153 on the LH or RH forward cabin window.

NOTE

The following steps 20 and 21 are ONLY applicable to helicopters equipped with “kit bubble window” P/N 8G5620F00111 or P/N 8G5620F00112.

NOTE

Make sure that decal P/N 3G1130A27153 can be installed entirely on windows without overlapping the gasket. If necessary to properly install the decal P/N 3G1130A27151, with reference to Figure 20 Detail B, it is allowed to reposition the decal “Push Here” (refer to AMP DM 89-A-11-00-01-00A-520A-A to remove the decal and to AMP DM 89-A-11-00-01-00A-720A-A to reinstall the decal).

20. In accordance with AMP DM 89-A-11-00-01-00A-720A-A and with reference to Figure 20 Detail B, install n°2 decals P/N 3G1130A27153 on the LH or RH forward cabin window.
21. In accordance with AMP DM 89-A-11-00-01-00A-720A-A and with reference to Figure 20 Detail B, install the decal P/N 8G1100A00851 on the release handle of the LH or RH forward cabin window.

NOTE

Make sure that decal P/N 3G1130A27153 can be installed entirely on windows without overlapping the gasket. If necessary to properly install the decal P/N 3G1130A27151, with reference to Figure 9 Detail R, it is allowed to reposition the decal “Push Here” (refer to AMP DM 89-A-11-00-01-00A-520A-A to remove the decal and to AMP DM 89-A-11-00-01-00A-720A-A to reinstall the decal).

22. In accordance with AMP DM 89-A-11-00-01-00A-720A-A and with reference to Figure 9 Detail R, install the decal P/N 8G1130A53851 and the decal P/N 3G1130A27153 on the LH or RH hinged cabin door window.

NOTE

Make sure that decal P/N 3G1130A27153 can be installed entirely on windows without overlapping the gasket. If necessary to properly install the decal P/N 3G1130A27151, with reference to Figure 9 Detail R, it is allowed to reposition the decal “Push Here” (refer to AMP DM 89-A-11-00-01-00A-520A-A to remove the decal and to AMP DM 89-A-11-00-01-00A-720A-A to reinstall the decal).

23. In accordance with AMP DM 89-A-11-00-01-00A-720A-A and with reference to Figure 9 Detail R, install the decal P/N 8G1130A53851 and n°2 decals P/N 3G1130A27153 on the LH or RH central cabin window.

NOTE

Make sure that decal P/N 3G1130A27153 can be installed entirely on windows without overlapping the gasket. If necessary to properly install the decal P/N 3G1130A27151, with reference to Figure 9 Detail S, it is allowed to reposition the decal “Push Here” (refer to AMP DM 89-A-11-00-01-00A-520A-A to remove the decal and to AMP DM 89-A-11-00-01-00A-720A-A to reinstall the decal).

24. In accordance with AMP DM 89-A-11-00-01-00A-720A-A and with reference to Figure 9 Detail S, install the decal P/N 8G1130A53851 and the decal P/N 3G1130A27153 on the LH or RH aft cabin window.
25. Repeat steps 2 thru 24 for the other side of the helicopter.
26. Return the helicopter to flight configuration and record for compliance with Part II of this Service Bulletin on the helicopter logbook.
27. Gain access to My Communications section on Leonardo WebPortal and compile the “Service Bulletin Application Communication”.

As an alternative, send the attached compliance form to the following mail box:

engineering.support.lhd@leonardo.com

and (for North, Central and South America) also to:

AWPC.Engineering.Support@leonardocompany.us

PART III

1. In accordance with AMP DM 89-A-00-20-00-00A-120A-A, prepare the helicopter on ground for a safe maintenance. Disconnect the battery, all electrical power sources and/or the external power supply.
2. In accordance with AMP DM 89-A-11-00-01-00A-720A-A and with reference to Figure 10 Detail T, install the decal P/N 8G1120A24951 on the LH or RH cockpit door window frame.

NOTE

Make sure that decal P/N 3G1130A27153 can be installed entirely on windows without overlapping the gasket. If necessary to properly install the decal P/N 3G1130A27151, with reference to Figure 10 Detail T, it is allowed to reposition the decal "Push Here" (refer to AMP DM 89-A-11-00-01-00A-520A-A to remove the decal and to AMP DM 89-A-11-00-01-00A-720A-A to reinstall the decal).

3. In accordance with AMP DM 89-A-11-00-01-00A-720A-A and with reference to Figure 10 Detail T, install the decal P/N 8G1120A24851 and the decal P/N 3G1130A27153 on the LH or RH cockpit door window.

NOTE

The following steps 4 and 5 are NOT applicable to helicopters equipped with "kit bubble window" P/N 8G5620F00111 or P/N 8G5620F00112.

4. In accordance with AMP DM 89-A-11-00-01-00A-720A-A and with reference to Figure 10 Detail U, install the decal P/N 8G1120A24951 on the LH or RH forward cabin window frame.

NOTE

Make sure that decal P/N 3G1130A27153 can be installed entirely on windows without overlapping the gasket. If necessary to properly install the decal P/N 3G1130A27151, with reference to Figure 10 Detail U, it is allowed to reposition the decal "Push Here" (refer to AMP DM 89-A-11-00-01-00A-520A-A to remove the decal and to AMP DM 89-A-11-00-01-00A-720A-A to reinstall the decal).

5. In accordance with AMP DM 89-A-11-00-01-00A-720A-A and with reference to Figure 10 Detail U, install the decal P/N 8G1120A24851 and n°2 decals P/N 3G1130A27153 on the LH or RH forward cabin window.

NOTE

The following steps 6 and 7 are ONLY applicable to helicopters equipped with “kit bubble window” P/N 8G5620F00111 or P/N 8G5620F00112.

6. In accordance with AMP DM 89-A-11-00-01-00A-720A-A and with reference to Figure 19 Detail A, install the decal P/N 8G1120A25251 or the decal P/N 8G1120A25351 on the LH or RH forward cabin window.
7. In accordance with AMP DM 89-A-11-00-01-00A-720A-A and with reference to Figure 19 Detail A, install the decal P/N 8G1100A00851 on the release handle of the LH or RH forward cabin window.
8. In accordance with AMP DM 89-A-11-00-01-00A-720A-A and with reference to Figure 11 Detail V, install the decal P/N 8G1120A24951 on the LH or RH hinged cabin door window frame.

NOTE

Make sure that decal P/N 3G1130A27153 can be installed entirely on windows without overlapping the gasket. If necessary to properly install the decal P/N 3G1130A27151, with reference to Figure 11 Detail V, it is allowed to reposition the decal “Push Here” (refer to AMP DM 89-A-11-00-01-00A-520A-A to remove the decal and to AMP DM 89-A-11-00-01-00A-720A-A to reinstall the decal).

9. In accordance with AMP DM 89-A-11-00-01-00A-720A-A and with reference to Figure 11 Detail V, install the decal P/N 8G1120A24851 and n°2 decals P/N 3G1130A27153 on the LH or RH hinged cabin door window.
10. In accordance with AMP DM 89-A-11-00-01-00A-720A-A and with reference to Figure 11 Detail V, install the decal P/N 8G1120A24951 on the LH or RH central cabin window frame.

NOTE

Make sure that decal P/N 3G1130A27153 can be installed entirely on windows without overlapping the gasket. If necessary to properly install the decal P/N 3G1130A27151, with reference to Figure 11 Detail V, it is allowed to reposition the decal “Push Here” (refer to AMP DM 89-A-11-00-01-00A-520A-A to remove the decal and to AMP DM 89-A-11-00-01-00A-720A-A to reinstall the decal).

11. In accordance with AMP DM 89-A-11-00-01-00A-720A-A and with reference to Figure 11 Detail V, install the decal P/N 8G1120A24851 and the decal P/N 3G1130A27153 on the LH or RH central cabin window.

NOTE

The following steps 12 and 13 are NOT applicable to helicopters equipped with “4TH row external strap retromod” P/N 8G5620P00811.

12. In accordance with AMP DM 89-A-11-00-01-00A-720A-A and with reference to Figure 11 Detail W, install the decal P/N 8G1120A24951 on the LH or RH aft cabin window frame.

NOTE

Make sure that decal P/N 3G1130A27153 can be installed entirely on windows without overlapping the gasket. If necessary to properly install the decal P/N 3G1130A27151, with reference to Figure 11 Detail W, it is allowed to reposition the decal “Push Here” (refer to AMP DM 89-A-11-00-01-00A-520A-A to remove the decal and to AMP DM 89-A-11-00-01-00A-720A-A to reinstall the decal).

13. In accordance with AMP DM 89-A-11-00-01-00A-720A-A and with reference to Figure 11 Detail W, install the decal P/N 8G1120A24851 and the decal P/N 3G1130A27153 on the LH or RH aft cabin window.

NOTE

The following steps 14 thru 17 are ONLY applicable to helicopters equipped with “4TH row external strap retromod” P/N 8G5620P00811.

NOTE

Perform the following step 14 ONLY if the “decal CS26 pull strap” P/N 3G1130A27152 has been provided.

NOTE

All sewing must be done in accordance with the specification ASTM D6193 type 301, from 6 to 8 stitches every 25 mm (Ref. Figure 29).

NOTE

Make sure to install the “decal CS26 pull strap” P/N 3G1130A27152 on the visible side of the strap assembly.

CAUTION

Do NOT pull the strap assembly during the sewing operation.

14. With reference to Figure 21 Detail A and Figure 29, sew the “decal CS26 pull strap” P/N 3G1130A27152 by means of synthetic commercial yarn (colour red, n°31136 per FED-STD-595) on the strap assembly P/N A487A005A.

NOTE

Perform the following steps 15 and 16 ONLY if the “pull strap CS26 side wall” P/N 3G5211A14432 has been provided instead of the “decal CS26 pull strap” P/N 3G1130A27152.

NOTE

To install the “pull strap CS26 side wall” P/N 3G5211A14432 it is necessary ONLY to remove and install the filler wedge. It is MANDATORY the filler wedge replacement.

15. In accordance with the applicable steps of AMP DM 89-A-56-21-03-00A-920A-A or 89-A-56-21-04-00A-920A-A and with reference to Figure 21 Detail A, from the LH or RH aft cabin window, remove the strap assembly P/N A487A005A or any other different basic version.
16. In accordance with the applicable steps of AMP DM 89-A-56-21-03-00A-920A-A or 89-A-56-21-04-00A-920A-A and with reference to Figure 21 Detail A, install the “pull strap CS26 side wall” P/N 3G5211A14432 on the LH or RH aft cabin window.

NOTE

Make sure that decal P/N 3G1130A27153 can be installed entirely on windows without overlapping the gasket. If necessary to properly install the decal P/N 3G1130A27151, with reference to Figure 21 Detail A, it is allowed to reposition the decal “Push Here” (refer to AMP DM 89-A-11-00-01-00A-520A-A to remove the decal and to AMP DM 89-A-11-00-01-00A-720A-A to reinstall the decal).

17. In accordance with AMP DM 89-A-11-00-01-00A-720A-A and with reference to Figure 21 Detail A, install the decal P/N 3G1130A27153 on the LH or RH aft cabin window.

NOTE

Make sure that decal P/N 3G1130A27153 can be installed entirely on windows without overlapping the gasket. If necessary to properly install the decal P/N 3G1130A27151, with reference to Figure 13 Detail Y, it is allowed to reposition the decal “Push Here” (refer to AMP DM 89-A-11-00-01-00A-520A-A to remove the decal and to AMP DM 89-A-11-00-01-00A-720A-A to reinstall the decal).

18. In accordance with AMP DM 89-A-11-00-01-00A-720A-A and with reference to Figure 13 Detail Y, install the decal P/N 8G1130A53851 and the decal P/N 3G1130A27153 on the LH or RH cockpit door window.

NOTE

The following step 19 are NOT applicable to helicopters equipped with “kit bubble window” P/N 8G5620F00111 or P/N 8G5620F00112.

NOTE

Make sure that decal P/N 3G1130A27153 can be installed entirely on windows without overlapping the gasket. If necessary to properly install the decal P/N 3G1130A27151, with reference to Figure 13 Detail Z, it is allowed to reposition the decal “Push Here” (refer to AMP DM 89-A-11-00-01-00A-520A-A to remove the decal and to AMP DM 89-A-11-00-01-00A-720A-A to reinstall the decal).

19. In accordance with AMP DM 89-A-11-00-01-00A-720A-A and with reference to Figure 13 Detail Z, install the decal P/N 8G1130A53851 and n°2 decals P/N 3G1130A27153 on the LH or RH forward cabin window.

NOTE

The following steps 20 and 21 are ONLY applicable to helicopters equipped with “kit bubble window” P/N 8G5620F00111 or P/N 8G5620F00112.

NOTE

Make sure that decal P/N 3G1130A27153 can be installed entirely on windows without overlapping the gasket. If necessary to properly install the decal P/N 3G1130A27151, with reference to Figure 20 Detail B, it is allowed to reposition the decal “Push Here” (refer to AMP DM 89-A-11-00-01-00A-520A-A to remove the decal and to AMP DM 89-A-11-00-01-00A-720A-A to reinstall the decal).

20. In accordance with AMP DM 89-A-11-00-01-00A-720A-A and with reference to Figure 20 Detail B, install n°2 decals P/N 3G1130A27153 on the LH or RH forward cabin window.
21. In accordance with AMP DM 89-A-11-00-01-00A-720A-A and with reference to Figure 20 Detail B, install the decal P/N 8G1100A00851 on the release handle of the LH or RH forward cabin window.

NOTE

Make sure that decal P/N 3G1130A27153 can be installed entirely on windows without overlapping the gasket. If necessary to properly install the decal P/N 3G1130A27151, with reference to Figure 14 Detail AA, it is allowed to reposition the decal “Push Here” (refer to AMP DM 89-A-11-00-01-00A-520A-A to remove the decal and to AMP DM 89-A-11-00-01-00A-720A-A to reinstall the decal).

22. In accordance with AMP DM 89-A-11-00-01-00A-720A-A and with reference to Figure 14 Detail AA, install the decal P/N 8G1130A53851 and n°2 decals P/N 3G1130A27153 on the LH or RH hinged cabin door window.

NOTE

Make sure that decal P/N 3G1130A27153 can be installed entirely on windows without overlapping the gasket. If necessary to properly install the decal P/N 3G1130A27151, with reference to Figure 14 Detail AA, it is allowed to reposition the decal “Push Here” (refer to AMP DM 89-A-11-00-01-00A-520A-A to remove the decal and to AMP DM 89-A-11-00-01-00A-720A-A to reinstall the decal).

23. In accordance with AMP DM 89-A-11-00-01-00A-720A-A and with reference to Figure 14 Detail AA, install the decal P/N 8G1130A53851 and the decal P/N 3G1130A27153 on the LH or RH central cabin window.

NOTE

Make sure that decal P/N 3G1130A27153 can be installed entirely on windows without overlapping the gasket. If necessary to properly install the decal P/N 3G1130A27151, with reference to Figure 14 Detail AB, it is allowed to reposition the decal “Push Here” (refer to AMP DM 89-A-11-00-01-00A-520A-A to remove the decal and to AMP DM 89-A-11-00-01-00A-720A-A to reinstall the decal).

24. In accordance with AMP DM 89-A-11-00-01-00A-720A-A and with reference to Figure 14 Detail AB, install the decal P/N 8G1130A53851 and the decal P/N 3G1130A27153 on the LH or RH aft cabin window.
25. Repeat steps 2 thru 24 for the other side of the helicopter.
26. Return the helicopter to flight configuration and record for compliance with Part III of this Service Bulletin on the helicopter logbook.
27. Gain access to My Communications section on Leonardo WebPortal and compile the “Service Bulletin Application Communication”.

As an alternative, send the attached compliance form to the following mail box:

engineering.support.lhd@leonardo.com

and (for North, Central and South America) also to:

AWPC.Engineering.Support@leonardocompany.us

PART IV

1. In accordance with AMP DM 89-A-00-20-00-00A-120A-A, prepare the helicopter on ground for a safe maintenance. Disconnect the battery, all electrical power sources and/or the external power supply.

NOTE

Perform the following step 2 ONLY if the “decal CS26 pull strap” P/N 3G1130A27152 has been provided.

NOTE

All sewing must be done in accordance with the specification ASTM D6193 type 301, from 6 to 8 stitches every 25 mm (Ref. Figure 29).

NOTE

Make sure to install the “decal CS26 pull strap” P/N 3G1130A27152 on the visible side of the strap assembly.

CAUTION

Do NOT pull the strap assembly during the sewing operation.

2. With reference to Figures 15 Detail A, 17 Detail E and 29, sew n°2 decals CS26 pull strap P/N 3G1130A27152 by means of synthetic commercial yarn (colour red, n°31136 per FED-STD-595) on the two strap assemblies P/N A487A003A.

NOTE

Perform the following steps 3 and 4 ONLY if the pull strap CS26 P/N 3G5211A14431 has been provided instead of the “decal CS26 pull strap” P/N 3G1130A27152.

NOTE

To install the pull strap CS26 P/N 3G5211A14431 it is necessary ONLY to remove and install the filler wedge. It is MANDATORY the filler wedge replacement.

3. In accordance with the applicable steps of AMP DM 89-A-56-31-01-00A-920A-A or 89-A-56-31-02-00A-920A-A and with reference to Figures 15 Detail A and 17 Detail E, from the LH or RH cockpit door window, remove n°2 strap assemblies P/N A487A003A or any other different basic version.

4. In accordance with the applicable steps of AMP DM 89-A-56-31-01-00A-920A-A or 89-A-56-31-02-00A-920A-A and with reference to Figures 15 Detail A and 17 Detail E, install n°2 pull straps CS26 P/N 3G5211A14431 on the LH or RH cockpit door window.

NOTE

Make sure that decal P/N 3G1130A27153 can be installed entirely on windows without overlapping the gasket. If necessary to properly install the decal P/N 3G1130A27151, with reference to Figure 15 Detail A and Figure 17 Detail E, it is allowed to reposition the decal "Push Here" (refer to AMP DM 89-A-11-00-01-00A-520A-A to remove the decal and to AMP DM 89-A-11-00-01-00A-720A-A to reinstall the decal).

5. In accordance with AMP DM 89-A-11-00-01-00A-720A-A and with reference to Figures 15 Detail A and 17 Detail E, install n°2 decals P/N 3G1130A27153 on the LH or RH cockpit door window.

NOTE

The following steps 6 thru 9 are NOT applicable to helicopters equipped with "kit bubble window" P/N 8G5620F00111 or P/N 8G5620F00112.

NOTE

Perform the following step 6 ONLY if the "decal CS26 pull strap" P/N 3G1130A27152 have been provided.

NOTE

All sewing must be done in accordance with the specification ASTM D6193 type 301, from 6 to 8 stitches every 25 mm (Ref. Figure 29).

NOTE

Make sure to install the "decal CS26 pull strap" P/N 3G1130A27152 on the visible side of the strap assembly.

CAUTION

Do NOT pull the strap assembly during the sewing operation.

6. With reference to Figures 15 Detail B, 17 Detail F and 29, sew n°2 decals CS26 pull strap P/N 3G1130A27152 by means of synthetic commercial yarn (colour red, n°31136 per FED-STD-595) on the strap assembly P/N A487A003A and on the “strap assy nylon for emergency window” P/N A487A001A.

NOTE

Perform the following steps 7 and 8 ONLY if the pull strap CS26 P/N 3G5211A14431 and the “pull strap CS26 REF A487A001A” P/N 8G5212A23731 have been provided instead of the “decals CS26 pull strap” P/N 3G1130A27152.

NOTE

To install the pull strap CS26 P/N 3G5211A14431 and the “pull strap CS26 REF A487A001A” P/N 8G5212A23731 it is necessary ONLY to remove and install the filler wedge. It is MANDATORY the filler wedge replacement.

7. In accordance with the applicable steps of AMP DM 89-A-56-21-01-00A-920A-A or 89-A-56-21-02-00A-920A-A and with reference to Figures 15 Detail B and 17 Detail F, from the LH or RH forward cabin window, remove the strap assembly P/N A487A003A and the “strap assy nylon for emergency window” P/N A487A001A or any other different basic version.
8. In accordance with the applicable steps of AMP DM 89-A-56-21-01-00A-920A-A or 89-A-56-21-02-00A-920A-A and with reference to Figures 15 Detail B and 17 Detail F, install the pull strap CS26 P/N 3G5211A14431 and the “pull strap CS26 REF A487A001A” P/N 8G5212A23731 on the LH or RH forward cabin window.

NOTE

Make sure that decal P/N 3G1130A27153 can be installed entirely on windows without overlapping the gasket. If necessary to properly install the decal P/N 3G1130A27151, with reference to Figure 15 Detail B and Figure 17 Detail F, it is allowed to reposition the decal “Push Here” (refer to AMP DM 89-A-11-00-01-00A-520A-A to remove the decal and to AMP DM 89-A-11-00-01-00A-720A-A to reinstall the decal).

9. In accordance with AMP DM 89-A-11-00-01-00A-720A-A and with reference to Figures 15 Detail B and 17 Detail F, install n°4 decals P/N 3G1130A27153 on the LH or RH forward cabin window.

NOTE

The following steps 10 and 12 are ONLY applicable to helicopters equipped with “kit bubble window” P/N 8G5620F00111 or P/N 8G5620F00112.

10. In accordance with AMP DM 89-A-11-00-01-00A-720A-A and with reference to Figure 19 Detail A, install the decal P/N 8G1120A25251 on the external side of the LH forward cabin window or the decal P/N 8G1120A25351 on the external side of the RH forward cabin window.

NOTE

Make sure that decal P/N 3G1130A27153 can be installed entirely on windows without overlapping the gasket. If necessary to properly install the decal P/N 3G1130A27151, with reference to Figure 20 Detail B, it is allowed to reposition the decal “Push Here” (refer to AMP DM 89-A-11-00-01-00A-520A-A to remove the decal and to AMP DM 89-A-11-00-01-00A-720A-A to reinstall the decal).

11. In accordance with AMP DM 89-A-11-00-01-00A-720A-A and with reference to Figure 20 Detail B, install n°2 decals P/N 3G1130A27153 on the internal side of the LH or RH forward cabin window.
12. In accordance with AMP DM 89-A-11-00-01-00A-720A-A and with reference to Figures 19 Detail A and 20 Detail B, install n°2 decals P/N 8G1100A00851 on the release handles of the LH or RH forward cabin window.

NOTE

Perform the following step 13 ONLY if the “decal CS26 pull strap” P/N 3G1130A27152 has been provided.

NOTE

All sewing must be done in accordance with the specification ASTM D6193 type 301, from 6 to 8 stitches every 25 mm (Ref. Figure 29).

NOTE

Make sure to install the “decal CS26 pull strap” P/N 3G1130A27152 on the visible side of the strap assembly.

CAUTION

Do NOT pull the strap assembly during the sewing operation.

13. With reference to Figures 16 Detail C, 18 Detail G and 29, sew n°4 decals CS26 pull strap P/N 3G1130A27152 by means of synthetic commercial yarn (colour red, n°31136 per FED-STD-595) on the four strap assemblies P/N A487A003A.

NOTE

Perform the following steps 14 and 15 ONLY if the pull strap CS26 P/N 3G5211A14431 has been provided instead of the “decal CS26 pull strap” P/N 3G1130A27152.

NOTE

To install the pull strap CS26 P/N 3G5211A14431 it is necessary ONLY to remove and install the filler wedge. It is MANDATORY the filler wedge replacement.

14. In accordance with the applicable steps of AMP DM 89-A-56-32-01-00A-920A-A or 89-A-56-32-02-00A-920A-A and with reference to Figures 16 Detail C and 18 Detail G, from the LH or RH cabin sliding door windows, remove n°4 strap assemblies P/N A487A003A or any other different basic version.
15. In accordance with the applicable steps of AMP DM 89-A-56-32-01-00A-920A-A or 89-A-56-32-02-00A-920A-A and with reference Figures 16 Detail C and 18 Detail G, install n°4 pull straps CS26 P/N 3G5211A14431 on the LH or RH cabin sliding door windows.

NOTE

Make sure that decal P/N 3G1130A27153 can be installed entirely on windows without overlapping the gasket. If necessary to properly install the decal P/N 3G1130A27151, with reference to Figure 16 Detail C and Figure 18 Detail G, it is allowed to reposition the decal “Push Here” (refer to AMP DM 89-A-11-00-01-00A-520A-A to remove the decal and to AMP DM 89-A-11-00-01-00A-720A-A to reinstall the decal).

16. In accordance with AMP DM 89-A-11-00-01-00A-720A-A and with reference to Figures 16 Detail C and 18 Detail G, install n°6 decals P/N 3G1130A27153 on the LH or RH cabin sliding door windows.

NOTE

Perform the following step 17 ONLY if the “decal CS26 pull strap” P/N 3G1130A27152 has been provided.

NOTE

All sewing must be done in accordance with the specification ASTM D6193 type 301, from 6 to 8 stitches every 25 mm (Ref. Figure 29).

NOTE

Make sure to install the “decal CS26 pull strap” P/N 3G1130A27152 on the visible side of the strap assembly.

CAUTION

Do NOT pull the strap assembly during the sewing operation.

17. With reference to Figures 16 Detail D, 18 Detail H and 29, sew n°2 decals CS26 pull strap P/N 3G1130A27152 by means of synthetic commercial yarn (colour red, n°31136 per FED-STD-595) on the strap assembly P/N A487A005A and on the strap assembly P/N A487A003A.

NOTE

Perform the following steps 18 and 19 ONLY if the pull strap CS26 P/N 3G5211A14431 and the “pull strap CS26 side wall” P/N 3G5211A14432 have been provided instead of the “decal CS26 pull strap” P/N 3G1130A27152.

NOTE

To install the pull strap CS26 P/N 3G5211A14431 and the “pull strap CS26 side wall” P/N 3G5211A14432 it is necessary ONLY to remove and install the filler wedge. It is MANDATORY the filler wedge replacement.

18. In accordance with the applicable steps of AMP DM 89-A-56-21-03-00A-920A-A or 89-A-56-21-04-00A-920A-A and with reference to Figures 16 Detail D and 18 Detail H, from the LH or RH aft cabin window, remove the strap assembly P/N A487A003A and the strap assembly P/N A487A005A or any other different basic version.
19. In accordance with the applicable steps of AMP DM 89-A-56-21-03-00A-920A-A or 89-A-56-21-04-00A-920A-A and with reference to Figures 16 Detail D and 18 Detail H, install the “pull strap CS26 side wall” P/N 3G5211A14432 and the pull strap CS26 P/N 3G5211A14431 on the LH or RH aft cabin window.

NOTE

Make sure that decal P/N 3G1130A27153 can be installed entirely on windows without overlapping the gasket. If necessary to properly install the decal P/N 3G1130A27151, with reference to Figure 16 Detail D and Figure 18 Detail H, it is allowed to reposition the decal “Push Here” (refer to AMP DM 89-A-11-00-01-00A-520A-A to remove the decal and to AMP DM 89-A-11-00-01-00A-720A-A to reinstall the decal).

20. In accordance with AMP DM 89-A-11-00-01-00A-720A-A and with reference to Figures 16 Detail D and 18 Detail H, install n°2 decals P/N 3G1130A27153 on the LH or RH aft cabin window.
21. Repeat steps 2 thru 20 for the other side of the helicopter.
22. Return the helicopter to flight configuration and record for compliance with Part IV of this Service Bulletin on the helicopter logbook.
23. Gain access to My Communications section on Leonardo WebPortal and compile the “Service Bulletin Application Communication”.

As an alternative, send the attached compliance form to the following mail box:

engineering.support.lhd@leonardo.com

and (for North, Central and South America) also to:

AWPC.Engineering.Support@leonardocompany.us

PART V

1. In accordance with AMP DM 89-A-00-20-00-00A-120A-A, prepare the helicopter on ground for a safe maintenance. Disconnect the battery, all electrical power sources and/or the external power supply.
2. In accordance with AMP DM 89-A-11-00-01-00A-720A-A and with reference to Figure 22 View A-A, install the decal stripe vertical external LR P/N 8G1120A25451, the decal stripe horizontal LR P/N 8G1120A25551 and the decal stripe vertical internal LR P/N 8G1120A25151 in the indicated positions on the LH or RH front fairing.
3. Repeat step 2 for the other side of the helicopter.
4. Return the helicopter to flight configuration and record for compliance with Part V of this Service Bulletin on the helicopter logbook.
5. Gain access to My Communications section on Leonardo WebPortal and compile the “Service Bulletin Application Communication”.

As an alternative, send the attached compliance form to the following mail box:

engineering.support.lhd@leonardo.com

and (for North, Central and South America) also to:

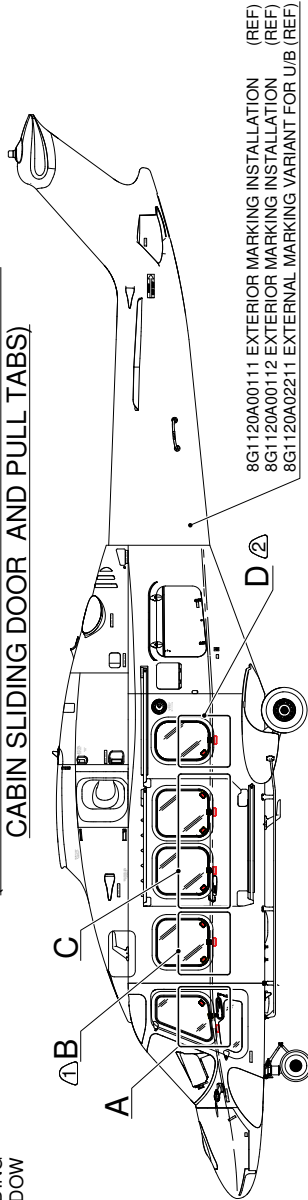
AWPC.Engineering.Support@leonardocompany.us

8G1100A00311

**EXT/INT INSTALLATION
MARK CS26 SLIDE ALL TABS**
(APPLICABLE TO HELICOPTERS EQUIPPED WITH
CABIN SLIDING DOOR AND PULL TABS)

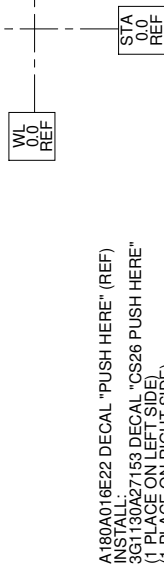
NOTE:
⚠ NOT APPLICABLE TO HELICOPTERS EQUIPPED WITH KIT BUBBLE WINDOW P/N 8G5620F00111 OR P/N 8G5620F00112 (SEE FIGURES 19 AND 20 EXT/INT INSTALLATION MARK CS26 BUBBLE WINDOW P/N 8G1100A00911) OR KIT CABIN SLIDING WINDOW LH P/N 8G5620F00211 OR KIT CABIN SLIDING WINDOW RH P/N 8G5620F00311.

⚠ NOT APPLICABLE TO HELICOPTERS EQUIPPED WITH 4TH ROW EXTERNAL STRAP RETROMOD P/N 8G5620P00811 (SEE FIGURE 21, EXT/INT INSTALLATION MARK CS26 4TH ROW STRAP P/N 8G1100A00711).

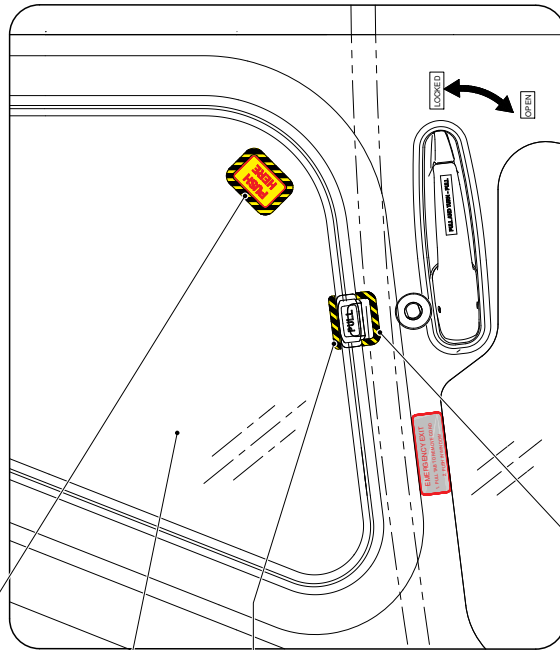


8G1120A00111 EXTERIOR MARKING INSTALLATION (REF)
8G1120A00112 EXTERIOR MARKING INSTALLATION (REF)
8G1120A02211 EXTERIOR MARKING VARIANT FOR U/B (REF)

VIEW LOOKING LEFT SIDE



A180A016E22 DECAL "PUSH HERE" (REF)
INSTALL:
3G1130A27153 DECAL "CS26 PUSH HERE"
(1 PLACE ON LEFT SIDE)
(1 PLACE ON RIGHT SIDE)



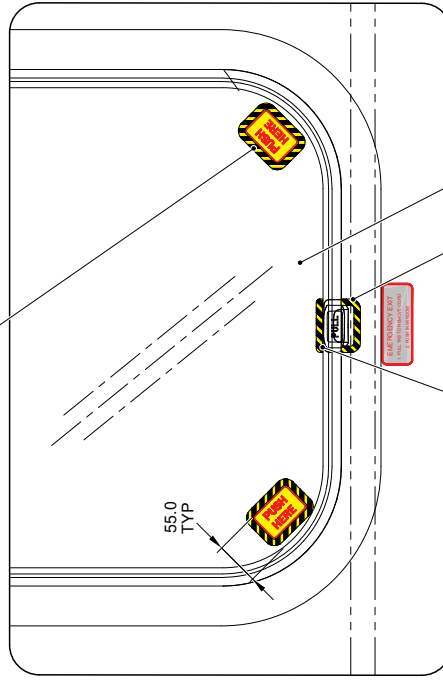
COCKPIT DOOR WINDOW
(REF)

INSTALL:
8G1120A24851 EXT PULL TAB UP
(1 PLACE ON LEFT SIDE)
(1 PLACE ON RIGHT SIDE)

INSTALL:
8G1120A24951 EXT PULL TAB LWR
(1 PLACE ON LEFT SIDE)
(1 PLACE ON RIGHT SIDE)

DETAIL A

(LEFT SIDE SHOWN TYP RIGHT SIDE)
STRUCTURES AND SYSTEMS ARE PARTIALLY
OMITTED FOR BETTER CLARITY PURPOSE



FORWARD CABIN WINDOW
(REF)

INSTALL:
8G1120A24851 EXT PULL TAB UP
(1 PLACE ON LEFT SIDE)
(1 PLACE ON RIGHT SIDE)

INSTALL:
8G1120A24951 EXT PULL TAB LWR
(1 PLACE ON LEFT SIDE)
(1 PLACE ON RIGHT SIDE)

DETAIL B

(LEFT SIDE SHOWN TYP RIGHT SIDE)
STRUCTURES AND SYSTEMS ARE PARTIALLY
OMITTED FOR BETTER CLARITY PURPOSE

Figure 1

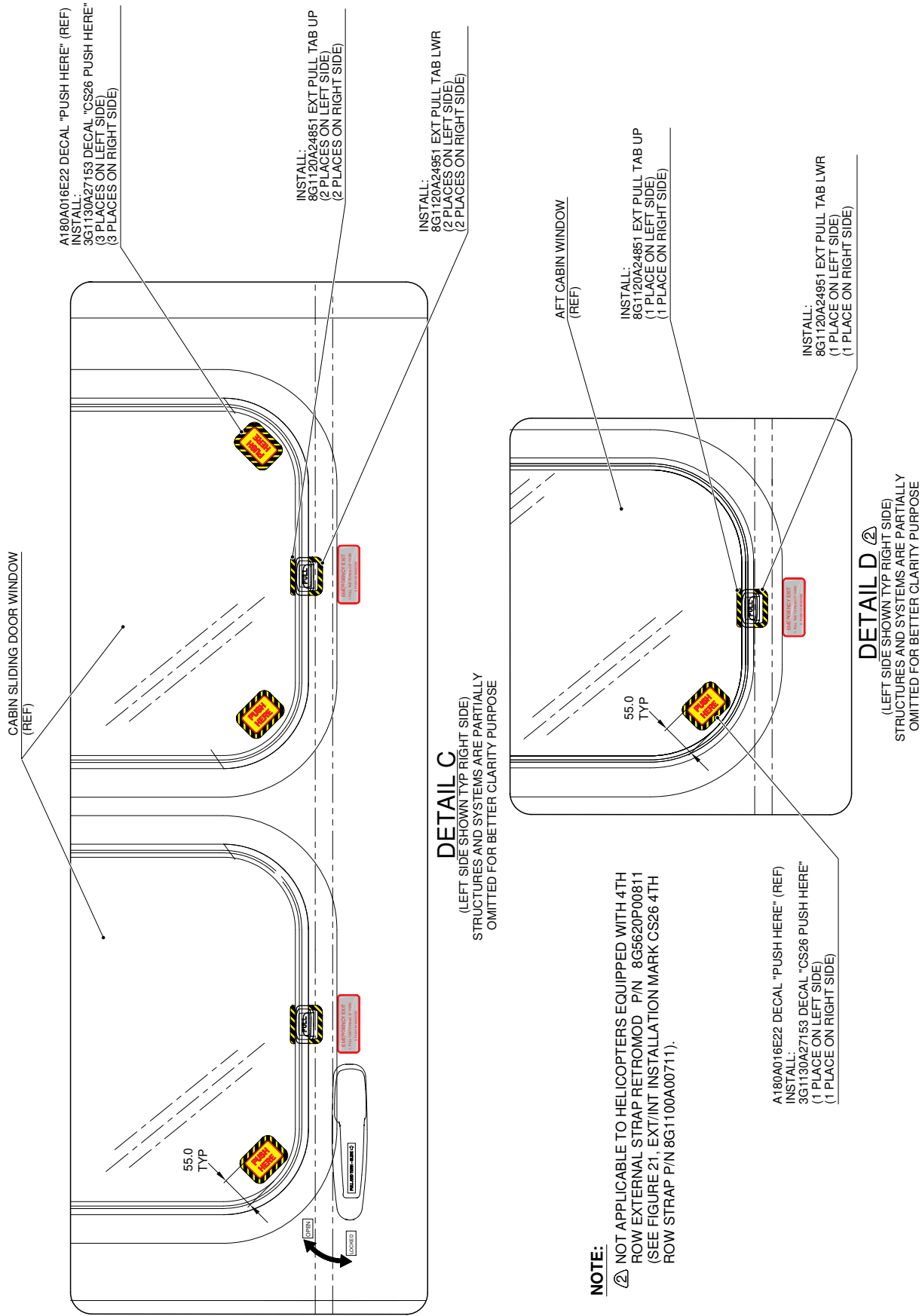


Figure 2

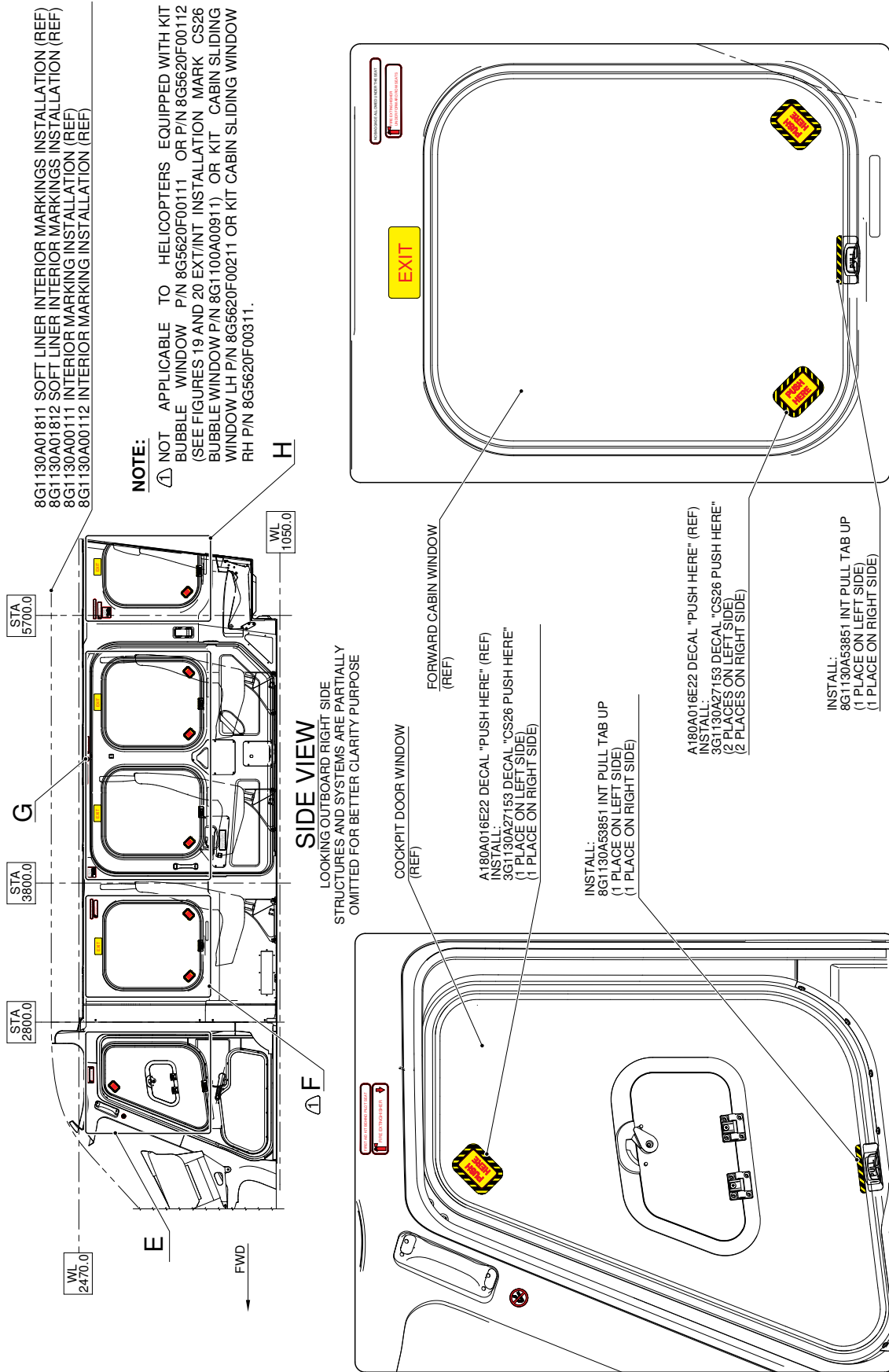
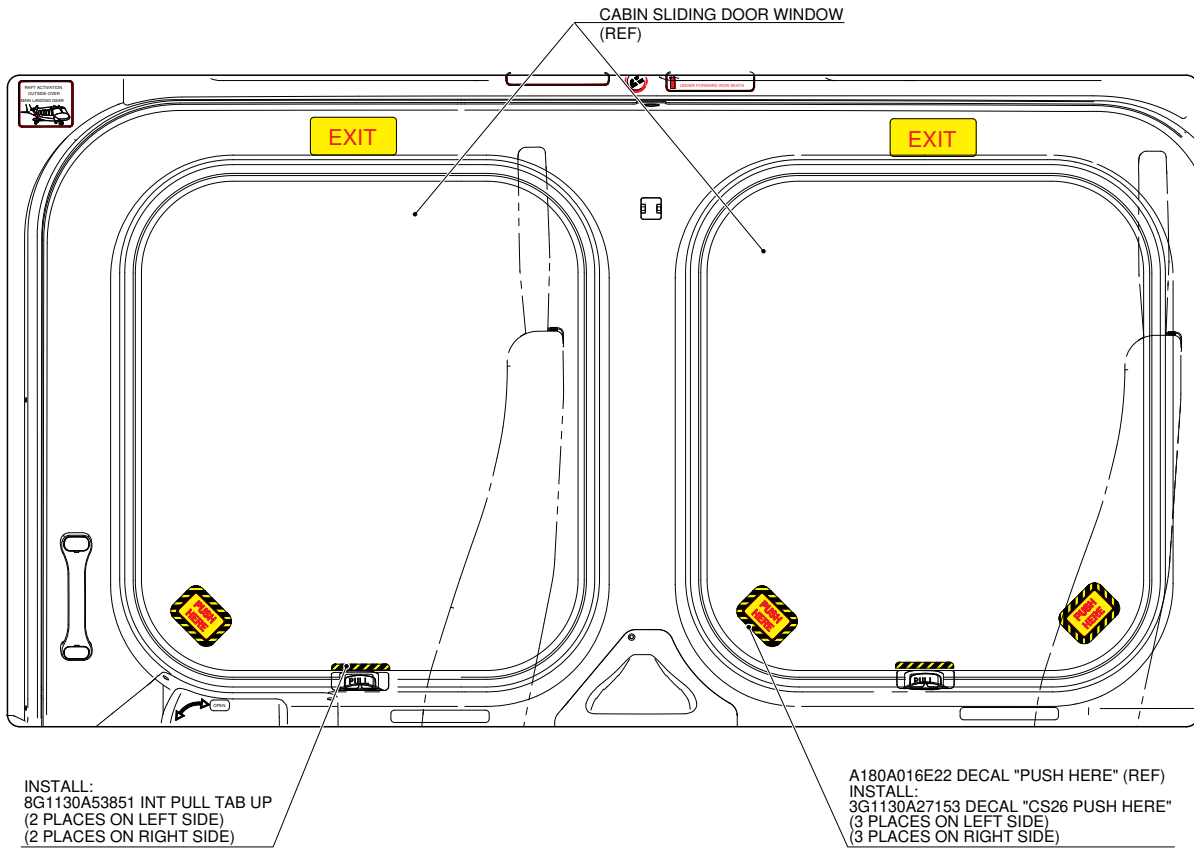
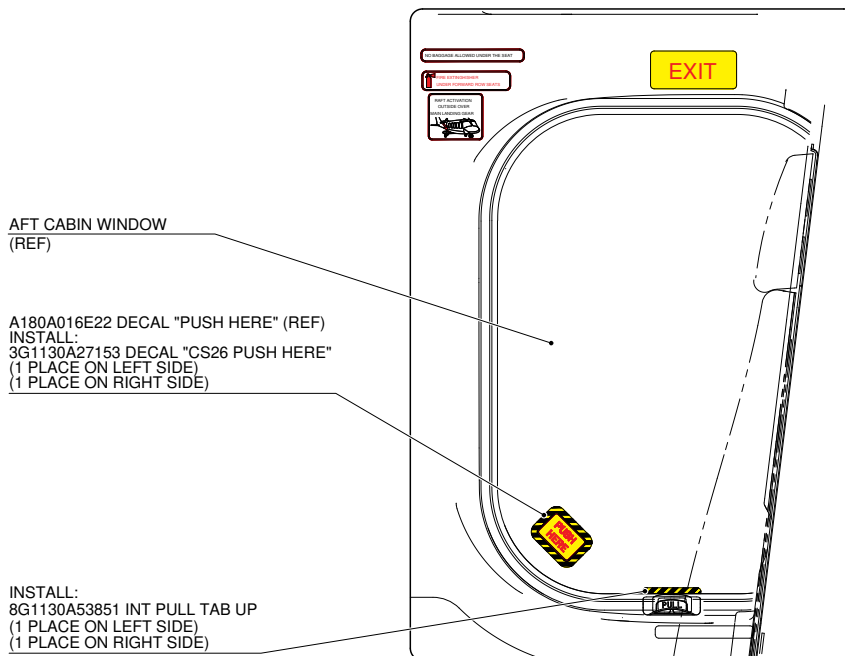


Figure 3



DETAIL G
(RIGHT SIDE SHOWN TYP LEFT SIDE)
STRUCTURES AND SYSTEMS ARE PARTIALLY
OMITTED FOR BETTER CLARITY PURPOSE



DETAIL H
(RIGHT SIDE SHOWN TYP LEFT SIDE)
STRUCTURES AND SYSTEMS ARE PARTIALLY
OMITTED FOR BETTER CLARITY PURPOSE

Figure 4

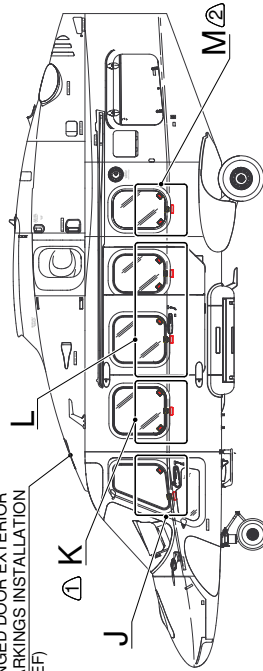
S.B. N°189-381 OPTIONAL
DATE: August 3, 2023
REVISION: /

8G1100A00311
EXTERIOR INSTALLATION
MARK CS26 SLIDE ALL TABS
(APPLICABLE TO HELICOPTERS EQUIPPED WITH HINGED DOOR
EXTERIOR MARKINGS INSTALLATION P/N 8G1120A04111)

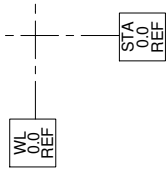
NOTE:
⚠ NOT APPLICABLE TO HELICOPTERS EQUIPPED WITH KIT BUBBLE WINDOW P/N 8G5620F00111 OR P/N 8G5620F00112 (SEE FIGURES 19 AND 20 EXT/INT INSTALLATION MARK CS26 BUBBLE WINDOW P/N 8G1100A00911) OR KIT CABIN SLIDING WINDOW LH P/N 8G5620F00211 OR KIT CABIN SLIDING WINDOW RH P/N 8G5620F00311.

⚠ NOT APPLICABLE TO HELICOPTERS EQUIPPED WITH 4TH ROW EXTERNAL STRAP RETROMOD P/N 8G5620P00811 (SEE FIGURE 21, EXT/INT INSTALLATION MARK CS26 4TH ROW STRAP P/N 8G1100A00711).

8G1120A04111
HINGED DOOR EXTERIOR MARKINGS INSTALLATION (REF)



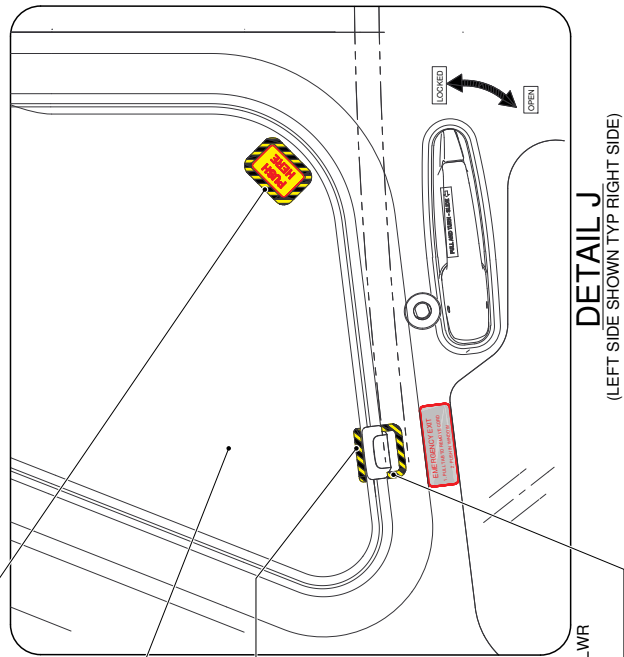
VIEW LOOKING INBOARD LEFT SIDE
(INDICATED)



A180A016E22 DECAL "PUSH HERE" (REF)
INSTALL:
3G1130A27153 DECAL "CS26 PUSH HERE"
(1 PLACE ON LEFT SIDE)
(1 PLACE ON RIGHT SIDE)

COCKPIT DOOR WINDOW (REF)

INSTALL:
8G1120A24851 EXT PULL TAB UP
(1 PLACE ON LEFT SIDE)
(1 PLACE ON RIGHT SIDE)

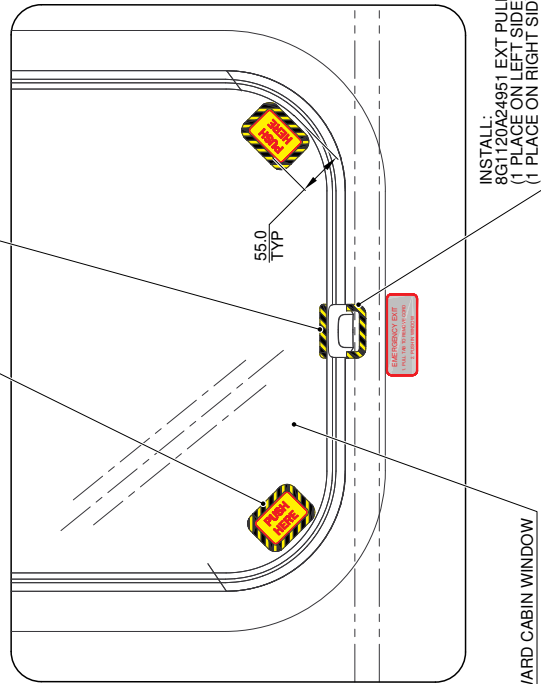


DETAIL J

(LEFT SIDE SHOWN TYP RIGHT SIDE)
STRUCTURES AND SYSTEMS ARE PARTIALLY OMITTED FOR BETTER CLARITY PURPOSE

A180A016E22 DECAL "PUSH HERE" (REF)
INSTALL:
3G1130A27153 DECAL "CS26 PUSH HERE"
(2 PLACES ON LEFT SIDE)
(2 PLACES ON RIGHT SIDE)

INSTALL:
8G1120A24851 EXT PULL TAB UP
(1 PLACE ON LEFT SIDE)
(1 PLACE ON RIGHT SIDE)



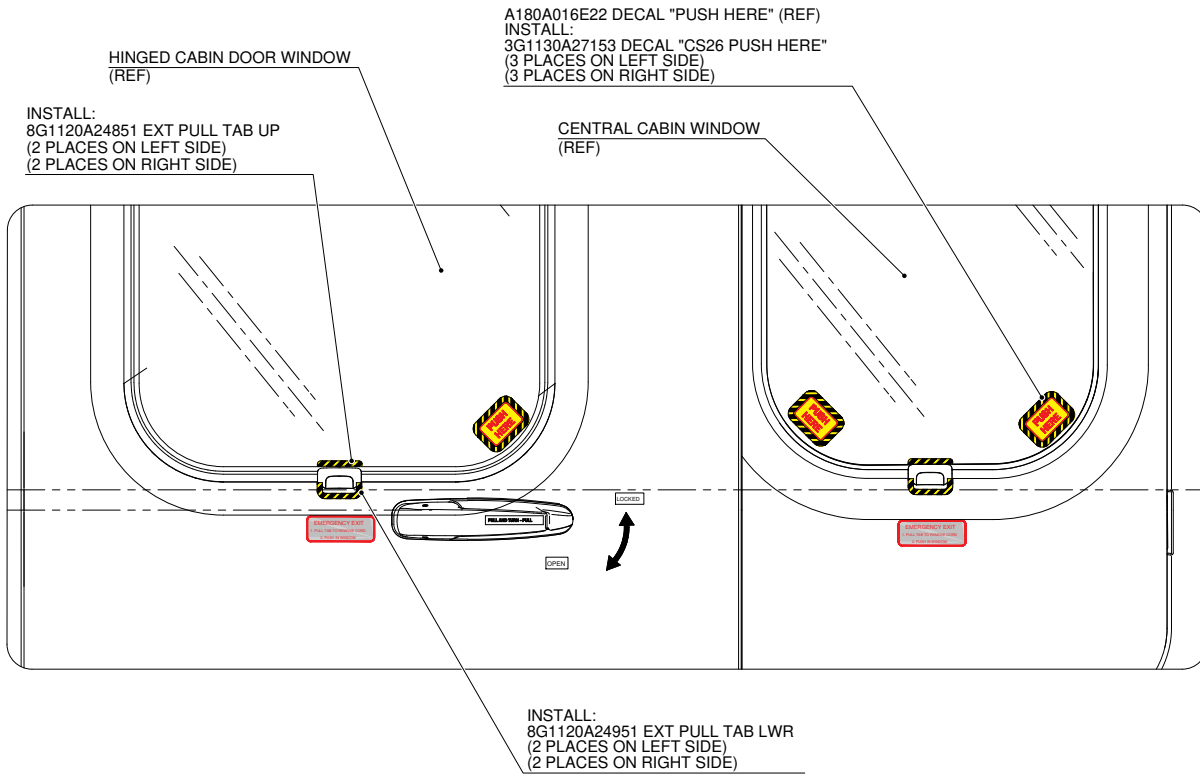
FORWARD CABIN WINDOW (REF)

INSTALL:
8G1120A24951 EXT PULL TAB LWR
(1 PLACE ON LEFT SIDE)
(1 PLACE ON RIGHT SIDE)

DETAIL K

(LEFT SIDE SHOWN TYP RIGHT SIDE)
STRUCTURES AND SYSTEMS ARE PARTIALLY OMITTED FOR BETTER CLARITY PURPOSE

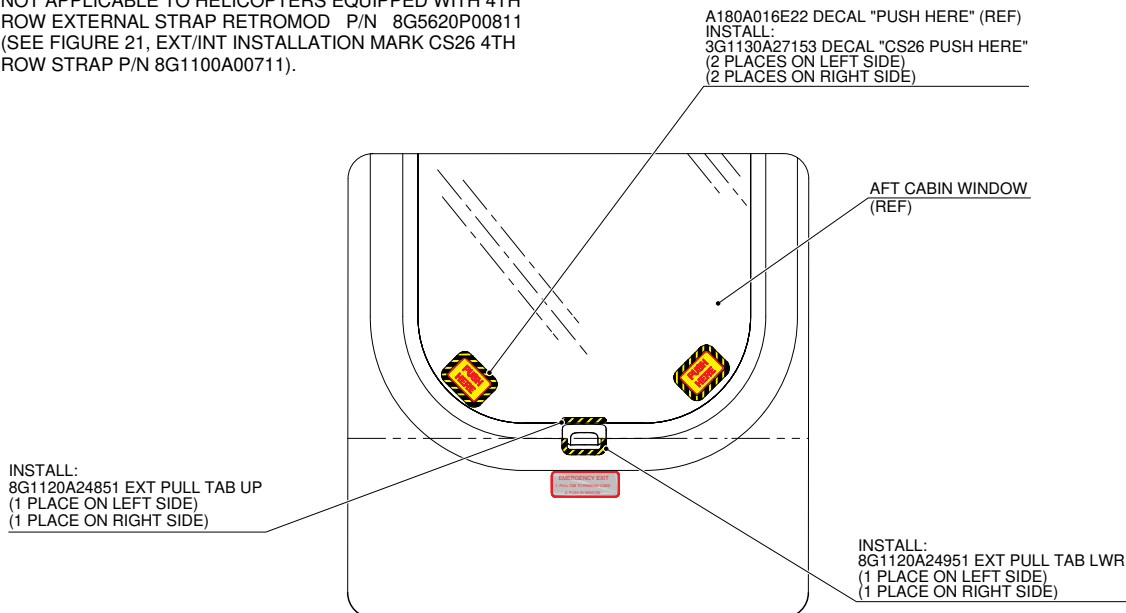
Figure 5



DETAIL L
(LEFT SIDE SHOWN TYP RIGHT SIDE)
STRUCTURES AND SYSTEMS ARE PARTIALLY
OMITTED FOR BETTER CLARITY PURPOSE

NOTE:

② NOT APPLICABLE TO HELICOPTERS EQUIPPED WITH 4TH ROW EXTERNAL STRAP RETROMOD P/N 8G5620P00811 (SEE FIGURE 21, EXT/INT INSTALLATION MARK CS26 4TH ROW STRAP P/N 8G1100A00711).



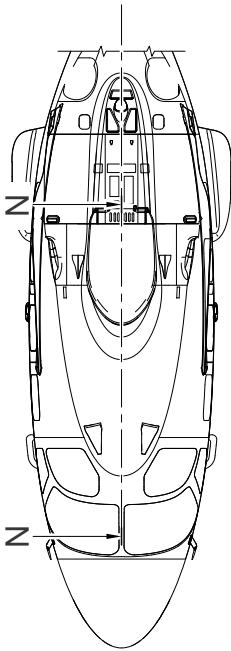
DETAIL M ②
(LEFT SIDE SHOWN TYP RIGHT SIDE)
STRUCTURES AND SYSTEMS ARE PARTIALLY
OMITTED FOR BETTER CLARITY PURPOSE

Figure 6

**8G1100A00311
INTERIOR INSTALLATION
MARK CS26 SLIDE ALL TABS
(APPLICABLE TO HELICOPTERS EQUIPPED WITH HINGED
DOOR INTERIOR MARKINGS INSTALLATION P/N 8G1130A09311)**

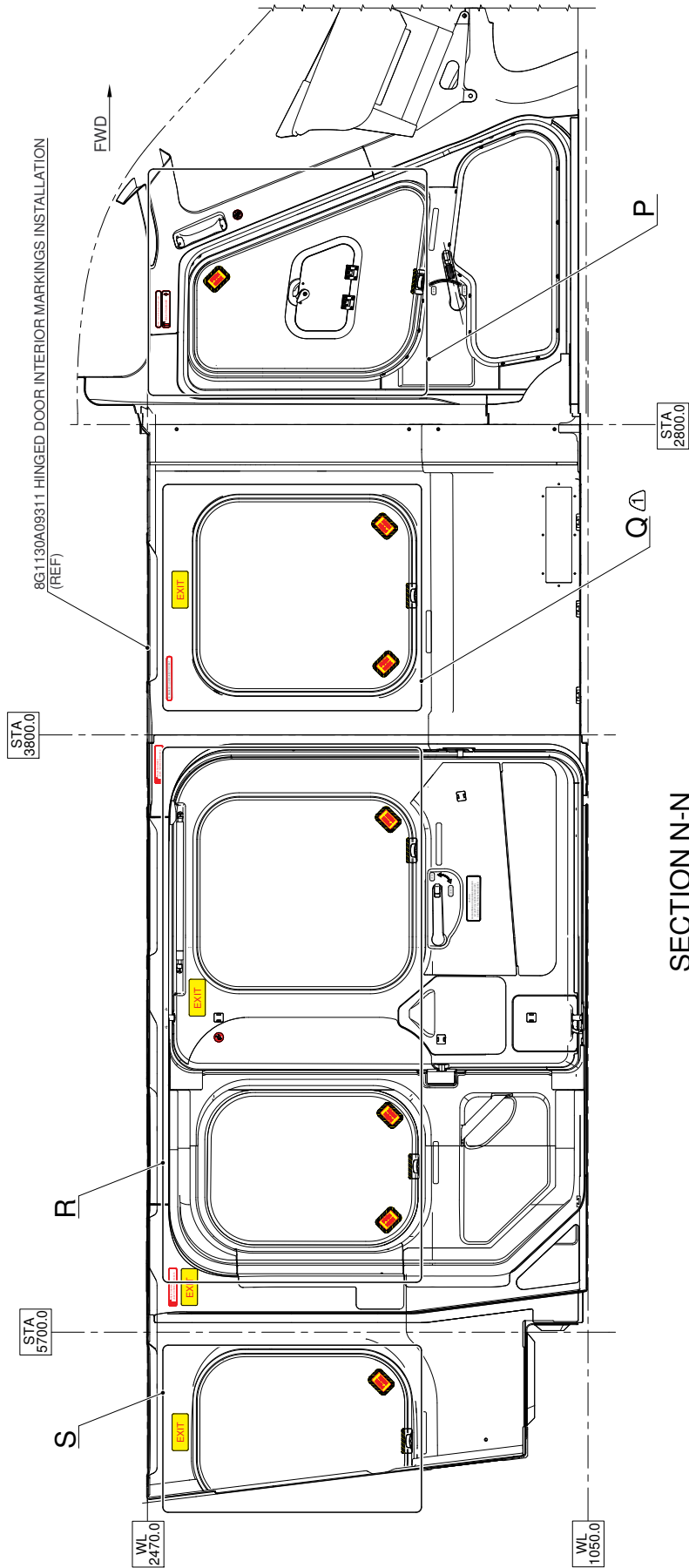
NOTE:

- ⚠ NOT APPLICABLE TO HELICOPTERS EQUIPPED WITH KIT BUBBLE WINDOW P/N 8G5620F00111 OR P/N 8G5620F00112 (SEE FIGURES 19 AND 20 EXT/INT INSTALLATION MARK CS26 BUBBLE WINDOW P/N 8G1100A00911) OR KIT CABIN SLIDING WINDOW LH P/N 8G5620F00211 OR KIT CABIN SLIDING WINDOW RH P/N 8G5620F00311.



TOP VIEW

STRUCTURES AND SYSTEMS ARE PARTIALLY OMITTED FOR BETTER CLARITY PURPOSE



SECTION N-N

ROTATED 180°
VIEW LOOKING OUTBOARD LEFT SIDE
STRUCTURES AND SYSTEMS ARE PARTIALLY OMITTED FOR BETTER CLARITY PURPOSE

Figure 7

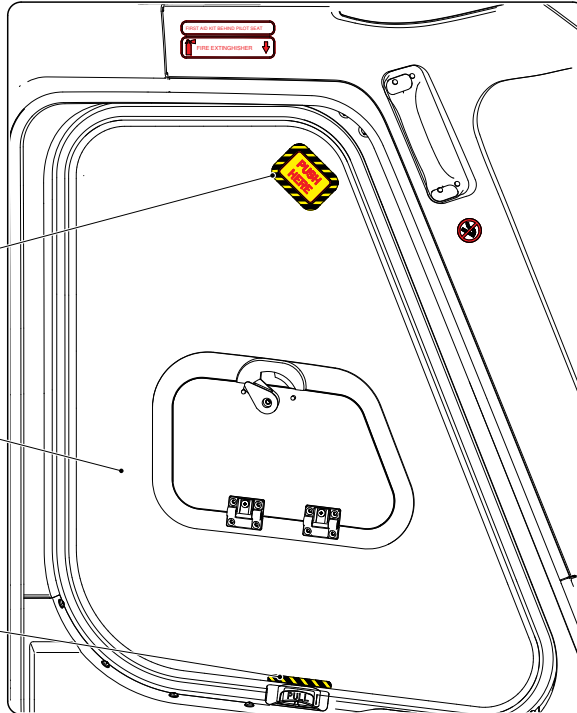
NOTE:

⚠ NOT APPLICABLE TO HELICOPTERS EQUIPPED WITH KIT BUBBLE WINDOW P/N 8G5620F00111 OR P/N 8G5620F00112 (SEE FIGURES 19 AND 20 EXT/INT INSTALLATION MARK CS26 BUBBLE WINDOW P/N 8G1100A00911) OR KIT CABIN SLIDING WINDOW LH P/N 8G5620F00211 OR KIT CABIN SLIDING WINDOW RH P/N 8G5620F00311.

A180A016E22 DECAL "PUSH HERE" (REF)
INSTALL:
3G1130A27153 DECAL "CS26 PUSH HERE"
(1 PLACE ON LEFT SIDE)
(1 PLACE ON RIGHT SIDE)

COCKPIT DOOR WINDOW
(REF)

INSTALL:
8G1130A53851 INT PULL TAB UP
(1 PLACE ON LEFT SIDE)
(1 PLACE ON RIGHT SIDE)



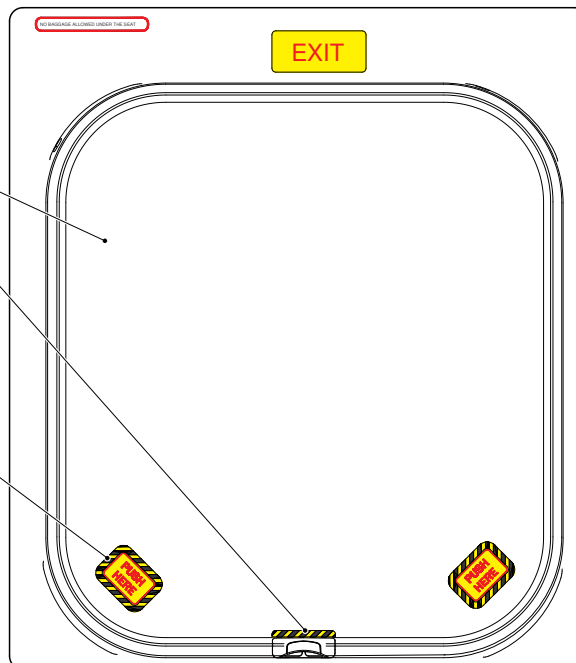
DETAIL P

(LEFT SIDE SHOWN TYP RIGHT SIDE)
STRUCTURES AND SYSTEMS ARE PARTIALLY
OMITTED FOR BETTER CLARITY PURPOSE

FORWARD CABIN WINDOW
(REF)

INSTALL:
8G1130A53851 INT PULL TAB UP
(1 PLACE ON LEFT SIDE)
(1 PLACE ON RIGHT SIDE)

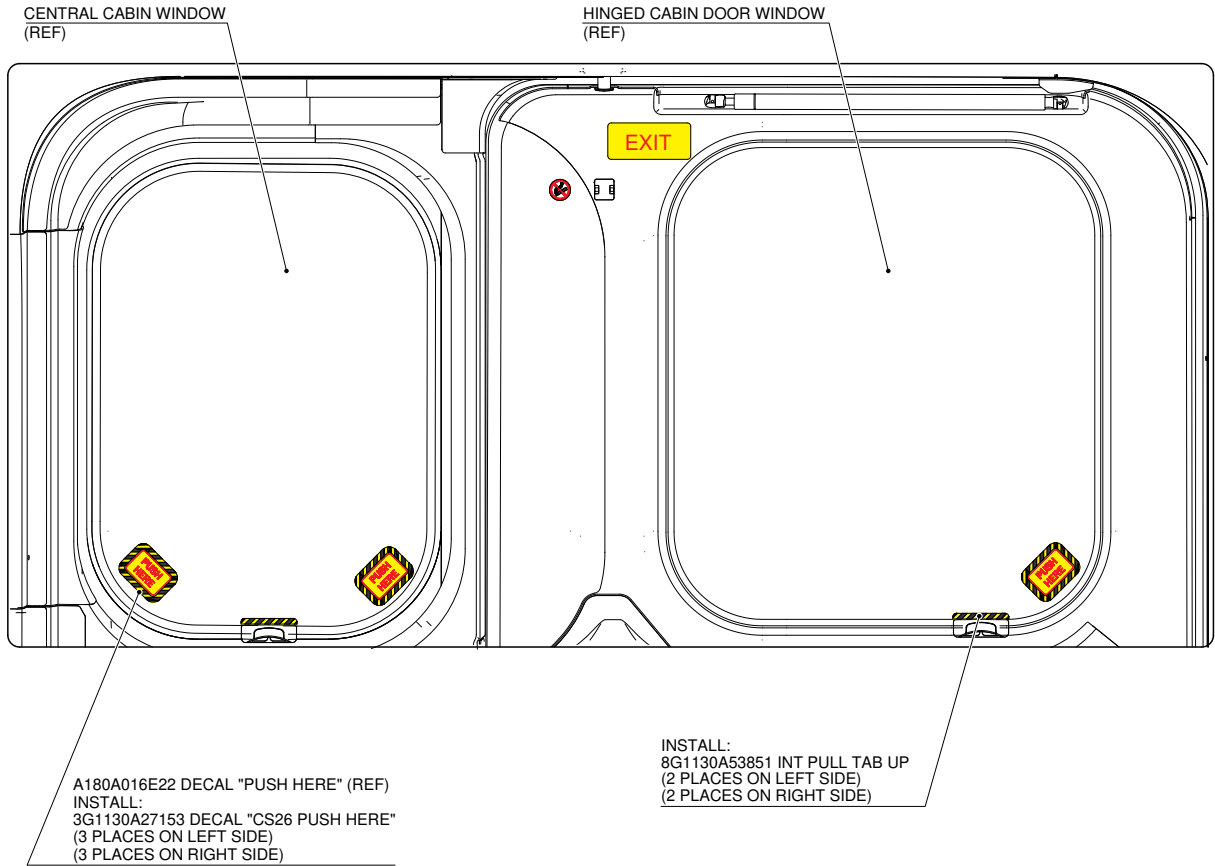
A180A016E22 DECAL "PUSH HERE" (REF)
INSTALL:
3G1130A27153 DECAL "CS26 PUSH HERE"
(2 PLACES ON LEFT SIDE)
(2 PLACES ON RIGHT SIDE)



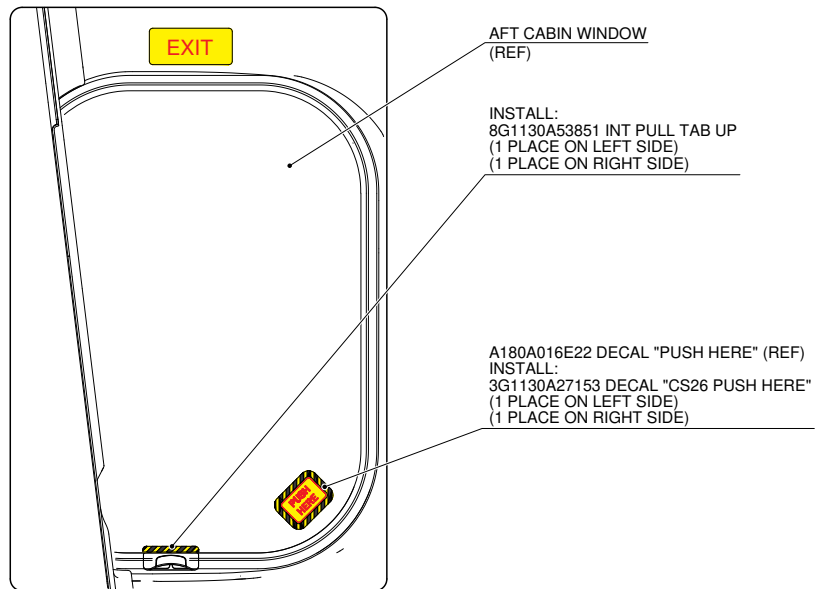
DETAIL Q ⚠

(LEFT SIDE SHOWN TYP RIGHT SIDE)
STRUCTURES AND SYSTEMS ARE PARTIALLY
OMITTED FOR BETTER CLARITY PURPOSE

Figure 8



DETAIL R
(LEFT SIDE SHOWN TYP RIGHT SIDE)
STRUCTURES AND SYSTEMS ARE PARTIALLY
OMITTED FOR BETTER CLARITY PURPOSE



DETAIL S
(LEFT SIDE SHOWN TYP RIGHT SIDE)
STRUCTURES AND SYSTEMS ARE PARTIALLY
OMITTED FOR BETTER CLARITY PURPOSE

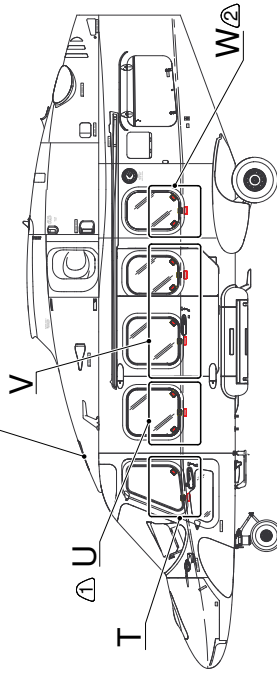
Figure 9

8G1100A00311
EXTERIOR INSTALLATION
MARK CS26 SLIDE ALL TABS
(APPLICABLE TO HELICOPTERS EQUIPPED WITH HINGED DOOR
EXTERIOR MARKINGS INSTALLATION P/N 8G1120A04112)

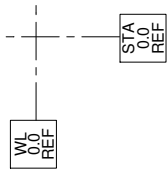
NOTE:
① NOT APPLICABLE TO HELICOPTERS EQUIPPED WITH KIT BUBBLE WINDOW P/N 8G5620F00111 OR P/N 8G5620F00112 (SEE FIGURES 19 AND 20 EXT/INT INSTALLATION MARK CS26 BUBBLE WINDOW P/N 8G1100A00911) OR KIT CABIN SLIDING WINDOW LH P/N 8G5620F00211 OR KIT CABIN SLIDING WINDOW RH P/N 8G5620F00311.

② NOT APPLICABLE TO HELICOPTERS EQUIPPED WITH 4TH ROW EXTERNAL STRAP RETROMOD P/N 8G5620P00811 (SEE FIGURE 21, EXT/INT INSTALLATION MARK CS26 4TH ROW STRAP P/N 8G1100A00711).

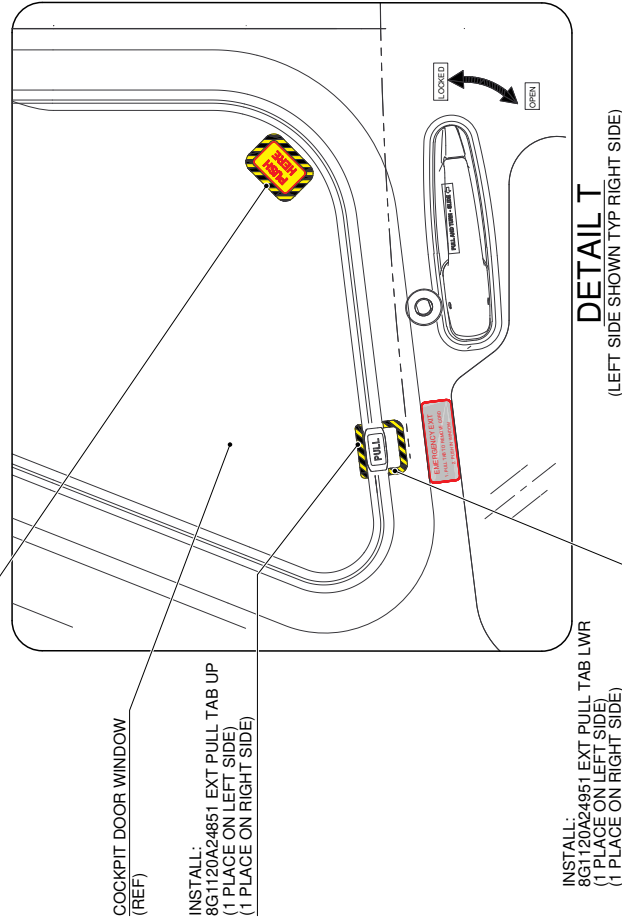
8G1120A04112
HINGED DOOR EXTERIOR
MARKINGS INSTALLATION
(REF)



VIEW LOOKING INBOARD LEFT SIDE
(INDICATED)



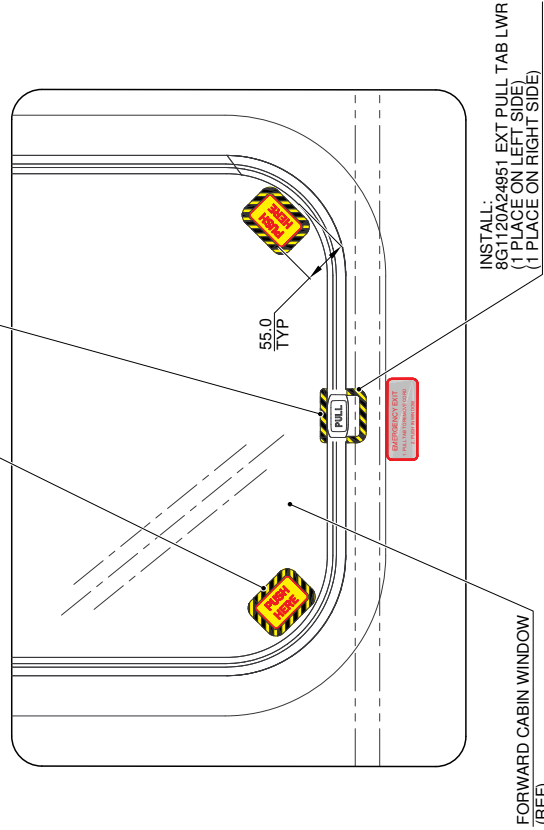
A180A016E22 DECAL "PUSH HERE". (REF)
INSTALL:
3G1130A27153 DECAL "CS26 PUSH HERE"
(1 PLACE ON LEFT SIDE)
(1 PLACE ON RIGHT SIDE)



DETAIL T
(LEFT SIDE SHOWN TYP RIGHT SIDE)
STRUCTURES AND SYSTEMS ARE PARTIALLY
OMITTED FOR BETTER CLARITY PURPOSE

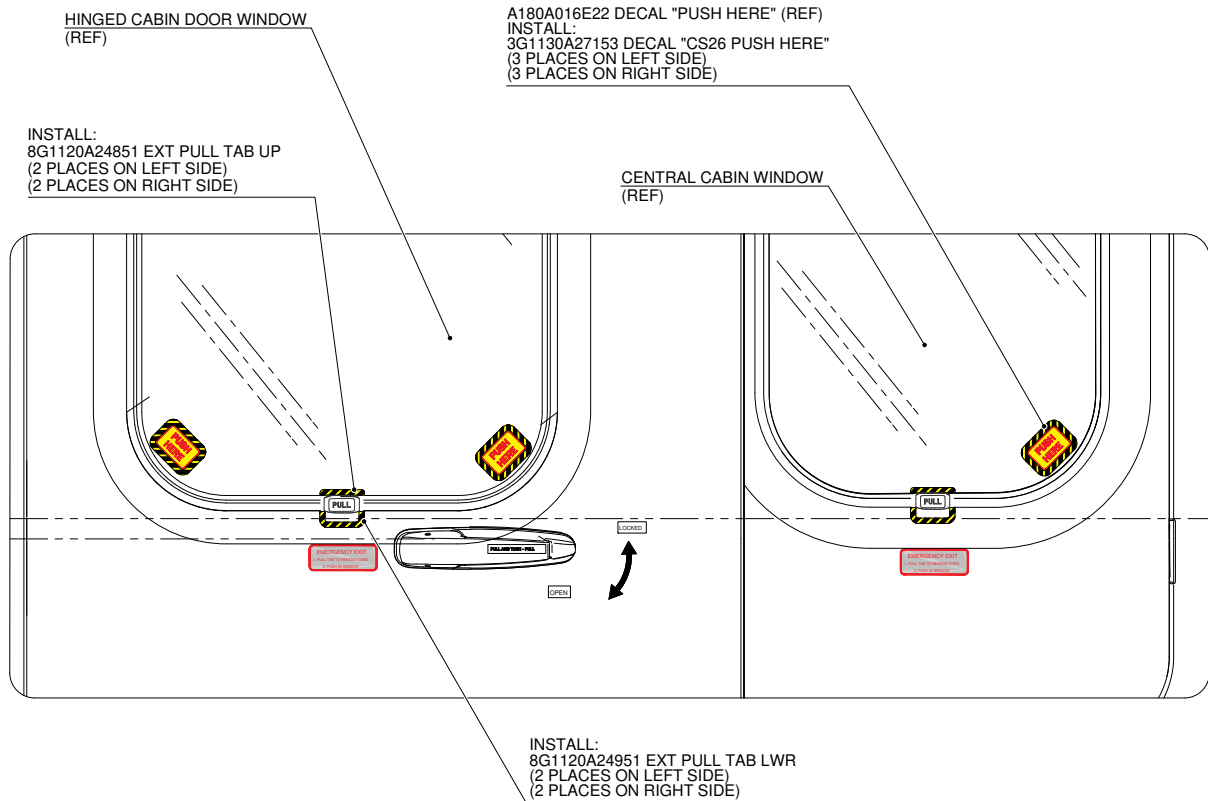
A180A016E22 DECAL "PUSH HERE". (REF)
INSTALL:
3G1130A27153 DECAL "CS26 PUSH HERE"
(2 PLACES ON LEFT SIDE)
(2 PLACES ON RIGHT SIDE)

INSTALL:
8G1120A24951 EXT PULL TAB UP
(1 PLACE ON LEFT SIDE)
(1 PLACE ON RIGHT SIDE)



DETAIL U ①
(LEFT SIDE SHOWN TYP RIGHT SIDE)
STRUCTURES AND SYSTEMS ARE PARTIALLY
OMITTED FOR BETTER CLARITY PURPOSE

Figure 10

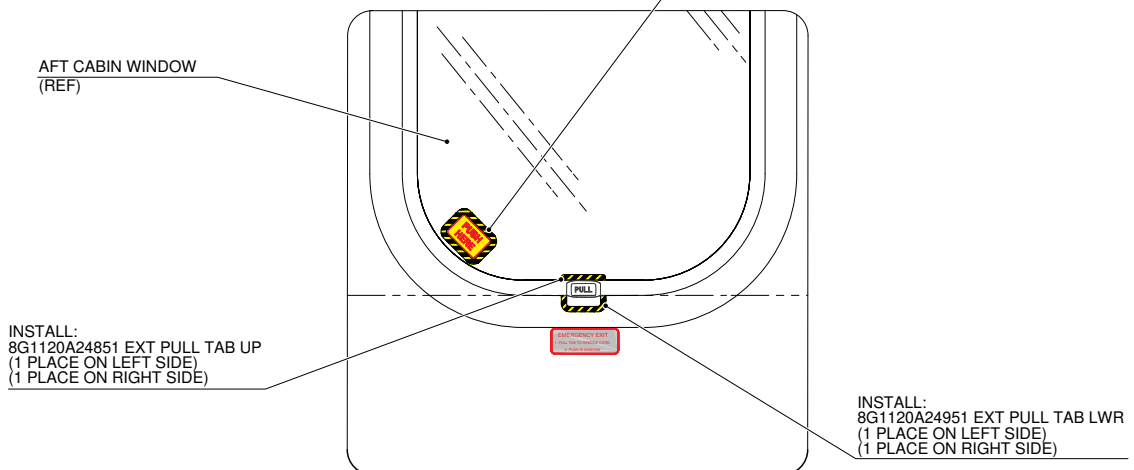


DETAIL V
(LEFT SIDE SHOWN TYP RIGHT SIDE)
STRUCTURES AND SYSTEMS ARE PARTIALLY
OMITTED FOR BETTER CLARITY PURPOSE

NOTE:

Ⓜ NOT APPLICABLE TO HELICOPTERS EQUIPPED WITH 4TH ROW EXTERNAL STRAP RETROMOD P/N 8G5620P00811 (SEE FIGURE 21, EXT/INT INSTALLATION MARK CS26 4TH ROW STRAP P/N 8G1100A00711).

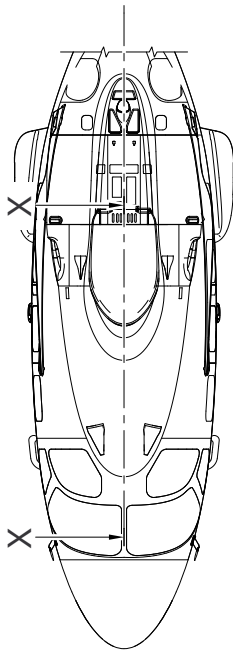
A180A016E22 DECAL "PUSH HERE" (REF)
INSTALL:
3G1130A27153 DECAL "CS26 PUSH HERE"
(1 PLACE ON LEFT SIDE)
(1 PLACE ON RIGHT SIDE)



DETAIL W Ⓜ
(LEFT SIDE SHOWN TYP RIGHT SIDE)
STRUCTURES AND SYSTEMS ARE PARTIALLY
OMITTED FOR BETTER CLARITY PURPOSE

Figure 11

8G1100A00311
INTERIOR INSTALLATION
MARK CS26 SLIDE ALL TABS
(APPLICABLE TO HELICOPTERS EQUIPPED WITH HINGED
DOOR INTERIOR MARKINGS INSTALLATION P/N 8G1130A09312)

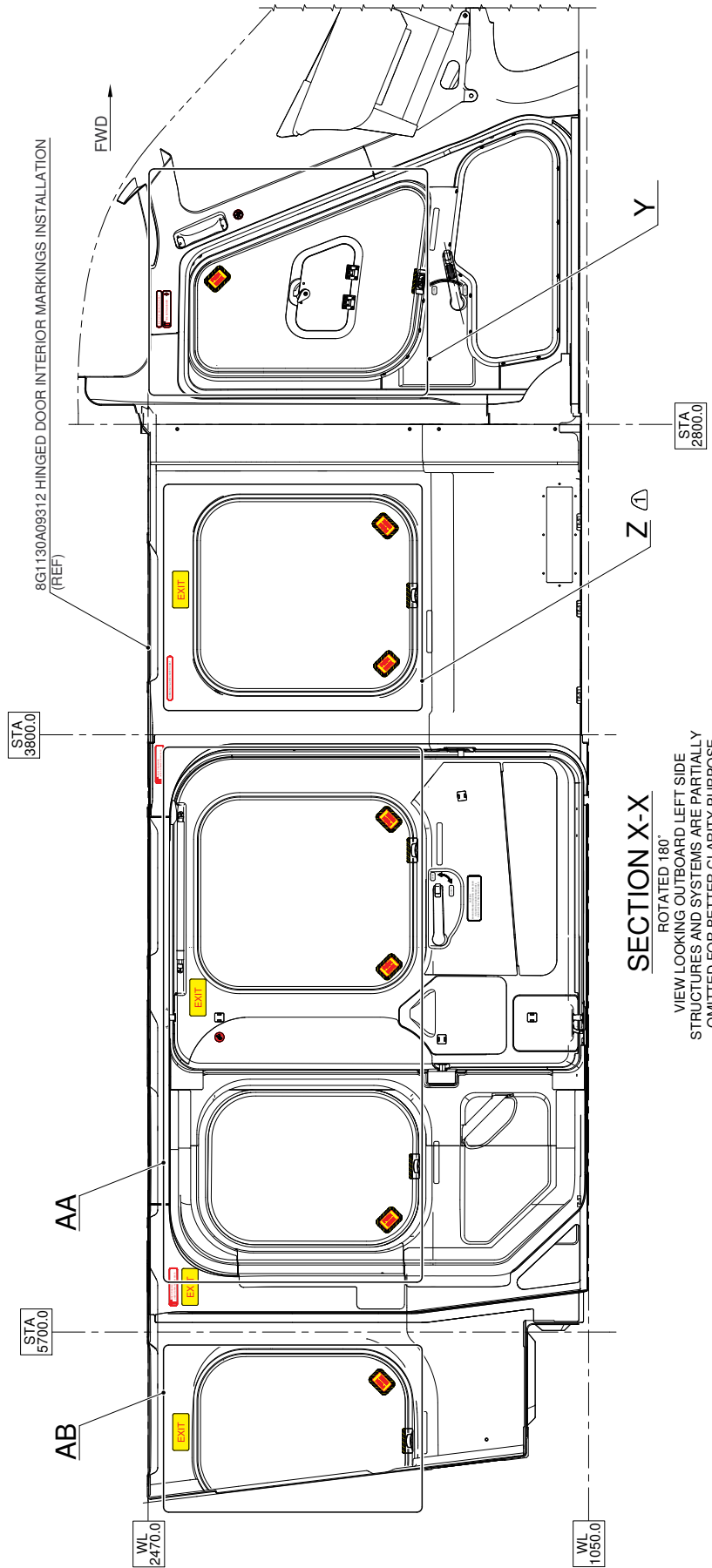


TOP VIEW

STRUCTURES AND SYSTEMS ARE PARTIALLY
OMITTED FOR BETTER CLARITY PURPOSE

NOTE:

- ⚠ NOT APPLICABLE TO HELICOPTERS EQUIPPED WITH KIT BUBBLE WINDOW P/N 8G5620F00111 OR P/N 8G5620F00112 (SEE FIGURES 19 AND 20 EXT/INT INSTALLATION MARK CS26 BUBBLE WINDOW P/N 8G1100A00911) OR KIT CABIN SLIDING WINDOW LH P/N 8G5620F00211 OR KIT CABIN SLIDING WINDOW RH P/N 8G5620F00311.



SECTION X-X

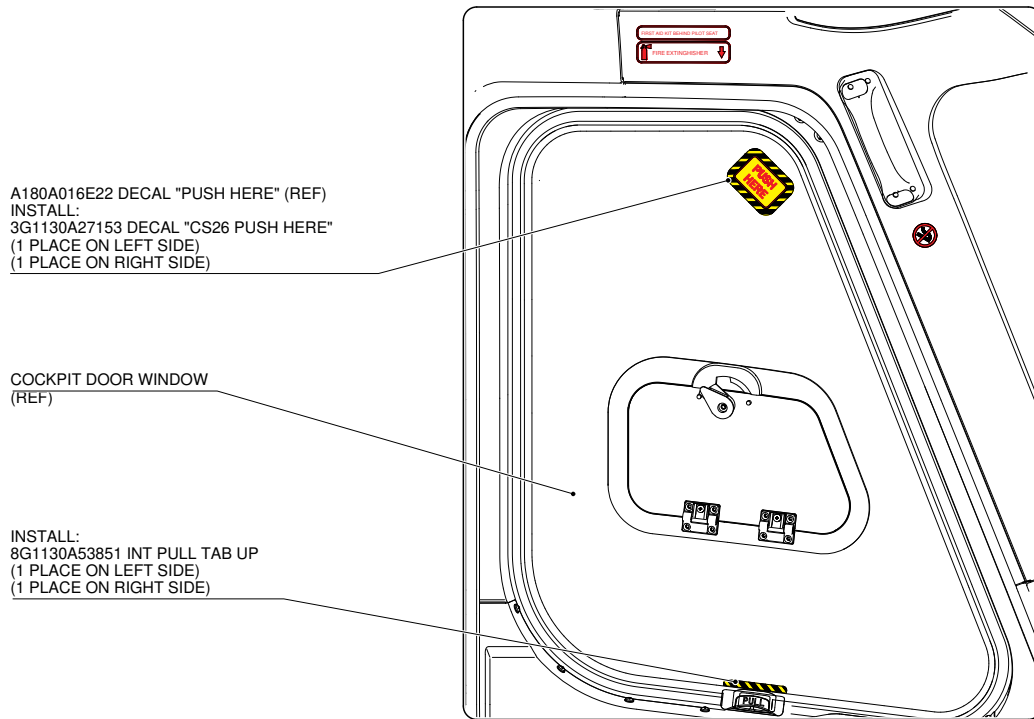
ROTATED 180°

VIEW LOOKING OUTBOARD LEFT SIDE
STRUCTURES AND SYSTEMS ARE PARTIALLY
OMITTED FOR BETTER CLARITY PURPOSE

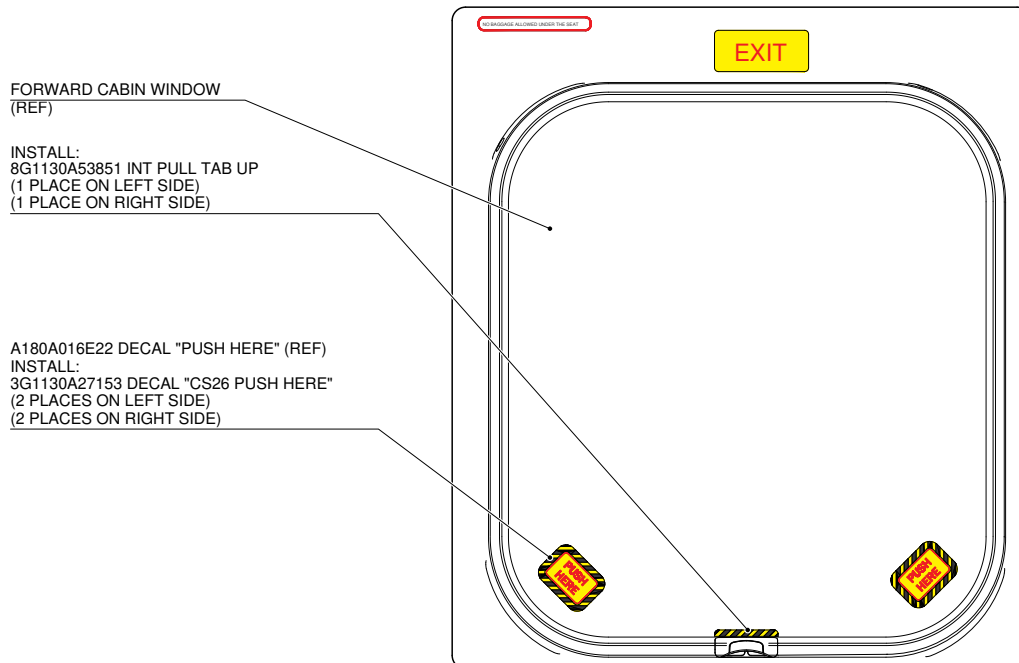
Figure 12

NOTE:

⚠ NOT APPLICABLE TO HELICOPTERS EQUIPPED WITH KIT BUBBLE WINDOW P/N 8G5620F00111 OR P/N 8G5620F00112 (SEE FIGURES 19 AND 20 EXT/INT INSTALLATION MARK CS26 BUBBLE WINDOW P/N 8G1100A00911) OR KIT CABIN SLIDING WINDOW LH P/N 8G5620F00211 OR KIT CABIN SLIDING WINDOW RH P/N 8G5620F00311.

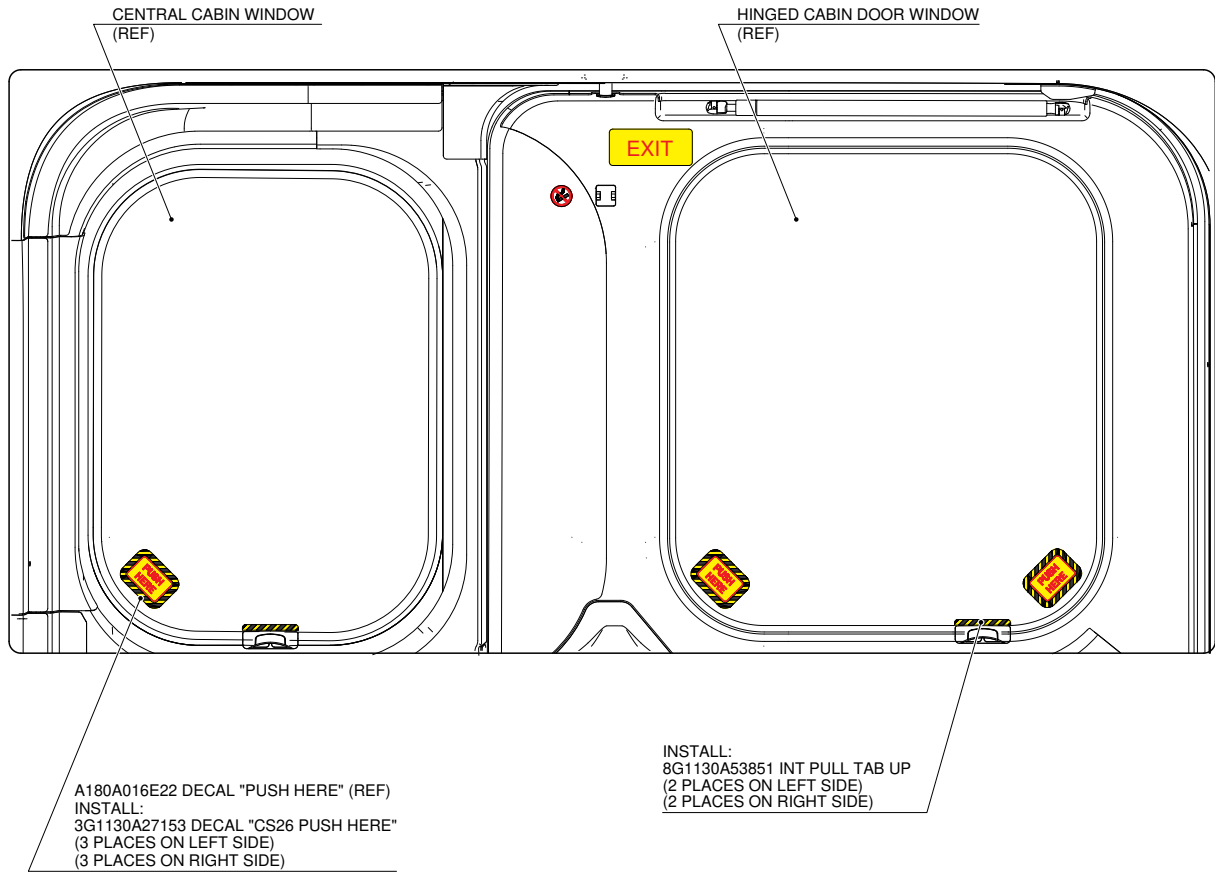


DETAIL Y
(LEFT SIDE SHOWN TYP RIGHT SIDE)
STRUCTURES AND SYSTEMS ARE PARTIALLY
OMITTED FOR BETTER CLARITY PURPOSE

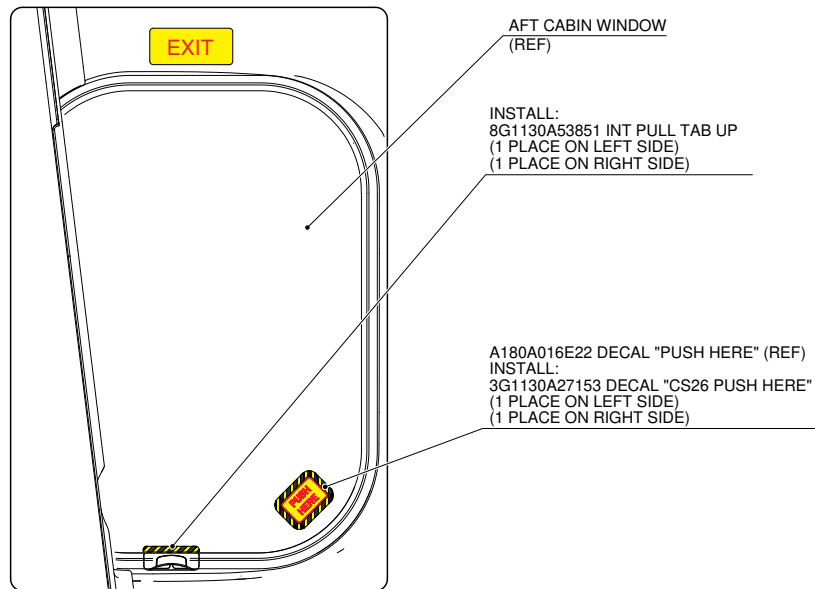


DETAIL Z ⚠
(LEFT SIDE SHOWN TYP RIGHT SIDE)
STRUCTURES AND SYSTEMS ARE PARTIALLY
OMITTED FOR BETTER CLARITY PURPOSE

Figure 13



DETAIL AA
(LEFT SIDE SHOWN TYP RIGHT SIDE)
STRUCTURES AND SYSTEMS ARE PARTIALLY
OMITTED FOR BETTER CLARITY PURPOSE



DETAIL AB
(LEFT SIDE SHOWN TYP RIGHT SIDE)
STRUCTURES AND SYSTEMS ARE PARTIALLY
OMITTED FOR BETTER CLARITY PURPOSE

Figure 14

NOTE:

⚠ NOT APPLICABLE TO HELICOPTERS EQUIPPED WITH KIT BUBBLE WINDOW P/N 8G5620F00111 OR P/N 8G5620F00112 (SEE FIGURES 19 AND 20 EXT/INT INSTALLATION MARK CS26 BUBBLE WINDOW P/N 8G1100A00911) OR KIT CABIN SLIDING WINDOW LH P/N 8G5620F00211 OR KIT CABIN SLIDING WINDOW RH P/N 8G5620F00311.

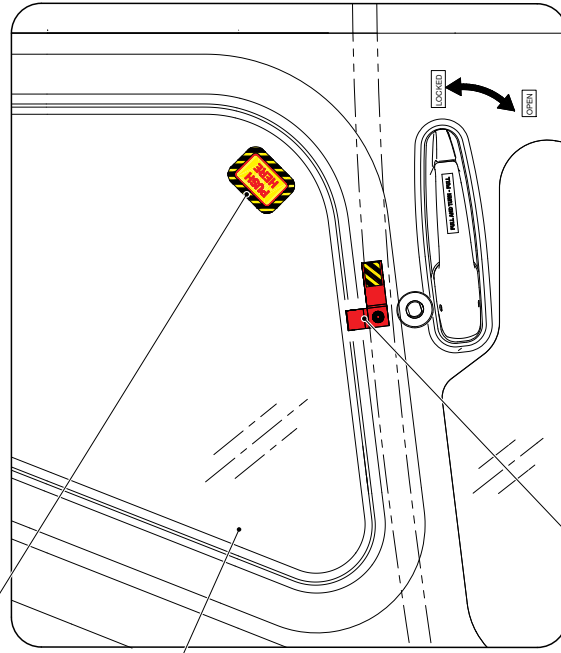
⚠ IN CASE THE PULL STRAP CS26 P/N 3G5211A14431 HAS NOT BEEN PROVIDED, DO NOT REMOVE THE EXISTING STRAP ASSEMBLY AND INSTALL THE DECAL CS26 PULL STRAP P/N 3G1130A27152 ACCORDING TO FIGURE 29.

8G1120A00111 EXTERIOR MARKING INSTALLATION (REF)
8G1120A00112 EXTERIOR MARKING INSTALLATION (REF)

WL
0,0
REF

A180A016E22 DECAL "PUSH HERE" (REF)
INSTALL:
3G1130A27153 DECAL "CS26 PUSH HERE"
(1 PLACE ON LEFT SIDE)
(1 PLACE ON RIGHT SIDE)

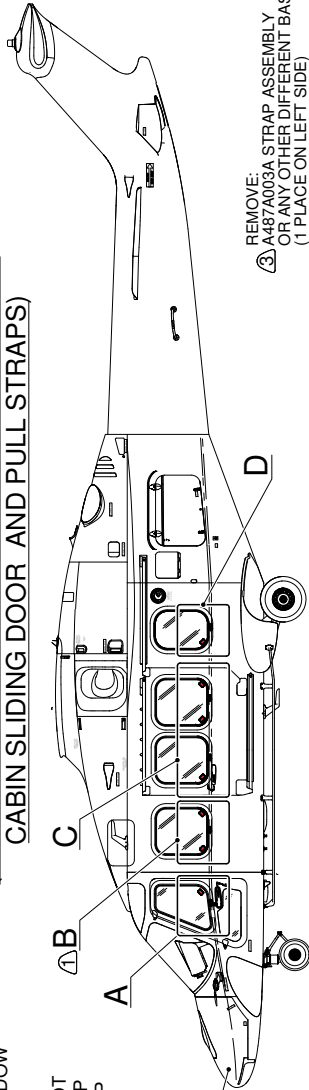
VIEW LOOKING INBOARD LEFT SIDE



DETAIL A

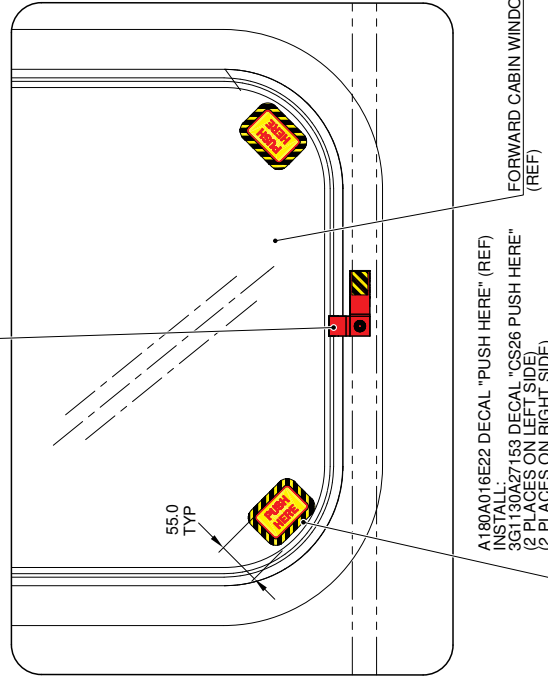
(LEFT SIDE SHOWN TYP RIGHT SIDE)
STRUCTURES AND SYSTEMS ARE PARTIALLY
OMITTED FOR BETTER CLARITY PURPOSE

**8G1100A00511
EXT/INT INSTALLATION
MARK CS26 SLIDE ALL STRAP
(APPLICABLE TO HELICOPTERS EQUIPPED WITH
CABIN SLIDING DOOR AND PULL STRAPS)**



REMOVE:
⚠ A487A003A STRAP ASSEMBLY
OR ANY OTHER DIFFERENT BASIC VERSIONS
(1 PLACE ON LEFT SIDE)
(1 PLACE ON RIGHT SIDE)

INSTALL:
⚠ 3G5211A14431 PULL STRAP CS 26
(1 PLACE ON LEFT SIDE)
(1 PLACE ON RIGHT SIDE)



DETAIL B

(LEFT SIDE SHOWN TYP RIGHT SIDE)
STRUCTURES AND SYSTEMS ARE PARTIALLY
OMITTED FOR BETTER CLARITY PURPOSE

Figure 15

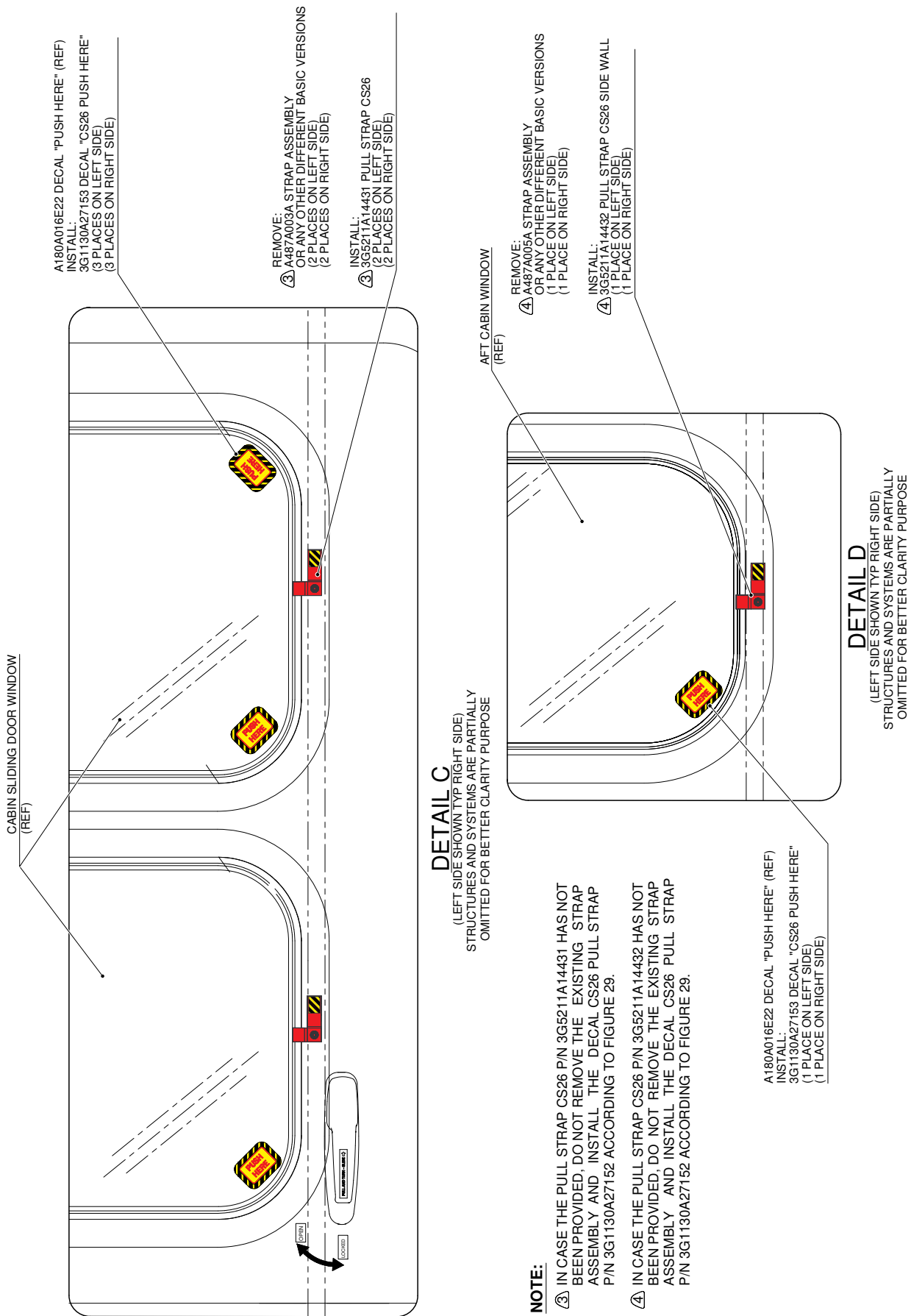


Figure 16

- NOTES:**
- Ⓐ NOT APPLICABLE TO HELICOPTERS EQUIPPED WITH KIT BUBBLE WINDOW P/N 8G5620F00111 OR P/N 8G5620F00112 (SEE FIGURES 19 AND 20 EXT/INT INSTALLATION MARK CS26 BUBBLE WINDOW P/N 8G1100A00911) OR KIT CABIN SLIDING WINDOW LH P/N 8G5620F00211 OR KIT CABIN SLIDING WINDOW RH P/N 8G5620F00311.
 - Ⓑ IN CASE THE PULL STRAP CS26 P/N 3G5211A14431 HAS NOT BEEN PROVIDED, DO NOT REMOVE THE EXISTING STRAP ASSEMBLY AND INSTALL THE DECAL CS26 PULL STRAP P/N 3G1130A27152 ACCORDING TO FIGURE 29.
 - Ⓒ IN CASE THE PULL STRAP CS26 P/N 8G5212A23731 HAS NOT BEEN PROVIDED, DO NOT REMOVE THE EXISTING STRAP ASSEMBLY AND INSTALL THE DECAL CS26 PULL STRAP P/N 3G1130A27152 ACCORDING TO FIGURE 29.

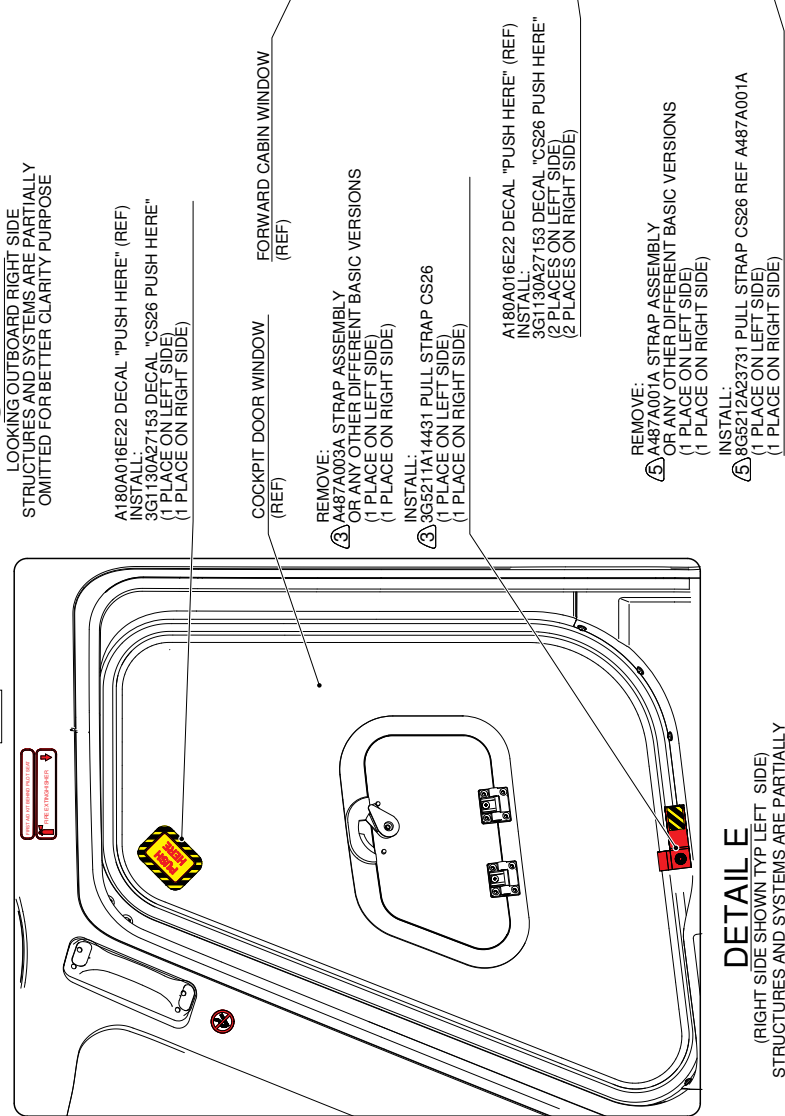
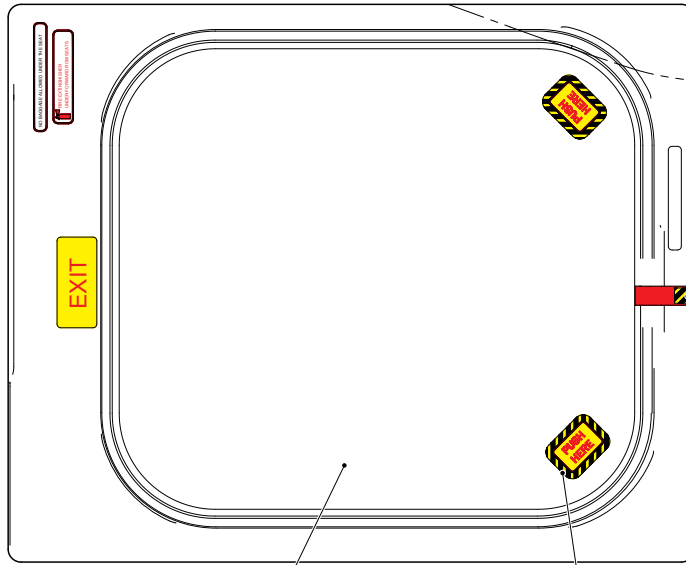
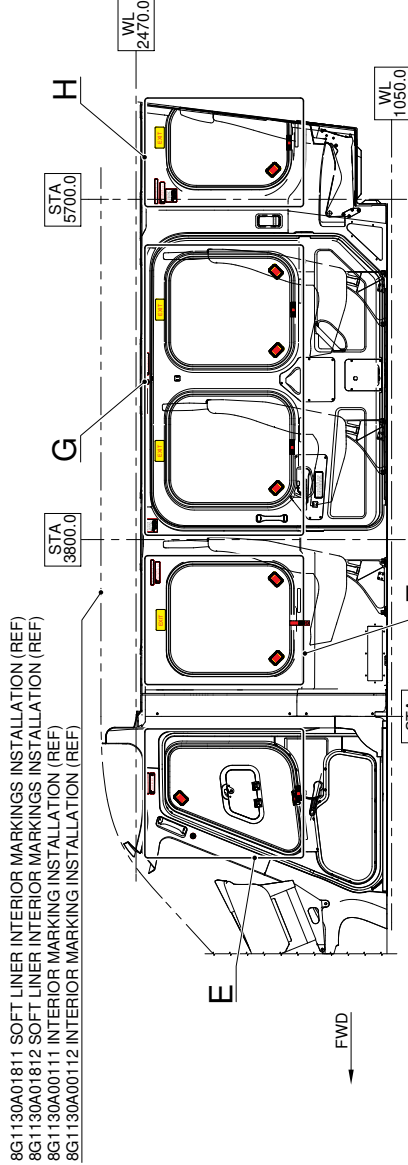
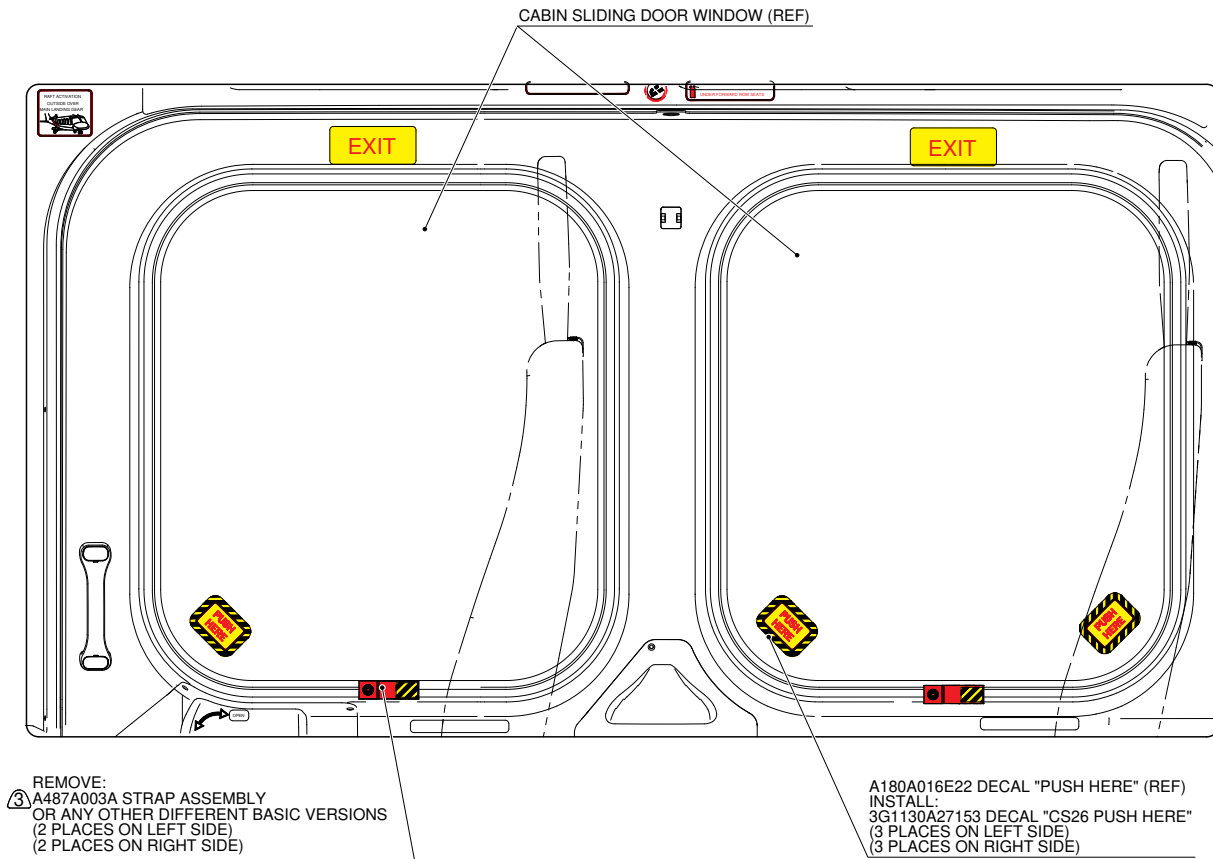


Figure 17



DETAIL G
 (RIGHT SIDE SHOWN TYP LEFT SIDE)
 STRUCTURES AND SYSTEMS ARE PARTIALLY
 OMITTED FOR BETTER CLARITY PURPOSE

NOTE:

- ③ IN CASE THE PULL STRAP CS26 P/N 3G5211A14431 HAS NOT BEEN PROVIDED, DO NOT REMOVE THE EXISTING STRAP ASSEMBLY AND INSTALL THE DECAL CS26 PULL STRAP P/N 3G1130A27152 ACCORDING TO FIGURE 29.

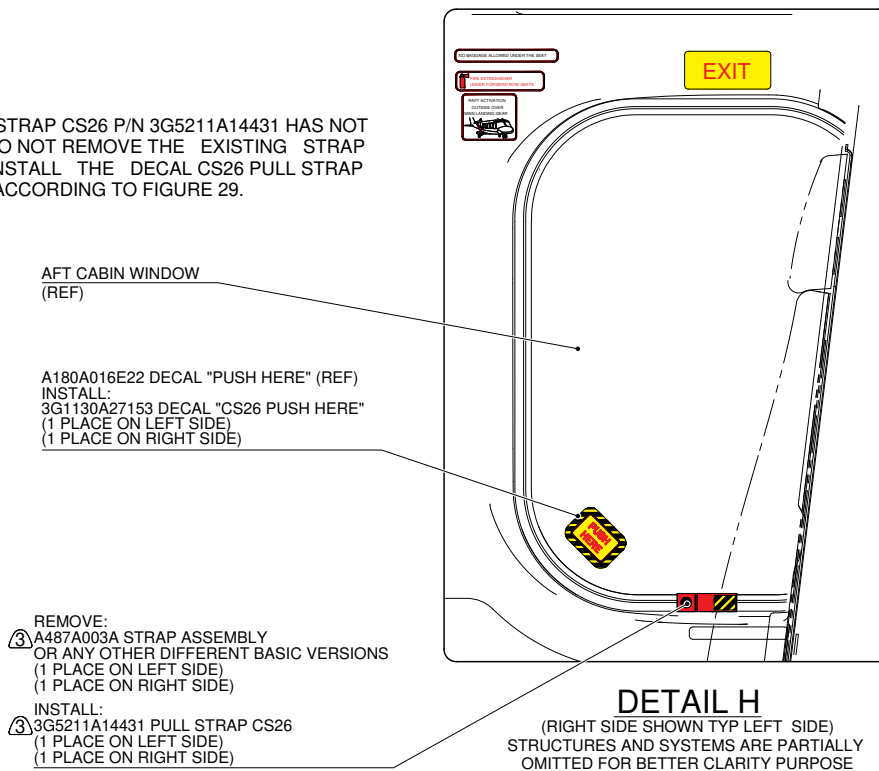


Figure 18

**8G1100A00911
EXT/INT INSTALLATION
MARK CS26 BUBBLE WINDOW
(APPLICABLE TO HELICOPTERS EQUIPPED WITH KIT BUBBLE WINDOW
P/N 8G5620F00111 OR P/N 8G5620F00112)**

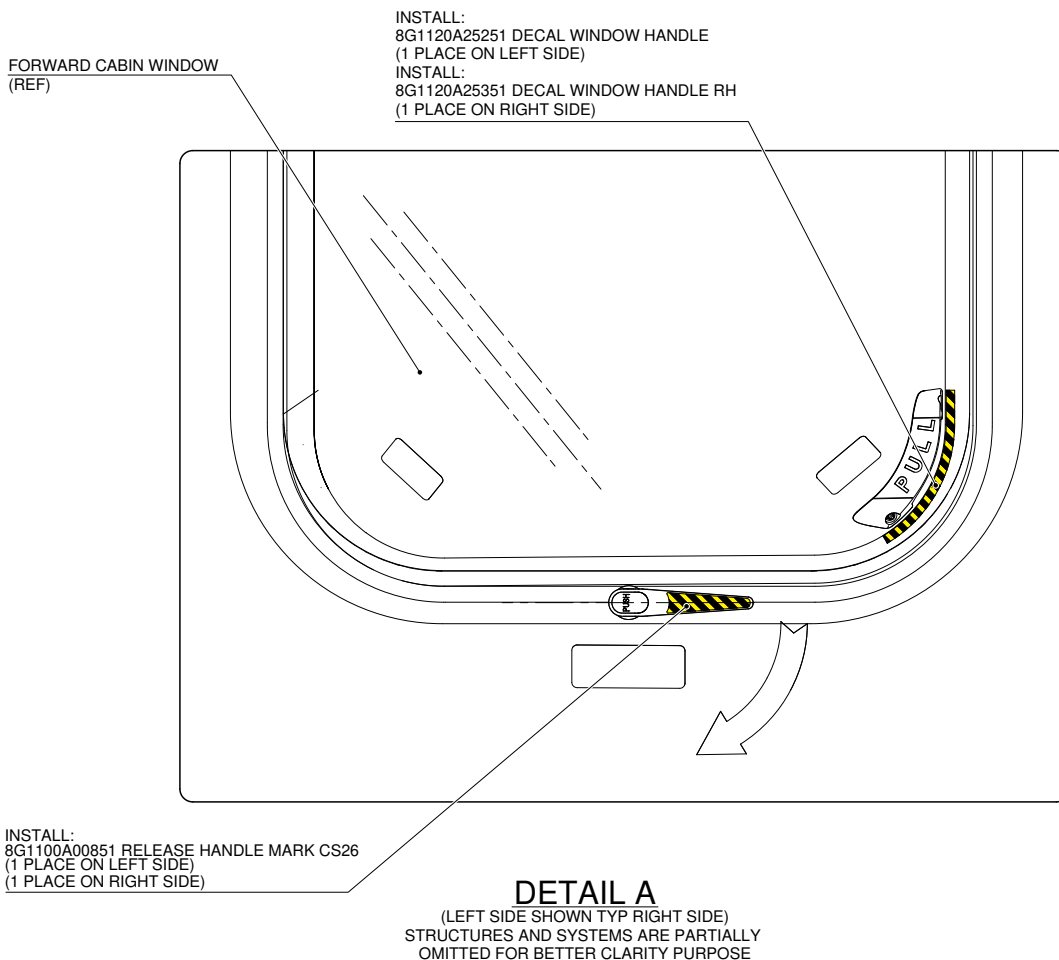
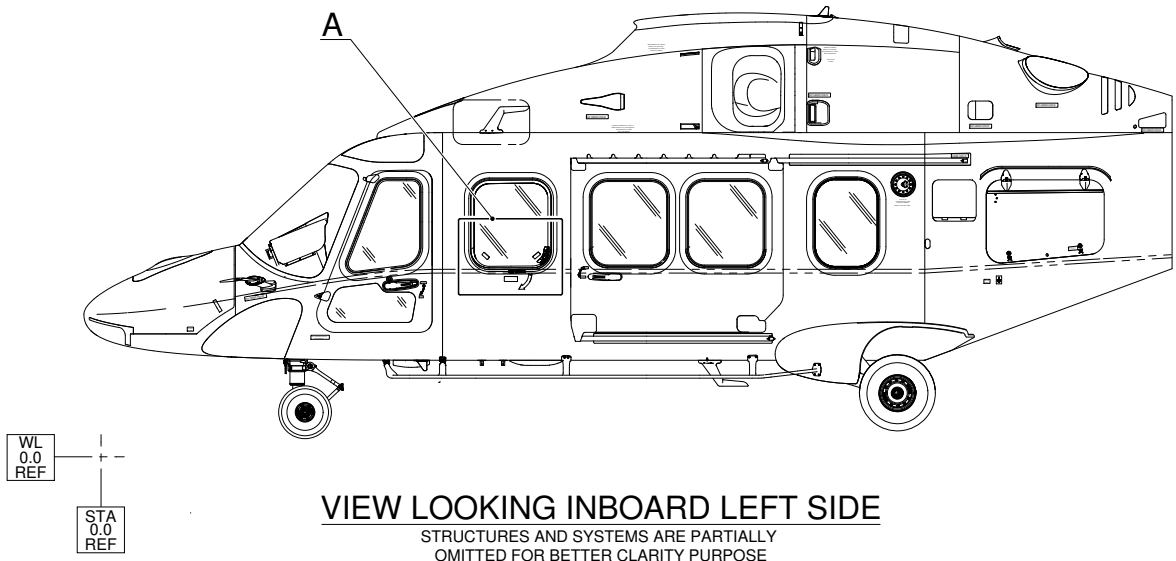
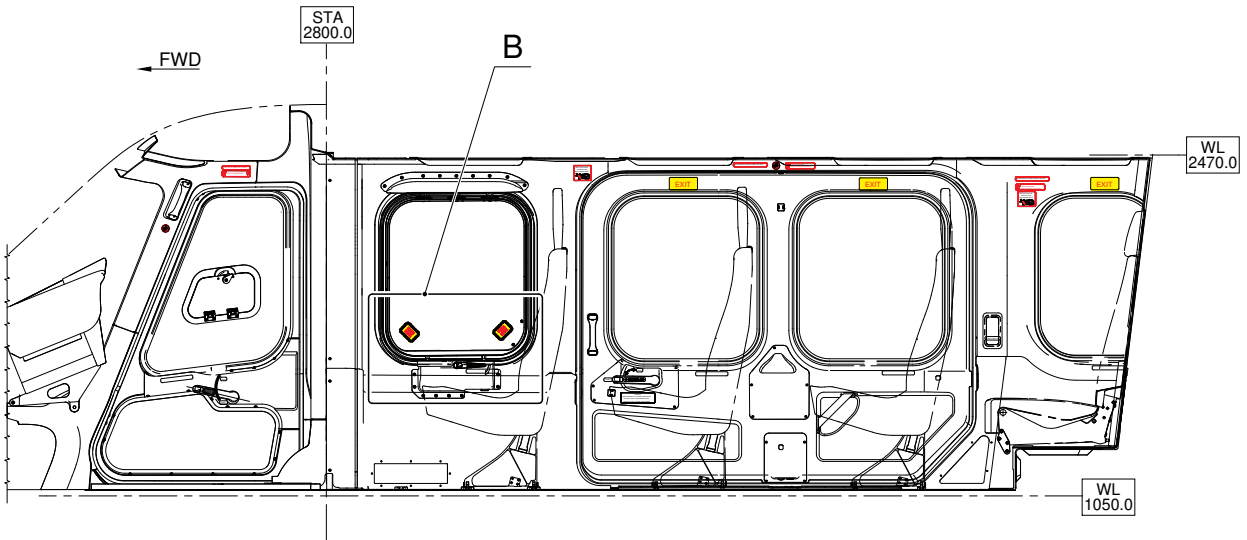


Figure 19



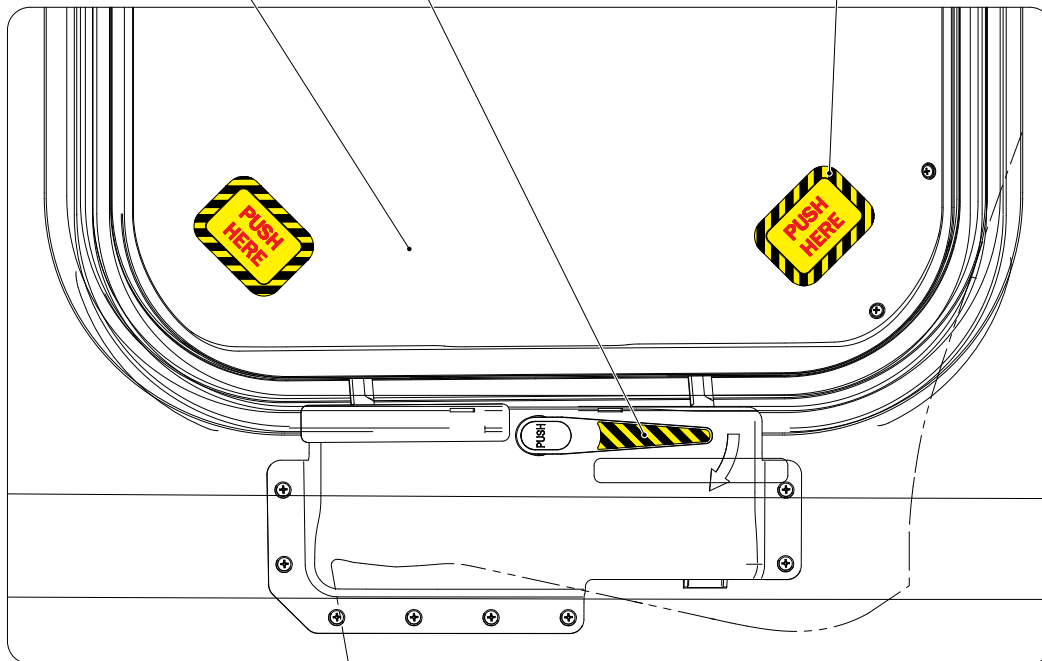
SIDE VIEW

LOOKING OUTBOARD RIGHT SIDE
STRUCTURES AND SYSTEMS ARE PARTIALLY
OMITTED FOR BETTER CLARITY PURPOSE

INSTALL:
8G1100A00851 RELEASE HANDLE MARK CS26
(1 PLACE ON LEFT SIDE)
(1 PLACE ON RIGHT SIDE)

INSTALL:
3G1130A27153 DECAL PUSH HERE CS26
(2 PLACES ON RIGHT SIDE BUBBLE WINDOW)
(2 PLACES ON LEFT SIDE BUBBLE WINDOW)

FORWARD CABIN WINDOW
(REF)



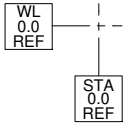
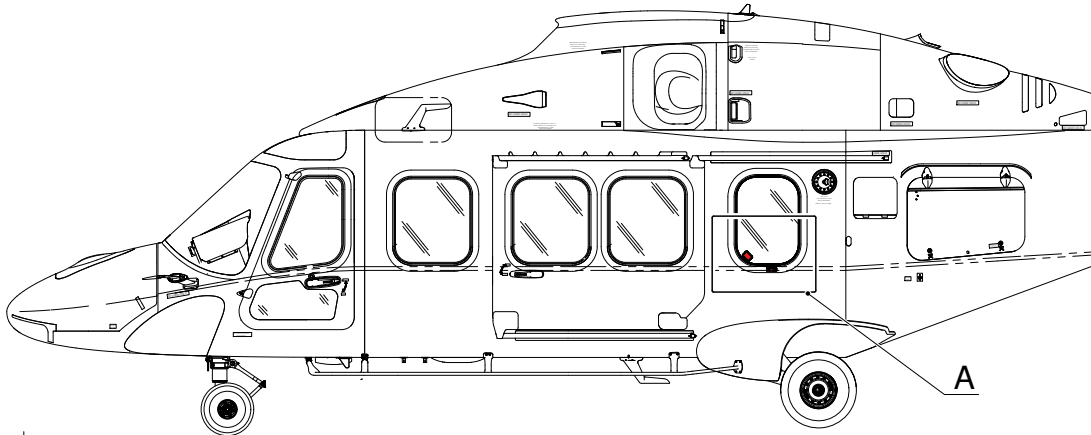
DETAIL B

(RIGHT SIDE SHOWN TYP LEFT SIDE)
STRUCTURES AND SYSTEMS ARE PARTIALLY
OMITTED FOR BETTER CLARITY PURPOSE

Figure 20

S.B. N°189-381 OPTIONAL
DATE: August 3, 2023
REVISION: /

**8G1100A00711
EXT/INT INSTALLATION
MARK CS26 4TH ROW STRAP
(APPLICABLE TO HELICOPTERS EQUIPPED WITH
4TH ROW EXTERNAL STRAP RETROMOD P/N 8G5620P00811)**



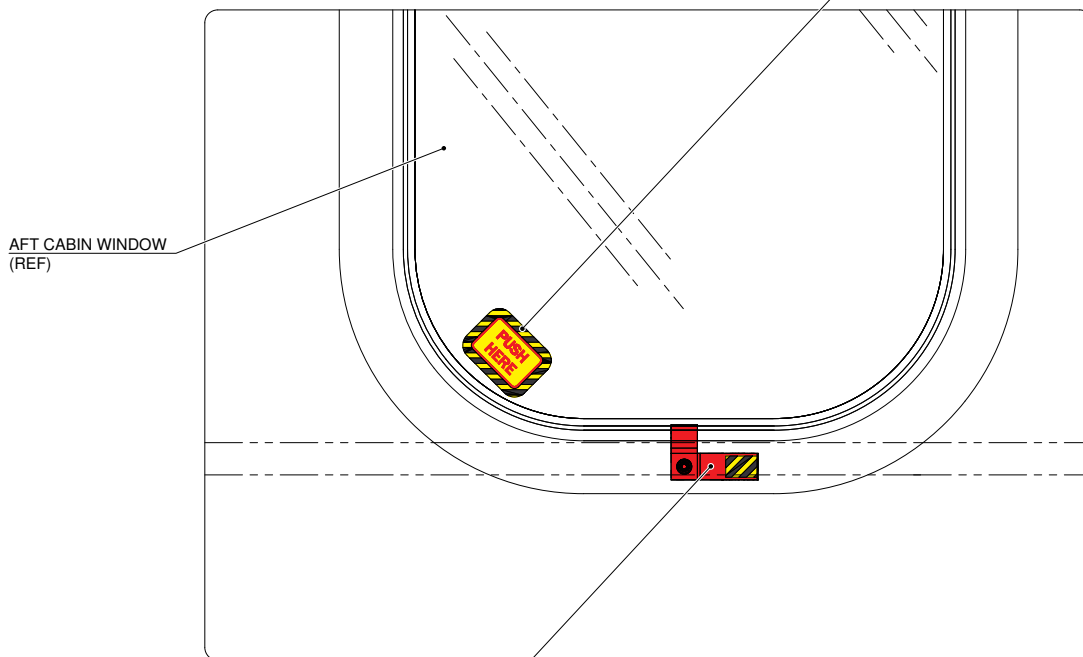
VIEW LOOKING INBOARD LEFT SIDE

STRUCTURES AND SYSTEMS ARE PARTIALLY
OMITTED FOR BETTER CLARITY PURPOSE

NOTE:

④ IN CASE THE PULL STRAP CS26 P/N 3G5211A14432 HAS NOT BEEN PROVIDED, DO NOT REMOVE THE EXISTING STRAP ASSEMBLY AND INSTALL THE DECAL CS26 PULL STRAP P/N 3G1130A27152 ACCORDING TO FIGURE 29.

A180A016E22 DECAL "PUSH HERE" (REF)
INSTALL:
3G1130A27153 DECAL "CS26 PUSH HERE"
(1 PLACE ON LEFT SIDE)
(1 PLACE ON RIGHT SIDE)



AFT CABIN WINDOW
(REF)

REMOVE:
④ A487A005A STRAP ASSEMBLY
OR ANY OTHER DIFFERENT BASIC VERSIONS
(1 PLACE ON LEFT SIDE)
(1 PLACE ON RIGHT SIDE)

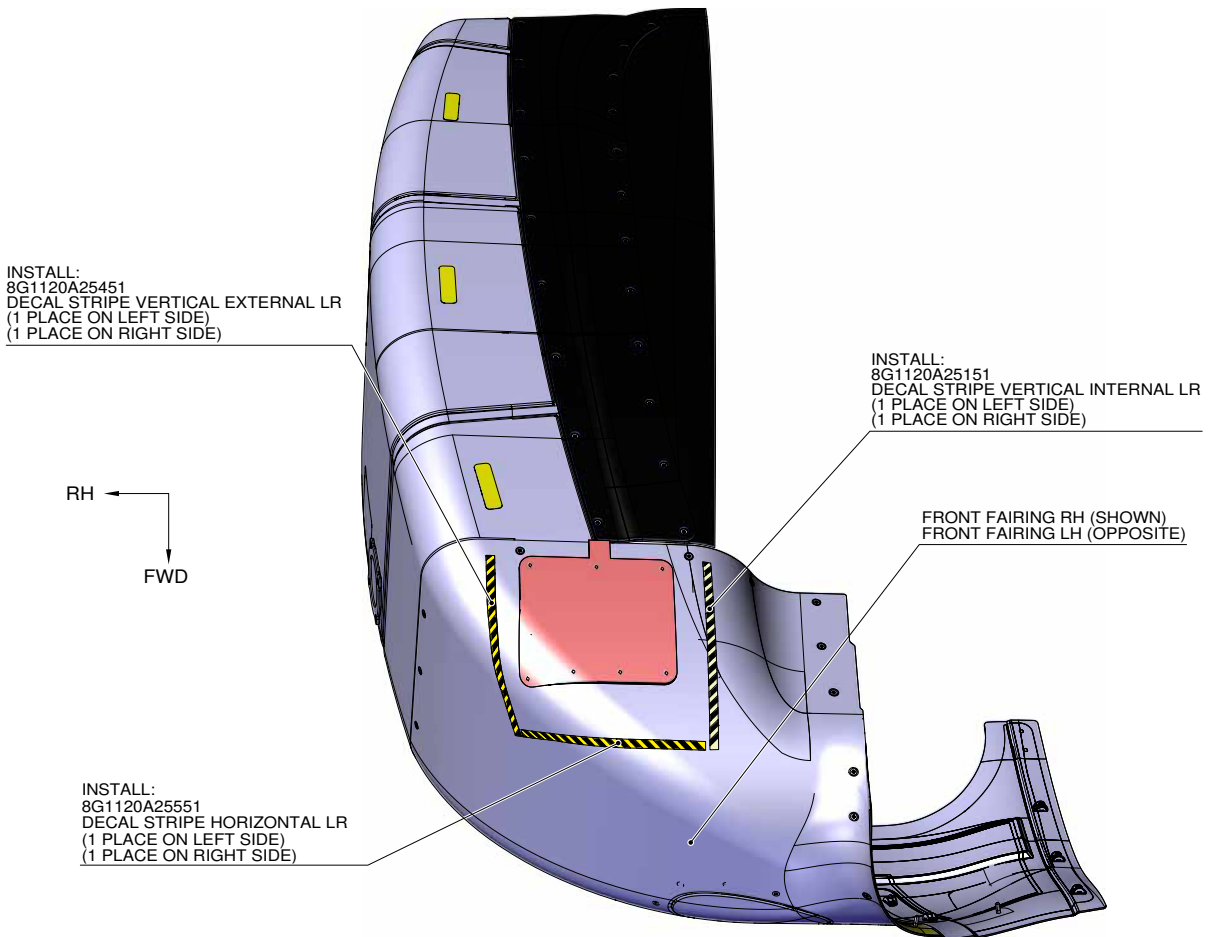
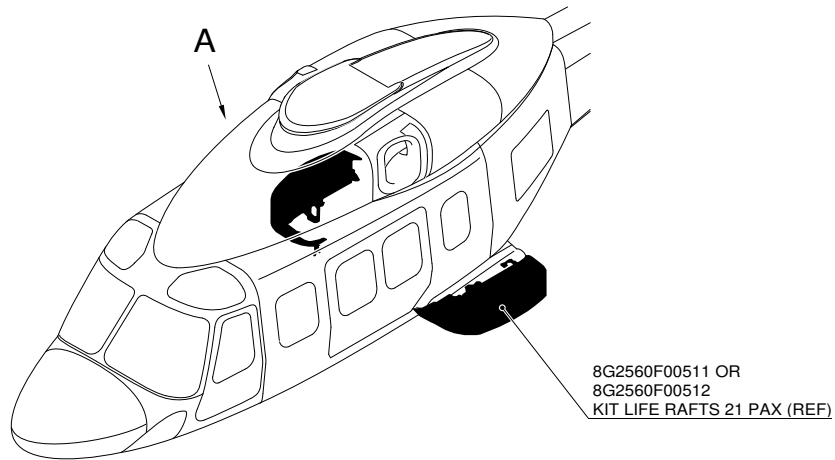
INSTALL:
④ 3G5211A14432 PULL STRAP CS 26
(1 PLACE ON LEFT SIDE)
(1 PLACE ON RIGHT SIDE)

DETAIL A

(LEFT SIDE SHOWN TYP RIGHT SIDE)
STRUCTURES AND SYSTEMS ARE PARTIALLY
OMITTED FOR BETTER CLARITY PURPOSE

Figure 21

8G1120A25011
EXTERNAL MARK KIT SPONSON LIFERAFT
CS26 INSTALLATION

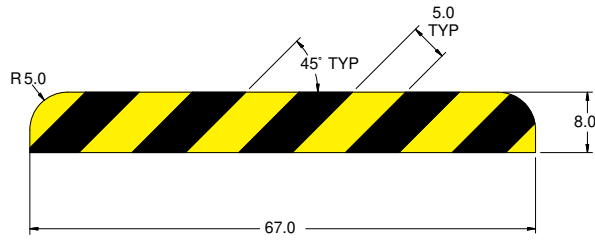


VIEW A
(RIGHT SIDE SHOWN TYP LEFT SIDE)
STRUCTURES AND SYSTEMS ARE PARTIALLY
OMITTED FOR BETTER CLARITY PURPOSE

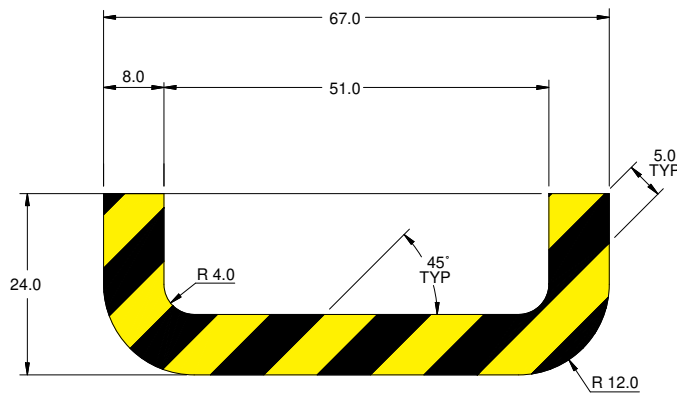
Figure 22

S.B. N°189-381 OPTIONAL
DATE: August 3, 2023
REVISION: /

8G1120A24851
EXT PULL TAB CS26 UP
MATERIAL A4 CS26 BLACK AND YELLOW P/N 3G1120A17351
SCALE 1:1



8G1120A24951
EXT PULL TAB CS26 LWR
MATERIAL A4 CS26 BLACK AND YELLOW P/N 3G1120A17351
SCALE 1:1



8G1130A53851
INT PULL TAB UP
MATERIAL A4 CS26 BLACK AND YELLOW P/N 3G1120A17351
SCALE 1:1

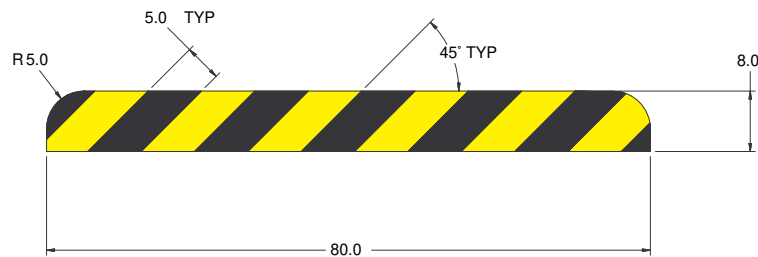
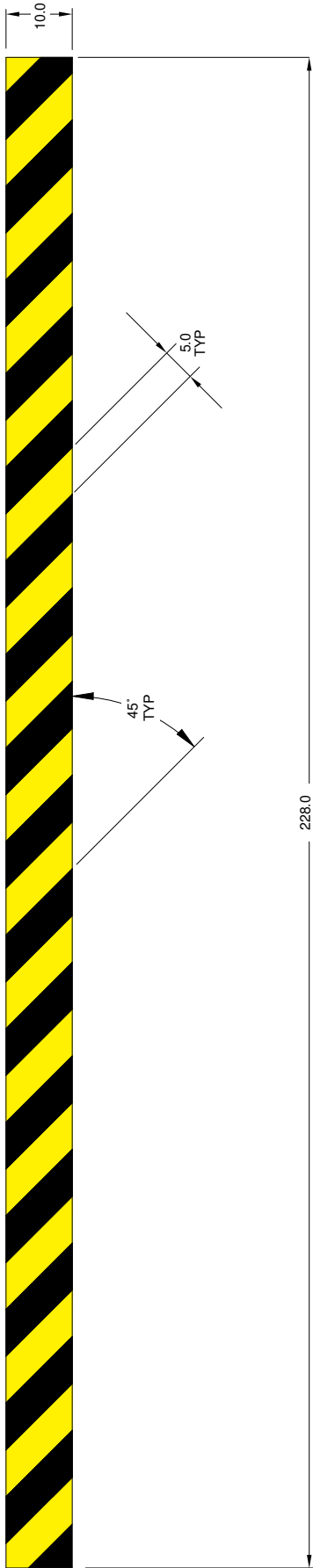


Figure 23

8G1120A25451
DECAL STRIPE VERTICAL EXTERNAL LR

MATERIAL A4 CS26 BLACK AND YELLOW P/N 3G1120A17351
SCALE 1:1



8G1120A25151
DECAL STRIPE VERTICAL INTERNAL LR

MATERIAL A4 CS26 BLACK AND YELLOW P/N 3G1120A17351
SCALE 1:1

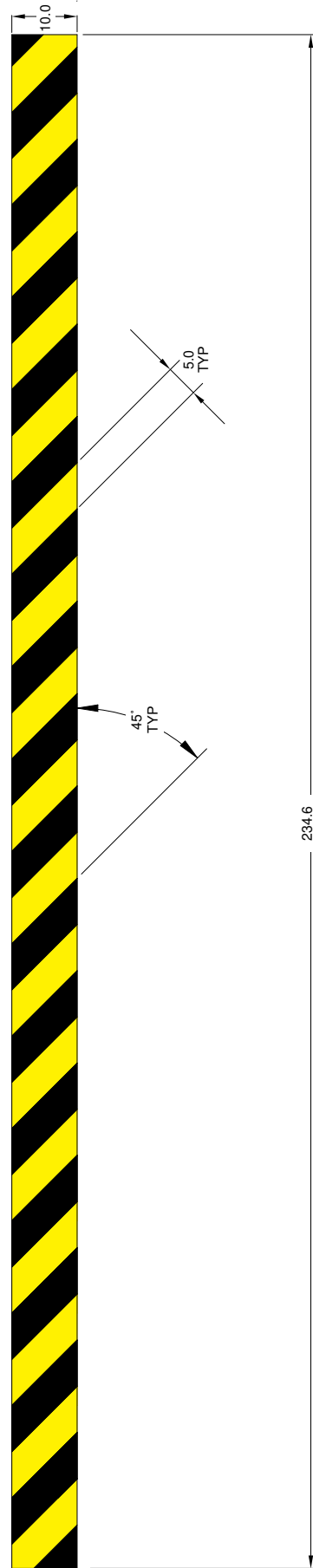


Figure 24

S.B. N°189-381 OPTIONAL
DATE: August 3, 2023
REVISION: /

8G1120A25251
WINDOW HANDLE LH
MATERIAL A4 CS26 BLACK AND YELLOW P/N 3G1120A17351
SCALE 1:1

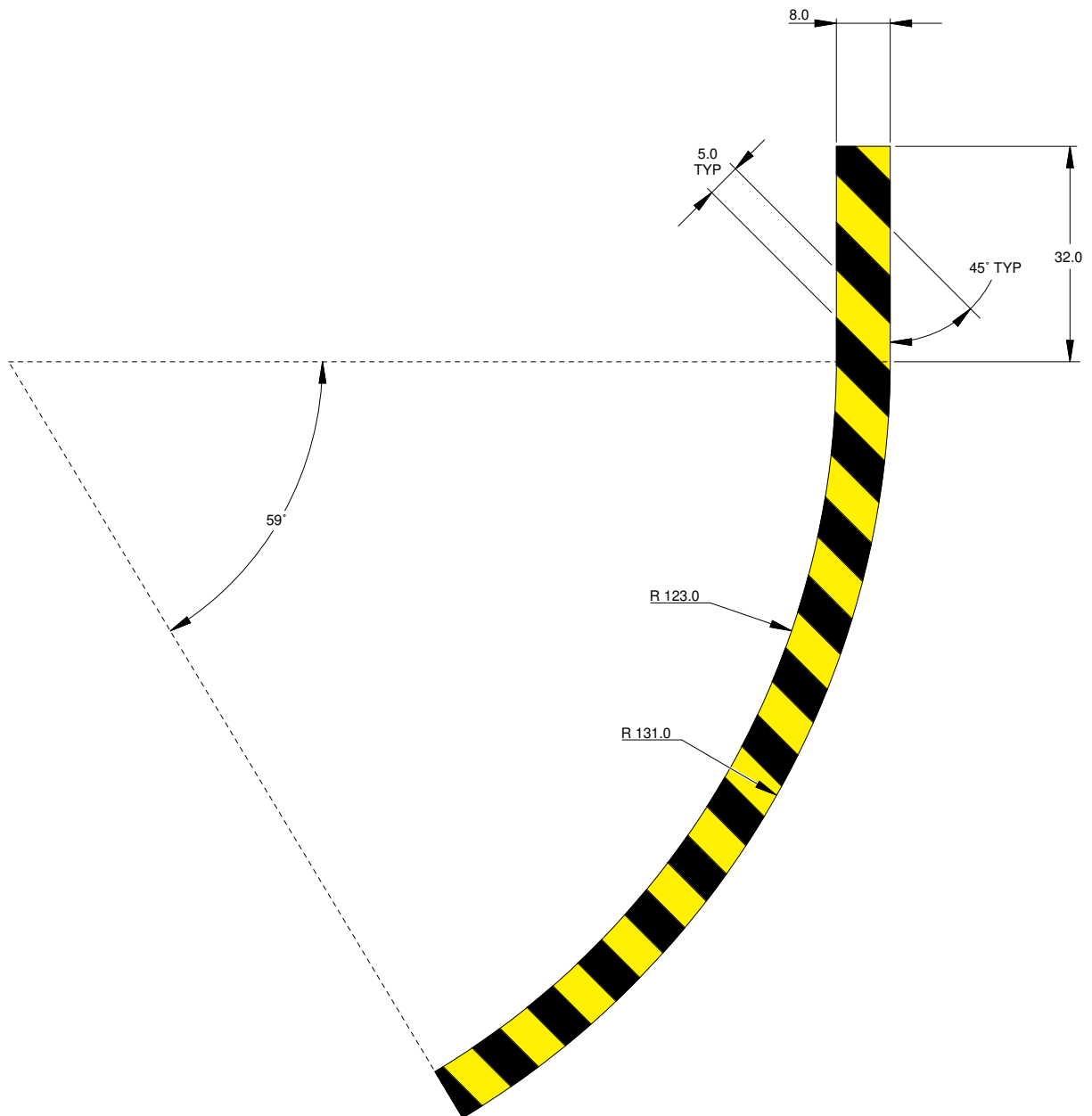


Figure 25

8G1120A25351
WINDOW HANDLE RH
MATERIAL A4 CS26 BLACK AND YELLOW P/N 3G1120A17351
SCALE 1:1

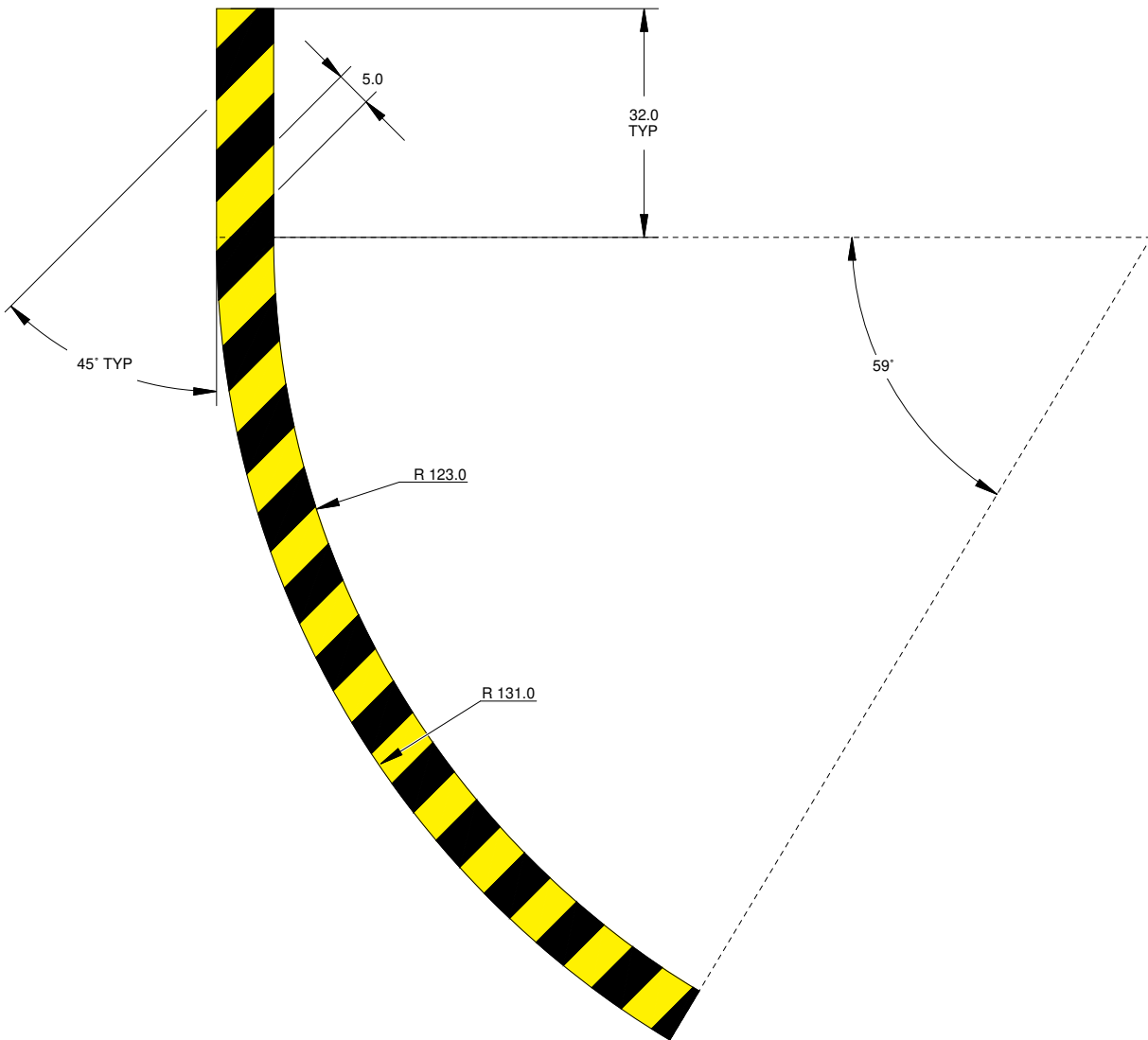


Figure 26

S.B. N°189-381 OPTIONAL
DATE: August 3, 2023
REVISION: /

8G1120A25551
DECAL STRIPE HORIZONTAL LR
MATERIAL A4 CS26 BLACK AND YELLOW P/N 3G1120A17351
SCALE 1:1

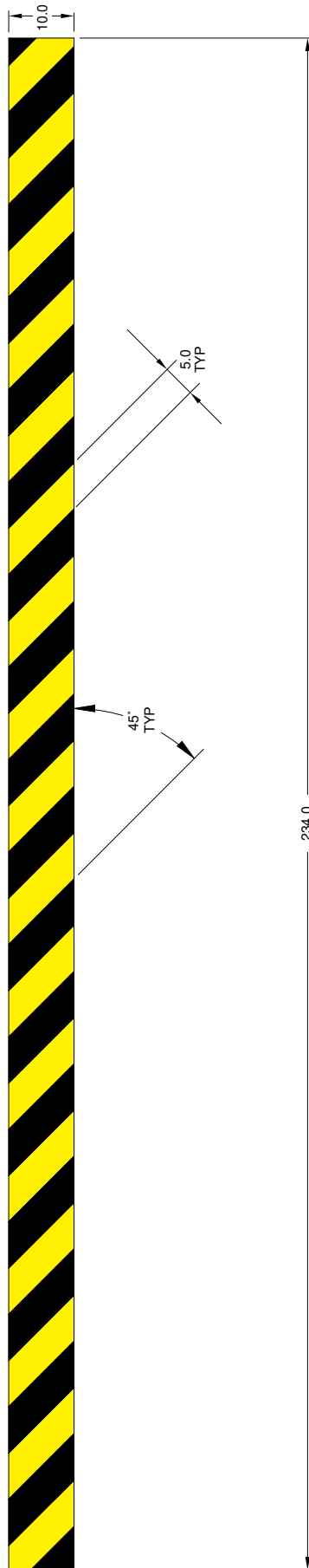
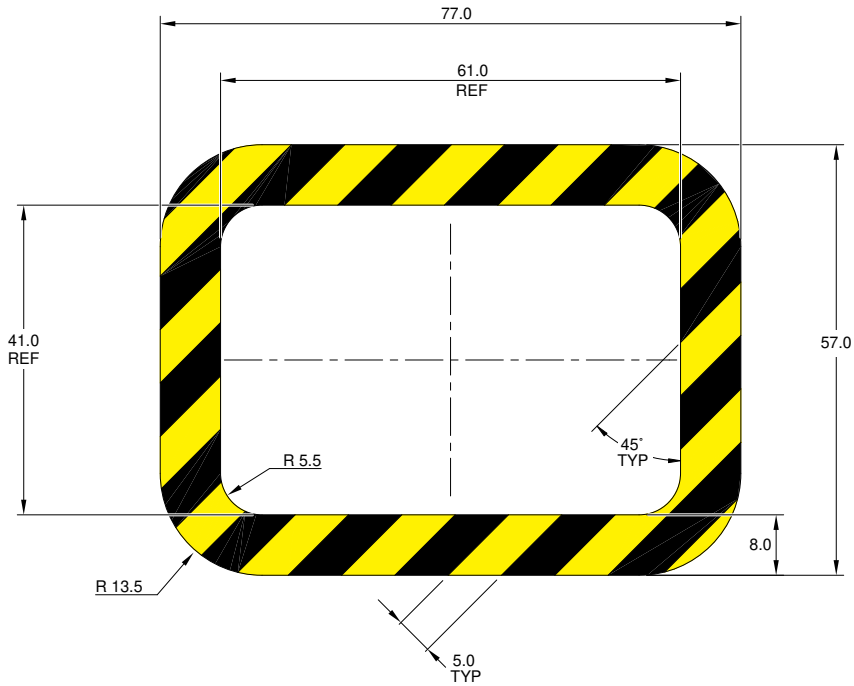


Figure 27

3G1130A27153
DECAL CS26 PUSH HERE
MATERIAL A4 CS26 BLACK AND YELLOW P/N 3G1120A17351
SCALE 1:1



3G1130A27152
DECAL CS26 PULL STRAP
MATERIAL A4 CS26 BLACK AND YELLOW 3M-DI-NOC P/N 3G1130A27451
SCALE 1:1

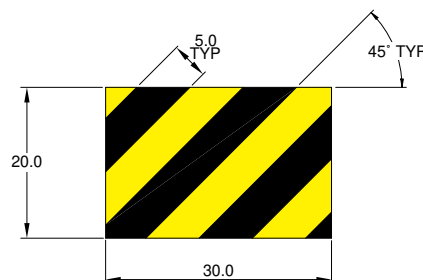
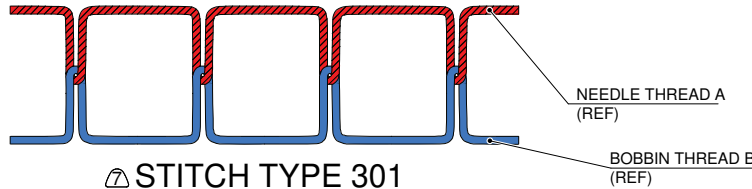


Figure 28

S.B. N°189-381 OPTIONAL
DATE: August 3, 2023
REVISION: /

NOTES:

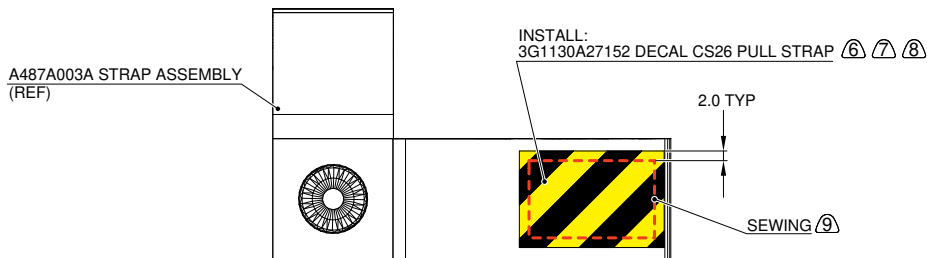
- ⑥ YARN, SYNTHETIC COMMERCIAL (8,0 KG MINIMUM BREAKING LOAD). COLOUR RED, No 31136 PER FED-STD-595.
- ⑦ ALL SEWING MUST BE DONE IN ACCORDANCE WITH THE SPECIFICATION ASTM D6193 TYPE 301, FROM 6 TO 8 STITCHES EVERY 25 mm.
- ⑧ INSTALL ON THE VISIBLE SIDE.
- ⑨ SEW ACCORDING TO THE SCHEME INDICATED.



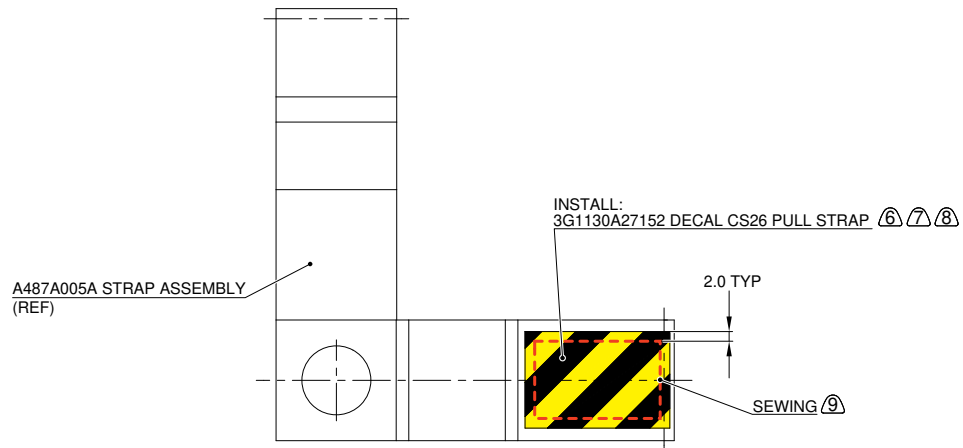
STITCH TYPE 301

THIS TYPE OF STITCH SHALL BE FORMED WITH TWO THREADS: ONE NEEDLE THREAD, A, AND ONE BOBBIN THREAD, B. A LOOP OF THREAD A SHALL BE PASSED THROUGH THE MATERIAL AND INTERLACED WITH THREAD B. THREAD A SHALL BE PULLED BACK SO THAT THE INTERLACING SHALL BE MIDWAY BETWEEN THE SURFACES OF THE MATERIALS BEING SEWN.

3G5211A14431 PULL STRAP CS26



3G5211A14432 PULL STRAP CS26 SIDE WALL



8G5212A23731 PULL STRAP CS26 REF A487A001A

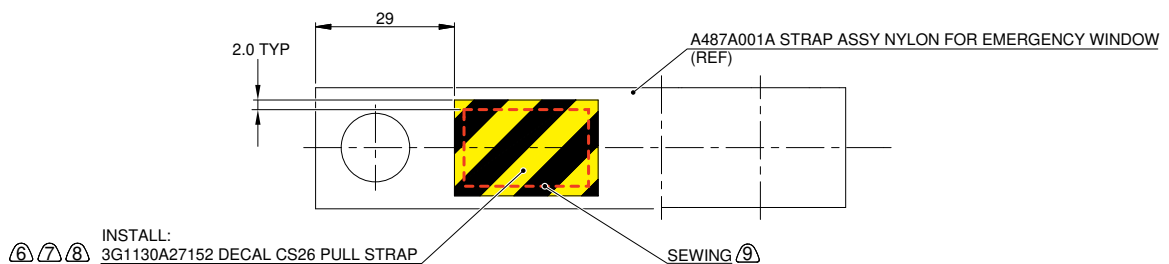


Figure 29

