

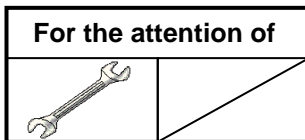
No. EC120-52-021

Civil version(s): B

SERVICE BULLETIN

PRODUCT IMPROVEMENT

DOORS - CARGO DOOR AND REAR ACCESS DOOR
New EC120 door lock key



Revision No.	Date of issue
Revision 0	2021-08-24

Summary:

The purpose of this Service Bulletin is to replace the lock key of the RH cargo door and the rear access door due to obsolescence.

Compliance:

It is the operator's decision to comply or not to comply with this Service Bulletin.

No. EC120-52-021

1. PLANNING INFORMATION



CAUTION

MAKE SURE THAT THE MODIFICATIONS RELATED TO THIS SERVICE BULLETIN AGREE WITH THE HELICOPTER CONFIGURATION AT THIS TIME. IF THE MODIFICATIONS DO NOT AGREE WITH THE HELICOPTER CONFIGURATION:

- PREPARE THE NECESSARY ADAPTATION WORK. THEN:
- GET THE APPROVAL BY THE APPLICABLE LOCAL AIR TRANSPORT AUTHORITIES.
- COMPLY WITH THE AIRWORTHINESS REQUIREMENTS.

THIS SERVICE BULLETIN IS WRITTEN FOR THE INITIAL HELICOPTER CONFIGURATION SPECIFIED IN THE INDIVIDUAL INSPECTION LOGBOOK (RIC). IT INCLUDES ONLY THE POST-DELIVERY CONFIGURATION CHANGES WHICH ARE KNOWN AND APPROVED BY AIRBUS HELICOPTERS.

1.A. EFFECTIVITY

1.A.1. Helicopters/installed equipment or parts

Helicopters with a rear access door P/N C523S4101053, RH cargo door P/N C523S1101053 and lock key P/N 7052A4523003 (DS9803002002).

NOTE

Refer to the Individual Inspection Log Book (RIC) and/or Aircraft Log Book to identify the current modification status of the helicopter.

1.A.2. Non-installed equipment or parts

Lock key P/N 7052A4523003 (DS9803002002)
Rear access door P/N C523S4101053
RH cargo door P/N C523S1101053

1.B. ASSOCIATED REQUIREMENTS



CAUTION

BEFORE YOU START THE WORK, MAKE SURE THAT YOUR MASTER SERVICING MANUAL (MSM) IS AT THE LAST UPDATE APPROVED BY THE APPLICABLE AUTHORITIES. REFER TO PARAGRAPH 3.D.

No. EC120-52-021

1.C. REASON

The purpose of this Service Bulletin is to replace the lock key of the RH cargo door and the rear access door due to obsolescence.

1.D. DESCRIPTION

This Service Bulletin consists in:

- Modifying the RH cargo door and the rear access door.
- Replacing the RH cargo door and the rear access door lock key.

1.E. COMPLIANCE

1.E.1. Compliance at H/C manufacturer level

Not applicable.

1.E.2. Compliance in service

Helicopters/installed equipment or parts:

The operator must do the work on the helicopter.

Comply with paragraph [3.](#) of this Service Bulletin.

Non-installed equipment or parts:

The operator must specify the level of stock related to the application of this Service Bulletin.

1.F. APPROVAL

Approval of modifications:

The information or instructions relate to modification COA08002 which was approved through CRD No. COA08002B on March 25, 2021 under the authority of EASA Design Organization Approval No. 21J.700 for civil version helicopters subject to an Airworthiness Certificate.



Approval of this document:

The technical information contained in this Service Bulletin Revision 0 was approved on April 14, 2021 under the authority of EASA Design Organization Approval No. 21J.700 for civil version helicopters subject to an Airworthiness Certificate.

No. EC120-52-021

1.G. MANPOWER



Airbus Helicopters recommends that the personnel who will do this Service Bulletin have this qualification:

Qualification:
1 Airframe Technician.



The man-hours are an estimate given for information only and for a standard helicopter configuration.

Estimated man-hours:
6 hours for the Airframe Technician.



The helicopter downtime is an estimate given for information only and for a standard helicopter configuration.

The estimate of the helicopter downtime is 1 day.

1.H. WEIGHT AND BALANCE



Weight: + 0.098 kg

Moment:
- Longitudinal: +0.507 m.kg
- Lateral: +0.018 m.kg.

After you complete the work, record the weight and moment in your applicable document.

1.I. POWER CONSUMPTION

Not applicable.

1.J. SOFTWARE UPGRADES/UPDATES

Not applicable.

1.K. REFERENCES

These documents are necessary to comply with this Service Bulletin:

Maintenance Manual:

AMM: 52-30-00,4-1: Removal - Lateral Cargo Hold Door
AMM: 52-30-00,4-2: Installation - Lateral Cargo Hold Door
AMM: 52-30-00,4-3: Removal / Installation - Rear Cargo Hold
AMM: 52-30-00,6-1: Condition Check - Cargo Doors

Practice Manual:

MTC: 20-02-05-404: Assembly by screws and nuts - Joining
MTC: 20-02-06-404: Instructions on safetying with split pins
MTC: 20-02-06-409: Instruction on safetying with Loctite compound - Safetying and locking assemblies
MTC: 20-03-01-101: General repair instructions: General
MTC: 20-04-04-401: Preparation of surfaces before painting - Surface treatment before painting
MTC: 20-04-05-101: Painting equipments and paint touch-ups - General - Paint and primer application procedure
MTC: 20-05-01-103: Equivalences and replacements of sealing compound - general sealing procedures

No. EC120-52-021

MTC: 20-06-01-101: Instructions on the general rules for bonding with adhesives
MTC: 20-06-01-102: Instructions on bonding method - Bonding with adhesives
MTC: 20-07-02-201: Helicopter parked in a repair shop - Safety instructions
MTC: 20-07-03-408: Appearance checks on an aircraft after inspection or repair - Technical instructions
MTC: 20-08-05-103: Monitoring of parts in operation - marking - service life customization - General rules applicable to aircraft

Notice Information:

IN: 3481-I-00: The Marketplace: an AirbusWorld eOrdering service
IN: 3643-I-00: Introduction of the digital Service Bulletin reporting R-Text

1.L. OTHER AFFECTED PUBLICATIONS



CAUTION

TO COMPLY WITH THIS SERVICE BULLETIN, THE OPERATOR MUST MAKE SURE THAT ALL THE MAINTENANCE DOCUMENTS NECESSARY FOR THE MAINTENANCE OF THIS INSTALLATION ARE AVAILABLE. IF THEY ARE NOT AVAILABLE, THE OPERATOR MUST CONTACT AIRBUS HELICOPTERS TO GET THESE DOCUMENTS.

The manuals shown below are updated with the modification:

- AMM (Aircraft Maintenance Manual)
- CMM (Comment Maintenance Manual)
- MSM (Master Servicing Manual).

You will receive the documents to which you subscribe.

Airbus Helicopters will update the IPC (Illustrated Parts Catalog) when the customer orders it.

1.M. PART INTERCHANGEABILITY OR MIXABILITY

Interchangeability:

PRE MOD and POST MOD components are not interchangeable.

Mixability:

You must not use PRE MOD and POST MOD components together.

No. EC120-52-021

2. EQUIPMENT OR PARTS INFORMATION

2.A. EQUIPMENT OR PARTS: PRICE - AVAILABILITY - PROCUREMENT

Price

For information about the price of the modification kits and/or components, or for aid, contact the Airbus Helicopters Network Sales and Customer Relations Department.

Availability

Contact the Sales and Customer Relations Department to know the delivery lead times.

Procurement

Send an order for the necessary quantities to the Airbus Helicopters Network Sales and Customer Relations Department:

Airbus Helicopters
Etablissement de Marignane
Direction Ventes et Relations Client
13725 MARIIGNANE CEDEX
FRANCE

NOTE

In the purchase order, write the information that follows:

- *The mode of transport*
- *The destination*
- *The serial numbers of the helicopters to change.*

2.B. LOGISTIC INFORMATION

Not applicable.

2.C. EQUIPMENT OR PARTS REQUIRED PER HELICOPTER/COMPONENT

Equipment or parts to be ordered separately:

Key Word	Qty	New P/N	Item	Old P/N →	Instruction
Lock key	2	HA2423-1 (706A31610026)	1	DS9803002002 (7052A4523003)	Discard
Split pin	ref	For reference only	1a		For ref only
Nut	ref	For reference only	1b		For ref only
Pin, locking	2	365A25-8446-20	2		
Washer	2	C523A1101204	3		

No. EC120-52-021

Consumables to be ordered separately:

As per Work Cards and Tasks specified in this Service Bulletin and the list below or equivalent:

Key Word	Qty	Consumables P/N	CM	Item
Adhesive Loctite	0.2 kg	ASNA4018	683	4
Sealing compound	0.2 kg	ASNA4168AF17	6029	5

You can order the consumables from the AirbusWorld Marketplace through e-ordering (IN 3481-I-00). If you can't get access to e-ordering, please contact your Logistic Focal Point.

Special tools:

As per Work Cards and Tasks specified in this Service Bulletin or equivalent.

2.D. EQUIPMENT OR PARTS TO BE RETURNED

Not applicable.

No. EC120-52-021

3. ACCOMPLISHMENT INSTRUCTIONS

3.A. GENERAL

- As per Work Card 20-02-06-404 (MTC), read and comply with the instructions on safetying with split pins.
- As per Work Card 20-02-06-409 (MTC), read and comply with the instruction on safetying with Loctite compound.
- As per Work Card 20-03-01-101 (MTC), read and comply general instructions on structure repair.
- As per Work Card 20-06-01-101 (MTC), read and comply with the instructions on the general rules for bonding with adhesives.
- As per Work Card 20-06-01-102 (MTC), read and comply with the instructions on bonding method.
- As per Work Card 20-07-02-201 (MTC), read and comply with the instructions on parking helicopters.

Unless otherwise stated, tighten the screws to standard torque as per Work Card 20-02-05-404 (MTC).

3.B. WORK STEPS

3.B.1. Preliminary steps

- Park the helicopter in a maintenance hangar.
- Install appropriate access equipment.
- Remove and/or open all applicable cowlings, panels, doors and other items of equipment to get access to the different work areas.

3.B.2. Procedure

NOTE 1

Cutouts and drilling: deburring and protection as per Work Card 20-04-04-401 (MTC).

3.B.2.a. Modification of the RH cargo door and rear access door (Figure 1, Figure 2)

Only the assembly for the RH cargo door (a) is given. Do the same procedure for the rear access door (d) with the cutout (B) and as per Task 52-30-00,4-3 (AMM) ([Figure 2](#)).

As per [Figure 1](#)

- Remove the RH cargo door (a) as per Task 52-30-00,4-1 (AMM).
- On the cargo door RH (a) (Details A and B):
 - . Remove the lock key (b).
 - . Discard the lock key (b).
 - . Identify the cutout (A) as per dimensions (Detail C).
 - . Do the cutout (A).
 - . Apply adhesive (4) in the nut (1b).
 - . Install the lock key (1) with interposition of sealing compound (5) (Detail B) with:
 - .. A washer (3)
 - .. The nut (1b).
 - . Torque the nut (1b) to the indicated torque value.
 - . Install the pin locking (2) on the lock key (1) with the split pin (1a) (Detail B).
 - . Identify again the RH cargo door (a) as per paragraph [3.C.](#) (Detail A).

NOTE 2

*In case of painting touch up following this installation:
Work Card 20-04-05-101 (MTC).*

No. EC120-52-021

3.B.3. Final steps

- Do a check on the cargo doors as per Task 52-30-00,6-1 (AMM).
- Clean and recondition the work zones and the helicopter as per Work Card 20-07-03-408 (MTC).
- Install or close all cowlings, panels, doors and items of equipment that you removed and/or opened during the preliminary steps (paragraph [3.B.1.](#) of this Service Bulletin).
- Remove the access means.
- Set the helicopter to flight condition.

3.C. RECORD OF COMPLIANCE

Compliance with this document:

Record the full compliance with this Service Bulletin, with the revision number, in the helicopter documents.

Record compliance with this Service Bulletin (see IN 3643-I-00 for instructions):

QR code or hypertext link



NOTE 3

The recording of compliance with Service Bulletins in the R-Text tool does not replace the recording in the helicopter documents.

[SB EC120 52-021](#)

Identification of modifications on equipment or parts:

Identify the RH cargo door and the rear access door as per table below and as per Work Card 20-08-05-103 (MTC).

Key Word	Old P/N	New P/N	MOD	Marking of type
Rear access door	C523S4101053	Old P/N + SB No. 52-021	Service Bulletin No. 52-021	Indelible ink
RH cargo door	C523S1101053	Old P/N + SB No. 52-021	Service Bulletin No. 52-021	Indelible ink

3.D. OPERATING AND MAINTENANCE INSTRUCTIONS

Operating instructions:

Not applicable.

Maintenance instructions:

Refer to Master Servicing Manual (MSM).

Refer to Aircraft Maintenance Manual (AMM).

PAGE INTENTIONALLY LEFT BLANK

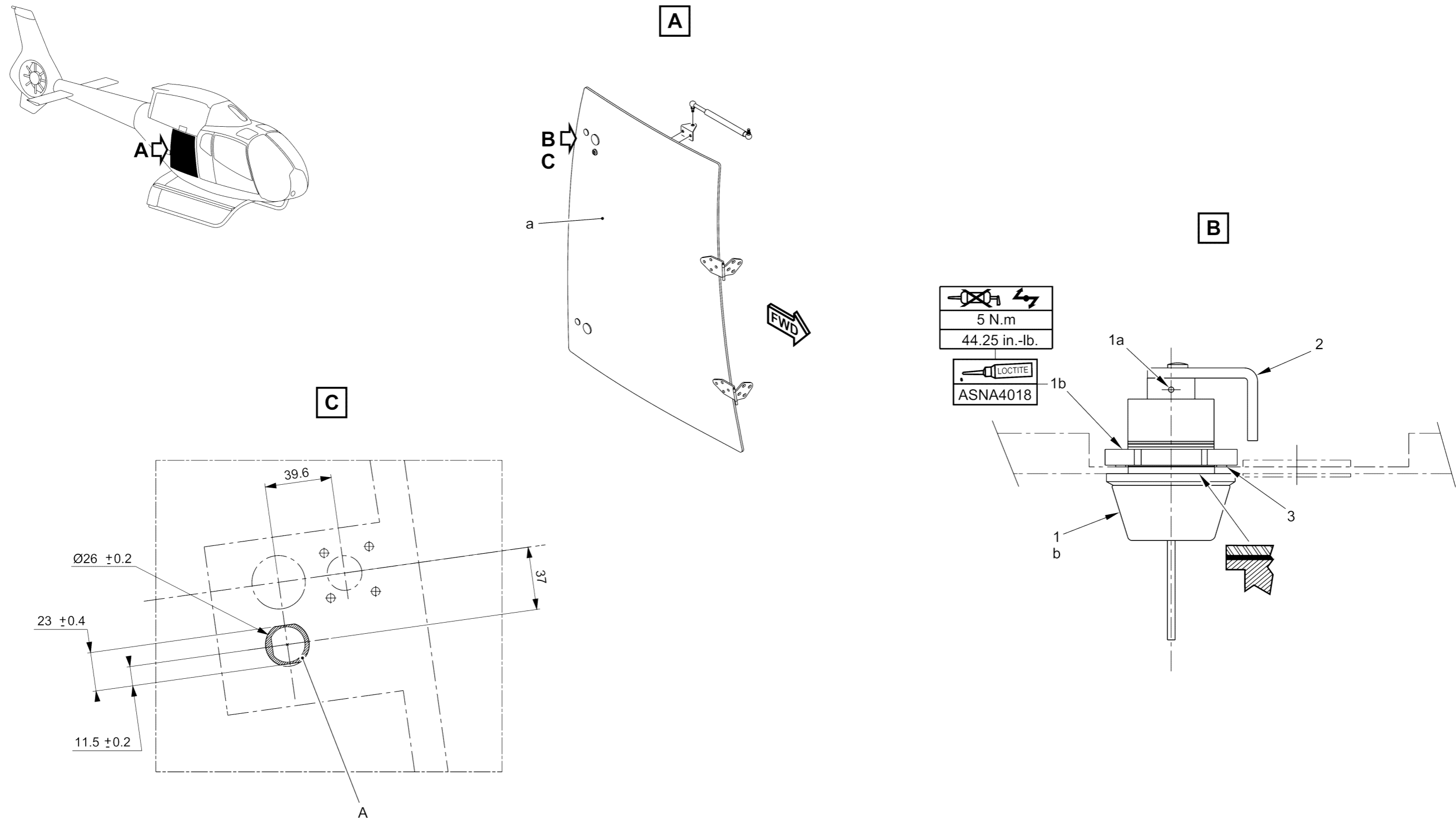


Figure 1

Return to paragraph [3.B.2.a.](#)

PAGE INTENTIONALLY LEFT BLANK

No. EC120-52-021

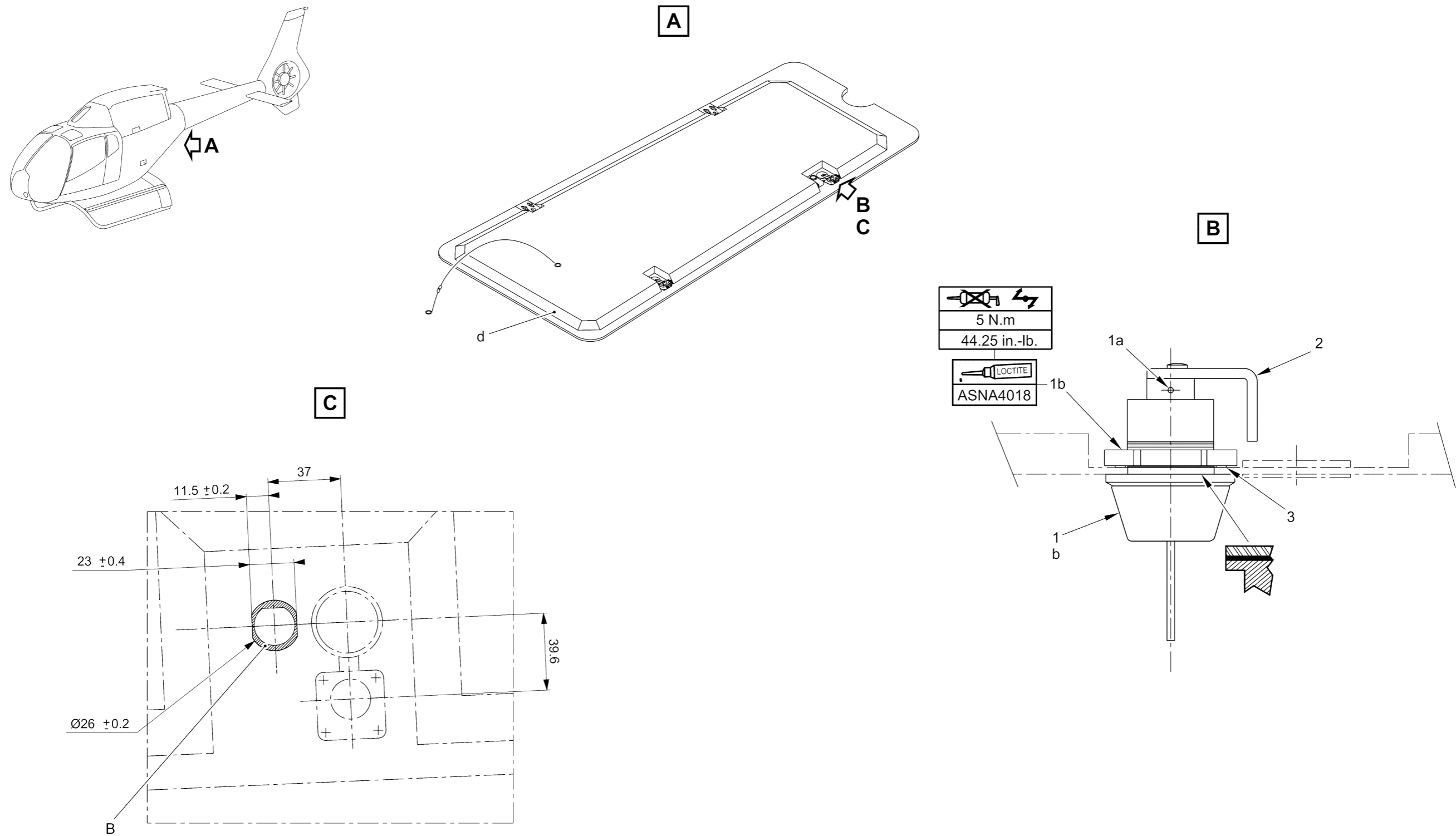


Figure 2

Return to paragraph [3.B.2.a.](#)