
SERVICE BULLETIN

N° **139-754**

EMERGENCY ALERT

DATE: March 31, 2023

REV. : /

TITLE

ATA 62 – MAIN ROTOR (MR) PITCH LINK UPPER ROD END ASSY INSPECTION

REVISION LOG

First Issue

An appropriate entry should be made in the aircraft log book upon accomplishment.
If ownership of aircraft has changed, please, forward to new owner.

1. PLANNING INFORMATION

A. EFFECTIVITY

WARNING

FOR MR PITCH LINK UPPER ROD END ASSY S/N, STARTING WITH MCR AND HAVING ONLY FOUR DIGITS, CONSIDER THE FOLLOWING:

TO IDENTIFY IF THE S/N IS AFFECTED COMPARE ITS FOUR DIGITS WITH THE LAST FOUR DIGITS OF THE S/N's REPORTED IN ANNEX A STARTING WITH "MCR0"

EXAMPLE:

IF INSTALLED S/N IS MCR8709 AND S/N REPORTED IN ANNEX A IS MCR08709 THE SERVICE BULLETIN IS APPLICABLE.

Part I

MR pitch link upper rod end assy P/N 3G6230A01133 with S/N reported in Annex A and not marked with letter "R" (ref. Figure 5) installed on AB/AW139 helicopters.

Part II

- All pitch link assy P/N 3G6230A01033 equipped with an upper rod end assy P/N 3G6230A01133 with S/N reported in Annex A and not marked with letter "R" (ref. Figure 5) kept in stock.
- All upper rod end assy P/N 3G6230A01133 with S/N reported in Annex A and not marked with letter "R" (ref. Figure 5) kept in stock.

Part III

MR pitch link upper rod end assy P/N 3G6230A01133 with S/N reported in Annex A and not marked with letter "R" (ref. Figure 5) installed on AB/AW139 helicopters that have passed the check performed in accordance with Part I of this Service Bulletin.

B. COMPLIANCE

Part I

Before the next flight.

Part II

Before the installation on the helicopter.

Part III

In occasion of the next removal of pitch link assy P/N 3G6230A01033 or not later than 25 flight hours, whichever occurs first, after application of Part I of this Service Bulletin.

C. CONCURRENT REQUIREMENTS

N.A.

D. REASON

Following one case of incorrect installation of the bearing in MR pitch link upper rod end assy P/N 3G6230A01133, this Service Bulletin is issued in order to provide the necessary instructions to identify a batch of S/N potentially affected and to replace them.

E. DESCRIPTION

Part I of this Service Bulletin prescribes a one-off inspection of MR pitch link upper rod end assy P/N 3G6230A01133, installed on the helicopter, to check the presence of gap between MR pitch link upper rod end assy bearing and pitch control lever assy. In case gap is detected, the affected upper rod end assy shall be replaced with a serviceable one.

Part II of this Service Bulletin prescribes a one-off inspection of MR pitch link upper rod end assy P/N 3G6230A01133, kept in stock, or installed on MR pitch link assy P/N 3G6230A01033, kept in stock, to check the dimension of the bearing installed in the upper rod end assy. This Part, also, prescribes to remark the inspected upper rod end assy S/N, in case that dimensional check had positive response.

Part III of this Service Bulletin prescribes to remark the S/N of the upper rod end assy P/N 3G6230A01133, that have passed the inspection performed in accordance with Part I of this Service Bulletin.

F. APPROVAL

The technical content of this Service Bulletin is approved under the authority of DOA nr. EASA.21.J.005. For helicopters registered under other Aviation Authorities, before applying the Service Bulletin, applicable Aviation Authority approval must be checked within Leonardo Helicopters customer portal.

EASA states mandatory compliance with inspections, modifications or technical directives and related time of compliance by means of relevant Airworthiness Directives. If an aircraft listed in the effectivity embodies a modification or repair not LHD certified and affecting the content of this Service Bulletin, it is responsibility of the

Owner/Operator to obtain a formal approval by Aviation Authority having jurisdiction on the aircraft, for any adaptation necessary before incorporation of the present Service Bulletin.

G. MANPOWER

To comply with this Service Bulletin, the following MMH are deemed necessary:

Part I: 1 (one) MMH;

Part II: 1 (one) MMH;

Part III: 1 (one) MMH.

MMH are based on hands-on time and can change with personnel and facilities available.

H. WEIGHT AND BALANCE

N.A.

I. REFERENCES

1) PUBLICATIONS

Following Data Modules refer to AMP:

<u>DATA MODULE</u>	<u>DESCRIPTION</u>	<u>PART</u>
DM01 39-A-00-20-00-00A-120A-A	Helicopter on ground for a safe maintenance.	I
DM02 39-A-62-31-01-01A-921A-B	Rod ends (pitch link) - Replacement (remove and install a new item)	I
DM03 39-A-62-31-01-00A-520A-A	Pitch link - Remove procedure	III
DM04 39-A-62-31-01-00A-720A-A	Pitch link - Install procedure	III

2) ACRONYMS & ABBREVIATIONS

AMDI	Aircraft Material Data Information
AMP	Aircraft Maintenance Publication
DM	Data Module
DOA	Design Organization Approval
EASA	European Aviation Safety Agency
LHD	Leonardo Helicopters Division
MMH	Maintenance Man Hours
MR	Main Rotor
P/N	Part Number
SB	Service Bulletin

S/N Serial Number

3) ANNEX

Annex A SB applicability list - Upper Rod End Assy S/N

J. PUBLICATIONS AFFECTED

N.A.

K. SOFTWARE ACCOMPLISHMENT SUMMARY

N.A.

2. MATERIAL INFORMATION

A. REQUIRED MATERIALS

1) PARTS

PART I AND PART II

#	P/N	ALTERNATIVE P/N	DESCRIPTION	Q.TY	LVL	NOTE	LOG P/N
1	3G6230A01133		Upper Rod End Assy	AR	.	(1)	-
2	3G6230A01033		Pitch Link Assy	AR	.	(1)	-

PART III

N.A.

Refer also to IPD for the spares materials required to comply with the AMP DMs referenced in the accomplishment instructions.

2) CONSUMABLES

#	SPEC./LHD CODE NUMBER	DESCRIPTION	Q.TY	NOTE	PART
3	Commercial	Soft lint-free cloth (C011)	AR	(2)	I
4	Commercial	Marker	AR	(2)	II, III
5	MIL-L-81352C or MIL-PRF-85285 Type I Class H	Transparent coating	AR	(2)	II, III

Refer also to AMDI for the consumable materials required to comply with the AMP DM referenced in the accomplishment instructions.

3) LOGISTIC MATRIX

N.A.

NOTE

- (1) Item to be ordered in quantity only if the component must be replaced;
- (2) Item to be procured as local supply.

B. SPECIAL TOOLS

#	P/N	DESCRIPTION	Q.TY	NOTE	PART
6	Commercial	Feeler gauge of 0,5 mm	1	(B1)	I
7	Commercial	Caliper / Gauge	1	(B1)	II

Refer also to ITEP for the special tools required to comply with the AMP DM referenced in the accomplishment instructions.

SPECIAL TOOLS NOTE

- (B1) Item to be procured as local supply.

C. INDUSTRY SUPPORT INFORMATION

Owners/operators who comply with the instructions of this service bulletin no later than the applicable date in the “Compliance” section will be eligible to receive required materials on free of charge basis, except for consumable materials and special tools.

NOTE: Customers who fail to comply with the instructions in this service bulletin before the compliance date are not eligible for the aforementioned special policy.

Please Issue relevant MMIR form to your Warranty Administration Dpt. including the Inspection Report in Figure 6, completed in every part.

NOTE: WRM will include RETURN MATERIAL AUTHORIZATION (RMA) number; the upper rod end assy P/N 3G6230A01133 disembarked from the aircraft has to be returned to LHD within fifteen (15) calendar days after the shipment of the replacement part. In case of missing return within fifteen (15) calendar days, Customer will be invoiced for the price of the replacement part.

3. ACCOMPLISHMENT INSTRUCTIONS

GENERAL NOTES

- a) Place an identification tag on all components that are re-usable, including the attaching hardware that has been removed to gain access to the modification area and adequately protect them until their later re-use.
- b) Exposed thread surface and nut must be protected using a layer of tectyl according to MIL-C-16173 grade I.
- c) All lengths are in mm.

PART I

1. In accordance with AMP DM 39-A-00-20-00-00A-120A-A, prepare the helicopter on ground for a safe maintenance. Disconnect the battery, all electrical power sources and/or the external power supply.

NOTE

Perform the following steps on all MR pitch link upper rod end P/N 3G6230A01133 installed on helicopter

2. With reference to Figure 1 thru Figure 3, perform the inspection of the upper rod end assy P/N 3G6230A01133 according to the following procedure:
 - 2.1 Using a soft lint-free cloth clean the upper rod end assy bearing, bolt and pitch lever assy, to remove any residual;
 - 2.2 According to Figure 1 Section A-A, using a feeler gauge of 0,5 mm, verify the presence of gap between the MR pitch link upper rod end assy bearing and the pitch control lever assy, on both sides:
 - 2.2.1 If the gap is present on both sides or one side, as shown in Figure 2, in accordance with AMP DM 39-A-62-31-01-01A-921A-B, replace the upper rod end assy P/N 3G6230A01133 with a serviceable one. Compile the Inspection Report in Figure 6 and contact LHD before the return to flight.
Send the affected upper rod end assy to LHD.
 - 2.2.2 If there is no gap, as shown in Figure 3, proceed to step 3 and apply Part III of this Service Bulletin in accordance with compliance time reported in paragraph 1.B of this Service Bulletin.

3. Return the helicopter to flight configuration and record for compliance with Part I of this Service Bulletin on the helicopter logbook.
4. Gain access to My Communications section on Leonardo WebPortal and compile the "Service Bulletin Application Communication".

As an alternative, send the attached compliance form to the following mail box:

engineering.support.lhd@leonardo.com

and (for North, Central and South America) also to:

AWPC.Engineering.Support@leonardocompany.us

PART II

1. With reference to Figure 4, perform the inspection of the upper rod end assy P/N 3G6230A01133 according to the following procedure:
 - 1.1 According to Figure 4 Detail B, using a caliper / gauge, check the dimension “X” of the bearing installed in the upper rod end assy.
 - 1.2 If the dimension X is within the interval 38,05 - 38,10 mm, remark the upper rod end assy S/N as follow:

NOTE

Any color of permanent marker is allowed as long as it is clearly visible.

- 1.2.1 Mark the letter “R” near the upper rod end assy S/N as shown in Figure 5, by means of a permanent marker covered by a layer of transparent coating MIL-L-81352C or MIL-PRF-85285 Type I Class H.
 - 1.2.2 Update the S/N of the upper rod end assy on the pitch link assy P/N 3G6230A01033 Log Card, as applicable.
 - 1.3 If the measurement is outside the interval 38,05 - 38,10 mm, compile the Inspection Report in Figure 6 and send the affected part to LHD.
2. Gain access to My Communications section on Leonardo WebPortal and compile the “Service Bulletin Application Communication”.

As an alternative, send the attached compliance form to the following mail box:

engineering.support.lhd@leonardo.com

and (for North, Central and South America) also to:

AWPC.Engineering.Support@leonardocompany.us

PART III

NOTE

Based on the position of the upper rod end S/N marked on the component, if necessary, in accordance with AMP DM 39-A-62-31-01-00A-520A-A, remove pitch link assy P/N 3G6230A01033 from the helicopter.

1. Gain access to the MR pitch link upper rod end assy P/N 3G6230A01133 and remark the S/N as follow:

NOTE

Any color of permanent marker is allowed as long as it is clearly visible.

- 1.1 Mark the letter "R" near the upper rod end assy S/N as shown in Figure 5, by means of a permanent marker covered by a layer of transparent coating MIL-L-81352C or MIL-PRF-85285 Type I Class H.
- 1.2 Update the S/N of the upper rod end assy on the pitch link assy P/N 3G6230A01033 Log Card, as applicable.

NOTE

If necessary, in accordance with AMP DM 39-A-62-31-01-00A-720A-A, install pitch link assy P/N 3G6230A01033 on the helicopter.

2. Return the helicopter to flight configuration and record for compliance with Part III of this Service Bulletin on the helicopter logbook.
3. Gain access to My Communications section on Leonardo WebPortal and compile the "Service Bulletin Application Communication".

As an alternative, send the attached compliance form to the following mail box:

engineering.support.lhd@leonardo.com

and (for North, Central and South America) also to:

AWPC.Engineering.Support@leonardocompany.us

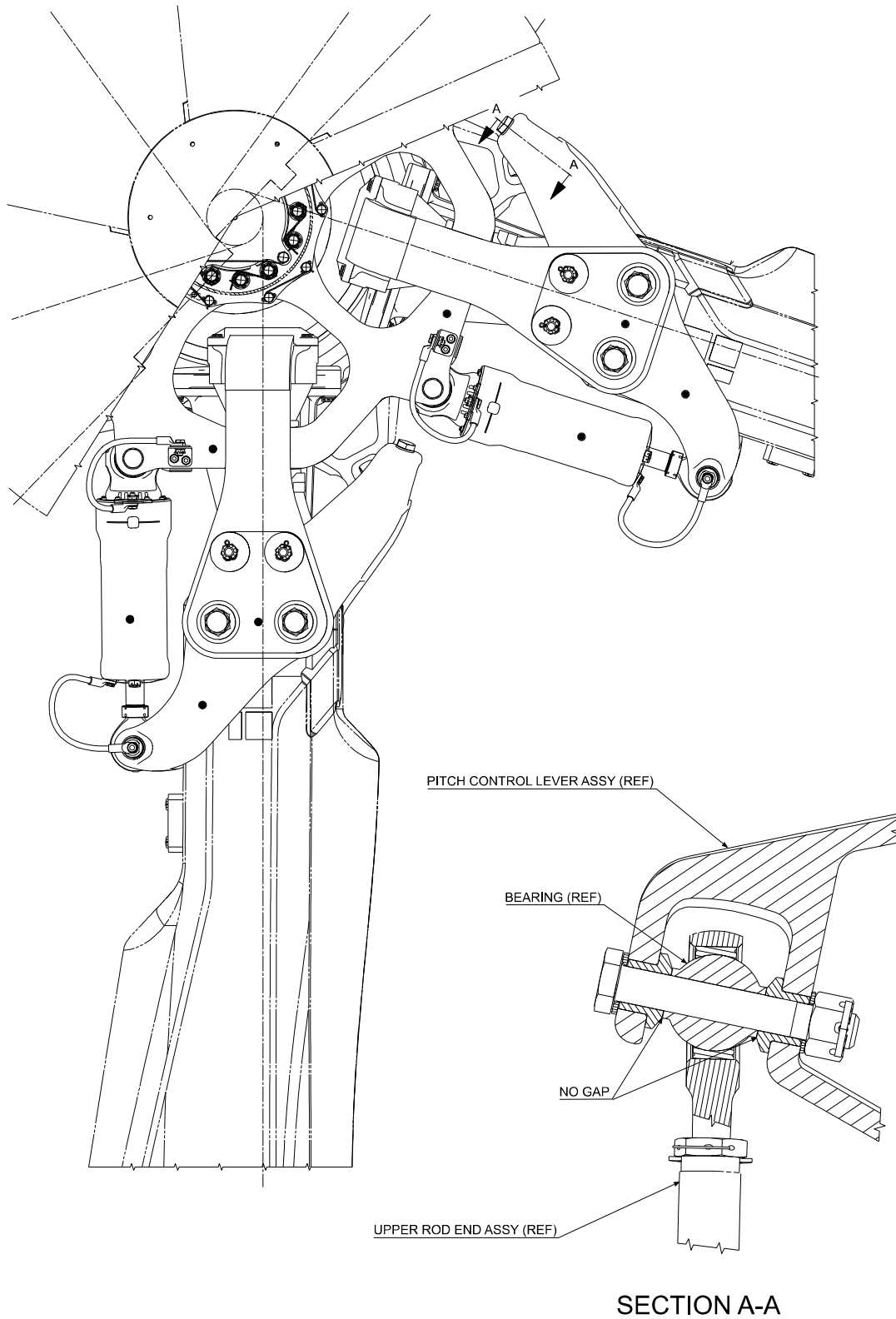


Figure 1

S.B. N°139-754 EMERGENCY ALERT
DATE: March 31, 2023
REVISION: /



GAP PRESENT

FOR REFERENCE ONLY

Figure 2



GAP NOT PRESENT

FOR REFERENCE ONLY

Figure 3

S.B. N°139-754 EMERGENCY ALERT
DATE: March 31, 2023
REVISION: /

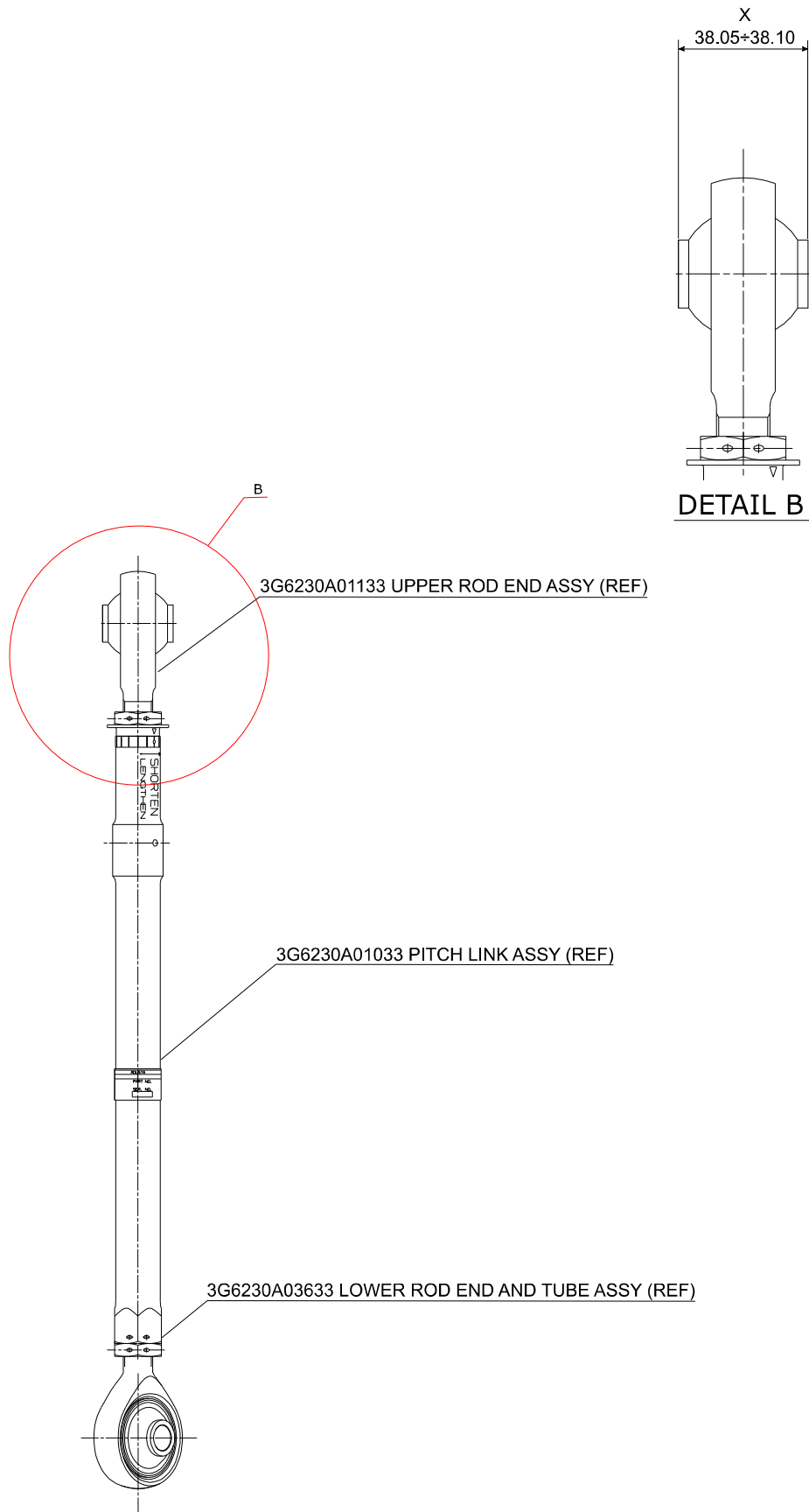


Figure 4



FOR REFERENCE ONLY

Figure 5

S.B. N°139-754 EMERGENCY ALERT
DATE: March 31, 2023
REVISION: /

SB 139-754 Rev. / – Inspection Report		
Date		
Upper Rod End Assy P/N 3G6230A01133	S/N	FH
Installed on Helicopter <input type="checkbox"/>	Stock item <input type="checkbox"/>	
S/N	FH	Installed on Pitch Link Assy P/N 3G6230A01033 S/N (if applicable)
Dimension “X” measurement		
Notes:		

Figure 6

ANNEX A

SB APPLICABILITY LIST - UPPER ROD END ASSY S/N

UPPER ROD END ASSY P/N 3G6230A01133 – AFFECTED S/Ns							
AW666175	AW666244	AW666274	AW666303	AW666332	AW666364	AW666408	AW666443
AW666176	AW666245	AW666275	AW666304	AW666334	AW666379	AW666411	AW666444
AW666177	AW666246	AW666276	AW666305	AW666335	AW666380	AW666412	AW666445
AW666178	AW666247	AW666277	AW666306	AW666336	AW666381	AW666414	AW666446
AW666179	AW666248	AW666278	AW666307	AW666337	AW666382	AW666415	AW666447
AW666180	AW666249	AW666279	AW666308	AW666338	AW666383	AW666416	AW666448
AW666181	AW666250	AW666280	AW666309	AW666339	AW666384	AW666418	AW666449
AW666182	AW666251	AW666281	AW666310	AW666340	AW666385	AW666419	AW666450
AW666183	AW666252	AW666282	AW666311	AW666341	AW666386	AW666420	AW666451
AW666184	AW666253	AW666283	AW666312	AW666342	AW666387	AW666421	AW666452
AW666185	AW666254	AW666284	AW666313	AW666344	AW666388	AW666422	AW666453
AW666186	AW666255	AW666285	AW666314	AW666345	AW666389	AW666423	AW666454
AW666187	AW666256	AW666286	AW666315	AW666346	AW666390	AW666424	AW666455
AW666188	AW666257	AW666287	AW666316	AW666347	AW666391	AW666425	AW666456
AW666189	AW666258	AW666288	AW666317	AW666348	AW666392	AW666426	AW666457
AW666190	AW666259	AW666289	AW666318	AW666349	AW666393	AW666428	AW666458
AW666191	AW666260	AW666290	AW666319	AW666350	AW666394	AW666430	AW666459
AW666192	AW666262	AW666291	AW666320	AW666351	AW666395	AW666431	AW666460
AW666193	AW666263	AW666292	AW666321	AW666352	AW666396	AW666432	AW666461
AW666194	AW666264	AW666293	AW666322	AW666353	AW666397	AW666433	AW666462
AW666195	AW666265	AW666294	AW666323	AW666354	AW666398	AW666434	AW666463
AW666196	AW666266	AW666295	AW666324	AW666355	AW666399	AW666435	AW666464
AW666197	AW666267	AW666296	AW666325	AW666356	AW666400	AW666436	AW666465
AW666198	AW666268	AW666297	AW666326	AW666358	AW666401	AW666437	AW666466
AW666199	AW666269	AW666298	AW666327	AW666359	AW666402	AW666438	AW666467
AW666240	AW666270	AW666299	AW666328	AW666360	AW666403	AW666439	AW666468
AW666241	AW666271	AW666300	AW666329	AW666361	AW666404	AW666440	AW666469
AW666242	AW666272	AW666301	AW666330	AW666362	AW666405	AW666441	AW666470
AW666243	AW666273	AW666302	AW666331	AW666363	AW666407	AW666442	AW666471

ANNEX A



AW666472	AW666512	AW666545	AW666575	MCR08046	MCR08078	MCR08108	MCR08138
AW666473	AW666513	AW666546	AW666576	MCR08047	MCR08079	MCR08109	MCR08139
AW666474	AW666514	AW666547	AW666577	MCR08048	MCR08080	MCR08110	MCR08140
AW666475	AW666517	AW666548	AW666578	MCR08049	MCR08081	MCR08111	MCR08141
AW666476	AW666518	AW666549	AW666579	MCR08050	MCR08082	MCR08112	MCR08142
AW666477	AW666519	AW666550	AW666580	MCR08051	MCR08083	MCR08113	MCR08143
AW666478	AW666520	AW666551	AW666581	MCR08052	MCR08084	MCR08114	MCR08144
AW666488	AW666521	AW666552	AW666582	MCR08053	MCR08085	MCR08115	MCR08145
AW666489	AW666522	AW666553	AW666583	MCR08054	MCR08086	MCR08116	MCR08146
AW666490	AW666523	AW666554	AW666584	MCR08055	MCR08087	MCR08117	MCR08147
AW666491	AW666524	AW666555	AW666585	MCR08056	MCR08088	MCR08118	MCR08148
AW666492	AW666525	AW666556	AW666586	MCR08057	MCR08089	MCR08119	MCR08149
AW666493	AW666526	AW666557	AW666587	MCR08058	MCR08090	MCR08120	MCR08150
AW666494	AW666528	AW666558	MCR08024	MCR08060	MCR08091	MCR08121	MCR08151
AW666495	AW666529	AW666559	MCR08026	MCR08062	MCR08092	MCR08122	MCR08152
AW666496	AW666530	AW666560	MCR08027	MCR08063	MCR08093	MCR08123	MCR08153
AW666497	AW666531	AW666561	MCR08028	MCR08064	MCR08094	MCR08124	MCR08154
AW666498	AW666532	AW666562	MCR08029	MCR08065	MCR08095	MCR08125	MCR08155
AW666499	AW666533	AW666563	MCR08031	MCR08066	MCR08096	MCR08126	MCR08156
AW666500	AW666534	AW666564	MCR08032	MCR08067	MCR08097	MCR08127	MCR08157
AW666501	AW666535	AW666565	MCR08035	MCR08068	MCR08098	MCR08128	MCR08158
AW666502	AW666536	AW666566	MCR08037	MCR08069	MCR08099	MCR08129	MCR08159
AW666503	AW666537	AW666567	MCR08038	MCR08070	MCR08100	MCR08130	MCR08160
AW666504	AW666538	AW666568	MCR08039	MCR08071	MCR08101	MCR08131	MCR08161
AW666505	AW666539	AW666569	MCR08040	MCR08072	MCR08102	MCR08132	MCR08162
AW666507	AW666540	AW666570	MCR08041	MCR08073	MCR08103	MCR08133	MCR08163
AW666508	AW666541	AW666571	MCR08042	MCR08074	MCR08104	MCR08134	MCR08164
AW666509	AW666542	AW666572	MCR08043	MCR08075	MCR08105	MCR08135	MCR08165
AW666510	AW666543	AW666573	MCR08044	MCR08076	MCR08106	MCR08136	MCR08166
AW666511	AW666544	AW666574	MCR08045	MCR08077	MCR08107	MCR08137	MCR08167

ANNEX A



MCR08168	MCR08301	MCR08334	MCR08364	MCR08396	MCR08429	MCR08460	MCR08492
MCR08169	MCR08303	MCR08335	MCR08365	MCR08397	MCR08430	MCR08461	MCR08493
MCR08170	MCR08304	MCR08336	MCR08366	MCR08398	MCR08431	MCR08462	MCR08495
MCR08171	MCR08305	MCR08337	MCR08367	MCR08399	MCR08432	MCR08463	MCR08496
MCR08172	MCR08306	MCR08338	MCR08368	MCR08400	MCR08433	MCR08464	MCR08497
MCR08273	MCR08307	MCR08339	MCR08370	MCR08401	MCR08434	MCR08465	MCR08498
MCR08274	MCR08308	MCR08340	MCR08371	MCR08402	MCR08435	MCR08467	MCR08499
MCR08275	MCR08309	MCR08341	MCR08372	MCR08403	MCR08436	MCR08468	MCR08500
MCR08276	MCR08310	MCR08342	MCR08374	MCR08404	MCR08437	MCR08469	MCR08501
MCR08277	MCR08311	MCR08343	MCR08375	MCR08405	MCR08438	MCR08470	MCR08502
MCR08279	MCR08312	MCR08344	MCR08376	MCR08406	MCR08439	MCR08471	MCR08538
MCR08280	MCR08313	MCR08345	MCR08377	MCR08407	MCR08440	MCR08472	MCR08540
MCR08282	MCR08314	MCR08346	MCR08378	MCR08408	MCR08441	MCR08473	MCR08541
MCR08284	MCR08315	MCR08347	MCR08379	MCR08409	MCR08442	MCR08474	MCR08542
MCR08285	MCR08316	MCR08348	MCR08380	MCR08410	MCR08443	MCR08475	MCR08543
MCR08286	MCR08317	MCR08349	MCR08381	MCR08411	MCR08444	MCR08476	MCR08544
MCR08287	MCR08318	MCR08350	MCR08382	MCR08412	MCR08445	MCR08477	MCR08545
MCR08288	MCR08319	MCR08351	MCR08383	MCR08413	MCR08446	MCR08478	MCR08546
MCR08289	MCR08320	MCR08352	MCR08384	MCR08414	MCR08447	MCR08479	MCR08547
MCR08290	MCR08321	MCR08353	MCR08385	MCR08415	MCR08448	MCR08480	MCR08548
MCR08291	MCR08322	MCR08354	MCR08386	MCR08416	MCR08449	MCR08482	MCR08549
MCR08292	MCR08323	MCR08355	MCR08387	MCR08417	MCR08450	MCR08483	MCR08550
MCR08293	MCR08324	MCR08356	MCR08388	MCR08418	MCR08451	MCR08484	MCR08552
MCR08294	MCR08326	MCR08357	MCR08389	MCR08422	MCR08452	MCR08485	MCR08553
MCR08295	MCR08327	MCR08358	MCR08390	MCR08423	MCR08453	MCR08486	MCR08554
MCR08296	MCR08328	MCR08359	MCR08391	MCR08424	MCR08454	MCR08487	MCR08555
MCR08297	MCR08330	MCR08360	MCR08392	MCR08425	MCR08455	MCR08488	MCR08556
MCR08298	MCR08331	MCR08361	MCR08393	MCR08426	MCR08456	MCR08489	MCR08557
MCR08299	MCR08332	MCR08362	MCR08394	MCR08427	MCR08457	MCR08490	MCR08558
MCR08300	MCR08333	MCR08363	MCR08395	MCR08428	MCR08458	MCR08491	MCR08559

ANNEX A



MCR08560	MCR08591	MCR08622	MCR08652	MCR08683	MCR08716	MCR08748	MCR08779
MCR08562	MCR08592	MCR08623	MCR08653	MCR08684	MCR08717	MCR08749	MCR08780
MCR08563	MCR08593	MCR08624	MCR08654	MCR08685	MCR08718	MCR08750	MCR08781
MCR08564	MCR08594	MCR08625	MCR08655	MCR08686	MCR08719	MCR08752	MCR08782
MCR08565	MCR08595	MCR08626	MCR08656	MCR08687	MCR08720	MCR08753	MCR08783
MCR08566	MCR08596	MCR08627	MCR08657	MCR08688	MCR08721	MCR08754	MCR08784
MCR08567	MCR08597	MCR08628	MCR08658	MCR08689	MCR08722	MCR08755	MCR08785
MCR08568	MCR08598	MCR08629	MCR08659	MCR08690	MCR08723	MCR08756	MCR08786
MCR08569	MCR08599	MCR08630	MCR08660	MCR08691	MCR08724	MCR08757	MCR08787
MCR08570	MCR08600	MCR08631	MCR08661	MCR08693	MCR08725	MCR08758	MCR08788
MCR08571	MCR08601	MCR08632	MCR08662	MCR08695	MCR08726	MCR08759	MCR08913
MCR08572	MCR08602	MCR08633	MCR08663	MCR08696	MCR08727	MCR08760	MCR08914
MCR08573	MCR08603	MCR08634	MCR08664	MCR08697	MCR08728	MCR08761	MCR08915
MCR08574	MCR08605	MCR08635	MCR08665	MCR08698	MCR08729	MCR08762	MCR08916
MCR08575	MCR08606	MCR08636	MCR08666	MCR08699	MCR08730	MCR08763	MCR08917
MCR08576	MCR08607	MCR08637	MCR08667	MCR08700	MCR08731	MCR08764	MCR08918
MCR08577	MCR08608	MCR08638	MCR08668	MCR08701	MCR08732	MCR08765	MCR08919
MCR08578	MCR08609	MCR08639	MCR08669	MCR08702	MCR08733	MCR08766	MCR08920
MCR08579	MCR08610	MCR08640	MCR08670	MCR08703	MCR08734	MCR08767	MCR08921
MCR08580	MCR08611	MCR08641	MCR08671	MCR08704	MCR08735	MCR08768	MCR08922
MCR08581	MCR08612	MCR08642	MCR08672	MCR08705	MCR08736	MCR08769	MCR08923
MCR08582	MCR08613	MCR08643	MCR08673	MCR08706	MCR08737	MCR08770	MCR08924
MCR08583	MCR08614	MCR08644	MCR08674	MCR08707	MCR08738	MCR08771	MCR08925
MCR08584	MCR08615	MCR08645	MCR08675	MCR08708	MCR08739	MCR08772	MCR08926
MCR08585	MCR08616	MCR08646	MCR08676	MCR08709	MCR08740	MCR08773	MCR08927
MCR08586	MCR08617	MCR08647	MCR08677	MCR08710	MCR08741	MCR08774	MCR08928
MCR08587	MCR08618	MCR08648	MCR08678	MCR08711	MCR08742	MCR08775	MCR08929
MCR08588	MCR08619	MCR08649	MCR08680	MCR08713	MCR08743	MCR08776	MCR08930
MCR08589	MCR08620	MCR08650	MCR08681	MCR08714	MCR08744	MCR08777	MCR08931
MCR08590	MCR08621	MCR08651	MCR08682	MCR08715	MCR08747	MCR08778	MCR08932

ANNEX A

MCR08933	MCR08965	MCR08995	MCR09028	MCR09059	MCR09220	MCR09257	MCR09288
MCR08934	MCR08966	MCR08996	MCR09029	MCR09060	MCR09221	MCR09258	MCR09289
MCR08935	MCR08967	MCR08997	MCR09030	MCR09061	MCR09222	MCR09259	MCR09290
MCR08936	MCR08968	MCR08999	MCR09031	MCR09190	MCR09223	MCR09260	MCR09291
MCR08937	MCR08969	MCR09000	MCR09032	MCR09191	MCR09224	MCR09261	MCR09292
MCR08938	MCR08970	MCR09001	MCR09034	MCR09192	MCR09225	MCR09262	MCR09293
MCR08939	MCR08971	MCR09002	MCR09035	MCR09193	MCR09226	MCR09263	MCR09294
MCR08940	MCR08972	MCR09004	MCR09036	MCR09194	MCR09227	MCR09264	MCR09295
MCR08941	MCR08973	MCR09005	MCR09037	MCR09195	MCR09228	MCR09265	MCR09296
MCR08942	MCR08974	MCR09006	MCR09038	MCR09196	MCR09229	MCR09266	MCR09297
MCR08943	MCR08975	MCR09007	MCR09039	MCR09197	MCR09230	MCR09267	MCR09298
MCR08944	MCR08976	MCR09008	MCR09040	MCR09198	MCR09231	MCR09268	MCR09299
MCR08945	MCR08977	MCR09009	MCR09041	MCR09199	MCR09232	MCR09269	MCR09300
MCR08946	MCR08978	MCR09010	MCR09042	MCR09200	MCR09234	MCR09270	MCR09301
MCR08947	MCR08979	MCR09011	MCR09043	MCR09201	MCR09240	MCR09271	MCR09302
MCR08948	MCR08980	MCR09012	MCR09044	MCR09202	MCR09241	MCR09272	MCR09303
MCR08949	MCR08981	MCR09013	MCR09045	MCR09203	MCR09242	MCR09273	MCR09304
MCR08950	MCR08982	MCR09014	MCR09046	MCR09204	MCR09243	MCR09274	MCR09305
MCR08951	MCR08983	MCR09015	MCR09047	MCR09205	MCR09244	MCR09275	MCR09306
MCR08952	MCR08984	MCR09016	MCR09048	MCR09206	MCR09245	MCR09276	MCR09307
MCR08954	MCR08985	MCR09018	MCR09049	MCR09207	MCR09246	MCR09277	MCR09308
MCR08955	MCR08986	MCR09019	MCR09050	MCR09208	MCR09247	MCR09278	MCR09309
MCR08956	MCR08987	MCR09020	MCR09051	MCR09209	MCR09248	MCR09279	MCR09310
MCR08957	MCR08988	MCR09021	MCR09052	MCR09210	MCR09249	MCR09281	MCR09311
MCR08958	MCR08989	MCR09022	MCR09053	MCR09211	MCR09250	MCR09282	MCR09314
MCR08959	MCR08990	MCR09023	MCR09054	MCR09212	MCR09251	MCR09283	MCR09315
MCR08960	MCR08991	MCR09024	MCR09055	MCR09214	MCR09252	MCR09284	MCR09316
MCR08962	MCR08992	MCR09025	MCR09056	MCR09215	MCR09254	MCR09285	MCR09317
MCR08963	MCR08993	MCR09026	MCR09057	MCR09216	MCR09255	MCR09286	MCR09318
MCR08964	MCR08994	MCR09027	MCR09058	MCR09219	MCR09256	MCR09287	MCR09319

ANNEX A



MCR09320	MCR09356	MCR09387	MCR09417	MCR09450	MCR09485	MCR09518	MCR09548
MCR09321	MCR09357	MCR09388	MCR09418	MCR09451	MCR09486	MCR09519	MCR09549
MCR09322	MCR09358	MCR09389	MCR09419	MCR09452	MCR09488	MCR09520	MCR09551
MCR09323	MCR09359	MCR09390	MCR09420	MCR09453	MCR09489	MCR09521	MCR09552
MCR09324	MCR09360	MCR09391	MCR09421	MCR09454	MCR09490	MCR09522	MCR09553
MCR09325	MCR09361	MCR09392	MCR09422	MCR09457	MCR09492	MCR09523	MCR09554
MCR09329	MCR09362	MCR09393	MCR09423	MCR09458	MCR09494	MCR09524	MCR09555
MCR09330	MCR09363	MCR09394	MCR09424	MCR09460	MCR09495	MCR09525	MCR09556
MCR09332	MCR09364	MCR09395	MCR09427	MCR09461	MCR09496	MCR09526	MCR09557
MCR09333	MCR09365	MCR09396	MCR09428	MCR09462	MCR09497	MCR09527	MCR09558
MCR09335	MCR09366	MCR09397	MCR09429	MCR09464	MCR09498	MCR09528	MCR09559
MCR09336	MCR09367	MCR09398	MCR09430	MCR09465	MCR09499	MCR09529	MCR09560
MCR09337	MCR09368	MCR09399	MCR09431	MCR09466	MCR09500	MCR09530	MCR09561
MCR09338	MCR09369	MCR09400	MCR09432	MCR09467	MCR09501	MCR09531	MCR09563
MCR09339	MCR09370	MCR09401	MCR09433	MCR09468	MCR09502	MCR09532	MCR09564
MCR09340	MCR09371	MCR09402	MCR09434	MCR09469	MCR09503	MCR09533	MCR09565
MCR09341	MCR09372	MCR09403	MCR09435	MCR09470	MCR09504	MCR09534	MCR09566
MCR09342	MCR09373	MCR09404	MCR09436	MCR09471	MCR09505	MCR09535	MCR09567
MCR09343	MCR09375	MCR09405	MCR09437	MCR09472	MCR09506	MCR09536	MCR09568
MCR09344	MCR09376	MCR09406	MCR09438	MCR09473	MCR09507	MCR09537	MCR09569
MCR09345	MCR09377	MCR09407	MCR09439	MCR09475	MCR09508	MCR09538	MCR09570
MCR09346	MCR09378	MCR09408	MCR09441	MCR09476	MCR09509	MCR09539	MCR09571
MCR09347	MCR09379	MCR09409	MCR09442	MCR09477	MCR09510	MCR09540	MCR09572
MCR09348	MCR09380	MCR09410	MCR09443	MCR09478	MCR09511	MCR09541	MCR09573
MCR09349	MCR09381	MCR09411	MCR09444	MCR09479	MCR09512	MCR09542	MCR09574
MCR09350	MCR09382	MCR09412	MCR09445	MCR09480	MCR09513	MCR09543	MCR09575
MCR09351	MCR09383	MCR09413	MCR09446	MCR09481	MCR09514	MCR09544	MCR09576
MCR09352	MCR09384	MCR09414	MCR09447	MCR09482	MCR09515	MCR09545	MCR09577
MCR09354	MCR09385	MCR09415	MCR09448	MCR09483	MCR09516	MCR09546	MCR09578
MCR09355	MCR09386	MCR09416	MCR09449	MCR09484	MCR09517	MCR09547	MCR09579

ANNEX A



MCR09580	MCR15026	MCR15056	MCR15086	MCR15116	MCR15146	MCR15177	MCR15207
MCR09581	MCR15027	MCR15057	MCR15087	MCR15117	MCR15147	MCR15178	MCR15208
MCR09582	MCR15028	MCR15058	MCR15088	MCR15118	MCR15148	MCR15179	MCR15210
MCR09583	MCR15029	MCR15059	MCR15089	MCR15119	MCR15149	MCR15180	MCR15211
MCR15000	MCR15030	MCR15060	MCR15090	MCR15120	MCR15150	MCR15181	MCR15214
MCR15001	MCR15031	MCR15061	MCR15091	MCR15121	MCR15151	MCR15182	MCR15215
MCR15002	MCR15032	MCR15062	MCR15092	MCR15122	MCR15152	MCR15183	MCR15216
MCR15003	MCR15033	MCR15063	MCR15093	MCR15123	MCR15153	MCR15184	MCR15217
MCR15004	MCR15034	MCR15064	MCR15094	MCR15124	MCR15154	MCR15185	MCR15218
MCR15005	MCR15035	MCR15065	MCR15095	MCR15125	MCR15155	MCR15186	MCR15219
MCR15006	MCR15036	MCR15066	MCR15096	MCR15126	MCR15156	MCR15187	MCR15220
MCR15007	MCR15037	MCR15067	MCR15097	MCR15127	MCR15157	MCR15188	MCR15221
MCR15008	MCR15038	MCR15068	MCR15098	MCR15128	MCR15158	MCR15189	MCR15222
MCR15009	MCR15039	MCR15069	MCR15099	MCR15129	MCR15159	MCR15190	MCR15223
MCR15010	MCR15040	MCR15070	MCR15100	MCR15130	MCR15160	MCR15191	MCR15224
MCR15011	MCR15041	MCR15071	MCR15101	MCR15131	MCR15161	MCR15192	MCR15225
MCR15012	MCR15042	MCR15072	MCR15102	MCR15132	MCR15162	MCR15193	MCR15226
MCR15013	MCR15043	MCR15073	MCR15103	MCR15133	MCR15164	MCR15194	MCR15227
MCR15014	MCR15044	MCR15074	MCR15104	MCR15134	MCR15165	MCR15195	MCR15228
MCR15015	MCR15045	MCR15075	MCR15105	MCR15135	MCR15166	MCR15196	MCR15229
MCR15016	MCR15046	MCR15076	MCR15106	MCR15136	MCR15167	MCR15197	MCR15230
MCR15017	MCR15047	MCR15077	MCR15107	MCR15137	MCR15168	MCR15198	MCR15231
MCR15018	MCR15048	MCR15078	MCR15108	MCR15138	MCR15169	MCR15199	MCR15232
MCR15019	MCR15049	MCR15079	MCR15109	MCR15139	MCR15170	MCR15200	MCR15233
MCR15020	MCR15050	MCR15080	MCR15110	MCR15140	MCR15171	MCR15201	MCR15234
MCR15021	MCR15051	MCR15081	MCR15111	MCR15141	MCR15172	MCR15202	MCR15235
MCR15022	MCR15052	MCR15082	MCR15112	MCR15142	MCR15173	MCR15203	MCR15236
MCR15023	MCR15053	MCR15083	MCR15113	MCR15143	MCR15174	MCR15204	MCR15237
MCR15024	MCR15054	MCR15084	MCR15114	MCR15144	MCR15175	MCR15205	MCR15238
MCR15025	MCR15055	MCR15085	MCR15115	MCR15145	MCR15176	MCR15206	MCR15239

ANNEX A

MCR15240	MCR15282	MCR15313	MCR15343	MCR15460
MCR15241	MCR15283	MCR15314	MCR15344	MCR15461
MCR15242	MCR15284	MCR15315	MCR15345	MCR15462
MCR15243	MCR15285	MCR15316	MCR15346	MCR15463
MCR15244	MCR15286	MCR15317	MCR15347	MCR15464
MCR15245	MCR15287	MCR15318	MCR15348	MCR15465
MCR15246	MCR15289	MCR15319	MCR15349	
MCR15247	MCR15290	MCR15320	MCR15350	
MCR15248	MCR15291	MCR15321	MCR15351	
MCR15249	MCR15292	MCR15322	MCR15352	
MCR15250	MCR15293	MCR15323	MCR15353	
MCR15251	MCR15294	MCR15324	MCR15354	
MCR15252	MCR15295	MCR15325	MCR15355	
MCR15253	MCR15296	MCR15326	MCR15356	
MCR15254	MCR15297	MCR15327	MCR15357	
MCR15255	MCR15298	MCR15328	MCR15358	
MCR15256	MCR15299	MCR15329	MCR15359	
MCR15257	MCR15300	MCR15330	MCR15360	
MCR15258	MCR15301	MCR15331	MCR15361	
MCR15259	MCR15302	MCR15332	MCR15362	
MCR15272	MCR15303	MCR15333	MCR15363	
MCR15273	MCR15304	MCR15334	MCR15364	
MCR15274	MCR15305	MCR15335	MCR15365	
MCR15275	MCR15306	MCR15336	MCR15366	
MCR15276	MCR15307	MCR15337	MCR15454	
MCR15277	MCR15308	MCR15338	MCR15455	
MCR15278	MCR15309	MCR15339	MCR15456	
MCR15279	MCR15310	MCR15340	MCR15457	
MCR15280	MCR15311	MCR15341	MCR15458	
MCR15281	MCR15312	MCR15342	MCR15459	

