
SERVICE BULLETIN**N° 139-601****DATE:** December 21, 2021**REV. :** A - May 11, 2022

TITLE**ATA 33 – INSPECTION AND REINFORCEMENT OF SEARCHLIGHT SUPPORT****REVISION LOG**

Helicopters that have complied with previous issue of this Service Bulletin do not need any additional action.

Revision A is issued to:

- Define actions to be performed if “Ordine di Lavoro” is not visible;
- Improve reinforcements installation procedure.

If logistic P/N 139-601L1 has already been provided, new parts shall be ordered, in accordance with paragraph A – REQUIRED MATERIALS, in order to apply Rev. A of this SB.

1. PLANNING INFORMATION

A. EFFECTIVITY

NOTE

If support searchlight assy P/N and/or related “Ordine di Lavoro” are not visible, contact Product Support Engineering (engineering.support.lhd@leonardo.com) to receive information on required actions.

Part I: Support searchlight assy P/N 3G3340A01133 installed on AW139 helicopters up to S/N 31939 and S/N 41576, equipped with Trakka A800 searchlight kits P/N 4G3340F02411, P/N 4G3340F02412, P/N 4G3340F02413, P/N 4G3340F02414 or Trakka searchlight kit P/N 4G3340F03011.

Support searchlight assy P/N 3G3340A01133 kept in stock.

Support searchlight assy P/N 3G3340A01133 installed on AW139 helicopters that have installed the support searchlight assy after the issue of this Service Bulletin.

Part II: Support searchlight assy P/N 3G3340A01133 having an “Ordine di Lavoro” indicated in Table 1.

NOTE

The “Ordine di Lavoro” is marked inside the support searchlight assy (refer to Figure 1 Detail A).

426241	428797/1	429250/2	432080/3	434608	438918
426241/1	428797/2	429250/3	432080/4	434608/1	438918/1
426241/2	428797/3	429250/4	432080/5	434609	438918/2
426241/3	428797/4	429755	432156	434609/1	439285
426242	428953	429755/1	432156/1	434610	439285/1
426242/1	428953/1	429755/2	432156/2	434610/1	439285/2
427057	428953/2	429755/3	434349	435306	439924/1
427057/1	429250	432080	434607	436024	439925
428797	429250/1	432080/1	434607/3	436941	439925/1

Table 1: Affected support searchlight assy – Ordine di Lavoro

B. COMPLIANCE

Part I

Within and not later than 100 flight hours or 3 months whichever occurs first after the issue of Rev./ of this Service Bulletin

Before the first installation for parts kept in stock.

Part II

Within and not later than 200 flight hours or 6 months whichever occurs first after the issue of Rev./ of this Service Bulletin

C. CONCURRENT REQUIREMENTS

N.A.

D. REASON

This Service Bulletin is issued in order to prescribe the inspection and, subsequently, the installation of searchlight support variant P/N 3G3340P01011.

E. DESCRIPTION

As a consequence of a recorded case of damaged Trakka searchlight support, Leonardo Helicopter has developed the searchlight support variant P/N 3G3340P01011 in order to improve the strength of the part.

The variant consists of an AFT reinforcement P/N 3G3340A17952 and a FWD reinforcement P/N 3G3340A17852 to be installed inside the searchlight support assy.

Part I of this Service Bulletin provides information to identify affected parts and to perform a visual inspection of the searchlight support in order to find possible damages.

Part II provides the instruction to install the searchlight support variant P/N 3G3340P01011.

F. APPROVAL

The technical content of this Service Bulletin is approved under the authority of DOA nr. EASA.21.J.005. For helicopters registered under other Aviation Authorities, before applying the Service Bulletin, applicable Aviation Authority approval must be checked within Leonardo Helicopters customer portal.

EASA states mandatory compliance with inspections, modifications or technical directives and related time of compliance by means of relevant Airworthiness Directives.

If an aircraft listed in the effectivity embodies a modification or repair not LHD certified and affecting the content of this Service Bulletin, it is responsibility of the Owner/Operator to obtain a formal approval by Aviation Authority having jurisdiction on

the aircraft, for any adaptation necessary before incorporation of the present Service Bulletin.

G. MANPOWER

To comply with this Service Bulletin the following MMH are deemed necessary:

Part I: approximately two (2) MMH;

Part II: approximately thirty-five (35) MMH;

MMH are based on hands-on time and can change with personnel and facilities available.

H. WEIGHT AND BALANCE

PART I

N.A.

PART II

WEIGHT (Kg)		0.835
	ARM (mm)	MOMENT (Kgmm)
LONGITUDINAL BALANCE	3591	2998.485
LATERAL BALANCE	-1266	-1057.11

I. REFERENCES

1) PUBLICATIONS

Following Data Modules refer to AMP:

<u>DATA MODULE</u>	<u>DESCRIPTION</u>	<u>PART</u>
DM01 39-A-00-20-00-00A-120A-A	Helicopter on ground for a safe maintenance	I, II
DM02 39-A-06-41-00-00A-010A-A	Access doors and panels - General data	I, II
DM03 39-L-33-49-05-00A-520A-K	Search light mount - Remove procedure	I, II
DM04 39-M-33-49-05-00A-520A-A	Search light mount - Remove procedure	I, II
DM05 39-L-33-49-04-00A-520A-K	Power Conditioning Interface Unit (PCIU) - Remove procedure	I, II
DM06 39-M-33-49-04-00A-520A-A	Power Conditioning Interface Unit (PCIU) - Remove procedure	I, II
DM07 39-L-33-49-04-00A-720A-K	Power Conditioning Interface Unit (PCIU) - Install procedure	I, II

S.B. N°139-601

DATE: December 21, 2021

REVISION: A - May 11, 2022

<u>DATA MODULE</u>	<u>DESCRIPTION</u>	<u>PART</u>
DM08 39-M-33-49-04-00A-720A-A	Power Conditioning Interface Unit (PCIU) - Install procedure	I, II
DM09 39-L-33-49-05-00A-720A-K	Search light mount - Install procedure	I, II
DM10 39-M-33-49-05-00A-720A-A	Search light mount - Install procedure	I, II
DM11 39-M-33-49-01-00A-520A-A	Search light assembly - Remove procedure	II
DM12 39-L-33-49-01-02A-520A-K	Dovetail mount (search light assembly) - Remove procedure	II
DM13 39-L-33-49-01-00A-520A-K	Search light assembly - Remove procedure	II
DM14 39-M-33-49-01-01A-520A-A	Dovetail mount (search light assembly) - Remove procedure	II
DM15 39-L-33-49-01-02A-720A-K	Dovetail mount (search light assembly) - Install procedure	II
DM16 39-L-33-49-01-00A-720A-K	Search light assembly - Install procedure	II
DM17 39-M-33-49-01-01A-720A-A	Dovetail mount (search light assembly) - Install procedure	II
DM18 39-M-33-49-01-00A-720A-A	Search light assembly - Install procedure	II

Following Data Modules refer to CSRP:

<u>DATA MODULE</u>	<u>DESCRIPTION</u>	<u>PART</u>
DM19 CSRP-A-51-23-06-00A-663A-D	Wet layup impregnation process - Standard repair procedure	II
DM20 CSRP-A-51-00-00-00A-013A-D	List of consumables for repairs - Numeric index	II
DM21 CSRP-A-51-21-02-00A-028A-D	Primer application - General	II

2) ACRONYMS & ABBREVIATIONS

AMDI	Aircraft Material Data Information
AMP	Aircraft Maintenance Publication
DM	Data Module
DOA	Design Organization Approval
EASA	European Aviation Safety Agency
IPD	Illustrated Parts Data
LH	Leonardo Helicopters
MMH	Maintenance-Man-Hours

3) ANNEX

N.A.

J. PUBLICATIONS AFFECTED

N.A.

K. SOFTWARE ACCOMPLISHMENT SUMMARY

N.A.

2. MATERIAL INFORMATION

A. REQUIRED MATERIALS

1) PARTS

PART I

N.A.

PART II

#	P/N	ALTERNATIVE P/N	DESCRIPTION	Q.TY	LVL	NOTE	LOG P/N
1	3G3340P01011		SEARCHLIGHT SUPPORT VARIANT INSTALLATION	REF	.	-	-
2	3G3340P01131		SEARCHLIGHT SUPPORT ASSY REWORKED	REF	..	-	-
3	3G3340A17852		FWD reinforcement	1	...	-	139-601L1
4	3G3340A17952		AFT reinforcement	1	...	-	139-601L1
5	A298A04TW03		Rivet	60	...	-	139-601L1
6	NAS1720C4L5P		Rivet	1	...	(1)	139-601L1
7	NAS1720C4L4P		Rivet	3	...	(1)	139-601L1
8	NAS1721C4L4P		Rivet	2	...	(1)	139-601L1
9	NAS1721C4L3P		Rivet	2	...	(1)	139-601L1
10	AW001CL003AT-X1		Support	1	.	-	-
11	A407A3C2P		Anchor nut	7	.	-	-
12	AW008TY-05-36		Washer	12	.	(4)	-
13	NAS1721C4L4P		Rivet	12	.	(4)	-

Refer also to IPD for the spares materials required to comply with the AMP DMs referenced in the accomplishment instructions.

2) CONSUMABLES

The following consumable materials, or equivalent, are necessary to accomplish this Service Bulletin:

#	SPEC./LHD CODE NUMBER	DESCRIPTION	Q.TY	NOTE	PART
14	199-05-002 Type I, Class 2	HysoI EA9309NA (C231)	AR	(2)(3)	II
15	MMM-A-132, Type 2, Class II	EA 9309.3NA AERO (C021)	AR	(2)(3)	II
16	A147A2209JB	Rubber	1.4 m	(4)(5)	II
17	199-05-002 Type 2, Class 3,	EA 956 AERO (C193)	AR	(2)	II
18	199-05-107 Type I, Class I	EC1357 (C455)	AR	(2)(4)	II

Refer also to AMDI for the consumable materials required to comply with the AMP DM referenced in the accomplishment instructions.

3) LOGISTIC MATRIX

In order to apply this Service Bulletin, the following Logistic P/N can be ordered in accordance with the applicable notes:

LOGISTIC P/N	Q.TY (PER HELO)	NOTE	PART
139-601L1	1		II
AW001CL003AT-X1	1		II
AW008TY-05-36	12	(4)	II
NAS1721C4L4P	12	(4)	II

NOTE

- (1) It is allowed to use over size rivet in case of ovalized holes .
- (2) Item to be procured as local supply.
- (3) The two adhesives are alternative.
- (4) Item to be ordered only if rubber removal is deemed necessary.
- (5) P/N A147A2209JB1320 is used in procedure. Last four digits indicate the rubber length in mm.

B. SPECIAL TOOLS

The following special tools, or equivalent, are necessary to accomplish this Service Bulletin:

#	P/N	DESCRIPTION	Q.TY	NOTE	PART
11	Commercial	Indelible pen	1	(2)	II

Refer also to ITEP for the special tools required to comply with the DM referred to in the accomplishment instructions.

SPECIAL TOOLS NOTE

- (B1) To be procured as local supply .

C. INDUSTRY SUPPORT INFORMATION

Owners/Operators who comply with the instructions of this Service Bulletin no later than the applicable date in the “Compliance” section will be eligible to receive required materials on free of charge basis, except for Consumable Materials and Special Tools.

NOTE: Customers who fail to comply with the instructions in this Service Bulletin before the compliance date are not eligible for the aforementioned special policy.

Please Issue relevant MMIR form to your Warranty Administration Dpt.

3. ACCOMPLISHMENT INSTRUCTIONS

GENERAL NOTES

- a) Place an identification tag on all components that are re-usable, including the attaching hardware that has been removed to gain access to the modification area and adequately protect them until their later re-use.
- b) Protect properly all those equipment not removed from area affected by the modification during installation procedure.
- c) Let the adhesive cure at room temperature for at least 24 hours, unless otherwise specified.
- d) All lengths are in mm.

PART I

NOTE

Perform following steps 1 thru 3 only if the searchlight support assy is installed on the helicopter.

1. In accordance with AMP DM 39-A-00-20-00-00A-120A-A prepare the helicopter on ground for a safe maintenance. Disconnect the battery, all electrical power sources and/or the external power supply.

NOTE

The removal of the searchlight assembly and the dovetail mount from the searchlight assy it's not required to perform the visual inspection.

NOTE

Refer to AMP DM 39-L-33-49-05-00A-520A-K for kit Trakka A800 searchlight P/N 4G3340F02411, P/N 4G3340F02412, P/N 4G3340F02413 or P/N 4G3340F02414 and to AMP DM 39-L-33-49-05-00A-520A-K for kit Trakka searchlight P/N 4G3340F03011.

2. In accordance with AMP DM 39-L-33-49-05-00A-520A-K or with AMP DM 39-M-33-49-05-00A-520A-A, remove the searchlight support assy from the helicopter.
3. If necessary, in accordance with AMP DM 39-L-33-49-04-00A-520A-K or with AMP DM

39-M-33-49-04-00A-520A-A remove the power conditioning interface unit from the searchlight support assy.

4. With reference to Figure 1 Detail A, check the “Ordine di Lavoro” marked inside the support searchlight assy.

NOTE

Perform following step 5 only if the “Ordine di Lavoro” is among those listed in the Table 1 in the Effectivity paragraph. Otherwise skip to step 7.

5. Perform a visual inspection of the searchlight support assy and check for any crack or damage in the FWD area of the support.
6. In case of finding, record for compliance with Part I of this Service Bulletin on the helicopter logbook and immediately skip to Part II of this Service Bulletin. Otherwise, perform following Step 7.

NOTE

Skip following steps 7 and 8 if the searchlight support assy is kept in stock.

7. If necessary, in accordance with AMP DM 39-L-33-49-04-00A-720A-K or AMP DM 39-M-33-49-04-00A-720A-A, install the power conditioning interface unit on the searchlight support assy.

NOTE

Refer to AMP DM 39-L-33-49-05-00A-720A-K for kit Trakka A800 searchlight P/N 4G3340F02411, P/N 4G3340F02412, P/N 4G3340F02413 or P/N 4G3340F02414 and to AMP DM 39-M-33-49-05-00A-720A-A for kit Trakka searchlight P/N 4G3340F03011.

8. In accordance with AMP DM 39-L-33-49-05-00A-720A-K or AMP DM 39-M-33-49-05-00A-720A-A, install the searchlight support assy on the helicopter.
9. Return the helicopter to flight configuration, if required, and record for compliance with Part I of this Service Bulletin on the helicopter logbook.
10. Send the attached compliance form to the following mail box:

engineering.support.lhd@leonardo.com

As an alternative, gain access to My Communications section on Leonardo WebPortal and compile the “Service Bulletin Application Communication”.

PART II

NOTE

Perform following steps 1 thru 3 only if the searchlight support assy is installed on the helicopter.

1. In accordance with AMP DM 39-A-00-20-00-00A-120A-A prepare the helicopter on ground for a safe maintenance. Disconnect the battery, all electrical power sources and/or the external power supply.

NOTE

Perform following step 2 if helicopter is equipped with kit Trakka A800 searchlight P/N 4G3340F02411, P/N 4G3340F02412, P/N 4G3340F02413 or P/N 4G3340F02414.

2. Remove the searchlight support assy from the helicopter as described in the following procedure:
 - 2.1 In accordance with AMP DM 39-L-33-49-01-00A-520A-K, remove the search light assembly from the searchlight support assy 3G3340A01133 from the helicopter.
 - 2.2 In accordance with AMP DM 39-L-33-49-01-02A-520A-K, remove the dovetail mount from the searchlight support assy.
 - 2.3 In accordance with AMP DM 39-L-33-49-05-00A-520A-K, remove the searchlight support assy from the helicopter.
 - 2.4 In accordance with AMP DM 39-L-33-49-04-00A-520A-K, remove the power conditioning interface unit from the searchlight support assy.

NOTE

Perform following step 3 if helicopter is equipped with kit Trakka searchlight P/N 4G3340F03011.

3. Remove the searchlight support assy from the helicopter as described in the following procedure:
 - 3.1 In accordance with AMP DM 39-M-33-49-01-00A-520A-A, remove the search light assembly from the searchlight support assy.
 - 3.2 In accordance with AMP DM 39-M-33-49-01-01A-520A-A, remove the dovetail mount from the searchlight support assy.
 - 3.3 In accordance with AMP DM 39-M-33-49-05-00A-520A-A, remove the searchlight support assy from the helicopter.
 - 3.4 In accordance with AMP DM 39-M-33-49-04-00A-520A-A remove the power conditioning interface unit from the searchlight support assy.

4. With reference to Figures 1 and 2, gain access to the area affected by the installation and perform searchlight support assy rework P/N 3G3340P01131 as described in the following procedure:

4.1 With reference to Figure 1 View B, remove and retain for later reuse the cover P/N 3G3340A03452, n°5 screws P/N MS27039-1-09, n°3 screws P/N MS27039-1-11 and n°8 washers P/N NAS1149C0316R from the searchlight support assy.

4.2 With reference to Figure 1 View B1, remove and retain for later reuse the cover P/N 3G3340A01953, n°4 screws P/N MS27039-1-10 and n°4 washers P/N NAS1149C0316R from the searchlight support assy.

4.3 With reference to Figure 1 View B, remove and discard support P/N AW001CL003AT-X1 from the searchlight support assy.

4.4 With reference to Figure 1 View B1, remove n°7 anchor nut P/N A407A3C2P from the searchlight support assy.

NOTE

Perform following Step 4.5 only if the rubber removal is deemed necessary for make the rework easier.

4.5 With reference to Figure 1 Detail A, remove the rubber P/N A147A2209JB1320.

NOTE

Remove the support P/N 3G3340A03551 using a spatula. Pay attention to not damage the parts during the removal. Sand parts surfaces to remove extra material remained on them.

4.6 With reference to Figure 1 View B1, remove and retain for later reuse the support P/N 3G3340A03551 and remove and discard the rivet P/N NAS1720C4L5P, n°3 rivets P/N NAS1720C4L4P and n°2 rivets P/N NAS1721C4L4P from the searchlight support assy.

NOTE

If necessary, it is possible to trim the AFT reinforcement to let it fit with the internal part of the support. Make sure to maintain the minimum edge margin of the rivet holes.
(Refer to Figure 3 Detail H).

4.7 With reference to Figure 2 Section F-F, temporarily locate the AFT reinforcement P/N 3G3340A17952 in its position inside the searchlight support assy.

4.8 With reference to Figure 3 Detail H, trim the AFT reinforcement on the gasket side

as indicated.

NOTE

If one or more AFT reinforcement existing holes do not match with support holes, perform following step 4.9 to align the two parts, otherwise skip to step 4.10.

- 4.9 Modify AFT reinforcement P/N 3G3340A17952 as described in the following procedure:

NOTE

For wet layup procedure refer to CSRP-A-51-23-06-00A-663A-D.

NOTE

As valid alternatives it is possible to use carbon fiber CC90 or a carbon fabric dry from Table 1 of CSRP-A-51-00-00-00A-013A-D.

NOTE

Layers dimensions indicated in figure are indicative. It is possible to slightly decrease dimensions in order not to cover other holes present on the reinforcement.

- 4.9.1 With reference to Figure 3 Section G-G, apply a layer (P1) of Carbon fiber dry fabric HexForce G0801 7 1020 and let it cure.
- 4.9.2 With reference to Figure 3 Section G-G, fill 7 screw holes with EA9309NA.
- 4.9.3 With reference to Figure 3 Section G-G, apply a layer (P2 and P3) of Carbon fiber dry fabric HexForce G0801 7 1020 and let them cure.
- 4.9.4 In accordance with CSRP-A-51-21-02-00A-028A-D, protect repaired area with primer.
- 4.9.5 With reference to Figure 2 Section F-F, countermark and drill n°7 anchor nuts holes $\varnothing 5.74 \div 5.86$ thru the aft reinforcement.

NOTE

If necessary, it is possible to temporary locate the reinforcement on the outer side of the support in order to countermark all the holes. Make sure to achieve the correct alignment.

- 4.10 With reference to figure 2 Section F-F, countermark 26 rivet holes on the searchlight support assy.

NOTE

Fill with adhesive all the possible empty spaces under the AFT reinforcement. It is possible to slightly trim the AFT reinforcement to let the central hole coincide with the support hole.

- 4.11 With reference to Figure 1 View B2 and in accordance with dimension shown, install the AFT reinforcement P/N 3G3340A17952 on the searchlight support assy by means of adhesive (C231).
- 4.12 With reference to Figure 1 View B2, fix the AFT reinforcement P/N 3G3340A17952 on the searchlight support assy by means of n°26 rivets P/N A298A04TW03.

NOTE

If necessary, it is possible to trim the FWD reinforcement to let it fit with the internal part of the support. Make sure to maintain the minimum edge margin of the rivet holes (Refer to Figure 3 Detail H).

- 4.13 With reference to Figure 2 Section E-E, temporarily locate the FWD reinforcement P/N 3G3340A17852 in its position inside the searchlight support assy.
- 4.14 With reference to Figure 3 Detail H, trim the FWD reinforcement on the gasket side as indicated.

NOTE

If necessary, it is possible to temporarily locate the reinforcement on the outer side of the support in order to countermark all the holes. Make sure to achieve the correct alignment.

- 4.15 With reference to figure 2 Section E-E, countermark 29 rivet holes on the searchlight support assy.
- 4.16 With reference to Figure 2 View C and in accordance with dimension shown, install the FWD reinforcement P/N 3G3340A17852 on the searchlight support assy by means of adhesive (C231).
- 4.17 With reference to Figure 2 View C, fix the FWD reinforcement P/N 3G3340A17852 on the searchlight support assy by means of n°29 rivets P/N A298A04TW03.
- 4.18 With reference to Figure 1 View B1, place and install the support P/N 3G3340A03551 previously removed on the searchlight support assy by means of adhesive (C231).

- 4.19 With reference to Figure 1 View B1, fix the support P/N 3G3340A03551 on the searchlight support assy by means of the rivet P/N NAS1720C4L5P and n°3 rivets P/N NAS1720C4L4P.
- 4.20 With reference to Figure 1 View B1, install n°7 anchor nuts P/N A407A3C2P on the searchlight support assy by means of adhesive EA 9309.3NA AERO.
- 4.21 With reference to Figure 1 View B1, install the cover P/N 3G3340A01953 previously removed on the searchlight support assy by means of n°4 screws P/N MS27039-1-10 and n°4 washers P/N NAS1149C0316R previously removed.
- 4.22 With reference to Figure 1 View B, install support P/N AW001CL003AT-X1 on the searchlight support assy by means of adhesive EA 956 AERO.

NOTE

Perform following Step 4.23 only if the rubber has been removed.

- 4.23 With reference to Figure 1 Detail A, install rubber P/N A147A2209JB1320 on the searchlight support assy by means of adhesive EC1357, n°12 washers P/N AW008TY-05-36, n°12 rivets P/N NAS1721C4L4P.

NOTE

Skip following Steps 5 and 6 if the searchlight support assy is kept in stock.

- 4.24 With reference to Figure 1 View B, install the cover P/N 3G3340A03452 previously removed on the searchlight support assy by means of n°5 screws P/N MS27039-1-09, n°3 screws P/N MS27039-1-11 and n°8 washers P/N NAS1149C0316R previously removed.
 - 4.25 With reference to Figure 1 Detail A, remark the reworked searchlight support assy as P/N 3G3340P01131 by means of an indelible pen.
5. If necessary, in accordance with AMP DM 39-L-33-49-04-00A-720A-K, install the power conditioning interface unit on the searchlight support assy.

NOTE

Perform following step 6 only if helicopter is equipped with kit Trakka A800 searchlight P/N 4G3340F02411 or P/N 4G3340F02412 or P/N 4G3340F02413 or P/N 4G3340F02414.

6. Re-install the searchlight support assy on the helicopter as described in the following procedure:
- 6.1 In accordance with AMP DM 39-L-33-49-05-00A-720A-K, install the searchlight

support assy on the helicopter.

- 6.2 In accordance with AMP DM 39-L-33-49-01-02A-720A-K, install the dovetail mount on the searchlight support assy.
- 6.3 In accordance with AMP DM 39-L-33-49-01-00A-720A-K, install the search light assembly on the searchlight support assy.

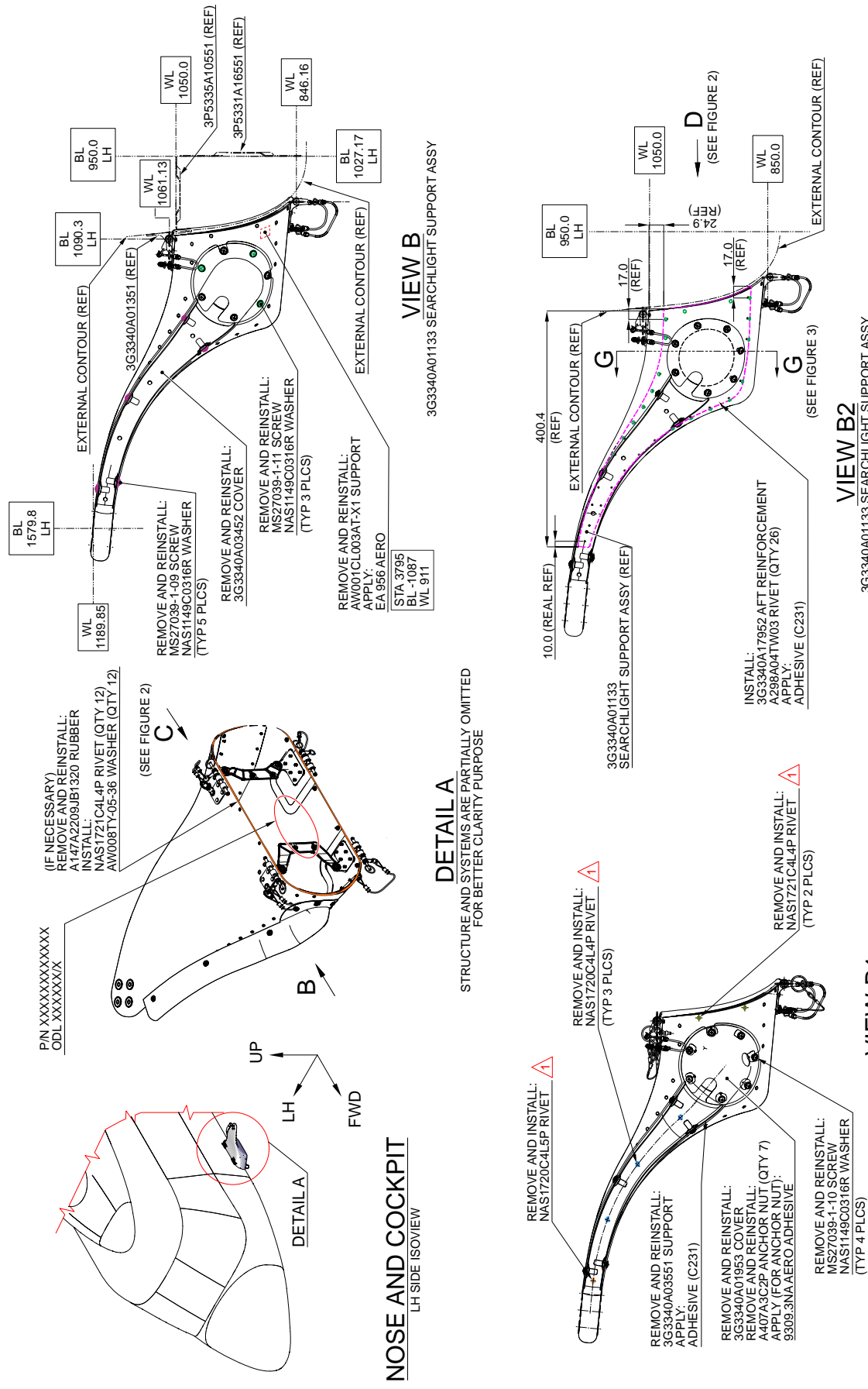
NOTE

Perform following step 7 only if helicopter is equipped
with kit Trakka searchlight P/N 4G3340F03011.

7. Re-install the searchlight support assy on the helicopter as described in the following procedure:
 - 7.1 In accordance with AMP DM 39-M-33-49-05-00A-720A-A, install the searchlight support assy on the helicopter.
 - 7.2 In accordance with AMP DM 39-M-33-49-01-01A-720A-A, install the dovetail mount on the searchlight support assy.
 - 7.3 In accordance with AMP DM 39-M-33-49-01-00A-720A-A, install the search light assembly on the searchlight support assy.
8. In accordance with weight and balance changes, update the Chart A (see Rotorcraft Flight Manual, Part II, section 6).
9. Return the helicopter to flight configuration and record for compliance with Part II of this Service Bulletin on the helicopter logbook.
10. Send the attached compliance form to the following mail box:

engineering.support.lhd@leonardo.com

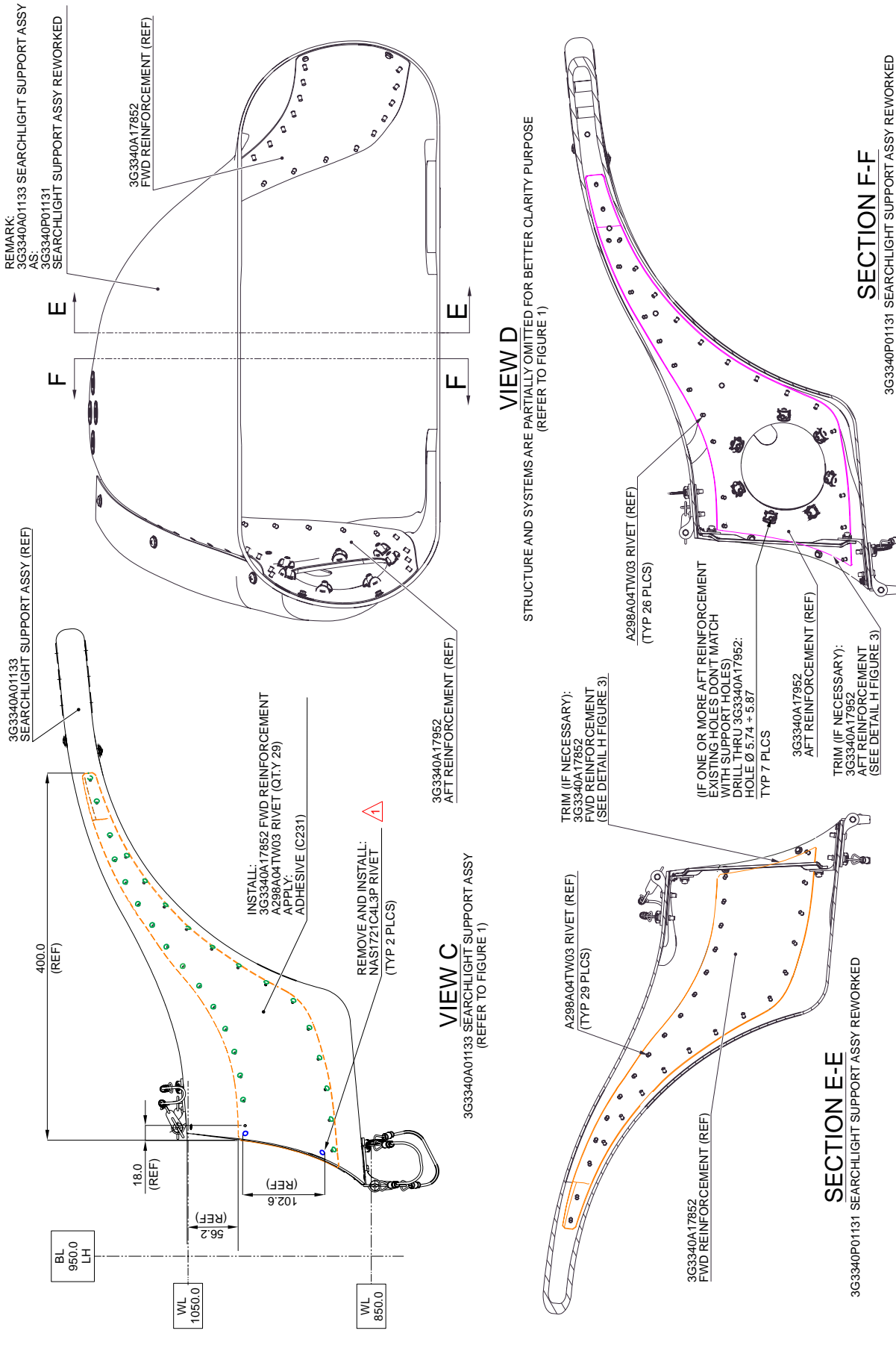
As an alternative, gain access to My Communications section on Leonardo WebPortal and compile the "Service Bulletin Application Communication".



3G3340P01131
SEARCHLIGHT SUPPORT ASSY REWORKED

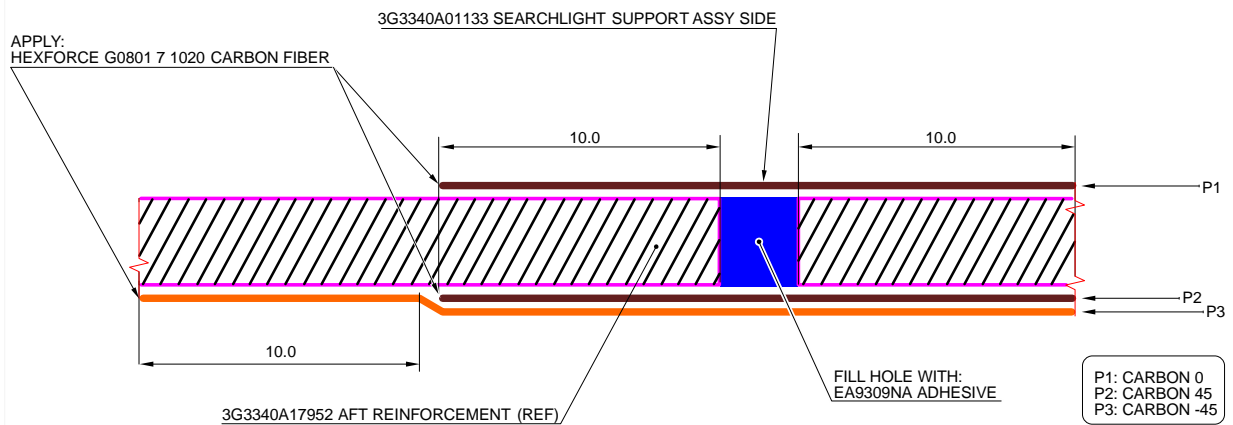
Figure 1

⚠ IT IS ALLOWED TO USE OVER SIZE OF RIVET IN CASE OF OVALIZED HOLES



⚠ IT IS ALLOWED TO USE OVER SIZE OF RIVET IN CASE OF OVALIZED HOLES

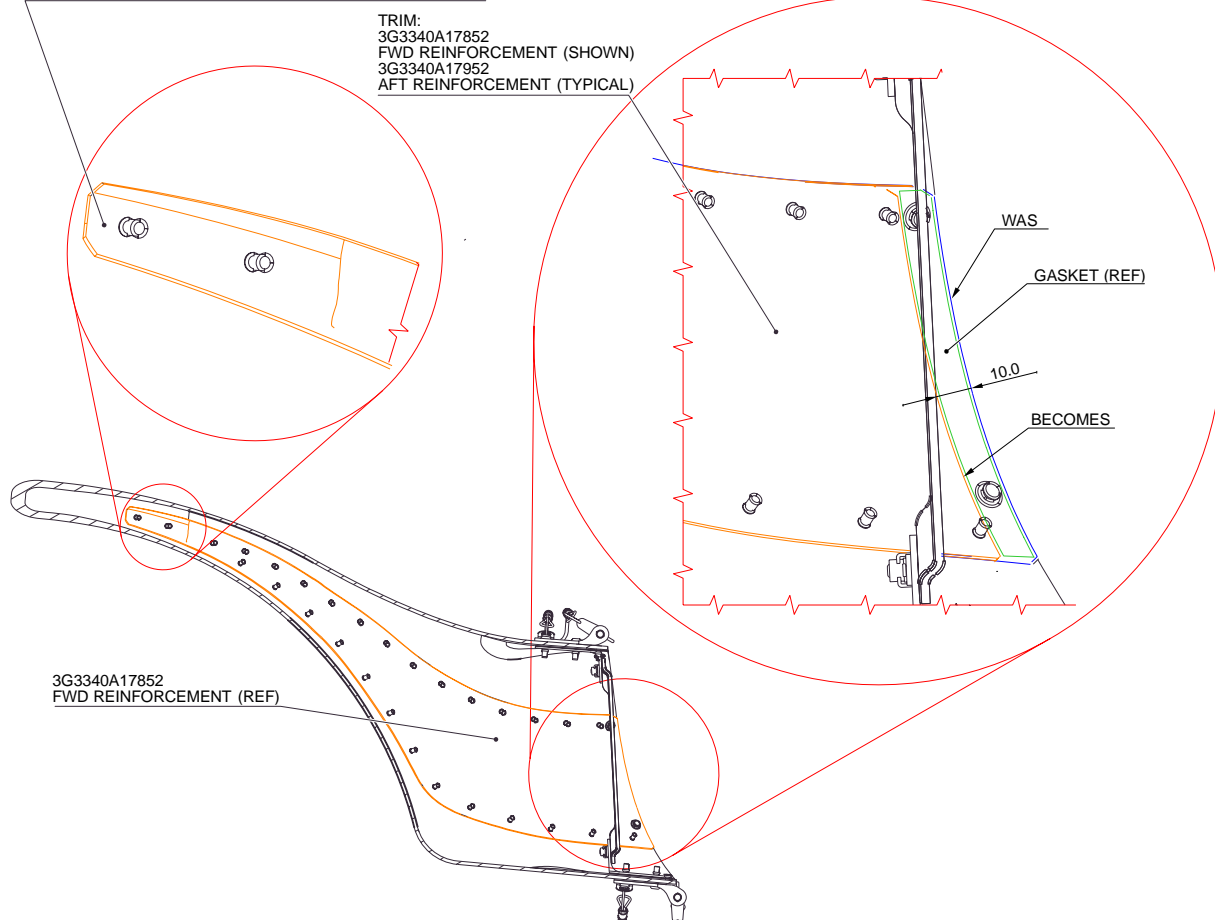
Figure 2



SCHEMATIC SECTION G-G

(IF ONE OR MORE AFT REINFORCEMENT EXISTING HOLES DON'T MATCH WITH SUPPORT HOLES)
(TYP 7 PLCS)
(REFER TO FIGURE 1)

IF NECESSARY IT IS POSSIBLE TO SLIGHTLY TRIM THE
FWD REINFORCEMENT TO LET IT FIT WITH THE INTERNAL
PART OF THE SUPPORT. MAKE SURE NOT TO LOSE THE
MINIMUM EDGE MARGIN OF THE RIVET HOLES



DETAIL H

3G3340A17852 FWD REINFORCEMENT REWORK
(TYPICAL FOR 3G3340A17952 AFT REINFORCEMENT)
(REFER TO FIGURE 2)

Figure 3

