
SERVICE BULLETIN

N° 139-518

DATE: June 22, 2021

REV. : /

TITLE

ATA 33 - HELICOPTER EMERGENCY EXIT LIGHTS SYSTEM INSTALLATION

REVISION LOG

First Issue

An appropriate entry should be made in the aircraft log book upon accomplishment.
If ownership of aircraft has changed, please, forward to new owner.

1. PLANNING INFORMATION

A. EFFECTIVITY

AW139 helicopter S/N 41321.

B. COMPLIANCE

At Customer's option.

C. CONCURRENT REQUIREMENTS

N.A.

D. REASON

This Service Bulletin is issued in order to provide the necessary instructions on how to perform the installation of kit HEELS P/N 4G3350F00112.

E. DESCRIPTION

The function of the Helicopter Emergency Exit Lights System is to provide identification of all the emergency exits when the cabin becomes submerged (partially or completely), as a consequence of ditching. The kit is activated automatically by eight water sensors.

The light assemblies, installed in correspondence of the helicopter doors and windows, are supplied by five batteries.

F. APPROVAL

The technical content of this Service Bulletin is approved under the authority of DOA nr. EASA.21.J.005. For helicopters registered under other Aviation Authorities, before applying the Service Bulletin, applicable Aviation Authority approval must be checked within Leonardo Helicopters customer portal.

EASA states mandatory compliance with inspections, modifications or technical directives and related time of compliance by means of relevant Airworthiness Directives.

If an aircraft listed in the effectivity embodies a modification or repair not LHD certified and affecting the content of this Service Bulletin, it is responsibility of the Owner/Operator to obtain a formal approval by Aviation Authority having jurisdiction on the aircraft, for any adaptation necessary before incorporation of the present Service Bulletin.

G. MANPOWER

To comply with this Service Bulletin approximately one-hundred and twenty (120) MMH are deemed necessary.

MMH are based on hands-on time and can change with helicopter configuration, personnel and facilities available.

H. WEIGHT AND BALANCE

WEIGHT (Kg)	ARM (mm)	MOMENT (Kgmm)
	6.5	
LONGITUDINAL BALANCE	3745	24342.5
LATERAL BALANCE	17	110.5

I. REFERENCES

1) PUBLICATIONS

Following Data Modules refer to AMP:

<u>DATA MODULE</u>	<u>DESCRIPTION</u>	<u>PART</u>
DM01 39-A-00-20-00-00A-120A-A	Helicopter on ground for a safe maintenance	-
DM02 39-A-06-41-00-00A-010A-A	Access doors and panels - General data.	-
DM03 39-A-11-00-01-00A-720A-A	Decal – Install procedure	-
DM04 39-A-20-10-08-00A-622A-A	Electrical contacts - Crimp	-
DM05 39-C-33-52-00-00A-340A-K	Emergency exit lighting system - Function test	-
DM06 39-C-33-52-01-00A-921A-K	Left cockpit door light - Replacement	-
DM07 39-C-33-52-02-00A-921A-K	Left cockpit door light support - Replacement	-
DM08 39-C-33-52-03-00A-921A-K	Left cockpit door light wiring cover - Replacement	-
DM09 39-C-33-52-04-00A-921A-K	Left cockpit door light battery pack - Replacement	-
DM10 39-C-33-52-05-00A-921A-K	Left cockpit door light power supply - Replacement	-
DM11 39-C-33-52-06-00A-921A-K	Right cockpit door light - Replacement	-
DM12 39-C-33-52-07-00A-921A-K	Right cockpit door light support - Replacement	-
DM13 39-C-33-52-08-00A-921A-K	Right cockpit door light wiring cover - Replacement	-
DM14 39-C-33-52-09-00A-921A-K	Right cockpit door light battery pack - Replacement	-
DM15 39-C-33-52-10-00A-921A-K	Right cockpit door light power	-

<u>DATA MODULE</u>	<u>DESCRIPTION</u>	<u>PART</u>
	supply - Replacement	
DM16	39-C-33-52-11-00A-921A-K Left cabin window light - Replacement	-
DM17	39-C-33-52-12-00A-921A-K Right cabin window light - Replacement	-
DM18	39-C-33-52-13-00A-921A-K Cabin window battery pack - Replacement	-
DM19	39-C-33-52-14-00A-921A-K Cabin window power supply - Replacement	-
DM20	39-C-33-52-15-00A-921A-K Left cabin door light - Replacement	-
DM21	39-C-33-52-16-00A-921A-K Left cabin door battery pack - Replacement	-
DM22	39-C-33-52-17-00A-921A-K Left cabin door power supply - Replacement	-
DM23	39-C-33-52-18-00A-921A-K Right cabin door light - Replacement	-
DM24	39-C-33-52-19-00A-921A-K Right cabin door battery pack - Replacement	-
DM25	39-C-33-52-20-00A-921A-K Right cabin door power supply - Replacement	-
DM26	39-A-52-11-01-00A-520A-A Left cockpit door - Remove procedure	-
DM27	39-A-52-11-01-00A-720A-A Left cockpit door - Install procedure	-
DM28	39-A-52-11-02-00A-520A-A Right cockpit door - Remove procedure	-
DM29	39-A-52-11-02-00A-720A-A Right cockpit door - Install procedure	-

Following Data Modules refer to CSRP:

<u>DATA MODULE</u>	<u>DESCRIPTION</u>	<u>PART</u>
DM30	CSRP-A-51-42-00-00A-720A-D Potted Inserts - Install procedure	-

2) ACRONYMS & ABBREVIATIONS

AMDI	Aircraft Material Data Information
AMP	Aircraft Maintenance Publication
AR	As Required
AVCS	Active Vibration Control System
DM	Data Module
DOA	Design Organization Approval
EASA	European Aviation Safety Agency
HEELS	Helicopter Emergency Exit Lights System
IPD	Illustrated Part Data

ITEP	Illustrated tool and equipment publication
LH	Left Hand
LHD	Leonardo Helicopters Division
MMH	Maintenance Man Hours
N.A.	Not Applicable
P/N	Part Number
SB	Service Bulletin
S/N	Serial Number

3) ANNEX

N.A.

J. PUBLICATIONS AFFECTED

N.A.

K. SOFTWARE ACCOMPLISHMENT SUMMARY

N.A.

2. MATERIAL INFORMATION

A. REQUIRED MATERIALS

1) PARTS

#	P/N	ALTERNATIVE P/N	DESCRIPTION	Q.TY	LVL	NOTE	LOG P/N
1	4G3350F00112		KIT HEELS	REF	.		-
2	4G3350A00112		HEELS INSTALLATION	REF	..		-
3	3G3350A00111		HEELS light assy	2	...		139-518L1
4	3G3350A00211		HEELS light assy	2	...		139-518L1
5	3G3350A00311		HEELS light assy	2	...		139-518L1
6	3G3350A00411		HEELS light assy	2	...		139-518L1
7	3G3350A00511		HEELS light assy	2	...		139-518L1
8	3G3350A00611		HEELS light assy	2	...		139-518L1
9	3G3350A00911		HEELS light assy	5	...		139-518L1
10	3G3350A01011		HEELS light assy	2	...		139-518L1
11	3G3350A01111		HEELS light assy	2	...		139-518L1
12	3G3350A01211		HEELS light assy	2	...		139-518L1
13	3G3350A01311		HEELS light assy	2	...		139-518L1
14	3G3350A01411		HEELS light assy	2	...		139-518L1
15	3G3350A01511		HEELS light assy	3	...		139-518L1
16	3G3350A01611		HEELS light assy	2	...		139-518L1
17	3G3350A01711		Power supply assy	5	...		139-518L1
18	3G3350A01811		Battery assy	5	...		139-518L1
19	3G5310A09211		HEELS STRUCTURAL PROVISION	REF	...		-
20	3G3350A01631		HEELS support assy LHS	1	(1)	-
21	3G3350A01931		HEELS support assy RHS	1	(1)	-
22	3G3350V00351		Mounting bracket	2		139-518L1
23	3G5310A09451		Protection LHS	1	(2)	-
24	3G5310A09551		Protection RHS	1	(2)	-
25	3G5310A09651		Spacer	4		139-518L1
26	A414A02V209E1		Support	2		139-518L1
27	A428A08C09		Screw	4		139-518L1
28	A428A3C07		Screw	14		139-518L1
29	MS27039-1-07		Screw	4		139-518L1
30	MS35207-260		Screw	8		139-518L1
31	NAS1149D0316J		WASHER	8		139-518L1
32	NAS1832-3-5		Insert	4		139-518L1
33	NAS1836C06-13M		Insert	6		139-518L1
34	NAS1836C08-13M		Insert	6		139-518L1
35	NAS1836C3-13M		Insert	24		139-518L1
36	3G5310A09751		Bracket	4	...		139-518L1
37	3G9A01A26401		HEEL lights C/A (A1A264)	1	...		139-518L1
38	3G9A01B27501		HEEL lights C/A (A1B275)	1	...		139-518L1
39	3G9B01A29801	3G9B01A29801A10R	HEEL lights C/A (B1A298)	1	...		139-518L1
40	3G9B01A30001		HEEL lights C/A (B1A300)	1	...		139-518L1
41	3G9B01B29801	4G3350A00112A1R	HEEL lights C/A (B1B298)	1	...		139-518L1
42	3G9B01B32601		HEEL lights C/A (B1B326)	1	...		139-518L1
43	3G9B01B30001		HEEL lights C/A (B1B300)	1	...		139-518L1
44	A366A3E12C		Stud	5	...		139-518L1
45	A388A3E12C		Standoff	3	...		139-518L1
46	A522A02A		Rail	5	...		139-518L1
47	A596A04		Junction	4	...		139-518L1

#	P/N	ALTERNATIVE P/N	DESCRIPTION	Q.TY	LVL	NOTE	LOG P/N
48	AW001CB04H		Clamp	4	...		139-518L1
49	AW001CB05H		Clamp	4	...		139-518L1
50	AW001CB06H		Clamp	4	...		139-518L1
51	AW001CL000A-X3		Support	16	...		139-518L1
52	AW001CL001-N6		Support	11	...		139-518L1
53	AW001CL005C01-X1		Support	2	...		139-518L1
54	AW001CL009-CM		Support	4	...		139-518L1
55	AW001CL509-N6		Support	4	...		139-518L1
56	ED300BT3		Decal	1	...		139-518L1
57	ED300BT4		Decal	1	...		139-518L1
58	ED300BT5		Decal	1	...		139-518L1
59	ED300BT6		Decal	1	...		139-518L1
60	ED300BT7		Decal	1	...		139-518L1
61	ED300DS100		Decal	1	...		139-518L1
62	ED300DS61		Decal	1	...		139-518L1
63	ED300DS62		Decal	1	...		139-518L1
64	ED300DS66		Decal	1	...		139-518L1
65	ED300DS67		Decal	1	...		139-518L1
66	ED300DS68		Decal	1	...		139-518L1
67	ED300DS69		Decal	1	...		139-518L1
68	ED300DS70		Decal	1	...		139-518L1
69	ED300DS71		Decal	1	...		139-518L1
70	ED300DS72		Decal	1	...		139-518L1
71	ED300DS73		Decal	1	...		139-518L1
72	ED300DS74		Decal	1	...		139-518L1
73	ED300DS75		Decal	1	...		139-518L1
74	ED300DS76		Decal	1	...		139-518L1
75	ED300DS77		Decal	1	...		139-518L1
76	ED300DS78		Decal	1	...		139-518L1
77	ED300DS79		Decal	1	...		139-518L1
78	ED300DS80		Decal	1	...		139-518L1
79	ED300DS81		Decal	1	...		139-518L1
80	ED300DS82		Decal	1	...		139-518L1
81	ED300DS83		Decal	1	...		139-518L1
82	ED300DS84		Decal	1	...		139-518L1
83	ED300DS85		Decal	1	...		139-518L1
84	ED300DS86		Decal	1	...		139-518L1
85	ED300DS87		Decal	1	...		139-518L1
86	ED300DS88		Decal	1	...		139-518L1
87	ED300DS89		Decal	1	...		139-518L1
88	ED300DS90		Decal	1	...		139-518L1
89	ED300DS91		Decal	1	...		139-518L1
90	ED300DS92		Decal	1	...		139-518L1
91	ED300DS93		Decal	1	...		139-518L1
92	ED300DS95		Decal	1	...		139-518L1
93	ED300DS96		Decal	1	...		139-518L1
94	ED300DS97		Decal	1	...		139-518L1
95	ED300DS98		Decal	1	...		139-518L1
96	ED300DS99		Decal	1	...		139-518L1
97	ED300G3		Decal	1	...		139-518L1
98	ED300G4		Decal	1	...		139-518L1
99	ED300G5		Decal	1	...		139-518L1
100	ED300G6		Decal	1	...		139-518L1
101	ED300G7		Decal	1	...		139-518L1
102	ED300J283		Decal	1	...		139-518L1
103	ED300J284		Decal	1	...		139-518L1

#	P/N	ALTERNATIVE P/N	DESCRIPTION	Q.TY	LVL	NOTE	LOG P/N
104	ED300S111		Decal	1	...		139-518L1
105	ED300S112		Decal	1	...		139-518L1
106	ED300S113		Decal	1	...		139-518L1
107	ED300S114		Decal	1	...		139-518L1
108	ED300S115		Decal	1	...		139-518L1
109	ED300S117		Decal	1	...		139-518L1
110	ED300S118		Decal	1	...		139-518L1
111	ED300S119		Decal	1	...		139-518L1
112	ED300TB1017		Decal	1	...		139-518L1
113	ED300TB1018		Decal	1	...		139-518L1
114	ED300TB157		Decal	1	...		139-518L1
115	ED300TB158		Decal	1	...		139-518L1
116	ED300TB2047		Decal	1	...		139-518L1
117	ED300TB2048		Decal	1	...		139-518L1
118	ED300TB2049		Decal	1	...		139-518L1
119	ED300TB2054		Decal	1	...		139-518L1
120	ED300TB263		Decal	1	...		139-518L1
121	ED300TB264		Decal	1	...		139-518L1
122	ED300TB265		Decal	1	...		139-518L1
123	M85049/95-12A-A		Connector mounting device	2	...		139-518L1
124	MS21043L3	MS21043-3	Nut	5	...		139-518L1
125	MS35206-225		Screw	8	...		139-518L1
126	MS35206-241		Screw	2	...		139-518L1
127	MS35207-259		Screw	12	...		139-518L1
128	MS35489-20		Grommet	1	...		139-518L1
129	NAS1149D0316K		Washer	12	...		139-518L1
130	NAS1149D0332J		Washer	8	...		139-518L1
131	NAS1149D0416J		Washer	8	...		139-518L1
132	NAS1149DN816J		Washer	2	...		139-518L1
133	NAS1190E3P6AK		Screw	3	...		139-518L1
134	NAS1190E3P8AK		Screw	3	...		139-518L1
135	NAS1802-04-7		Screw	8	...		139-518L1
136	NAS1802-3-18		Screw	2	...		139-518L1
137	NAS620C6L		Washer	2	...		139-518L1
138	3G2580A00117		PASSENGERS CABIN LINERS INSTALLATION HEELS	REF	...		-
139	3G2506P08812		Liner pass door assy RH HEELS retromod	1	(3)	-
140	3G2506P08712		Liner pass door assy LH HEELS retromod	1	(3)	-
141	AN525-832R7		Screw	10		139-518L1
142	3G2580P00912		FIBER LINERS RETROMOD FOR HEELS PLUS	REF	...		-
143	3G2580A46131		Rework window liner bonded assy LH	REF	(4)	-
144	3G2580A46231		Window liner bonded assy RH upper	REF	(5)	-

Refer also to IPD for the spares materials required to comply with the AMP DMs referenced in the accomplishment instructions.

2) CONSUMABLES

The following consumable materials, or equivalent, are necessary to accomplish this Service Bulletin:

#	SPEC./LHD CODE NUMBER	DESCRIPTION	Q.TY	NOTE	PART
145	MMM-A-132, Type II, Class 2 199-05-002 Type I, Class 2	Adhesive EA9309.3NA (C021)	AR	(6)	-
146	MMM-A-132, Type I, Class 3 199-05-002 Type II, Class 2	Adhesive EA934NA (C057)	AR	(6)	-
147	A236A03AB	Nonmetallic Channel	AR	(6)	-
148	Commercial	Adhesive tape	AR	(6)	-

Refer also to AMDI for the consumable materials required to comply with the AMP DMs referenced in the accomplishment instructions.

3) LOGISTIC MATRIX

In order to apply this Service Bulletin, the following Logistic P/N can be ordered in accordance with the applicable notes:

LOGISTIC P/N	Q.TY (PER HELO)	NOTE	PART
139-518L1	1		-
3G3350A01631	1	(1)	-
3G3350A01931	1	(1)	-
3G5310A09451	1	(2)	-
3G5310A09551	1	(2)	-
3G2506P08812	1	(3)	-
3G2506P08712	1	(3)	-

NOTES

- (1) This P/N depends upon helicopter internal painting and may be supplied as a production P/N ending with suffix -A1 or -CS01 or any combination of letters or numbers.
- (2) This P/N depends upon helicopter internal painting and may be supplied as a production P/N ending with suffix -A or -A1 or any combination of letters or numbers.
- (3) This P/N depends upon helicopter internal painting and may be supplied as a production P/N ending with suffix -A3 or -A5 or -A16 or -A18 or any combination of letters or numbers.
- (4) This item is obtained reworking the window liner bonded assy LH upper P/N 3G2580A20432 (Ref. Figures 19 and 20).
- (5) This item is obtained reworking the window liner bonded assy RH upper P/N 3G2580A20632 (Ref. Figure 21 and 22).
- (6) Item to be procured as local supply.

B. SPECIAL TOOLS

Refer to ITEP for the special tools required to comply with the AMP DM referenced in the accomplishment instructions.

C. INDUSTRY SUPPORT INFORMATION

Customization.

3. ACCOMPLISHMENT INSTRUCTIONS

GENERAL NOTES

- a) Place an identification tag on all components that are re-usable, including the attaching hardware that has been removed to gain access to the modification area and adequately protect them until their later re-use.
 - b) Shape the cables in order to prevent interference with the structure and the other existing installations, using where necessary suitable lacing cords.
 - c) Exercise extreme care during drilling operations to prevent instruments, cables and hoses damage.
 - d) After drilling, remove all swarf and sharp edges. Apply on bare metal a light film of primer unless the hole is used for ground connection.
 - e) During the installation of bonding braids or components requiring grounding, clean the surface structure in order to obtain a good ground contact.
 - f) Let adhesive cure at room temperature for at least 24 hours unless otherwise specified.
 - g) Exposed thread surface and nut must be protected using a layer of tectyl according to MIL-C-16173 grade I.
 - h) All lengths are in mm.
1. In accordance with AMP DM 39-A-00-20-00-00A-120A-A, prepare the helicopter on ground for a safe maintenance. Disconnect the battery, all electrical power sources and/or the external power supply.
 2. In accordance with AMP DM 39-A-06-41-00-00A-010A-A and with reference to Figures 1 and 8, remove all external panels, internal panels and internal liners as required to gain access to the area affected by the installation.
 3. With reference to Figures 1 thru 7, perform the HEELS structural provision P/N 3G5310A09211 as described in the following procedure:
 - 3.1 In accordance with AMP DM 39-A-52-11-01-00A-520A-A, remove the left cockpit door from the helicopter.

- 3.2 Put the left cockpit door on an applicable work table.

NOTE

If present, remove the pocket cover from the left cockpit door. Retain for later reuse.

- 3.3 Remove the LH pocket P/N 3G2510L00631 from the left cockpit door with the related hardware. Retain for later reuse.
- 3.4 With reference to Figure 1 Iso View, Figure 3 View E and Section F-F, remove and discard the two screws (if installed) from the two existing inserts.
- 3.5 With reference to Figure 2 View A, temporarily locate the HEELS support assy LH P/N 3G3350A01631 on the left pilot door panel and countermark the positions of n°5 insert holes.
- 3.6 In accordance with CSRP DM CSRP-A-51-42-00-00A-720A-D and with reference to Figures 2 View A and 3 Detail D, drill n°5 holes $\varnothing 11.48 \div 11.61$ in the previously countermarked positions and install n°5 inserts P/N NAS1836C3-13M on the left pilot door panel by means of adhesive EA934NA (C057).
- 3.7 In accordance with applicable steps of AMP DM 39-C-33-52-02-00A-921A-K and with reference to Figure 3 Section C-C, install the HEELS support assy LH P/N 3G3350A01631 by means of n°7 screws P/N A428A3C07.
- 3.8 With reference to Figure 4 View G, temporarily locate the protection LH P/N 3G5310A09451 on the left pilot door panel and countermark the positions of n°2 insert holes.
- 3.9 In accordance with CSRP DM CSRP-A-51-42-00-00A-720A-D and with reference to Figure 4 Section H-H, drill n°2 holes $\varnothing 11.48-11.61$ in the previously countermarked positions and install n°2 inserts P/N NAS1836C08-13M by means of adhesive EA934NA (C057).
- 3.10 In accordance with applicable steps of AMP DM 39-C-33-52-03-00A-921A-K and reference to Figure 4 View G and Section H-H, install the protection LH P/N 3G5310A09451 by means of n°2 screws P/N A428A08C09 and n°2 spacers P/N 3G5310A09651.
- 3.11 With reference to Figure 4 View G, temporarily locate the bracket P/N 3G5310A09751 on the left pilot door panel and countermark the positions of n°3 insert holes.
- 3.12 In accordance with CSRP DM CSRP-A-51-42-00-00A-720A-D and with reference to Figure 4 Section J-J, drill n°3 holes $\varnothing 11.48 \div 11.61$ in the previously countermarked positions and install n°3 inserts P/N NAS1836C3-13M by means of adhesive EA934NA (C057).

- 3.13 With reference to Figure 4 View G, temporarily locate the rail P/N A522A02A on the left pilot door panel and countermark the positions of n°2 insert holes.
- 3.14 In accordance with CSRP DM CSRP-A-51-42-00-00A-720A-D and with reference to Figure 4 View G, drill n°2 holes $\varnothing 11.48 \div 11.61$ in the previously countermarked positions and install n°2 inserts P/N NAS1836C06-13M by means of adhesive EA934NA (C057).
- 3.15 In accordance with AMP DM 39-A-52-11-02-00A-520A-A, remove the right cockpit door from the helicopter.
- 3.16 Put the right cockpit door on an applicable work table.

NOTE

If present, remove the pocket cover from the right cockpit door. Retain for later reuse.

- 3.17 Remove the RH pocket P/N 3G2510L00731 from the right cockpit door with the related hardware. Retain for later re-use.
- 3.18 With reference to Figure 1 Iso View, Figure 3 View E and Section F-F, remove and discard the two screws (if installed) from the two existing inserts.
- 3.19 With reference to Figure 2 View A, temporarily locate the HEELS support assy RH P/N 3G3350A01931 on the right pilot door panel and countermark the positions of n°5 insert holes.
- 3.20 In accordance with CSRP DM CSRP-A-51-42-00-00A-720A-D and with reference to Figures 2 View A and 3 Detail D, drill n°5 holes $\varnothing 11.48 \div 11.61$ in the previously countermarked positions and install n°5 inserts P/N NAS1836C3-13M on the right pilot door panel by means of adhesive EA934NA (C057).
- 3.21 In accordance with applicable steps of AMP DM 39-C-33-52-07-00A-921A-K and with reference to Figure 3 Section C-C, install the HEELS support assy RH P/N 3G3350A01931 by means of n°7 screws P/N A428A3C07.
- 3.22 With reference to Figure 4 View G, temporarily locate the protection RH P/N 3G5310A09551 on the right pilot door panel and countermark the positions of n°2 insert holes.
- 3.23 In accordance with CSRP DM CSRP-A-51-42-00-00A-720A-D and with reference to Figure 4 Section H-H, drill n°2 holes $\varnothing 11.48-11.61$ in the previously countermarked positions and install n°2 inserts P/N NAS1836C08-13M by means of adhesive EA934NA (C057).

- 3.24 In accordance with applicable steps of AMP DM 39-C-33-52-08-00A-921A-K and reference to Figure 4 View G and Section H-H, install the protection RH P/N 3G5310A09551 by means of n°2 screws P/N A428A08C09 and n°2 spacers P/N 3G5310A09651.
- 3.25 With reference to Figure 4 View G, temporarily locate the bracket P/N 3G5310A09751 on the right pilot door panel and countermark the positions of n°3 insert holes.
- 3.26 In accordance with CSRP DM CSRP-A-51-42-00-00A-720A-D and with reference to Figure 4 Section J-J, drill n°3 holes $\varnothing 11.48 \div 11.61$ in the previously countermarked positions and install n°3 inserts P/N NAS1836C3-13M by means of adhesive EA934NA (C057).
- 3.27 With reference to Figure 4 View G, temporarily locate the rail P/N A522A02A on the right pilot door panel and countermark the positions of n°2 insert holes.
- 3.28 In accordance with CSRP DM CSRP-A-51-42-00-00A-720A-D and with reference to Figure 4 View G, drill n°2 holes $\varnothing 11.48 \div 11.61$ in the previously countermarked positions and install n°2 inserts P/N NAS1836C06-13M by means of adhesive EA934NA (C057).
- 3.29 With reference to Figure 5 View S and Section W-W, temporarily locate the mounting bracket P/N 3G3350V00351 on forward lower panel and countermark the positions of n°4 insert holes.
- 3.30 In accordance to CSRP DM CSRP-A-51-42-00-00A-720A-D and with reference to Figure 5 Section W-W, drill n°4 holes $\varnothing 11.48 \div 11.61$ in the previously countermarked positions and install n°4 inserts P/N NAS1836C3-13M by means of adhesive EA934NA (C057).
- 3.31 With reference to Figure 5 View S and Section AA-AA, countermark the positions of n°2 insert holes on the forward lower panel.
- 3.32 In accordance to CSRP DM CSRP-A-51-42-00-00A-720A-D and with reference to Figure 5 Section AA-AA, drill n°2 holes $\varnothing 11.48 \div 11.61$ in the previously countermarked positions and install n°2 inserts P/N NAS1836C08-13M by means of adhesive EA934NA (C057).
- 3.33 With reference to Figure 5 Section W-W, install the mounting bracket P/N 3G3350V00351 by means of n°4 screws P/N MS35207-260 and n°4 washers P/N NAS1149D0316J.
- 3.34 With reference to Figure 6 Detail U and Section AB-AB, temporarily locate the mounting bracket P/N 3G3350V00351 on side panel RH P/N 3P5337A00231 and countermark the positions of n°4 insert holes.

- 3.35 In accordance to CSRP DM CSRP-A-51-42-00-00A-720A-D and with reference to Figure 6 Section AB-AB, drill n°4 holes \varnothing 11.48÷11.61 in the previously countermarked positions and install n°4 inserts P/N NAS1836C3-13M by means of adhesive EA934NA (C057).
- 3.36 With reference to Figure 6 Detail U and Section V-V, temporarily locate the support P/N A414A02V209E1 on side panel RH P/N 3P5337A00231 and countermark the positions of n°2 insert holes.
- 3.37 In accordance to CSRP DM CSRP-A-51-42-00-00A-720A-D and with reference to Figure 6 Section V-V, drill n°2 holes \varnothing 14.25÷14.38 in the previously countermarked positions and install n°2 inserts P/N NAS1832-3-5 by means of adhesive EA934NA (C057).
- 3.38 With reference to Figure 6 Section AB-AB, install mounting bracket P/N 3G3350V00351 on side panel RH by means of n°4 screws P/N NASM35207-260 and n°4 washers P/N NAS1149D0316J.
- 3.39 With reference to Figure 6 Section V-V, install connector support P/N A414A02V209E1 on side panel RH by means of n°2 screws P/N MS27039-1-07.
- 3.40 With reference to Figure 7 Detail AC and Section AD-AD, temporarily locate the support P/N A414A02V209E1 on side panel LH P/N 3P5335A00231 and countermark the positions of n°2 insert holes.
- 3.41 In accordance to CSRP DM CSRP-A-51-42-00-00A-720A-D and with reference to Figure 7 Section AD-AD, drill n°2 holes \varnothing 14.25÷14.38 in the previously countermarked positions and install n°2 inserts P/N NAS1832-3-5 by means of adhesive EA934NA (C057).
- 3.42 With reference to Figure 7 Section AD-AD, install connector support P/N A414A02V209E1 on side panel LH by means of n°2 screws P/N MS27039-1-07.
4. With reference to Figures 19 and 20, rework window liner bonded assy LH upper P/N 3G2580A20432 as indicated. Remark window liner bonded assy LH upper reworked as P/N 3G2580A46131.
5. With reference to Figures 21 and 22, rework window liner bonded assy RH upper P/N 3G2580A20632 as indicated. Remark window liner bonded assy RH upper reworked as P/N 3G2580A46231.
6. With reference to Figures 8 thru 18, perform the HEELS installation P/N 4G3350A00112 as described in the following procedure:
 - 6.1 With reference to Figure 9, install HEELS lights on the liner pass door assy LH P/N 3G2506P08712 as described in the following procedure:

- 6.1.1 Install rail P/N A522A02A by means of n°2 screws P/N MS35206-225.
- 6.1.2 In accordance with AMP DM 39-A-11-00-01-00A-720A-A, install decal P/N ED300TB265 in an area adjacent to previously installed rail.
- 6.1.3 In accordance with applicable steps of AMP DM 39-C-33-52-16-00A-921A-K and DM 39-C-33-52-17-00A-921A-K, install battery pack assy P/N 3G3350A01811, power supply assy P/N 3G3350A01711, clamp P/N AW001CB04H and clamp P/N AW001CB05H by means of bracket P/N 3G5310A09751, n°3 washers P/N NAS1149D0316K and n°3 screws P/N MS35207-259.
- 6.1.4 In accordance with AMP DM 39-A-11-00-01-00A-720A-A, install decal P/N ED300G3 and decal P/N ED300BT3 respectively in an area adjacent to previously installed power supply assy and battery pack assy.

NOTE

In case there is not enough room to fix junction P/N A596A04 by means of clamp P/N AW001CB05H, it is allowed to fix junction P/N A596A04 in a different but suitable position.

- 6.1.5 Fix junction P/N A596A04 by means of clamp P/N AW001CB05H.
- 6.1.6 In accordance with AMP DM 39-A-11-00-01-00A-720A-A, install decal P/N ED300TB2049 in an area adjacent to previously installed junction.
- 6.1.7 Lay down the HEEL lights C/A P/N 3G9B01A30001 (B1A300).
- 6.1.8 In accordance with with applicable steps of AMP DM 39-C-33-52-15-00A-921A-K, install the following HEELS lights by means of adhesive EA934NA (C057):
 - n°3 Light assemblies P/N 3G3350A00911;
 - Light assy P/N 3G3350A01011;
 - Light assy P/N 3G3350A01111;
 - Light assy P/N 3G3350A01211;
 - Light assy P/N 3G3350A01311;
 - Light assy P/N 3G3350A01411;
 - Light assy P/N 3G3350A01511;
 - Light assy P/N 3G3350A01611.
- 6.1.9 In accordance with AMP DM 39-A-11-00-01-00A-720A-A, install the following decals in an area adjacent to previously installed HEELS lights:

- Decal ED300DS71;
 - Decal ED300DS72;
 - Decal ED300DS73;
 - Decal ED300DS74;
 - Decal ED300DS75;
 - Decal ED300DS76;
 - Decal ED300DS77;
 - Decal ED300DS78;
 - Decal ED300DS79;
 - Decal ED300DS80.
- 6.1.10 In accordance with AMP DM 39-A-11-00-01-00A-720A-A, install decal P/N ED300S112 in an area adjacent to water sensor S112.
- 6.1.11 With reference to Figure 9 and Figure 26 wiring diagram, perform the electrical connections of C/A B1A300 between water sensors S111 and S112, splices SPG3-1 and SPG3-2.
- 6.2 With reference to Figure 10, install HEELS lights on the liner pass door assy RH P/N 3G2506P08812 as described in the following procedure:
- 6.2.1 Install rail P/N A522A02A by means of n°2 screws P/N MS35206-225.
- 6.2.2 In accordance with AMP DM 39-A-11-00-01-00A-720A-A, install decal P/N ED300TB265 in an area adjacent to previously installed rail.
- 6.2.3 In accordance with applicable steps of AMP DM 39-C-33-52-19-00A-921A-K and DM 39-C-33-52-20-00A-921A-K, install battery pack assy P/N 3G3350A01811, power supply assy P/N 3G3350A01711, clamp P/N AW001CB04H and clamp P/N AW001CB06H by means of bracket P/N 3G5310A09751, n°3 washers P/N NAS1149D0316K and n°3 screws P/N MS35207-259.
- 6.2.4 In accordance with AMP DM 39-A-11-00-01-00A-720A-A, install decal P/N ED300G4 and decal P/N ED300BT4 respectively in an area adjacent to previously installed power supply assy and battery pack assy.

NOTE

In case there is not enough room to fix junction P/N A596A04 by means of clamp P/N AW001CB05H, it is allowed to fix junction P/N A596A04 in a different but suitable position.

- 6.2.5 Fix junction P/N A596A04 by means of clamp P/N AW001CB05H.

- 6.2.6 In accordance with AMP DM 39-A-11-00-01-00A-720A-A, install decal P/N ED300TB2048 in an area adjacent to previously installed junction.
- 6.2.7 Lay down the HEEL lights C/A P/N 3G9B01B30001 (B1B300).
- 6.2.8 In accordance with with applicable steps of AMP DM 39-C-33-52-18-00A-921A-K, install the following HEELS lights by means of adhesive EA934NA (C057):
- n°2 Light assemblies P/N 3G3350A00911;
 - Light assy P/N 3G3350A01011;
 - Light assy P/N 3G3350A01111;
 - Light assy P/N 3G3350A01211;
 - Light assy P/N 3G3350A01311;
 - Light assy P/N 3G3350A01411;
 - n°2 Light assemblies P/N 3G3350A01511;
 - Light assy P/N 3G3350A01611.
- 6.2.9 In accordance with AMP DM 39-A-11-00-01-00A-720A-A, install the following decals in an area adjacent to previously installed HEELS lights:
- Decal ED300DS91;
 - Decal ED300DS92;
 - Decal ED300DS93;
 - Decal ED300DS94;
 - Decal ED300DS95;
 - Decal ED300DS96;
 - Decal ED300DS97;
 - Decal ED300DS98;
 - Decal ED300DS99;
 - Decal ED300DS100.
- 6.2.10 In accordance with AMP DM 39-A-11-00-01-00A-720A-A, install decal P/N ED300S118 in an area adjacent to water sensor S118.
- 6.2.11 With reference to Figure 10 and Figure 27 wiring diagram, perform the electrical connections of C/A B1B300 between water sensors S117 and S118, splices SPG4-1 and SPG4-2.
- 6.3 With reference to Figure 11, install HEELS lights on the copilot door as described in the following procedure:
- 6.3.1 Install rail P/N A522A02A by means of n°2 screws P/N MS35206-225.

- 6.3.2 In accordance with AMP DM 39-A-11-00-01-00A-720A-A, install decal P/N ED300TB157 in an area adjacent to previously installed rail.
- 6.3.3 In accordance with applicable steps of AMP DM 39-C-33-52-04-00A-921A-K and DM 39-C-33-52-05-00A-921A-K, install battery pack assy P/N 3G3350A01811 and power supply assy P/N 3G3350A01711 by means of bracket P/N 3G5310A09751, n°3 washers P/N NAS1149D0316K and n°3 screws P/N MS352017-259.
- 6.3.4 In accordance with AMP DM 39-A-11-00-01-00A-720A-A, install decal P/N ED300G5 and decal P/N ED300BT5 respectively in an area adjacent to previously installed power supply assy and battery pack assy.
- 6.3.5 Fix junction P/N A596A04 by means of clamp P/N AW001CB03H.
- 6.3.6 In accordance with AMP DM 39-A-11-00-01-00A-720A-A, install decal P/N ED300TB1017 in an area adjacent to previously installed junction.
- 6.3.7 Lay down the HEEL lights C/A P/N 3G9A01A26401 (A1A264).
- 6.3.8 In accordance with with applicable steps of AMP DM 39-C-33-52-01-00A-921A-K, install the following HEELS lights by means of adhesive EA934NA (C057):
- Light assy P/N 3G3350A00111;
 - Light assy P/N 3G3350A00211;
 - Light assy P/N 3G3350A00311;
 - Light assy P/N 3G3350A00411;
 - Light assy P/N 3G3350A00511.
- 6.3.9 In accordance with AMP DM 39-A-11-00-01-00A-720A-A, install the following decals in an area adjacent to previously installed HEELS lights:
- Decal ED300DS61;
 - Decal ED300DS62;
 - Decal ED300DS63;
 - Decal ED300DS64;
 - Decal ED300DS65.
- 6.3.10 In accordance with AMP DM 39-A-11-00-01-00A-720A-A, install decal P/N ED300S115 in an area adjacent to water sensor S115.
- 6.3.11 With reference to Figure 11 and Figure 24 wiring diagram, perform the electrical connections of C/A A1A264 between water sensor S115, splices SPG5-1 and SPG5-2.

NOTE

If necessary is allowed to trim the pocket previously removed to prevent interference between the pocket and the battery pack and power supply assemblies.

- 6.3.12 Re-install the pocket and the pocket cover on the copilot door by means of related hardware previously removed.
- 6.4 With reference to Figure 12, install HEELS lights on the pilot door as described in the following procedure:
- 6.4.1 Install rail P/N A522A02A by means of n°2 screws P/N MS35206-225.
- 6.4.2 In accordance with AMP DM 39-A-11-00-01-00A-720A-A, install decal P/N ED300TB158 in an area adjacent to previously installed rail.
- 6.4.3 In accordance with applicable steps of AMP DM 39-C-33-52-09-00A-921A-K and 39-C-33-52-10-00A-921A-K, install battery pack assy P/N 3G3350A01811 and power supply assy P/N 3G3350A01711 by means of bracket P/N 3G5310A09751, n°3 washers P/N NAS1149D0316K and n°3 screws P/N MS352017-259.
- 6.4.4 In accordance with AMP DM 39-A-11-00-01-00A-720A-A, install decal P/N ED300G6 and decal P/N ED300BT6 respectively in an area adjacent to previously installed power supply assy and battery pack assy.
- 6.4.5 Fix junction P/N A596A04 by means of clamp P/N AW001CB05H.
- 6.4.6 In accordance with AMP DM 39-A-11-00-01-00A-720A-A, install decal P/N ED300TB1018 in an area adjacent to previously installed junction.
- 6.4.7 Lay down the HEEL lights C/A P/N 3G9A01B27501 (A1B275).
- 6.4.8 In accordance with applicable steps of AMP DM 39-C-33-52-06-00A-921A-K install the following HEELS lights by means of adhesive EA934NA (C057):
- Light assy P/N 3G3350A00111;
 - Light assy P/N 3G3350A00211;
 - Light assy P/N 3G3350A00311;
 - Light assy P/N 3G3350A00411;
 - Light assy P/N 3G3350A00511.
- 6.4.9 In accordance with AMP DM 39-A-11-00-01-00A-720A-A, install the following decals in an area adjacent to previously installed HEELS lights:
- Decal ED300DS81;

- Decal ED300DS82;
 - Decal ED300DS83;
 - Decal ED300DS84;
 - Decal ED300DS85.
- 6.4.10 In accordance with AMP DM 39-A-11-00-01-00A-720A-A, install decal P/N ED300S119 in an area adjacent to water sensor S119.
- 6.4.11 With reference to Figure 12 and Figure 25 wiring diagram, perform the electrical connections of C/A A1B275 between water sensor S119, splices SPG6-1 and SPG6-2.

NOTE

If necessary is allowed to trim the pocket previously removed to prevent interference between the pocket and the battery pack and power supply assemblies.

- 6.4.12 Re-install the pocket and the pocket cover on the pilot door by means of related hardware previously removed.
- 6.5 With reference to Figure 15 View G, at location n°17, install standoff P/N A366A3E12C by means of adhesive EA9309.3NA (C021) and install clamp P/N AW001CB04H by means of washer P/N NAS1149D0332J and nut P/N MS21043L03.
- 6.6 With reference to Figure 15 View G, install edgings P/N A236A03AB in the indicated position.
- 6.7 With reference to Figure 15 View G and Section J-J, at location n°16, install support P/N AW001CL509-N6 by means of necessary rivet and washer P/N NAS620C6L.
- 6.8 With reference to Figure 15 View G, at location n°15, install support P/N W001CL005C01-X1 by means of adhesive EA9309.3NA (C021).

NOTE

The following step 6.9 is applicable ONLY to helicopter equipped with kit AVCS.

- 6.9 With reference to 14 View looking down floor, at locations n°11-12-13-14, remove existing supports and install n°4 standoff P/N AW001CL001-N6 by means of adhesive EA9309.3NA (C021).

NOTE

The following steps 6.10 is applicable ONLY to helicopter NOT equipped with kit AVCS.

- 6.10 With reference to Figure 13 View looking down floor, at locations n°4-5-6, install n°4 standoff P/N A388A3E12C by means of adhesive EA9309.3NA (C021) and install n°3 clamp P/N AW001CB04H by means of n°3 washers P/N NAS1149D0332J and n°3 screws P/N NAS1190E3P6AK.
- 6.11 With reference to Figure 16 View looking down center floor, at locations n°24-25, install n°2 supports P/N AW001CL001-N6 by means of adhesive EA9309.3NA (C021).
- 6.12 With reference to Figure 16 View looking down center floor, at locations n°22-23, remove existing screw and install on existing hardware n°2 clamps P/N AW001CB04H by means of n°2 screws P/N NAS1802-3-18.

NOTE

The following step 6.13 is applicable ONLY to helicopter equipped with kit AVCS.

- 6.13 With reference to Figure 16 View looking down floor, at locations n°7-8-9-10, remove existing supports and install n°4 standoff P/N AW001CL001-N6 by means of adhesive EA9309.3NA (C021).

NOTE

The following step 6.14 is applicable ONLY to helicopter NOT equipped with kit AVCS.

- 6.14 With reference to Figure 13 View looking down floor, at locations n°1-2-3, install n°3 standoff P/N A366A3E12C by means of adhesive EA9309.3NA (C021) and install clamps n°3 P/N AW001CB06H by means of n°3 washers P/N NAS1149D0332J and n°3 nuts P/N MS21043L03.
- 6.15 With reference to Figure 15 View H, at location n°18, install support P/N W001CL005C01-X1 by means of adhesive EA9309.3NA (C021).
- 6.16 With reference to Figure 15 View H, install edging P/N A236A03AB in the indicated position.
- 6.17 With reference to Figure 15 View H and Section J-J, at location n°19, install support P/N AW001CL509-N6 by means of necessary rivet and washer P/N NAS620C6L.

- 6.18 With reference to Figure 15 View H, at location n°20, install standoff P/N A366A3E12C by means of adhesive EA9309.3NA (C021) and install clamp P/N AW001CB05H by means of washer P/N NAS1149D0332J and nut P/N MS21043L03.
- 6.19 With reference to Figure 15 View H, at location n°21, install support P/N AW001CL001-N6 by means of adhesive EA9309.3NA (C021).
- 6.20 In accordance with applicable steps of AMP DM 39-C-33-52-13-00A-921A-K and with reference to Figure 15 View H, install battery pack assy P/N 3G3350A01811 on mounting bracket P/N 3G3350V00351.
- 6.21 In accordance with AMP DM 39-A-11-00-01-00A-720A-A and with reference to Figure 15 View H, install decal P/N ED300BT7 in an area adjacent to previously installed battery pack assy.
- 6.22 In accordance with AMP DM 39-A-11-00-01-00A-720A-A and with reference to Figure 15 View H, install decal P/N ED300TB2054 in an area adjacent to junction TB2054.
- 6.23 In accordance with applicable steps of AMP DM 39-C-33-52-14-00A-921A-K and with reference to Figure 16 View looking down center floor, install power supply assy P/N 3G3350A01711 on mounting bracket P/N 3G3350V00351.
- 6.24 In accordance with AMP DM 39-A-11-00-01-00A-720A-A and with reference to Figure 16 View looking down center floor, install decal P/N ED300G7 in an area adjacent to previously installed power supply assy.
- 6.25 In accordance with AMP DM 39-A-11-00-01-00A-720A-A and with reference to Figure 16 View looking down center floor, install decal P/N ED300TB2047 in an area adjacent to junction TB2047.
- 6.26 With reference to Figure 16 View looking down center floor, install rail P/N A522A02A by means of n°2 screws P/N MS35206-241 and n°2 washers P/N NAS1149DN816J.
- 6.27 In accordance with AMP DM 39-A-11-00-01-00A-720A-A and with reference to Figure 16 View looking down center floor, install decal P/N ED300TB263 in an area adjacent to previously installed rail.

NOTE

Use edging P/N A236A on metallic edges which can damage cable assemblies and where abrasion may occur.

Use braided tubing P/N A582A where cable assemblies chafing or contact with structure may occur.

Secure the cables by means of previously installed fixing hardware and existing hardware. If necessary replace existing clamps with suitable clamps.

- 6.28 With reference to Figures 13 or 14, 15, 16, lay down the below C/As following the existing route unless otherwise indicated on the figures:
- HEEL lights C/A P/N 3G9B01A29801 (B1A298);
 - HEEL lights C/A P/N 3G9B01B29801 (B1B298);
 - HEEL lights C/A P/N 3G9B01B32601 (B1B326);

NOTE

Where necessary and in accordance with AMP DM 39-A-20-10-08-00A-622A-A crimp on wires the required electrical contacts (Refer to table on Figure 28) by means of proper crimping tool.

- 6.29 With reference to Figure 13 or 14, 15, 16 and Figure 23 wiring diagram, perform the electrical connections of C/A B1A298 between sectioning connector J283, terminal board TB263, splices SPG7-1 and SPG7-2.
- 6.30 With reference to Figure 13 or 14, 15, 16 and Figure 23 wiring diagram, perform the electrical connections of C/A B1B298 between sectioning connector J284, terminal board TB263, splices SPG7-1 and SPG7-2.
- 6.31 With reference to Figure 13 or 14, 15, 16 and Figure 23 wiring diagram, perform the electrical connections of C/A B1B326 between junctions TB2047 and TB2054.
- 6.32 With reference to Figure 15 View G, install sectioning connector J283 by means of the flange P/N M85049/95-12A-A, n°4 screws P/N NAS1802-04-7 and n°4 washers P/N NAS1149DN416J.
- 6.33 In accordance with AMP DM 39-A-11-00-01-00A-720A-A and with reference to Figure 15 View G, install decal P/N ED300J283 in an area adjacent to previously installed connector.

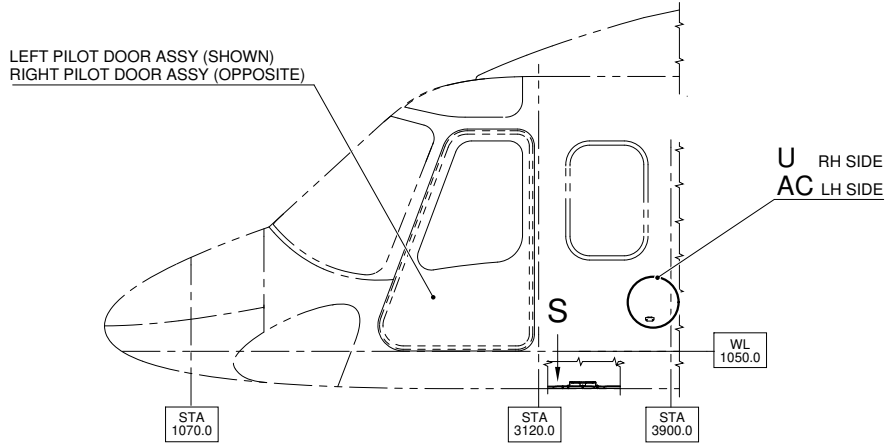
- 6.34 With reference to Figure 15 View H, install sectioning connector J284 by means of the flange P/N M85049/95-12A-A, n°4 screws P/N NAS1802-04-7 and n°4 washers P/N NAS1149DN416J.
- 6.35 In accordance with AMP DM 39-A-11-00-01-00A-720A-A and with reference to Figure 15 View H, install decal P/N ED300J284 in an area adjacent to previously installed connector.
- 6.36 In accordance with applicable steps of AMP DM 39-C-33-52-12-00A-921A-K and with reference to Figure 17, install HEELS lights on the window liner bonded assy RH upper reworked P/N 3G2580A46231 as described in the following procedure:
- 6.36.1 At locations n°26-27-28-29-30, install n°5 supports P/N AW001CL000A-X3 on the internal side of the window liner assy RH upper by means of adhesive EA9309.3NA (C021).
- 6.36.2 At locations n°34-35, install n°2 supports P/N AW001CL009-CM on the internal side of the window liner assy RH upper by means of adhesive EA9309.3NA (C021).
- 6.36.3 At locations n°31-32-33, install n°3 supports P/N AW001CL000A-X3 on the internal side of the window liner assy RH lower by means of adhesive EA9309.3NA (C021).
- 6.36.4 Install HEELS lights P/N 3G3350A00611 on the window liner bonded assy RH upper reworked P/N 3G2580A46231.
- 6.36.5 In accordance with AMP DM 39-A-11-00-01-00A-720A-A, install the following decals in an area adjacent to previously installed HEELS lights:
- Decal ED300DS86;
 - Decal ED300DS87;
 - Decal ED300DS88;
 - Decal ED300DS89;
 - Decal ED300DS90.
- 6.36.6 In accordance with AMP DM 39-A-11-00-01-00A-720A-A, install decal P/N ED300S114 in an area adjacent to water sensor S114.
- 6.37 In accordance with applicable steps of AMP DM 39-C-33-52-11-00A-921A-K and with reference to Figure 18, install HEELS lights on the window liner bonded assy LH upper reworked P/N 3G2580A46131 as described in the following procedure:
- 6.37.1 At locations n°36-37-38-39-40, install n°5 supports P/N AW001CL000A-X3 on the internal side of the window liner assy LH upper by means of adhesive EA9309.3NA (C021).

- 6.37.2 At locations n°44-35, install n°2 supports P/N AW001CL009-CM on the internal side of the window liner assy LH upper by means of adhesive EA9309.3NA (C021).
- 6.37.3 At locations n°41-42-43, install n°3 supports P/N AW001CL000A-X3 on the internal side of the window liner assy LH lower by means of adhesive EA9309.3NA (C021).
- 6.37.4 Install HEELS lights P/N 3G3350A00611 on the window liner bonded assy LH upper reworked P/N 3G2580A46131.
- 6.37.5 In accordance with AMP DM 39-A-11-00-01-00A-720A-A, install the following decals in an area adjacent to previously installed HEELS lights:
- Decal ED300DS66;
 - Decal ED300DS67;
 - Decal ED300DS68;
 - Decal ED300DS69;
 - Decal ED300DS70.
- 6.37.6 In accordance with AMP DM 39-A-11-00-01-00A-720A-A, install decal P/N ED300S114 in an area adjacent to water sensor S113.
- 6.38 Perform a pin-to-pin continuity check of all the electrical connection made.
7. In accordance with AMP DM 39-A-06-41-00-00A-010A-A, re-install all external panels, internal panels and internal liners previously removed.
8. In accordance with AMP DM 39-A-52-11-01-00A-720A-A, re-install the left cockpit door on the helicopter.
9. In accordance with AMP DM 39-A-52-11-02-00A-720A-A, re-install the right cockpit door on the helicopter.
10. In accordance with AMP DM 39-C-33-52-00-00A-340A-K, perform the function test of the emergency exit lighting system.
11. In accordance with weight and balance changes, update the Chart A (see Rotorcraft Flight Manual, Part II, section 6).
12. Return the helicopter to flight configuration and record for compliance with this Service Bulletin on the helicopter logbook.
13. Send the attached compliance form to the following mail box:

engineering.support.lhd@leonardocompany.com

As an alternative, gain access to My Communications section on Leonardo WebPortal and compile the "Service Bulletin Application Communication".

3G5310A09211
HEELS
STRUCTURAL PROVISION



LHS EXTERNAL VIEW

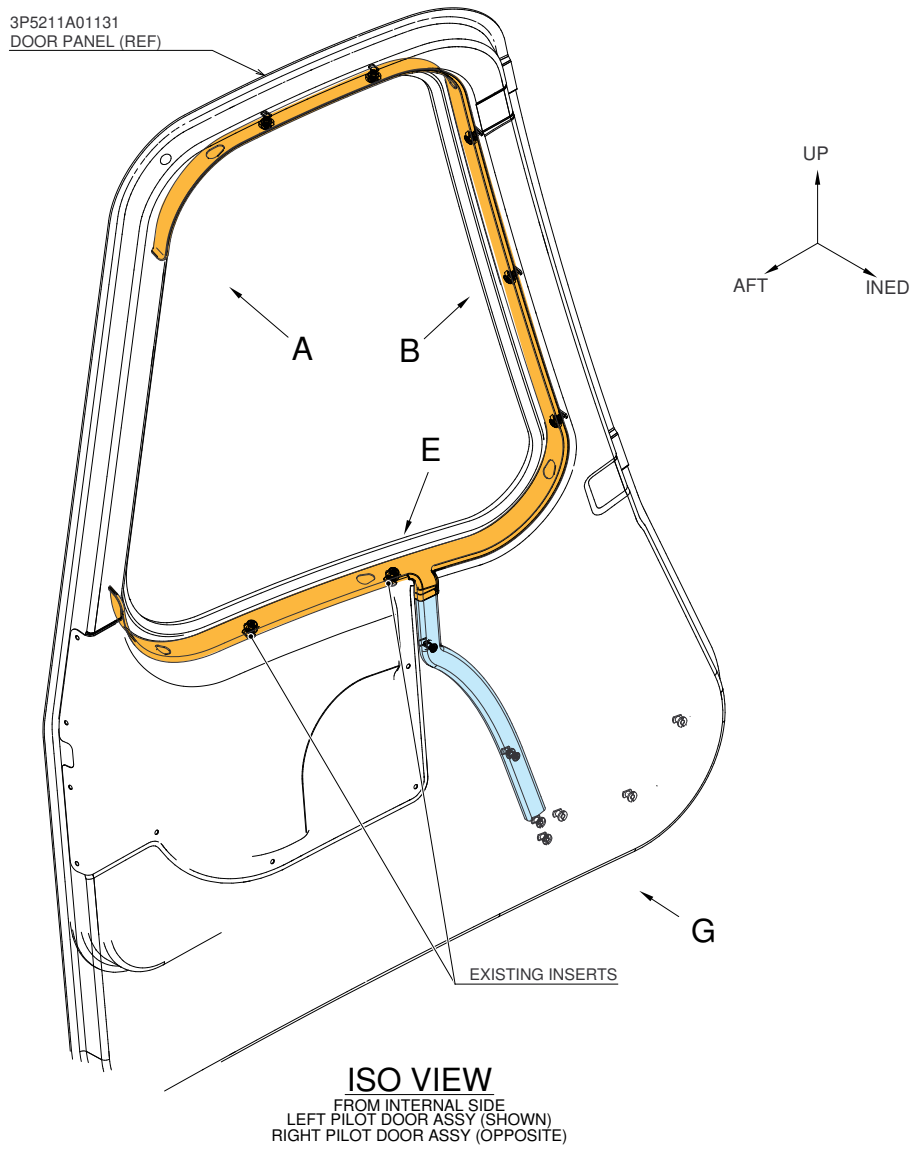
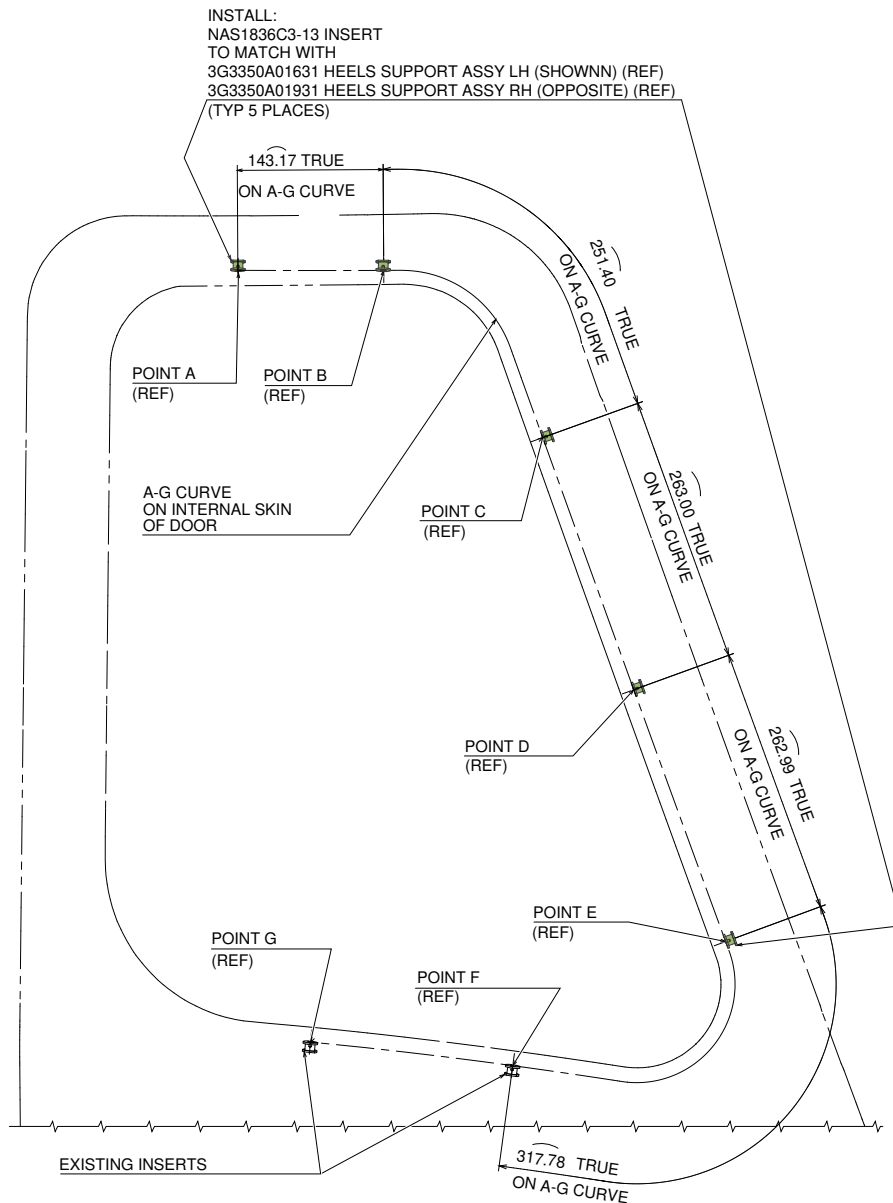


Figure 1

POINT (ON INTERNAL SKIN OF DOOR)	COORDINATES (REF)			
	X	Y/LHS	Y/RHS	Z
A	2887.00	-998.14	998.14	2301.73
B	2745.00	-979.25	979.25	2300.66
C	2587.81	-987.94	987.94	2137.95
D	2495.61	-1021.11	1021.11	1893.91
E	2403.36	-1044.66	1044.66	1648.77
F(REF)	2609.78	-1085.69	1085.69	1529.41
G(REF)	2807.80	-1100.53	1100.53	1552.69



VIEW A
 LEFT PILOT DOOR ASSY (SHOWN)
 RIGHT PILOT DOOR ASSY (OPPOSITE)
 HEELS SUPPORT ASSY AND SCREWS REMOVED FOR CLARITY

Figure 2

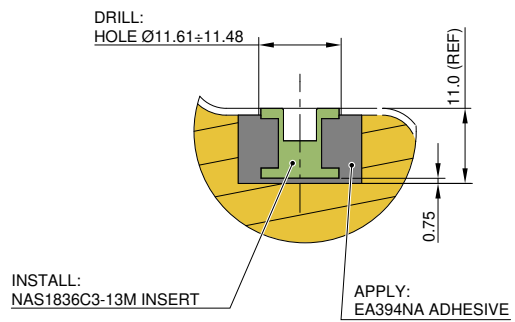
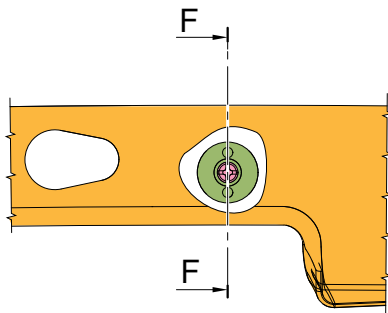
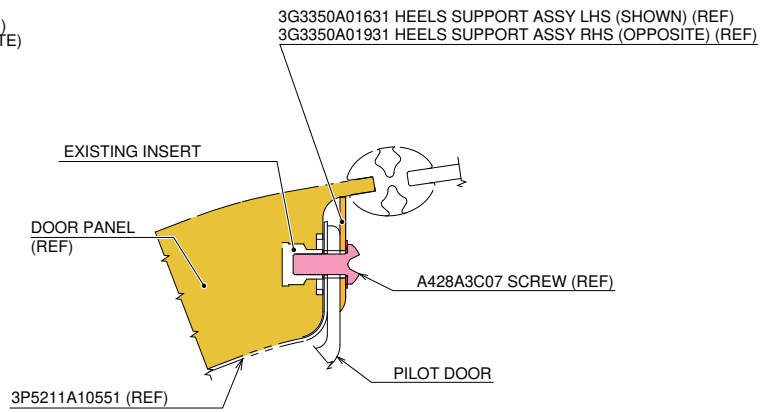
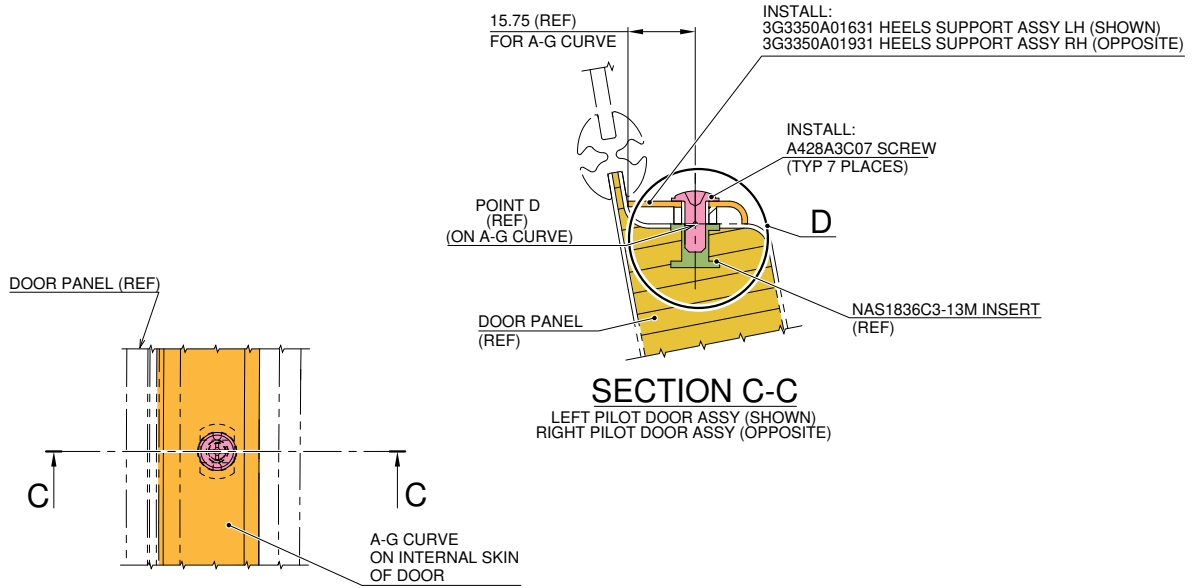
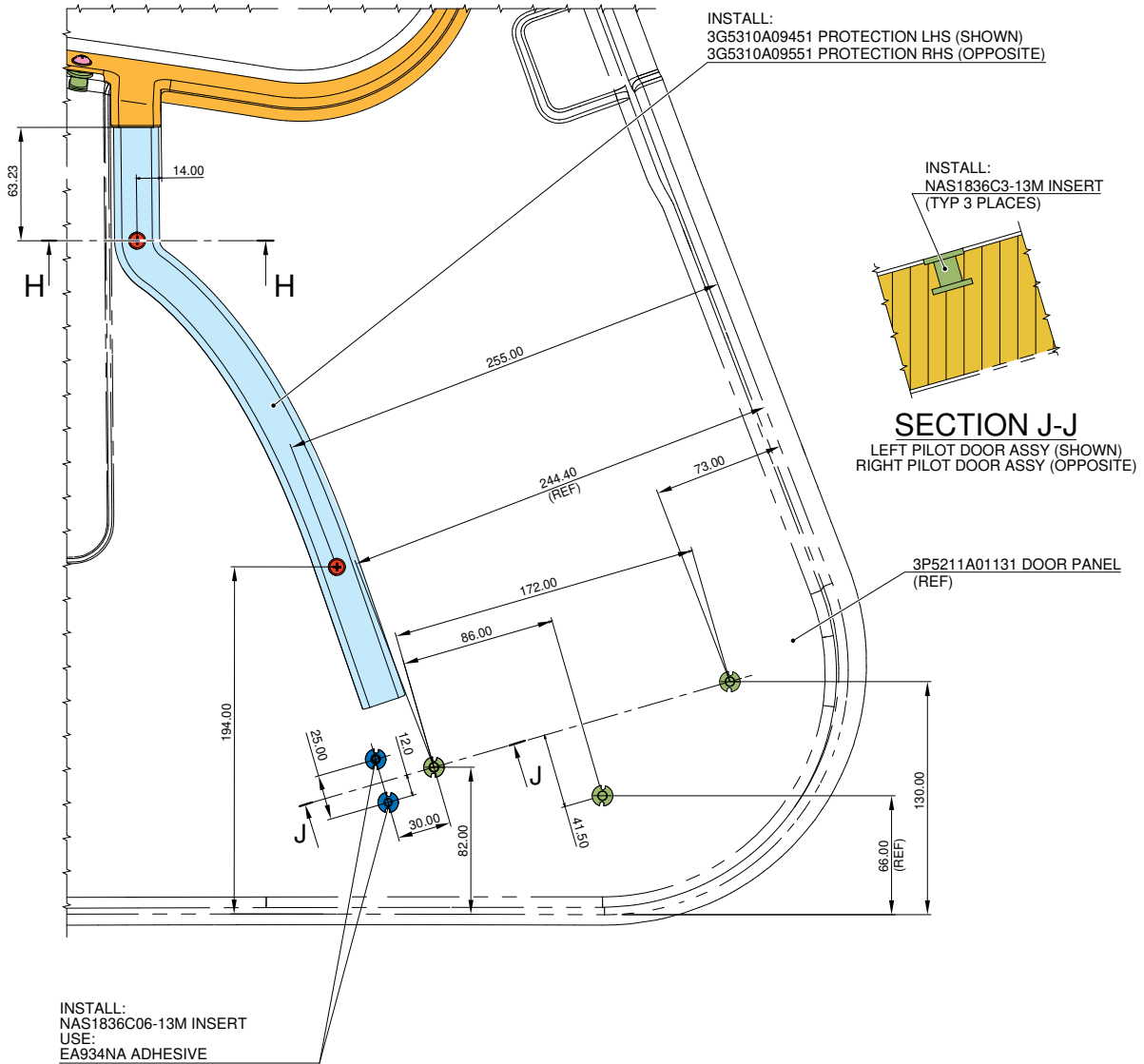


Figure 3



VIEW G

LEFT PILOT DOOR ASSY (SHOWN)
RIGHT PILOT DOOR ASSY (OPPOSITE)

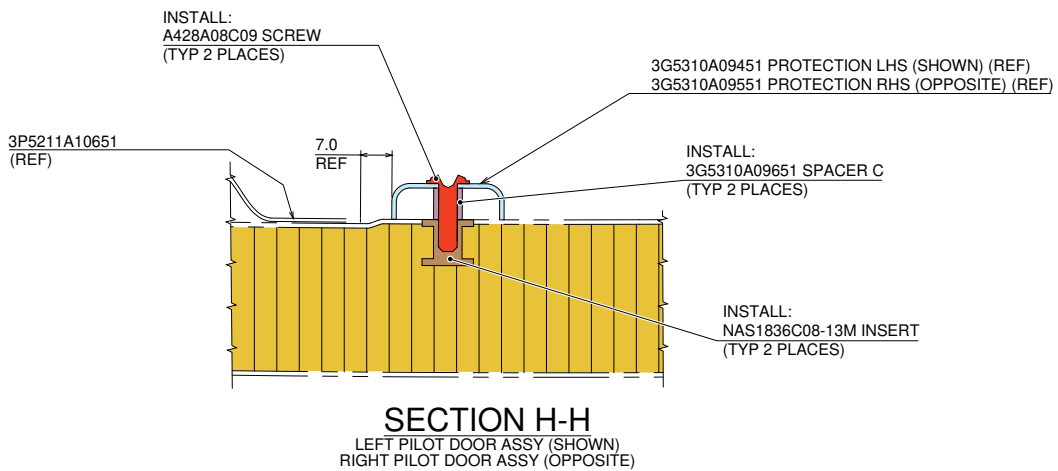
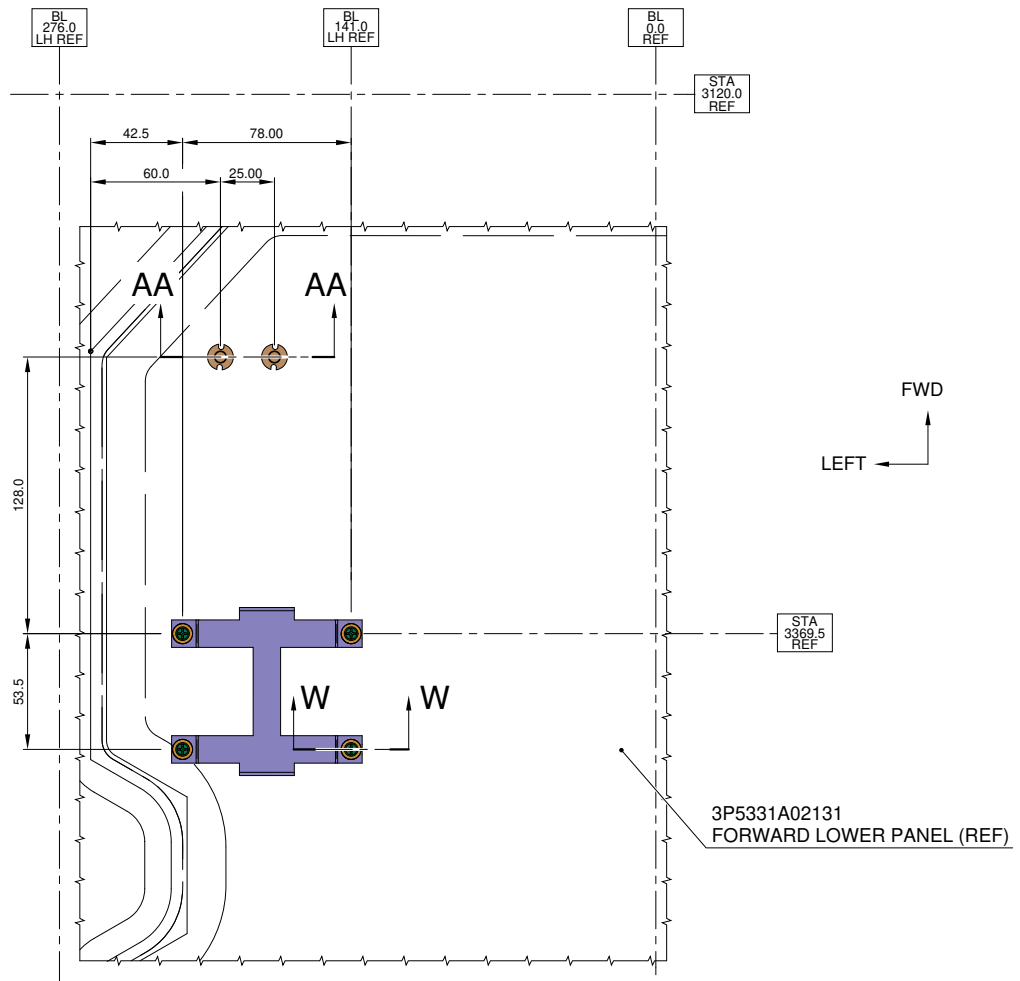


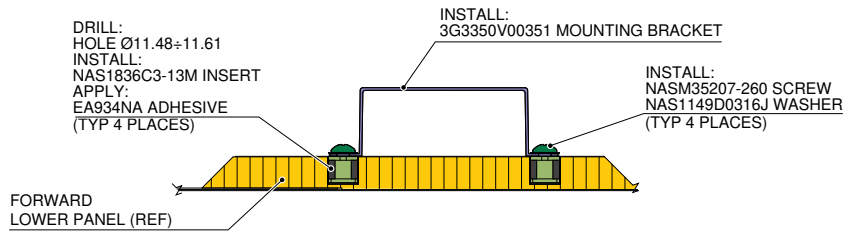
Figure 4



VIEW S

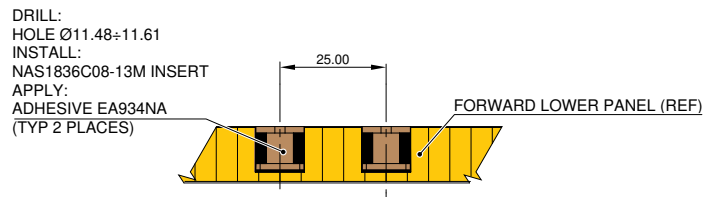
ROTATED 90°CW

STRUCTURES AND SYSTEMS ARE PARTIALLY OMITTED FOR BETTER CLARITY PURPOSE



SECTION W-W

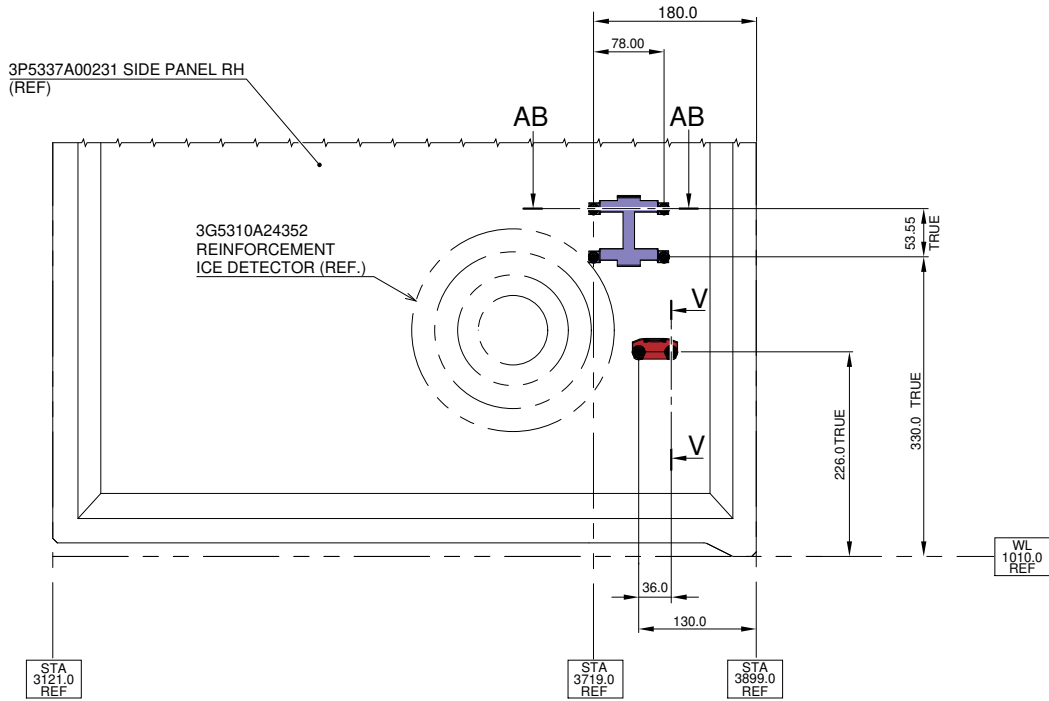
STRUCTURES AND SYSTEMS ARE PARTIALLY OMITTED FOR BETTER CLARITY PURPOSE



SECTION AA-AA

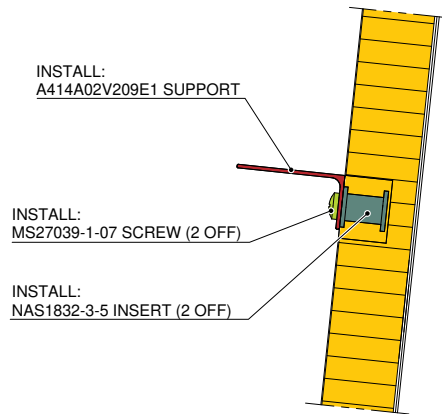
STRUCTURES AND SYSTEMS ARE PARTIALLY OMITTED FOR BETTER CLARITY PURPOSE

Figure 5



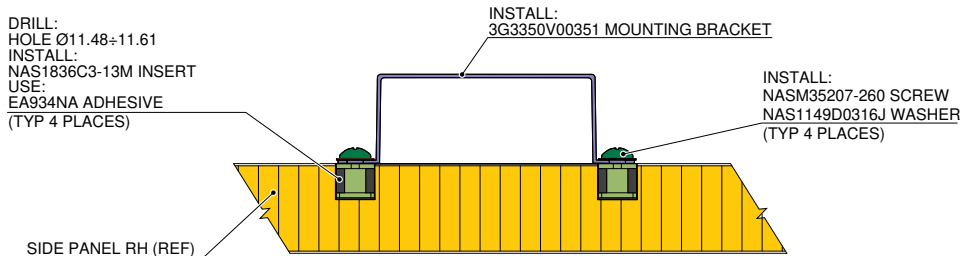
DETAIL U

VIEW LOOKING OUTBOARD RH SIDE ONLY
STRUCTURES AND SYSTEMS ARE PARTIALLY
OMITTED FOR BETTER CLARITY PURPOSE



SECTION V-V

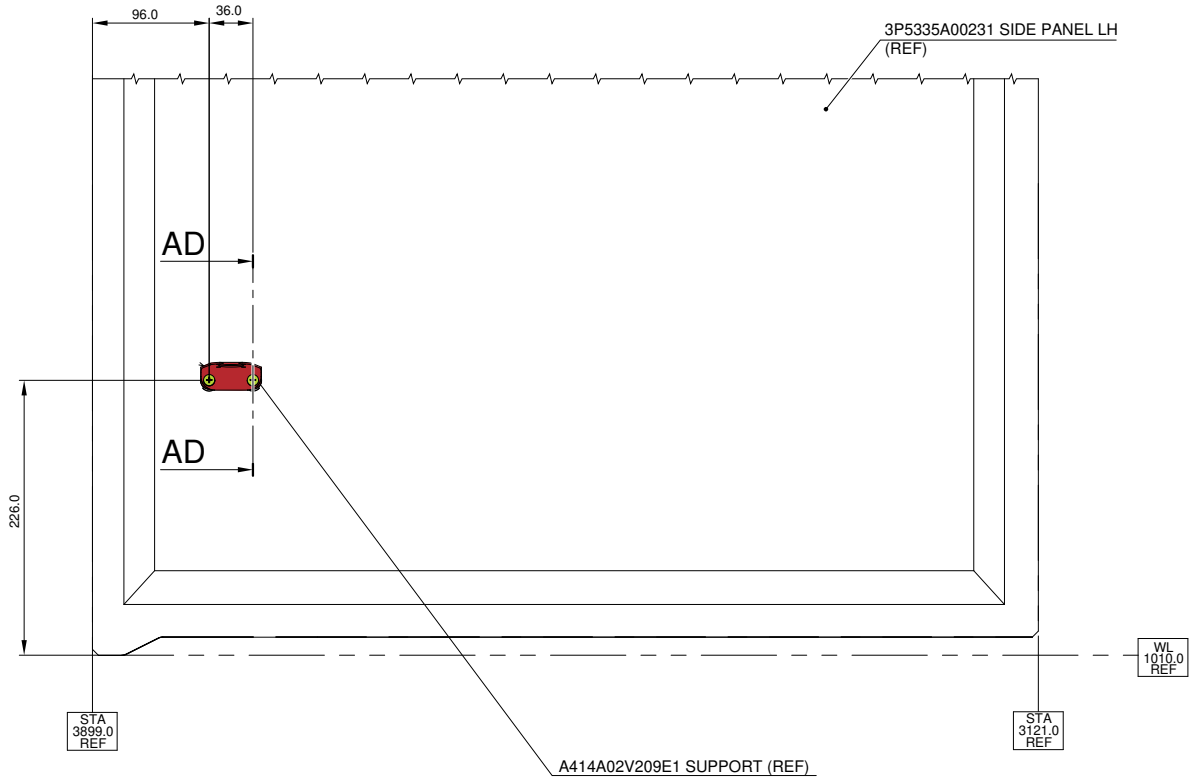
STRUCTURES AND SYSTEMS ARE PARTIALLY
OMITTED FOR BETTER CLARITY PURPOSE



SECTION AB-AB

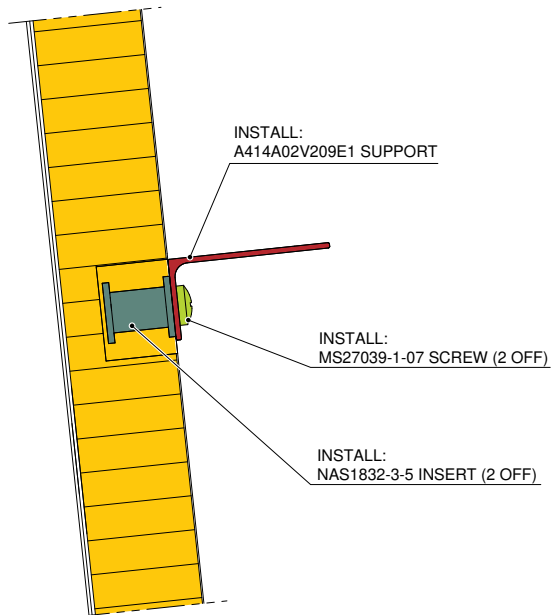
STRUCTURES AND SYSTEMS ARE PARTIALLY
OMITTED FOR BETTER CLARITY PURPOSE

Figure 6



DETAIL AC

VIEW LOOKING OUTBOARD LH SIDE
STRUCTURES AND SYSTEMS ARE PARTIALLY
OMITTED FOR BETTER CLARITY PURPOSE



SECTION AD-AD

STRUCTURES AND SYSTEMS ARE PARTIALLY
OMITTED FOR BETTER CLARITY PURPOSE

Figure 7

4G3350A00112
HEELS INSTALLATION

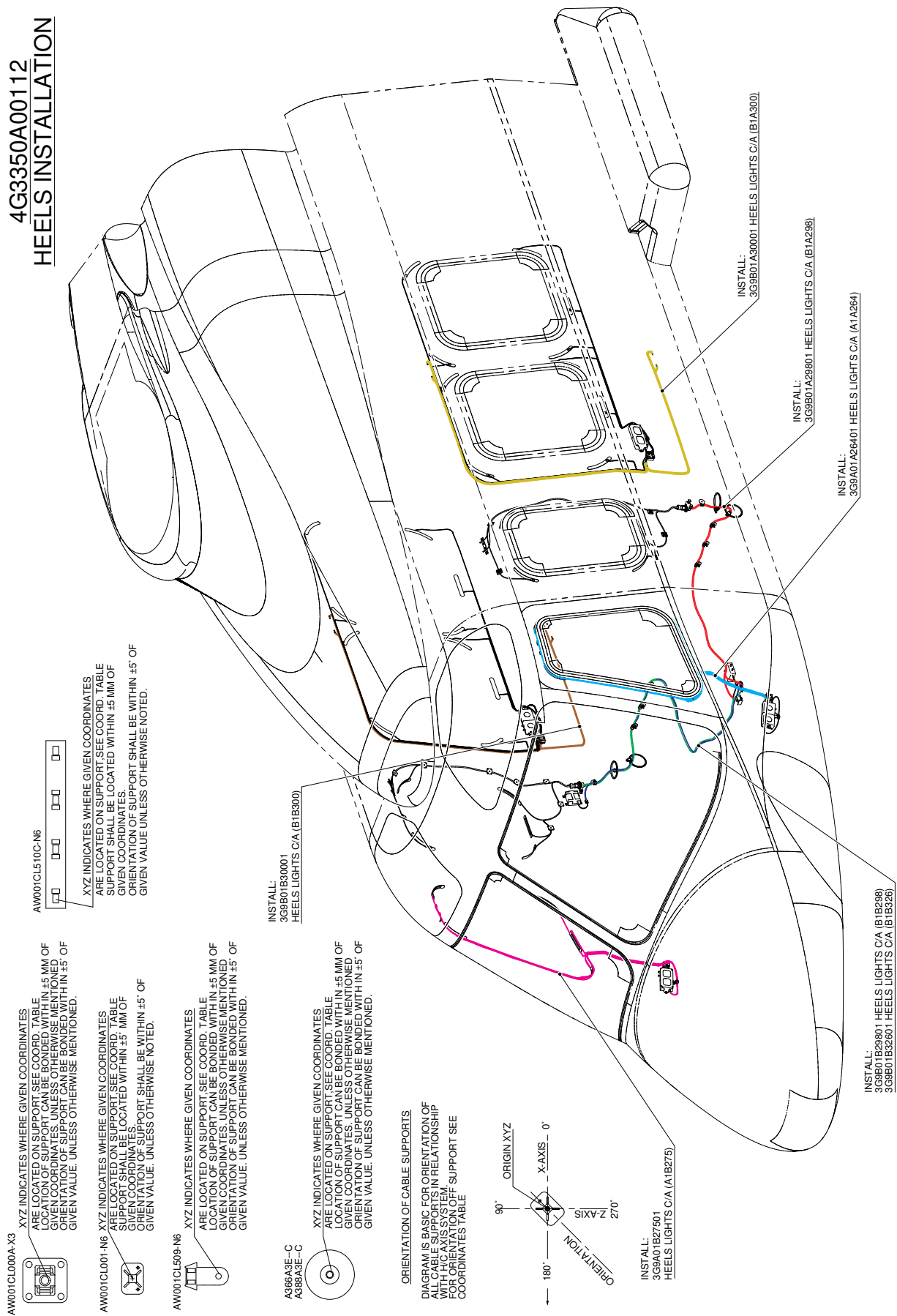
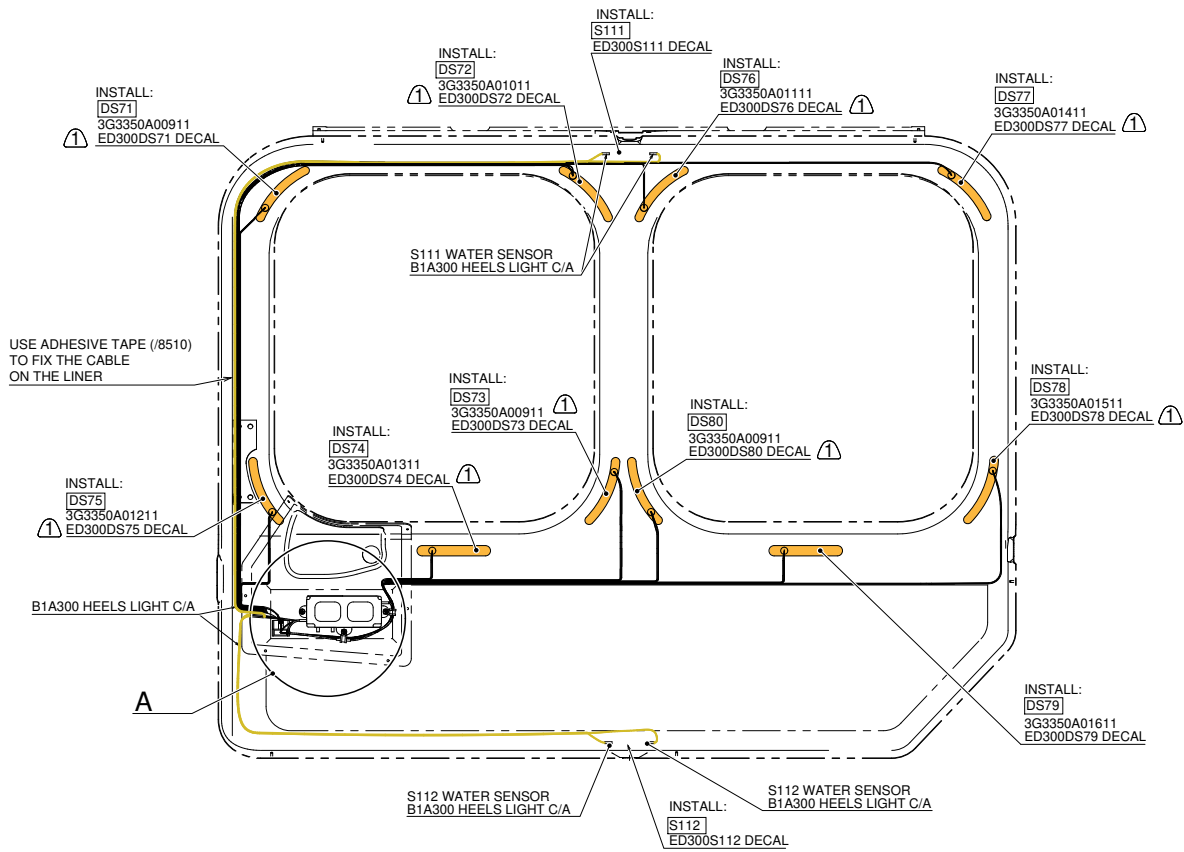
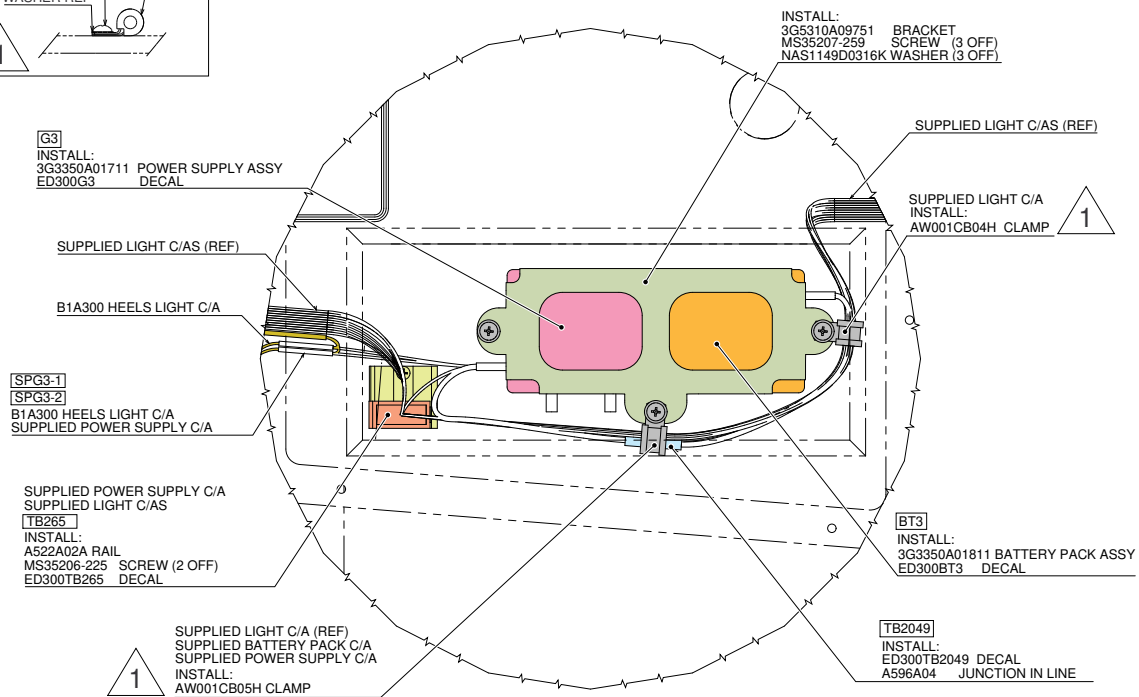
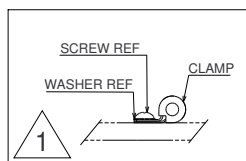


Figure 8



VIEW LOOKING PASSENGER DOOR LH SIDE FROM EXTERNAL SIDE

STRUCTURES AND SYSTEMS ARE PARTIALLY OMITTED FOR BETTER CLARITY PURPOSE



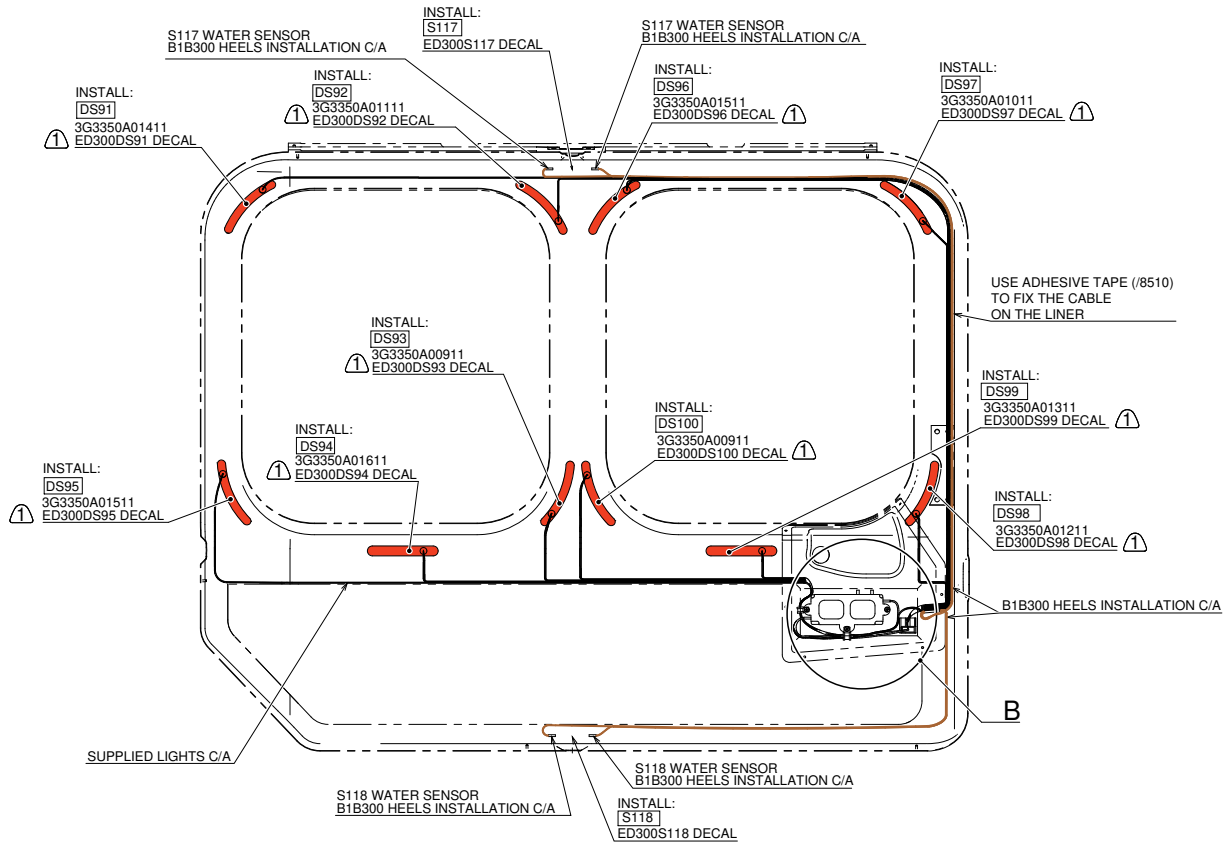
NOTE:

1 APPLY EA934NA ADHESIVE

DETAIL A

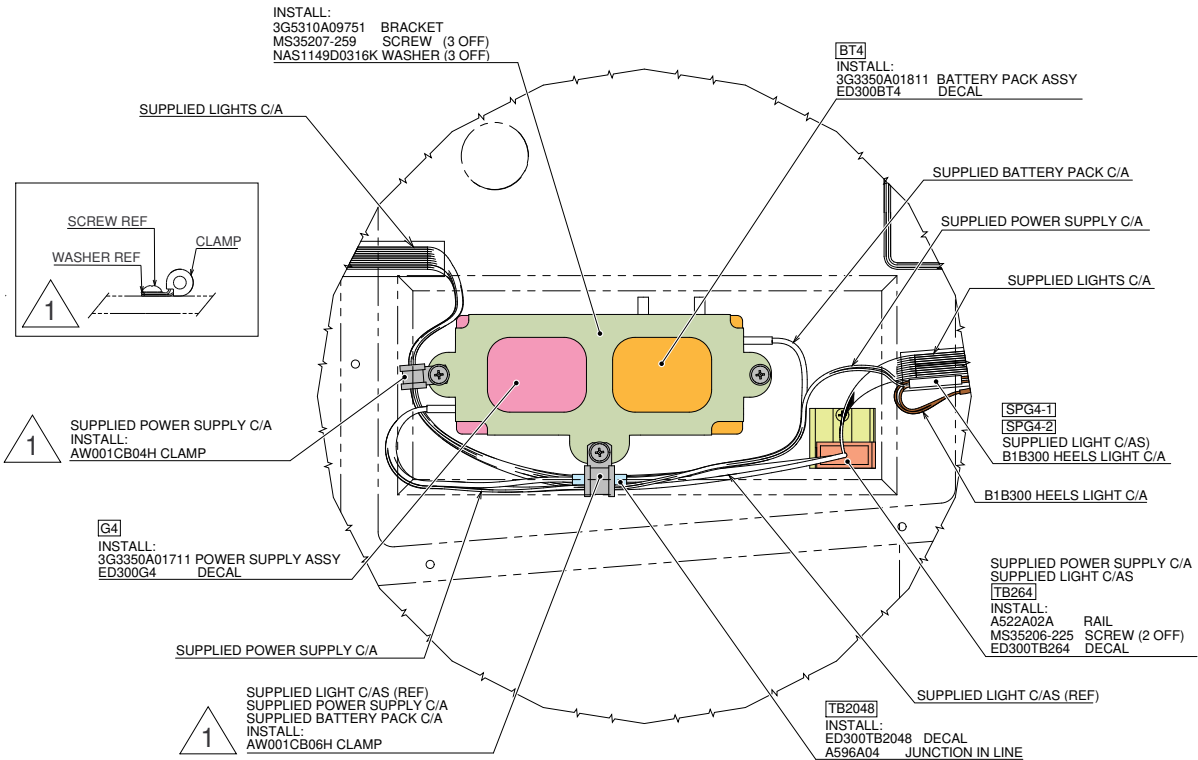
STRUCTURES AND SYSTEMS ARE PARTIALLY OMITTED FOR BETTER CLARITY PURPOSE

Figure 9



VIEW LOOKING PASSENGER DOOR RH SIDE FROM EXTERNAL SIDE

STRUCTURES AND SYSTEMS ARE PARTIALLY OMITTED FOR BETTER CLARITY PURPOSE



NOTE:

① APPLY EA934NA ADHESIVE

DETAIL B

STRUCTURES AND SYSTEMS ARE PARTIALLY OMITTED FOR BETTER CLARITY PURPOSE

Figure 10

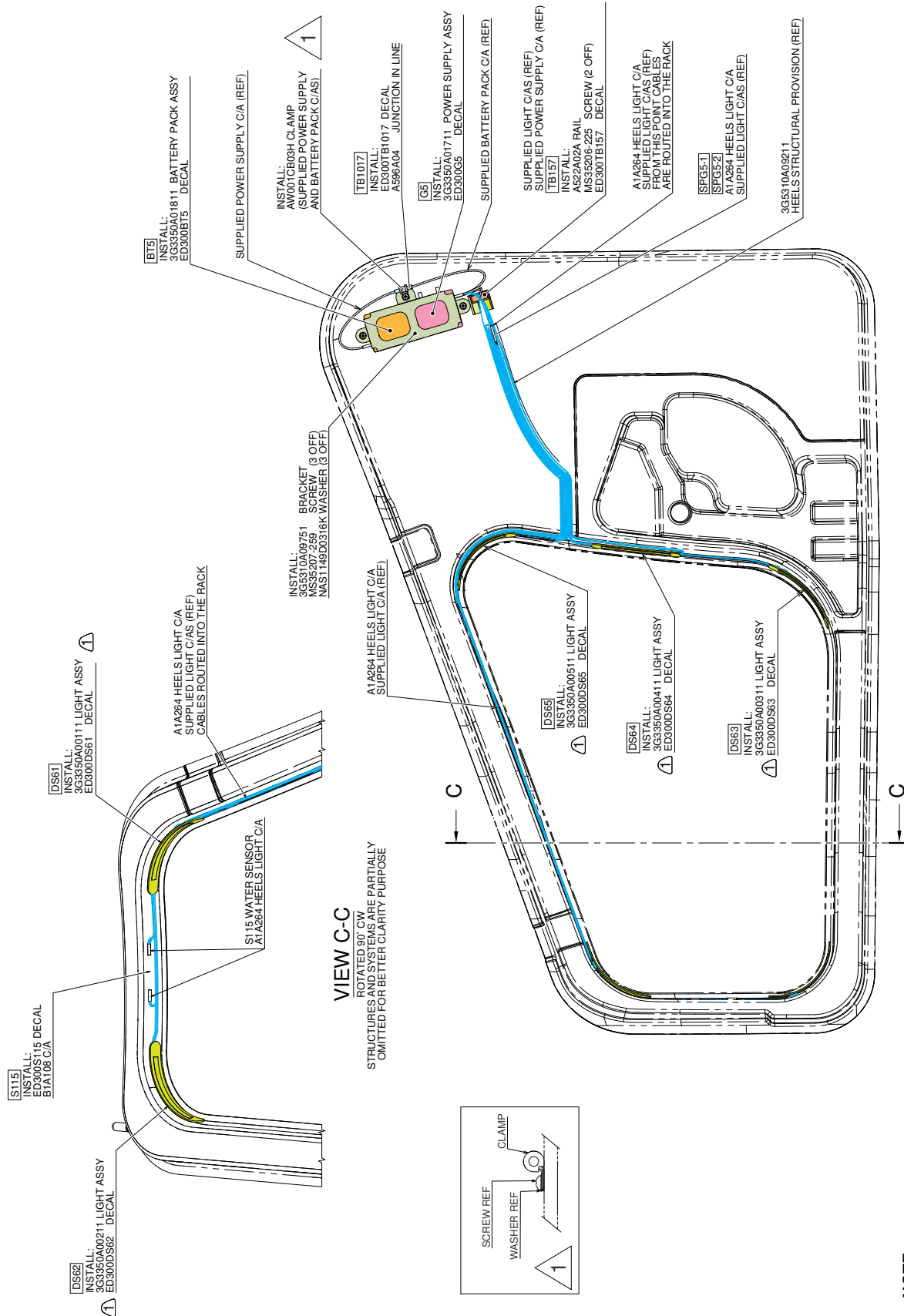


Figure 11

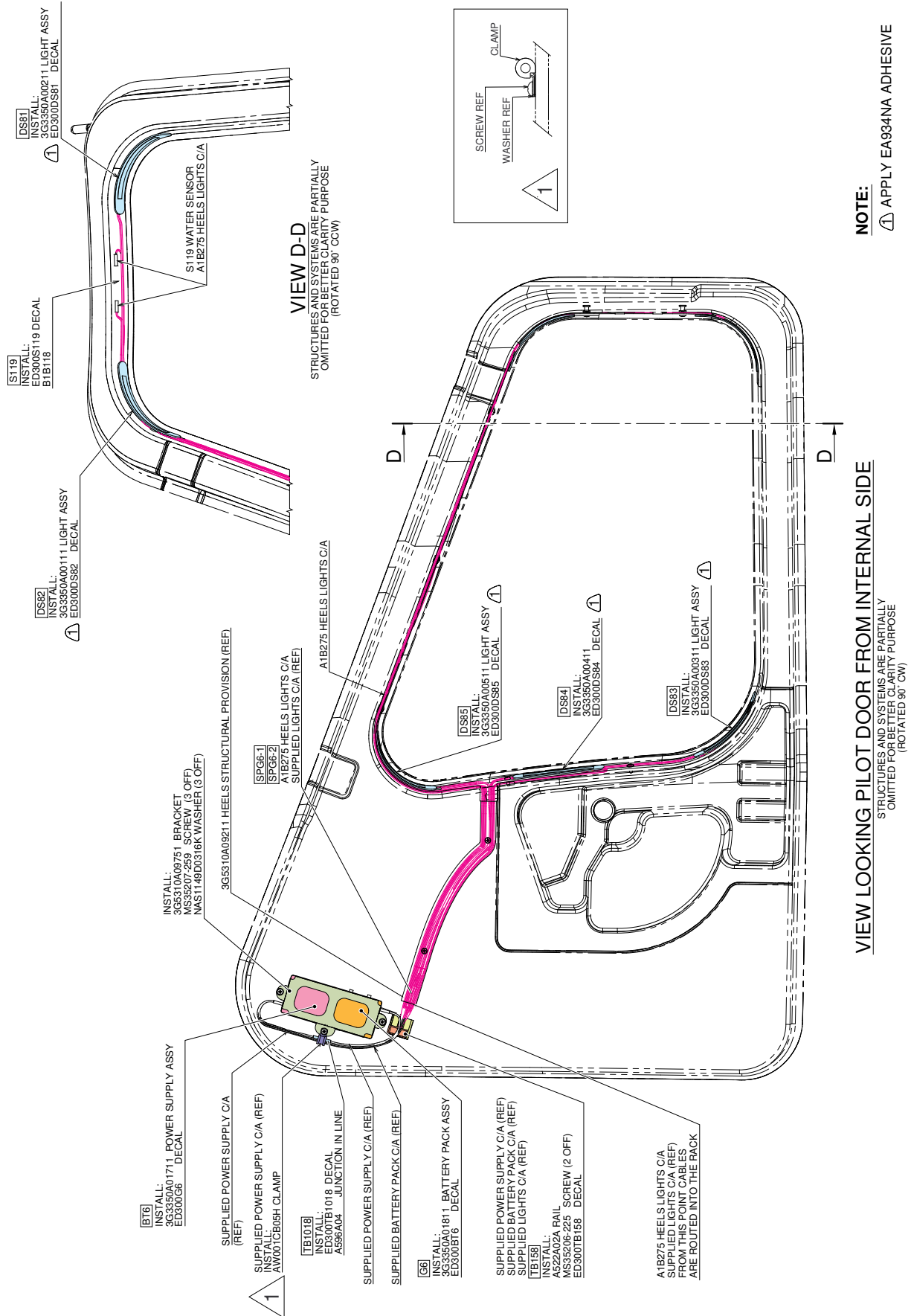
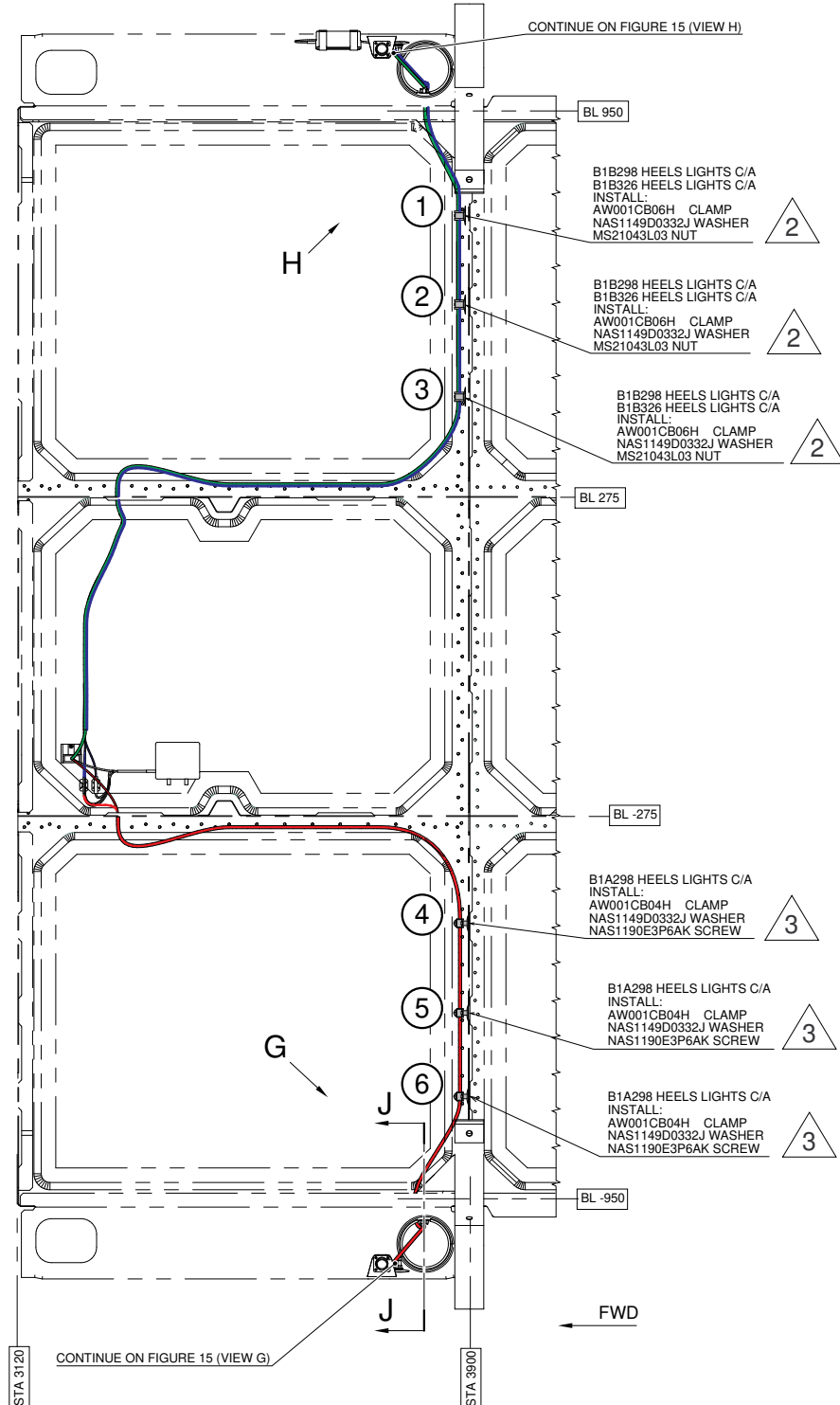
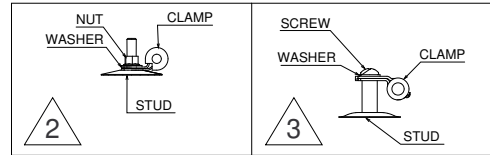


Figure 12

LOCATION NUMBER	PART NUMBER	STA	BL	WL	ORIENTATION
1	A366A3E12C	3899	761.5	982	-
2	A366A3E12C	3899	608	982	-
3	A366A3E12C	3899	448	982	-
4	A388A3E12C	3899	-460	975	-
5	A388A3E12C	3899	-615	975	-
6	A388A3E12C	3899	-760	975	-

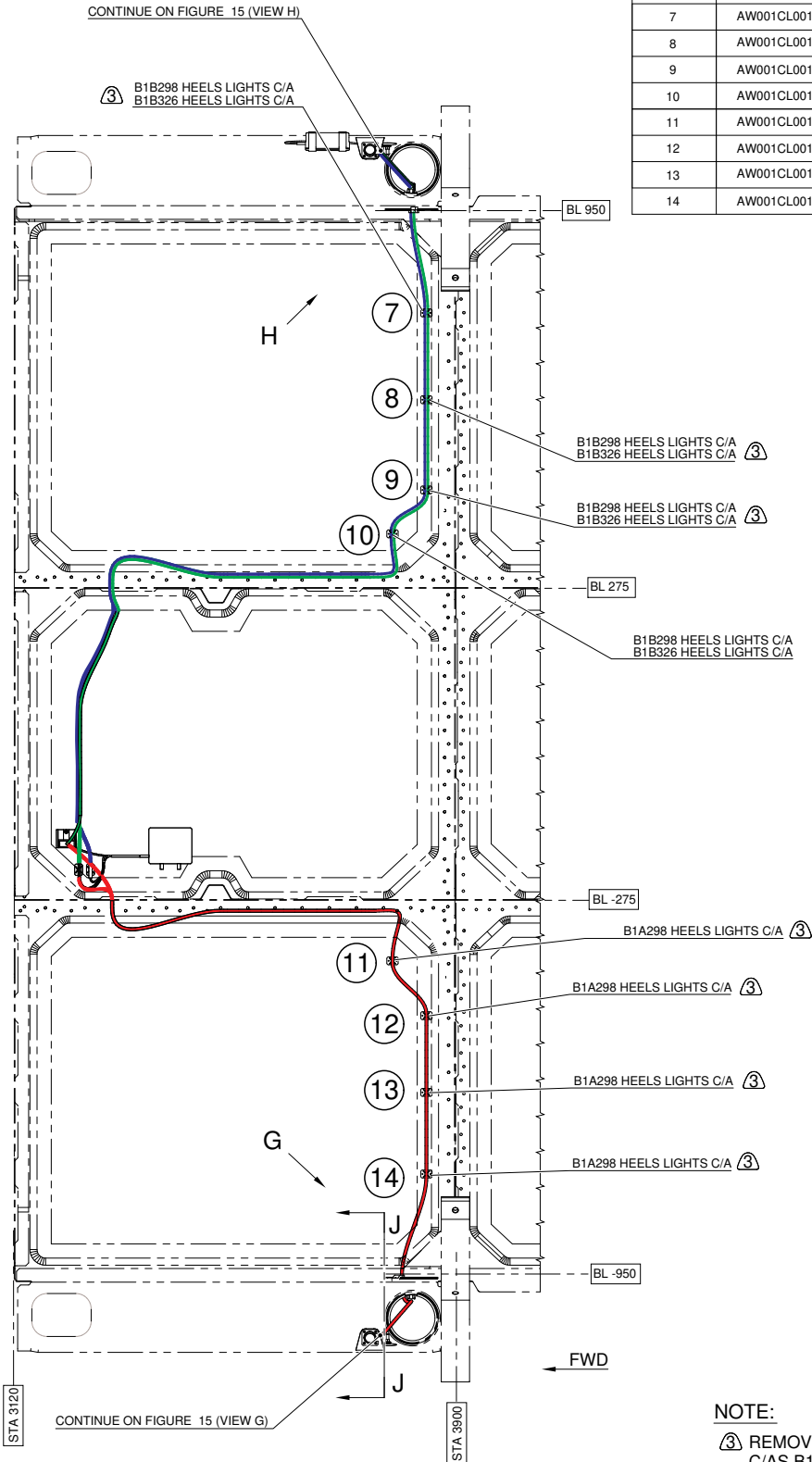


VIEW LOOKING DOWN FLOOR

STRUCTURES AND SYSTEMS ARE PARTIALLY OMITTED FOR BETTER CLARITY PURPOSE
(APPLICABLE ONLY TO HELICOPTER NOT EQUIPPED WITH KIT AVCS)

Figure 13

LOCATION NUMBER	PART. NUMBER	STA	BL	WL	ORIENTATION
7	AW001CL001-N6	3848.7	761	833.5	0°
8	AW001CL001-N6	3848.7	608	833.5	0°
9	AW001CL001-N6	3848.7	448	833.5	0°
10	AW001CL001-N6	3788.7	371	833.5	0°
11	AW001CL001-N6	3788.7	-383	833.5	0°
12	AW001CL001-N6	3848.7	-480	833.5	0°
13	AW001CL001-N6	3848.7	-615	833.5	0°
14	AW001CL001-N6	3848.7	-760	833.5	0°



NOTE:

③ REMOVE AND REINSTALL SUPPORTS C/AS B1B2 AND B2B3 IN THE INDICATED POSITIONS.

VIEW LOOKING DOWN FLOOR
 STRUCTURES AND SYSTEMS ARE PARTIALLY OMITTED FOR BETTER CLARITY PURPOSE
 (APPLICABLE ONLY TO HELICOPTER EQUIPPED WITH KIT AVCS)

Figure 14

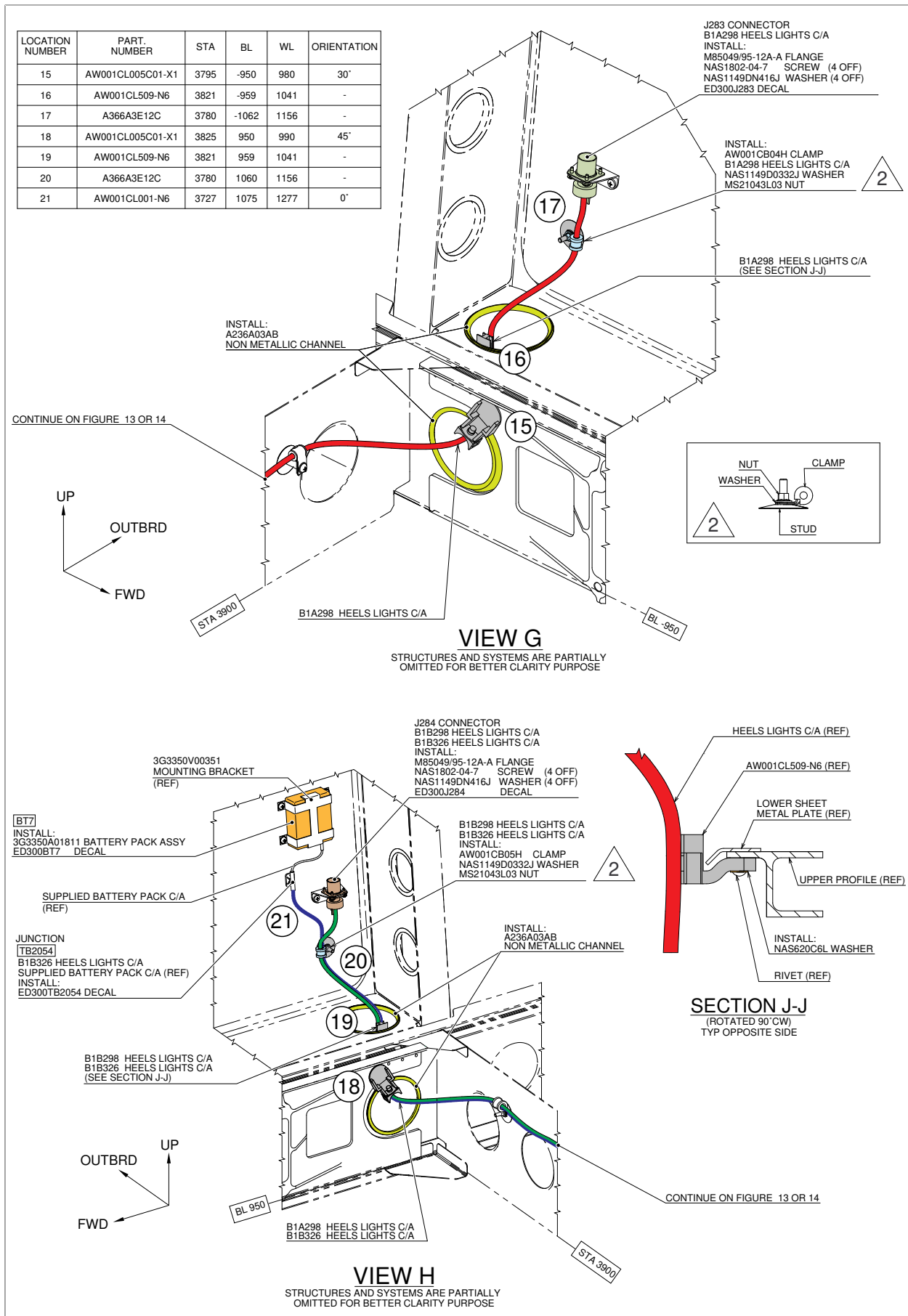


Figure 15

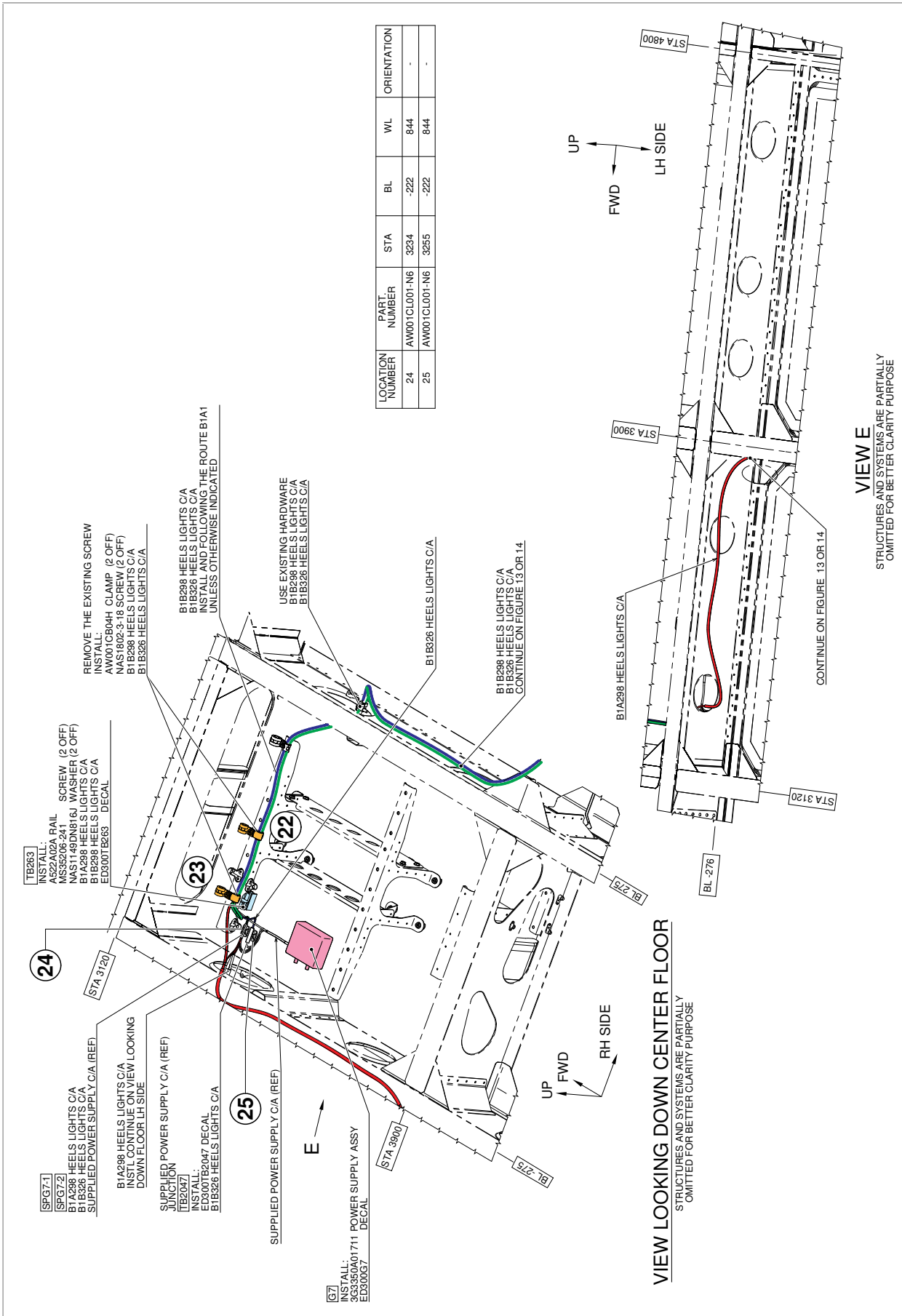
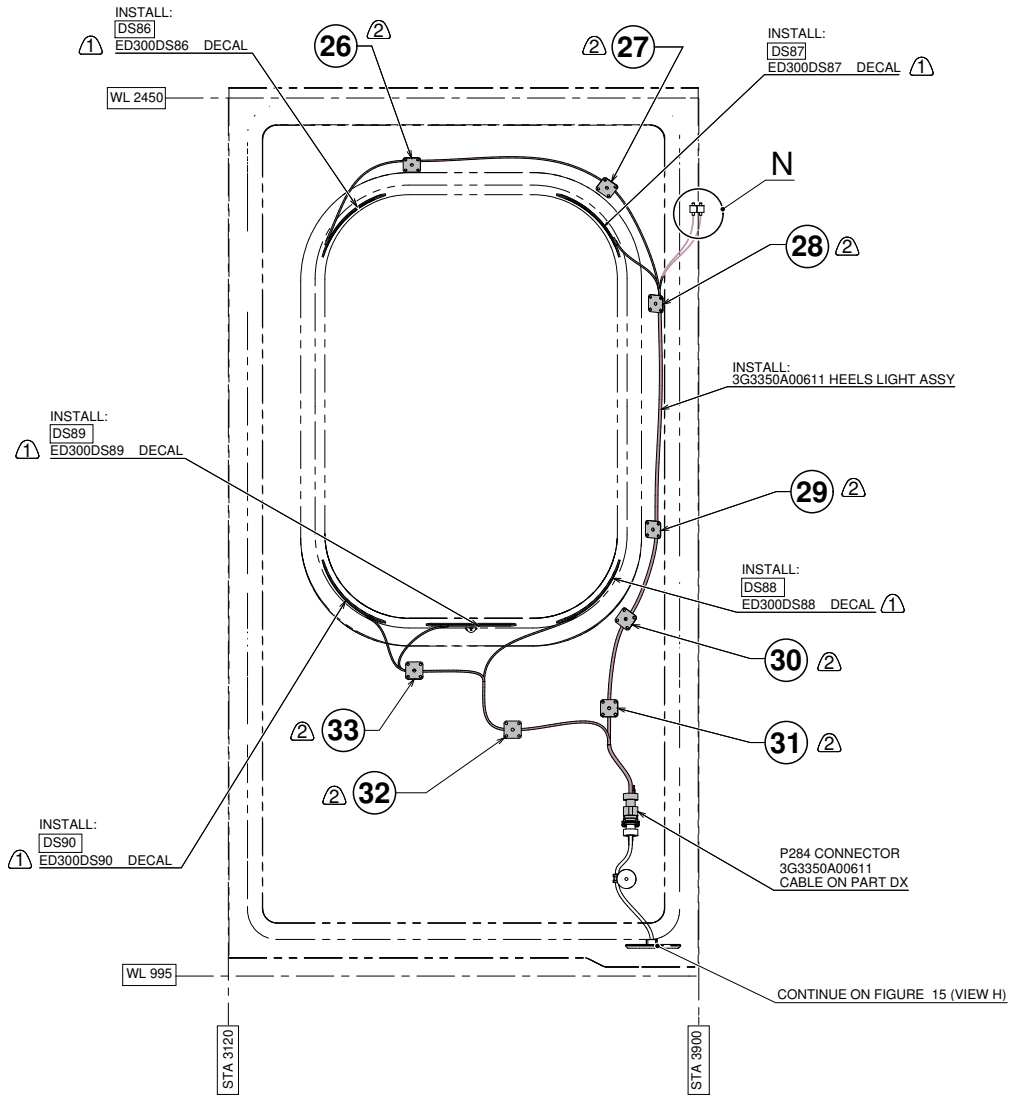
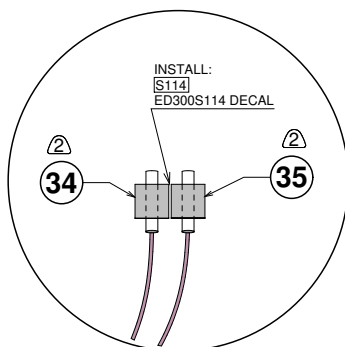


Figure 16



VIEW LOOKING RH PAX WINDOWS FROM INTERNAL SIDE

STRUCTURES AND SYSTEMS ARE PARTIALLY OMITTED FOR BETTER CLARITY PURPOSE



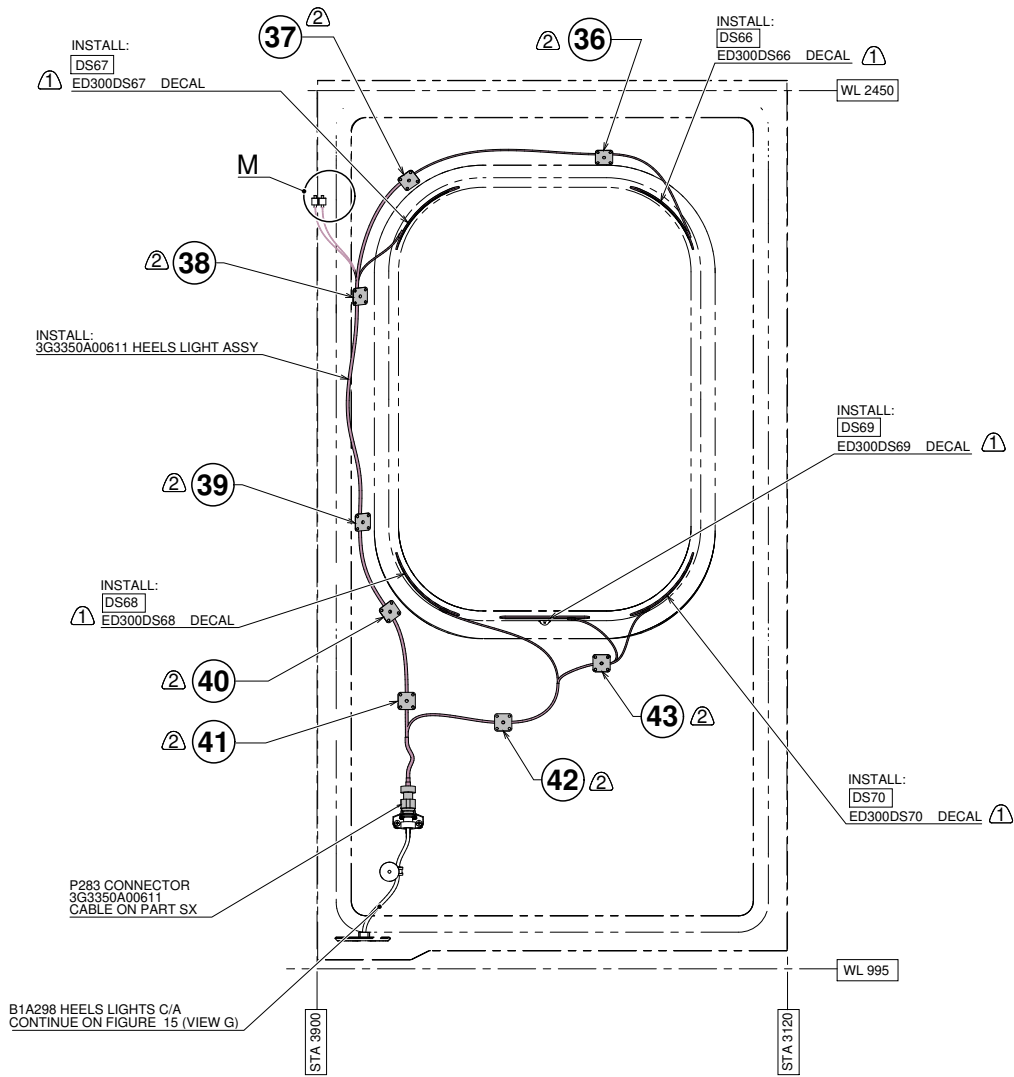
DETAIL N

LOCATION NUMBER	PART. NUMBER	STA	BL	WL	ORIENTATION
26	AW001CL000A-X3	3424	930	2339	0°
27	AW001CL000A-X3	3748	941	2301	45°
28	AW001CL000A-X3	3828	939	2109	0°
29	AW001CL000A-X3	3824	1017	1735	0°
30	AW001CL000A-X3	3779	1051	1587	45°
31	AW001CL000A-X3	3751	1020	1439	0°
32	AW001CL000A-X3	3591	1019	1403	0°
33	AW001CL000A-X3	3428	1023	1501	45°
34	AW001CL009-CM	3891	907	2266	0°
35	AW001CL009-CM	3903	907	2266	0°

NOTE:

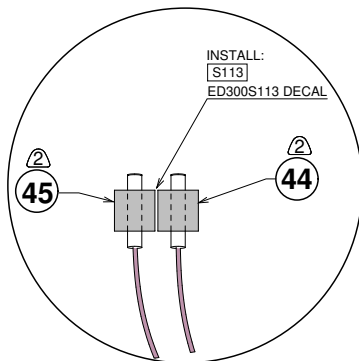
- ① APPLY EA934NA ADHESIVE
- ② FIX PLASTIC SUPPORT ON INTERNAL LINERS

Figure 17



VIEW LOOKING LH PAX WINDOWS FROM INTERNAL SIDE

STRUCTURES AND SYSTEMS ARE PARTIALLY OMITTED FOR BETTER CLARITY PURPOSE



DETAIL M

LOCATION NUMBER	PART. NUMBER	STA	BL	WL	ORIENTATION
36	AW001CL000A-X3	3424	-930	2339	0°
37	AW001CL000A-X3	3748	-941	2301	45°
38	AW001CL000A-X3	3828	-939	2109	0°
39	AW001CL000A-X3	3824	-1017	1735	0°
40	AW001CL000A-X3	3779	-1051	1587	45°
41	AW001CL000A-X3	3751	-1020	1439	0°
42	AW001CL000A-X3	3591	-1019	1403	0°
43	AW001CL000A-X3	3428	-1023	1501	45°
44	AW001CL009-CM	3891	-907	2266	0°
45	AW001CL009-CM	3903	-907	2266	0°

NOTE:

- ① APPLY EA934NA ADHESIVE
- ② FIX PLASTIC SUPPORT ON INTERNAL LINERS

Figure 18

3G2580A46131
WINDW LINER BONDED
ASSY LH UPPER
(REWORKED FROM 3G2580A20432)

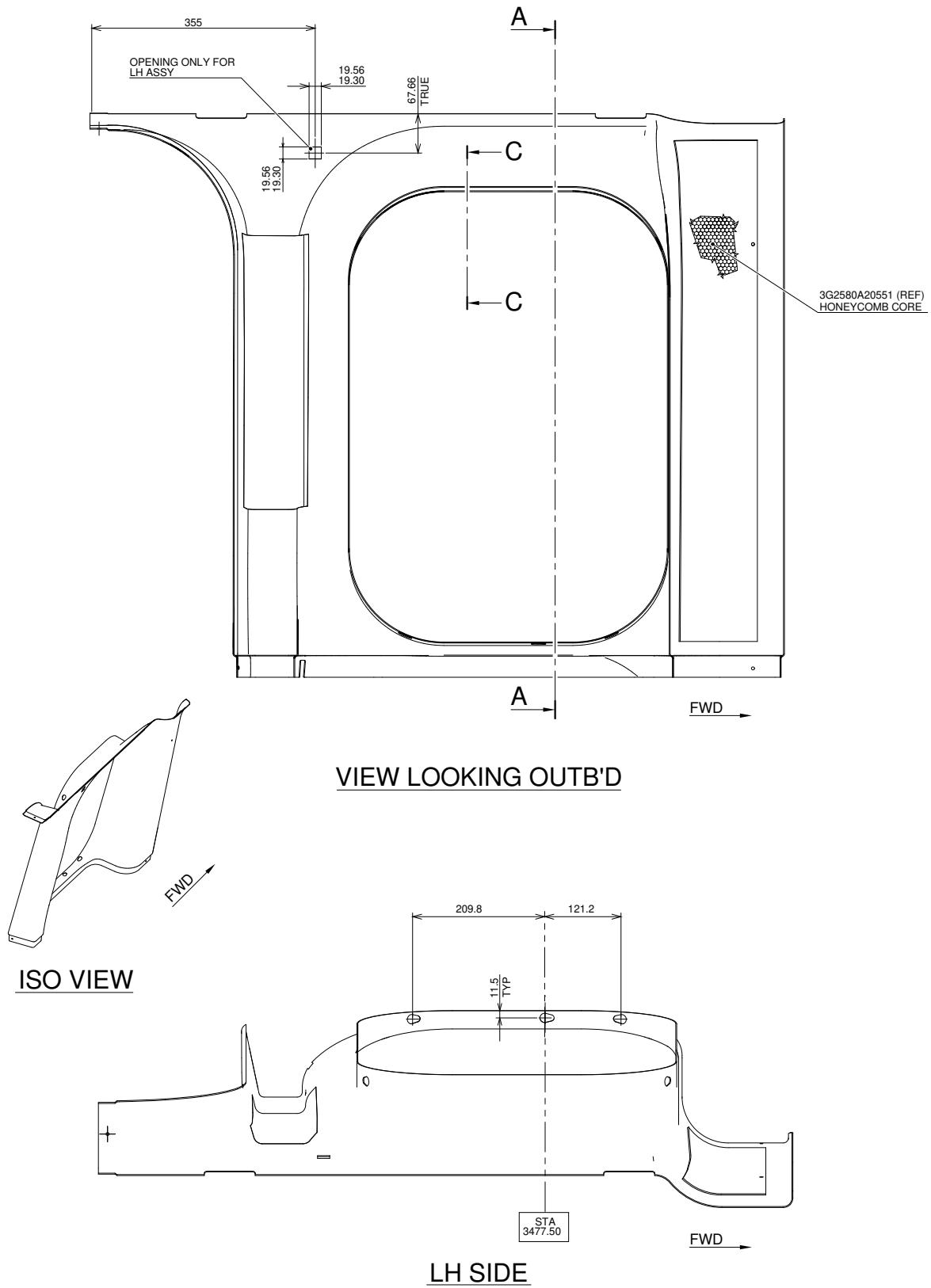


Figure 19

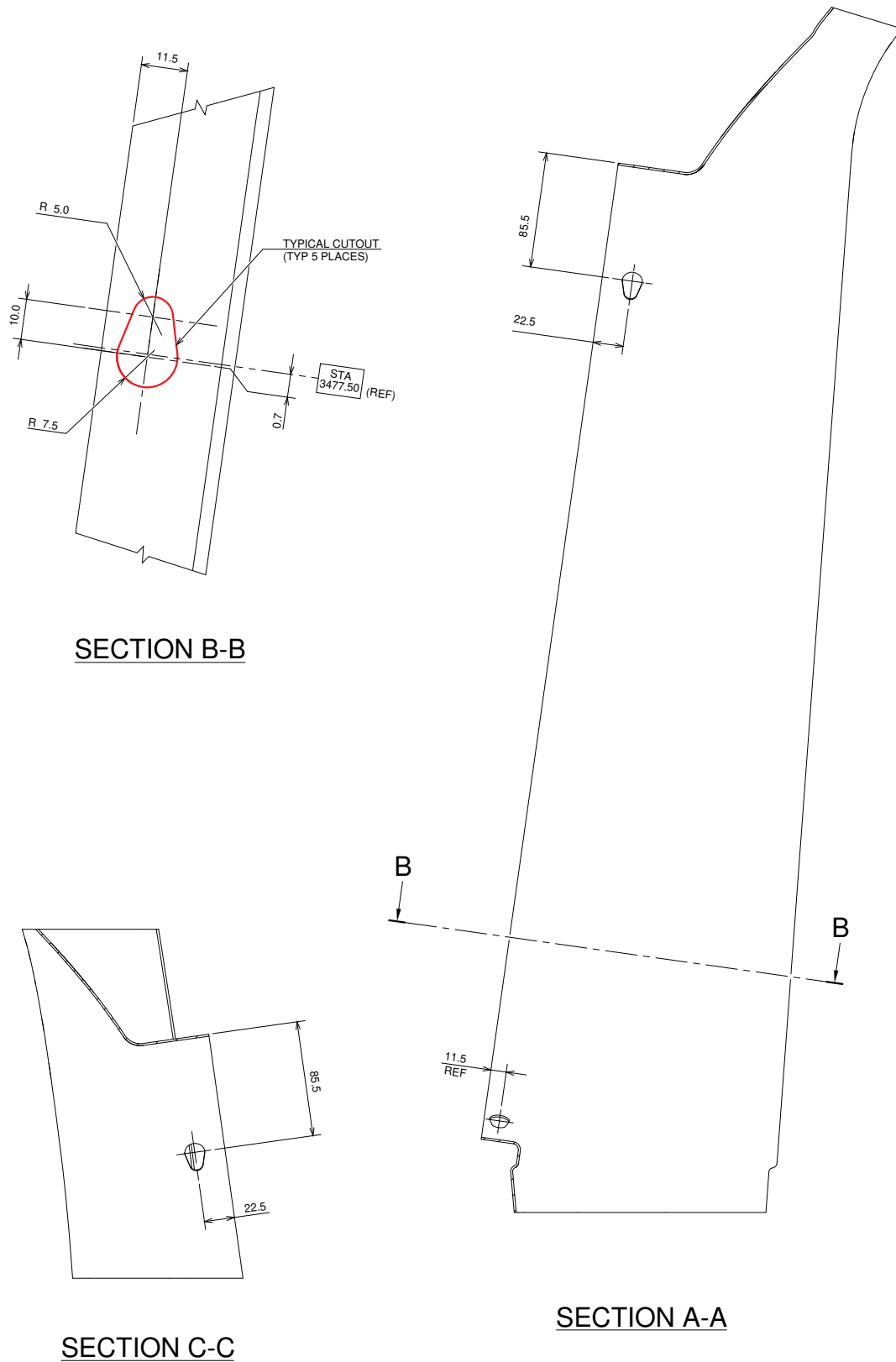


Figure 20

S.B. N°139-518
DATE: June 22, 2021
REVISION: /

3G2580A46231
WINDOW LINER BONDED
ASSY LH UPPER
(REWORKED FROM 3G2580A20632)

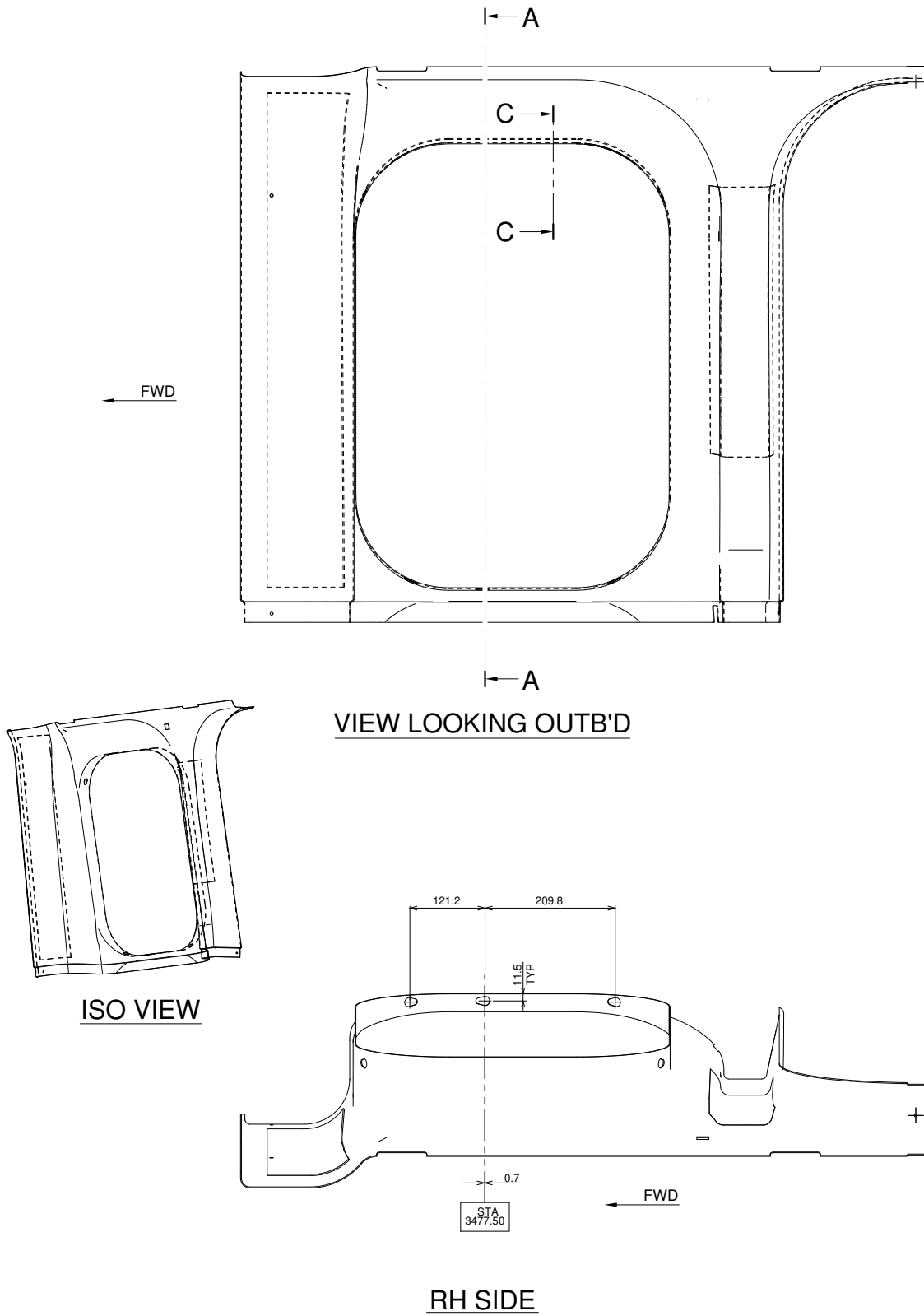


Figure 21

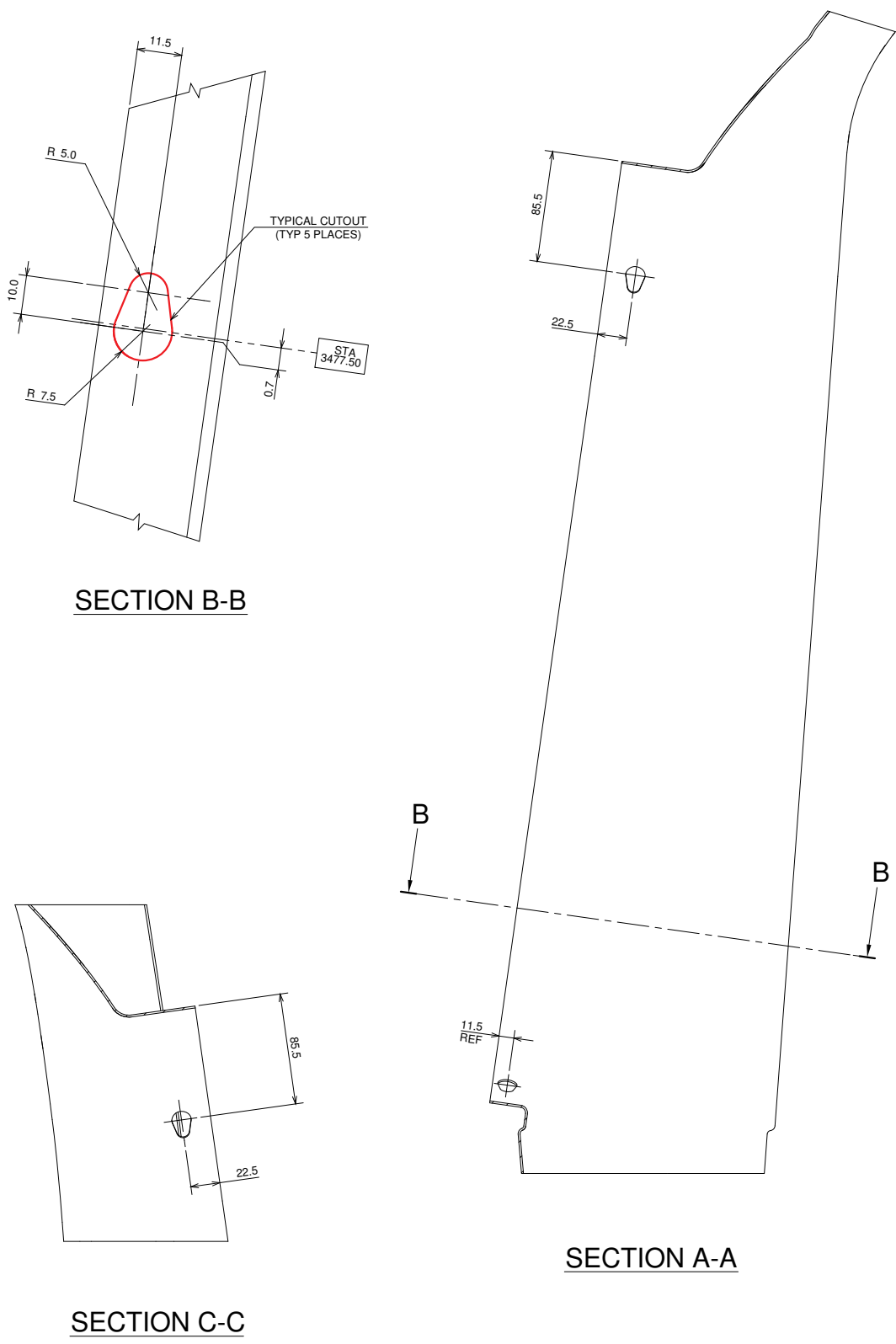
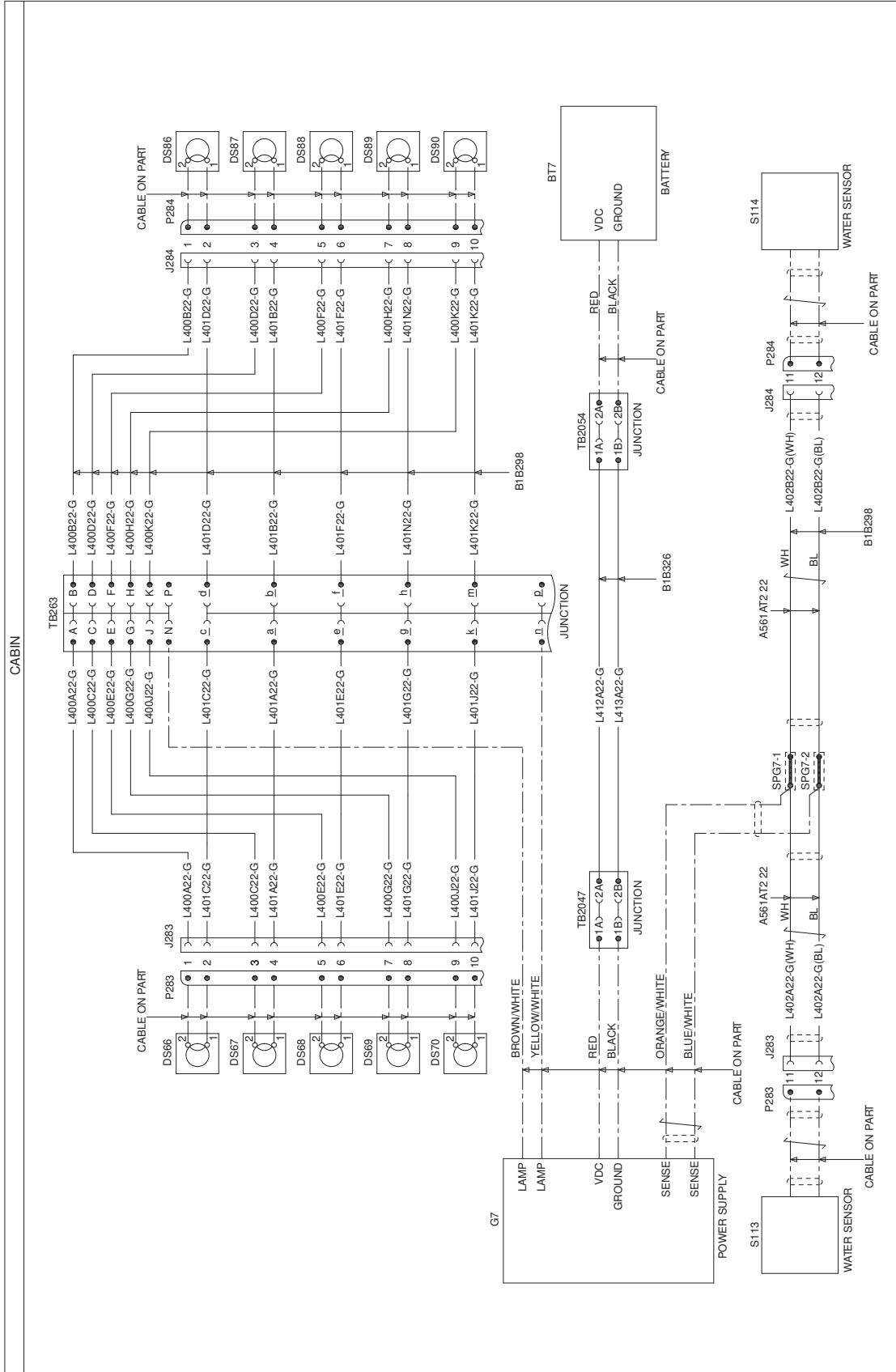


Figure 22

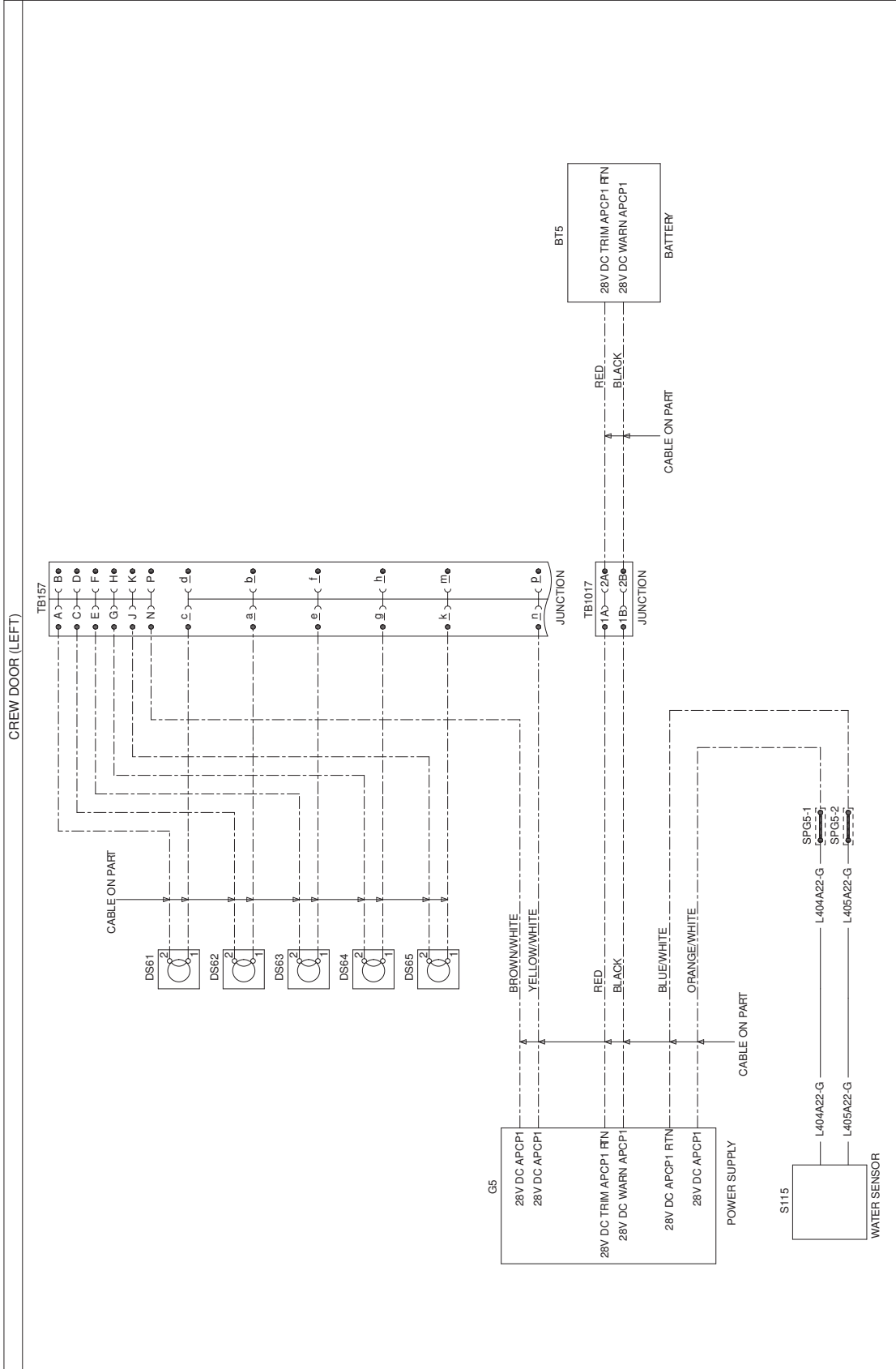
S.B. N°139-518
DATE: June 22, 2021
REVISION: /



3G3350W00211
WIRING DIAGRAM HEEL LIGHTS
SHEET 1

FUNCTIONAL NOTES
ALL CABLES ARE IN LOOM B1A298 UNLESS SPECIFIED
ALL CABLES ARE OF TYPE A556M 22 UNLESS SPECIFIED

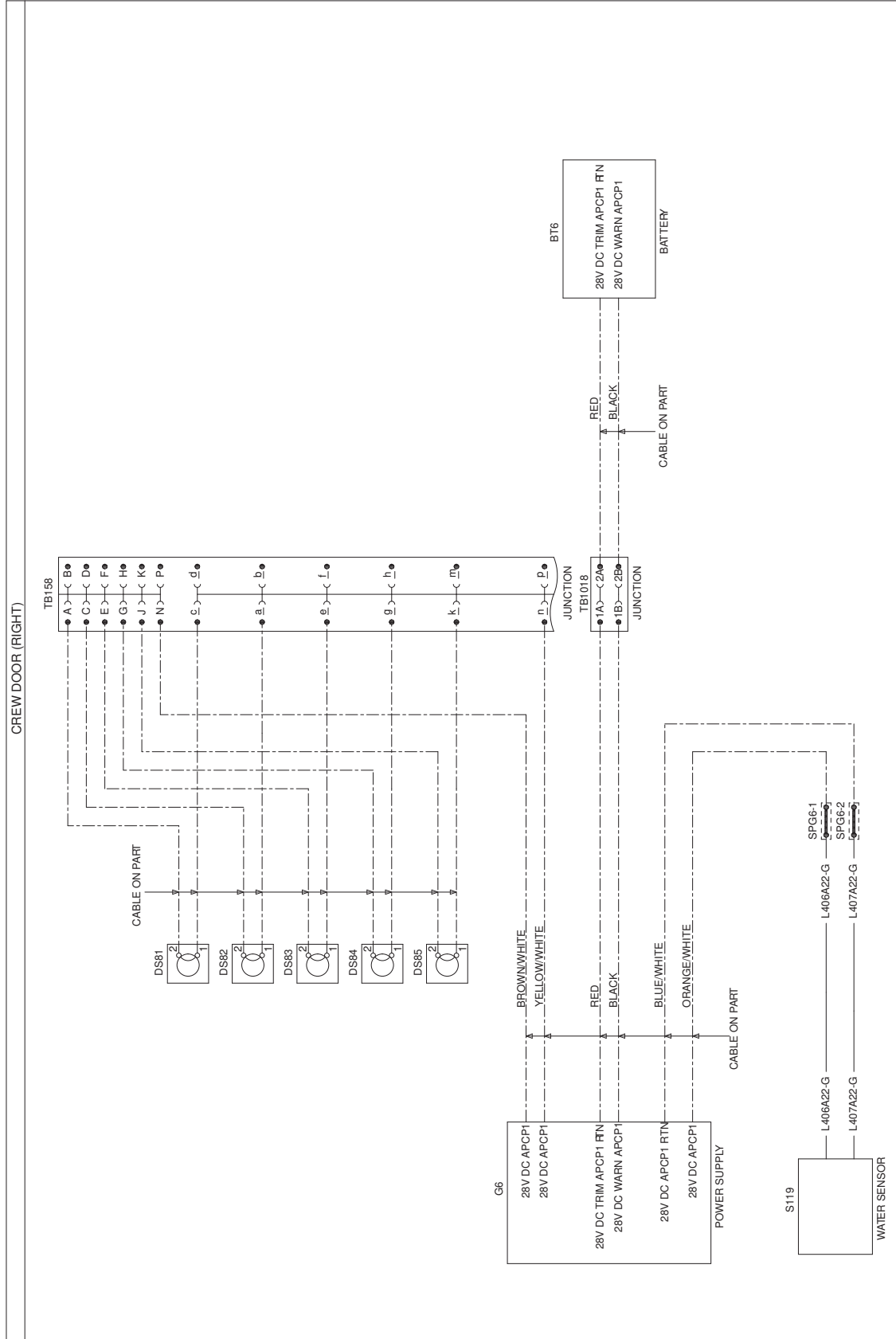
Figure 23



3G3350W00211
WIRING DIAGRAM HEEL LIGHTS
SHEET 2

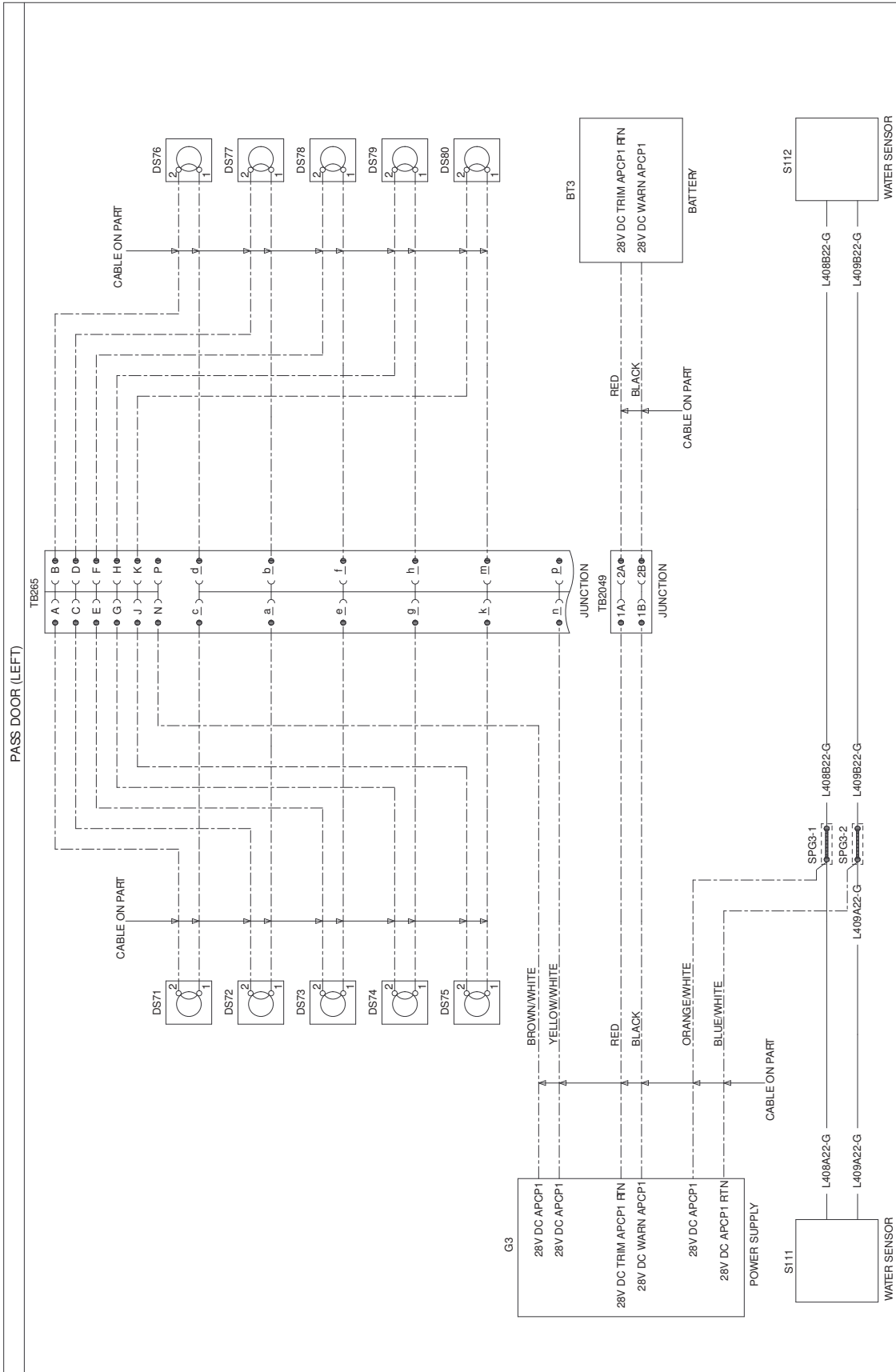
FUNCTIONAL NOTES
ALL CABLES ARE IN LOOM A1A264 UNLESS SPECIFIED
ALL CABLES ARE OF TYPE A556A 22 UNLESS SPECIFIED

Figure 24



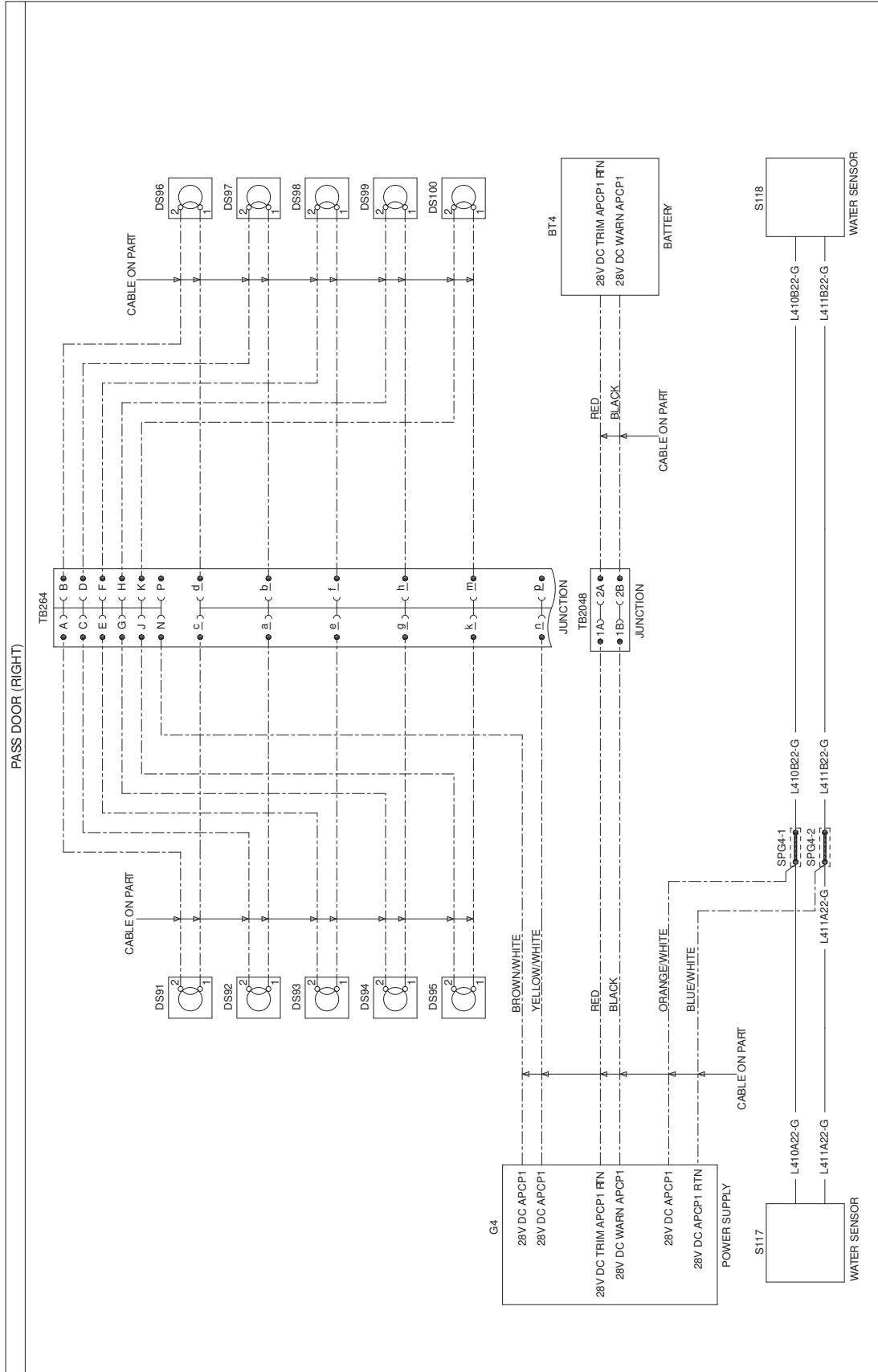
FUNCTIONAL NOTES
ALL CABLES ARE IN LOOM A1B275 UNLESS SPECIFIED
ALL CABLES ARE OF TYPE A556A 22 UNLESS SPECIFIED

Figure 25



FUNCTIONAL NOTES
ALL CABLES ARE IN LOOM B1A300 UNLESS SPECIFIED
ALL CABLES ARE OF TYPE A556A 22 UNLESS SPECIFIED

Figure 26



FUNCTIONAL NOTES
ALL CABLES ARE IN LOOM B1B300 UNLESS SPECIFIED
ALL CABLES ARE OF TYPE A556# 22 UNLESS SPECIFIED

Figure 27

Cable Assy	Wire		From		Electrical Contact	To		Electrical Contact
	ID	Col.	Ref Des	Pin		Ref Des	Pin	
3G9B01A29801 (B1A298)	L400A22-G		TB263	A	A523A-A01	J283	1	M39029/56-348
	L400C22-G		J283	3	M39029/56-348	TB263	C	A523A-A01
	L400E22-G		J283	5	M39029/56-348	TB263	E	A523A-A01
	L400G22-G		J283	7	M39029/56-348	TB263	G	A523A-A01
	L400J22-G		J283	9	M39029/56-348	TB263	J	A523A-A01
	L401A22-G		J283	4	M39029/56-348	TB263	a	A523A-A01
	L401C22-G		J283	2	M39029/56-348	TB263	c	A523A-A01
	L401E22-G		J283	6	M39029/56-348	TB263	e	A523A-A01
	L401G22-G		J283	8	M39029/56-348	TB263	g	A523A-A01
	L401J22-G		J283	10	M39029/56-348	TB263	k	A523A-A01
	L402A22-G	BL	J283	12	M39029/56-348	SPG7-2	*	N.A.
	L402A22-G	WH	J283	11	M39029/56-348	SPG7-1	*	N.A.
3G9B01B29801 (B1B298)	L400B22-G		TB263	B	A523A-A01	J284	1	M39029/56-348
	L400D22-G		TB263	D	A523A-A01	J284	3	M39029/56-348
	L400F22-G		TB263	F	A523A-A01	J284	5	M39029/56-348
	L400H22-G		TB263	H	A523A-A01	J284	7	M39029/56-348
	L400K22-G		TB263	K	A523A-A01	J284	9	M39029/56-348
	L401B22-G		TB263	b	A523A-A01	J284	4	M39029/56-348
	L401D22-G		TB263	d	A523A-A01	J284	2	M39029/56-348
	L401F22-G		TB263	f	A523A-A01	J284	6	M39029/56-348
	L401K22-G		TB263	m	A523A-A01	J284	10	M39029/56-348
	L401N22-G		TB263	h	A523A-A01	J284	8	M39029/56-348
	L402B22-G	WH	SPG7-1	*	N.A.	J284	11	M39029/56-348
	L402B22-G	BL	SPG7-2	*	N.A.	J284	12	M39029/56-348
3G9B01B32601 (B1B326)	L412A22-G		TB2047	2A	A523A-A05	TB2054	1A	A523A-A05
	L413A22-G		TB2047	2B	A523A-A05	TB2054	1B	A523A-A05

Figure 28

