



Rolls-Royce

ADVANCED RELEASE

TO: Holders of RR300 Series Operations and Maintenance Manual, Publication CSP 21009.

Reason: Revised inspection procedure.

Component: Compressor Front Roller Bearing

Remarks: Contact Rolls-Royce

72-30-13-200-801

Jul 31/23



COMPRESSOR FRONT ROLLER BEARING INSPECTION/CHECK

TASK 72-30-13-200-801

1. Do the Inspection of the Front Compressor Roller Bearing

A. General

This task gives you the procedure to do the inspection of the front compressor roller bearing.

B. Materials

None

C. Consumable Materials

None

D. Expendable Parts

None

E. Special Tools and Equipment

None

F. References

(1) TASK 70-22-01-200-801, Do the Inspection of the Bearing, SPM.

G. Procedure

SUBTASK 72-30-13-220-001

(1) Do the inspection of the front compressor roller bearing.

(a) Do the inspection of the front compressor roller bearing (REF. TASK 70-22-01-200-801).

SUBTASK 72-30-13-220-002

REF. FIG. 801/TASK 72-30-13-990-801

(2) Do the dimensional inspection of the front compressor roller bearing (bearing).

CAUTION: USE LINT-FREE GLOVES OR BARRIER CREAM WHEN YOU TOUCH OR MOVE A BEARING. DAMAGE OR CONTAMINATION CAN OCCUR.

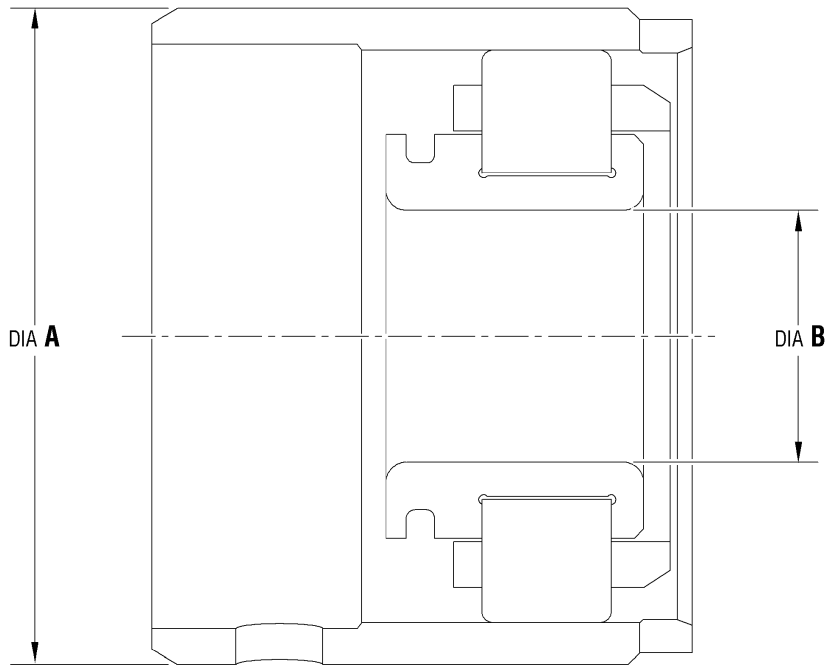
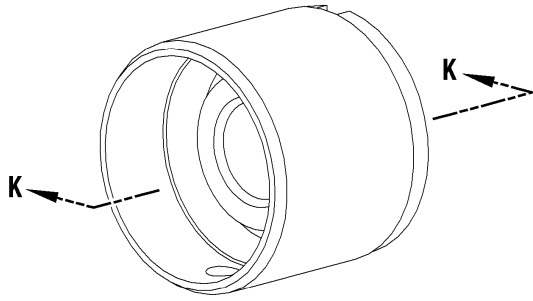
CAUTION: DO NOT PUT BEARINGS OR BEARING COMPONENTS ON TOP OF OTHER BEARINGS OR BEARING COMPONENTS. DAMAGE CAN OCCUR.

CAUTION: DO NOT LET THE BEARING DROP ON A HARD SURFACE. DAMAGE CAN OCCUR.

(a) Do the dimensional inspection of the bearing to the limits that follow:

ITEM	SERVICEABLE LIMITS	REPAIR LIMITS	ACTION NECESSARY
Front compressor roller bearing			
DIA A	Minimum of 1.0234 in. (25.994 mm).	Not repairable.	Replace the bearing.
DIA B	Maximum of 0.3937 in. (10.000 mm).	Not repairable.	Replace the bearing.

EFFECTIVITY: ALL



SECTION K-K

Front Compressor Roller Bearing - Inspection/Check
FIG. 801/TASK 72-30-13-990-801

ii00022908

EFFECTIVITY: ALL

INSPECTION/CHECK- 801

72-30-13

Page 802

Jul 31/23