

PRATT & WHITNEY CANADA  
**SERVICE BULLETIN**

P&WC S.B. No. 41061

**BULLETIN INDEX LOCATOR**  
**73-20-00**

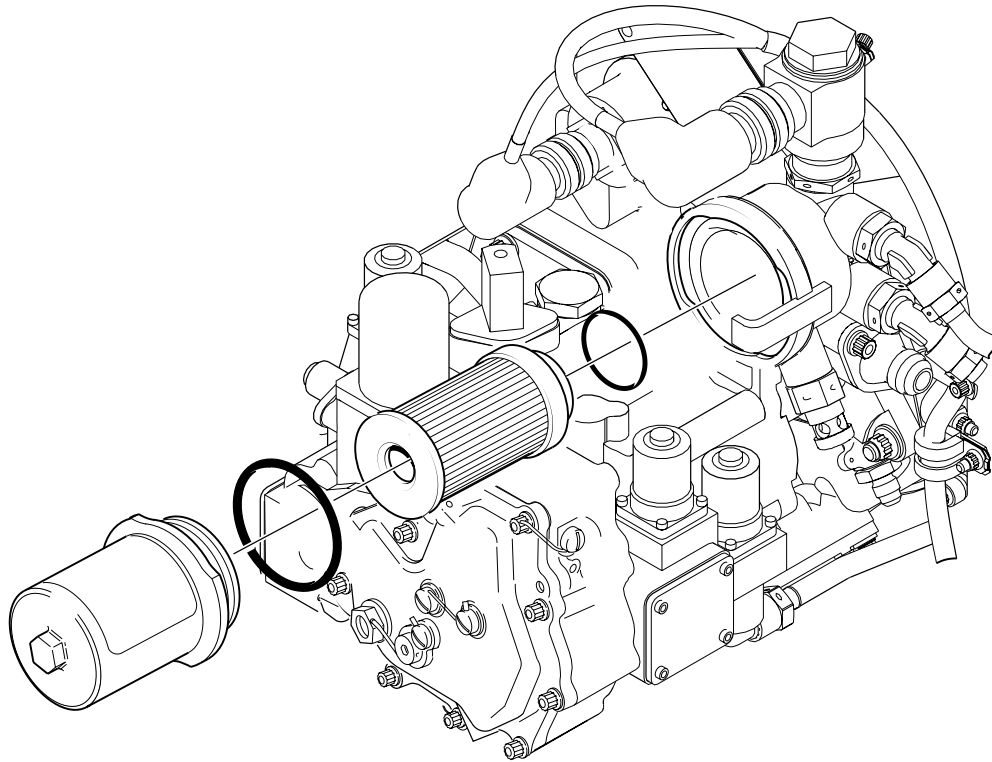
TURBOSHAFT ENGINE  
FUEL FILTER - INSPECTION OF

MODEL APPLICATION

PT6C-67C

Compliance: CATEGORY 6

Summary: A customer found a fuel filter with an incorrect part number on a P&WC engine. Some filters incorporated in Woodward Fuel Management Modules may have been incorrectly identified. A one time inspection is required to replace all fuel filters which have been incorrectly identified.



Jun 10/2011

**PT6C-72-41061**  
Cover Sheet

24-Hour Global Service

**CFIRST CENTRE**

Toll free where available (SIL GEN-027)

USA & CANADA..... 1-800-268-8000

International ..... (IAC\*)+8000-268-8000

\* International Access Code

Other..... 1-450-647-8000

Fax..... 1-450-647-2888

Web Site..... [www.pwc.ca](http://www.pwc.ca)

WARNING - PROPRIETARY RIGHTS & EXPORT CONTROLS NOTICE

This bulletin contains proprietary information of Pratt & Whitney Canada Corp. ("P&WC"), which P&WC provides in confidence and solely for the purposes of supporting engine certification and providing applicable information regarding the proper use, maintenance, inspection, repair, servicing and parts application of P&WC products and services, as directed therein. Neither this bulletin nor any information in it may be disclosed to others, or used for any other purpose, including, without limitation, to design, create, develop, reproduce, manufacture or derive any design, part, product, material, process, modification, configuration change or repair, or obtain FAA or other government approval to do so. Possession and use of this bulletin is also subject to the restrictions set out in P&WC's Technical Data Agreement (a copy of which may be obtained by contacting P&WC Technical Publications). The contents of this bulletin may be subject to export control laws. Unauthorized export or re-export of the bulletin, or parts thereof, is prohibited. By accepting and possessing this bulletin, you agree to be bound by the foregoing terms.

If a Government agency or department intends to disclose any information, written notice should be given to:

VP - Legal Services, Pratt & Whitney Canada Corp., 1000 Marie-Victorin (01BE5), Longueuil, Quebec J4G 1A1.

PRATT & WHITNEY CANADA  
**SERVICE BULLETIN**

P&WC S.B. No. 41061

TURBOSHAFT ENGINE  
FUEL FILTER - INSPECTION OF

1. Planning Information

A. Effectivity

PT6C-67C Engines which are before and include Serial No. PCE-KB0966.

NOTE: The above effectivity list does not identify engines that have been converted from one engine model to another via an engine conversion service bulletin. To clarify the effectivity of converted engines, refer to the original engine effectivity above. For the parts embodied during the engine conversion, refer to conversion service bulletin.

B. Concurrent Requirements

None.

C. Reason

(1) Problem

A customer found a fuel filter with an incorrect part number on a P&WC engine.

(2) Cause

Some fuel filters, incorporated in Woodward Fuel Management Modules, may have been incorrectly identified.

(3) Solution

A one time inspection is required to replace all fuel filters which may have been incorrectly identified.

D. Description

Do a one time inspection to replace all fuel filters which may have been incorrectly identified.

E. Compliance

CATEGORY 6 - P&WC recommends to do this service bulletin at the next scheduled maintenance check or when the subassembly (i.e. module, accessories, components, or build groups) is disassembled and access is available to the necessary part; whichever occurs first. Do all spare subassemblies.

F. Approval

D.A.A. approved

PRATT & WHITNEY CANADA  
**SERVICE BULLETIN**

P&WC S.B. No. 41061

TURBOSHAFT ENGINE  
FUEL FILTER - INSPECTION OF

1. Planning Information (Cont'd)

G. Manpower

Once you have access to the part, an estimate of 0.5 man-hours is required to include this service bulletin at maintenance.

H. Weight and Balance

None.

I. Electrical Load Data

Not changed.

J. Software Accomplishment Summary

Not applicable.

K. References

Illustrated Parts Catalog P/N 3045334 (PT6C-67C)  
Maintenance Manual P/N 3045332 (PT6C-67C)

L. Publications Affected

None.

M. Interchangeability and Intermixability of Parts

Interchangeability - Refer to Para. 2.C.

Intermixability - Not changed.

2. Material Information

A. Industry Support Information

Not applicable.

B. Material - Cost and Availability

You can get the procurable parts listed in Para. 2.C. from any Pratt & Whitney Canada Parts Distribution Center.

The estimated total cost of new parts needed to replace old parts is \$Quote (US, 2011).

The new parts are available.

PRATT & WHITNEY CANADA  
**SERVICE BULLETIN**

P&WC S.B. No. 41061

TURBOSHAFT ENGINE  
FUEL FILTER - INSPECTION OF

2. Material Information (Cont'd)

C. Material Necessary for Each Engine

Not applicable.

D. Reidentified Parts

None.

E. Tooling - Price and Availability

Not applicable.

3. Accomplishment Instructions

A. Inspect the fuel filter for the correct part number as follows (Ref. IPC 73-20-00):

- (1) If you are inspecting the filter at the next scheduled maintenance check (Ref. MM 05-20-00), make sure the correct part number is shown on the new filter element.
- (2) If you are inspecting the filter at next access, inspect the filter element for the correct part number and do as follows:
  - (a) If the part number is correct, you can replace the filter at the next scheduled maintenance check.
  - (b) If the part number is incorrect, replace the filter with one that is correctly identified.
- (3) Make sure all spares have the correct part number on the filter element.

B. Write accomplishment of P&WC S.B. No. 41061 in the applicable engine module log book.

4. Appendix

Not applicable.