

**TITLE**

FUSELAGE - INSPECT THE LEFT AND RIGHT EMERGENCY EXIT REINFORCEMENTS FOR REMOVED MATERIAL AND RETREAT IF ROUGH OR WITHOUT FINISH

**EFFECTIVITY**

MODEL	SERIAL NUMBERS
Super King Air Model 200GT	BY-301 thru BY-331
Super King Air Model B300	FL-1106 thru FL-1156
Super King Air Model B300C	FM-73 thru FM-76

**REASON**

To inspect the left and right reinforcement for removed material and retreat if rough or without finish.

**DESCRIPTION**

This service letter provides instructions to inspect the left and right reinforcement for removed material and retreat if rough or without finish.

**COMPLIANCE**

RECOMMENDED. This service document should be accomplished at the next 2500 cycle Special Inspection, Flight Compartment Cabin Interior Removed.

A service document published by Textron Aviation may be recorded as *completed* in an aircraft log only when the following requirements are satisfied:

- 1) The mechanic must complete all of the instructions in the service document, including the intent therein.
- 2) The mechanic must correctly use and install all applicable parts supplied with the service document kit. Only with written authorization from Textron Aviation can substitute parts or rebuilt parts be used to replace new parts.
- 3) The mechanic or airplane owner must use the technical data in the service document only as approved and published.
- 4) The mechanic or airplane owner must apply the information in the service document only to aircraft serial numbers identified in the *Effectivity* section of the document.
- 5) The mechanic or airplane owner must use maintenance practices that are identified as acceptable standard practices in the aviation industry and governmental regulations.

No individual or corporate organization other than Textron Aviation is authorized to make or apply any changes to a Textron Aviation-issued service document or flight manual supplement without prior written consent from Textron Aviation.

Textron Aviation is not responsible for the quality of maintenance performed to comply with this document, unless the maintenance is accomplished at a Textron Aviation-owned Service Center.

**CONSUMABLE MATERIAL**

You must use the consumable materials that follow, or their equivalent, to complete this service document.

June 30, 2020

MTL-53-01  
Page 1 of 8

Textron Aviation Customer Service, P.O. Box 7706, Wichita, KS 67277, U.S.A. 1-316-517-5800

This document contains technical data and is subject to U.S. export regulations. This information has been exported from the United States in accordance with export administration regulations. Diversion contrary to U.S. law is prohibited. ECCN: 9E991

NAME	NUMBER	MANUFACTURER	USE
Color Chemical Film Treatment	Alodine 1201	Textron Aviation Parts & Distribution 7121 Southwest Boulevard Wichita, KS 67215	To prepare aluminum surface for intermediate primer.
Epoxy Primer	MIL-PRF-23377	Textron Aviation Parts & Distribution 7121 Southwest Boulevard Wichita, KS 67215	Final finish for aluminum.

**TOOLING**

No specialized tooling is required to complete this service document.

**WEIGHT AND BALANCE INFORMATION**

Negligible

**REFERENCES**

Beechcraft 200 Series Maintenance Manual  
 Beechcraft Super King Air B200GT/B200CGT Fusion Maintenance Manual  
 Beechcraft Model B300/B300C Fusion Maintenance Manual  
 Beechcraft Super King Air B300/B300C Maintenance Manual  
 King Air Series Structural Inspection and Repair Manual  
 Beechcraft King Air Model 200/200T/200CT Illustrated Parts Catalog  
 Beechcraft King Air Model B200GT/B200CGT Illustrated Parts Catalog  
 Beechcraft B300/B300C Illustrated Parts Catalog

**REFERENCES****PUBLICATIONS AFFECTED**

None

**ACCOMPLISHMENT INSTRUCTIONS**

1. Prepare the airplane for maintenance.
  - A. Make sure that the airplane is electrically grounded.
  - B. Make sure that all switches are in the OFF/NORM position.
  - C. Disconnect electrical power from the airplane.
    - (1) Disconnect external electrical power.
    - (2) Disconnect the airplane battery.
  - D. Attach maintenance warning tags to the battery and external power receptacle that have "**DO NOT CONNECT ELECTRICAL POWER - MAINTENANCE IN PROGRESS**" written on them.
2. Remove the left and right passenger compartment seats as necessary at FS 188.00 for the B200 and FS 202.4 for the B300. (Refer to the applicable Maintenance Manual, Chapter 25, Passenger Seats - Removal/Installation and Chapter 6, Airplane Stations - Description and Operation.)
3. Remove the left and right cabin tables. (Refer to the applicable Maintenance Manual, Chapter 25, Cabin Table - Removal/Installation.)
4. Remove the pyramid cabinets. (Refer to the Applicable Illustrated Parts Catalog, Chapter 25, Pyramid Cabinet.)

5. Remove the left and right forward cabin partitions. (Refer to the applicable Maintenance Manual, Chapter 25, Furnishings.)
6. Remove the left and right lower side wall. (Refer to the applicable Maintenance Manual, Chapter 25, Cabin Lower Sidewall Panel - Removal Installation.)

**NOTE:** Some airplanes may be equipped with have couches that will have to be removed.

7. Remove the left and right service panel assembly. (Refer to the applicable Maintenance Manual, Chapter 25, Service Panel Assembly - Removal/Installation.)
8. (Refer to Figure 1, View A-A, Figure 1, Sheet 2 and Figure 1, Sheet 3.) Inspect the 101-420016-11 Left Reinforcement and 101-420016-12 Right Reinforcement at FS 188.00 for the B200 and FS202.4 for the B300.

A. If the area is smooth and has finish applied, go to step 9.

B. If area is rough or without finish do the steps that follow.

- (1) Blend any damage to a smooth finish.
- (2) Clean the affected area with Methyl n-Propyl Ketone.
- (3) Apply Alodine 1201 Color Chemical Film Treatment to the affected area. (Refer to the King Air Series Structural Inspection and Repair Manual, Chapter 20, Protective Treatment of Materials.)
- (4) Apply K000574 Corrosion Resistant Primer to the area. (Refer to the King Air Series Structural Inspection and Repair Manual, Chapter 20, Protective Treatment of Materials.)

9. Install the left and right service panel assembly. (Refer to the applicable Maintenance Manual, Chapter 25, Service Panel Assembly - Removal/Installation.)
10. install the left and right lower side wall. (Refer to the applicable Maintenance Manual, Chapter 25, Cabin Lower Sidewall Panel - Removal Installation.)

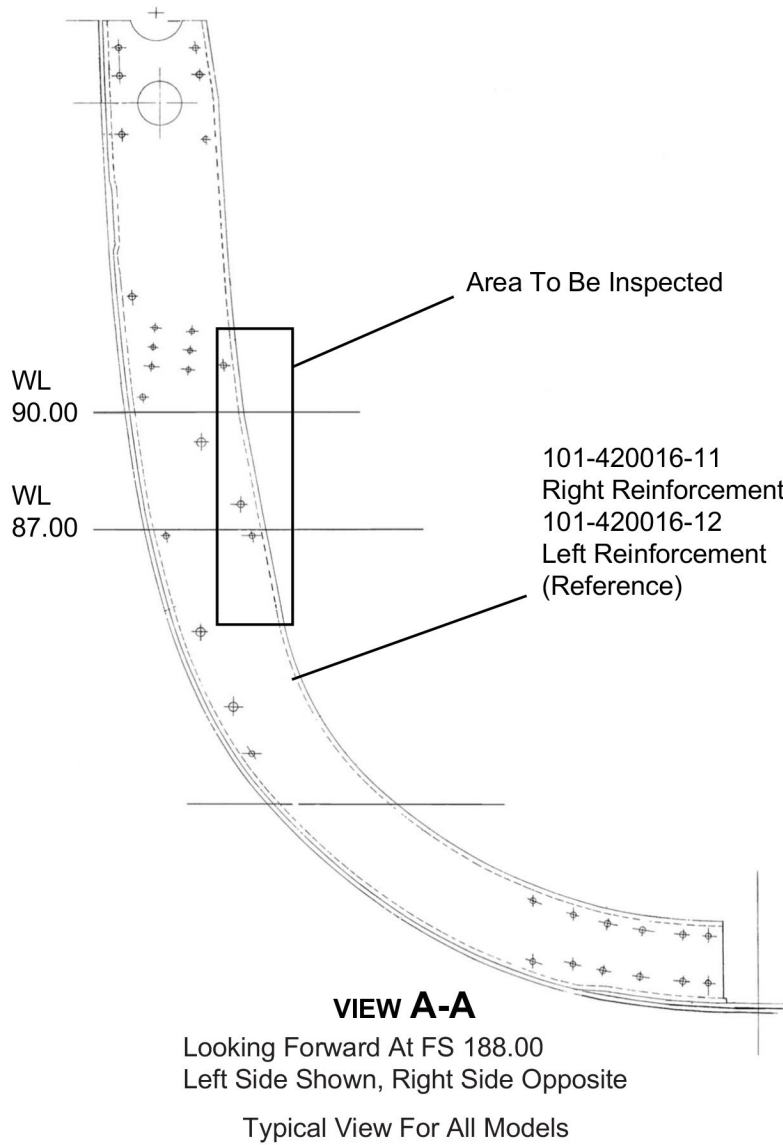
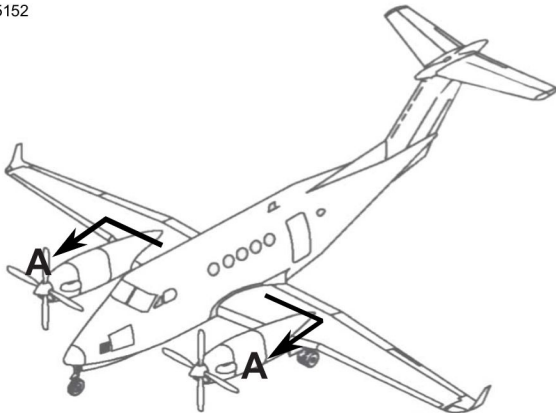
**NOTE:** Some airplanes may be equipped with have couches that will have to be installed.

11. Install the pyramid cabinets. (Refer to the Applicable Illustrated Parts Catalog, Chapter 25, Pyramid Cabinet.)
12. Install the left and right forward cabin partitions. (Refer to the applicable Maintenance Manual, Chapter 25, Furnishings.)
13. Install the left and right cabin tables. (Refer to the applicable Maintenance Manual, Chapter 25, Cabin Table - Removal/Installation.)
14. Install the left and right passenger compartment seats that were removed. (Refer to the applicable Maintenance Manual, Chapter 25, Passenger Seats - Removal/Installation and Chapter 6, Airplane Stations - Description and Operation.)
15. Remove the maintenance warning tags and connect the airplane battery.
16. Make an entry in the airplane logbook that states compliance and method of compliance with this service document.

**NOTE:** Textron Aviation recommends that compliance with all service documents is reported to a maintenance tacking system provider.

- Complete a record of compliance. (Maintenance Transaction Report, Log Book Entry, or other record of compliance.)
- Put a copy of the completed record of compliance in the airplane logbook.
- Send a copy of the completed record of compliance to the maintenance system tracking provider.

E75152



101-420016-4

Figure 1. Inspection Of The Left and Right Reinforcements (Sheet 1)

E75153

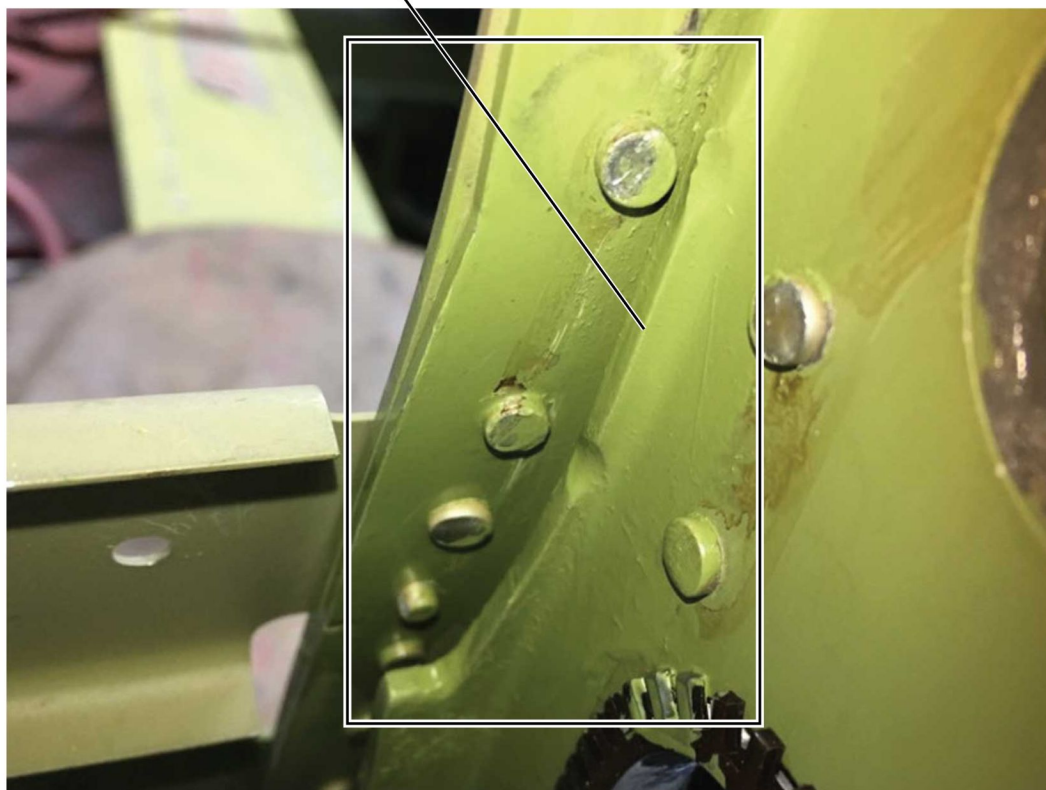


Figure 1. Inspection Of The Left and Right Reinforcements (Sheet 2)

101-420016-4

E75154

Example of area that will need treatment



101-420016-4

Figure 1. Inspection Of The Left and Right Reinforcements (Sheet 3)

E75155

Example of area that will need treatment



Figure 1. Inspection Of The Left and Right Reinforcements (Sheet 4)

101-420016-4

**MATERIAL INFORMATION**

No parts are required to complete this service document.



**TITLE**

FUSELAGE - INSPECT THE LEFT AND RIGHT EMERGENCY EXIT REINFORCEMENTS FOR REMOVED MATERIAL AND RETREAT IF ROUGH OR WITHOUT FINISH

**TO:**

Aircraft Owner

**REASON**

To inspect the left and right reinforcement for removed material and retreat if rough or without finish.

**COMPLIANCE**

RECOMMENDED. This service document should be accomplished at the next 2500 cycle Special Inspection, Flight Compartment Cabin Interior Removed.

**LABOR HOURS**

WORK PHASE	LABOR-HOURS
Inspection	1.0
Modification	4.0

**MATERIAL AVAILABILITY**

No part are required to complete this service document.

**WARRANTY**

This service document is *recommended*. Eligible airplanes may qualify for parts and labor coverage to the extent noted in the *Labor Hours* and *Material Availability* sections of this document.

**Eligibility:** Airplanes identified within the serial number effectivity of this service document must have active Airframe warranty coverage on the original issue date of this document and the coverage must be active on the day the work is accomplished.

**Parts Coverage:** Textron Aviation-owned and Textron Aviation-authorized Service Facilities, operators, or other maintenance facilities may submit a claim for the parts required to accomplish this service document as defined in the *Material Availability* section of this document.

**Labor Coverage:** Textron Aviation-owned and Textron Aviation-authorized Service Facilities rated to perform maintenance on the specific model of Cessna Aircraft may submit a claim for the labor necessary to accomplish this service document as defined in the *Labor Hours* section of this document.

**Credit Application:** After this service document has been accomplished, a claim must be submitted to Textron Aviation within 30 days of the service document completion. Claims for compliance of this service document are to be filed as a W4 type claim.

Please submit your claim form online at [ww2.txtav.com/Parts](http://ww2.txtav.com/Parts) or email the completed Textron Aviation Claim Form to [warranty@txtav.com](mailto:warranty@txtav.com). If submitted on-line a Return Authorization will be provided. If a paper claim is submitted your claim will be entered into the system and a Return Authorization will be sent to you.

The Return Authorization must accompany any required return parts (see *Material Availability*), to the point of purchase.

Parts to be returned to Textron Aviation Parts Distribution should be forwarded to:

Textron Aviation Parts Distribution  
Warranty Administration  
285 South Greenwich Road  
Bldg B89, Docks 1-4  
Wichita, KS 67206  
USA

**Expiration:** June 30, 2021 (after this date the owner/operator assumes the responsibility for compliance costs)

Textron Aviation reserves the right to void continued airplane warranty coverage for the parts affected by this service document until the service document is accomplished.

**NOTE:** As a convenience, service documents are now available online to all our customers through a simple, free-of-charge registration process. If you would like to sign up, please visit the Customer Access link at [www.txtavsupport.com](http://www.txtavsupport.com) to register.