

**TITLE**

NAVIGATION - FIELD UPGRADED PROLINE FUSION PHASE 3 TO PHASE 4 SOFTWARE

**EFFECTIVITY**

<b>MODEL</b>	<b>SERIAL NUMBERS</b>
B200GT	BY-207, BY-239, BY-250 thru BY-323
B200CGT	BZ-1
B300	FL-954, FL-1010, FL-1031 thru FL-1139
B300C	FM-66 thru FM-75

**REASON**

For aircraft that were upgraded to Phase 3 Software in the field and will be upgraded to Phase 4 Software.

**DESCRIPTION**

This service document provides parts and instructions to replace the two input/output concentrators (IOCs), and upgrade field aircraft that had Phase 3 Software installed to Fusion Phase 4 Software.

**NOTE:** The aircraft listed in the effectivity list must have previously complied with the service document SB 34-4171: Proline Fusion Upgrade to Phase 3 Software prior to completing this service document.

**COMPLIANCE**

DISCRETIONARY. This service document can be accomplished at the discretion of the owner.

A service document published by Textron Aviation may be recorded as *completed* in an aircraft log only when the following requirements are satisfied:

- 1) The mechanic must complete all of the instructions in the service document, including the intent therein.
- 2) The mechanic must correctly use and install all applicable parts supplied with the service document kit. Only with written authorization from Textron Aviation can substitute parts or rebuilt parts be used to replace new parts.
- 3) The mechanic or airplane owner must use the technical data in the service document only as approved and published.
- 4) The mechanic or airplane owner must apply the information in the service document only to aircraft serial numbers identified in the *Effectivity* section of the document.
- 5) The mechanic or airplane owner must use maintenance practices that are identified as acceptable standard practices in the aviation industry and governmental regulations.

No individual or corporate organization other than Textron Aviation is authorized to make or apply any changes to a Textron Aviation-issued service document or flight manual supplement without prior written consent from Textron Aviation.

Textron Aviation is not responsible for the quality of maintenance performed to comply with this document, unless the maintenance is accomplished at a Textron Aviation-owned Service Center.

September 16, 2022

MTB-34-05  
Page 1 of 19

Textron Aviation Customer Service, P.O. Box 7706, Wichita, KS 67277, U.S.A. 1-316-517-5800

This document contains technical data and is subject to U.S. export regulations. This information has been exported from the United States in accordance with export administration regulations. Diversion contrary to U.S. law is prohibited. ECCN: 9E991

**APPROVAL**

Textron Aviation received FAA approval for the technical data in this publication that changes the airplane type design.

**FLIGHT CREW OPERATIONS**

No Changes

**CONSUMABLE MATERIAL**

No specialized consumable materials are required to complete this service document.

**TOOLING**

NAME	NUMBER	MANUFACTURER	USE
Beech King Air Maintenance Test Box	TE79-KS-MAINT/935	Textron Aviation Parts Distribution 7121 Southwest Boulevard Wichita, KS 67215	To be used for loading and activating software on the aircraft.
Field Load Shorting Plug	434-340998-0003	Textron Aviation Parts Distribution 7121 Southwest Boulevard Wichita, KS 67215	To be used for loading and activating software on the aircraft.
USB Thumb Drive	N/A	Commercially Available	Used to install the software.
Windows Laptop	N/A	Commercially Available	Used for the preparation of the USB thumb drive.

**WEIGHT AND BALANCE INFORMATION**

Negligible

**REFERENCES**

Beechcraft Super King Air B200GT/B200GT Fusion Maintenance Manual

Beechcraft Super King Air B300/B300C Fusion Maintenance Manual

**PUBLICATIONS AFFECTED**

Beechcraft B200GT/B200CGT Illustrated Parts Catalog

Beechcraft B300/B300C Illustrated Parts Catalog

**ACCOMPLISHMENT INSTRUCTIONS**

1. Record the current airplane options strapping prior to updating software.
  - A. Make sure that the airplane is electrically grounded.
  - B. Connect the external electrical power to the aircraft.
  - C. Connect the 434-340998-0003 Field Shorting Plug or the TE79-KA-MAINT/935 Test Box to the maintenance d-sub connector on the aft end of the center pedestal.
  - D. Put the BATT switch to the ON position.
 

**NOTE:** On B300/B300C Models, put the EXT PWR Switch to the ON Position.
  - E. If the TE79-KA-MAIN/935 Test Box is connected, put the REPORT MODE Switch to the ENABLE Position.
  - F. On the Overhead Instrument Panel, put the DATALOAD Switch to the ENABLE position.
  - G. Make sure that the "Aircraft Configuration Parameter" Page shows on the Pilot's Primary Flight Display (PFD1), PFD2, and on the Multifunction Display (MFD).
 

**NOTE:** On-screen validation is completed with the MFD only.

- H. On the MFD, press the down arrow at the top right corner of the screen and select the "Aircraft Option Straps" page.
- I. (Refer to Figure 2, Sheet 1, 2, and 3.) Record the optional strap configuration of items 1 through 36 as installed on the aircraft.
- NOTE:** Recording the optional strap configuration will make it easier to make sure the Aircraft Personality Module (APM) after the new software has been installed on the aircraft.
- J. Put the DATALOAD Switch to the OFF position.
- K. If the TE79-KA-MAINT/935 Test Box is connected, put the REPORT MODE Switch to the OFF position.
- NOTE:** On B300/B300C Models, put the EXT PWR Switch to the OFF Position.
- L. Make sure that all switches are in the OFF/NORM position.
- M. Disconnect electrical power from the airplane.
- (1) Disconnect external electrical power.
  - (2) Disconnect the airplane battery.
- N. Attach maintenance warning tags to the battery and external power receptacle that have **"DO NOT CONNECT ELECTRICAL POWER - MAINTENANCE IN PROGRESS"** written on them.
2. Install the Proline Fusion 4 hardware as follows:
- A. Remove the two 822-1361-622 IOCs from the aircraft.
- (1) For all King Air 200 Models, refer to the Super King Air B200GT/B200CGT Fusion Maintenance Manual, Chapter 31, Input/Output Concentrator (IOC-3100) - Removal/Installation.
  - (2) For all King Air 300 Models, refer to the Super King Air B300/B300C Fusion Maintenance Manual, Chapter 31, Input/Output Concentrator (IOC-3100) - Removal/Installation.
- B. Install the two 822-1361-623 IOCs into the aircraft.
- (1) For all King Air 200 Models, refer to the Super King Air B200GT/B200CGT Fusion Maintenance Manual, Chapter 31, Input/Output Concentrator (IOC-3100) - Removal/Installation.
  - (2) For all King Air 300 Models, refer to the Super King Air B300/B300C Fusion Maintenance Manual, Chapter 31, Input/Output Concentrator (IOC-3100) - Removal/Installation.
3. Connect an external power cart to the aircraft.
4. Set the external power cart switch to the ON position.
5. Using the list below make sure the following circuit breakers are engaged.
- AVIONICS MASTER (CB90)
  - MKP (CB27)
  - AVIONICS BUS TPL FED (CB91)
  - AVIONICS BUS L GEN (CB92)
  - AVIONICS BUS R GEN (CB93)
  - PFD 1 (CB111)
  - CCP (CB112)
  - MFD (CB101)
  - PFD 2 (CB105)
  - CCP 2 (CB106)
  - EQPT COOLING (CB69)
  - DC CONV 1 (CB74)
  - DC CONV 2 (CB76)
6. Put the BATT, EXT PWR, and the AVIONICS MASTER POWER Switches to the ON position.
7. Make sure that none of the circuit breakers from the list above have tripped.

8. Prepare a USB thumb drive with the Field Loadable software.
  - A. Using AFD Field Loadable Software, Part Number: 130M310006-0007, available for download on [txtavsupport.com](http://txtavsupport.com) use the procedure from the following maintenance manuals:
    - (1) For all King Air 200 Models, refer to the Super King Air B200GT/B200GT Fusion Maintenance Manual, Chapter 31, Adaptive Flight Display (AFD-3700) - Maintenance Practices.
    - (2) For all King Air 300 Models, refer to the Super King Air B300GT/B300GT Fusion Maintenance Manual, Chapter 31, Adaptive Flight Display (AFD-3700) - Maintenance Practices.

**NOTE:** The Aircraft Maintenance Manual (AMM) contains all steps for USB creation. The zip files downloaded from [txtavsupport.com](http://txtavsupport.com) will only need to be unzipped into the top level directory of the thumbdrive.
9. Do the software installation procedure using the prepped USB thumb drive as follows:
  - A. For all King Air 200 Models, refer to the Super King Air B200GT/B200GT Fusion Maintenance Manual, Chapter 31, Adaptive Flight Display (AFD-3700) - Maintenance Practices.
  - B. For all King Air 300 Models, refer to the Super King Air B300GT/B300GT Fusion Maintenance Manual, Chapter 31, Adaptive Flight Display (AFD-3700) - Maintenance Practices.
  - C. (Refer to Figure 1, Sheets 1 through 7.) For expected electronic nameplates to be seen during the verification steps of the applicable AMM procedures.
10. Make sure that the AFD software has been loaded as follows:

**NOTE:** During the verification procedures, each AFD software configuration in each AFD must be correct. If the software is not correctly loaded, then repeat Step 9.

  - A. Make sure that all three AFD-3700 Displays by setting the PFD1, PFD2, and MFD Display Reversion Switches are put to the NORM position.

**NOTE:** The switches are located on the Reversionary Panel.
  - B. Select "Home".
  - C. Select "Maint" (Maintenance) format on the center display.
  - D. Select "Done".
  - E. Select "Adv" (Advanced) Mode.
  - F. Select "System".

**NOTE:** The "IMA Sys" Tab will be selected by default.
  - G. After some time, the status will change to a green "Pass" condition.

**NOTE:** This may take up to 5 seconds for the format to update. If the system is configured correctly, the IMA system area will report a status of "Pass" for all three AFD-3700 units.
  - H. Select the "i" icon for a display next to the LEFT display.
  - I. (Refer to Figure 1, Sheet 1 and 2.) Make sure that the ICIT electronic nameplate contents correctly align with Figure 1, Sheet 1 and 2.
  - J. Select "X" to close out.
  - K. Select the "i" icon for a display next to the RIGHT display.
  - L. (Refer to Figure 1, Sheet 3 and 4.) Make sure that the ICIT electronic nameplate contents correctly align with Figure 1, Sheet 3 and 4.
  - M. Select "X" to close out.
  - N. Select the "i" icon for a display next to the CENTER display.

- O. (Refer to Figure 1, Sheet 5, 6, and 7.) Make sure that the ICIT electronic nameplate contents correctly align with Figure 1, Sheet 5, 6, and 7.
  - P. Select "X" to close out.
  - Q. Put the Avionics Master Power Switch to the OFF position.
  - R. Put the External Power Switch to the OFF position.
  - S. Put the Battery Switch to the OFF position.
11. Do the aircraft personality module (APM) software and validation procedure.
- A. For all King Air 200 Models, refer to the Super King Air B200GT/B200GT Fusion Maintenance Manual, Chapter 31, Aircraft Personality Module (APM-5000) - Maintenance Practices.
  - B. For all King Air 300 Models, refer to the Super King Air B300GT/B300GT Fusion Maintenance Manual, Chapter 31, Aircraft Personality Module (APM-5000) - Maintenance Practices.
12. Do the SMS key installation as follows:
- NOTE:** The installation of electric standard keys will be completed on the MFD only.
- NOTE:** If the user does not have the 810-0165-001 Enable Key, then the user must contact Rockwell Collins.
- A. Get the certificate of the software product authenticity for TLAF-5000 P/N 810-0165-001.
  - B. Put the BAT Switch to the ON position.
  - C. Put the EXT PWR Switch to the ON position.
  - D. Put the AVIONICS MASTER Switch to the ON position.
  - E. On the Reversionary Panel, make sure that the PFD1, PFD2, and MFD Reversion Switches are in the NORM position.
  - F. On the CCP, push the MFD button.
- NOTE:** The cursor shows on the center AFD.
- G. Push the Menu button.
- NOTE:** The Format Selection Page shows on the MFD.
- H. On the Format Selection page, select a MFD 1/2 page format icon from the top menu bar.
- NOTE:** The selected MFD 1/2 page format shows on the Format Selection Page.
- I. Push the MAINT (Maintenance) icon.
  - J. Push the Done button.
  - K. On the Maintenance Menu, select the License icon.
- NOTE:** The Application License Management page shows on the MFD.
- L. Make sure the APM-5000 serial number shown on the Application License Management page matches the APM serial number listed on the certification of software product authenticity.
13. Do the SMS Key Validation as follows:
- A. On the CCP, push the MFD button.
- NOTE:** The cursor shows on the MFD.
- B. Push the Menu button.
- NOTE:** The Format Selections Page shows on the MFD.

- C. On the Format Selections Page, select a MFD 1/2 page format icon from the top menu bar.
- NOTE:** The selected MFD 1/2 page format shows on the Format Selection Page.
- D. Select the MAINT (Maintenance) icon.
- E. Push the DONE button.
- F. On the Maintenance Menu, select the License icon.
- NOTE:** The Application License Management page shows on the MFD.
- G. On the Application License Management page, use the CCP to position the cursor over the scrolling bar such that the scrolling icons turn cyan.
- H. Rotate the CCP Knob to scroll through the list.
- I. (Reference Figure 3, Sheet 1.) Make sure the keys and their statuses are shown in green.
14. Do the takeoff and landing awareness key activation (TLAF-5000) as follows:
- A. On the Application License Management page, push the Activation Key button.
- B. Select the Activation Key data field.
- NOTE:** The Activation Key Data Field should be highlighted.
- C. With the use of the MKP, type in the Takeoff and Landing Awareness Key Authorization code number listed in the certificate of the software product authenticity.
- D. Push the ENTER button.
- NOTE:** On the Application License Management page, the annunciation "Processing" shows if a valid EAK is entered.
- E. Using the table below, make sure that the key and the status shown are in green.

Standard Key Installation Requirement			
Description	P/N	Quantity	Status
TLAF-5000 Takeoff and Landing Awareness Key	810-0165-001	1	Enabled

15. Do the Periodic Database Field Procedure.
- A. For all King Air 200 Models, refer to the Super King Air B200GT/B200CGT Fusion Maintenance Manual, Chapter 31, Adaptive Flight display (AFD-3700) - Maintenance Practices.
- B. For all King Air 300 Models, refer to the Super King Air B300/B300C Fusion Maintenance Manual, Chapter 31, Adaptive Flight display (AFD-3700) - Maintenance Practices.
16. Do the Input/Output Concentrator (IOC-3100) Test.
- A. For all King Air 200 Models, refer to the Super King Air B200GT/B200CGT Fusion Maintenance Manual, Chapter 31, Input/Output Concentrator (IOC-3100) - Adjustment/Test.
- B. For all King Air 300 Models, refer to the Super King Air B300/B300C Fusion Maintenance Manual, Chapter 31, Input/Output Concentrator (IOC-3100) - Adjustment/Test.

17. Make an entry in the airplane logbook that states compliance and method of compliance with this service document.

**NOTE:** Textron Aviation recommends that compliance with all service documents is reported to a maintenance tracking system provider.

- Complete a record of compliance. (Maintenance Transaction Report, Log Book Entry, or other record of compliance.)
- Put a copy of the completed record of compliance in the airplane logbook.
- Send a copy of the completed record of compliance to the maintenance tracking system provider used.

E76240

Electronic Nameplates for the Left Display	
Type No: AFD-3700 Position: Left PNR 822-3065-001	
Type AFDR-3700 FAA TSO C113b DO-178B LEVEL A/D PNR 810-0346-003 Rockwell Collins, Inc. Cedar Rapids, IA 52498 US CRC-32 8A471E74	MFR 0EFD0 DMF 2019-12-18
Type APCT-3700 FAA TSO C113a SEE INST MNL DO-178C Level A PNR 810-0422-007 Rockwell Collins, Inc. Cedar Rapids, IA 52498 US CRC-32 28200E4E	MFR 0EFD0 DMF 2021-08-04
Type FDSA-6500 FAA TSO C113 SEE INST MNL DO-178B Level A PNR 810-0234-1H0006 Rockwell Collins, Inc. Cedar Rapids, IA 52498 US CRC-32 E6209A77  130M310006-0007 ICIT-130M310006-0007 BLACK LABEL ICIT ASSEMBLY 130M310006-0007 FUSION SOFTWARE PHASE 4+ CRC-32 CAFAC705	MFR 0EFD0 DMF 2021-08-18
Type IMAT-3700 FAA TSO C113a SEE INST MNL DO-178B Level A PNR 810-0352-004 Rockwell Collins, Inc. Cedar Rapids, IA 52498 US CRC-32 D5BBAD7B	MFR 0EFD0 DMF 2017-04-11

Figure 1. Electronic Nameplates (Sheet 1)



E76242

Electronic Nameplates for the Left Display	
Type No: AFD-3700 Position: Left PNR 822-3085-001	
Type FSA-6000 FAA TSO C165 SEE INST MNL DO-178B Level D PNR 810-0072-304 Rockwell Collins, Inc. Cedar Rapids, IA 52498 US CRC-32 6C157BAD	MFR 0EFD0 DMF 2018-09-04
Type ECDA-6000 FAA TSO C113a SEE INST MNL DO-178B Level B PNR 810-0233-100 Rockwell Collins, Inc. Cedar Rapids, IA 52498 US CRC-32 4C3CA1E8	MFR 0EFD0 DMF 2014-08-21
Type EICAS-6000 FAA TSO C113 SEE INST MNL DO-178B Level B PNR 810-0245-1H0025 Rockwell Collins, Inc. Cedar Rapids, IA 52498 US CRC-32 A383A915	MFR 0EFD0 DMF 2021-08-11
Type RTSA-6000 FAA TSO C169a SEE INST MNL DO-178B Level B PNR 810-0048-702 Rockwell Collins, Inc. Cedar Rapids, IA 52498 US CRC-32 74160978	MFR 0EFD0 DMF 2017-02-21
Type ATF-3510 FAA TSO C151c Class A DO-178C Level C PNR 810-0391-004 Rockwell Collins, Inc. Cedar Rapids, IA 52498 US CRC-32 7E0D3428	MFR 0EFD0 DMF 2019-11-20
Type FMSA-6010 FAA TSO C146c Class Gamma 3 SEE INST MNL DO-178B Level B PNR 810-0163-1R0001 Rockwell Collins, Inc. Cedar Rapids, IA 52498 US CRC-32 5B829081	MFR 0EFD0 DMF 2016-09-19
Type PMA-6000 FAA TSO C146c Class Delta 4 SEE INST MNL DO-178B Level B PNR 810-0192-100 Rockwell Collins, Inc. Cedar Rapids, IA 52498 US CRC-32 C163C526	MFR 0EFD0 DMF 2014-10-20

Figure 1. Electronic Nameplates (Sheet 2)

E76243

Electronic Nameplates for the Right Display	
Type No: AFD-3700 Position: Right PNR 822-3065-001	
Type AFDR-3700 FAA TSO C113b DO-178B LEVEL A/D PNR 810-0346-003 Rockwell Collins, Inc. Cedar Rapids, IA 52498 US CRC-32 8A471E74	MFR 0EFD0 DMF 2019-12-18
Type APCT-3700 FAA TSO C113a SEE INST MNL DO-178C Level A PNR 810-0422-007 Rockwell Collins, Inc. Cedar Rapids, IA 52498 US CRC-32 28200E4E	MFR 0EFD0 DMF 2021-08-04
Type FDSA-6500 FAA TSO C113 SEE INST MNL DO-178B Level A PNR 810-0234-1H0006 Rockwell Collins, Inc. Cedar Rapids, IA 52498 US CRC-32 E6209A77  130M310006-0007 ICIT-130M310006-0007 BLACK LABEL ICIT ASSEMBLY 130M310006-0007 FUSION SOFTWARE PHASE 4+ CRC-32 CAFAC705	MFR 0EFD0 DMF 2021-08-18
Type IMAT-3700 FAA TSO C113a SEE INST MNL DO-178B Level A PNR 810-0352-004 Rockwell Collins, Inc. Cedar Rapids, IA 52498 US CRC-32 D5BBAD7B	MFR 0EFD0 DMF 2017-04-11

Figure 1. Electronic Nameplates (Sheet 3)

E76245

Electronic Nameplates for the Right Display	
Type No: AFD-3700 Position: Right PNR 822-3085-001	
Type FSA-8000 FAA TSO C165 SEE INST MNL DO-178B Level D PNR 810-0072-304 Rockwell Collins, Inc. Cedar Rapids, IA 52498 US CRC-32 6C157BAD	MFR 0EFD0 DMF 2018-09-04
Type ECDA-8000 FAA TSO C113a SEE INST MNL DO-178B Level B PNR 810-0233-100 Rockwell Collins, Inc. Cedar Rapids, IA 52498 US CRC-32 4C3CA1E6	MFR 0EFD0 DMF 2014-08-21
Type EICAS-6000 FAA TSO C113 SEE INST MNL DO-178B Level B PNR 810-0245-1H0025 Rockwell Collins, Inc. Cedar Rapids, IA 52498 US CRC-32 A383A915	MFR 0EFD0 DMF 2021-08-11
Type RTSA-8000 FAA TSO C169a SEE INST MNL DO-178B Level B PNR 810-0048-702 Rockwell Collins, Inc. Cedar Rapids, IA 52498 US CRC-32 74180978	MFR 0EFD0 DMF 2017-02-21
Type ATF-3510 FAA TSO C151c Class A DO-178C Level C PNR 810-0391-004 Rockwell Collins, Inc. Cedar Rapids, IA 52498 US CRC-32 7E0D3428	MFR 0EFD0 DMF 2019-11-20
Type FMSA-8010 FAA TSO C146c Class Gamma 3 SEE INST MNL DO-178B Level B PNR 810-0163-1R0001 Rockwell Collins, Inc. Cedar Rapids, IA 52498 US CRC-32 5B829061	MFR 0EFD0 DMF 2016-09-19
Type PMA-8000 FAA TSO C146c Class Delta 4 SEE INST MNL DO-178B Level B PNR 810-0192-100 Rockwell Collins, Inc. Cedar Rapids, IA 52498 US CRC-32 C163C526	MFR 0EFD0 DMF 2014-10-20

Figure 1. Electronic Nameplates (Sheet 4)

E76480

Electronic Nameplates for the Center Display	
<p style="text-align: center;">Type No: AFD-3700                      Position: Center                      PNR 822-3085-001</p> <p>Type AFDR-3700                      FAA TSO C113b                      DO-178B LEVEL A/D                      PNR 810-0346-003                      Rockwell Collins, Inc. Cedar Rapids, IA 52498 US                      CRC-32 8A471E74</p>	<p>MFR 0EFD0                      DMF 2019-12-18</p>
<p>Type APCT-3700                      FAA TSO C113a SEE INST MNL                      DO-178C Level A                      PNR 810-0422-007                      Rockwell Collins, Inc. Cedar Rapids, IA 52498 US                      CRC-32 28200E4E</p> <p>Type FDSA-6500                      FAA TSO C113 SEE INST MNL                      DO-178B Level A                      PNR 810-0234-1H0006                      Rockwell Collins, Inc. Cedar Rapids, IA 52498 US                      CRC-32 E6209A77</p>	<p>MFR 0EFD0                      DMF 2021-08-04</p> <p>MFR 0EFD0                      DMF 2021-08-18</p>
<p>130M310006-0007                      ICIT-130M310006-0007                      BLACK LABEL ICIT ASSEMBLY                      130M310006-0007                      FUSION SOFTWARE PHASE 4+                      CRC-32 CAFAC705</p> <p>Type IMAT-3700                      FAA TSO C113a SEE INST MNL                      DO-178B Level A                      PNR 810-0352-004                      Rockwell Collins, Inc. Cedar Rapids, IA 52498 US                      CRC-32 D5BBAD7B</p>	<p>MFR 0EFD0                      DMF 2017-04-11</p>

Figure 1. Electronic Nameplates (Sheet 5)

E76481

Electronic Nameplates for the Center Display	
Type No: AFD-3700 Position: Center PNR 822-3065-001	
Type FSA-6000 FAA TSO C165 SEE INST MNL DO-178B Level D PNR 810-0072-304 Rockwell Collins, Inc. Cedar Rapids, IA 52498 US CRC-32 6C157BAD	MFR 0EFD0 DMF 2018-09-04
Type ECDA-6000 FAA TSO C113a SEE INST MNL DO-178B Level B PNR 810-0233-100 Rockwell Collins, Inc. Cedar Rapids, IA 52498 US CRC-32 4C3CA1E6	MFR 0EFD0 DMF 2014-08-21
Type EICAS-6000 FAA TSO C113 SEE INST MNL DO-178B Level B PNR 810-0245-1H0025 Rockwell Collins, Inc. Cedar Rapids, IA 52498 US CRC-32 A383A915	MFR 0EFD0 DMF 2021-08-11
Type ODLA-3500 FAA TSO C113a SEE INST MNL DO-178B Level D PNR 810-0345-1R0001 Rockwell Collins, Inc. Cedar Rapids, IA 52498 US CRC-32 937FF091	MFR 0EFD0 DMF 2016-09-07
Type OMSA-6000 FAA TSO C113a SEE INST MNL DO-178B Level C/D PNR 810-0106-251 Rockwell Collins, Inc. Cedar Rapids, IA 52498 US CRC-32 2137DB81	MFR 0EFD0 DMF 2017-03-15
Type OMST-6000 FAA TSO C113a SEE INST MNL DO-178C Level C/D PNR 810-0099-1H0004 Rockwell Collins, Inc. Cedar Rapids, IA 52498 US CRC-32 014B1D30	MFR 0EFD0 DMF 2019-12-17
Type RTSA-6000 FAA TSO C169a SEE INST MNL DO-178B Level B PNR 810-0048-702 Rockwell Collins, Inc. Cedar Rapids, IA 52498 US CRC-32 74160978	MFR 0EFD0 DMF 2017-02-21

Figure 1. Electronic Nameplates (Sheet 6)

E76482

Electronic Nameplates for the Center Display	
Type No: AFD-3700 Position: Center PNR 822-3065-001	
Type ATF-3510 FAA TSO C151c Class A DO-178C Level C PNR 810-0391-004 Rockwell Collins, Inc. Cedar Rapids, IA 52498 US CRC-32 7E0D3428	MFR 0EFD0 DMF 2019-11-20
Type FMSA-6010 FAA TSO C146c Class Gamma 3 SEE INST MNL DO-178B Level B PNR 810-0163-1R0001 Rockwell Collins, Inc. Cedar Rapids, IA 52498 US CRC-32 5B829061	MFR 0EFD0 DMF 2016-09-19
Type PMA-6000 FAA TSO C146c Class Delta 4 SEE INST MNL DO-178B Level B PNR 810-0192-100 Rockwell Collins, Inc. Cedar Rapids, IA 52498 US CRC-32 C163C526	MFR 0EFD0 DMF 2014-10-20

Figure 1. Electronic Nameplates (Sheet 7)

E76318

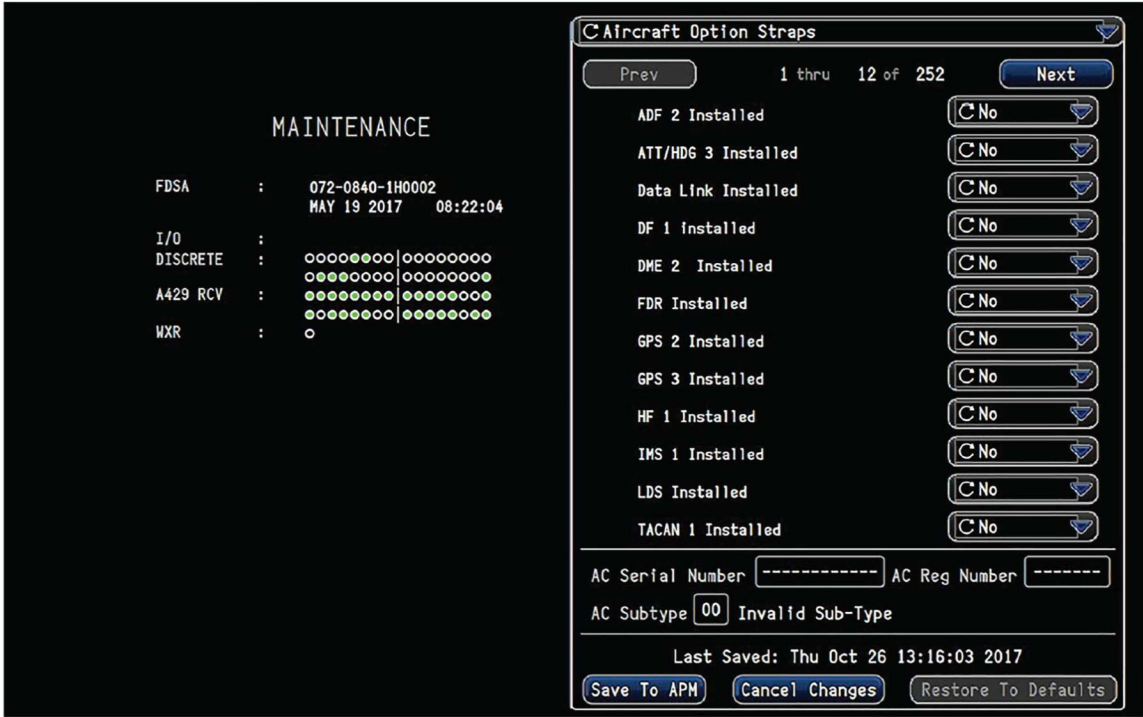


Figure 2. Aircraft Straps (Sheet 1)

E76246

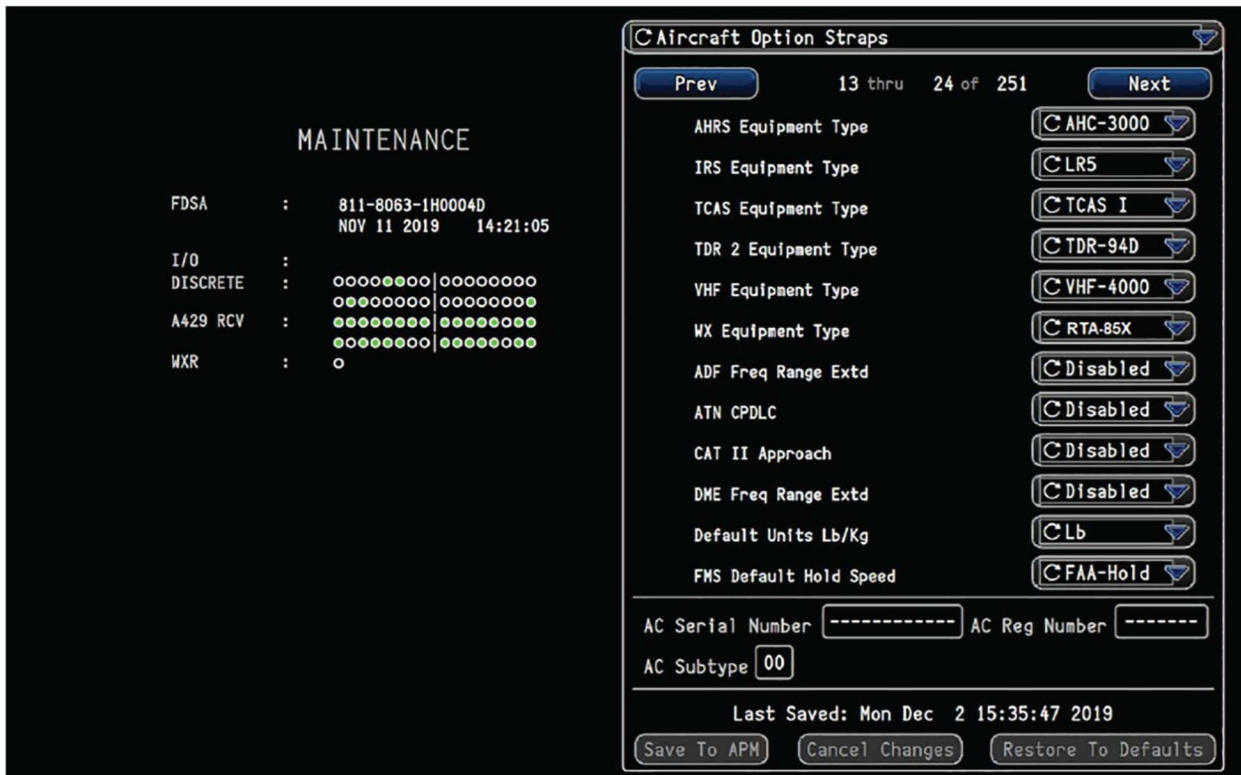


Figure 2. Aircraft Straps (Sheet 2)



E76247

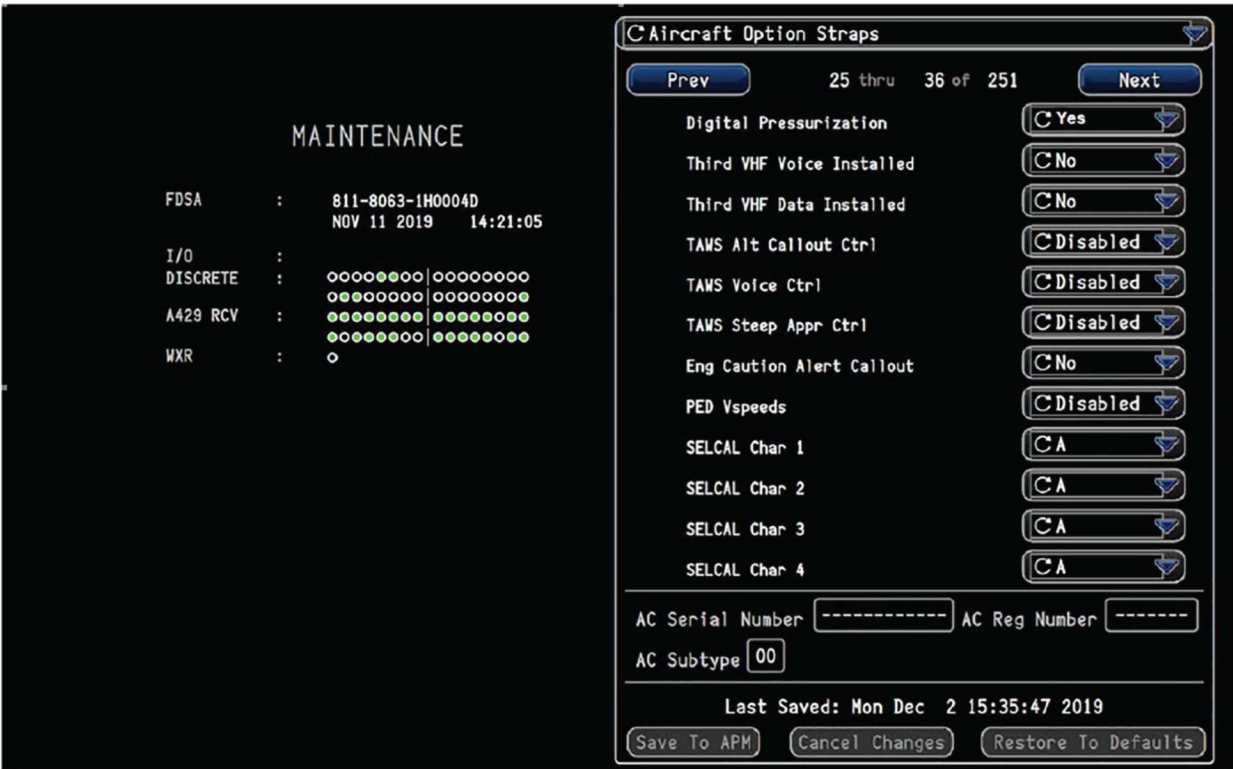


Figure 2. Aircraft Straps (Sheet 3)

E76248

STANDARD KEY INSTALLATION REQUIREMENT			
Description	P/N	Quantity	Status
ECH-3500 Electronic Charts Key	810-0361-001	1	Enabled
FSAX-3500 FSA Extension (EDS IFIS)	810-0354-001	1	Enabled
OVL-3500 Enhanced Maps Overlays Key	810-0360-001	1	Enabled
TAWK-3510 Integrated Terrain Awareness & Warning System (ITAWS) Key	810-0571-001	1	Enabled
CHTX-3500 IFIS (Integrated Flight Information System) Chart Extension	810-0476-001	1	Enabled
XMWX-3500 XM Weather Software Key	810-0355-001	1	Enabled

Figure 3. Key Installation Verification (Sheet 1)

**MATERIAL INFORMATION**

Order the parts below to install this modification.

NEW P/N	QUAN- TITY	KEY WORD	OLD P/N	INSTRUCTIONS/ DISPOSITION
822-1361-623	2	Input/Output Concentrator (IOC)	822-1361-622	Return to Textron Aviation.

**NOTE:** Please contact Textron Aviation Parts Distribution for upgrade.

Contact the Textron Aviation Parts Distribution Repair Team to schedule your unit at [citationrepair@txtav.com](mailto:citationrepair@txtav.com) available 8:00 - 4:30 CST weekdays. Advance notification and coordination is required for Textron Aviation Parts Distribution Repair Team to effectively schedule units, ship to supplier and arrange return. A Customer Repair Request Form is available online at [ww2.txtav.com/Parts](http://ww2.txtav.com/Parts) that is required to ship with every repair. The expected turn time for the supplier supporting this service document is 21 days.

\* Please contact your Regional Textron Aviation Parts Distribution Customer Support Team for current cost and availability of parts listed in this service document. Phone at 1-800-835-4000 (Domestic) or 1-316-517-5603 (International).

For more information, please visit the TAPD Support & Aftermarket Account Management website at <https://ww2.txtav.com/Parts/Promos/TAPD>.

Based on availability and lead times, parts may require advanced scheduling.



**TITLE**

NAVIGATION - FIELD UPGRADED PROLINE FUSION PHASE 3 TO PHASE 4 SOFTWARE

**TO:**

Beechcraft B200 and B300 Model Aircraft Owners

**REASON**

For aircraft that were upgraded to Phase 3 Software in the field and will be upgraded to Phase 4 Software.

**NOTE:** The aircraft listed in the effectivity list must have previously complied with the service document SB 34-4171: Proline Fusion Upgrade to Phase 3 Software prior to completing this service document.

**COMPLIANCE**

DISCRETIONARY. This service document can be accomplished at the discretion of the owner.

**LABOR HOURS**

WORK PHASE	LABOR-HOURS
Modification	8

**MATERIAL AVAILABILITY**

PART NUMBER	AVAILABILITY	COST
822-1361-623REP	*	*

**NOTE:** Please contact Textron Aviation Parts Distribution for upgrade.

Contact the Textron Aviation Parts Distribution Repair Team to schedule your unit at [citationrepair@txtav.com](mailto:citationrepair@txtav.com) available 8:00 - 4:30 CST weekdays. Advance notification and coordination is required for Textron Aviation Parts Distribution Repair Team to effectively schedule units, ship to supplier and arrange return. A Customer Repair Request Form is available online at [ww2.txtav.com/Parts](http://ww2.txtav.com/Parts) that is required to ship with every repair. The expected turn time for the supplier supporting this service document is 21 days.

\* Please contact your Regional Textron Aviation Parts Distribution Customer Support Team for current cost and availability of parts listed in this service document. Phone at 1-800-835-4000 (Domestic) or 1-316-517-5603 (International).

For more information, please visit the TAPD Support & Aftermarket Account Management website at <https://ww2.txtav.com/Parts/Promos/TAPD>.

Based on availability and lead times, parts may require advanced scheduling.

In cases where the required part(s) are approved as exchange, order the exchange part and, upon completion, expedite the return of the removed part to avoid return penalties. Contact the Textron Aviation Parts Distribution Sales Desk for availability of exchange parts.

**WARRANTY**

Eligible airplanes exhibiting conditions described in this service document may demonstrate improved operation by incorporation of the work described herein. This service document is to be accomplished at

September 16, 2022

MTB-34-05  
Page 1 of 2

Textron Aviation Customer Service, P.O. Box 7706, Wichita, KS 67277, U.S.A. 1-316-517-5800

This document contains technical data and is subject to U.S. export regulations. This information has been exported from the United States in accordance with export administration regulations. Diversion contrary to U.S. law is prohibited. ECCN: 9E991

the *discretion* of the owner. Eligible airplanes may qualify for parts and labor coverage to the extent noted in the *Labor Hours* and *Material Availability* sections of this document.

**Eligibility:** Airplanes identified within the serial number effectivity of this service document must have active Airframe warranty coverage on the original issue date of this document and the coverage must be active on the day the work is accomplished.

**Parts Coverage:** Textron Aviation-owned and Textron Aviation-authorized Service Facilities, operators, or other maintenance facilities may submit a claim for the parts required to accomplish this service document as defined in the *Material Availability* section of this document.

**Labor Coverage:** Textron Aviation-owned and Textron Aviation-authorized Service Facilities rated to perform maintenance on the specific model of Beechcraft Aircraft may submit a claim for the labor necessary to accomplish this service document as defined in the *Labor Hours* section of this document.

**Credit Application:** After this service document has been accomplished, a claim must be submitted to Textron Aviation within 30 days of the service document completion. Claims for compliance of this service document are to be filed as a W4 type claim.

Please submit your claim form online at [ww2.txtav.com/Parts](http://ww2.txtav.com/Parts) or email the completed Textron Aviation Claim Form to [warranty@txtav.com](mailto:warranty@txtav.com). If submitted on-line a Return Authorization will be provided. If a paper claim is submitted your claim will be entered into the system and a Return Authorization will be sent to you.

The Return Authorization must accompany any required return parts (see *Material Availability*), to the point of purchase.

Parts to be returned to Textron Aviation Parts Distribution should be forwarded to:

Textron Aviation Parts Distribution  
Warranty Administration  
285 South Greenwich Road  
Bldg B89, Docks 1-4  
Wichita, KS 67206  
USA

**Expiration:** September 16, 2024 (after this date the owner/operator assumes the responsibility for compliance costs)

Textron Aviation reserves the right to void continued airplane warranty coverage for the parts affected by this service document until the service document is accomplished.

**NOTE:** As a convenience, service documents are now available online to all our customers through a simple, free-of-charge registration process. If you would like to sign up, please visit the Customer Access link at [www.txtavsupport.com](http://www.txtavsupport.com) to register.