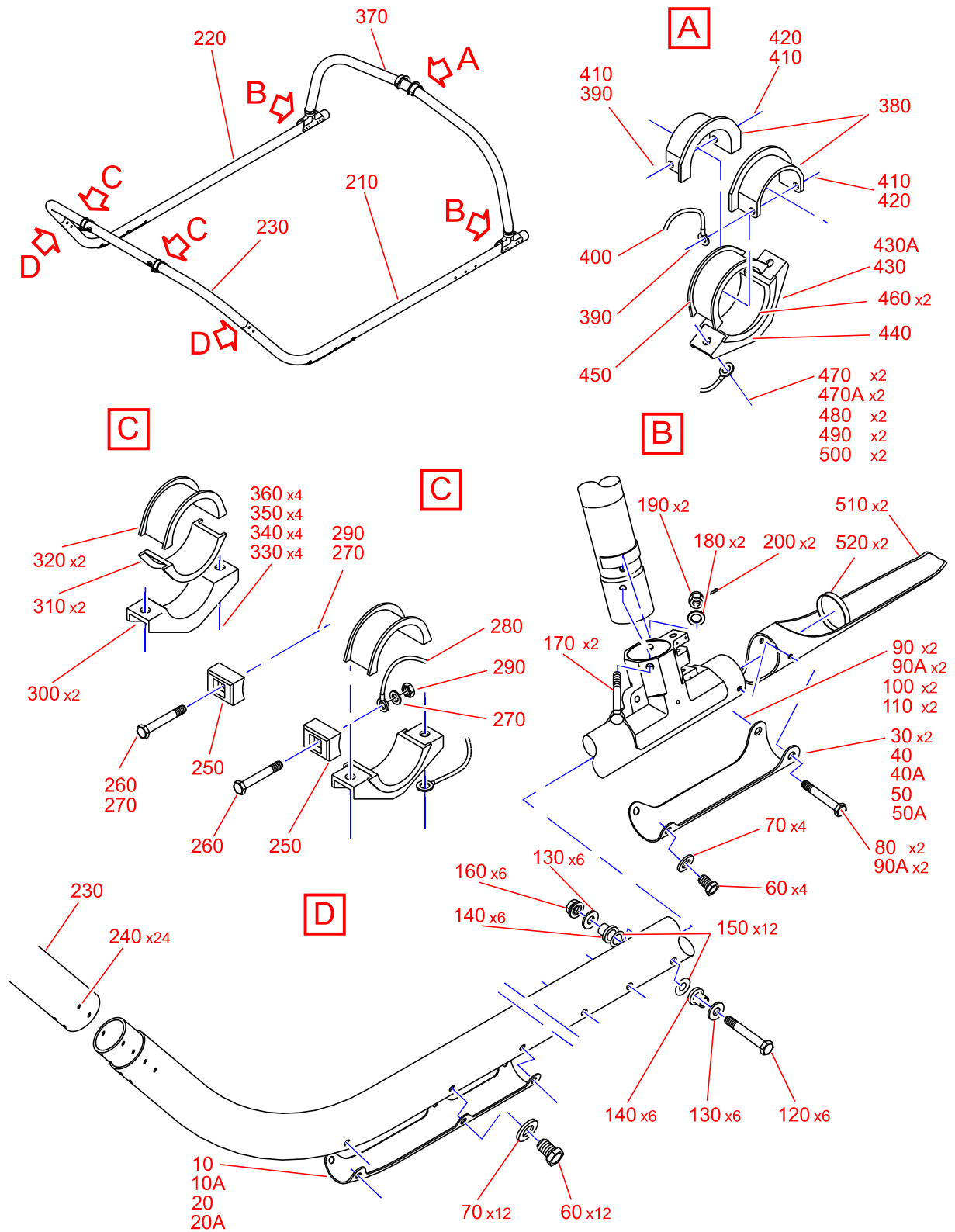


LANDING GEAR ASSY

IPC 32-12-01-02



THE DOCUMENT REFERENCE IS AVAILABLE ONLINE. PLEASE CHECK IF THE ONLINE DOCUMENTATION CORRESPONDS TO THE PRINTED VERSION

LANDING GEAR ASSY

Figure 1/1

C120003212010200001

Item	FSCM	MPN	Designation	Qty
-01	F0210	C321A2601051AA	LANDING GEAR ASSY, EQUIPPED 1393-1638 NOT ILLUSTRATED Refer to 32-00-00-01-1C	REF
-01A	F0210	NO NUMBER	LANDING GEAR ASSY (AFTER SB: 32-006) 1639-1700 NOT ILLUSTRATED Refer to 32-00-00-01-1D	REF
10	F0210	C321A2121201	• FRETTING SHEET,FWD LH 1393-1700	1
10A	F0210	CTI-EC120-2000-13	• FRETTING SHEET,FWD LH (ALTERNATE PART NUMBER: PNR=7052A3321021; MFR=F0210) (ALTERNATE PART NUMBER: PNR=CTIEC120200013; MFR=F0210) (OPTION:REINFORCED SHOE) 1393-1700	1
20	F0210	C321A2120201	• FRETTING SHEET,FWD RH 1393-1700	1
20A	F0210	CTI-EC120-2000-12	• FRETTING SHEET,FWD RH (ALTERNATE PART NUMBER: PNR=7052A3321023; MFR=F0210) (ALTERNATE PART NUMBER: PNR=CTIEC120200012; MFR=F0210) (OPTION:REINFORCED SHOE) 1393-1700	1
30	F0210	C321A1024201	• FRETTING SHEET,BACK 1393-1700	2
40	F0210	CTI-EC120-2000-15	• FRETTING SHEET,BACK LH (ALTERNATE PART NUMBER: PNR=7052A3321022; MFR=F0210) (ALTERNATE PART NUMBER: PNR=CTIEC120200015; MFR=F0210) (OPTION:REINFORCED SHOE) 1393-1700	1
40A	F0210	CTI-EC120-2000-17	• FRETTING SHEET,LONG REINFORC.BACK LH (ALTERNATE PART NUMBER: PNR=7052A3321025; MFR=F0210) (ALTERNATE PART NUMBER: PNR=EC120200017; MFR=F0210) (OPTION:LONG REINFORCED SHOE) 1393-1700	1
50	F0210	CTI-EC120-2000-14	• FRETTING SHEET,BACK RH (ALTERNATE PART NUMBER: PNR=7052A3321024; MFR=F0210) (ALTERNATE PART NUMBER: PNR=CTIEC120200014; MFR=F0210) (OPTION:REINFORCED SHOE) 1393-1700	1
50A	F0210	CTI-EC120-2000-16	• FRETTING SHEET,LONG REINFORC.BACK RH (ALTERNATE PART NUMBER: PNR=7052A3321026; MFR=F0210) (ALTERNATE PART NUMBER: PNR=EC120200016; MFR=F0210) (OPTION:LONG REINFORCED SHOE) 1393-1700	1

Item	FSCM	MPN	Designation	Qty
60	F0111	22125BC050015L	• SCREW 1393-1700	16
70	F0111	23111AG050LE	• WASHER (ALTERNATE PART NUMBER: PNR=L23111-50AGL; MFR=F0111) 1393-1700	16
80	F0210	DHS411-101.2076	• SCREW (ALTERNATE PART NUMBER: PNR=DHS411-101-2076; MFR=F0210) 1393-1700	2
90	F0111	23119AG080LE	• WASHER (ALTERNATE PART NUMBER: PNR=L23119-80AGL; MFR=F0111) 1393-1700	2
90A	F0111	23112AG080LE	• WASHER, FLAT (ALTERNATE PART NUMBER: PNR=L23112-80AGL; MFR=F0111) (OPTION:REINFORCED SHOE) 1393-1700	4
100	F5442	ASNA0045BC080L	• NUT (ALTERNATE PART NUMBER: PNR=52347-080BCL; MFR=F5442) (ALTERNATE PART NUMBER: PNR=8PCR106; MFR=F0224) (ALTERNATE PART NUMBER: PNR=ASNA0045-080BCL; MFR=F5442) (ALTERNATE PART NUMBER: PNR=SNAC-H080BCL; MFR=F2094) 1393-1700	2
110	I9005	EN2367-18028	• PIN,COTTER 1393-1700	2
120	F0111	22201BE120102L	• SCREW 1393-1700	6
130	F5442	ASNA0265-120	• WASHER 1393-1700	12
140	F0210	C321A1006202	• SPACER 1393-1700	12
150	F0210	984427DG12D	• WASHER 1393-1700	12
160	F5442	ASN52320BH120N	• NUT (ALTERNATE PART NUMBER: PNR=12PH135M; MFR=F0224) 1393-1700	6
170	F0210	DHS411-101.3082	• SCREW (ALTERNATE PART NUMBER: PNR=DHS411-101-3082; MFR=F0210) 1393-1700	2
180	F0111	23119AG100LE	• WASHER (ALTERNATE PART NUMBER: PNR=L23119-100AGLE; MFR=F0111) 1393-1700	2

THE DOCUMENT REFERENCE IS AVAILABLE ONLINE. PLEASE CHECK IF THE ONLINE DOCUMENTATION CORRESPONDS TO THE PRINTED VERSION

Item	FSCM	MPN	Designation	Qty
190	F5442	ASNA0045BC100L	• NUT (ALTERNATE PART NUMBER: PNR=10PCR106; MFR=F0224) (ALTERNATE PART NUMBER: PNR=52347-100BCL; MFR=F5442) (ALTERNATE PART NUMBER: PNR=ASNA0045-100BCL; MFR=F5442) (ALTERNATE PART NUMBER: PNR=PCR106; MFR=F0224) (ALTERNATE PART NUMBER: PNR=SNACH100BCL; MFR=F0224) 1393-1700	2
200	I9005	EN2367-18028	• PIN,COTTER 1393-1700	2
210	F0210	C321A2503102	• PAD ASSY,LH 1393-1700	1
220	F0210	C321A2502102	• PAD ASSY,RH 1393-1700	1
230	F0210	C321A2506102	• CROSS BEAM,FWD 1393-1700	1
240	F5442	ASNA0027SB0604	• RIVET 1393-1700	24
250	F0210	C321A1007202	• STOP,FWD 1393-1700	2
260	F0111	22201BE080079L	• SCREW 1393-1700	2
270	F0111	23111AG080LE	• WASHER (ALTERNATE PART NUMBER: PNR=L23111-80AGL; MFR=F0111) 1393-1700	3
280	F5442	E0089-54-100	• BONDING JUMPER 1393-1700	1
290	F5442	ASN52320BH080N	• NUT 1393-1700	2
300	F0210	C321A2117202	• CLAMP,FWD 1393-1700	2
310	F0210	C321A2119201	• HALF-BEARING,LOWER 1393-1700	2
320	F0210	C321A2118201	• HALF-BEARING,UPPER 1393-1700	2
330	F0111	22201BE080012L	• SCREW (ALTERNATE PART NUMBER: PNR=L22201-80-12BEL; MFR=F0111) (SEE 53-37-04 FIG.01) 1393-1700	4
340	F0111	23111AG080LE	• WASHER (ALTERNATE PART NUMBER: PNR=L23111-80AGL; MFR=F0111) 1393-1700	4

Item	FSCM	MPN	Designation	Qty
350	97393	SL40568M8C	• NUT, PLAIN, BARREL 1393-1700	4
360	B1103	SLR40568-M8	• SPRING,RETAINING 1393-1700	4
370	F0210	C321A2507101	• CROSS BEAM,AFT 1393-1700	1
380	F0210	C321A2115203	• STOP,AFT 1393-1700	2
390	F0111	22201BE080084L	• SCREW 1393-1700	2
400	F0210	993303-108-8	• BRAID ELECTRICAL BONDING 1393-1700	1
410	F0111	23111AG080LE	• WASHER (ALTERNATE PART NUMBER: PNR=L23111-80AGL; MFR=F0111) 1393-1700	3
420	F5442	ASN52320BH080N	• NUT 1393-1700	2
430	F0210	C321A2116201	• CLAMP,AFT (NP) 1393-1638	1
430A	F0210	C321A2122101	• CLAMP,AFT (AFTER SB: 32-006) 1639-1700	1
440	F0210	C321A2119201	• HALF-BEARING,LOWER 1393-1700	1
450	F0210	C321A2118201	• HALF-BEARING,UPPER 1393-1700	1
460	F0210	C321A2510201	• BACKING BAND,REAR (WITH FLOATATION EMERGENCY- AFTER SB: 25-001REV1) 1393-1700	2
470	F0111	22201BE080015L	• SCREW (ALTERNATE PART NUMBER: PNR=L22201-80-15BEL; MFR=F0111) 1393-1638	2
470A	F0111	22201BE080020L	• SCREW (AFTER SB: 32-006) 1639-1700	2
480	F0111	23111AG080LE	• WASHER (ALTERNATE PART NUMBER: PNR=L23111-80AGL; MFR=F0111) 1393-1700	2

Item	FSCM	MPN	Designation	Qty
490	97393	SL40568M8C	• NUT, PLAIN, BARREL 1393-1700	2
500	B1103	SLR40568-M8	• SPRING,RETAINING 1393-1700	2
510	F0210	C321A2505203	• SKID 1393-1700	2
520	F0210	C321A2509202	• BLANK,SKID 1393-1700	2

End of Document

THE DOCUMENT REFERENCE IS AVAILABLE ONLINE. PLEASE CHECK IF THE ONLINE DOCUMENTATION CORRESPONDS TO THE PRINTED VERSION