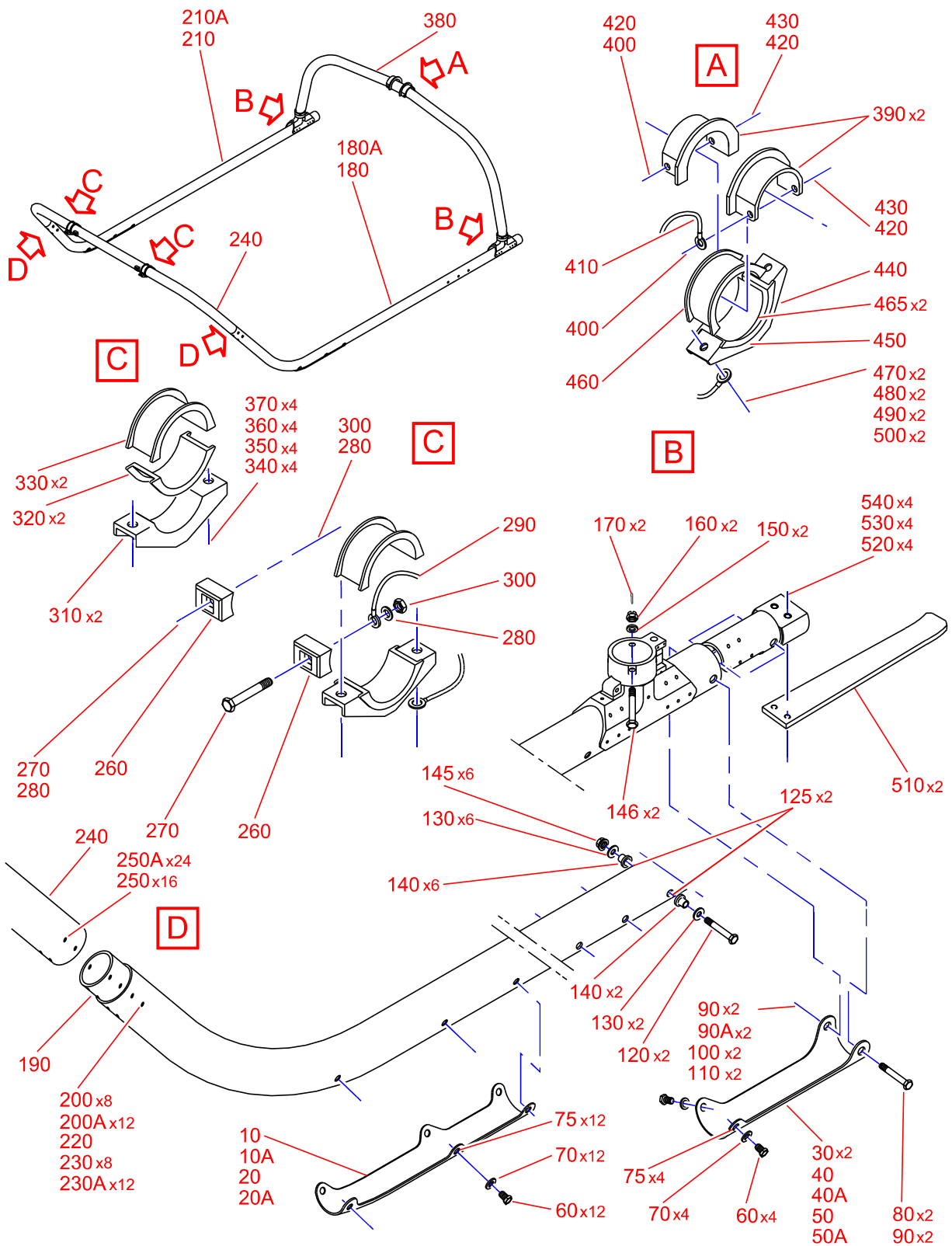


# LANDING GEAR ASSY

IPC 32-12-00-01



THE DOCUMENT REFERENCE IS AVAILABLE ONLINE. PLEASE CHECK IF THE ONLINE DOCUMENTATION CORRESPONDS TO THE PRINTED VERSION

## LANDING GEAR ASSY

Figure 1/1

C120003212000100003

Item	FSCM	MPN	Designation	Qty
-01	F0210	NO NUMBER	LANDING GEAR ASSY 1001-1003, 1005-1129 NOT ILLUSTRATED Refer to <a href="#">32-00-00-01-01</a>	REF
-01A	F0210	NO NUMBER	LANDING GEAR ASSY 1130-1390 NOT ILLUSTRATED Refer to <a href="#">32-00-00-01-1A</a>	REF
10	F0210	C321A2121201	• FRETTING SHEET,FWD LH 1001-1003, 1005-1390	1
10A	F0210	CTI-EC120-2000-13	• FRETTING SHEET,FWD LH (ALTERNATE PART NUMBER: PNR=7052A3321021; MFR=F0210) (ALTERNATE PART NUMBER: PNR=CTIEC120200013; MFR=F0210) (OPTION:REINFORCED SHOE) 1001-1003, 1005-1390	1
20	F0210	C321A2120201	• FRETTING SHEET,FWD RH 1001-1003, 1005-1390	1
20A	F0210	CTI-EC120-2000-12	• FRETTING SHEET,FWD RH (ALTERNATE PART NUMBER: PNR=7052A3321023; MFR=F0210) (ALTERNATE PART NUMBER: PNR=CTIEC120200012; MFR=F0210) (OPTION:REINFORCED SHOE) 1001-1003, 1005-1390	1
30	F0210	C321A1024201	• FRETTING SHEET,BACK 1001-1003, 1005-1390	2
40	F0210	CTI-EC120-2000-15	• FRETTING SHEET,BACK LH (ALTERNATE PART NUMBER: PNR=7052A3321022; MFR=F0210) (ALTERNATE PART NUMBER: PNR=CTIEC120200015; MFR=F0210) (OPTION:REINFORCED SHOE) 1001-1003, 1005-1390	1
40A	F0210	CTI-EC120-2000-17	• FRETTING SHEET,LONG REINFORC.BACK LH (ALTERNATE PART NUMBER: PNR=7052A3321025; MFR=F0210) (ALTERNATE PART NUMBER: PNR=EC120200017; MFR=F0210) (OPTION:LONG REINFORCED SHOE) 1001-1003, 1005-1390	1
50	F0210	CTI-EC120-2000-14	• FRETTING SHEET,BACK RH (ALTERNATE PART NUMBER: PNR=7052A3321024; MFR=F0210) (ALTERNATE PART NUMBER: PNR=CTIEC120200014; MFR=F0210) (OPTION:REINFORCED SHOE) 1001-1003, 1005-1390	1
50A	F0210	CTI-EC120-2000-16	• FRETTING SHEET,LONG REINFORC.BACK RH (ALTERNATE PART NUMBER: PNR=7052A3321026; MFR=F0210) (ALTERNATE PART NUMBER: PNR=EC120200016; MFR=F0210) (OPTION:LONG REINFORCED SHOE) 1001-1003, 1005-1390	1

Item	FSCM	MPN	Designation	Qty
60	F0111	22125BC050015L	• SCREW 1001-1003, 1005-1390	16
70	F0111	23111AG050LE	• WASHER (ALTERNATE PART NUMBER: PNR=L23111-50AGL; MFR=F0111) 1001-1003, 1005-1390	16
75	F5442	ASNA0320-05030A	• NUT 1001-1003, 1005-1390	16
80	F0210	DHS411-101.2076	• SCREW (ALTERNATE PART NUMBER: PNR=DHS411-101-2076; MFR=F0210) 1001-1003, 1005-1390	2
90	F0111	23119AG080LE	• WASHER (ALTERNATE PART NUMBER: PNR=L23119-80AGL; MFR=F0111) 1001-1003, 1005-1390	2
90A	F0111	23112AG080LE	• WASHER, FLAT (ALTERNATE PART NUMBER: PNR=L23112-80AGL; MFR=F0111) (OPTION:REINFORCED SHOE) 1001-1003, 1005-1390	4
100	F5442	ASNA0045BC080L	• NUT (ALTERNATE PART NUMBER: PNR=52347-080BCL; MFR=F5442) (ALTERNATE PART NUMBER: PNR=8PCR106; MFR=F0224) (ALTERNATE PART NUMBER: PNR=ASNA0045-080BCL; MFR=F5442) (ALTERNATE PART NUMBER: PNR=SNAC-H080BCL; MFR=F2094) 1001-1003, 1005-1390	2
110	I9005	EN2367-18028	• PIN,COTTER 1001-1003, 1005-1390	2
120	F0111	22201BE120102L	• SCREW 1001-1003, 1005-1390	6
125	F0210	984427DG12D	• WASHER 1001-1003, 1005-1390	12
130	F5442	ASNA0265-120	• WASHER 1001-1003, 1005-1390	12
140	F0210	C321A1006201	• SPACER 1001-1003, 1005-1390	12
145	F5442	ASN52320BH120N	• NUT (ALTERNATE PART NUMBER: PNR=12PH135M; MFR=F0224) 1001-1003, 1005-1390	6
146	F0210	DHS411-101.3080	• SCREW (ALTERNATE PART NUMBER: PNR=DHS411-101-3080; MFR=F0210) 1001-1003, 1005-1390	2

Item	FSCM	MPN	Designation	Qty
150	F0111	23111AG100LE	• WASHER, FLAT (ALTERNATE PART NUMBER: PNR=L23111-100AGL; MFR=F0111) 1001-1003, 1005-1390	2
160	F5442	ASNA0045BC100L	• NUT (ALTERNATE PART NUMBER: PNR=10PCR106; MFR=F0224) (ALTERNATE PART NUMBER: PNR=52347-100BCL; MFR=F5442) (ALTERNATE PART NUMBER: PNR=ASNA0045-100BCL; MFR=F5442) (ALTERNATE PART NUMBER: PNR=PCR106; MFR=F0224) (ALTERNATE PART NUMBER: PNR=SNACH100BCL; MFR=F0224) 1001-1003, 1005-1390	2
170	I9005	EN2367-18028	• PIN,COTTER 1001-1003, 1005-1390	2
180	F0210	C321A2107101	• PAD ASSY,LH 1001-1003, 1005-1129	1
180A	F0210	C321A2107102	• PAD ASSY,LH (NP) 1001-1003, 1005-1390	1
190	F0210	C321A2114201	•• SLEEVE 1001-1003, 1005-1390	1
200	F5442	ASNA0027SB0504	•• RIVET,BLIND 1001-1003, 1005-1129	8
200A	F5442	ASNA0027SB0604	•• RIVET 1130-1390	12
210	F0210	C321A2108101	• PAD ASSY,RH 1001-1003, 1005-1129	1
210A	F0210	C321A2108102	• PAD ASSY,RH (NP) 1001-1003, 1005-1390	1
220	F0210	C321A2114201	•• SLEEVE 1001-1003, 1005-1390	1
230	F5442	ASNA0027SB0504	•• RIVET,BLIND 1001-1003, 1005-1129	8
230A	F5442	ASNA0027SB0604	•• RIVET 1130-1390	12
240	F0210	C321A2104101	• CROSS BEAM,FWD 1001-1003, 1005-1390	1
250	F5442	ASNA0027SB0504	• RIVET,BLIND 1001-1003, 1005-1129	16
250A	F5442	ASNA0027SB0604	• RIVET 1130-1390	24

THE DOCUMENT REFERENCE IS AVAILABLE ONLINE. PLEASE CHECK IF THE ONLINE DOCUMENTATION CORRESPONDS TO THE PRINTED VERSION

Item	FSCM	MPN	Designation	Qty
260	F0210	C321A1007201	• STOP,FWD 1001-1003, 1005-1390	2
270	F0111	22201BE080079L	• SCREW 1001-1003, 1005-1390	2
280	F0111	23111AG080LE	• WASHER (ALTERNATE PART NUMBER: PNR=L23111-80AGL; MFR=F0111) 1001-1003, 1005-1390	3
290	F0210	993303-108-8	• BRAID ELECTRICAL BONDING 1001-1003, 1005-1390	1
300	F5442	ASN52320BH080N	• NUT 1001-1003, 1005-1390	2
310	F0210	C321A2117202	• CLAMP,FWD 1001-1003, 1005-1390	2
320	F0210	C321A2119201	• HALF-BEARING,LOWER 1001-1003, 1005-1390	2
330	F0210	C321A2118201	• HALF-BEARING,UPPER 1001-1003, 1005-1390	2
340	F0111	22201BE080012L	• SCREW (ALTERNATE PART NUMBER: PNR=L22201-80-12BEL; MFR=F0111) (SEE 53-37-04 FIG.01) 1001-1003, 1005-1390	4
350	F0111	23111AG080LE	• WASHER (ALTERNATE PART NUMBER: PNR=L23111-80AGL; MFR=F0111) 1001-1003, 1005-1390	4
360	97393	SL40568M8C	• NUT, PLAIN, BARREL 1001-1003, 1005-1390	4
370	B1103	SLR40568-M8	• SPRING,RETAINING 1001-1003, 1005-1390	4
380	F0210	C321A2105101	• CROSS BEAM,AFT 1001-1003, 1005-1390	1
390	F0210	C321A2115202	• STOP,AFT 1001-1003, 1005-1390	2
400	F0111	22201BE080084L	• SCREW 1001-1003, 1005-1390	2
410	F0210	993303-108-8	• BRAID ELECTRICAL BONDING 1001-1003, 1005-1390	1
420	F0111	23111AG080LE	• WASHER (ALTERNATE PART NUMBER: PNR=L23111-80AGL; MFR=F0111) 1001-1003, 1005-1390	3

THE DOCUMENT REFERENCE IS AVAILABLE ONLINE. PLEASE CHECK IF THE ONLINE DOCUMENTATION CORRESPONDS TO THE PRINTED VERSION

Item	FSCM	MPN	Designation	Qty
430	F5442	ASN52320BH080N	• NUT 1001-1003, 1005-1390	2
440	F0210	C321A2116201	• CLAMP,AFT (NP) 1001-1003, 1005-1390	1
450	F0210	C321A2119201	• HALF-BEARING,LOWER 1001-1003, 1005-1390	1
460	F0210	C321A2118201	• HALF-BEARING,UPPER 1001-1003, 1005-1390	1
465	F0210	C321A2510201	• BACKING BAND,REAR (WITH FLOATATION EMERGENCY- AFTER SB: 25-001REV1) 1001-1003, 1005-1390	2
470	F0111	22201BE080015L	• SCREW (ALTERNATE PART NUMBER: PNR=L22201-80-15BEL; MFR=F0111) 1001-1003, 1005-1390	2
480	F0111	23111AG080LE	• WASHER (ALTERNATE PART NUMBER: PNR=L23111-80AGL; MFR=F0111) 1001-1003, 1005-1390	2
490	97393	SL40568M8C	• NUT, PLAIN, BARREL 1001-1003, 1005-1390	2
500	B1103	SLR40568-M8	• SPRING,RETAINING 1001-1003, 1005-1390	2
510	F0210	350A41-1076-20	• LEAF (ALTERNATE PART NUMBER: PNR=350A41107620; MFR=F0210) 1001-1003, 1005-1390	2
520	F0111	22252BE120042L	• SCREW 1001-1003, 1005-1390	4
530	F0111	23111AG120LE	• WASHER, FLAT (ALTERNATE PART NUMBER: PNR=L23111-120AGL; MFR=F0111) 1001-1003, 1005-1390	4
540	F5442	ASN52320BH120N	• NUT (ALTERNATE PART NUMBER: PNR=12PH135M; MFR=F0224) 1001-1003, 1005-1390	4

THE DOCUMENT REFERENCE IS AVAILABLE ONLINE. PLEASE CHECK IF THE ONLINE DOCUMENTATION CORRESPONDS TO THE PRINTED VERSION

End of Document