



CT7-2E INCREMENTAL CHANGE

Release Notification Date: 02/15/2022

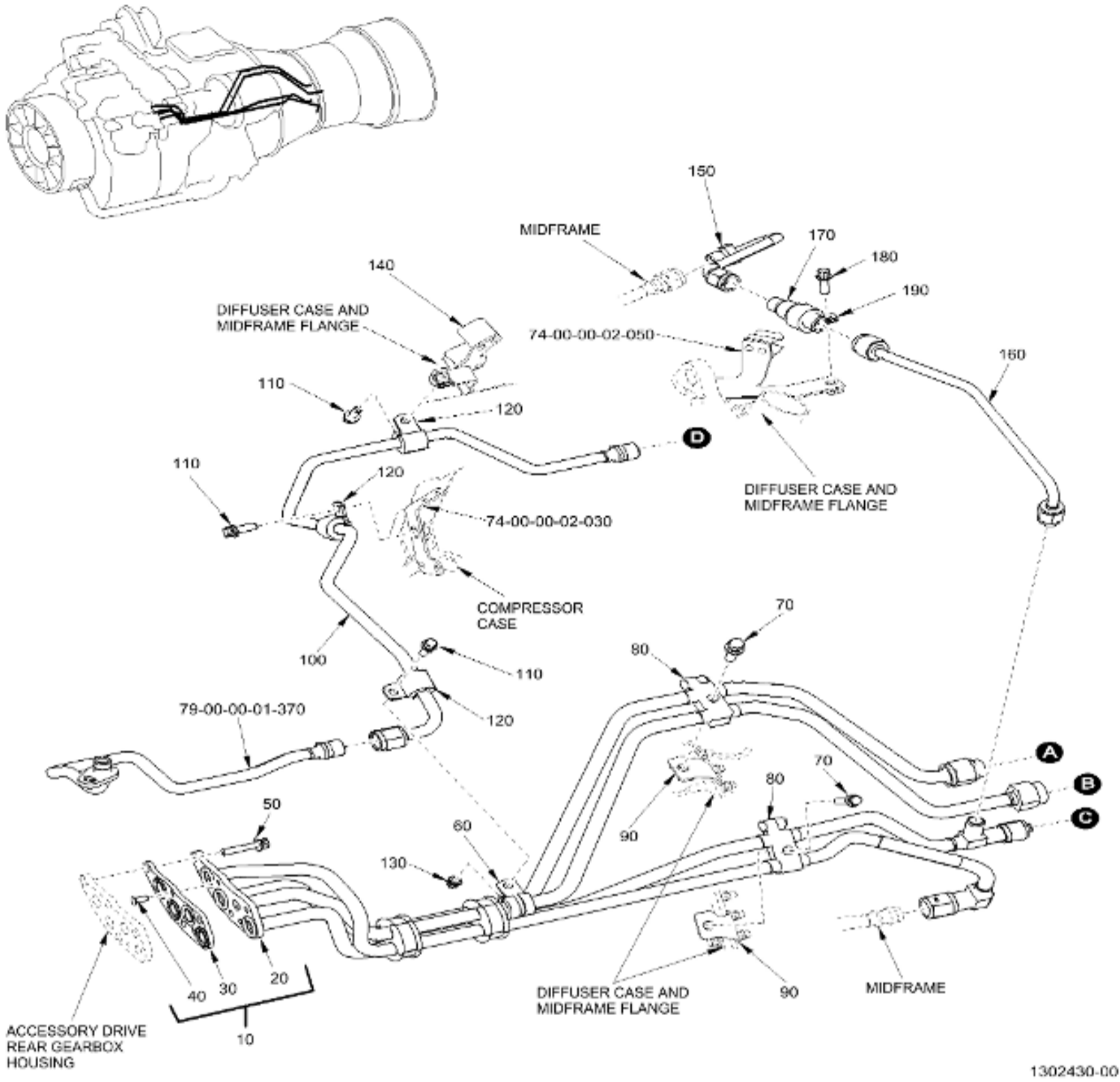
IPC 79-00-00 FIG. 02 OIL SYSTEM

**GE Designated: -CONFIDENTIAL-**

The information contained in this document is GE proprietary information and is disclosed in confidence. It is the property of GE and shall not be used, disclosed to others or reproduced without the express written consent of GE, including, but without limitation, it is not to be used in the creation, manufacture, development, or derivation of any repairs, modifications, spare parts, designs, or configuration changes or to obtain FAA or any other government or regulatory approval to do so. If consent is given for reproduction in whole or in part, this notice and the notice set forth on each page of this document shall appear in any such reproduction in whole or part.

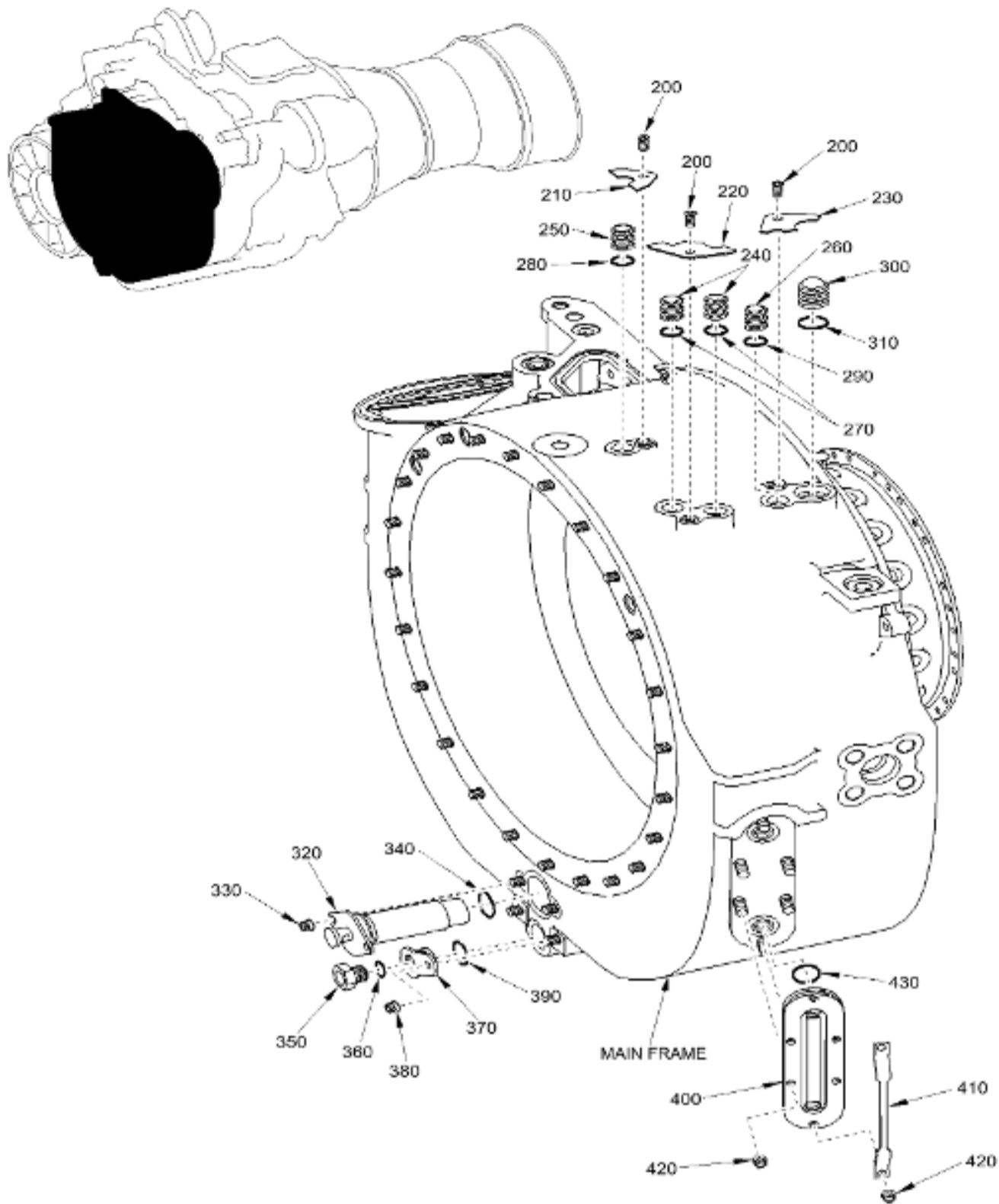
This technical data is considered subject to the Export Administration Regulations (EAR) pursuant to 15 CFR Parts 730-774. Transfer of this data by any means to a Non-U.S. Person, whether in the United States or abroad, without the proper U.S. Government authorization (e.g., License, exemption, NLR, etc.), is strictly prohibited.

Copyright (2022) General Electric Company, U.S.A.



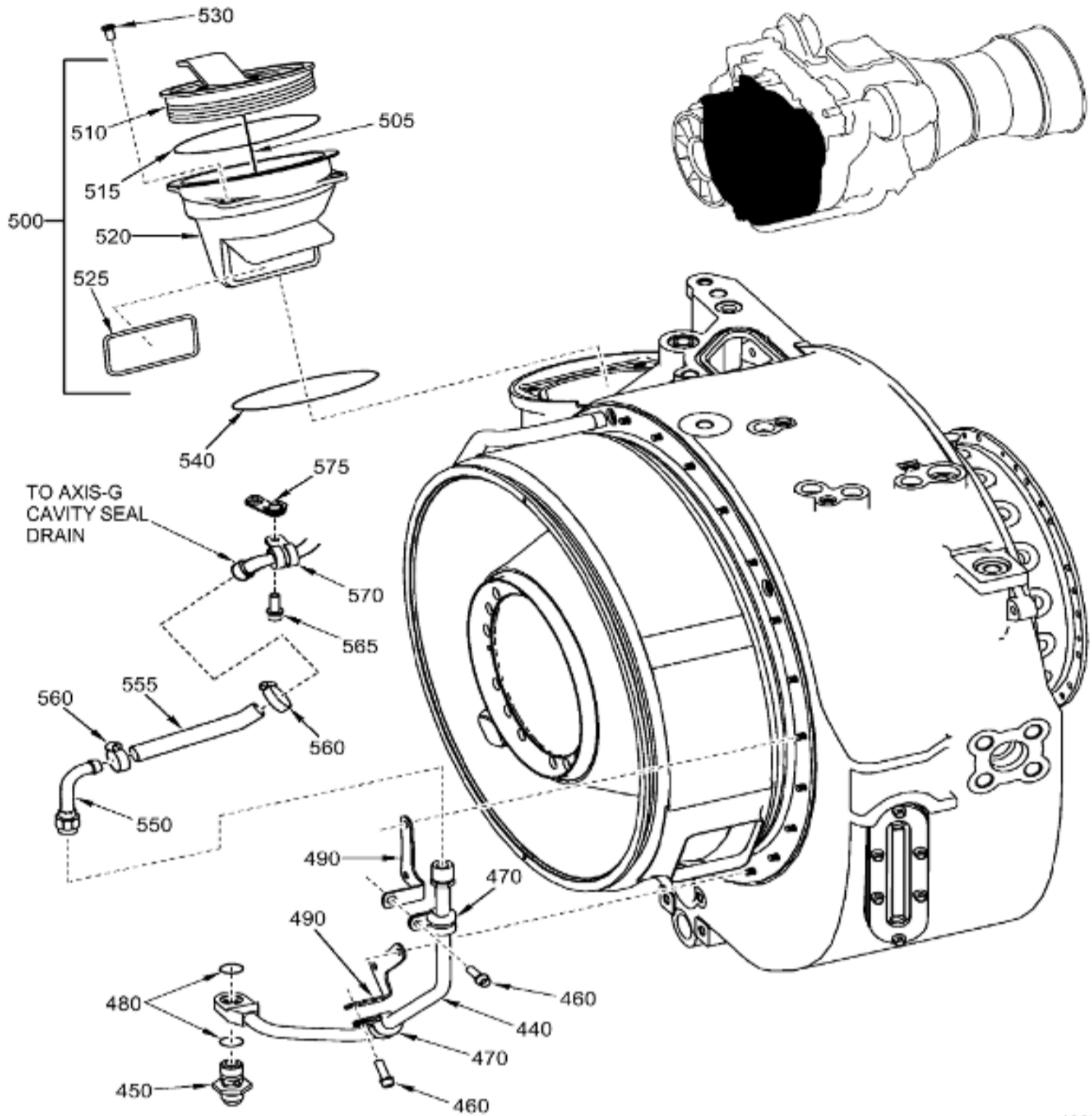
1302430-00

OIL SYSTEM  
 Figure 02 (Sheet 1)



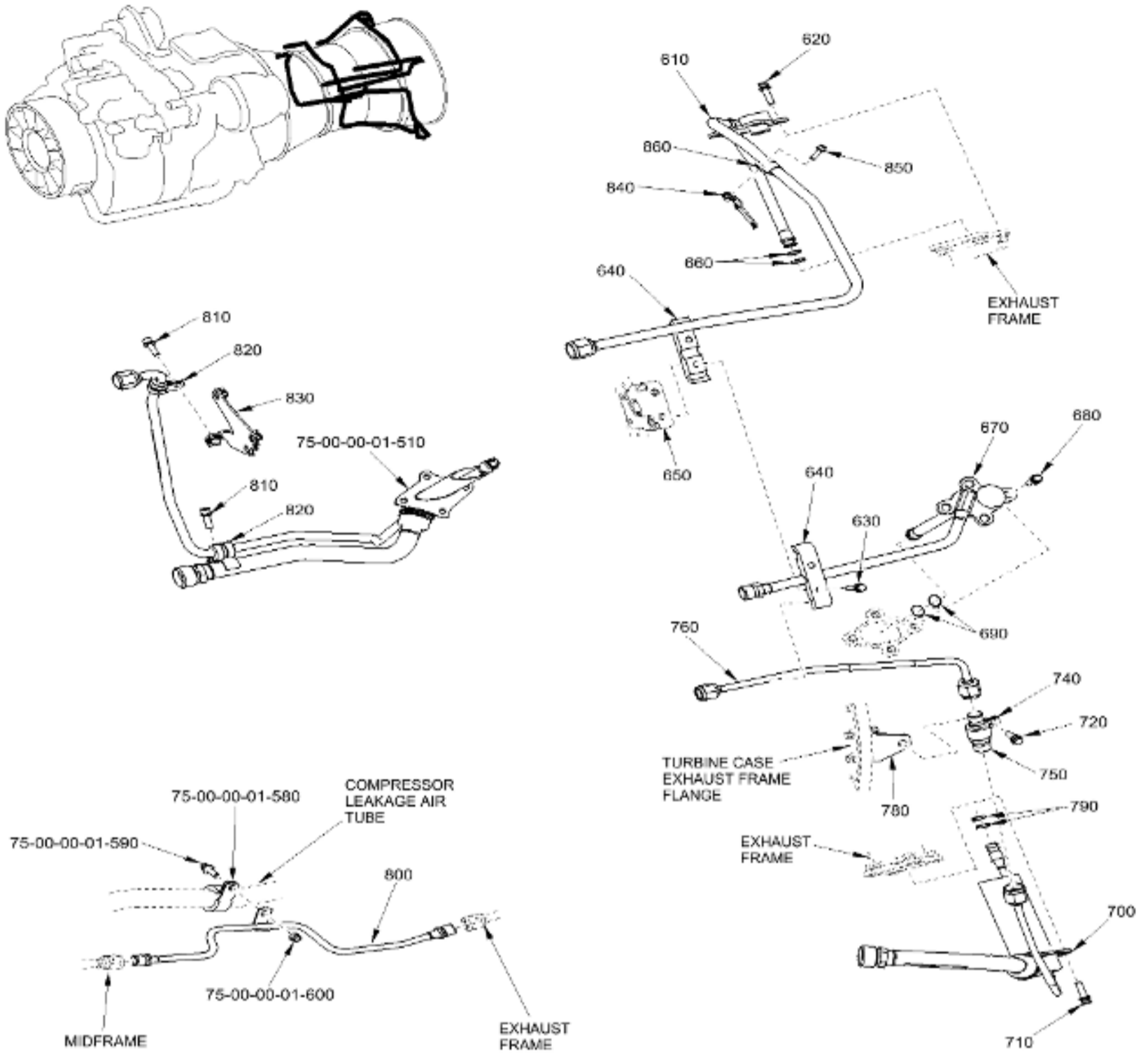
1302432-00

OIL SYSTEM  
Figure 02 (Sheet 2)



1302433-01

OIL SYSTEM  
Figure 02 (Sheet 3)



1302431-00

OIL SYSTEM  
Figure 02 (Sheet 4)

ITEM	PART NUMBER	NOMENCLATURE					USAGE CODE	UNITS PER ASSY
		1	2	3	4	5		
- 001	NO-NUMBER	OIL SYSTEM						RF
- 005	NHA	COLD SECTION MODULE SEE 72-30-00-01-001 FOR NHA						RF
010	5157T68G01	. LUBE MANIFOLD ASSEMBLY SIN 0LB00						1
020	5157T69G01	. . TUBE-LUBE MANIFOLD SIN 0LB00 2						1
030	4069T61G01	. . GASKET-MANIFOLD SIN 0LB00 3						1
040	R1471P003	. . SCREW-FLAT-HEAD MACHINE SIN 0LB00 4						2
050	MS9489-10	. BOLT-MACHINE SIN 0LB20						3
060	J1220G06	. CLAMP-CUSHIONED SIN 0LB82						1
070	J643P14A	. BOLT-MACHINE						2

		SIN 0LB21		
080	1153M64G29	. CLAMP-TUBE SIN 0LB81		2
090	5169T73G01	. BRACKET-LUBE MANIFOLD SUPPORT SIN 0LB10		2
100	5044T55G01	. TUBE-MID SCAVENGE SIN 0LB01		1
110	J643P06A	. BOLT-MACHINE SIN 0LB22		3
120	J1220G05	. CLAMP-CUSHIONED LOOP SIN 0LB80		3
130	4046T32P01	. NUT-LOCK SIN 0LB40		1
- 130A	4046T32P02	. NUT-LOCK SIN 0LB40		ALT
- 130B	4046T32P03	. NUT-LOCK SIN 0LB40		ALT
- 130C	4046T32P04	. NUT-LOCK SIN 0LB40		ALT
140	5169T71G01	. BRACKET-MULTIPLE T4.5 TORQUE & LUBE SIN 0LB12		1
150	4052T82G01	. TUBE-RIGHT OIL SUPPLY SIN 0L400		1
160	4052T83G01	. TUBE-LEFT OIL SUPPLY SIN 0L401		1
170	4052T93P01	. CHECK VALVE-B-SUMP SIN 0L402		1
180	J643P05A	. BOLT-MACHINE SIN 0L420		1
190	3033T86P01	. CLAMP-CUSHIONED SIN 0L480		1
- 190A	3033T86P02	. CLAMP-CUSHIONED SIN 0L480		ALT
200	R1473P005	. SCREW-MACHINE SIN 02120		3
210	3031T99P01	. PLATE-MAINFRAME TRANSFER SLEEVE LOCK SIN 02101		1
220	3032T01P01	. PLATE-MAINFRAME TRANSFER SLEEVE LOCK SIN 02103		1
230	3032T00P01	. PLATE-MAINFRAME TRANSFER SLEEVE LOCK SIN 02102		1
240	4088T76P01	. SLEEVE-OIL TRANSFER SIN 0L500		2
250	4088T76P01	. SLEEVE-OIL TRANSFER SIN 0L600		1
260	4088T76P01	. SLEEVE-OIL TRANSFER SIN 0L900		1
270	J221P013	. PACKING-PREFORMED SIN 0L550		2
280	J221P013	. PACKING-PREFORMED SIN 0L650		1
290	J221P013	. PACKING-PREFORMED SIN 0L950		1
300	4041T56G02	. SLEEVE-OIL TRANSFER SIN 0L700		1
310	J221P018	. PACKING-PREFORMED SIN 0L750		1
320	4052T78G01	. STRAINER-MAINFRAME OIL SIN 02104		1
330	4046T32P01	. NUT-LOCK SIN 02140		2
- 330A	4046T32P02	. NUT-LOCK SIN 02140		ALT
- 330B	4046T32P03	. NUT-LOCK SIN 02140		ALT
340	J221P914	. PACKING-PREFORMED SIN 02150		1
350	MS9404-05	. PLUG-MACHINE SIN 02106		1
360	J221P905	. PACKING-PREFORMED SIN 02156		1
370	4053T27P01	. INSERT-OIL DRAIN SIN 02107		1
380	4046T32P01	. NUT-LOCK		1

		SIN 02140		
- 380A	4046T32P02	. NUT-LOCK SIN 02140		ALT
- 380B	4046T32P03	. NUT-LOCK SIN 02140		ALT
- 380C	4046T32P04	. NUT-LOCK SIN 02140		ALT
390	J221P113	. PACKING-PREFORMED SIN 02157		1
400	4053T40P01	. INDICATOR-FLUID SIN 0LG00		2
410	4088T72P01	. GUARD-OIL INDICATOR SIN 0LG01		2
420	4046T32P01	. NUT-LOCK SIN 0LG40		12
- 420A	4046T32P02	. NUT-LOCK SIN 0LG40		ALT
- 420B	4046T32P03	. NUT-LOCK SIN 0LG40		ALT
- 420C	4046T32P04	. NUT-LOCK SIN 0LG40		ALT
430	J221P113	. PACKING-PREFORMED SIN 0LG50		4
440	5060T37G01	. TUBE-AXIS G LOWER DRAIN SIN 1LA01		1
450	4082T50P02	. DRAIN FITTING-AXIS G SIN 1LA00		1
460	J643P06A	. BOLT-MACHINE SIN 1LA20		2
470	J1220G06	. CLAMP-CUSHIONED SIN 1LA80		2
480	J221P906	. PACKING-PREFORMED SIN 1LA50		2
490	4082T51G01	. BRACKET-LOWER SUMP SIN 1LA10		2
500	6064T39P02	. CAP/ADAPTER-OIL TANK SIN 0LE00		1
505	416-1275	. . CABLE-ASSY (SPAD) POST SB 72-0027		AR
510	416-866	. . CAP ASSEMBLY		1
515	J221P232	. . PACKING-PREFORMED (SPAD) POST SB 72-0011		AR
520	416-1395	. . ADAPTER (SPAD) POST SB 72-0027		AR
525	J221P223	. . PACKING-PREFORMED (SPAD) POST SB 72-0011		AR
530	R1473P006	. SCREW-MACHINE SIN 0LE20		4
540	J221P153	. PACKING-PREFORMED SIN 0LE50		1
550	4082T89G01	. TUBE-AXIS G DRAIN SIN 1LA02		1
555	4082T90P01	. HOSE-OIL DRAIN SIN 1LA03		1
560	AA52506F06	. CLAMP-HOSE SIN 1LA81		2
- 560A	MS35842-10	. CLAMP-HOSE SIN 1LA81		ALT
565	J643P06A	. BOLT-MACHINE SIN 1LA20		1
570	J1220G06	. CLAMP-CUSHIONED SIN 1LA80		1
575	5066T26G01	. BRACKET-DRAIN TUBE SIN 29A11		1
- 600	NHA	POWER TURBINE MODULE SIN 90100 SEE 72-50-00-01-001 FOR NHA		RF
610	6033T78G02	. TUBE-FORWARD SCAVENGE SIN 9L100		1
620	J643P10A	. BOLT-MACHINE		1

		SIN 9L120		
630	J643P16A	. BOLT-MACHINE SIN 9L222		2
640	5166T01P01	. CLAMP-TUBE HALF SIN 9L280		2
650	5166T05G01	. BRACKET-LUBE MANIFOLD SIN 9L210		1
660	9169M40P110	. PACKING-PREFORMED SIN 9L151 REPL BY 4074T58P04		2
- 660A	4074T58P04	. PACKING-PREFORMED SIN 9L151 POST SB 72-0014 REPLS 9169M40P110		2
- 660B	J1400P011	. PACKING-PREFORMED SIN 9L151		ALT
670	5035T94G01	. TUBE-AFT SCAVENGE SIN 9L200		1
680	J643P10A	. BOLT-MACHINE SIN 9L220		1
690	9169M40P110	. PACKING-PREFORMED SIN 9L251 REPL BY 4074T58P04		2
- 690A	4074T58P04	. PACKING-PREFORMED SIN 9L251 POST SB 72-0014 REPLS 9169M40P110		2
- 690B	J1400P011	. PACKING-PREFORMED SIN 9L251		ALT
700	5160T89G01	. TUBE-REAR C-SUMP OIL SUPPLY SIN 9L000		1
710	J643P08A	. BOLT-MACHINE SIN 9L020		4
720	J643P06A	. BOLT-MACHINE SIN 9L021		1
740	J1220G08	. CLAMP-CUSHIONED LOOP SIN 9L080		1
750	5066T57P01	. CHECK VALVE SIN 9L002		1
- 750A	5066T57P02	. CHECK VALVE SIN 9L002		ALT
760	5157T75G01	. TUBE-FRONT C-SUMP OIL SUPPLY SIN 9L001		1
780	5152T21G01	. BRACKET-AFT SCAVENGE SIN 9L010		1
790	9169M40P110	. PACKING-PREFORMED SIN 9L051 REPL BY 4074T58P04		2
- 790A	4074T58P04	. PACKING-PREFORMED SIN 9L051 POST SB 72-0014 REPLS 9169M40P110		2
- 790B	J1400P011	. PACKING-PREFORMED SIN 9L051		ALT
800	4053T35G01	. TUBE-B-SUMP DRAIN SIN 9L300		1
810	J643P06A	. BOLT-MACHINE SIN 9A021		2
820	J1220G05	. CLAMP-CUSHIONED LOOP SIN 9A080		2
830	NO-NUMBER	. BRACKET-SUPPORT SIN 9E003 SEE 74-00-00-01-480		RF
840	4082T78G01	. BRACKET-TUBE SIN 9L110		1
850	J643P06A	. BOLT-MACHINE SIN 9L121		1
860	J1220G06	. CLAMP-CUSHIONED SIN 9L180		1

- ITEM NOT ILLUSTRATED



GE Designated: - CONFIDENTIAL Subject to the restrictions on the media