



CT7-2E INCREMENTAL CHANGE

Release Notification Date: 02/15/2022

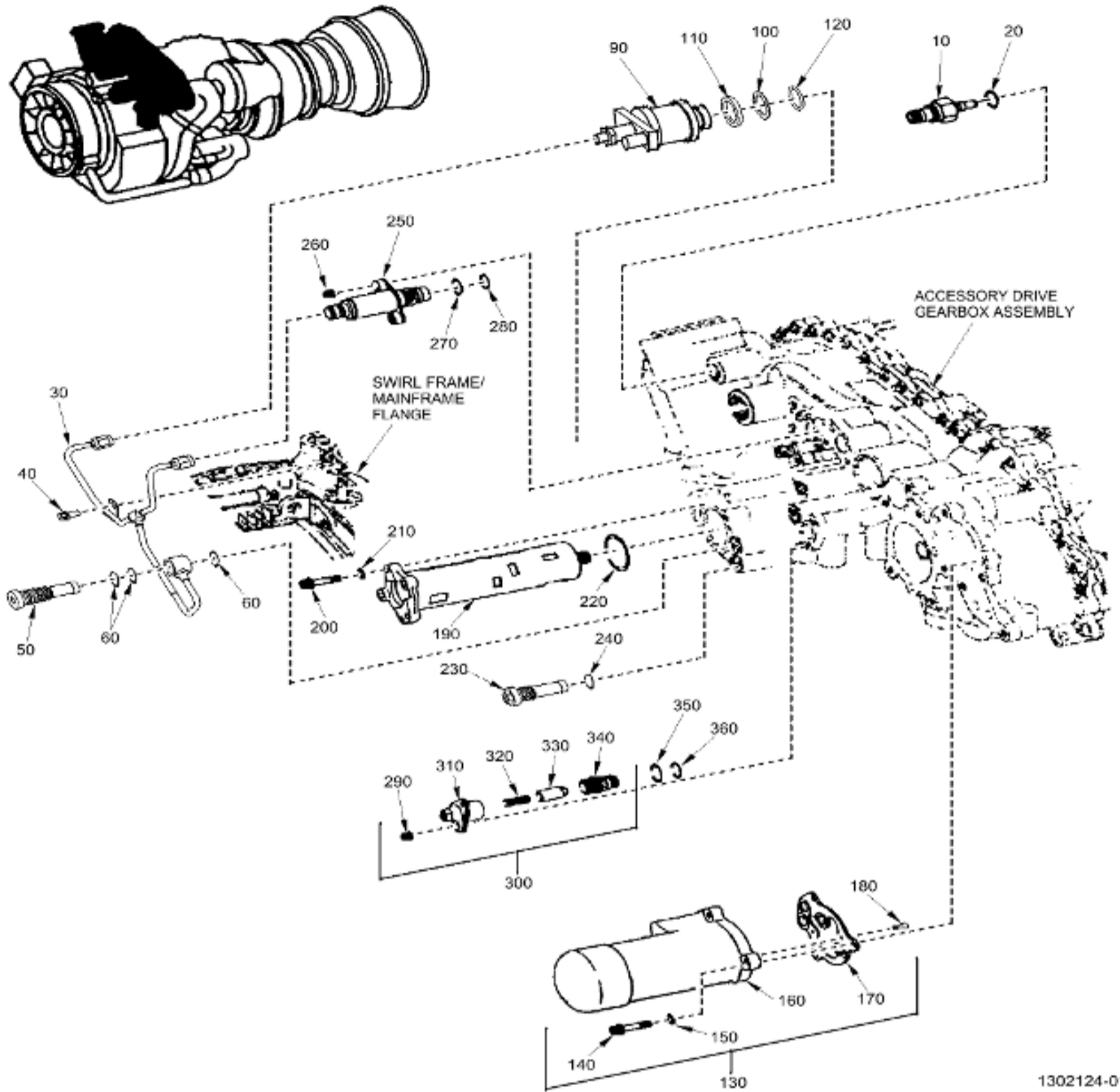
IPC 79-00-00 FIG. 01 OIL SYSTEM

**GE Designated: -CONFIDENTIAL-**

The information contained in this document is GE proprietary information and is disclosed in confidence. It is the property of GE and shall not be used, disclosed to others or reproduced without the express written consent of GE, including, but without limitation, it is not to be used in the creation, manufacture, development, or derivation of any repairs, modifications, spare parts, designs, or configuration changes or to obtain FAA or any other government or regulatory approval to do so. If consent is given for reproduction in whole or in part, this notice and the notice set forth on each page of this document shall appear in any such reproduction in whole or part.

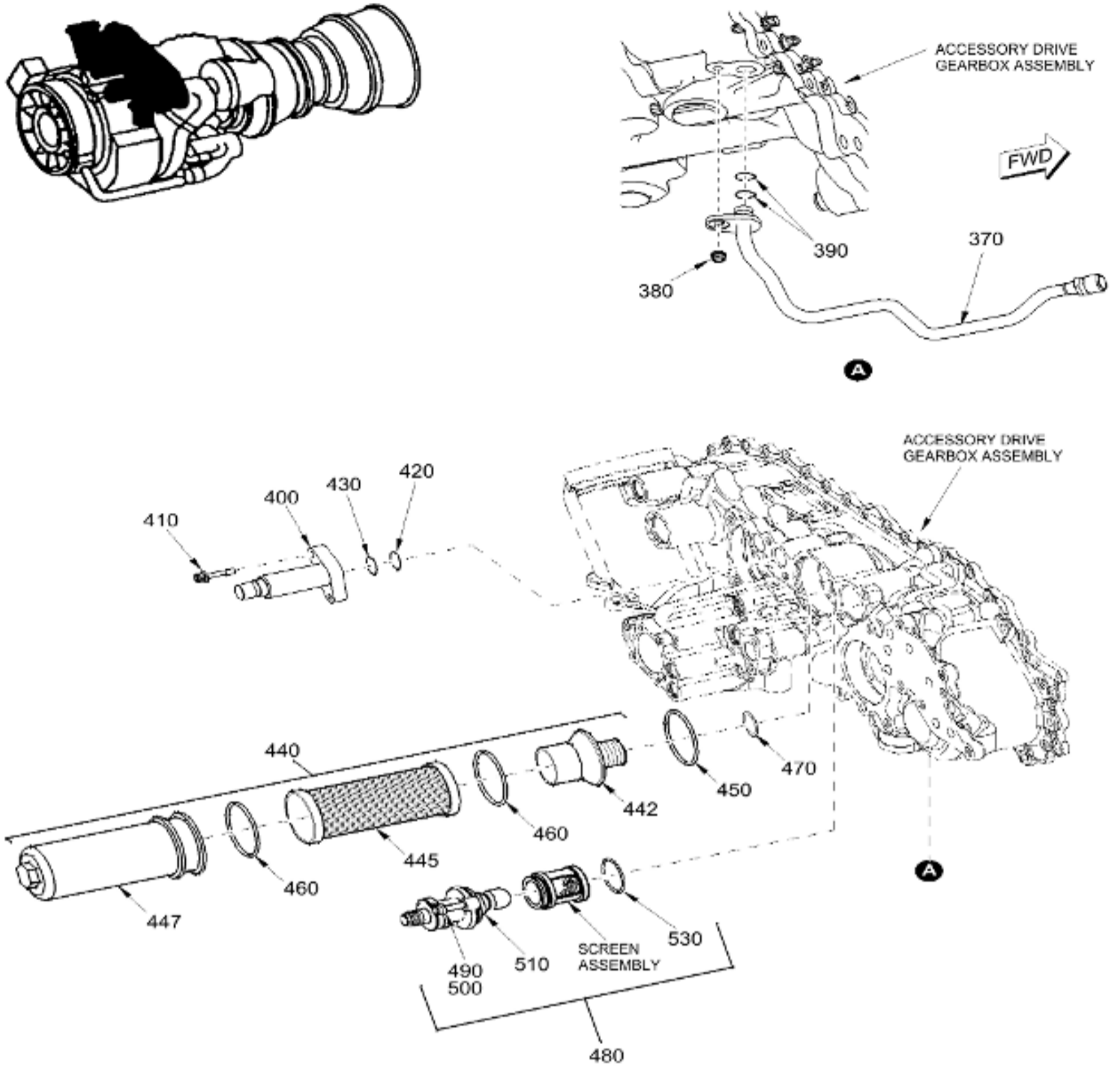
This technical data is considered subject to the Export Administration Regulations (EAR) pursuant to 15 CFR Parts 730-774. Transfer of this data by any means to a Non-U.S. Person, whether in the United States or abroad, without the proper U.S. Government authorization (e.g., License, exemption, NLR, etc.), is strictly prohibited.

Copyright (2022) General Electric Company, U.S.A.



OIL SYSTEM  
Figure 01 (Sheet 1)

1302124-01



1302128-01

OIL SYSTEM  
Figure 01 (Sheet 2)

ITEM	PART NUMBER	NOMENCLATURE	USAGE CODE	UNITS PER ASSY
-001	NO-NUMBER	OIL SYSTEM		RF
-005	NHA	ENGINE ASSEMBLY-AIRCRAFT SIN 00100 SEE 72-00-00-01-001 FOR NHA		RF
010	4053T73P01	. DETECTOR-OIL SIN 29A08		1
020	J221P904	. PACKING-PREFORMED SIN 29A52		1
030	5161T61G01	. TUBE-B-SUMP DELTA PRESSURE SIN 29A0B		1
040	J643P04A	. BOLT-MACHINE SIN 29A22		1
050	4068T53G01	. SCREEN-SCAVENGE SIN 29A0C		1
060	J221P906	. PACKING-PREFORMED SIN 29A56		3

090	3049T27P02	. TRANSMITTER-OIL PRESSURE SIN 29A0A		1
100	327B486P012	. WASHER-BACKUP SIN 29A31		1
110	4069T03P01	. SPACER-TRANSMITTER SIN 29A70 0.130-0.135 IN. THK		1
-110A	4069T03P02	. SPACER-TRANSMITTER SIN 29A70 0.165-0.170 IN. THK		AR
120	J221P912	. PACKING-PREFORMED SIN 29A54		1
-125	NHA	ACCESSORY MODULE SIN 29900 SEE 72-60-00-01 FOR NHA		RF
130	4046T25G03	. ASSEMBLY-OIL COOLER SIN 40700	a	1
-130A	4046T25G06	. ASSEMBLY-OIL COOLER SIN 40700	b	ALT
140	3032T53P01	. . BOLT-CAPTIVE SIN 40700 4		3
150	AN960C416L	. . WASHER-FLAT SIN 40700 3		3
160	6044T95P02	. . COOLER-LUBE OIL SIN 40700 2	a	1
-160A	6044T95P01	. . COOLER-LUBE OIL SIN 40700 2	a	ALT
-160B	5034T31P02	. . COOLER-LUBE OIL SIN 40700 2	b	1
170	4041T49P02	. . SEAL-LUBE OIL COOLER SIN 40700 5		1
180	R1471P003	. . SCREW-FLAT-HEAD MACHINE SIN 40700 6		2
190	3065T25P01	. PUMP-LUBE AND SCAVENGE SIN 40400		1
200	J643P10A	. BOLT-MACHINE SIN 40420		3
210	AN960C10L	. WASHER-FLAT SIN 40430		3
220	J221P952	. PACKING-PREFORMED SIN 40450		1
230	4045T61G01	. SCREEN-SCAVENGE SIN 43B00		5
240	J221P906	. PACKING-PREFORMED SIN 43B50		5
250	3049T39P01	. SENSOR-LOW OIL INDICATOR SIN 42400		1
260	4046T32P01	. NUT-LOCK SIN 42440		2
-260A	4046T32P02	. NUT-LOCK SIN 42440		ALT
-260B	4046T32P03	. NUT-LOCK SIN 42440		ALT
-260C	4046T32P04	. NUT-LOCK SIN 42440		ALT
270	J221P016	. PACKING-PREFORMED SIN 42450		1
280	J221P013	. PACKING-PREFORMED SIN 42451		1
290	4046T32P01	. NUT-LOCK SIN 42340		2
-290A	4046T32P02	. NUT-LOCK SIN 42340		ALT
-290B	4046T32P03	. NUT-LOCK SIN 42340		ALT
-290C	4046T32P04	. NUT-LOCK SIN 42340		ALT
300	4041T33G01	. VALVE-OIL COOLER BYPASS RELIEF SIN 42300		1
310	4041T32P01	. . HOUSING-VALVE SIN 42300 3		1
320	3031T79P01	. . SPRING-HELICAL SIN 42300 5		1
330	3031T64P01	. . PISTON-VALVE		1

		SIN 42300 4		
340	4040T76P01	. . SEAT-VALVE SIN 42300 2		1
350	J221P016	. PACKING-PREFORMED SIN 42350		1
360	J221P013	. PACKING-PREFORMED SIN 42351		1
370	5044T54G01	. TUBE-OIL SCAVENGE SIN 29A07		1
380	3022T66P04	. NUT-LOCK SIN 29A42		1
390	J221P011	. PACKING-PREFORMED SIN 29A51		2
400	3066T62P01	. SWITCH-OIL FILTER SIN 42B00		1
410	3032T44P02	. BOLT-MACHINE SIN 42B20		2
420	J221P015	. PACKING-PREFORMED SIN 42B51		1
430	J221P016	. PACKING-PREFORMED SIN 42B50		1
440	5066T30P01	. FILTER-LUBE SIN 41800		1
442	AB-9718BEP-25D3	. . VALVE ASSY-RELIEF (SPAD) POST SB 72-0027		AR
445	AC-9718F-25	. . FILTER-ELEMENT (SPAD) POST SB 72-0027		AR
-445A	AA-9718E-25KF1	. . KIT-OIL FILTER NOTE 1		AR
447	AA-9718BE-28D2A	. . BOWL-FILTER (SPAD) POST SB 72-0027		AR
450	J221P139	. PACKING-PREFORMED SIN 41852		1
460	J221P022	. PACKING-PREFORMED SIN 41850		2
470	J221P908	. PACKING-PREFORMED SIN 41851		1
480	3033T30G04	. ASSEMBLY-CHIP DETECTOR SIN 68400	a	1
-480A	3033T30G03	. ASSEMBLY-CHIP DETECTOR SIN 68400	b	ALT
490	3032T53P01	. . BOLT-CAPTIVE SIN 68400 4		2
500	AN960C416L	. . WASHER-FLAT SIN 68400 3		2
510	5157T10P01	. . CHIP DETECTOR SIN 68400 1	a	1
-510A	3066T65P02	. . CHIP DETECTOR SIN 68400 2	b	1
530	J221P026	. . PACKING-PREFORMED SIN 68400 5		1
		NOTE 1: WHEN REPLACING FILTER ELEMENT PN AC-9718F-25 BE SURE TO REPLACE PREFORMED PACKINGS. OIL FILTER KIT PN AA-9718E-25KF1 CONTAINS ELEMENT AND BOTH PACKINGS. PN M83248/1-022 OR PN AS3209-022 ARE ACCEPTABLE ALTERNATE PACKINGS FOR PN J221P022.		

- ITEM NOT ILLUSTRATED

GE Designated: - CONFIDENTIAL Subject to the restrictions on the media