



CT7-2E INCREMENTAL CHANGE

Release Notification Date: 02/15/2022

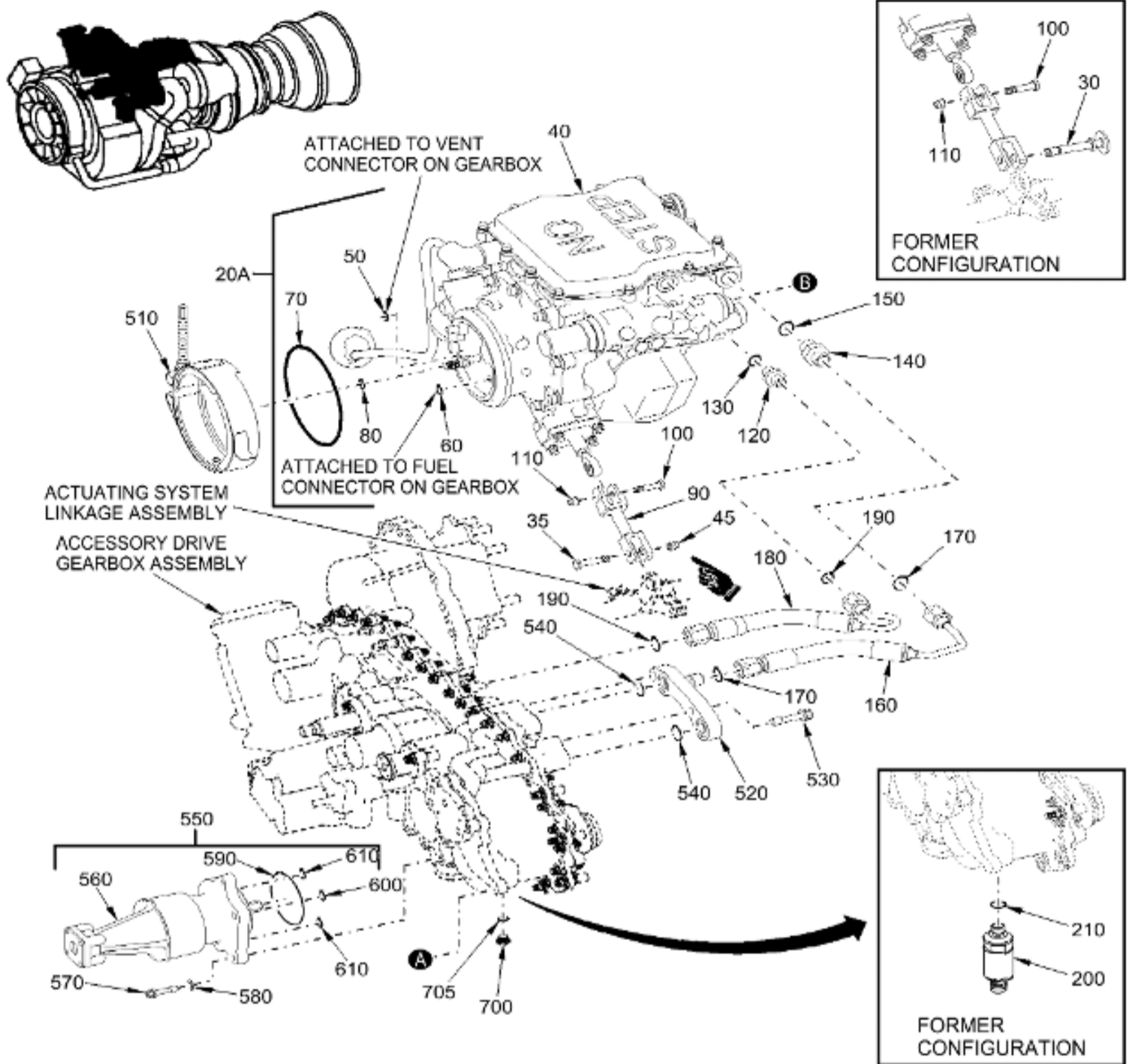
IPC 73-00-00 FIG. 01 FUEL SYSTEM

**GE Designated: -CONFIDENTIAL-**

The information contained in this document is GE proprietary information and is disclosed in confidence. It is the property of GE and shall not be used, disclosed to others or reproduced without the express written consent of GE, including, but without limitation, it is not to be used in the creation, manufacture, development, or derivation of any repairs, modifications, spare parts, designs, or configuration changes or to obtain FAA or any other government or regulatory approval to do so. If consent is given for reproduction in whole or in part, this notice and the notice set forth on each page of this document shall appear in any such reproduction in whole or part.

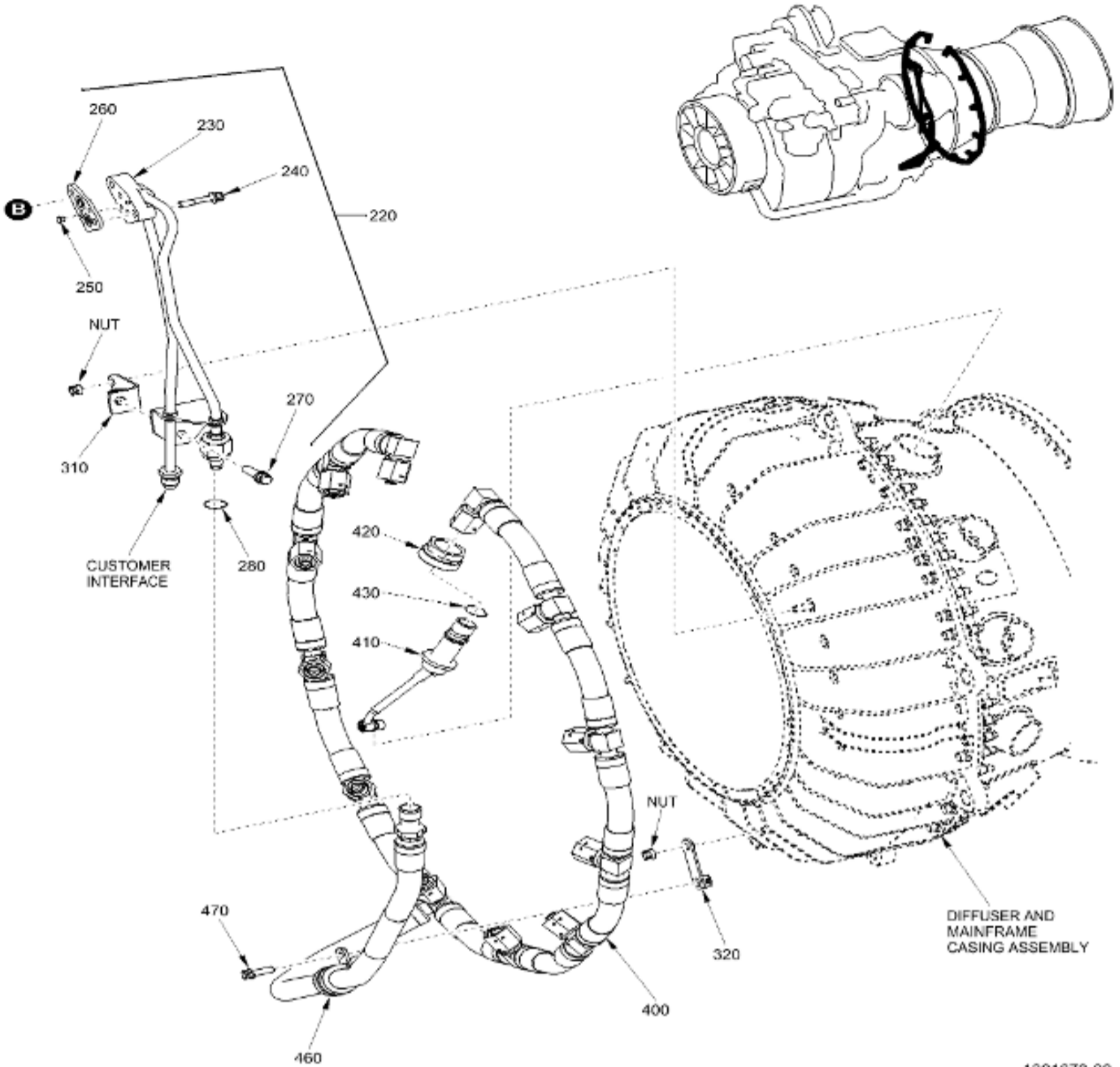
This technical data is considered subject to the Export Administration Regulations (EAR) pursuant to 15 CFR Parts 730-774. Transfer of this data by any means to a Non-U.S. Person, whether in the United States or abroad, without the proper U.S. Government authorization (e.g., License, exemption, NLR, etc.), is strictly prohibited.

Copyright (2022) General Electric Company, U.S.A.



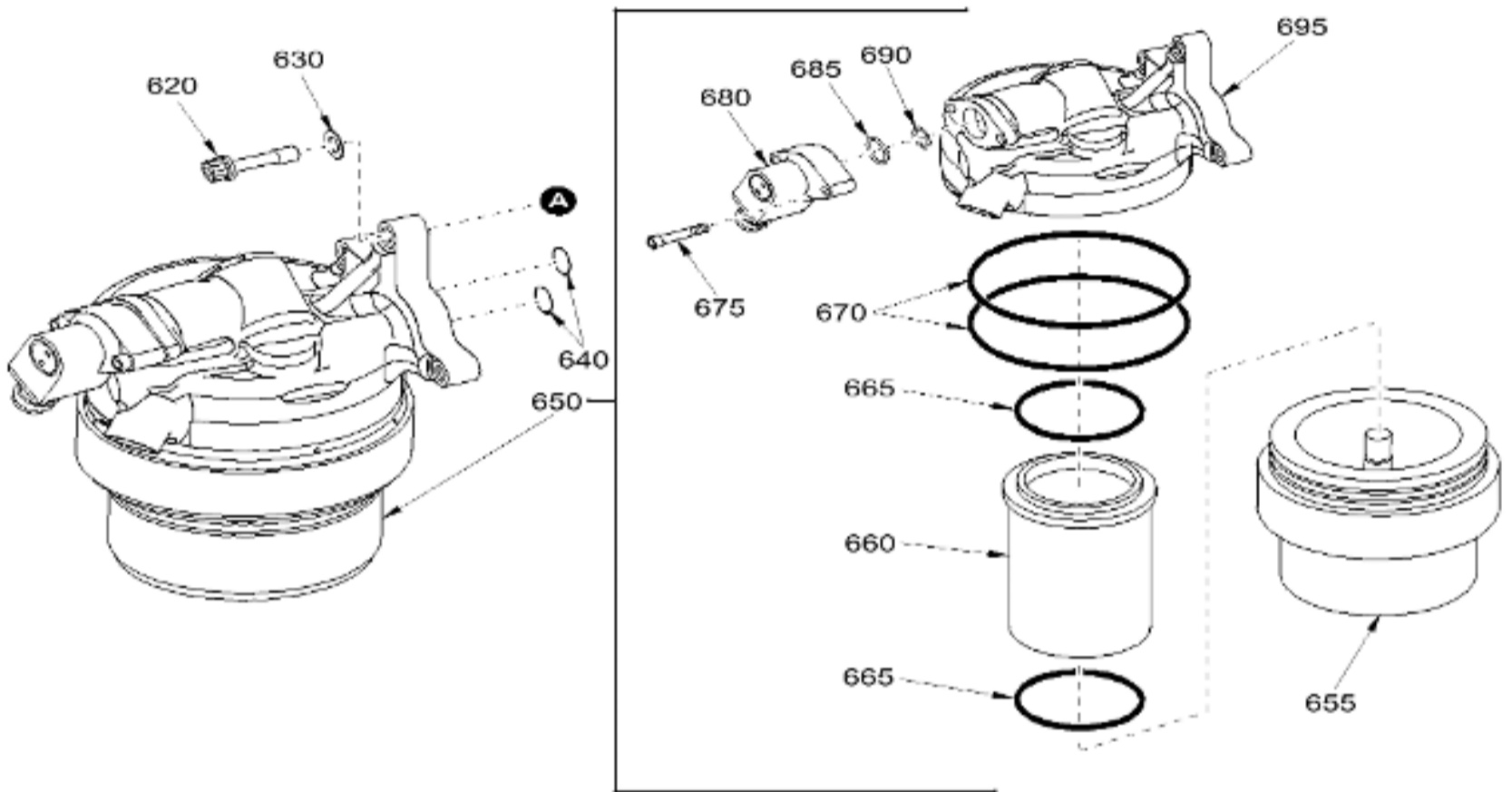
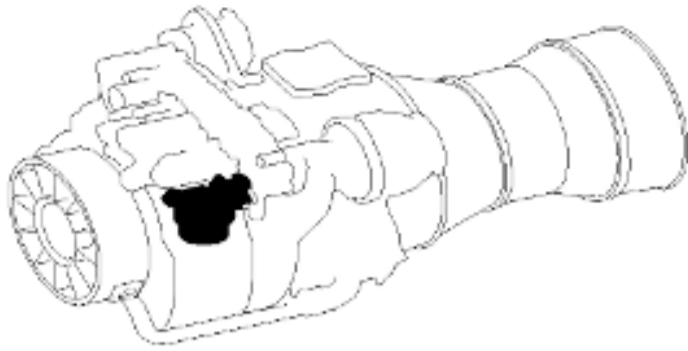
1301655-03

FUEL SYSTEM  
 Figure 01 (Sheet 1)



FUEL SYSTEM  
Figure 01 (Sheet 2)

1301673-00



5008899-00

FUEL SYSTEM  
Figure 01 (Sheet 3)

| ITEM  | PART NUMBER | NOMENCLATURE  | USAGE CODE | UNITS PER ASSY |
|-------|-------------|---|------------|----------------|
| - 001 | NO-NUMBER   | FUEL SYSTEM   |            | RF             |
| - 005 | NHA         | ENGINE ASSY-AIRCRAFT<br>SEE 72-00-00-01 FOR NHA                   |            | RF             |
| - 020 | 5165T63G02  | . UNIT ASSEMBLY-FMU CONTROL<br>SIN 30H00<br>RWK TO 5165T63G03     |            | 1              |
| 020A  | 5165T63G03  | . UNIT ASSEMBLY-FMU CONTROL<br>SIN 30H00<br>POST SB 72-0008       |            | 1              |
| 030   | 4078T20G01  | . . PIN ASSY-QUICK-DISCONNECT<br>SIN 30H00 8<br>DEL BY SB 72-0008 |            | DEL            |
| 035   | 4048T91P01  | . . BOLT-HEXAGONAL HEAD SHEAR<br>SIN 30H00 15<br>POST SB 72-0008  |            | 1              |
| 040   | 5158T31P02  | . . UNIT-FUEL METERING<br>SIN 30H00 2                             |            | 1              |

|        |            |  |  |     |
|--------|------------|--|--|-----|
| 045    | 4046T32P01 | . . NUT-SELF-LOCKING<br>SIN 30H00 16<br>POST SB 72-0008  |  | 1   |
| - 045A | 4046T32P02 | . . NUT-SELF-LOCKING<br>SIN 30H00 16<br>POST SB 72-0008  |  | ALT |
| - 045B | 4046T32P03 | . . NUT-SELF-LOCKING<br>SIN 30H00 16<br>POST SB 72-0008  |  | ALT |
| - 045C | 4046T32P04 | . . NUT-SELF-LOCKING<br>SIN 30H00 16<br>POST SB 72-0008  |  | ALT |
| 050    | J228P011   | . . PACKING-PREFORMED<br>SIN 30H00 11                    |  | 1   |
| 060    | J228P013   | . . PACKING-PREFORMED<br>SIN 30H00 13                    |  | 1   |
| 070    | J228P041   | . . PACKING-PREFORMED<br>SIN 30H00 12                    |  | 1   |
| 080    | J221P012   | . . PACKING-PREFORMED<br>SIN 30H00 14                    |  | 1   |
| 090    | 4053T11G01 | . . LINK ASSEMBLY<br>SIN 30H00 7                         |  | 1   |
| 100    | J713P029A  | . . BOLT-SHEAR<br>SIN 30H00 5                            |  | 1   |
| 110    | 4046T32P01 | . . NUT-SELF-LOCKING<br>SIN 30H00 6                      |  | 1   |
| - 110A | 4046T32P02 | . . NUT-SELF-LOCKING<br>SIN 30H00 6                      |  | ALT |
| - 110B | 4046T32P03 | . . NUT-SELF-LOCKING<br>SIN 30H00 6                      |  | ALT |
| - 110C | 4046T32P04 | . . NUT-SELF-LOCKING<br>SIN 30H00 6                      |  | ALT |
| 120    | 5157T80P01 | . . INSERT<br>SIN 30H00 3                                |  | 1   |
| 130    | J228P012   | . . PACKING-PREFORMED<br>SIN 30H00 9                     |  | 1   |
| 140    | 5157T81P01 | . . INSERT<br>SIN 30H00 4                                |  | 1   |
| 150    | J228P905   | . . PACKING-PREFMD<br>SIN 30H00 10                       |  | 1   |
| 160    | 5157T66P01 | . HOSE ASSY-AGB TO FMU<br>SIN 34000                      |  | 1   |
| 170    | J221P009   | . PACKING-PREFORMED<br>SIN 34053                         |  | 2   |
| 180    | 5157T67P01 | . HOSE ASSY-FMU TO AGB<br>SIN 34001                      |  | 1   |
| 190    | J221P009   | . PACKING-PREFORMED<br>SIN 34054                         |  | 2   |
| 200    | 3066T64P01 | . SWITCH-FUEL PRESSURE<br>SIN 29A09<br>DEL BY SB 72-0013 |  | DEL |
| 210    | J228P904   | . PACKING-PREFORMED<br>SIN 29A53<br>DEL BY SB 72-0013    |  | DEL |
| 220    | 5157T63G01 | . MANIFOLD ASSEMBLY-FMU<br>SIN 34100                     |  | 1   |
| 230    | 5157T82G01 | . . MANIFOLD<br>SIN 34100 2                              |  | 1   |
| 240    | 3032T44P09 | . . BOLT-MACHINE<br>SIN 34100 4                          |  | 2   |
| 250    | MS24693-C1 | . . SCREW-MACHINE<br>SIN 34100 5                         |  | 1   |
| 260    | 4069T01G01 | . . GASKET-ADAPTER<br>SIN 34100 3                        |  | 1   |
| 270    | J643P06A   | . BOLT-MACHINE<br>SIN 34121                              |  | 1   |
| 280    | J221P009   | . PACKING-PREFORMED<br>SIN 34155                         |  | 1   |
| - 300  | NHA        | COLD SECTION MODULE<br>SEE 72-30-00-01 FOR NHA           |  | RF  |
| 310    | 5165T35G01 | . BRACKET-FMU MANIFOLD SUPPORT<br>SIN 0F310              |  | 1   |
| 320    | 4053T66G01 | . BRACKET AND NUT<br>SIN 0F311                           |  | 1   |

|        |                 |  |     |
|--------|-----------------|--|-----|
| 400    | 5160T81P01      | . MANIFOLD-MAIN FUEL<br>SIN 0F300                            | 1   |
| - 402  | 4924T31P02      | . . B-NUT<br>(SPAD)<br>POST SB 72-0011                       | AR  |
| - 404  | J1325P06        | . . WIRE-SWIVEL CONNECTOR<br>(SPAD)<br>POST SB 72-0011       | AR  |
| 410    | 4045T30G16      | . INJECTION ASSEMBLY-FUEL<br>SIN 0F200<br>REPL BY 4045T30G17 | 12  |
| - 410A | 4045T30G17      | . INJECTION ASSEMBLY-FUEL<br>SIN 0F200<br>POST SB 73-0001    | 12  |
| - 410B | 4045T30G15      | . INJECTION ASSEMBLY-FUEL<br>SIN 0F200<br>POST SB 73-0002    | ALT |
| - 415  | 4076T98G01      | . . FILTER-FUEL  | AR  |
| - 416  | MS16625-4025    | . . RING-RETAINING   | AR  |
| 420    | 3049T66P01      | . NUT-RETAINING<br>SIN 0F240                                 | 12  |
| 430    | J221P009        | . PACKING-PREFORMED<br>SIN 0F35A                             | 12  |
| 460    | J1220G10        | . CLAMP-CUSHIONED<br>SIN 0F380                               | 1   |
| 470    | J643P04A        | . BOLT-MACHINE<br>SIN 0F320                                  | 1   |
| - 500  | NHA             | ACCESSORY MODULE<br>SEE 72-60-00-01 FOR NHA                  | RF  |
| 510    | 5043T51P03      | . CLAMP-V-BAND<br>SIN 30H80                                  | 1   |
| - 510A | 5043T51P04      | . CLAMP-V-BAND<br>SIN 30H80                                  | ALT |
| 520    | 5157T65P01      | . ADAPTER PLATE<br>SIN 32200                                 | 1   |
| 530    | 3032T53P01      | . BOLT-CAPTIVE<br>SIN 32220                                  | 2   |
| 540    | J228P112        | . PACKING-PREFMD<br>SIN 32250                                | 2   |
| 550    | 3033T33G02      | . PUMP ASSY-FUEL BOOST<br>SIN 31200                          | 1   |
| 560    | 5034T91P06      | . . PUMP-FUEL-BOOST<br>SIN 31200 2                           | 1   |
| 570    | 3032T53P01      | . . BOLT-CAPTIVE<br>SIN 31200 3                              | 3   |
| 580    | AN960C416L      | . . WASHER-FLAT<br>SIN 31200 4                               | 3   |
| 590    | J221P140        | . . PACKING-PREFORMED<br>SIN 31200 6                         | 1   |
| 600    | J228P113        | . . PACKING-PREFORMED<br>SIN 31200 5                         | 1   |
| 610    | J221P110        | . . PACKING-PREFORMED<br>SIN 31200 7                         | 2   |
| 620    | 3032T53P01      | . BOLT-CAPTIVE<br>SIN 31320                                  | 3   |
| 630    | AN960C416L      | . WASHER-FLAT<br>SIN 31330                                   | 3   |
| 640    | J228P113        | . PACKING-PREFORMED<br>SIN 31350                             | 2   |
| 650    | 5157T79P02      | . FILTER-FUEL<br>SIN 31300                                   | 1   |
| 655    | AB-9985-93Y3D2A | . . BOWL ASSY<br>(SPAD)<br>POST SB 72-0027                   | AR  |
| 660    | AC-9985F-30Y2   | . . ELEMENT-FILTER<br>(SPAD)<br>POST SB 72-0027              | AR  |
| 665    | J228P226        | . . PACKING-PREFORMED  | 2   |
| 670    | J228P238        | . . PACKING-PREFORMED<br>(SPAD)<br>REF SB 72-0027            | AR  |
| 675    | NAS1352C08LE12  | . . . SCREW-SOCKET HEAD CAP<br>(SPAD)<br>POST SB 72-0027     | AR  |

|     |                 |   |  |    |
|-----|-----------------|---|--|----|
| 680 | TD028VF0H7Y8    | . . SWITCH-DIFFERENTIAL PRESSURE<br>(SPAD)<br>POST SB 72-0027 |  | AR |
| 685 | J228P908        | . . PACKING-PREFORMED<br>(SPAD)<br>POST SB 72-0027            |  | AR |
| 690 | J228P014        | . . PACKING-PREFORMED<br>(SPAD)<br>POST SB 72-0027            |  | AR |
| 695 | AA-9985-93Y9D1A | . . HEAD-FILTER<br>(SPAD)<br>POST SB 72-0027                  |  | AR |
| 700 | AN814-4DL       | PLUG & BLEEDER<br>SIN 29A00 67                                |  | RF |
| 705 | J221P904        | PACKING-PREFORMED<br>SIN 29A00 30                             |  | RF |

- ITEM NOT ILLUSTRATED

GE Designated: - CONFIDENTIAL Subject to the restrictions on the media