



CT7-2E INCREMENTAL CHANGE

Release Notification Date: 02/15/2022

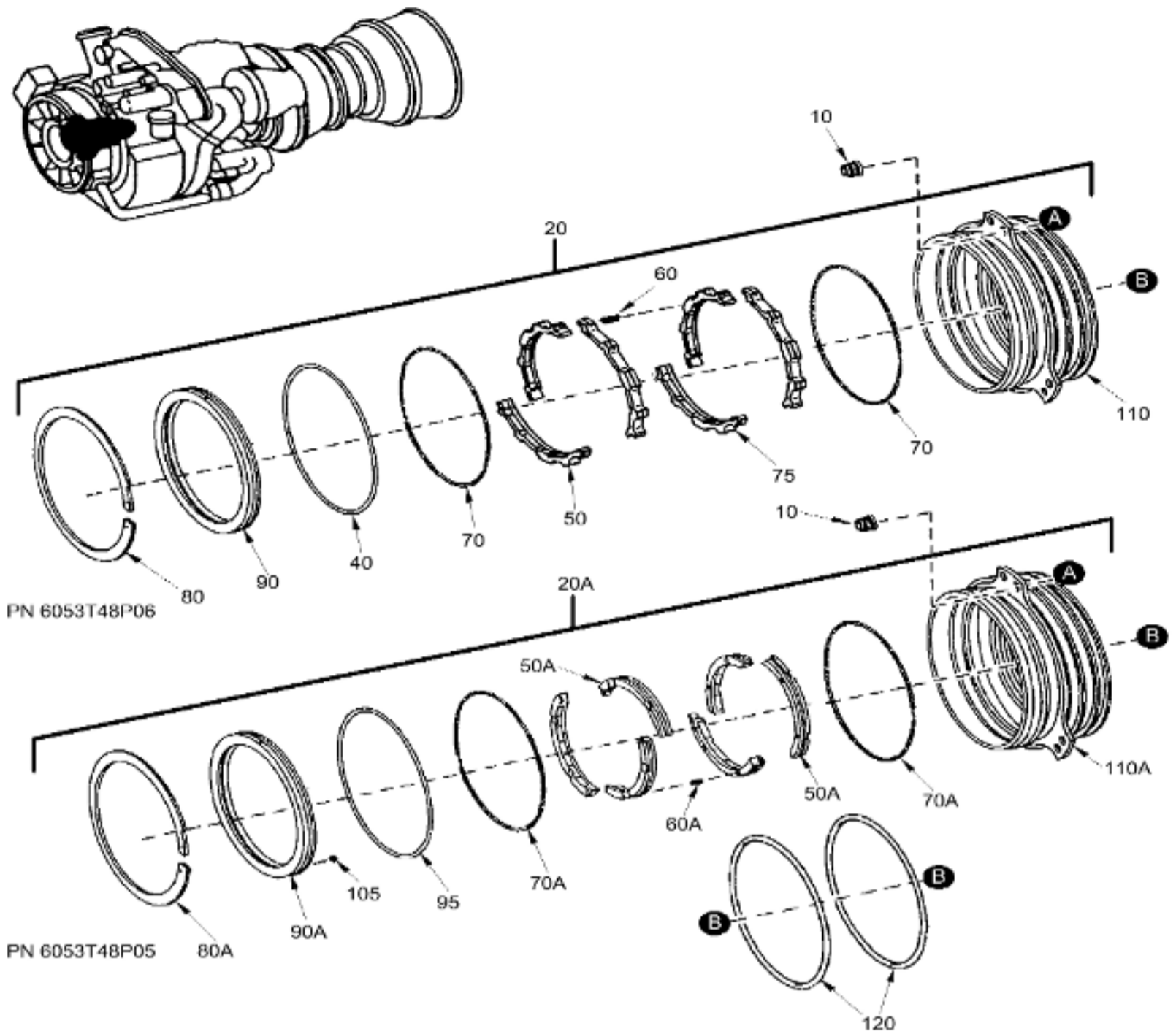
IPC 72-31-00 FIG. 01 A-SUMP OUTPUT SHAFT ASSEMBLY

**GE Designated: -CONFIDENTIAL-**

The information contained in this document is GE proprietary information and is disclosed in confidence. It is the property of GE and shall not be used, disclosed to others or reproduced without the express written consent of GE, including, but without limitation, it is not to be used in the creation, manufacture, development, or derivation of any repairs, modifications, spare parts, designs, or configuration changes or to obtain FAA or any other government or regulatory approval to do so. If consent is given for reproduction in whole or in part, this notice and the notice set forth on each page of this document shall appear in any such reproduction in whole or part.

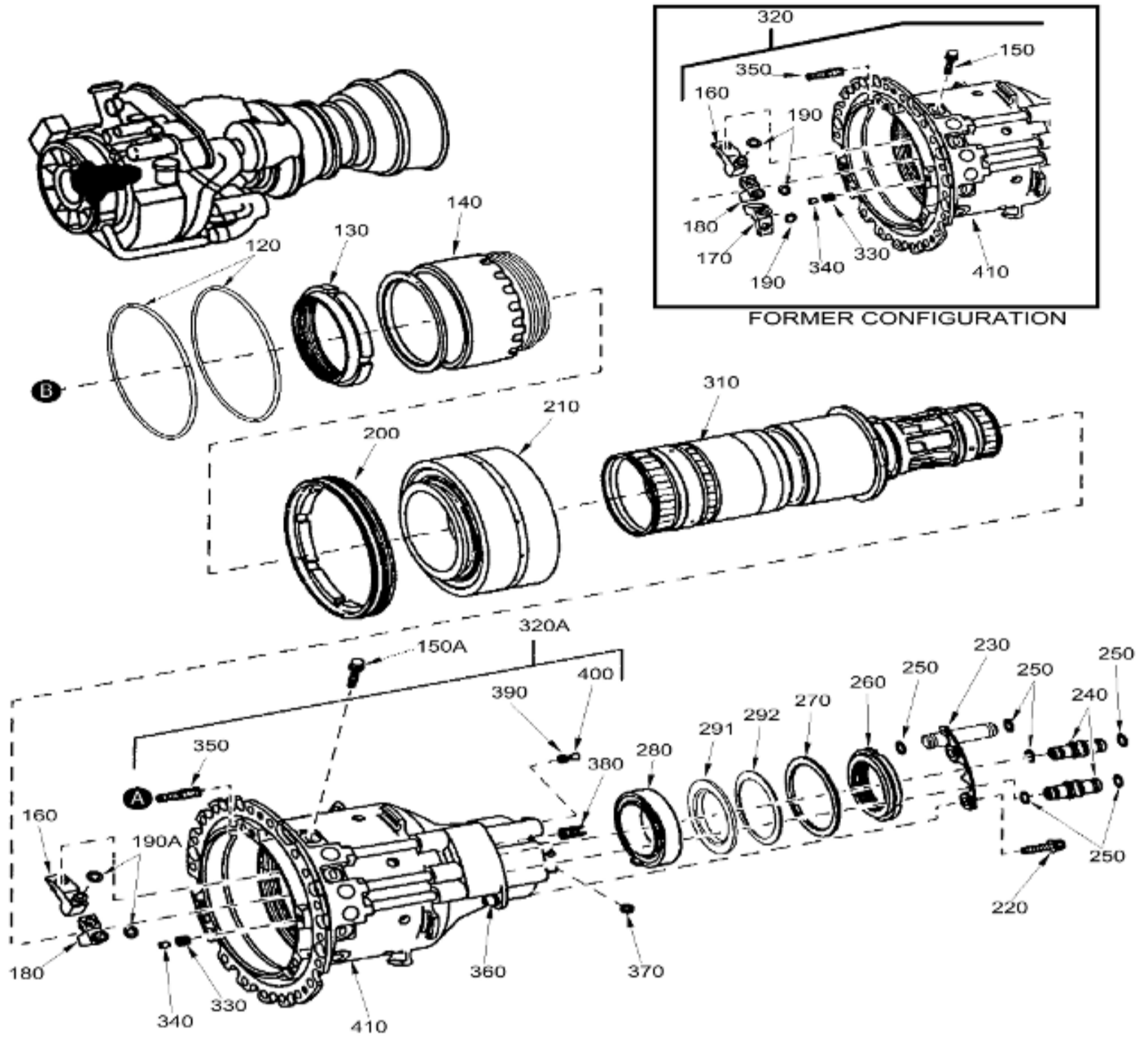
This technical data is considered subject to the Export Administration Regulations (EAR) pursuant to 15 CFR Parts 730-774. Transfer of this data by any means to a Non-U.S. Person, whether in the United States or abroad, without the proper U.S. Government authorization (e.g., License, exemption, NLR, etc.), is strictly prohibited.

Copyright (2022) General Electric Company, U.S.A.



1299319-00

A-SUMP OUTPUT SHAFT ASSEMBLY  
 Figure 01 (Sheet 1)



1299320-01

A-SUMP OUTPUT SHAFT ASSEMBLY  
 Figure 01 (Sheet 2)

ITEM	PART NUMBER	NOMENCLATURE	USAGE CODE	UNITS PER ASSY
001	NHA	SHAFT ASSY-A-SUMP OUTPUT SIN 04300 SEE 72-30-00-01-090 FOR NHA		RF
010	4046T32P01	. NUT-LOCK SIN 04300 2		3
-010A	4046T32P02	. NUT-LOCK SIN 04300 2		ALT
-010B	4046T32P03	. NUT-LOCK SIN 04300 2		ALT
-010C	4046T32P04	. NUT-LOCK SIN 04300 2		ALT
020	6053T48P06	. SEAL-NO.1 CARBON SIN 04300 5	a	1
020A	6053T48P05	. SEAL-NO.1 CARBON SIN 04300 5 NOTE WHEN REBUILDING A NO.1 CARBON SEAL, USE THE FOLLOWING KIT:	b	ALT

		SEAL PN KIT PN 6053T48P05 602664 6053T48P06 SSCY12082-KIT		
-030	SSCY12082-KIT	. . PARTS KIT-NO.1 CARBON SEAL (SPAD)	a	AR
-030A	602664	. . PARTS KIT-NO.1 CARBON SEAL (SPAD)	b	AR
040	SSCY4614-4	. . . PACKING-PREFORMED (SPAD) POST SB 72-0027	a	AR
050	SSCY12082-2	. . . RING-MATCHED SEAL	a	1
050A	201647-02	. . . RING-SEAL	b	2
060	SSCY5158-2	. . . SPRING-HELICAL	a	9
060A	201016-7	. . . SPRING-COMPRESSION	b	6
070	SSCY4615-2	. . . SPRING-EXTENSION GARTER	a	2
070A	201113-07	. . . SPRING-EXTENSION	b	2
075	SSCY12082-1	. . . RING-MATCHED SEAL	a	1
080	SSCY7958-3	. . RING-RETAINING (SPAD) POST SB 72-0027	a	AR
080A	201113-05	. . RING-SNAP (SPAD) POST SB 72-0027	b	AR
090	SSCY7958-2	. . INSERT-CASING SEAL (SPAD) POST SB 72-0027	a	AR
090A	201209-03	. . PLATE ASSY-COVER (SPAD) POST SB 72-0027	b	AR
095	201113-09	. . PACKING-PREFORMED (SPAD) POST SB 72-0027	b	AR
105	200581-7	. . LOCK PIN-ROTATION (SPAD) POST SB 72-0027	b	AR
110	SSCY7958-1	. . CASING-SEAL	a	1
110A	201236-01	. . HOUSING	b	1
120	J221P154	. PACKING-PREFORMED SIN 04300 15		2
130	4040T71P01	. NUT-NO.1 BEARING INNER RACE SIN 04300 3		1
-130A	4040T71P03	. NUT-NO.1 BEARING INNER RACE SIN 04300 3		ALT
140	5124T03G01	. SEAL-ROTATING SIN 04300 4		1
150	J812P004A	. BOLT-12-POINT SHEAR SIN 04300 21 QTY CHANGED TO 2 BY SB 72-0010		3
150A	J812P004A	. BOLT-12-POINT SHEAR SIN 04300 21 POST SB 72-0010		2
160	5124T04G01	. NOZZLE-SEAL AND NO.1 BEARING OIL SIN 04300 14		1
170	5035T26G02	. NOZZLE-NO.1 BEARING AIR SIN 04300 22 DEL BY SB 72-0010		1
180	5035T33G01	. NOZZLE-EMERGENCY OIL-NO1 BEARING SIN 04300 23		1
190	J221P008	. PACKING-PREFORMED SIN 04300 17 QTY CHANGED TO 2 BY SB 72-0010		3
190A	J221P008	. PACKING-PREFORMED SIN 04300 17 POST SB 72-0010		2
200	4040T73P01	. NUT-SELF-LOCKING SIN 04300 6		1
210	6064T34P01	. BEARING-NO.1 ANNULAR DUPLEX BALL SIN 04300 7		1
-210A	6064T34P02	. BEARING-NO.1 ANNULAR DUPLEX BALL SIN 04300 7		ALT
-210B	5043T18P01	. BEARING-NO.1 ANNULAR DUPLEX BALL SIN 04300 7		ALT
220	J643P06A	. BOLT-MACHINE SIN 04300 20		2
230	4053T44G01	. TUBE ASSY-A-SUMP TRANSFER		1

		SIN 04300 18		
240	4041T51P02	. TUBE-A-SUMP TRANSFER SIN 04300 19		2
250	J221P010	. PACKING-PREFORMED SIN 04300 16		6
260	4106T42P02	. NUT-SELF LOCKING-NO.2 & NO.6 BEARING SIN 04300 11		1
270	4041T69P02	. RING-RETAINING-INTERNAL SIN 04300 13		1
280	5121T46P01	. BEARING-NO.2 TRILOBED ROLLER SIN 04300 10		1
-280A	5121T46P02	. BEARING-NO.2 TRILOBED ROLLER SIN 04300 10		ALT
291	4106T40P06	. SEAL PLATE SIN 04300 24		1
292	4106T43P01	. SPRING-BEARING-BELLEVILLE SIN 04300 25		1
310	5083T56P01	. SHAFT-OUTPUT SIN 04300 9 REPL BY 5083T56P02		1
310A	5083T56P02	. SHAFT-OUTPUT SIN 04300 9 POST SB 72-0017		1
320	5083T03G01	. HOUSING-NO.1 AND NO.2 BEARING SIN 04300 8 SUPSD BY 5083T03G02		1
320A	5083T03G02	. HOUSING-NO.1 AND NO.2 BEARING SIN 04300 8 POST SB 72-0010		1
330	J109P53A	. . PLUG & PIN-EXP SIN 04300 8 9		1
340	J109P53B	. . PLUG & PIN-EXP SIN 04300 8 8		1
350	4041T43P01	. . STUD SIN 04300 8 3		3
360	J151P03	. . NUT-SELF-LOCKING SIN 04300 8 17		1
370	3016T81P11	. . PIN & PLUG SIN 04300 8 10		1
380	MS51830-CA201L	. . INSERT-SCREW THREAD SIN 04300 8 4		1
390	J109P52A	. . PLUG & PIN-EXP SIN 04300 8 13		1
400	J109P52B	. . PLUG & PIN-EXP SIN 04300 8 12		1
410	5078T39P01	. . HOUSING-BEARING SIN 04300 8 2		1

- ITEM NOT ILLUSTRATED

GE Designated: - CONFIDENTIAL Subject to the restrictions on the media