



No. AS365-52.00.29

Civil version(s): N, N1, N2, N3

ALERT SERVICE BULLETIN

CORRECTIVE MEASURE

DOORS - Emergency exit
Emergency evacuation labels for helicopters
installed with fixed parts of FLIR system

Corresponds to modification MC90B73



Revision No.	Date of issue
Revision 0	2021-02-10

Summary:

When the helicopter is installed with the FLIR system, the upper strut of the FLIR external assembly does not let the front passenger door open. For emergency evacuation, rescuers near the helicopter can only eject the door with jettison handles which are installed in the cabin. This ALERT SERVICE BULLETIN installs labels on the external LH and RH side of the helicopter to give instructions to the rescuers on how to operate the jettison handles.

Compliance:

It is mandatory to comply with this ALERT SERVICE BULLETIN.



[ASB AS365 52.00.29](#)

No. AS365-52.00.29

1. PLANNING INFORMATION



CAUTION

MAKE SURE THAT THE MODIFICATIONS RELATED TO THIS ALERT SERVICE BULLETIN AGREE WITH THE HELICOPTER CONFIGURATION AT THIS TIME. IF THE MODIFICATIONS DO NOT AGREE WITH THE HELICOPTER CONFIGURATION:

- PREPARE THE NECESSARY ADAPTATION WORK.
- GET THE APPROVAL BY THE APPLICABLE LOCAL AIR TRANSPORT AUTHORITIES.
- COMPLY WITH THE AIRWORTHINESS REQUIREMENTS.

THIS ALERT SERVICE BULLETIN IS WRITTEN FOR THE INITIAL HELICOPTER CONFIGURATION SPECIFIED IN THE INDIVIDUAL INSPECTION LOGBOOK (RIC). IT INCLUDES ONLY THE POST-DELIVERY CONFIGURATION CHANGES WHICH ARE KNOWN AND APPROVED BY AIRBUS HELICOPTERS.

1.A. EFFECTIVITY

1.A.1. Helicopters/installed equipment or parts

Helicopters which meet all the conditions that follow:

- Installed with the fixed parts of the FLIR system.
- Have not embodied modification MC90B73. Refer to the Aircraft Logbook to identify the modification status of the helicopter.



1.A.2. Non-installed equipment or parts

Not applicable.

No. AS365-52.00.29

1.B. ASSOCIATED REQUIREMENTS

For helicopters installed with the removable parts of the Emergency Floatation System:

- Comply with the ALERT SERVICE BULLETIN No. 52.00.27 before you comply with this ALERT SERVICE BULLETIN No. 52.00.29.
- If you find that your helicopter configuration does not meet all the other conditions given in paragraph 1.A.1. of the ALERT SERVICE BULLETIN No. 52.00.27, continue to comply with this ALERT SERVICE BULLETIN No. 52.00.27.

NOTE

The objective of this ALERT SERVICE BULLETIN No. 52.00.29 is to give instructions to rescuers near the helicopter to operate jettison handles in the cabin for the front passenger door. A rescuer can only operate the jettison handle through access at the cockpit door. If the Emergency Floatation System is deployed, the rescuer cannot open the cockpit door. If you complied with the ALERT SERVICE BULLETIN No. 52.00.27, the rescuer can eject the cockpit door and get access to the jettison handle for the front passenger door.

1.C. REASON

The front passenger door is an emergency exit. It must be possible for rescuers near the helicopter to open the door. When the helicopter is installed with the FLIR system, the upper strut of the FLIR external assembly does not let the front passenger door open. But a rescuer can continue to eject the door with the jettison handles which are installed in the cabin.

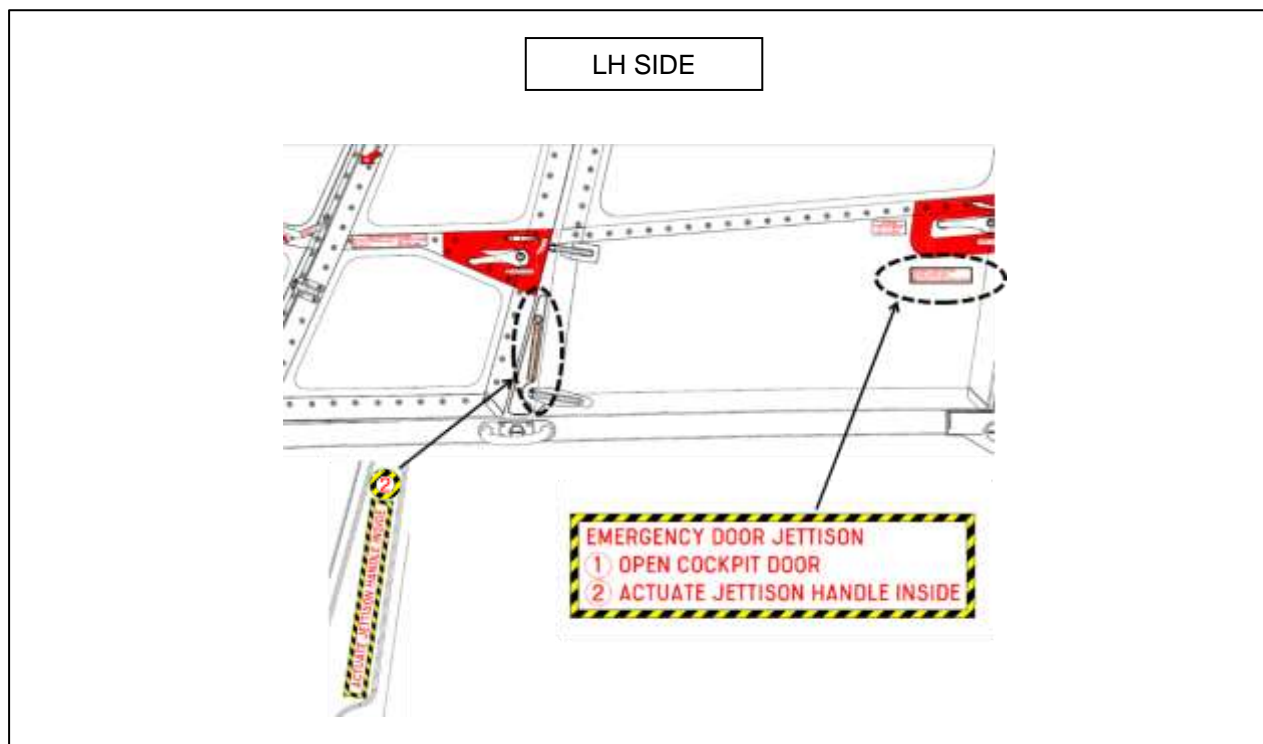


No. AS365-52.00.29

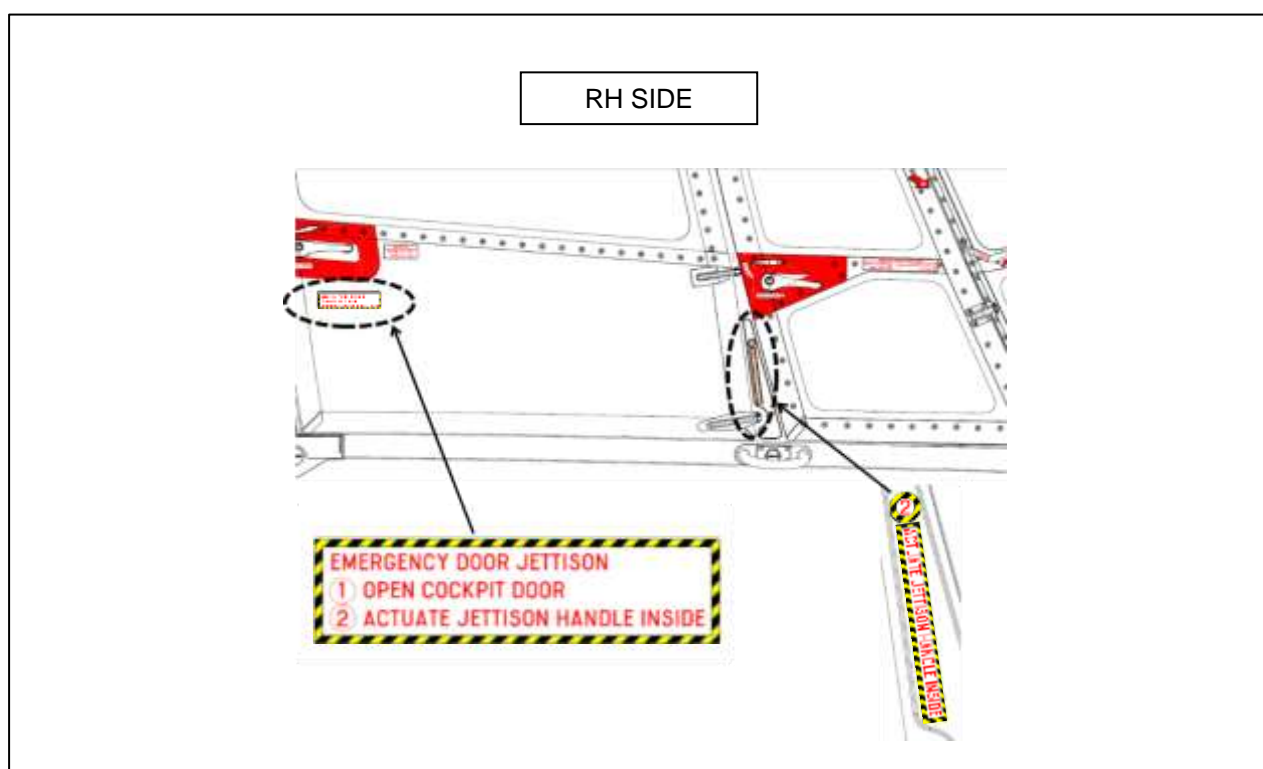
The rescuer can operate the jettison handle through the access at the cockpit door.



This ALERT SERVICE BULLETIN installs labels on the external LH and RH side of the helicopter to give instructions to the rescuers on how to operate the jettison handles.



No. AS365-52.00.29



Airbus Helicopters also supplies labels in Japanese, Spanish and Indonesian. If such labels are necessary, you can install these labels adjacent to the mandatory English labels.

If a different language is necessary and it is not one of the languages given above, you can locally make the labels in that language. If you do so, it is your responsibility to do the translation and get the approval by the applicable local air transport authorities.

1.D. DESCRIPTION

This ALERT SERVICE BULLETIN consists in installing English labels on the helicopter in the area of the front passenger doors. The labels are installed on the LH and RH sides of the helicopter.

Labels in other languages, if applicable, are installed adjacent to the English labels.

1.E. COMPLIANCE

1.E.1. Compliance at H/C manufacturer level

Helicopters/installed equipment or parts:

Airbus Helicopters makes it mandatory to comply with the instructions of paragraph 3. (but this is not applicable to paragraph 3.B.2.c.) of this ALERT SERVICE BULLETIN before the delivery of the helicopter.

Non-installed equipment or parts:

Not applicable.

No. AS365-52.00.29

1.E.2. Compliance in service

Helicopters/installed equipment or parts:

The operator work must do the work on the helicopter.

Comply with paragraph 3. of this ALERT SERVICE BULLETIN not more than 12 months after you received this ALERT SERVICE BULLETIN (refer to the issue date on the page footer).

Non-installed equipment or parts:

Not applicable.

1.F. APPROVAL

Approval of modifications:

The information or instructions relate to modification MC90B73, which was approved on December 11, 2020 through the CRD DAMC.90B73A Revision 2 under the authority of EASA Design Organization Approval No. 21J.700 for civil version helicopters subject to an Airworthiness Certificate.



Approval of this document:

The technical information contained in this ALERT SERVICE BULLETIN Revision 0 was approved on February 05, 2021 under the authority of EASA Design Organization Approval No. 21J.700 for civil version helicopters subject to an Airworthiness Certificate.

The technical information contained in this ALERT SERVICE BULLETIN Revision 0 was approved on February 05, 2021 under the prerogatives of the recognition of design capability FRA21J-002-DGA for French Government helicopters.

1.G. MANPOWER



Airbus Helicopters recommends that the personnel who will do this ALERT SERVICE BULLETIN have this qualification:

Qualification:
1 Mechanical Technician.



The man-hours are an estimate given for information only and for a standard helicopter configuration.

Estimated man-hours:
0.5 hour.



The helicopter downtime is an estimate given for information only and for a standard helicopter configuration.

The estimate of the helicopter downtime is 1 hour.

1.H. WEIGHT AND BALANCE



The change in weight and moment is negligible.

No. AS365-52.00.29

1.I. POWER CONSUMPTION

Not applicable.

1.J. SOFTWARE UPGRADES/UPDATES

Not applicable.

1.K. REFERENCES

These documents are necessary to comply with this ALERT SERVICE BULLETIN:

Information Notice

IN: 3447-I-00: Introduction of the digital Service Bulletin reporting service R-TEX
IN: 3481-I-00: The Marketplace: an AirbusWorld eOrdering service

Standard Practices Manual

MTC: 20-04-07-401: Application of marking media and decorations - Paint and primer application procedure
MTC: 20-07-01-201: Handling of helicopters in a hangar and in a prepared area - Handling
MTC: 20-07-02-201: Helicopter parked in a repair shop - Safety instructions
MTC: 20-07-03-408: Appearance checks on an aircraft after an inspection or repair - Technical instructions
MTC: 20-08-05-102: Rules in force applicable for repair and maintenance of aircraft - General rules applicable to aircraft

1.L. OTHER AFFECTED PUBLICATIONS

Not applicable.

1.M. PART INTERCHANGEABILITY OR MIXABILITY

Not applicable.

No. AS365-52.00.29

2. EQUIPMENT OR PARTS INFORMATION

2.A. EQUIPMENT OR PARTS: PRICE – AVAILABILITY – PROCUREMENT

Price

The labels are free of charge.

For information about the price of the other components, or for aid, contact the Airbus Helicopters Network Sales and Customer Relations Department.

Availability

Contact the Sales and Customer Relations Department to know the delivery lead times.

Procurement

There will be special pricing conditions for the supply of components until February 05, 2022. Send an order for the necessary quantities to the Airbus Helicopters Network Sales and Customer Relations Department:

Airbus Helicopters
Etablissement de Marignane
Direction Ventes et Relations Client
13725 MARIGNANE CEDEX
FRANCE

In the purchase order, write the information that follows:

- The mode of transport
- The destination
- The serial numbers of the helicopters to change.

Send your order for ALERT SERVICE BULLETINS to:
Telex: HELICOP 410 969F
Fax: +33 (0)4.42.85.99.96

2.B. LOGISTIC INFORMATION

Not applicable.

No. AS365-52.00.29

2.C. EQUIPMENT OR PARTS REQUIRED PER HELICOPTER/COMPONENT

Kits order for one helicopter or one assembly:

Key Word	Qty	New P/N	Item	Old P/N	→	Instruction
Jettison handle actuate English label	2	365P64-6038-20	1			
Emergency door jettison English label	2	365P64-6038-21	2			
Number two label	2	365P64-6038-28	3			

Equipment or parts separate order:

Send an order for parts given in Work Cards used in this ALERT SERVICE BULLETIN as necessary.

If necessary, send an order for the parts given in the table that follows:

- Send an order for the labels (4) and (5), or labels (6) and (7), or labels (8) and (9) only if you install the set of labels in the specified language.
- If you send an order for one of these labels, send also an order for the label (3).
- If you locally make labels in a different language (other than the languages shown in the table below), send also an order for the label (3).

Key Word	Qty	New P/N	Item	Old P/N	→	Instruction
Number two label	2	365P64-6038-28	3			
Jettison handle actuate Japanese label	2	365P64-6038-22	4			
Emergency door jettison Japanese label	2	365P64-6038-23	5			
Jettison handle actuate Spanish label	2	365P64-6038-24	6			
Emergency door jettison Spanish label	2	365P64-6038-25	7			
Jettison handle actuate Indonesian label	2	365P64-6038-26	8			
Emergency door jettison Indonesian label	2	365P64-6038-27	9			

NOTE

The order for the label (3) is added to the same label given in the table 'Kits order for one helicopter or one assembly'.

No. AS365-52.00.29

Consumables to be ordered separately:

Send an order for parts given in Work Cards used in this ALERT SERVICE BULLETIN.

You can send an order for the consumables from the AirbusWorld Marketplace through e-ordering (IN 3481-I-00). If you cannot get access to e-ordering, please contact your Logistic Focal Point.

2.D. EQUIPMENT OR PARTS TO BE RETURNED

Not applicable.

No. AS365-52.00.29

3. ACCOMPLISHMENT INSTRUCTIONS

3.A. GENERAL

- Comply with the instructions on handling of helicopters in a hangar and in a prepared area. Refer to the Work Card 20-07-01-201 (MTC).
- Comply with the instructions on helicopters parked in a repair shop. Refer to the Work Card 20-07-02-201 (MTC).
- Comply with the rules in force applicable for repair and maintenance of aircraft. Refer to the Work Card 20-08-05-102 (MTC).

3.B. WORK STEPS

3.B.1. Preliminary steps

Park the helicopter in a maintenance hangar.

3.B.2. Procedure

Only the installation for the right side is given. Do the same procedure for the left side.



CAUTION

**BEFORE INSTALLATION ON THE HELICOPTER,
CHECK THE EXPIRY DATES OF THE LABELS. AN
EXPIRED LABEL CANNOT BOND CORRECTLY TO
THE HELICOPTER.**

When you refer to Work Card 20-04-07-401 (MTC), select the applicable instructions for labels with part reference standard ECS 2390.

NOTE 1

All the labels supplied through this ALERT SERVICE BULLETIN are made from the part reference standard ECS 2390.

3.B.2.a. Installation of default English labels ([Figure 1](#), DETAILS B and C)

- Refer to Work Card 20-04-07-401 (MTC).
- Install the labels (1), (2) and (3).

No. AS365-52.00.29

3.B.2.b. Installation of Japanese, Indonesian or Spanish labels ([Figure 2](#) or [Figure 3](#))

NOTE 2

This paragraph is applicable only if labels in Japanese, Indonesian or Spanish language are necessary.

Refer to Work Card 20-04-07-401 (MTC).

- If Japanese text is required:
 - . Install the label (4) adjacent to the label (1) ([Figure 2](#), DETAILS A and B).
 - . Install the label (5) adjacent to the label (2) ([Figure 2](#), DETAILS D and E).
 - . Install the label (3) above the label (4) ([Figure 2](#), DETAILS A and B).
- If Indonesian text is required:
 - . Install the label (8) adjacent to the label (1) ([Figure 2](#), DETAILS A and C).
 - . Install the label (9) adjacent to the label (2) ([Figure 2](#), DETAILS D and F).
 - . Install the label (3) above the label (8) ([Figure 2](#), DETAILS A and C).
- If Spanish text is required:
 - . Install the label (6) adjacent to the label (1) ([Figure 3](#), DETAIL A).
 - . Install the label (7) adjacent to the label (2) ([Figure 3](#), DETAIL B).
 - . Install the label (3) above the label (6) ([Figure 3](#), DETAIL A).

3.B.2.c. Installation of labels in other languages ([Figure 1](#) and [Figure 2](#) or [Figure 3](#))

NOTE 3

This paragraph is applicable only if labels in a different language (other than English, Japanese, Indonesian and Spanish) are necessary.

NOTE 4

It is the responsibility of the operator to do the translation and to get the approval by the applicable local air transport authorities.

- Locally make the labels in the necessary language:
 - . Refer to the texts in the default English labels (1) and (2) for the content, sizing, color and format ([Figure 1](#), DETAILS B and C).
 - . Refer to the Appendix 4. for the dimensions of the labels.

NOTE 5

The dimensions are in millimetres unless differently specified.

- Install the locally-made labels and the label (3) ([Figure 2](#) or [Figure 3](#)). Refer to the same principle of installation in paragraph 3.B.2.b.

3.B.3. Final steps

- Clean the area. Refer to Work Card 20-07-03-408 (MTC).
- Set the helicopter to flight condition.

No. AS365-52.00.29

3.C. RECORD OF COMPLIANCE

Compliance with this document:

- Record the full compliance with this ALERT SERVICE BULLETIN, with the revision number, in the helicopter documents.
- Record the full compliance with this ALERT SERVICE BULLETIN in the R-TEX tool (see Information Notice No. 3447-I-00 for instructions):
QR-Code or hypertext link



NOTE 6

The recording of compliance with ALERT SERVICE BULLETINS in the R-TEX tool does not replace the recording in the helicopter documents.

[ASB AS365 52.00.29](#)

Tracking of modifications in the documentation:

Record the full embodiment of modification MC90B73 in the helicopter documents.

If you installed more labels (in a language other than English) adjacent to the default English labels, record the installation of the labels and their language in the helicopter documents.

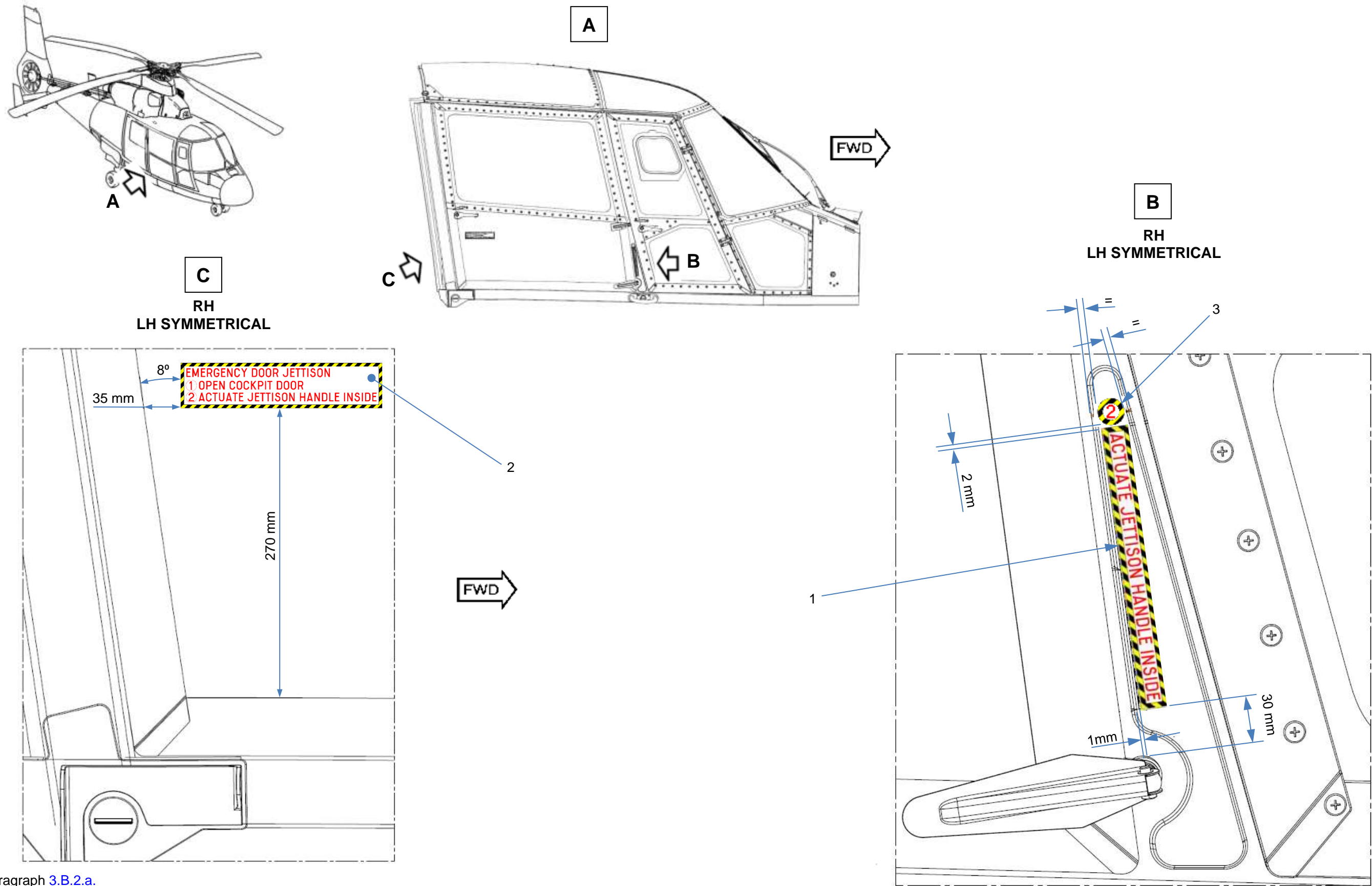
3.D. OPERATING AND MAINTENANCE INSTRUCTIONS

Not applicable.

No. AS365-52.00.29

PAGE LEFT BLANK INTENTIONALLY

No. AS365-52.00.29

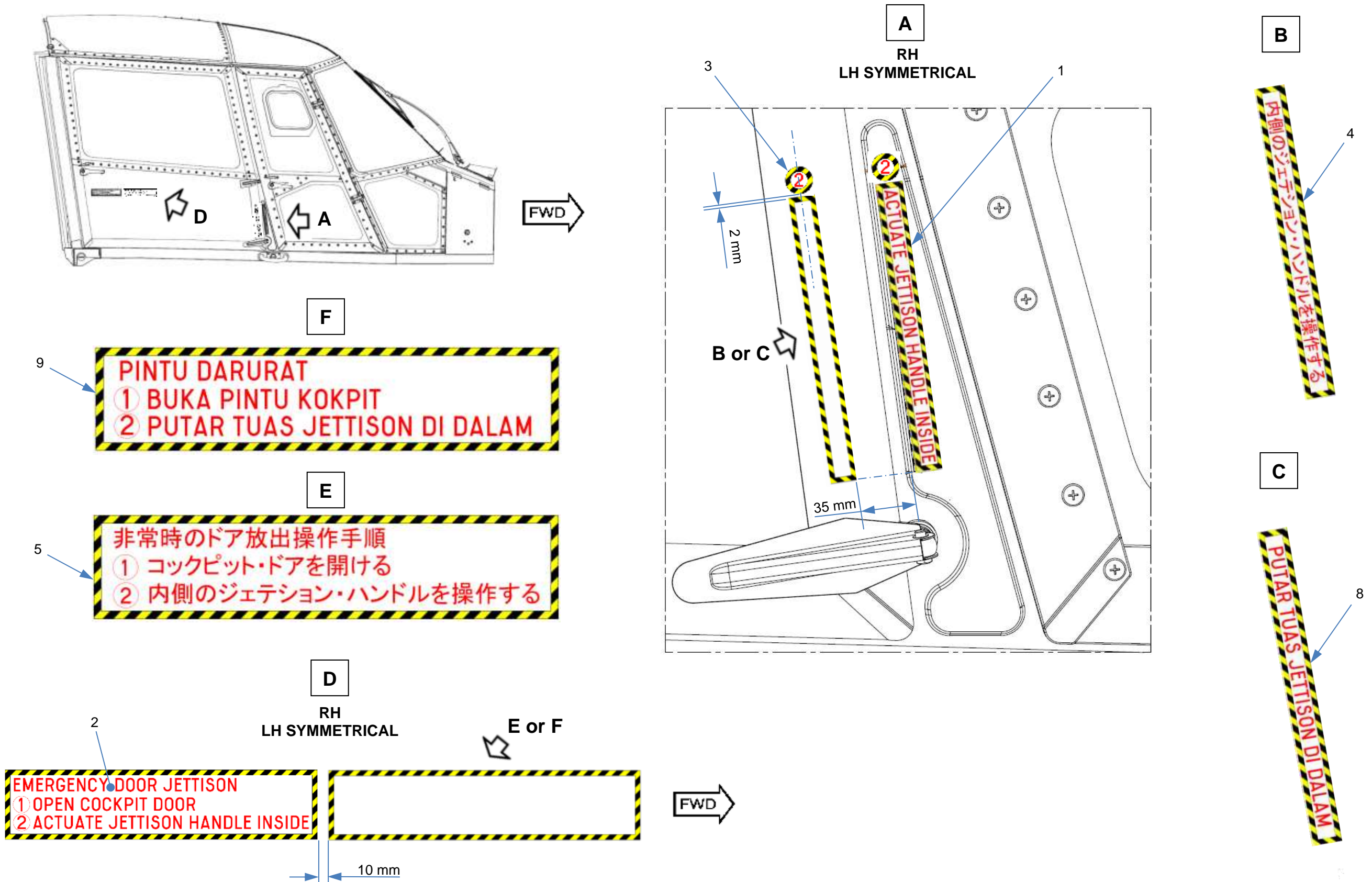


Back to paragraph [3.B.2.a](#)
Back to paragraph [3.B.2.c](#)

Figure 1

PAGE LEFT BLANK INTENTIONALLY

No. AS365-52.00.29

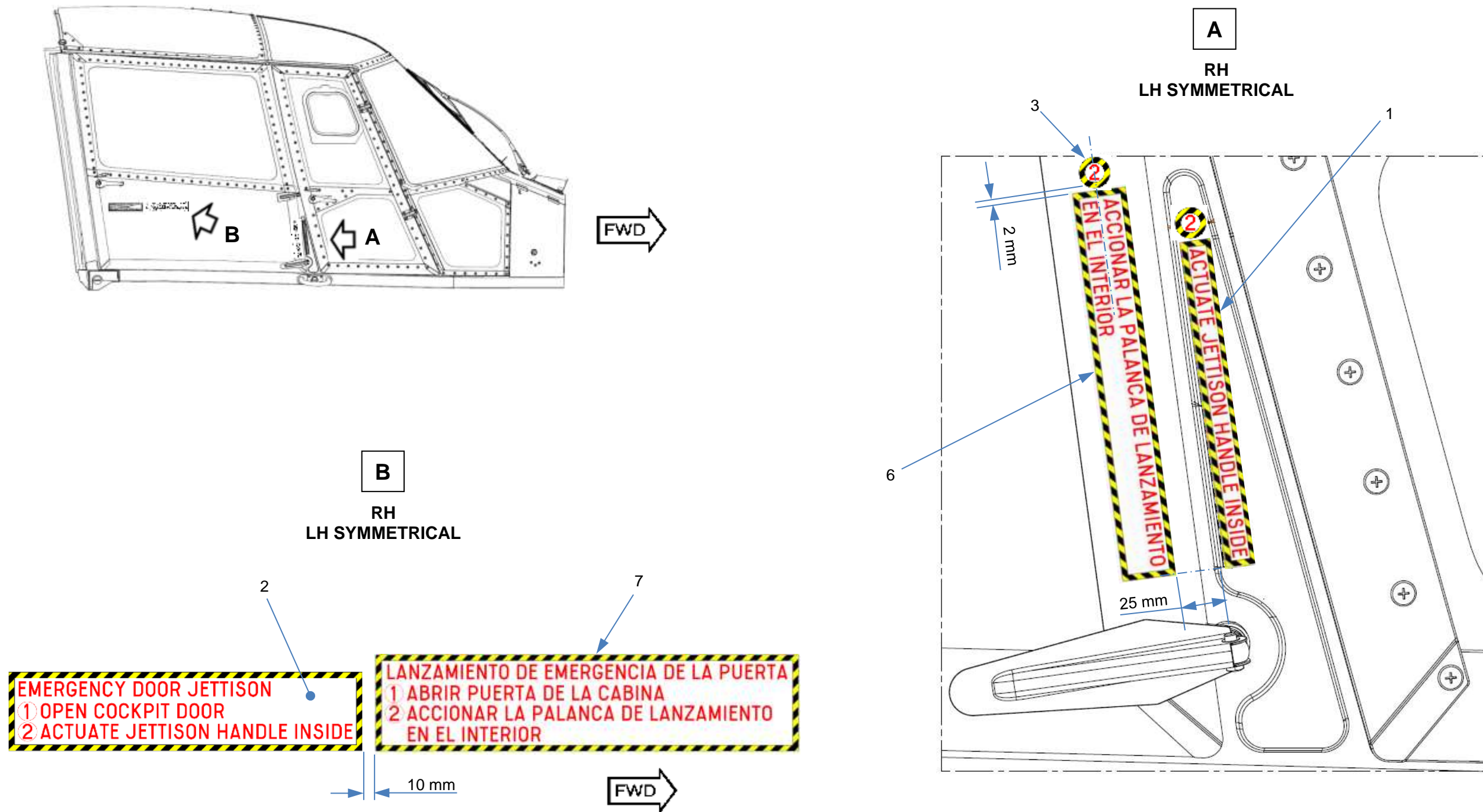


Back to paragraph [3.B.2.b](#)
Back to paragraph [3.B.2.c](#)

Figure 2

PAGE LEFT BLANK INTENTIONALLY

No. AS365-52.00.29



Back to paragraph [3.B.2.b](#)
Back to paragraph [3.B.2.c](#)

Figure 3

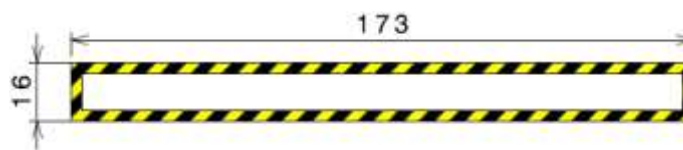
PAGE LEFT BLANK INTENTIONALLY

No. AS365-52.00.29

4. APPENDIX



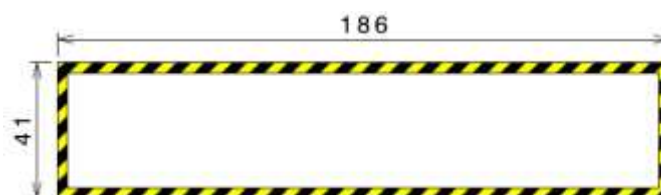
Border size



Actuate label size – single-row text



Actuate label size – double-row text



Jettison label size – three-row text



Jettison label size – four-row text