



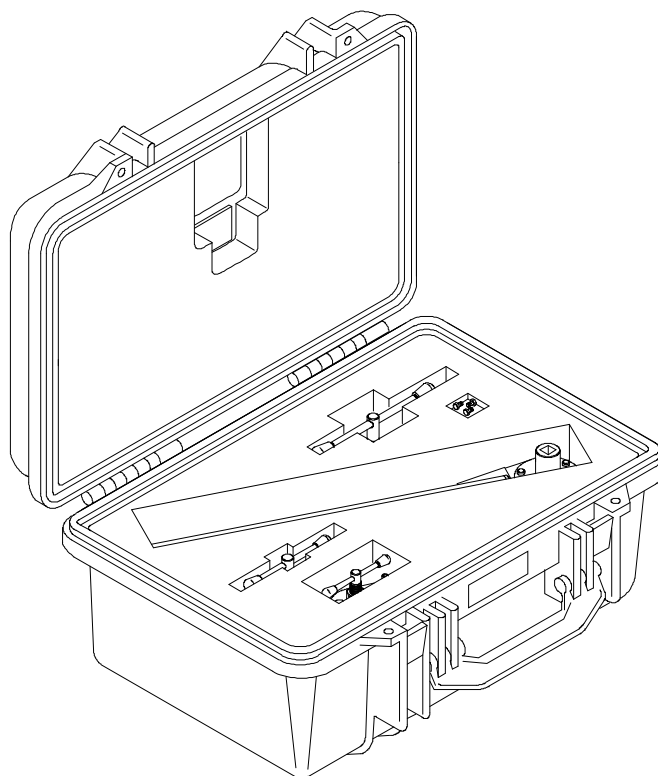
GSE & TOOL USE AND MAINTENANCE MANUAL

Manual number:
MAN-3G6305G03531
REV. A

Pag. 1 of 18

GSE & TOOL MANUAL

TITLE	TOOL KIT, INPUT FLANGE / GIMBAL REPL. P/N 3G6305G03531
--------------	---



	GSE & TOOL USE AND MAINTENANCE MANUAL	Manual number: MAN-3G6305G03531 REV. A Pag. 2 of 18
---	--	--

REVISION HISTORY

REV	CHANGE DESCRIPTION	DATE
A	First issue	12/11/2021

SUMMARY

SUMMARY	3
LIST OF TABLE	4
LIST OF FIGURE	4
1. SCOPE	5
1.1. APPLICABILITY	5
1.2. OBJECT	5
1.3. WARNING AND SAFETY INSTRUCTIONS	5
2. DOCUMENTS	6
2.1. APPLICABLE DOCUMENTS	6
2.2. ACRONYMS USED	6
3. DESCRIPTION	7
4. TOP ASSEMBLY DRAWINGS	7
5. IDENTIFICATION	8
6. OVERALL DIMENSIONS	8
7. WEIGHT	8
8. MAIN PARTS	9
9. MAIN FEATURES DESCRIPTION	10
10. WARNING AND SAFETY NOTES	11
10.1. WARNING NOTE	11
10.2. SAFETY NOTES	12
11. STORAGE	13
11.1. LUBRICATION BEFORE STORAGE	13
11.2. STORAGE CONFIGURATION	13
12. MAINTENANCE	13
12.1. CLEANING	13
12.1.1. SPECIAL TOOLS, FIXTURE AND EQUIPMENT	13
12.1.2. PART REQUIREMENTS	13
12.1.3. MANUAL CLEANING	13
12.2. CHECKS	14
12.2.1. SPECIAL TOOLS, FIXTURE AND EQUIPMENT	14
12.2.2. VISUAL EXAMINATION	14
12.2.3. PERIODICAL CHECKS	15
12.2.4. DIMENSIONAL CHECKS	15
12.2.5. SPECIAL CHECKS SUMMARY	15
12.3. REPLACEMENT	15
12.3.1. REPLACEMENT PROCEDURES	15



GSE & TOOL USE AND MAINTENANCE MANUAL

Manual number:
MAN-3G6305G03531
REV. A

Pag. 4 of 18

13.	CALIBRATION	15
14.	SHELF LIFE	15
15.	SPARE PARTS	16
16.	CE MARKING.....	17
	ANNEX A.....	18

LIST OF TABLE

Table 1 – Warning Instruction	5
Table 2 – Applicable Documents.....	6
Table 3 – Warning Note.....	11
Table 4 – Visual Check.....	14
Table 5 – Spare Parts.....	17

LIST OF FIGURE

<i>Figure 1 – Tool kit, input flange / gimbal repl.</i>	<i>7</i>
<i>Figure 2 – LHD Identification tag with P/N</i>	<i>8</i>
<i>Figure 3 – Main Parts</i>	<i>9</i>
<i>Figure 4 – Safety Notes.....</i>	<i>12</i>
<i>Figure 5 – Spare Parts</i>	<i>16</i>

1. SCOPE

1.1. APPLICABILITY

The contents of this document are meant to provide information on the P/N 3G6305G03531 TOOL KIT, INPUT FLANGE / GIMBAL REPL..

1.2. OBJECT

The object of this document is to describe the AGE and its components, its main features and it will also provide all needed maintenance requirements to keep in service the 3G6305G03531 TOOL KIT, INPUT FLANGE / GIMBAL REPL..

1.3. WARNING AND SAFETY INSTRUCTIONS

A number of symbols are used throughout this document to indicate information to which the user should pay attention to. These are indicated below along with the specific meaning.




 Warning	...Indicates a danger that might arise from a product and might result in severe injuries or even death, if no precautions are taken.
 Caution	... Indicates a potentially dangerous situation, which might result injury or damage to the equipment.
 Notice	...Indicates a note providing information to help the reader during the procedure.

Table 1 – Warning Instruction

	GSE & TOOL USE AND MAINTENANCE MANUAL	Manual number: MAN-3G6305G03531 REV. A
		Pag. 6 of 18

2. DOCUMENTS

2.1. APPLICABLE DOCUMENTS

The following table lists the applicable documents

REF	REFERENCE OF DOCUMENT	TITLE
N.A.	N.A.	N.A.

Table 2 – Applicable Documents

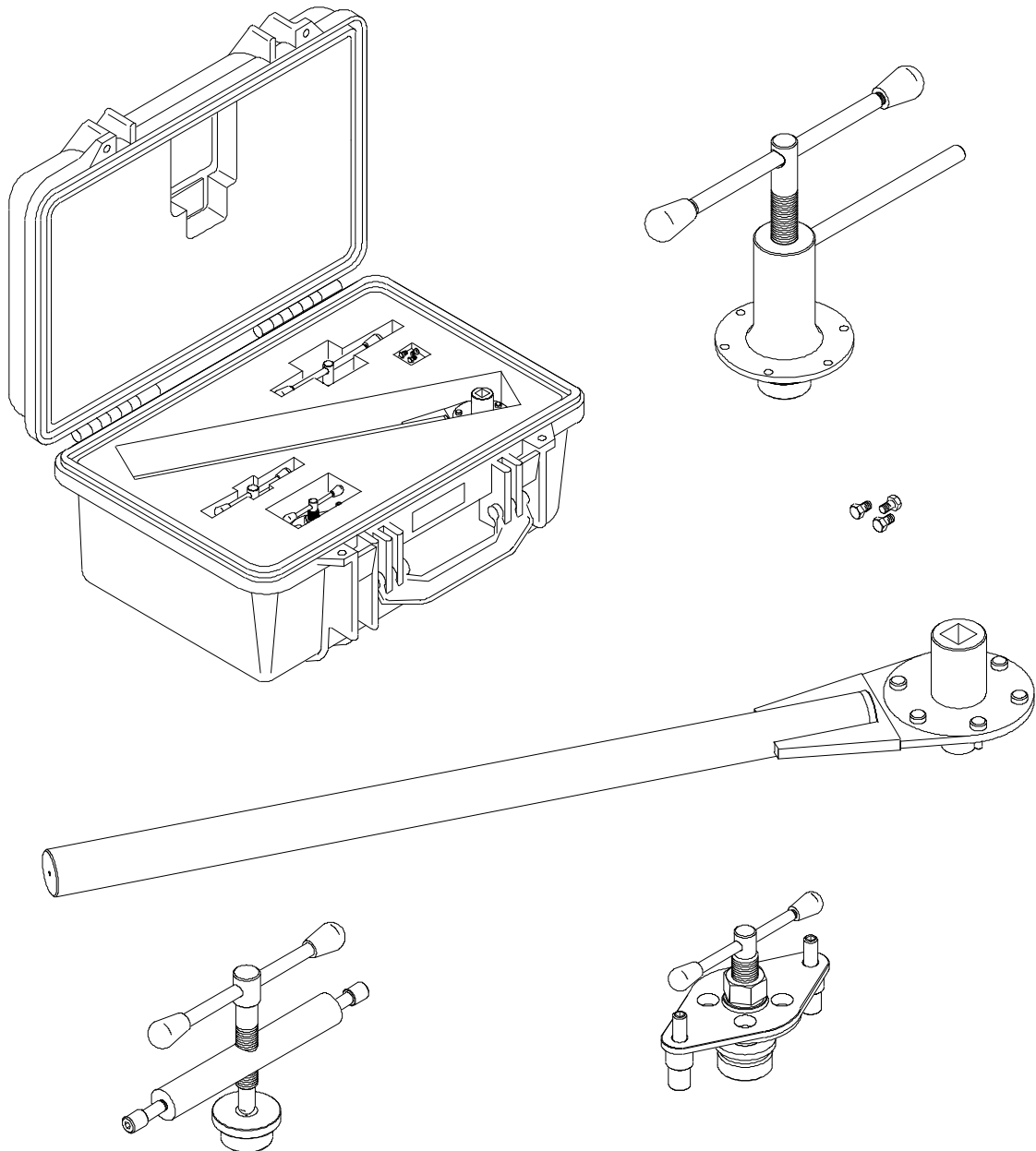
2.2. ACRONYMS USED

The main acronyms used in this document are listed below:

LHD	Leonardo Helicopter Division
HC	Helicopter
P/N	Part Number
S/N	Serial Number
N.A.	Not Applicable
MGB	Main Gear Box

3. DESCRIPTION

This tool has the function of replacing the inlet flange and gimbal inlet assembly on the main gearbox assembly (MGB).



3G6305G03531_1

Figure 1 – Tool kit, input flange / gimbal repl.

4. TOP ASSEMBLY DRAWINGS

Refer to P/N 3G6305G03531 TOOL KIT, INPUT FLANGE / GIMBAL REPL.

5. IDENTIFICATION

The tool identification P/N is marked on the LHD identification tag.

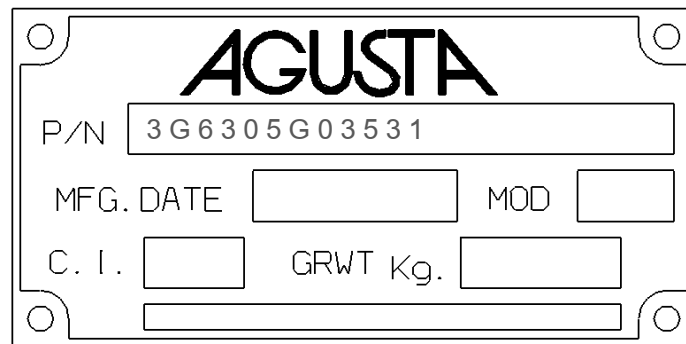


Figure 2 – LHD Identification tag with P/N

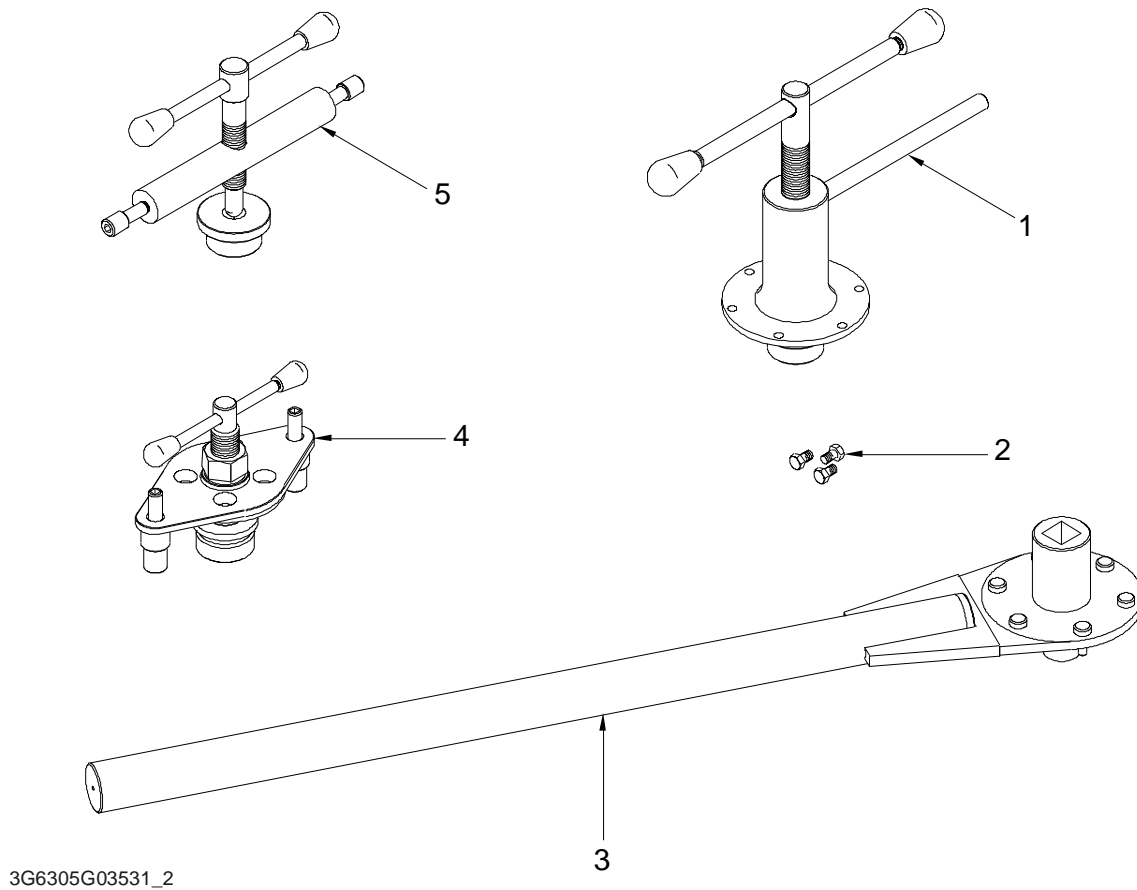
6. OVERALL DIMENSIONS

- Length: 800 mm
- Width: 521 mm
- Height: 320mm

7. WEIGHT

- Total Weight: 22 kg

8. MAIN PARTS



3G6305G03531_2

Figure 3 – Main Parts

The main parts of the TOOL KIT, INPUT FLANGE / GIMBAL REPL. are:

1. Puller
2. Bolt
3. Wrench
4. Pusher
5. Puller

9. MAIN FEATURES DESCRIPTION

This tool, supplied in a suitable transportation box, is composed of the following items:

- Wrench and reaction tool, input pinion ring nut. The wrench is used on aircraft to loosen and torque the ring nut that attaches the input flange to the shaft end of the input pinion. The reaction tool is necessary to prevent the rotation of the input pinion during torque loading procedure of locknut. They must be used together, to replace the input flange, the gimbal input and the input seal when damaged.
- Extractor, input flange, used on aircraft to pull out the input flange from the shaft end of the input pinion. It is used to pull the input flange out of the input pinion, in order to remove the gimbal input and the input seal, when damaged.
- Installation tool, input flange, used on aircraft to push the input flange on the shaft end of the input pinion. It is used to push the input flange on the input pinion after the replacement activity of the gimbal input and the input seal, when damaged.
- Extractor, gimbal input used on aircraft to pull out the gimbal input from the input module assy. It is used to pull the gimbal input out of the input module assy, in order to remove the input seal when damaged.
- Screws extractor, input shaft used to facilitate MGB drive shaft disconnection, that can be difficult because of the three o-rings installed into the grooves at the end side, when installed. This three extractors permit the MGB drive shaft pulling from the engine spline, without possibles damages to the vital component.

10. WARNING AND SAFETY NOTES

10.1. WARNING NOTE







 Warning	<p>Use this equipment only for the purpose that it is designed for. Any other use can result in injury or serious material damage to the components.</p>
 Caution	
 Notice	<p>The Manual can never integrally replace the adequate competence of the user.</p>
 Warning	<p>Before and after each use of the equipment is necessary to perform the checks required. Do not operate with a tool damaged or partially completed, or partially assembled.</p>
 Caution	
 Notice	<p>This Manual provides guidelines and instructions of the equipment that are in addition to - but are not intended to replace or modify but only to integrate - any general or specific rule, regulation, decree or law that is in force in the place where the equipment is in use.</p>

Table 3 – Warning Note

10.2. SAFETY NOTES

Remember to wear protective overalls, safety shoes, protective gloves and glasses during all operational and maintenance phases.



Figure 4 – Safety Notes

11. STORAGE

The Tool shall be properly stored to provide protection from external weather conditions, damage and dirty particles.

The Kit shall be stored in the dedicated transportation box (part of the Kit).

Ensure that the tool parts are clean before storage.

11.1. LUBRICATION BEFORE STORAGE

Apply the Grease (MIL-PRF-23827) on all threaded parts before tool storage.

11.2. STORAGE CONFIGURATION

The tool has no particular storage configuration.

12. MAINTENANCE

NOTE: Correct regular maintenance allows preventing most faults and safeguards of tool performance in time, thereby making it last longer.

Every year carry out regular maintenance on a regular basis as detailed in this manual.

NOTE: Inspection intervals for tool parts placed inside in ready storage is 12 months.

12.1. CLEANING

Before inspection and after each use, carry out the cleaning of the tool components.

12.1.1. SPECIAL TOOLS, FIXTURE AND EQUIPMENT

No special tools, fixture and equipment are required for cleaning.

12.1.2. PART REQUIREMENTS

The parts to clean should be free from the moisture, emulsified water, soaps and metal shavings that can develop of corrosive acids.

They must also be free from wide grease and / or slosh deposits.

12.1.3. MANUAL CLEANING

- A. Clean thoroughly all metal surfaces with a clean lint-free cloth (Local supply) moistened with Cleaning Solvent (MIL-PRF-680C, Type II) to do general spot cleaning of large groups areas. For nylon or Teflon surfaces, the use of a biodegradable, water dilutable cleaning compound (MIL-PRF-87937 D, Type II) is required.
- B. Repeat the cleaning process again by means another clean lint-free cloth (Local supply).
- C. Drying.
 - Verify that the solvent should not be trapped in the cavity. Normally, the solvent evaporates at room temperature in a satisfactory manner.

12.2. CHECKS

Before and after each use or at least every year, carry out the check of kit component.

Before each use ensure that the manual is available to the operator, in the event of loss, request a copy to Leonardo Helicopters Division.

The Tool kit shall be submitted to following checks to guarantee the functionality.

All required checks shall be registered on CHECK RECORDS Table. Ref. *TLC_Table 1*

After each use of tool ensure to have registered the number of uses on HISTORICAL USES RECORD Table. Ref. *TLC_Table 2*

The Tool Log Card template contained in the Annex A of this manual can be replaced with any other log card template in use in the plant where the equipment is in use.

12.2.1. SPECIAL TOOLS, FIXTURE AND EQUIPMENT

No special tools, fixture and equipment are required for the checks.

12.2.2. VISUAL EXAMINATION

NOTE: Replace the parts that do not obey the inspection requirements.

Restore the marking of the parts that results damaged or not readable.

All required visual checks are listed on Table 4

PERIODICITY	CHECK TYPE	COMPONENTS	
BEFORE AND AFTER EVERY USE	VISUAL EXAMINATION	Evidence of impact;	All
		Crushing or stripping	All
		Cracks	All
		Dents	All
		Wear	All
		Distortions	All
		Corrosion	All
		Loose or defective attaching parts (warning flag)	All
		Unsticking of parts	Item 3, Nameplate, Figure 5 , page 15 Item 4, Nameplate, Figure 5 , page 15 Item 12, Plate, Figure 5 , page 15
		Damage to the threads	N.A.
		Marking	All
		Damage to the pins and to the shell	N.A.
Damage to the insulation sleeves and wires	N.A.		

Table 4 – Visual Check

12.2.3. PERIODICAL CHECKS

Not Applicable.

12.2.4. DIMENSIONAL CHECKS

Not Applicable.

12.2.5. SPECIAL CHECKS SUMMARY

Not Applicable.

12.3. REPLACEMENT

All the parts for which it is allowed the components replacement are listed in Paragraph 15.

12.3.1. REPLACEMENT PROCEDURES

The replacement of parts of the kit does not require specific procedures.

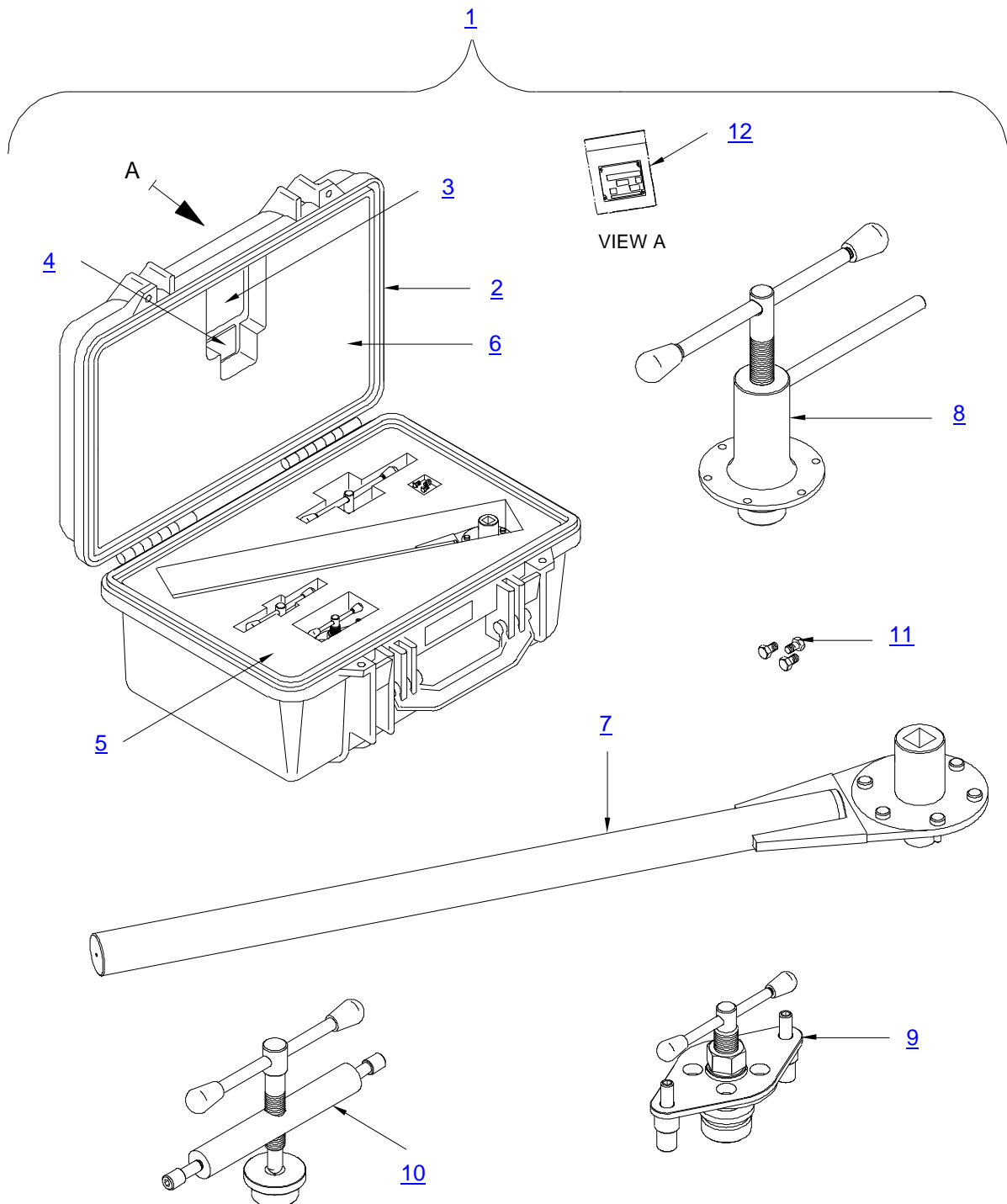
13. CALIBRATION

No Calibration is required.

14. SHELF LIFE

Not Applicable.

15. SPARE PARTS



3G6305G03531_3

Figure 5 – Spare Parts



GSE & TOOL USE AND MAINTENANCE MANUAL

Manual number:
MAN-3G6305G03531
REV. A

Pag. 17 of 18

ITEM	P/N	DESCRIPTION	Q.TY
1	3G6305G03531	TOOL KIT, INPUT FLANGE/GIMBAL REM/INST	REF
2	1650	CASE	1
3	3G0205G00169	NAMEPLATE	1
4	3G0205G00269	NAMEPLATE	1
5	3G6305G03551	FOAM	1
6	3G6305G03552	FOAM	1
7	3G6305G11331	WRENCH, MGB IMPUT PINION RING NUT REM/IN	1
8	3G6305G11631	PULLER, MGB IMPUT FLANGE REMOVAL	1
9	3G6305G11731	PUSHER, MGB IMPUT FLANGE INSTL	1
10	3G6305G11831	PULLER, MGB IMPUT GIMBAL REMOVAL	1
11	AN4DD3A	BOLT, MACHINE	3
12	A304A001A1	PLATE, IDENTIFICATION	1

Table 5 – Spare Parts

16. CE MARKING

No CE marking is required for the P/N 3G6305G03531 TOOL KIT, INPUT FLANGE / GIMBAL REPL..



GSE & TOOL
USE AND MAINTENANCE MANUAL

Manual number:
MAN-3G6305G03531
REV. A

Pag. 18 of 18

ANNEX A

TOOL LOG CARD



TOOL LOG CARD

ISSUE -/
Pag. 1 of 3

TOOL KIT P/N: [1]	TOOL KIT DESCRIPTION: [2]	TOOL KIT S/N: [3]
TOOL P/N: [4]	TOOL S/N: [5]	REMARKS: [6]

Section 1: CHECKS RECORD

[7] N° check	[8] DATE	[9] P/N TO CHECK	[10] CHECK	[11] FREQUENCY	[12] RESULT	[13] NOTE	CERTIFICATION [14]
							STAMP & SIGNATURE [15]
1							
2							
3							
4							
5							
6							
7							
8							
9							
10							
FINAL ACCEPTANCE [16]							
STAMP & SIGNATURE [17]						DATE [18]	

TLC_Table 1



TOOL LOG CARD

ISSUE -/-
Pag. 2 of 3

TOOL KIT P/N: [1]	TOOL KIT DESCRIPTION: [2]	TOOL KIT S/N: [3]
TOOL P/N: [4]	TOOL S/N: [5]	REMARKS: [6]

Section 2: HISTORICAL USES RECORD

[19] N°USE	[8] DATE	[6] NOTE	[13] CERTIFICATION	[19] N°USE	[8] DATE	[6] NOTE	[13] CERTIFICATION
			[14] STAMP & SIGNATURE				[14] STAMP & SIGNATURE
1				11			
2				12			
3				13			
4				14			
5				15			
6				16			
7				17			
8				18			
9				19			
10				20			

TLC_Table 2

LOG CARD FILLING INSTRUCTIONS

FIELD #	HEADER	NOTE
1	Part number of the tool Kit	
2	Tool Kit denomination	
3	Serial Number of the tool Kit	
4	Part Number of the tool (part of kit)	
5	Serial Number of the tool (if applicable)	
6	Indicate any details of the use	
7	Sequential number of check performed	
8	Date of the activity	
9	PN of tool or component (part of tool) checked/affected by issue	
10	Typology or description of checks /issue	
11	Check frequency	
12	Check result	
13	Check remarks	
14	Performance certification	
15	Stamp and signature of the personnel which performs the check	
16	Section related to the final approval	
17	Stamp and signature of the personnel which performs the final approval	
18	Date on which the final check was made	
19	Sequential number of performed used of the tool	