



**GSE & TOOL
USE AND MAINTENANCE MANUAL**

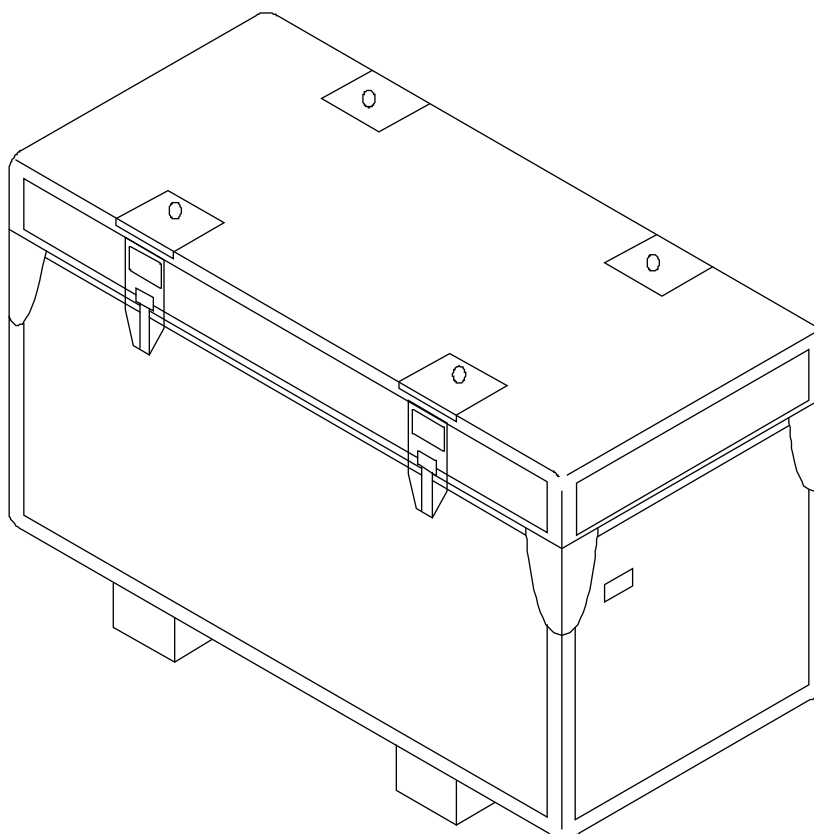
Manual number:
**MAN-3G0905G13131
REV. A**

Pag. 1 of 32

GSE & TOOL MANUAL

TITLE

**KIT, TOWING EQUIPMENT (TRIGON FIVE)
P/N 3G0905G13131**



	GSE & TOOL USE AND MAINTENANCE MANUAL	Manual number: MAN-3G0905G13131 REV. A
		Pag. 2 of 32

REVISION HISTORY

REV	CHANGE DESCRIPTION	DATE
A	First issue	04/10/2021

SUMMARY

SUMMARY	3
LIST OF TABLE	4
LIST OF FIGURE	4
1. SCOPE	6
1.1. APPLICABILITY	6
1.2. OBJECT	6
1.3. WARNING AND SAFETY INSTRUCTIONS	6
2. DOCUMENTS	7
2.1. APPLICABLE DOCUMENTS	7
2.2. ACRONYMS USED	7
3. DESCRIPTION	8
4. TOP ASSEMBLY DRAWINGS	8
5. IDENTIFICATION	8
6. OVERALL DIMENSIONS	9
7. WEIGHT	9
8. MAIN PARTS	10
9. MAIN FEATURES DESCRIPTION	11
10. WARNING AND SAFETY NOTES	12
10.1. WARNING NOTE	12
10.2. SAFETY NOTES	13
11. STORAGE	14
11.1. LUBRICATION BEFORE STORAGE	14
11.2. STORAGE CONFIGURATION	14
12. MAINTENANCE	14
12.1. CLEANING	14
12.1.1. SPECIAL TOOLS, FIXTURE AND EQUIPMENT	14
12.1.2. PART REQUIREMENTS	14
12.1.3. MANUAL CLEANING	14
12.2. CHECKS	15
12.2.1. SPECIAL TOOLS, FIXTURE AND EQUIPMENT	15
12.2.2. VISUAL EXAMINATION	15
12.2.3. PERIODICAL CHECKS	16
12.2.4. DIMENSIONAL CHECKS	16
12.2.5. SPECIAL CHECKS SUMMARY	16
12.3. REPLACEMENT	16
12.3.1. REPLACEMENT PROCEDURES	16

13.	CALIBRATION	16
14.	SHELF LIFE	16
15.	SPARE PARTS	17
16.	CE MARKING.....	31
	ANNEX A.....	32

LIST OF TABLE

Table 1 – Warning Instruction	6
Table 2 – Applicable Documents.....	7
Table 3 – Warning Note.....	12
Table 4 – Visual Check.....	15
Table 5 – Spare Parts.....	18
Table 6 – Spare Parts.....	19
Table 7 – Spare Parts.....	21
Table 8 – Spare Parts.....	22
Table 9 – Spare Parts.....	23
Table 10 – Spare Parts.....	24
Table 11 – Spare Parts.....	26
Table 12 – Spare Parts.....	27
Table 13 – Spare Parts.....	28
Table 14 – Spare Parts.....	29
Table 15 – Spare Parts.....	30

LIST OF FIGURE

<i>Figure 1 – Kit, Towing Equipment</i>	<i>8</i>
<i>Figure 2 – LHD Identification tag with P/N</i>	<i>8</i>
<i>Figure 3 – Main Parts</i>	<i>10</i>
<i>Figure 4 – Safety Notes.....</i>	<i>13</i>
<i>Figure 5 – Spare Parts</i>	<i>17</i>
<i>Figure 6 – Spare Parts</i>	<i>19</i>
<i>Figure 7 – Spare Parts</i>	<i>20</i>
<i>Figure 8 – Spare Parts</i>	<i>22</i>
<i>Figure 9 – Spare Parts</i>	<i>23</i>
<i>Figure 10 – Spare Parts</i>	<i>24</i>
<i>Figure 11 – Spare Parts</i>	<i>25</i>

	GSE & TOOL USE AND MAINTENANCE MANUAL	Manual number: MAN-3G0905G13131 REV. A
		Pag. 5 of 32

<i>Figure 12 – Spare Parts</i>	27
<i>Figure 13 – Spare Parts</i>	28
<i>Figure 14 – Spare Parts</i>	29
<i>Figure 15 – Spare Parts</i>	30

1. SCOPE

1.1. APPLICABILITY

The contents of this document are meant to provide information on the P/N 3G0905G13131 KIT, TOWING EQUIPMENT (TRIGON FIVE).

1.2. OBJECT

The object of this document is to describe the AGE and its components, its main features and it will also provide all needed maintenance requirements to keep in service the P/N 3G0905G13131 KIT, TOWING EQUIPMENT (TRIGON FIVE).

1.3. WARNING AND SAFETY INSTRUCTIONS

A number of symbols are used throughout this document to indicate information to which the user should pay attention to. These are indicated below along with the specific meaning.




 Warning	...Indicates a danger that might arise from a product and might result in severe injuries or even death, if no precautions are taken.
 Caution	... Indicates a potentially dangerous situation, which might result injury or damage to the equipment.
 Notice	...Indicates a note providing information to help the reader during the procedure.

Table 1 – Warning Instruction

	GSE & TOOL USE AND MAINTENANCE MANUAL	Manual number: MAN-3G0905G13131 REV. A
		Pag. 7 of 32

2. DOCUMENTS

2.1. APPLICABLE DOCUMENTS

The following table lists the applicable documents

REF	REFERENCE OF DOCUMENT	TITLE
N.A.	N.A.	N.A.

Table 2 – Applicable Documents

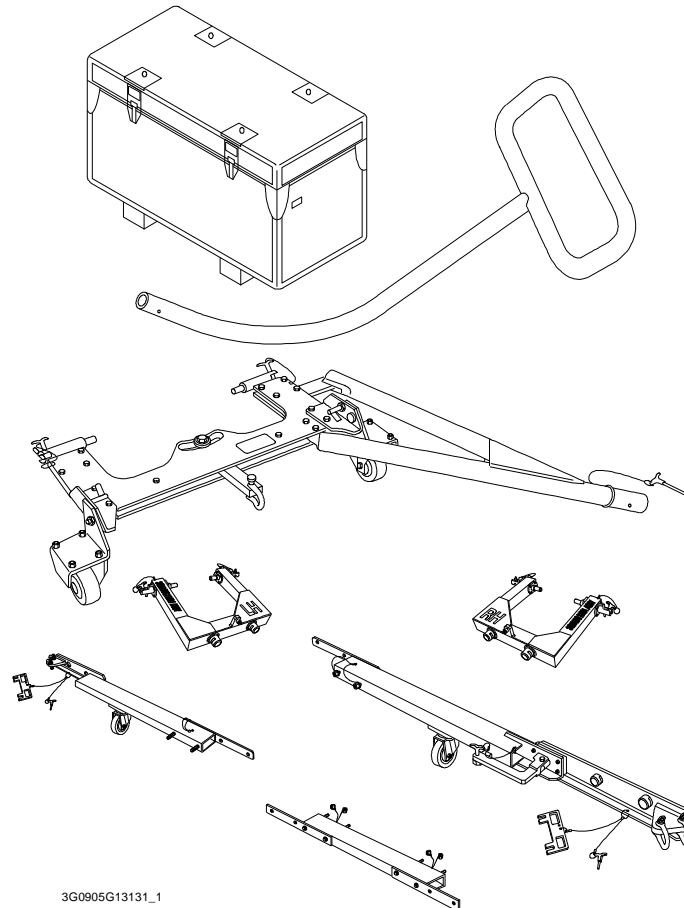
2.2. ACRONYMS USED

The main acronyms used in this document are listed below:

LHD	Leonardo Helicopter Division
HC	Helicopter
P/N	Part Number
S/N	Serial Number
N.A.	Not Applicable
FWD	Forward
LH	Left Hand
RH	Right Hand
NLG	Nose Landing Gear
MLG	Main Landing Gear

3. DESCRIPTION

This tool kit is the interface between the winches system of the boat and the helicopter, and it is necessary to move forward and aft the helicopter on the upper deck of the boat.



3G0905G13131_1

Figure 1 – Kit, Towing Equipment

4. TOP ASSEMBLY DRAWINGS

Refer to P/N 3G0905G13131 KIT, TOWING EQUIPMENT (TRIGON FIVE).

5. IDENTIFICATION

The tool identification P/N is marked on each case on the LHD identification tag.

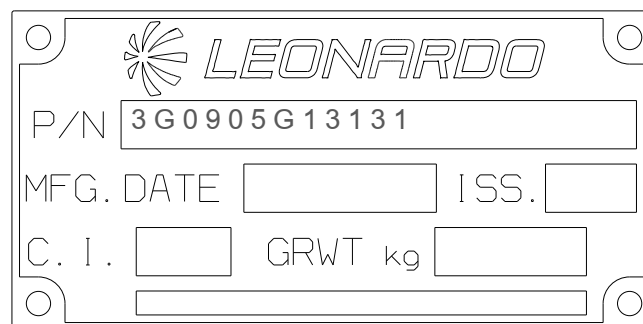


Figure 2 – LHD Identification tag with P/N



GSE & TOOL USE AND MAINTENANCE MANUAL

Manual number:
MAN-3G0905G13131
REV. A

Pag. 9 of 32

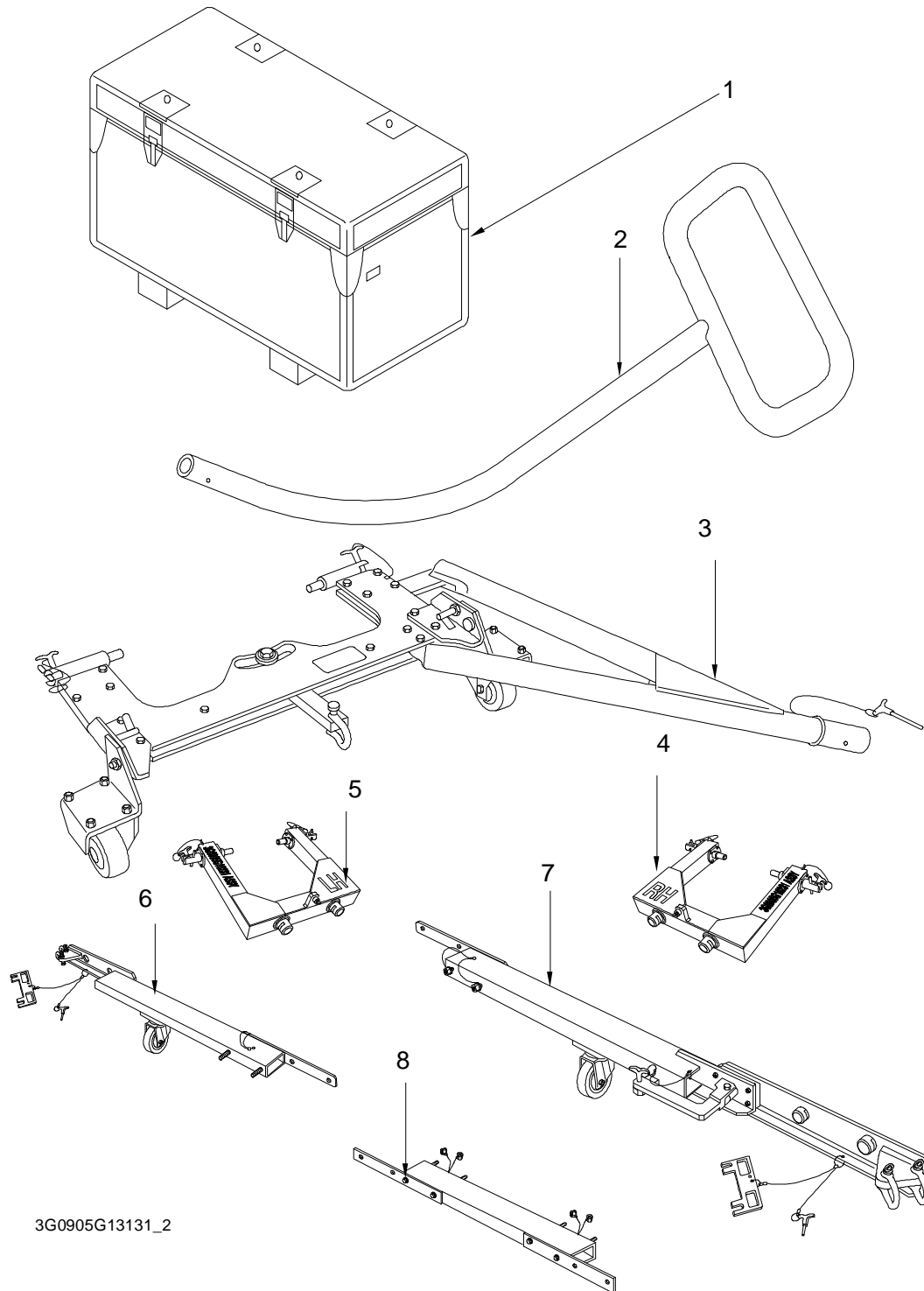
6. OVERALL DIMENSIONS

- Length: 1880 mm
- Width: 780 mm
- Height: 860 mm

7. WEIGHT

- Total Weight: 180 kg

8. MAIN PARTS



3G0905G13131_2

Figure 3 – Main Parts

	GSE & TOOL USE AND MAINTENANCE MANUAL	Manual number: MAN-3G0905G13131 REV. A
		Pag. 11 of 32

The main parts of the KIT, TOWING EQUIPMENT (TRIGON FIVE) are:

1 Trigon 5 Tool Kit Case, Assy

NLG INTERFACE TOOL, ASSY

2 The Tow Handle

3 The Nose Landing Gear Adapter

MLG INTERFACE TOOL, ASSY

4 The Right Main Landing Gear Adapter

5 The Left Main Landing Gear Adapter

6 The Right Junction Rod

7 The Left Junction Rod

8 The Junction Rods Coupling

9. MAIN FEATURES DESCRIPTION

Item 1 (ref [Figure 3](#)): Trigon 5 Tool Kit Case, Assy

This is the case that contains all the items.

Item 2 (ref [Figure 3](#)): Tow handle

This tool is installed on the "Trigon 5" nose landing gear adapter. It is used to turn the nose landing gear in left and right position when the helicopter is moved on the upper deck of the boat with the winches system.

Item 3 (ref [Figure 3](#)): Nose landing gear adapter

This tool is the interface between the forward winches system of the boat and the nose landing gear of the helicopter. It is used to move forward and direct the helicopter on the upper deck of the boat when towed by "Trigon 5" winches system.

Item 4 (ref [Figure 3](#)): Right main landing gear adapter

This tool is used as the interface between the aft winches system of the boat and the right main landing gear of the helicopter. It is used to move aft the helicopter on the upper deck of the boat and it is the attaching point to connect it with the junction rod assy and the left main landing gear adapter.

Item 5 (ref [Figure 3](#)): Left main landing gear adapter

This tool is used as the interface between the aft winches system of the boat and the left main landing gear of the helicopter. It is used to move aft the helicopter on the upper deck of the boat and it is the attaching point to connect it with the junction rod assy and the right main landing gear adapter.

Item 6 (ref [Figure 3](#)): Right junction rod

This tool is used as the interface between the right main landing gear adapter and the junction rods coupling. It is used during AW139 helicopter towing by using the "Trigon 5" winches system in order to prevent abnormal load of the right main landing gear.

Item 7 (ref [Figure 3](#)): Left junction rod

This tool is used as the interface between the left main landing gear adapter and the junction rods coupling. It is used during AW139 helicopter towing by using the "Trigon 5" winches system in order to prevent abnormal load of the left main landing gear.

Item 8 (ref [Figure 3](#)): Junction rods coupling

This tool is used as the interface between the left main landing gear adapter and the right main landing gear adapter. It is used during AW139 helicopter towing by using the "Trigon 5" winches system in order to prevent abnormal load of the main landing gear.

10. WARNING AND SAFETY NOTES

10.1. WARNING NOTE







 Warning	<p>Use this equipment only for the purpose that it is designed for. Any other use can result in injury or serious material damage to the components.</p>
 Caution	
 Notice	<p>The Manual can never integrally replace the adequate competence of the user.</p>
 Warning	<p>Before and after each use of the equipment is necessary to perform the checks required. Do not operate with a tool damaged or partially completed, or partially assembled.</p>
 Caution	
 Notice	<p>This Manual provides guidelines and instructions of the equipment that are in addition to - but are not intended to replace or modify but only to integrate - any general or specific rule, regulation, decree or law that is in force in the place where the equipment is in use.</p>

Table 3 – Warning Note

10.2. SAFETY NOTES

Remember to wear protective overalls, safety shoes, protective gloves and glasses during all operational and maintenance phases.

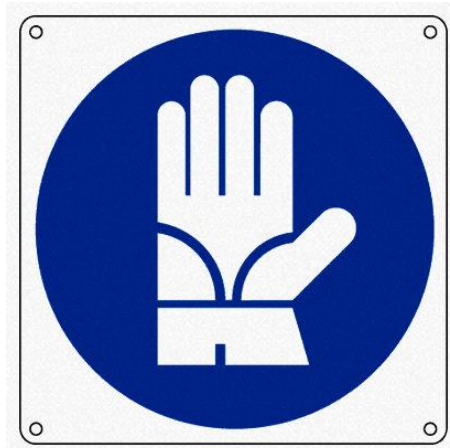


Figure 4 – Safety Notes

	GSE & TOOL USE AND MAINTENANCE MANUAL	Manual number: MAN-3G0905G13131 REV. A
		Pag. 14 of 32

11. STORAGE

The Tool shall be properly stored to provide protection from external weather conditions, damage and dirty particles.

The Kit shall be stored in the dedicated transportation box (part of the Kit).

Ensure that the tool parts are clean before storage.

11.1. LUBRICATION BEFORE STORAGE

N.A.

11.2. STORAGE CONFIGURATION

The tool has no particular storage configuration.

12. MAINTENANCE

NOTE: Correct regular maintenance allows preventing most faults and safeguards of tool performance in time, thereby making it last longer.

Every year carry out regular maintenance on a regular basis as detailed in this manual.

NOTE: Inspection intervals for tool parts placed inside in ready storage is 12 months.

12.1. CLEANING

Before inspection and after each use, carry out the cleaning of the tool components.

12.1.1. SPECIAL TOOLS, FIXTURE AND EQUIPMENT

No special tools, fixture and equipment are required for cleaning.

12.1.2. PART REQUIREMENTS

The parts to clean should be free from the moisture, emulsified water, soaps and metal shavings that can develop of corrosive acids.

They must also be free from wide grease and / or slosh deposits.

12.1.3. MANUAL CLEANING

- A. Clean thoroughly all metal surfaces with a clean lint-free cloth (Local supply) moistened with Cleaning Solvent (MIL-PRF-680C, Type II) to do general spot cleaning of large groups areas. For nylon or Teflon surfaces, the use of a biodegradable, water dilutable cleaning compound (MIL-PRF-87937 D, Type II) is required.
- B. Repeat the cleaning process again by means another clean lint-free cloth (Local supply).
- C. Drying.
 - Verify that the solvent should not be trapped in the cavity. Normally, the solvent evaporates at room temperature in a satisfactory manner.

12.2. CHECKS

Before and after each use or at least every year, carry out the check of kit component.

Before each use ensure that the manual is available to the operator, in the event of loss, request a copy to Leonardo Helicopters Division.

The Tool kit shall be submitted to following checks to guarantee the functionality.

All required checks shall be registered on CHECK RECORDS Table. Ref. *TLC_Table 1*

After each use of tool ensure to have registered the number of uses on HISTORICAL USES RECORD Table. Ref. *TLC_Table 2*

The Tool Log Card template contained in the Annex A of this manual can be replaced with any other log card template in use in the plant where the equipment is in use.

12.2.1. SPECIAL TOOLS, FIXTURE AND EQUIPMENT

No special tools, fixture and equipment are required for the checks.

12.2.2. VISUAL EXAMINATION

NOTE: Replace the parts that do not obey the inspection requirements.

Restore the marking of the parts that results damaged or not readable.

All required visual checks are listed on Table 4.

PERIODICITY	CHECK TYPE	COMPONENTS	
BEFORE AND AFTER EVERY USE	VISUAL EXAMINATION	Evidence of impact;	All
		Crushing or stripping	All
		Cracks	All
		Dents	All
		Wear	All
		Distortions	All
		Corrosion	All
		Loose or defective attaching parts (warning flag)	All
		Unsticking of parts	All glued parts.
		Damage to the threads	All threaded STD parts.
		Marking	All

Table 4 – Visual Check



GSE & TOOL USE AND MAINTENANCE MANUAL

Manual number:
MAN-3G0905G13131
REV. A

Pag. 16 of 32

12.2.3. PERIODICAL CHECKS

Not Applicable.

12.2.4. DIMENSIONAL CHECKS

Not Applicable.

12.2.5. SPECIAL CHECKS SUMMARY

Not Applicable.

12.3. REPLACEMENT

All the parts for which it is allowed the components replacement are listed in Paragraph 15.

12.3.1. REPLACEMENT PROCEDURES

The replacement of parts of the kit does not require specific procedures.

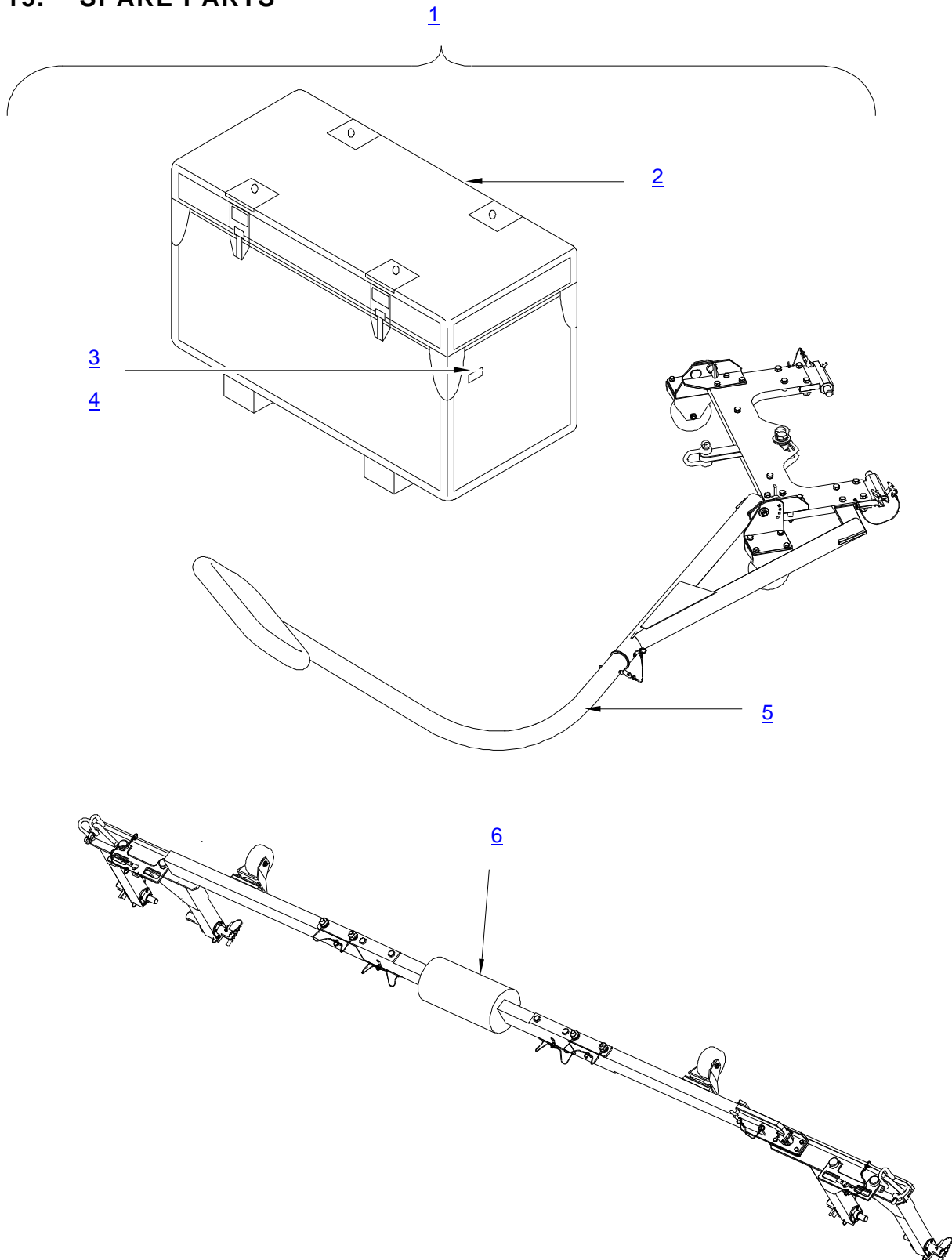
13. CALIBRATION

No Calibration is required.

14. SHELF LIFE

Not Applicable.

15. SPARE PARTS



3G0905G13131_3

Figure 5 – Spare Parts



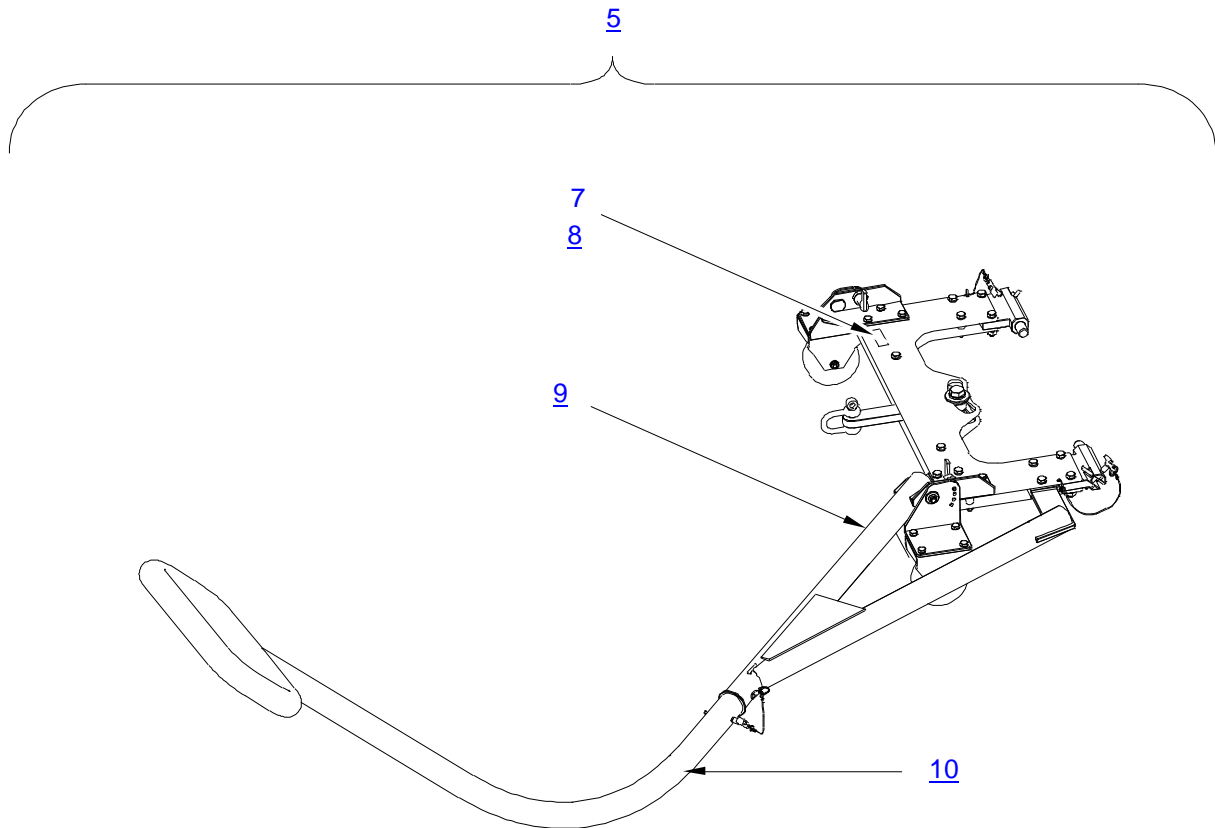
GSE & TOOL USE AND MAINTENANCE MANUAL

Manual number:
MAN-3G0905G13131
REV. A

Pag. 18 of 32

ITEM	P/N	DESCRIPTION	Q.TY
1	3G0905G13131	KIT, TOWING EQUIPMENT (TRIGON FIVE)	REF.
2	3G0905G13231	TRIGON 5 TOOL KIT CASE ASSY	1
3	A304A001A1	PLATE, IDENTIFICATION	1
4	NAS1398C4-3	RIVET BLIND PROTRUDING	4
5	3G0905G13331	NLG INTERFACE TOOL, ASSY (For Breakdown ref. to Figure 6 and Table 6)	1
6	3G0905G13431	MLG INTERFACE TOOL, ASSY (For Breakdown ref. to Figure 9 and Table 9)	1

Table 5 – Spare Parts

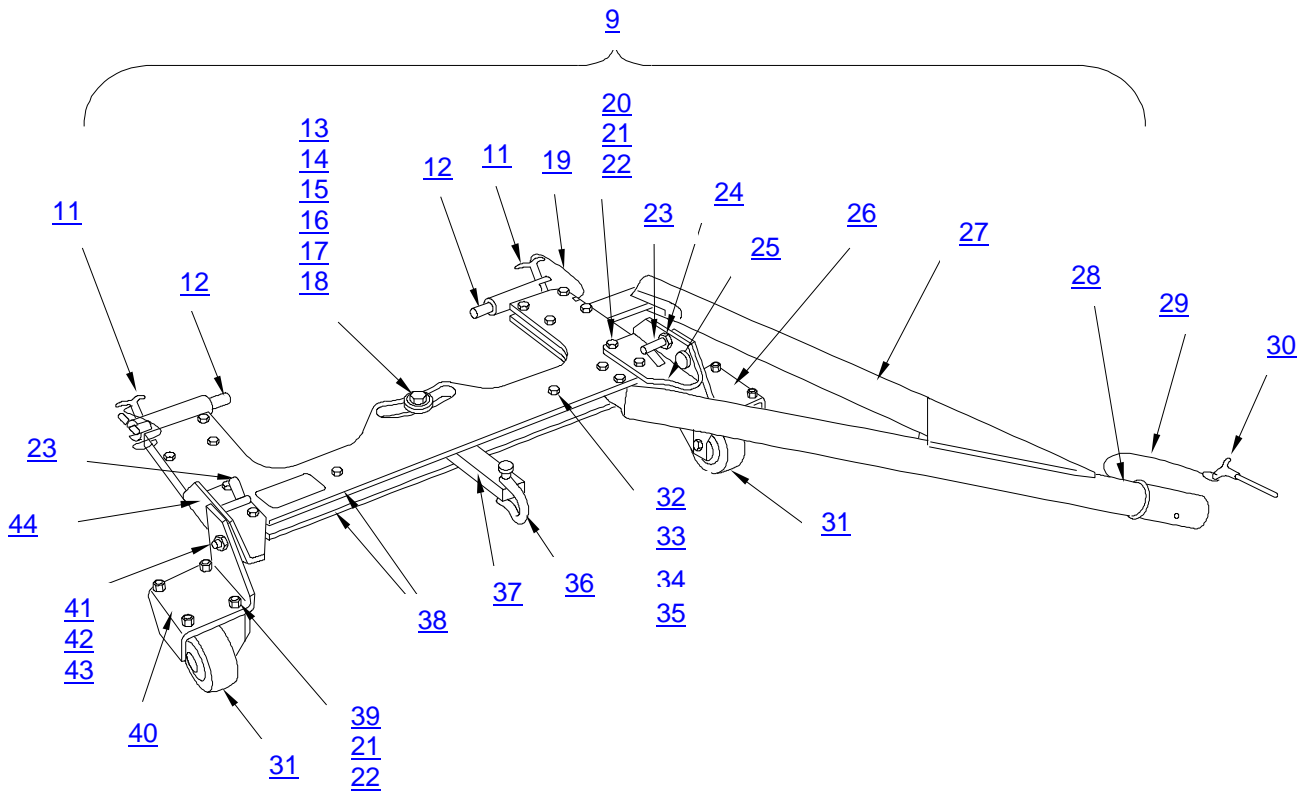


3G0905G13131_4

Figure 6 – Spare Parts

ITEM	P/N	DESCRIPTION	Q.TY
5	3G0905G13331	NLG INTERFACE TOOL, ASSY	REF.
7	A304A001A1	PLATE, IDENTIFICATION	1
8	NAS1398C4-3	RIVET BLIND PROTRUDING	4
9	3G0905G13631	NLG FORK, ASSY (For Breakdown ref. to Figure 7 and Table 7)	1
10	3G0905G13531	RING HANDLE, ASSY	1

Table 6 – Spare Parts



3G0905G13131_5

Figure 7 – Spare Parts

ITEM	P/N	DESCRIPTION	Q.TY
9	3G0905G13631	NLG FORK, ASSY	REF.
11	NAS1334C2C14D	PIN, QUICK RELEASE	2
12	3G0905G13831	PIN, ASSY (For Breakdown ref. to Figure 8 and Table 8)	2
13	AN9C22A	BOLT, MACHINE	1
14	3G0905G15051	BUSH	2
15	3G0905G14951	WASHER	2
16	AN315C9R	NUT, PLAIN, HEXAGON	1
17	NAS1149C0932R	WASHER, FLAT	1
18	MS35338-49	WASHER, LOCK	1
19	AS44445D150D	CORD ASSEMBLY, FIBROUS	2
20	AN5C16A	BOLT, MACHINE	6
21	NAS1149C0532R	WASHER, FLAT	28
22	AN315C5R	NUT, PLAIN, HEXAGON	14
23	UNI5589-A2-M16	NUT	2
24	EH2212.326	STOP RETRABLE	2
25	3G0905G14651	LH SUPPORT	1
26	3G0905G14751	LH HINGED SUPPORT	1
27	3G0905G15131	TRIANGULAR JOINT	1
28	NAS1398C5-4	RIVET, BLIND	1
29	AS44445D150K	CORD ASSEMBLY, FIBROUS	1
30	NAS1334C2C20D	PIN, QUICK RELEASE	1
31	1NHX100SFX0	WHEEL	2
32	AN6C15A	BOLT, MACHINE	12
33	NAS1149C0632R	WASHER, FLAT	24
34	3G0905G15251	SLEEVE	10
35	AN315C6R	NUT, PLAIN, HEXAGON	12
36	AGRLUX12	WHIM TO U	1
37	3G0905G14851	ROD	1
38	3G0905G13751	PLATE	2
39	AN5C5A	BOLT, MACHINE	8
40	3G0905G14351	RH HINGED SUPPORT	1
41	3G0905G14451	HINGE PIN	2
42	3G0905G14551	WASHER	2
43	MS21042-6	NUT, SELF-LOCKING EXTENDED WASHER, HEXAGON	2
44	3G0905G14251	RH SUPPORT	1

Table 7 – Spare Parts

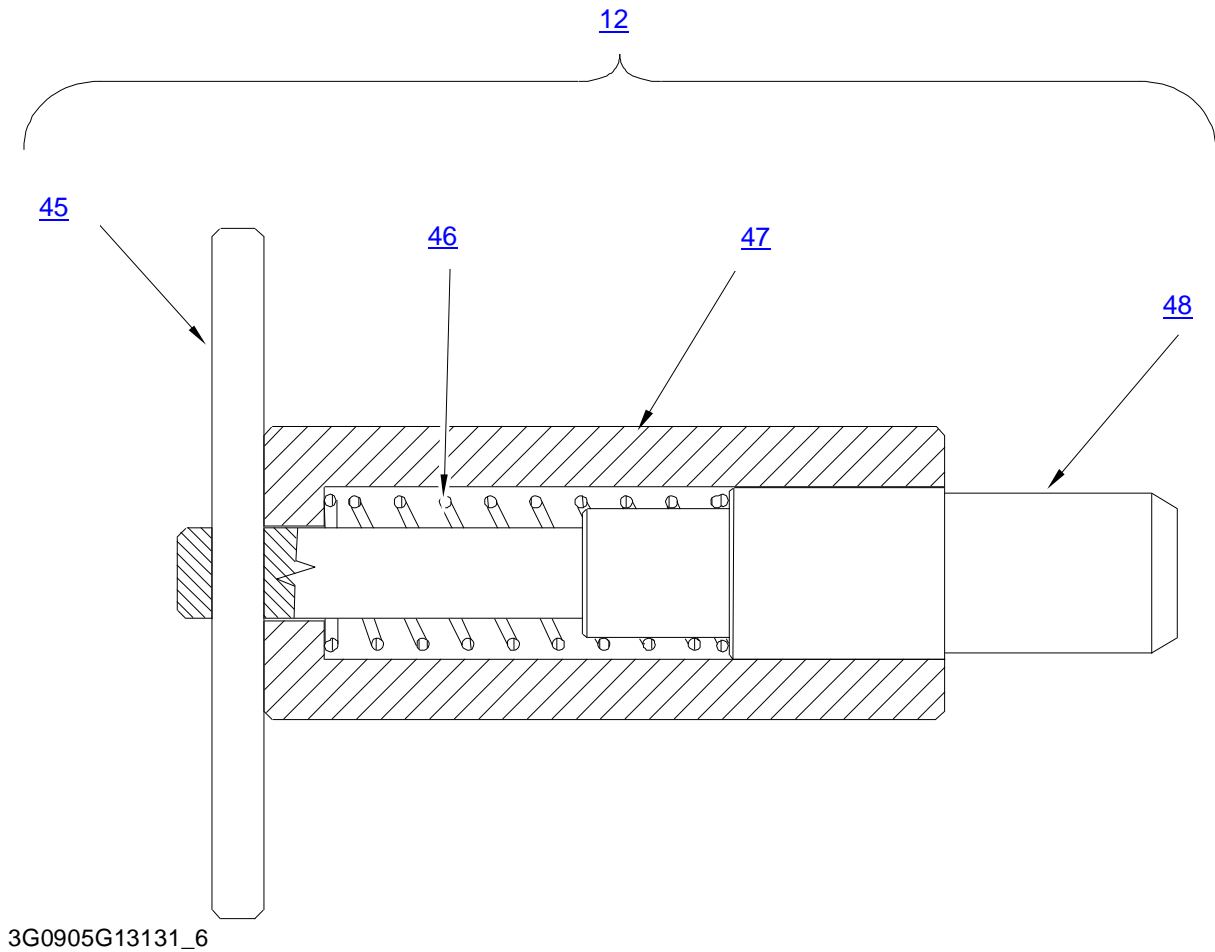
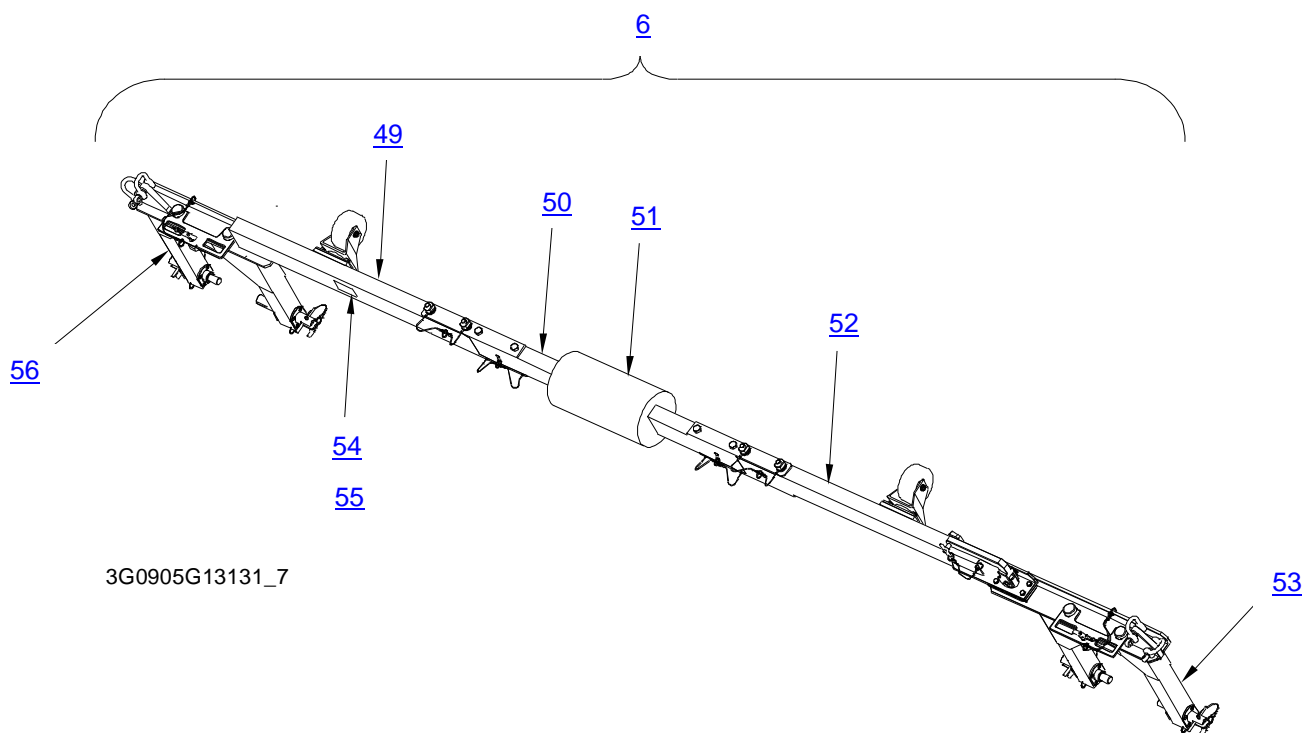


Figure 8 – Spare Parts

ITEM	P/N	DESCRIPTION	Q.TY
12	3G0905G13831	PIN, ASSY	REF.
45	3G0905G14151	HANDLE	1
46	C07200552000S	SPRING	1
47	3G0905G13951	GUIDE	1
48	3G0905G14051	PIN	1

Table 8 – Spare Parts

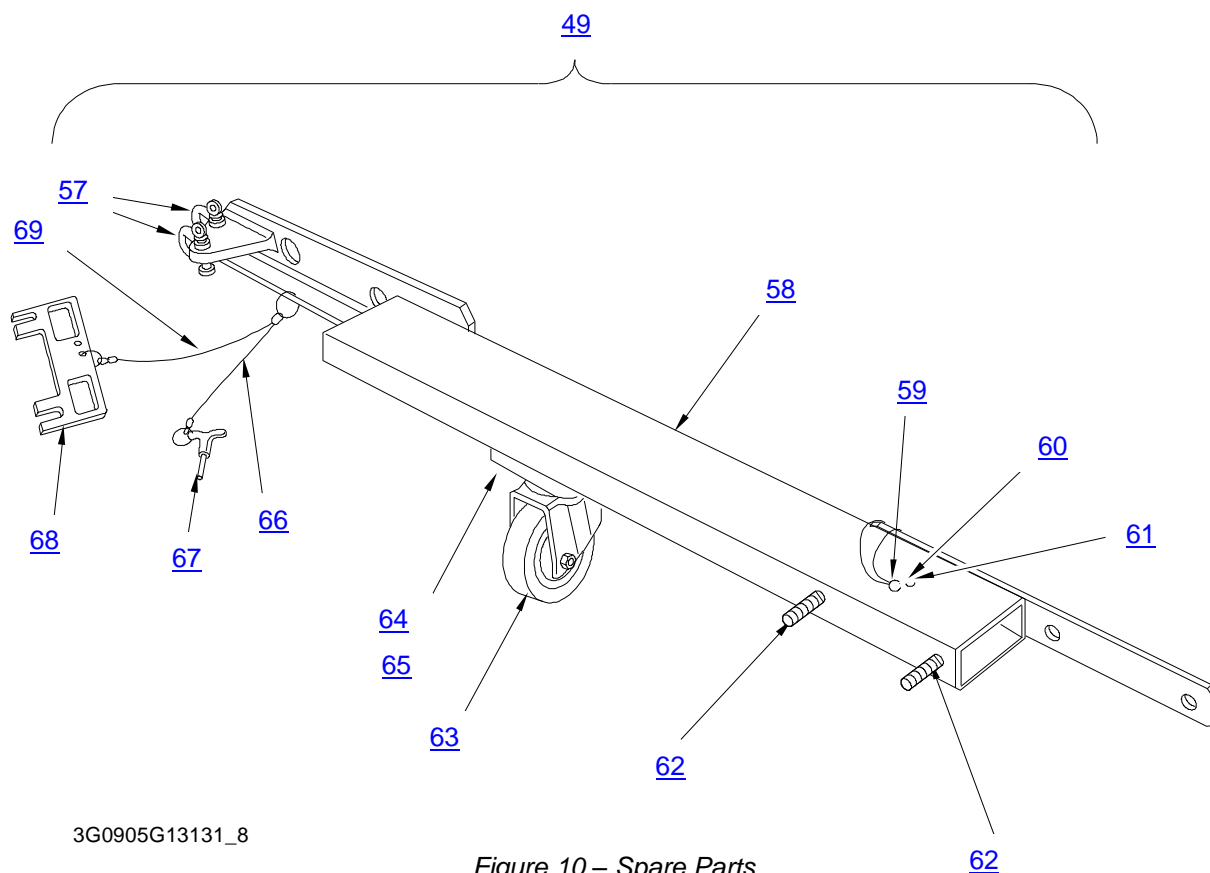


3G0905G13131_7

Figure 9 – Spare Parts

ITEM	P/N	DESCRIPTION	Q.TY
6	3G0905G13431	MLG INTERFACE TOOL, ASSY	REF.
49	3G0905G17831	TRACTION BOOM LH, ASSY (For Breakdown ref. to Figure 10 and Table 10)	1
50	3G0905G17631	COUPLING, ASSY	1
51	3G0905G18131	PROTECTION	1
52	3G0905G16431	TRACTION BOOM RH, ASSY (For Breakdown ref. to Figure 11 and Table 11)	1
53	3G0905G16231	MLG ADAPTER TOOL RH, ASSY (For Breakdown ref. to Figure 12 and Table 12)	1
54	A304A001A1	PLATE, IDENTIFICATION	1
55	NAS1398C4-3	RIVET BLIND PROTRUDING	4
56	3G0905G15331	MLG ADAPTER TOOL LH, ASSY (For Breakdown ref. Figure 15 to and Table 15)	1

Table 9 – Spare Parts



3G0905G13131_8

Figure 10 – Spare Parts

ITEM	P/N	DESCRIPTION	Q.TY
49	3G0905G17831	TRACTION BOOM LH, ASSY	REF.
57	AGRLUX12	WHIM TO U	2
58	3G0905G17931	TRACTION BOOM	1
59	AS63401-08	RING SPLIT	1
60	AS41090C	CHAIN FASTENER, ANGLE	1
61	NAS1398C5	4 RIVET, BLIND	1
62	3G0905G17331	NUT, ASSY	2
63	1NHX100SGX0	WHEEL	1
64	AN5C5A	BOLT, MACHINE	4
65	NAS1149C0463R	WASHER, FLAT	4
66	AS44445D150D	CORD ASSEMBLY, FIBROUS	2
67	MS17985C420	PIN, QUICK RELEASE	1
68	3G0905G15951	LOCKING DEVICE	1
69	AS44445C150D	CORD ASSEMBLY, FIBROUS	1

Table 10 – Spare Parts

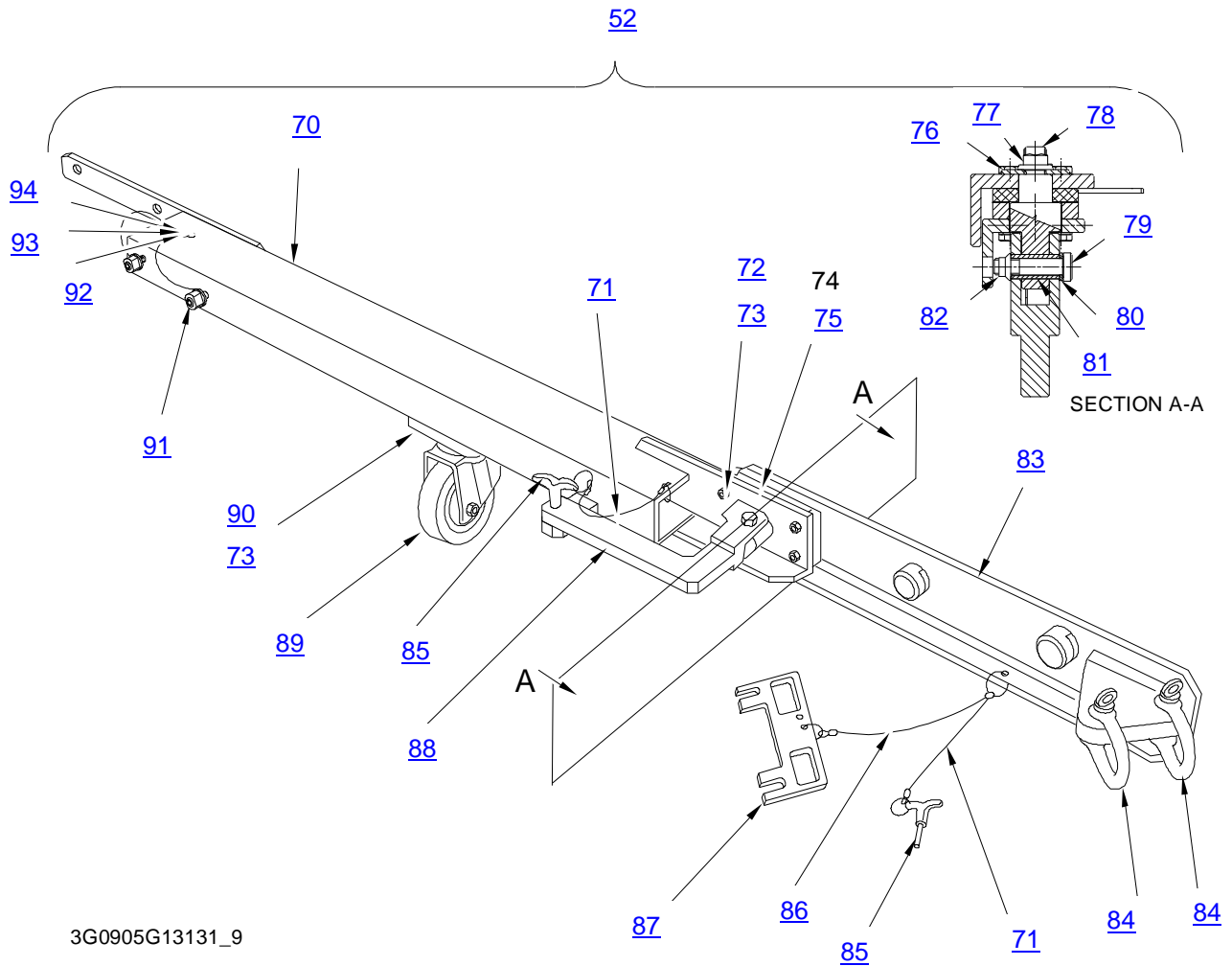


Figure 11 – Spare Parts



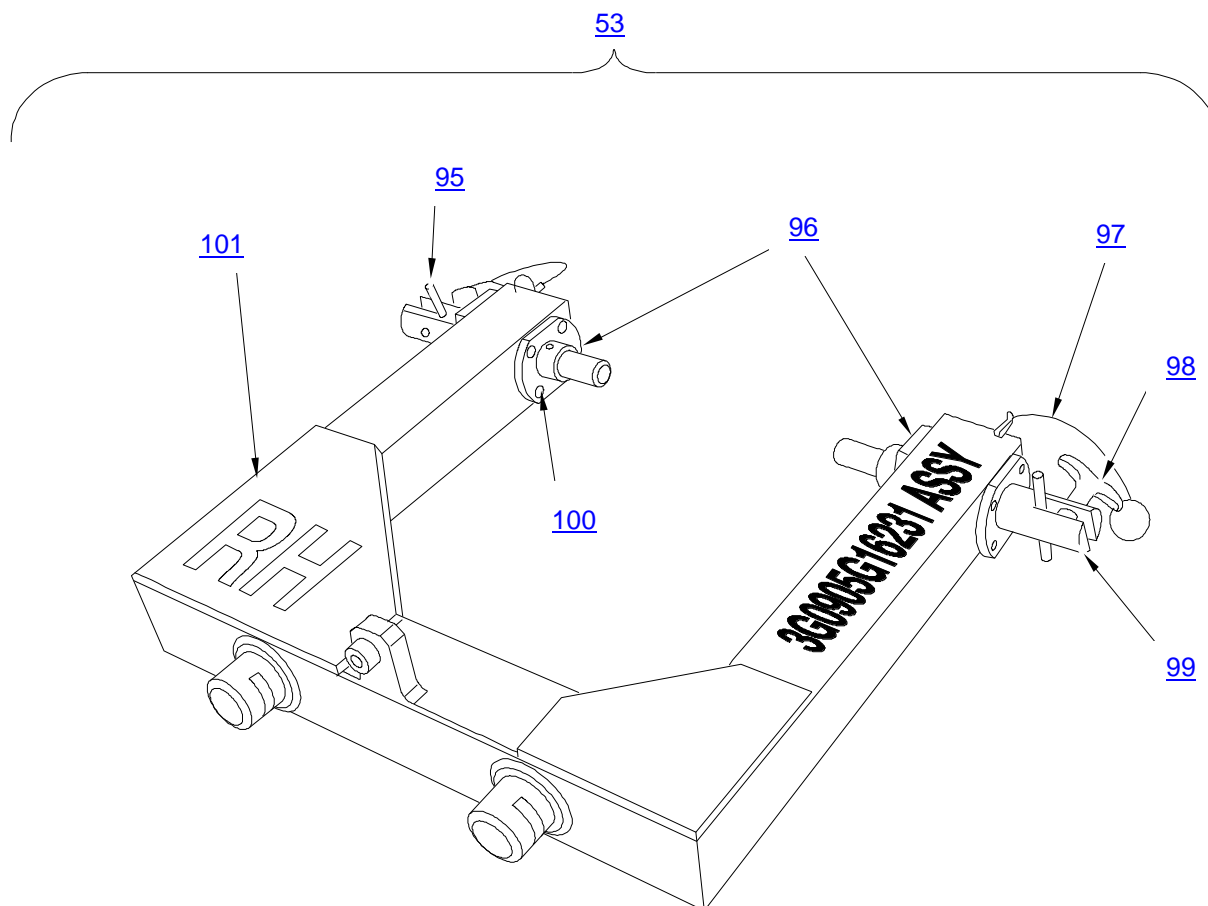
GSE & TOOL USE AND MAINTENANCE MANUAL

Manual number:
MAN-3G0905G13131
REV. A

Pag. 26 of 32

ITEM	P/N	DESCRIPTION	Q.TY
52	3G0905G16431	TRACTION BOOM RH, ASSY	REF.
70	3G0905G16731	ADJUSTABLE BOOM RH	1
71	AS44445D150D	CORD ASSEMBLY,FIBROUS	2
72	AN4C5A	BOLT, MACHINE	8
73	NAS1149C0463R	WASHER, FLAT	12
74	3G0905G16551	NOTCHED BLOCK	1
75	3G0905G16651	ADJUSTABLE NOTCHED BLOCK	1
76	3G0905G17051	WASHER	1
77	NAS1291C8	NUT, SELF-LOCKING, HEX	1
78	3G0905G17151	HINGE PIN	1
79	AN6C14A	BOLT, MACHINE	1
80	AN960PD616	WASHER, FLAT	1
81	3G0905G17251	BUSH	1
82	MS21043-6	NUT, SLFLKG, EXTENDED WASHER, HEXAGON	1
83	3G0905G16831	ANCHOR PLATE	1
84	AGRLUX12	WHIM TO U	2
85	MS17985C420	PIN, QUICK RELEASE	2
86	AS44445C150D	CORD ASSEMBLY,FIBROUS	1
87	3G0905G15951	LOCKING DEVICE	1
88	3G0905G16951	HANDLE	1
89	1NHX100SGX0	WHEEL	1
90	AN5C5A	BOLT, MACHINE	4
91	3G0905G17331	NUT, ASSY	2
92	AS41090C	CHAIN FASTENER, ANGLE	1
93	AS63401-08	RING SPLIT	1
94	NAS1398C5-4	RIVET, BLIND	1

Table 11 – Spare Parts

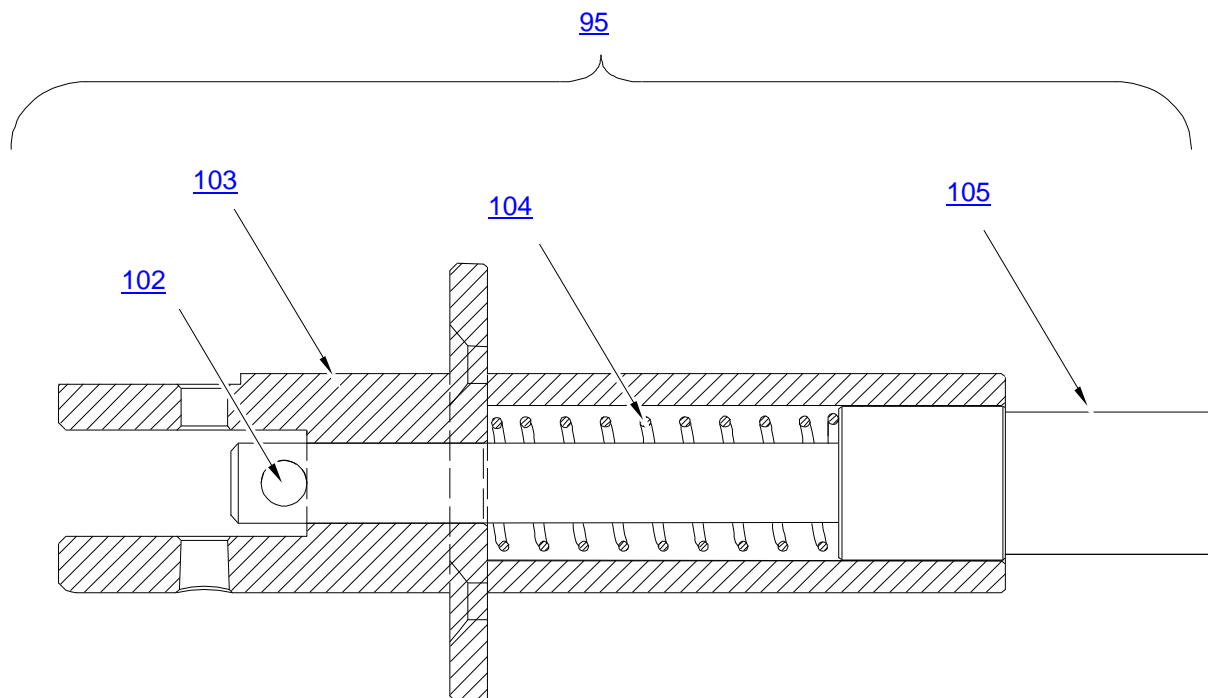


3G0905G13131_10

Figure 12 – Spare Parts

ITEM	P/N	DESCRIPTION	Q.TY
53	3G0905G16231	MLG ADAPTER TOOL RH, ASSY	REF.
95	3G0905G16031	RETRACTABLE PIN INNER, ASSY (For Breakdown ref. to Figure 13 and Table 13)	1
96	3G0905G15551	FLANGE	2
97	AS44445D150D	CORD ASSEMBLY, FIBROUS	2
98	NAS1334A2C12D	PIN, QUICK RELEASE	2
99	3G0905G15631	RETRACTABLE PIN OUTER, ASSY (For Breakdown ref. to Figure 14 and Table 14)	1
100	MS24693C274	SCREW, MACHINE	16
101	3G0905G16331	FORK ADAPTER RH	1

Table 12 – Spare Parts

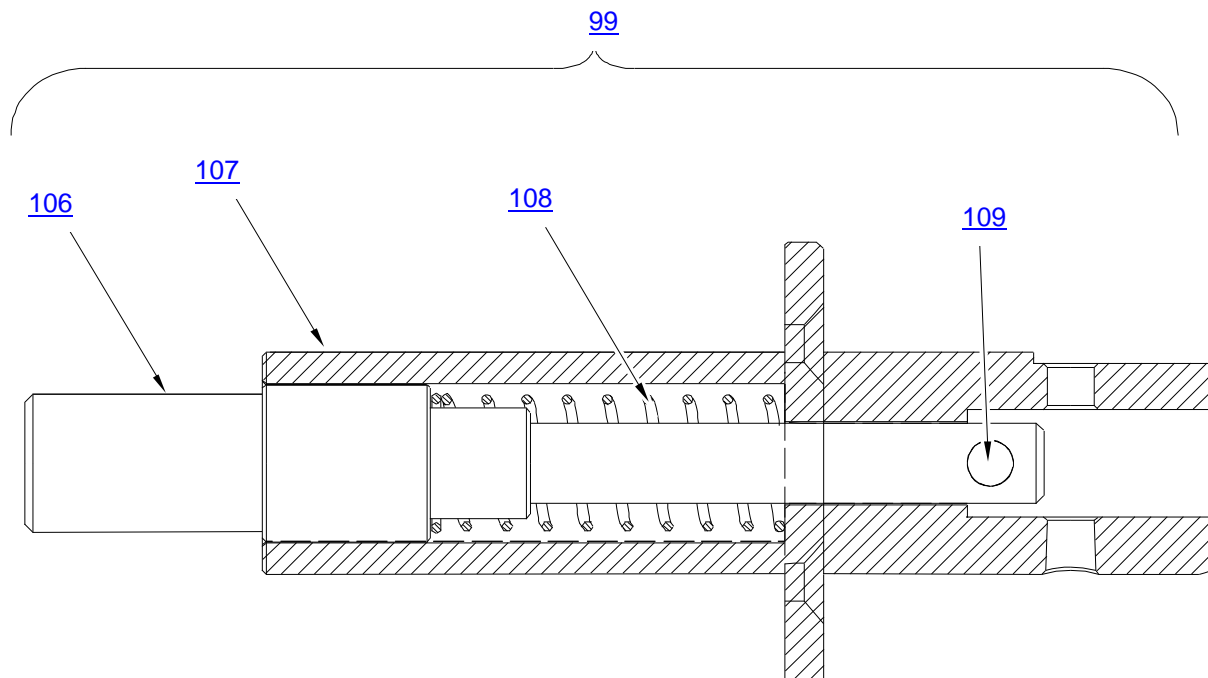


3G0905G13131_11

Figure 13 – Spare Parts

ITEM	P/N	DESCRIPTION	Q.TY
95	3G0905G16031	RETRACTABLE PIN INNER, ASSY	REF.
102	3G0905G14151	HANDLE	1
103	3G0905G15751	BARREL BRACKET	1
104	C07200552000M	SPRING	1
105	3G0905G16151	INNER PIN	1

Table 13 – Spare Parts

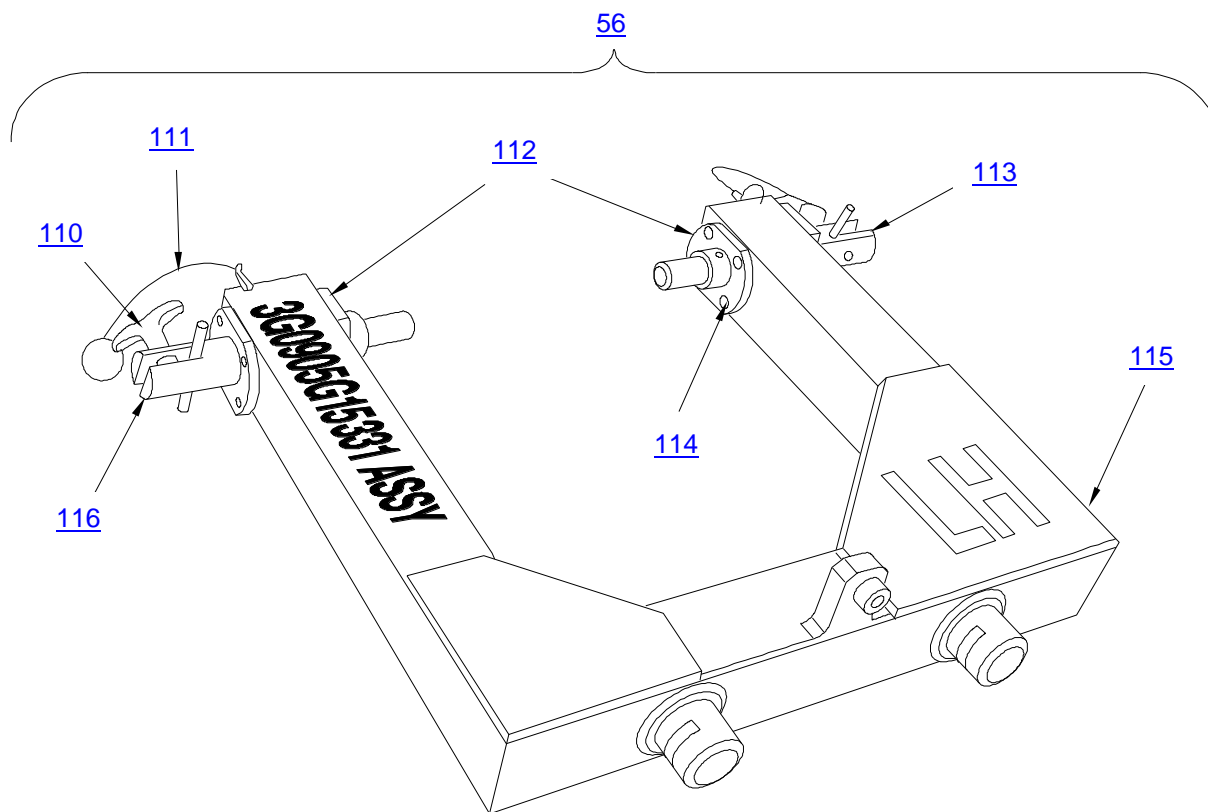


3G0905G13131_12

Figure 14 – Spare Parts

ITEM	P/N	DESCRIPTION	Q.TY
99	3G0905G15631	RETRACTABLE PIN OUTER, ASSY	REF.
106	3G0905G15851	OUTER PIN	1
107	3G0905G15751	BARREL BRACKET	1
108	C07200552000M	SPRING	1
109	3G0905G14151	HANDLE	1

Table 14 – Spare Parts



3G0905G13131_13

Figure 15 – Spare Parts

ITEM	P/N	DESCRIPTION	Q.TY
56	3G0905G15331	MLG ADAPTER TOOL LH, ASSY	REF.
110	NAS1334A2C12D	PIN, QUICK RELEASE	2
111	AS44445D150D	CORD ASSEMBLY, FIBROUS	2
112	3G0905G15551	FLANGE	2
113	3G0905G16031	RETRACTABLE PIN INNER, ASSY (For Breakdown ref. to Figure 13 and Table 13)	1
114	MS24693C274	SCREW, MACHINE	16
115	3G0905G15431	FORK ADAPTER LH	1
116	3G0905G15631	RETRACTABLE PIN OUTER, ASSY (For Breakdown ref. to Figure 14 and Table 14)	1

Table 15 – Spare Parts

	GSE & TOOL USE AND MAINTENANCE MANUAL	Manual number: MAN-3G0905G13131 REV. A
		Pag. 31 of 32

16. CE MARKING

No CE marking is required for the P/N 3G0905G13131 KIT, TOWING EQUIPMENT (TRIGON FIVE).



GSE & TOOL
USE AND MAINTENANCE MANUAL

Manual number:
MAN-3G0905G13131
REV. A

Pag. 32 of 32

ANNEX A

TOOL LOG CARD



TOOL LOG CARD

ISSUE -/
Pag. 1 of 3

TOOL KIT P/N: [1]	TOOL KIT DESCRIPTION: [2]	TOOL KIT S/N: [3]
TOOL P/N: [4]	TOOL S/N: [5]	REMARKS: [6]

Section 1: CHECKS RECORD

[7] N° check	[8] DATE	[9] P/N TO CHECK	[10] CHECK	[11] FREQUENCY	[12] RESULT	[13] NOTE	CERTIFICATION [14]
							STAMP & SIGNATURE [15]
1							
2							
3							
4							
5							
6							
7							
8							
9							
10							
FINAL ACCEPTANCE [16]							
STAMP & SIGNATURE [17]						DATE [18]	

TLC_Table 1



TOOL LOG CARD

ISSUE -/-
Pag. 2 of 3

TOOL KIT P/N: [1]	TOOL KIT DESCRIPTION: [2]	TOOL KIT S/N: [3]
TOOL P/N: [4]	TOOL S/N: [5]	REMARKS: [6]

Section 2: HISTORICAL USES RECORD

[19] N°USE	[8] DATE	[6] NOTE	[13] CERTIFICATION	[19] N°USE	[8] DATE	[6] NOTE	[13] CERTIFICATION
			[14] STAMP & SIGNATURE				[14] STAMP & SIGNATURE
1				11			
2				12			
3				13			
4				14			
5				15			
6				16			
7				17			
8				18			
9				19			
10				20			

TLC_Table 2

LOG CARD FILLING INSTRUCTIONS

FIELD #	HEADER	NOTE
1	Part number of the tool Kit	
2	Tool Kit denomination	
3	Serial Number of the tool Kit	
4	Part Number of the tool (part of kit)	
5	Serial Number of the tool (if applicable)	
6	Indicate any details of the use	
7	Sequential number of check performed	
8	Date of the activity	
9	PN of tool or component (part of tool) checked/affected by issue	
10	Typology or description of checks /issue	
11	Check frequency	
12	Check result	
13	Check remarks	
14	Performance certification	
15	Stamp and signature of the personnel which performs the check	
16	Section related to the final approval	
17	Stamp and signature of the personnel which performs the final approval	
18	Date on which the final check was made	
19	Sequential number of performed used of the tool	