



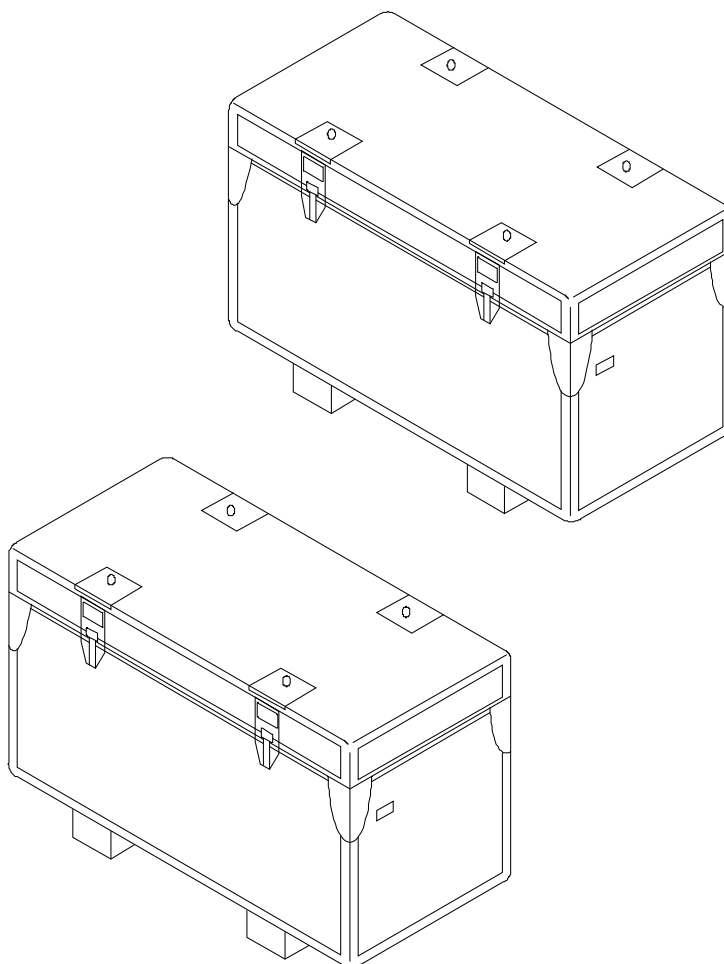
**GSE & TOOL
USE AND MAINTENANCE MANUAL**

Manual number:
MAN-3G6600G00131
REV. A

Pag. 1 of 47

GSE & TOOL MANUAL

TITLE	TOOL KIT, M/R BLADE FOLDING P/N 3G6600G00131
--------------	---



	GSE & TOOL USE AND MAINTENANCE MANUAL	Manual number: MAN-3G6600G00131 REV. A
		Pag. 2 of 47

REVISION HISTORY

REV	CHANGE DESCRIPTION	DATE
A	First issue	08/10/2021

SUMMARY

SUMMARY	3
LIST OF TABLE	4
LIST OF FIGURE	4
1. SCOPE	6
1.1. APPLICABILITY	6
1.2. OBJECT	6
1.3. WARNING AND SAFETY INSTRUCTIONS	6
2. DOCUMENTS	7
2.1. APPLICABLE DOCUMENTS	7
2.2. ACRONYMS USED	7
3. DESCRIPTION	8
4. TOP ASSEMBLY DRAWINGS	11
5. IDENTIFICATION	11
6. OVERALL DIMENSIONS	12
7. WEIGHT	12
8. MAIN PARTS	13
9. MAIN FEATURES DESCRIPTION	16
10. WARNING AND SAFETY NOTES	19
10.1. WARNING NOTE	19
10.2. SAFETY NOTES	20
11. STORAGE	21
11.1. LUBRICATION BEFORE STORAGE	21
11.2. STORAGE CONFIGURATION	21
12. MAINTENANCE	21
12.1. CLEANING	21
12.1.1. SPECIAL TOOLS, FIXTURE AND EQUIPMENT	21
12.1.2. PART REQUIREMENTS	21
12.1.3. MANUAL CLEANING	21
12.2. CHECKS	22
12.2.1. SPECIAL TOOLS, FIXTURE AND EQUIPMENT	22
12.2.2. VISUAL EXAMINATION	22
12.2.3. PERIODICAL CHECKS	22
12.2.4. DIMENSIONAL CHECKS	23
12.2.5. SPECIAL CHECKS SUMMARY	23
12.3. REPLACEMENT	23
12.3.1. REPLACEMENT PROCEDURES	23

13.	CALIBRATION	23
14.	SHELF LIFE	23
15.	SPARE PARTS	24
16.	CE MARKING.....	46
	ANNEX A.....	47

LIST OF TABLE

Table 1 – Warning Instruction	6
Table 2 – Applicable Documents.....	7
Table 3 – Warning Note.....	19
Table 4 – Visual Check.....	22
Table 5 – Spare Parts.....	24
Table 6 – Spare Parts.....	25
Table 7 – Spare Parts.....	26
Table 8 – Spare Parts.....	27
Table 9 – Spare Parts.....	29
Table 10 – Spare Parts.....	30
Table 11 – Spare Parts.....	32
Table 12 – Spare Parts.....	33
Table 13 – Spare Parts.....	34
Table 14 – Spare Parts.....	35
Table 15 – Spare Parts.....	36
Table 16 – Spare Parts.....	37
Table 17 – Spare Parts.....	38
Table 18 – Spare Parts.....	39
Table 19 – Spare Parts.....	40
Table 20 – Spare Parts.....	41
Table 21 – Spare Parts.....	42
Table 22 – Spare Parts.....	44
Table 23 – Spare Parts.....	45

LIST OF FIGURE

<i>Figure 1 – Tool Kit, M/R Blade Folding, Case 1</i>	8
<i>Figure 2 – Tool Kit, M/R Blade Folding, Case 2 (Sheet 1 of 2).....</i>	9
<i>Figure 3 – LHD Identification tag with P/N</i>	11



GSE & TOOL USE AND MAINTENANCE MANUAL

Manual number:
MAN-3G6600G00131
REV. A

Pag. 5 of 47

<i>Figure 4 – Main Parts, Case 1</i>	13
<i>Figure 5 – Main Parts, Case 2 (Sheet 1 of 2)</i>	14
<i>Figure 6 – Safety Notes</i>	20
<i>Figure 7 – Spare Parts</i>	24
<i>Figure 8 – Spare Parts</i>	25
<i>Figure 9 – Spare Parts</i>	26
<i>Figure 10 – Spare Parts</i>	27
<i>Figure 11 – Spare Parts</i>	28
<i>Figure 12 – Spare Parts</i>	30
<i>Figure 13 – Spare Parts</i>	31
<i>Figure 14 – Spare Parts</i>	33
<i>Figure 15 – Spare Parts</i>	34
<i>Figure 16 – Spare Parts</i>	35
<i>Figure 17 – Spare Parts</i>	36
<i>Figure 18 – Spare Parts</i>	37
<i>Figure 19 – Spare Parts</i>	38
<i>Figure 20 – Spare Parts</i>	39
<i>Figure 21 – Spare Parts</i>	40
<i>Figure 22 – Spare Parts</i>	41
<i>Figure 23 – Spare Parts</i>	42
<i>Figure 24 – Spare Parts</i>	43
<i>Figure 25 – Spare Parts</i>	45

1. SCOPE

1.1. APPLICABILITY

The contents of this document are meant to provide information on the P/N 3G6600G00131 TOOL KIT, M/R BLADE FOLDING.

1.2. OBJECT

The object of this document is to describe the AGE and its components, its main features and it will also provide all needed maintenance requirements to keep in service the P/N 3G6600G00131 TOOL KIT, M/R BLADE FOLDING.

1.3. WARNING AND SAFETY INSTRUCTIONS

A number of symbols are used throughout this document to indicate information to which the user should pay attention to. These are indicated below along with the specific meaning.




 Warning	...Indicates a danger that might arise from a product and might result in severe injuries or even death, if no precautions are taken.
 Caution	... Indicates a potentially dangerous situation, which might result injury or damage to the equipment.
 Notice	...Indicates a note providing information to help the reader during the procedure.

Table 1 – Warning Instruction

	GSE & TOOL USE AND MAINTENANCE MANUAL	Manual number: MAN-3G6600G00131 REV. A
		Pag. 7 of 47

2. DOCUMENTS

2.1. APPLICABLE DOCUMENTS

The following table lists the applicable documents

REF	REFERENCE OF DOCUMENT	TITLE
N.A.	N.A.	N.A.

Table 2 – Applicable Documents

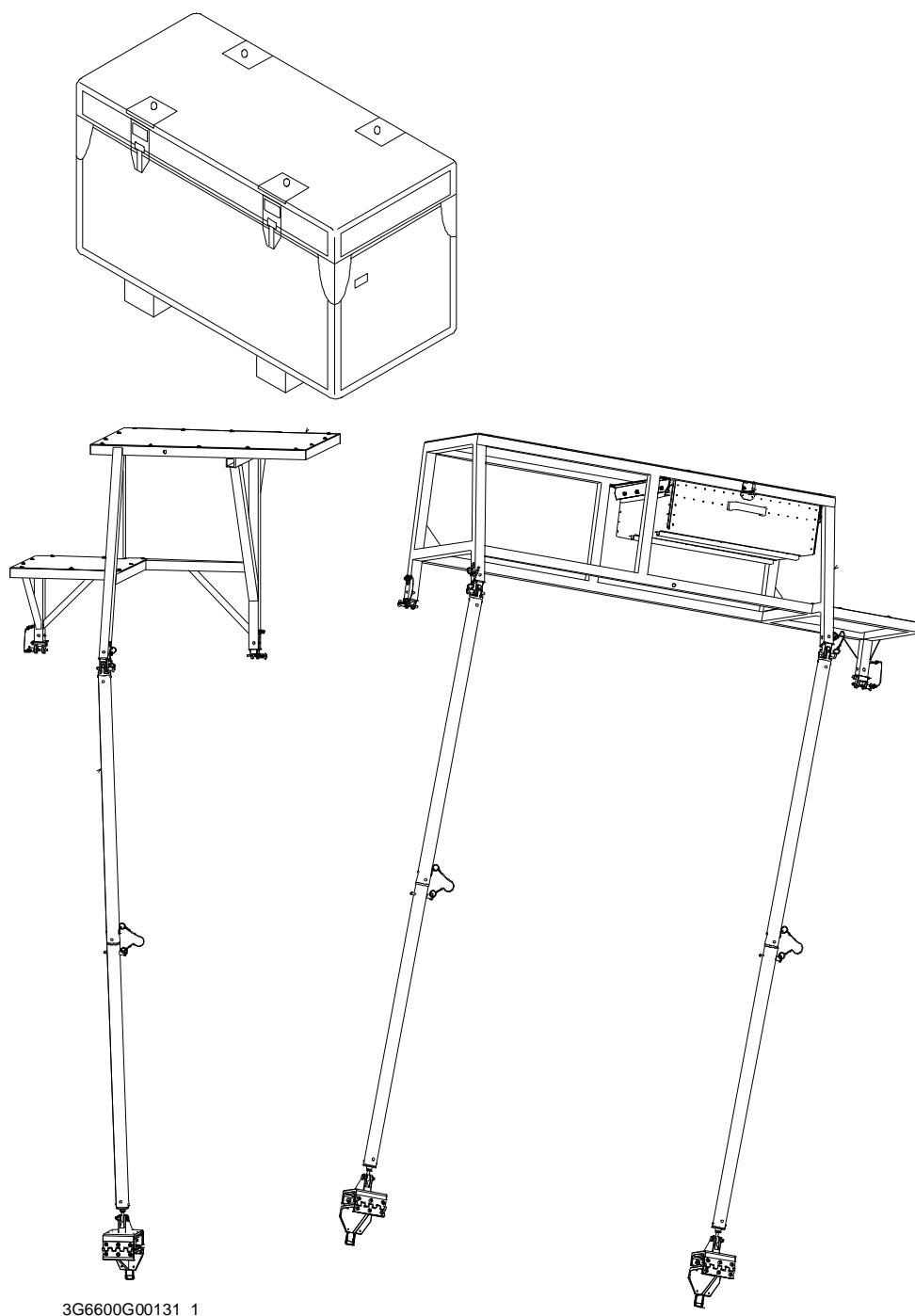
2.2. ACRONYMS USED

The main acronyms used in this document are listed below:

LHD	Leonardo Helicopter Division
HC	Helicopter
P/N	Part Number
S/N	Serial Number
N.A.	Not Applicable
FWD	Forward
M/R	Main Rotor
LH	Left Hand
RH	Right Hand

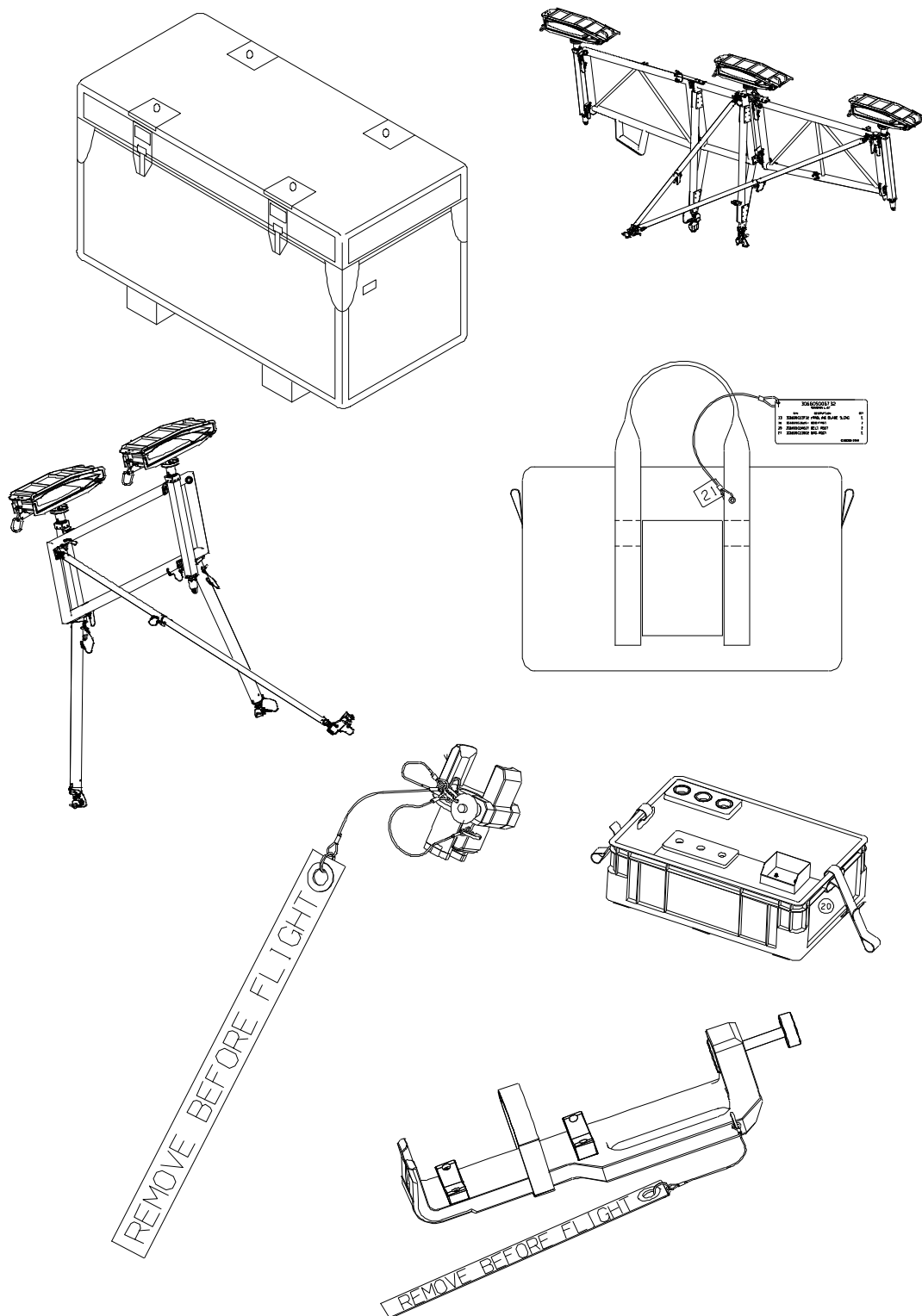
3. DESCRIPTION

This tool kit is composed by a lot of tools necessary during the folding activity of Main Rotor blades of the AW139 helicopter on ground. These tools are contained in two different cases.



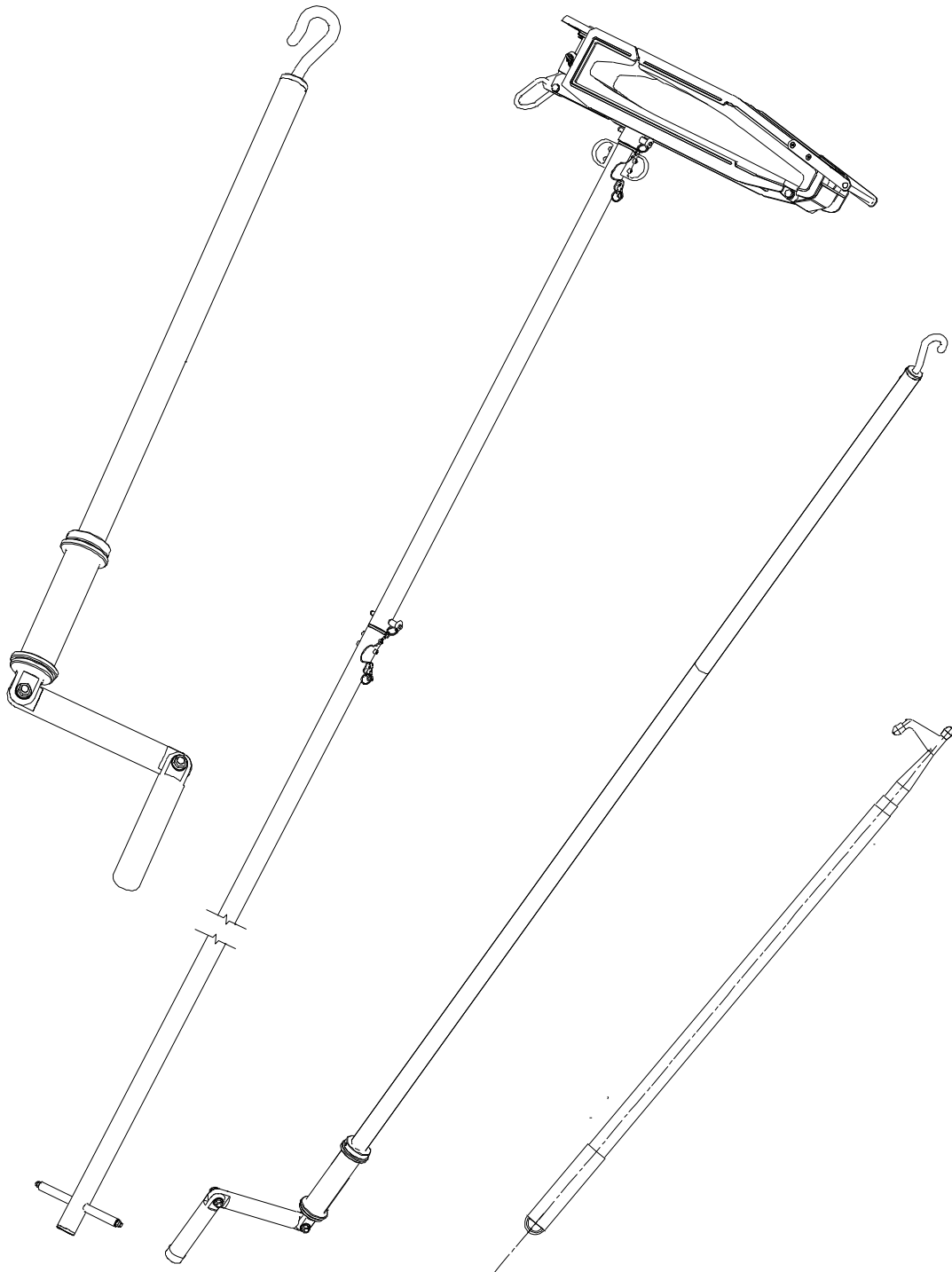
3G6600G00131_1

Figure 1 – Tool Kit, M/R Blade Folding, Case 1



3G6600G00131_2

Figure 2 – Tool Kit, M/R Blade Folding, Case 2 (Sheet 1 of 2)



3G6600G00131_3

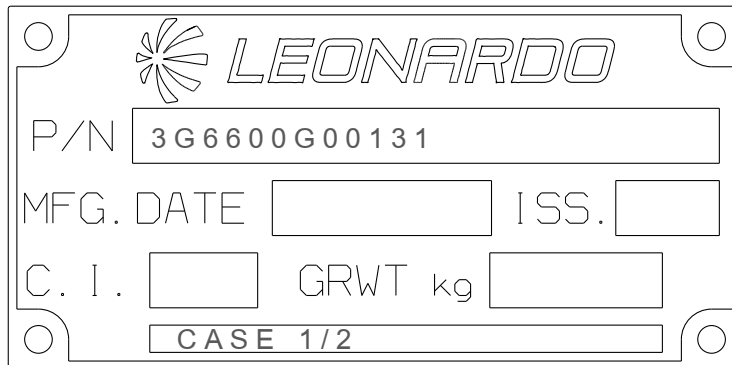
Figure 2 – Tool Kit, M/R Blade Folding, Case 2 (Sheet 2 of 2)

4. TOP ASSEMBLY DRAWINGS

Refer to P/N 3G6600G00131 TOOL KIT, M/R BLADE FOLDING.

5. IDENTIFICATION

The tool identification P/N is marked on each case on the LHD identification tag.



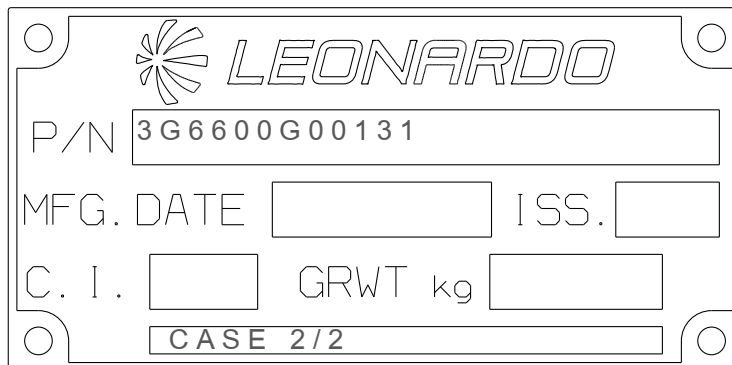
LEONARDO

P/N 3G6600G00131

MFG. DATE ISS.

C. I. GRWT kg

CASE 1/2



LEONARDO

P/N 3G6600G00131

MFG. DATE ISS.

C. I. GRWT kg

CASE 2/2

Figure 3 – LHD Identification tag with P/N

6. OVERALL DIMENSIONS

Case 1

- Length: 1810 mm
- Width: 880 mm
- Height: 1150 mm

Case 2

- Length: 1810 mm
- Width: 880 mm
- Height: 1150 mm

7. WEIGHT

Case 1

- Total Weight: 215 kg

Case 2

- Total Weight: 135 kg

8. MAIN PARTS

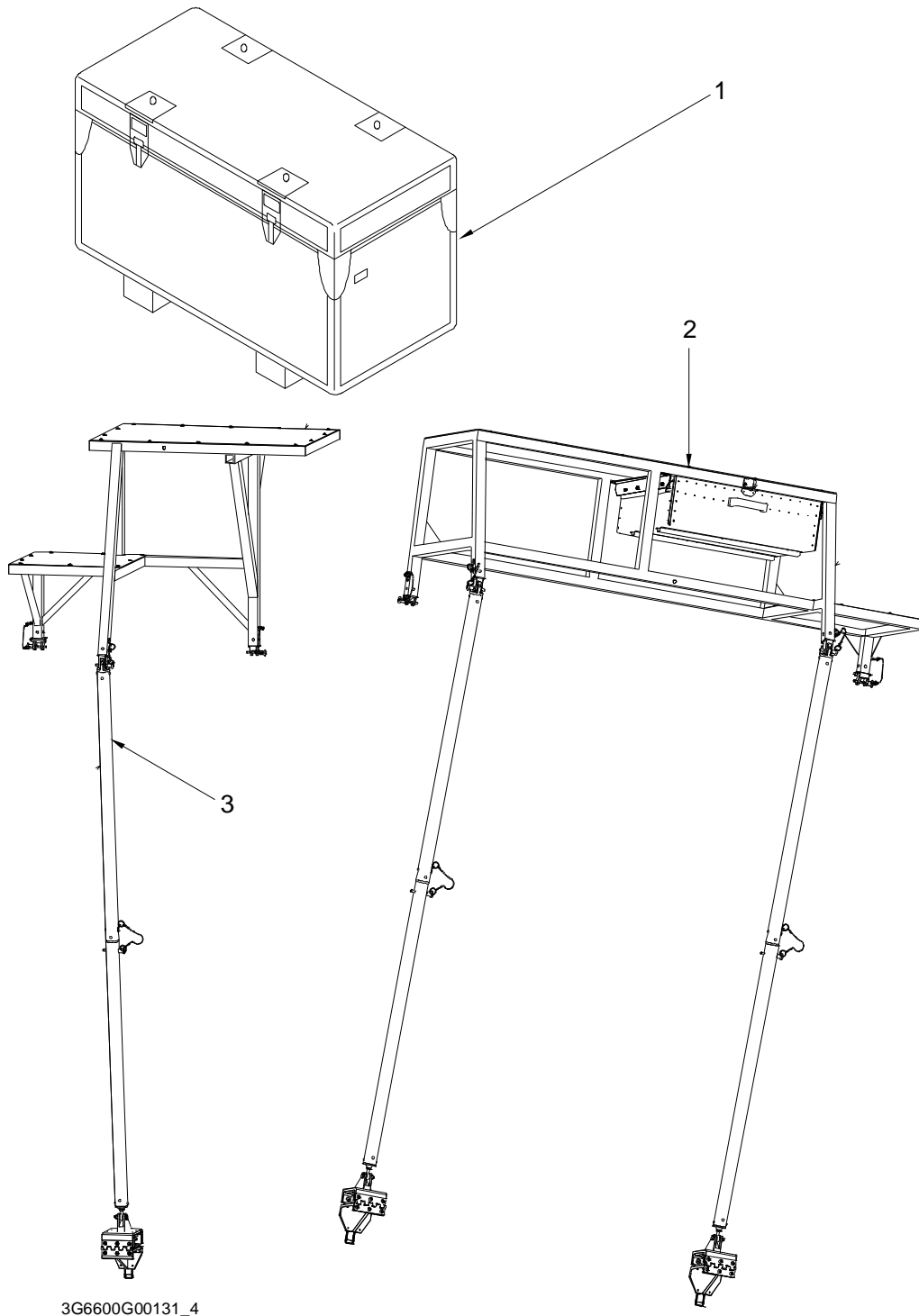
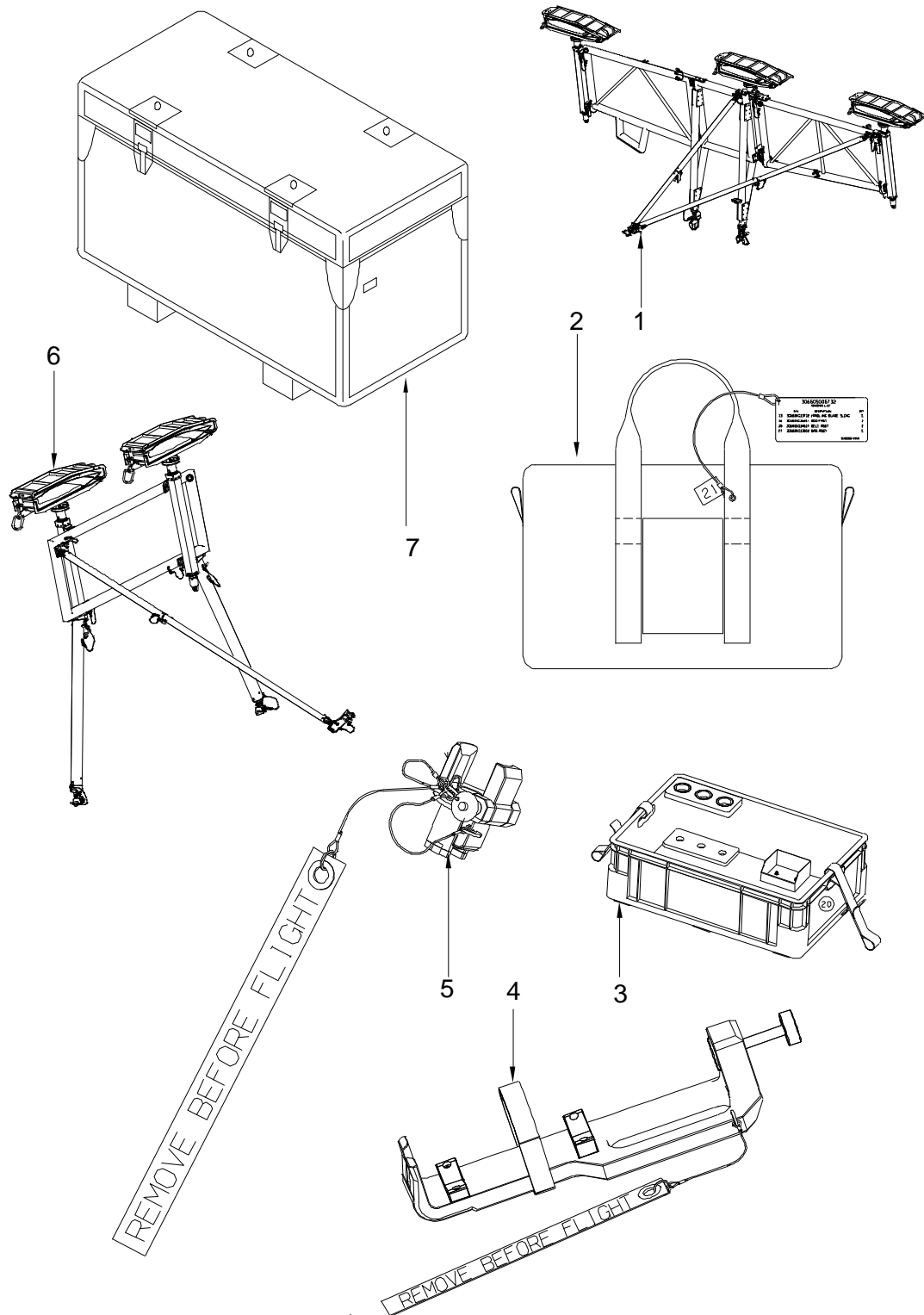
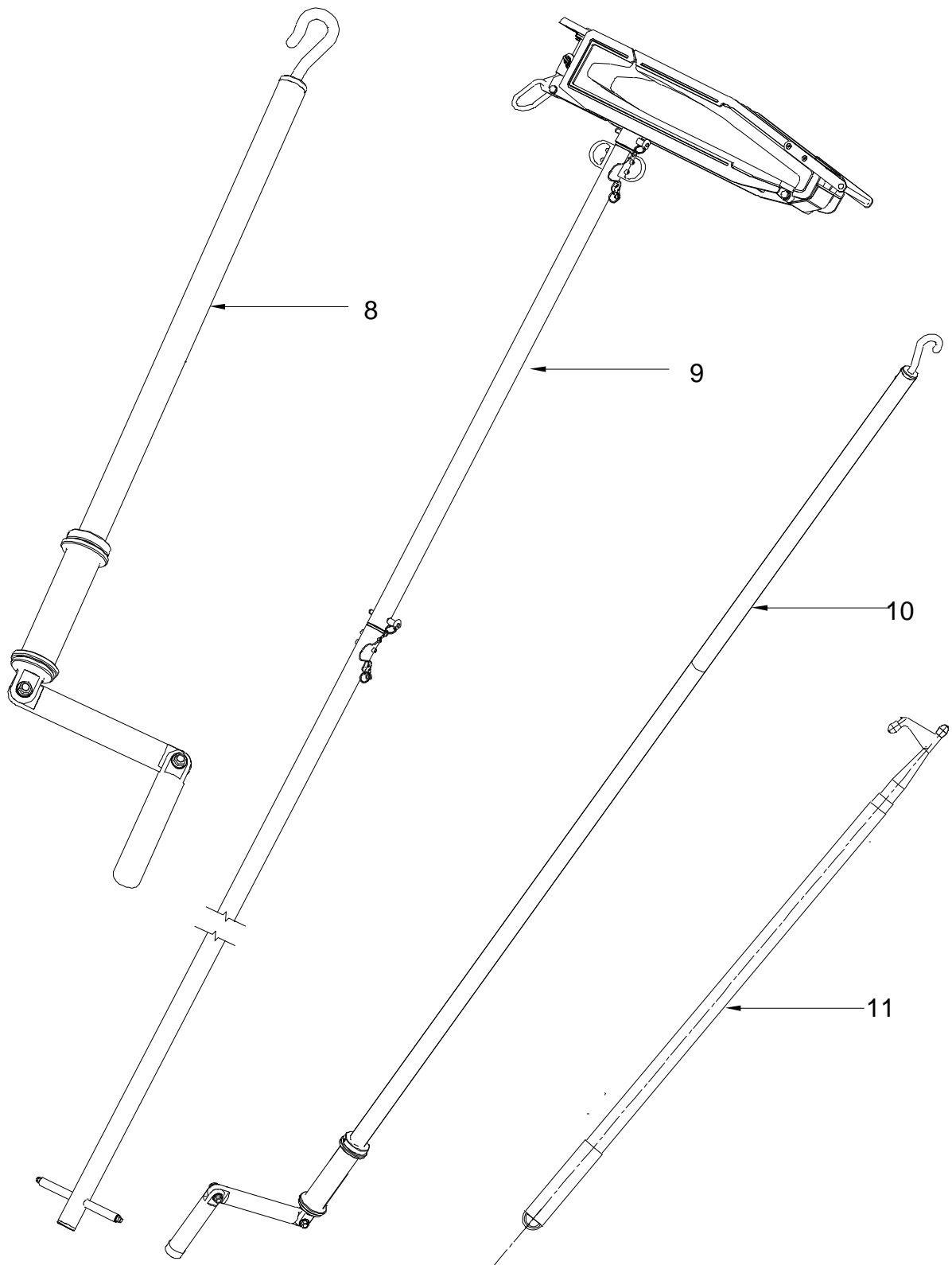


Figure 4 – Main Parts, Case 1



3G6600G00131_5

Figure 5 – Main Parts, Case 2 (Sheet 1 of 2)



3G6600G00131_6

Figure 5 – Main Parts, Case 2 (Sheet 2 of 2)

	GSE & TOOL USE AND MAINTENANCE MANUAL	Manual number: MAN-3G6600G00131 REV. A
		Pag. 16 of 47

The main parts of the TOOL KIT, M/R BLADE FOLDING are:

- 1 Folding platform case assy
- 2 LH Folding platform, assy
- 3 RH Folding platform, assy
- 4 AFT Blade support, assy
- 5 Ring sling and safety, assy
- 6 Folding platform case assy
- 7 Retracted damper tool, assy
- 8 External damper tool, assy
- 9 FWD Blade support, assy
- 10 Tool kit case, assy
- 11 Jackscrew drive rod FWD, assy
- 12 Blade assist pole, assy
- 13 Jackscrew drive rod AFT, assy
- 14 Boathook

9. MAIN FEATURES DESCRIPTION

Item 1 (ref [Figure 4](#)): Folding Platform Case Assy

This is the case that contains the Item 2 LH folding platform assy and Item 3 RH folding platform assy.

Item 2 (ref [Figure 4](#)): LH folding platform assy

This tool is necessary to provide safe support at upper deck height on left side of the hub for one technician.

The tool is composed by a main platform constrained on two interfaces on the helicopter upper deck. The platform leans on the helicopter footstep passenger by two rods secured by clamps. Under the platform there is a drawer to place tools and blade pins. The tool allows the operator to perform all the activities on the left and front side of the helicopter Main Rotor hub, which are described in the folding procedure.

Item 3 (ref [Figure 4](#)): RH folding platform assy

This tool is necessary to provide safe support at upper deck height on right side of the hub for one technician.

The tool is composed by a ladder constrained on two interfaces on the helicopter upper deck. The ladder leans on the helicopter footstep passenger by one rod secured by a clamp. Over the ladder there is a folding small platform, that can be turned up to enable the opening of the upper deck cover. The tool allows the operator to perform all the activities on the right side of the helicopter Main Rotor hub, which are described in the folding procedure.

	GSE & TOOL USE AND MAINTENANCE MANUAL	Manual number: MAN-3G6600G00131 REV. A <hr/> Pag. 17 of 47
---	--	---

Item 1 (ref [Figure 5](#)): AFT blade support

The tool is used to lift and support the three blades over the rear of the helicopter both during the folding procedure and after when the blades are folded. The tool is composed of three frames fitted on the helicopter rear and two rods to brace the frames on the left engine cowling hinge. Connected to the frames there are three jackscrews and three saddles to house one blade each. The saddle can be opened and closed by the folding operator on ground. During the folding procedure, the blade is supported and kept by the saddle but, at the same time, the blade can slide inside the saddle and rotate around the saddle support hinge. The jackscrew supporting the saddle is able to lift the blade at the grade required by the folding procedure by the jackscrew drive rod AFT. The jackscrew includes a locking device to keep the blade in the position set by the operator. All tools can be assembled and operated by the operators standing on ground.

Item 2 (ref [Figure 5](#)) : Ring Sling And Safety, Assy

This assy contains the bag with the following tools:

Belt Assy necessary to secure the body harness (bod fast) to one blade of the main rotor.

The tool consist of a belt ring shaped. The tool is used in conjunction with the body harness, which secures the operator to the helicopter blade.

Handling blade sling necessary to turn the rotor hub by acting from the ground on the saddle of the blade assist pole assy.

The tool consists of a sling with two ring straps at each end. The tool have to be used with the blade assist pole to turn the blade during the blade folding procedure.

Bod Fast necessary to secure the operator that is working on the right or left folding platforms.

The tool is a standard harness suitable to secure the operator working on the folding platform. It is used in conjunction with the belt, which secure the operator to the helicopter blade.

Item 3 (ref [Figure 5](#)) : Folding Platform Case Assy

This case contains the tools necessary to install/remove the LH and RH platform

Item 4 (ref [Figure 5](#)) :Retracted damper tool assy

This tool is necessary to lock in shortened position the Main Rotor blade damper.

The tool is a clamp that configure the blade damper extension. The clamp has one fixed end while the other end is adjustable by a screw plugged into a knob. After the blade damper is retraceted, the tool can be positioned and adjusted to the appropriate extension according to the folding procedure. A strap holds the tool close to the damper.

Item 5 (ref [Figure 5](#)): Extended damper tool assy

This tool is necessary to lock in extended position the Main Rotor blade damper.

The tool consists of a two pieces spacer that configure the blade damper extension. The two pieces are secured by a pin quick release. After the blade damper is extended, the tool can be positioned on the damper according to the folding procedure.

Item 6 (ref [Figure 5](#)) : FWD blade support

The tool is used to lift and support two blades above the nose of the helicopter both during the folding procedure and after when the blades are folded. It is composed of a frame with two legs to fit it on the helicopter nose and a rod to brace the frame on the left upper deck interface. Connected to the frame there are two jackscrews and two saddles to house one blade each. The saddle can be opened and closed by the folding operator on ground. During the folding procedure, the blade is supported and kept by the saddle but, at the same time, the blade can slide inside the saddle and rotate around the saddle support hinge. The jackscrew supporting the saddle is able to lift the blade at the grade required by the folding procedure by the jackscrew drive rod FWD. The jackscrew includes a locking device to keep the blade in the position set by the operator. All tools can be assembled and operated by the operators standing on ground.

	GSE & TOOL USE AND MAINTENANCE MANUAL	Manual number: MAN-3G6600G00131 REV. A <hr/> Pag. 18 of 47
---	--	---

Item 7 (ref [Figure 5](#)) : Tool Kit Case, Assy

This is the case that contains the Items from Item 4 to item 9 and from item 11 to item 14.

Item 8 (ref [Figure 5](#)): Jackscrew Drive Rod FWD, Assy

This tool is necessary to operate the jackscrew from the ground.

The tool is composed by a rod with a turning handle at the lower end. The rod is fitted by a hook on the top side, to operate the blade jackscrew from ground. The tool is long enough to allow the operator to handle the FWD blade support jackscrew without hitting the helicopter nose.

Item 9 (ref [Figure 5](#)): Blade assist pole assy

This tool is necessary to grasp Main Rotor blade at a section sufficiently distant from the tip in order to pull the blade and turn the rotor hub.

The tool is composed by a rod with an handle at the lower side. The top side of the rod is plugged in the saddle that catches the blade. The saddle can be opened and closed by the boathook. The saddle is covered with foam in order to avoid blade damages when the saddle is installed. At the top of the rod there is a ring suitable for the handling blade sling. To simplify the blade fastening, the saddle locking system can be held open by a wire handled directly from the operator. The tool allows the operator to turn the blade around the hub axis according to the folding procedure. To perform the procedure one operator holds the blade through the tool and another operator pulls the tool via the handling blade sling.

Item 10 (ref [Figure 5](#)): Jackscrew Drive Rod AFT, Assy

This tool is necessary to operate the jackscrew from the ground.

The tool is composed by a rod with a turning handle at the lower end. The rod is fitted by a hook on the top side, to operate the blade jackscrew from ground. The tool is long enough to allow the operator to handle the AFT blade support jackscrew.

Item 11 (ref [Figure 5](#)): Boathook

This tool is necessary to open and close the saddles.

The tool is a three telescopic rod suitable to handle the blade saddle opening and closing.

10. WARNING AND SAFETY NOTES

10.1. WARNING NOTE







 Warning	<p>Use this equipment only for the purpose that it is designed for. Any other use can result in injury or serious material damage to the components.</p>
 Caution	
 Notice	<p>The Manual can never integrally replace the adequate competence of the user.</p>
 Warning	<p>Before and after each use of the equipment is necessary to perform the checks required. Do not operate with a tool damaged or partially completed, or partially assembled.</p>
 Caution	
 Notice	<p>This Manual provides guidelines and instructions of the equipment that are in addition to - but are not intended to replace or modify but only to integrate - any general or specific rule, regulation, decree or law that is in force in the place where the equipment is in use.</p>

Table 3 – Warning Note

10.2. SAFETY NOTES

Remember to wear protective overalls, safety shoes, protective gloves and glasses during all operational and maintenance phases.



Figure 6 – Safety Notes

11. STORAGE

The Tool shall be properly stored to provide protection from external weather conditions, damage and dirty particles.

The Kit shall be stored in the dedicated transportation boxes (part of the Kit).

Ensure that the tool parts are clean before storage.

11.1. LUBRICATION BEFORE STORAGE

N.A.

11.2. STORAGE CONFIGURATION

The tool has no particular storage configuration.

12. MAINTENANCE

NOTE: Correct regular maintenance allows preventing most faults and safeguards of tool performance in time, thereby making it last longer.

Every year carry out regular maintenance on a regular basis as detailed in this manual.

NOTE: Inspection intervals for tool parts placed inside in ready storage is 12 months.

12.1. CLEANING

Before inspection and after each use, carry out the cleaning of the tool components.

12.1.1. SPECIAL TOOLS, FIXTURE AND EQUIPMENT

No special tools, fixture and equipment are required for cleaning.

12.1.2. PART REQUIREMENTS

The parts to clean should be free from the moisture, emulsified water, soaps and metal shavings that can develop of corrosive acids.

They must also be free from wide grease and / or slosh deposits.

12.1.3. MANUAL CLEANING

- A. Clean thoroughly all metal surfaces with a clean lint-free cloth (Local supply) moistened with Cleaning Solvent (MIL-PRF-680C, Type II) to do general spot cleaning of large groups areas. For nylon or Teflon surfaces, the use of a biodegradable, water dilutable cleaning compound (MIL-PRF-87937 D, Type II) is required.
- B. Repeat the cleaning process again by means another clean lint-free cloth (Local supply).
- C. Drying.
 - Verify that the solvent should not be trapped in the cavity. Normally, the solvent evaporates at room temperature in a satisfactory manner.

12.2. CHECKS

Before and after each use or at least every year, carry out the check of kit component.

Before each use ensure that the manual is available to the operator, in the event of loss, request a copy to Leonardo Helicopters Division.

The Tool kit shall be submitted to following checks to guarantee the functionality.

All required checks shall be registered on CHECK RECORDS Table. Ref. *TLC_Table 1*

After each use of tool ensure to have registered the number of uses on HISTORICAL USES RECORD Table. Ref. *TLC_Table 2*

The Tool Log Card template contained in the Annex A of this manual can be replaced with any other log card template in use in the plant where the equipment is in use.

12.2.1. SPECIAL TOOLS, FIXTURE AND EQUIPMENT

No special tools, fixture and equipment are required for the checks.

12.2.2. VISUAL EXAMINATION

NOTE: Replace the parts that do not obey the inspection requirements.

Restore the marking of the parts that results damaged or not readable.

All required visual checks are listed on Table 4.

PERIODICITY	CHECK TYPE	COMPONENTS	
BEFORE AND AFTER EVERY USE	VISUAL EXAMINATION	Evidence of impact;	All
	Crushing or stripping	All	
	Cracks	All	
	Dents	All	
	Wear	All	
	Distortions	All	
	Corrosion	All	
	Loose or defective attaching parts (warning flag)	All	
	Unsticking of parts	All glued parts.	
	Damage to the threads	All threaded std parts.	
	Marking	All	

Table 4 – Visual Check

12.2.3. PERIODICAL CHECKS

Not Applicable.



GSE & TOOL USE AND MAINTENANCE MANUAL

Manual number:
MAN-3G6600G00131
REV. A

Pag. 23 of 47

12.2.4. DIMENSIONAL CHECKS

Not Applicable.

12.2.5. SPECIAL CHECKS SUMMARY

Not Applicable.

12.3. REPLACEMENT

All the parts for which it is allowed the components replacement are listed in Paragraph 15.

12.3.1. REPLACEMENT PROCEDURES

The replacement of parts of the kit does not require specific procedures.

13. CALIBRATION

No Calibration is required.

14. SHELF LIFE

Not Applicable.

15. SPARE PARTS

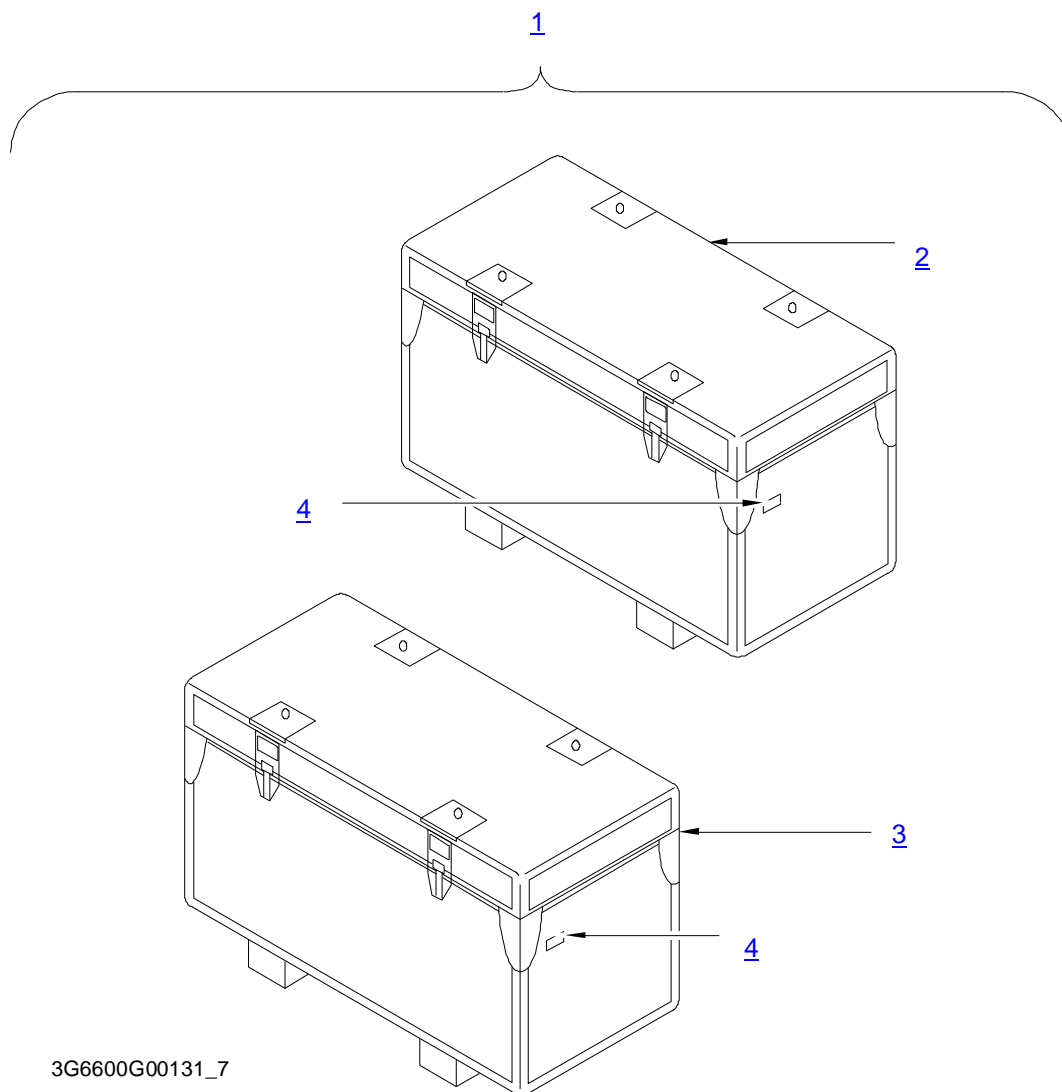
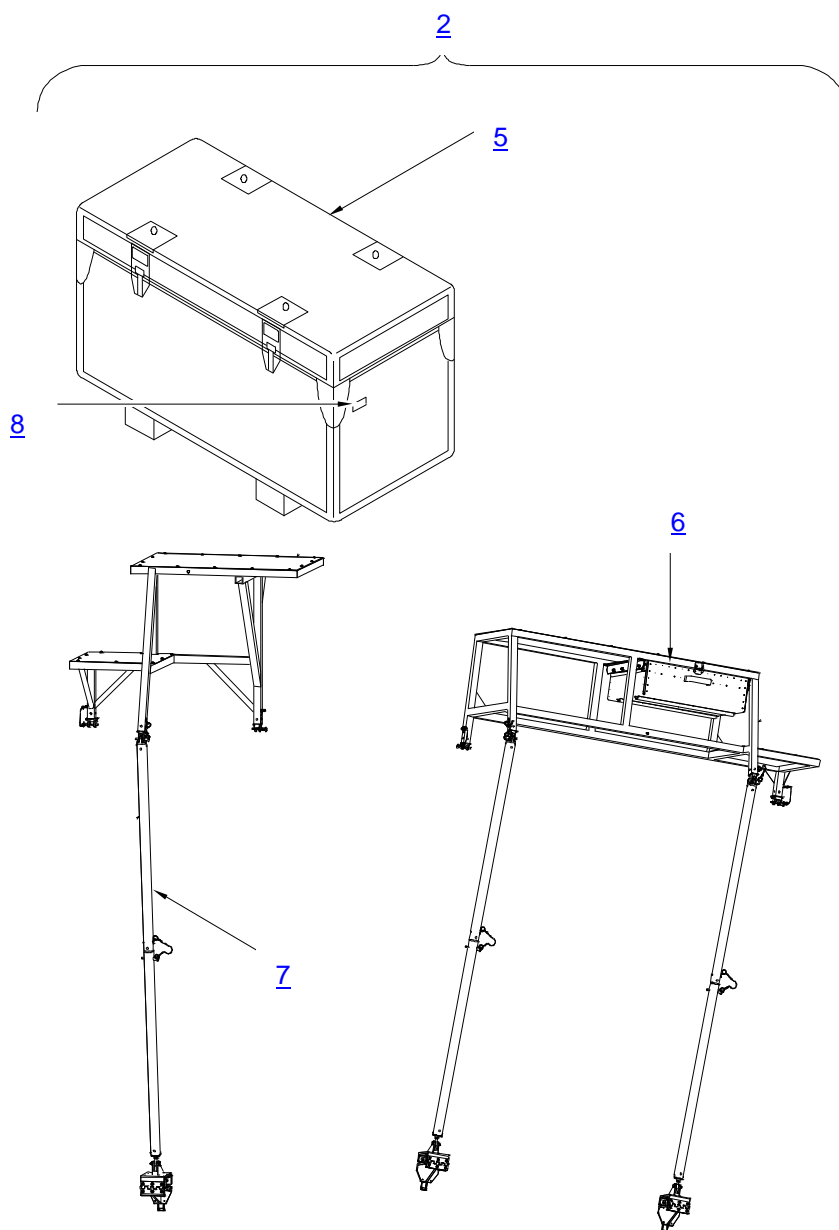


Figure 7 – Spare Parts

ITEM	P/N	DESCRIPTION	Q.TY
1	3G6600G00131	TOOL KIT, M/R BLADE FOLDING	REF.
2	3G6605G16233	FOLDING PLATFORM, ASSY (Case 2/2) (For Breakdown ref. to Fig. 8 and Table 6)	1
3	3G6605G16132	M/R BLADE FOLD. TOOLS END SUPPORT, ASSY (Case 1/2) (For Breakdown ref. to Fig. 11 and Table 9)	1
4	A304A001A1	PLATE, IDENTIFICATION	2

Table 5 – Spare Parts

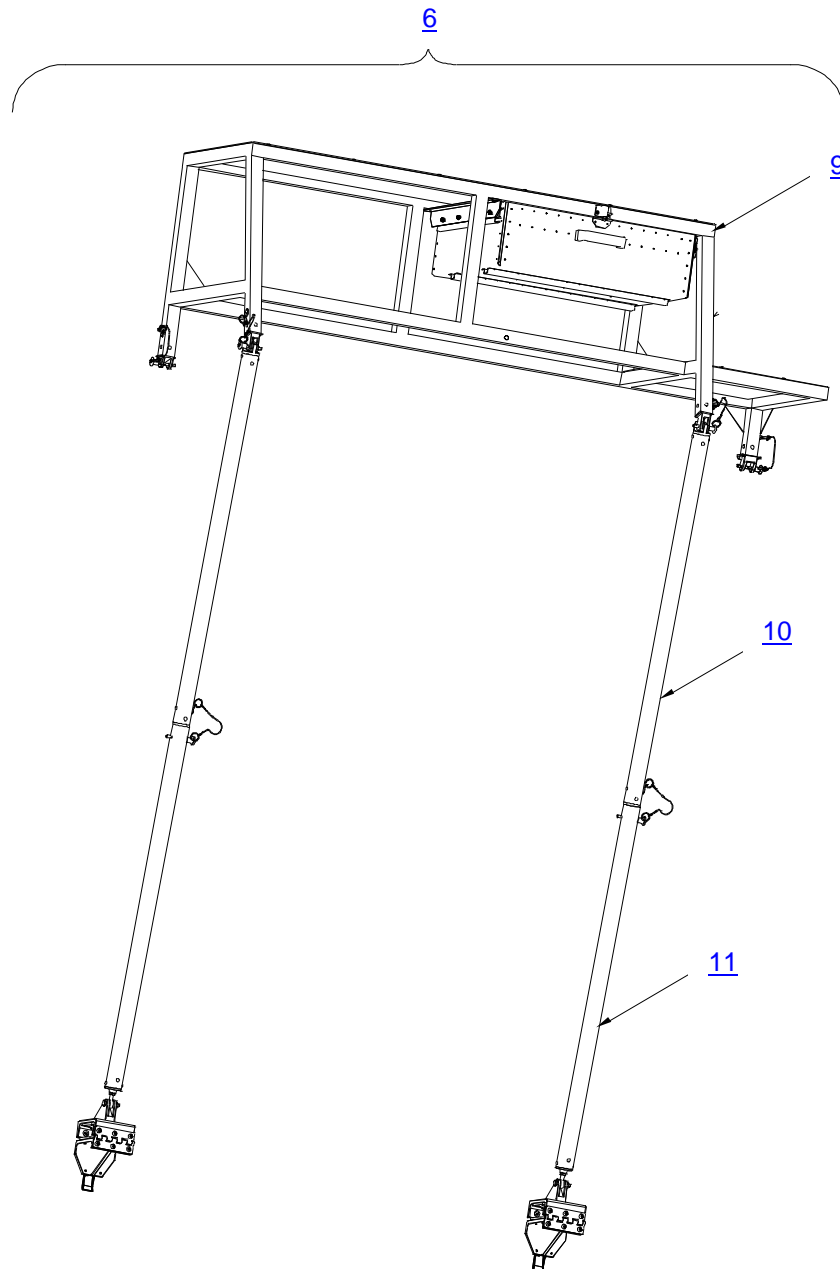


3G6600G00131_8

Figure 8 – Spare Parts

ITEM	P/N	DESCRIPTION	Q.TY
2	3G6605G16233	FOLDING PLATFORM, ASSY (Case 2/2)	REF
5	3G6605G14333	FOLDING PLATFORM CASE ASSY	1
6	3G6605G01132	LH FOLDING PLATFORM, ASSY (For Breakdown ref. to Fig. 9 and Table 7)	1
7	3G6605G01233	RH FOLDING PLATFORM, ASSY (For Breakdown ref. to Fig. 10 and Table 8)	1
8	A304A001A1	PLATE, IDENTIFICATION	1

Table 6 – Spare Parts

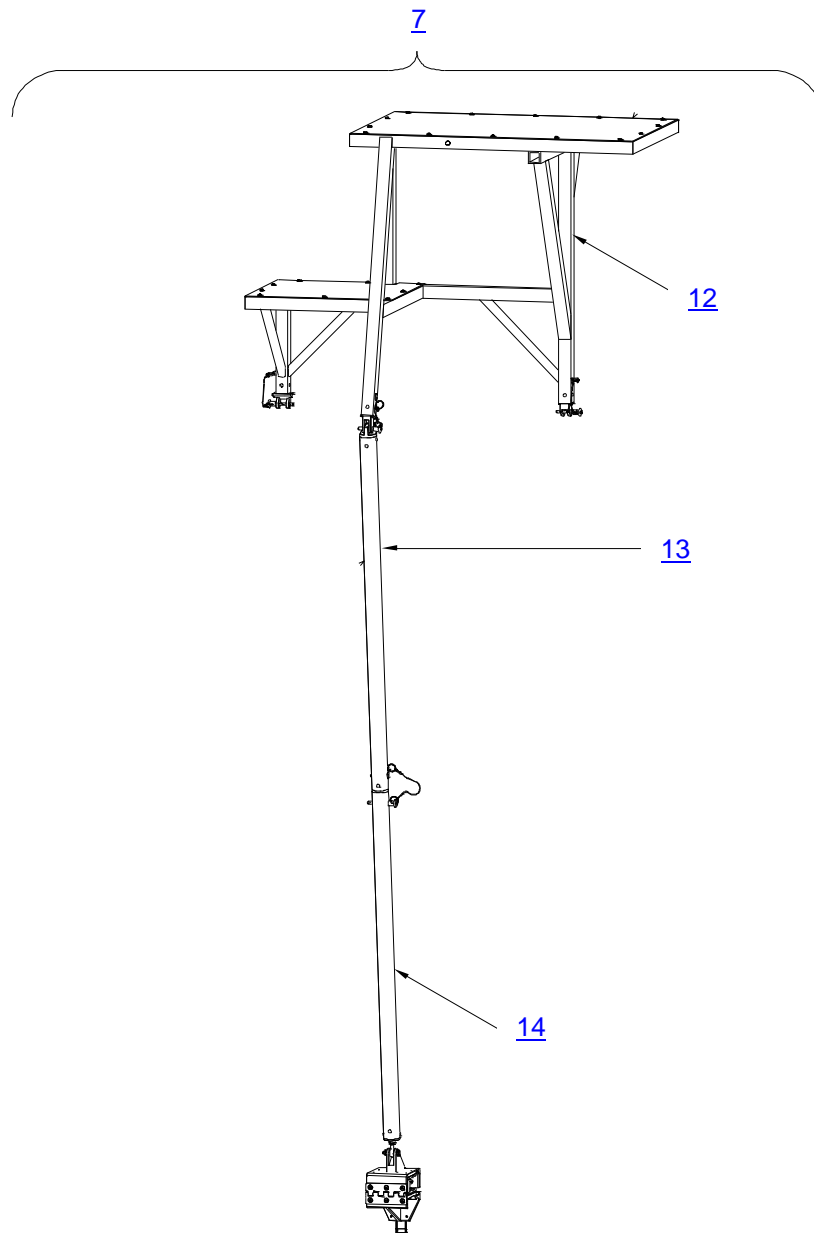


3G6605G00134_9

Figure 9 – Spare Parts

ITEM	P/N	DESCRIPTION	Q.TY
6	3G6605G01132	LH FOLDING PLATFORM, ASSY	REF
9	3G6605G02232	LH PLATFORM, ASSY	1
10	3G6605G04432	UPPER ROD ASSY	1
11	3G6605G03531	LOWER ROD ASSY	1

Table 7 – Spare Parts

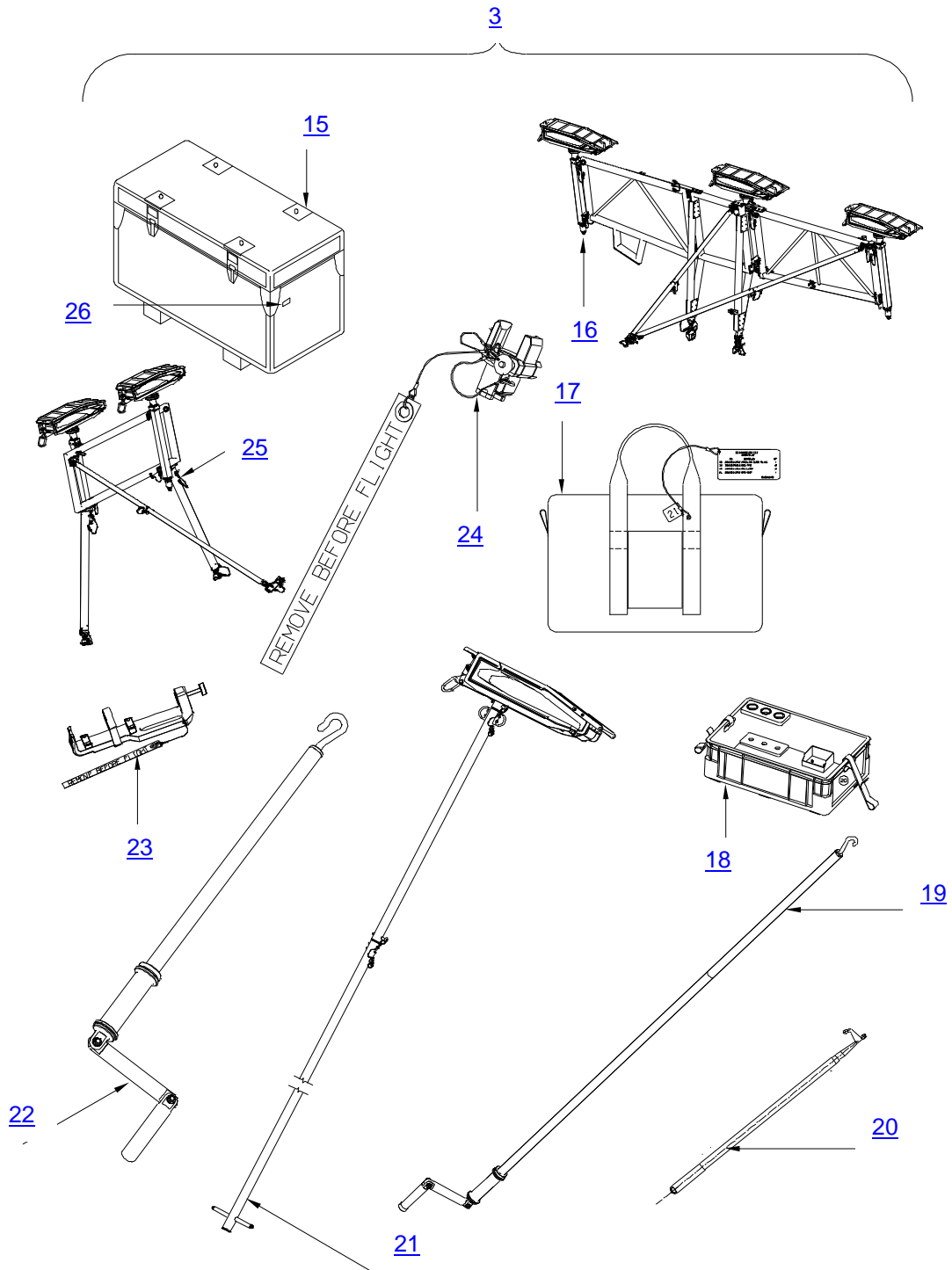


3G6600G00131_10

Figure 10 – Spare Parts

ITEM	P/N	DESCRIPTION	Q.TY
7	3G6605G01233	RH FOLDING PLATFORM, ASSY	REF
12	3G6605G01432	RH LADDER ASSY	1
13	3G6605G04432	UPPER ROD ASSY	1
14	3G6605G24531	LOWER ROD LARGE CLAMP, ASSY	1

Table 8 – Spare Parts



3G6600G00131_11

Figure 11 – Spare Parts

ITEM	P/N	DESCRIPTION	Q.TY
3	3G6605G16132	M/R BLADE FOLD. TOOLS END SUPPORT, ASSY (Case 1/2)	REF
15	3G6605G14932	TOOL KIT CASE, ASSY	1
16	3G6605G00932	AFT BLADE SUPPORT, ASSY (For Breakdown ref. Fig. 12 and Tab10)	1
17	3G6605G06732	RING SLING AND SAFETY, ASSY (For Breakdown ref. Fig. 16 and Table 14)	1
18	AS-5F-002	FOLDING PLATFORM CASE ASSY	1
19	3G6605G00631	JACKSCREW DRIVE ROD AFT, ASSY	1
20	3G6605G16551	BOATHOOK	1
21	3G6605G13833	BLADE ASSIST POLE, ASSY (For Breakdown ref. Fig. 17 to and Table 15)	1
22	3G6605G13531	JACKSCREW DRIVE ROD FWD, ASSY	1
23	3G6605G00331	RETRACTED DAMPER TOOL, ASSY (For Breakdown ref. Fig. 21 and Table 19)	1
24	3G6605G00232	EXTERNAL DAMPER TOOL, ASSY (For Breakdown ref. Fig. 22 and Table 20)	4
25	3G6605G01032	FWD BLADE SUPPORT, ASSY (For Breakdown ref. Fig. 23 and Table 21)	1
26	A304A001A1	PLATE, IDENTIFICATION	1

Table 9 – Spare Parts

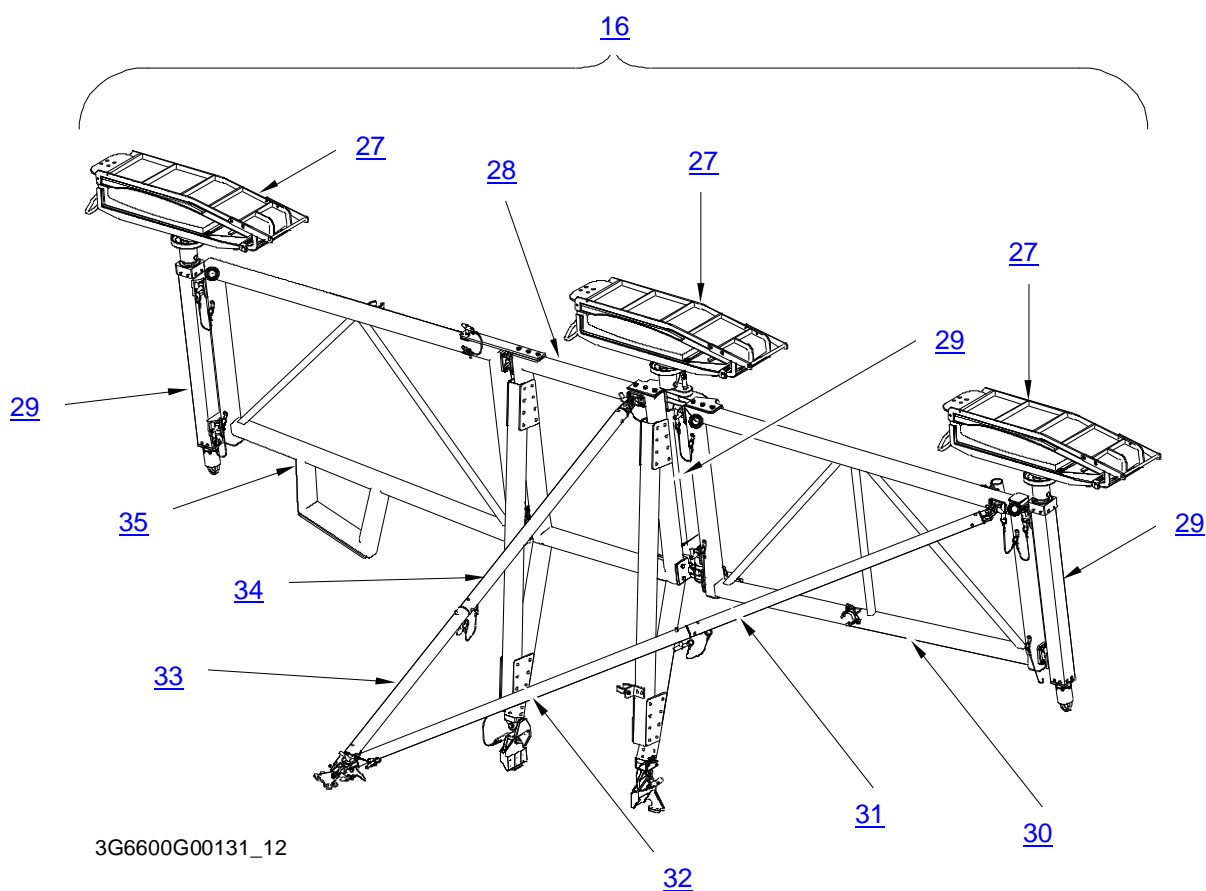
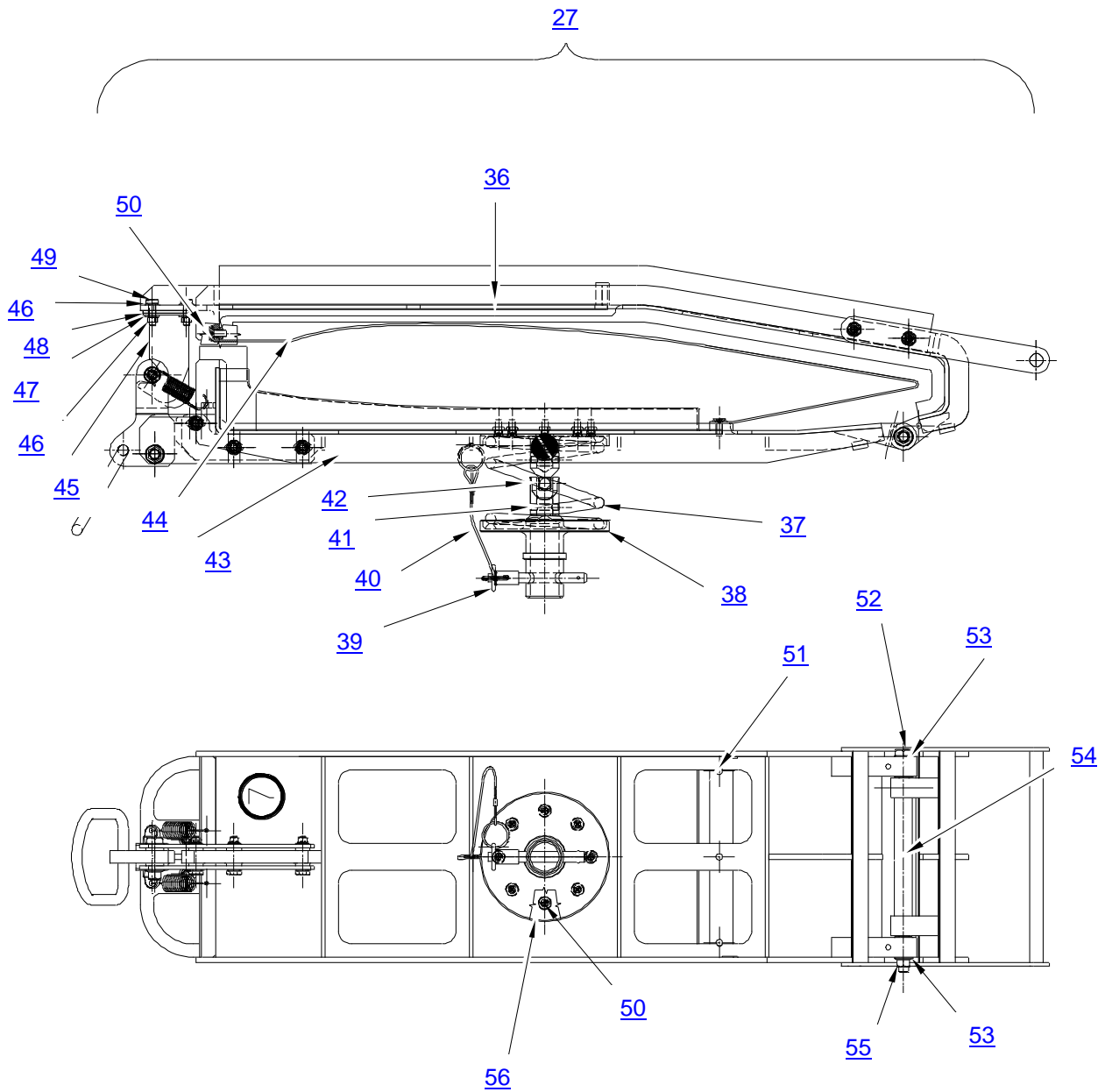


Figure 12 – Spare Parts

ITEM	P/N	DESCRIPTION	Q.TY
16	3G6605G00932	AFT BLADE SUPPORT, ASSY	REF
27	3G6605G00531	BLADE SADDLE, ASSY (For Breakdown ref. Fig. 13 and Table 11)	3
28	3G6605G06932	MAIN BLADE FRAME ASSY	1
29	3G6605G00831	BLADE JACKSCREW, ASSY	3
30	3G6605G10131	LEFT FRAME ASSY	1
31	3G6605G15431	ROD ASSY	1
32	3G6605G09332	ROD ASSY	1
33	3G6605G09032	ROD ASSY	1
34	3G6605G09631	ROD ASSY	1
35	3G6605G10832	RIGHT FRAME ASSY	1

Table 10 – Spare Parts



3G6600G00131_13

Figure 13 – Spare Parts

ITEM	P/N	DESCRIPTION	Q.TY
27	3G6605G00531	BLADE SADDLE, ASSY	REF
36	3G6605G16631	HALF-SADDLE UPPER, ASSY (For Breakdown ref. Fig. 14 and Table 12)	1
37	3G6605G18551	COMPRESSION SPRING	1
38	3G6605G18351	LOWER CLAMP	1
39	800637	PIN, BUTTON HANDLE	1
40	AS44445D150M	LANYARD NOMEX	1
41	MS16562-237	PIN SPRING	2
42	3G6605G18451	JOINT	1
43	3G6605G17131	HALF-SADDLE LOWER, ASSY (For Breakdown ref. Fig. 15 and Table 13)	1
44	3G6605G18651	PROTECTION	1
45	3G6605G18731	LATCH, ASSY	1
46	NAS1149C0332R	WASHER, FLAT	8
47	MS21043-3	NUT, SELF-LOCKING	4
48	3G6605G18951	STOPPER	2
49	AN3C6A	BOLT, MACHINE	4
50	MS24693-C270	SCREW, MACHINE	11
51	MS24693-C272	SCREW, MACHINE	3
52	AN5C63A	BOLT MACHINE	1
53	NAS1149C0532R	WASHER, FLAT	4
54	3G6605G19051	SPACER	1
55	MS21043-5	NUT, SELF-LOCKING	1
56	3G6605G18251	UPPER CLAMP	1

Table 11 – Spare Parts

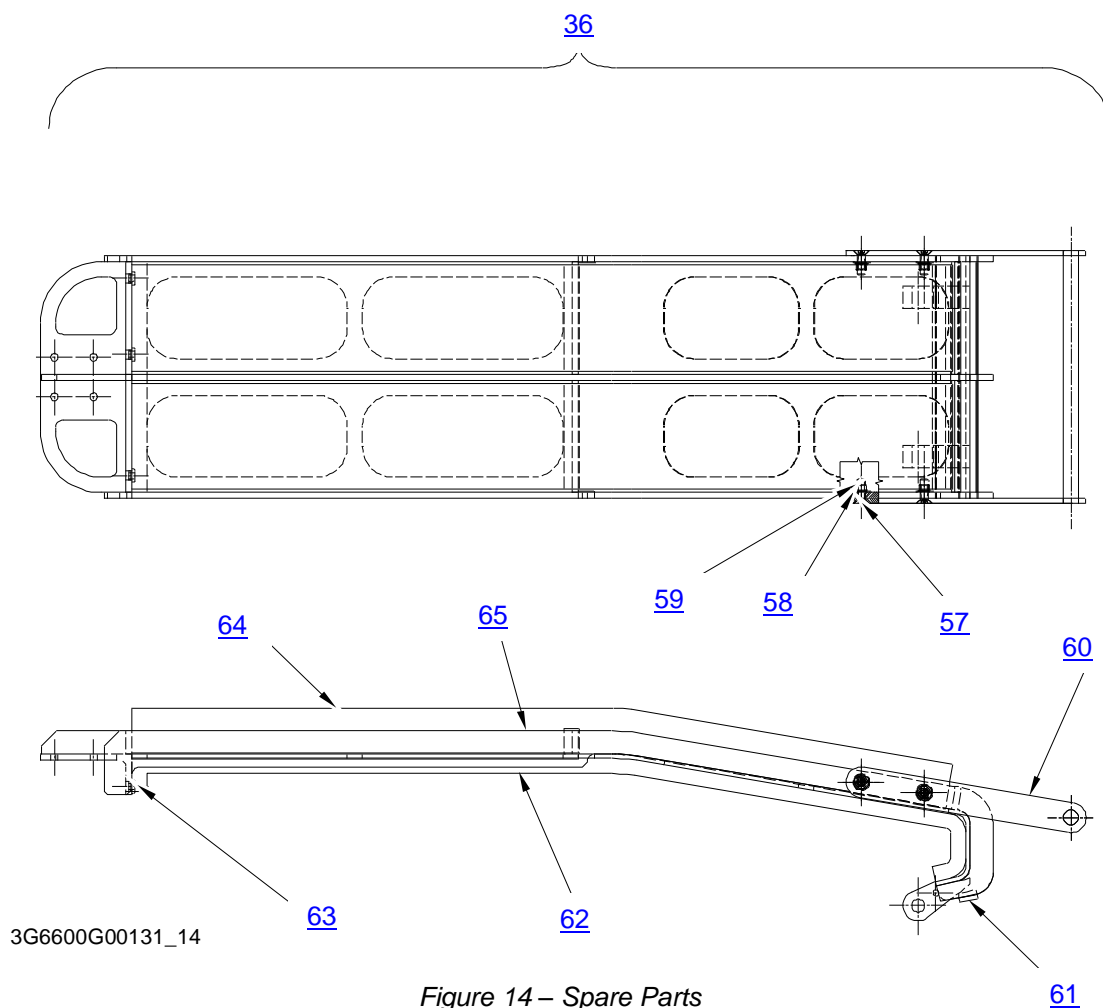
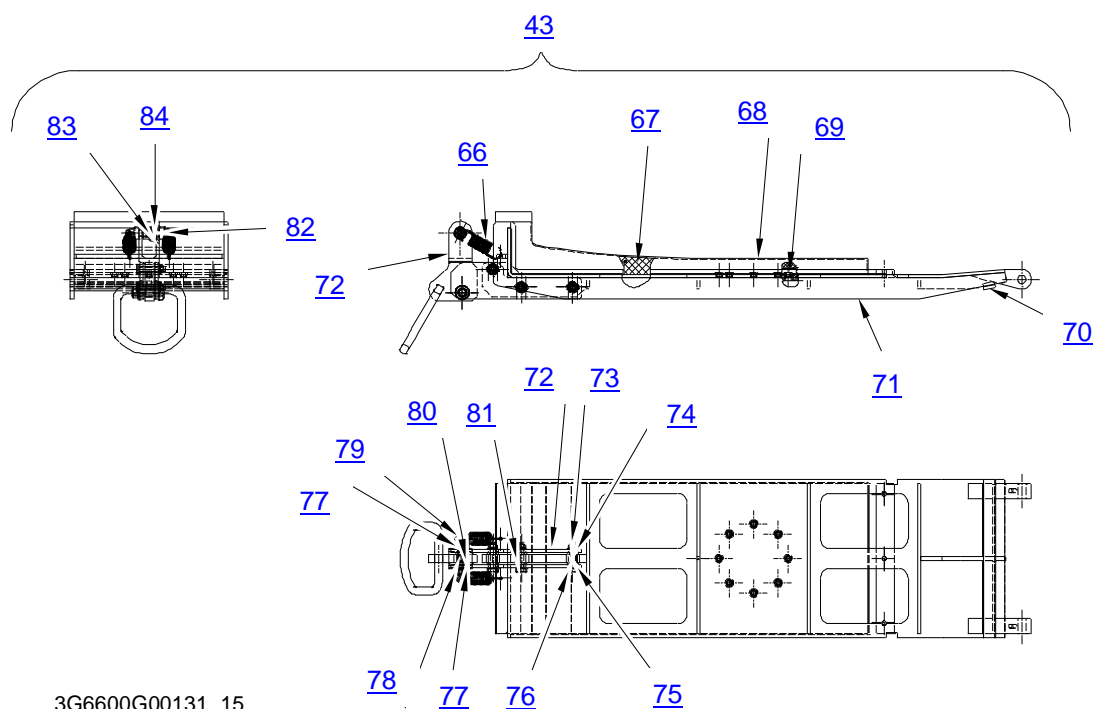


Figure 14 – Spare Parts

ITEM	P/N	DESCRIPTION	Q.TY
36	3G6605G16631	HALF-SADDLE UPPER, ASSY	REF
57	MS24693-C273	SCREW, MACHINE	4
58	NAS1149C0332R	WASHER, FLAT	4
59	MS21043-3	NUT, SELF-LOCKING EXTENDED WASHER, HEXAGON	4
60	3G6605G16831	HANDLE, ASSY	1
61	3G6605G17051	STOP	1
62	3G6605G16951	UPPER PAD	1
63	PSS-10UNF-3	NUT	3
64	3G6605G18851	FOAM	2
65	3G6605G16731	WELDED HALF-SADDLE, UPPER	1

Table 12 – Spare Parts

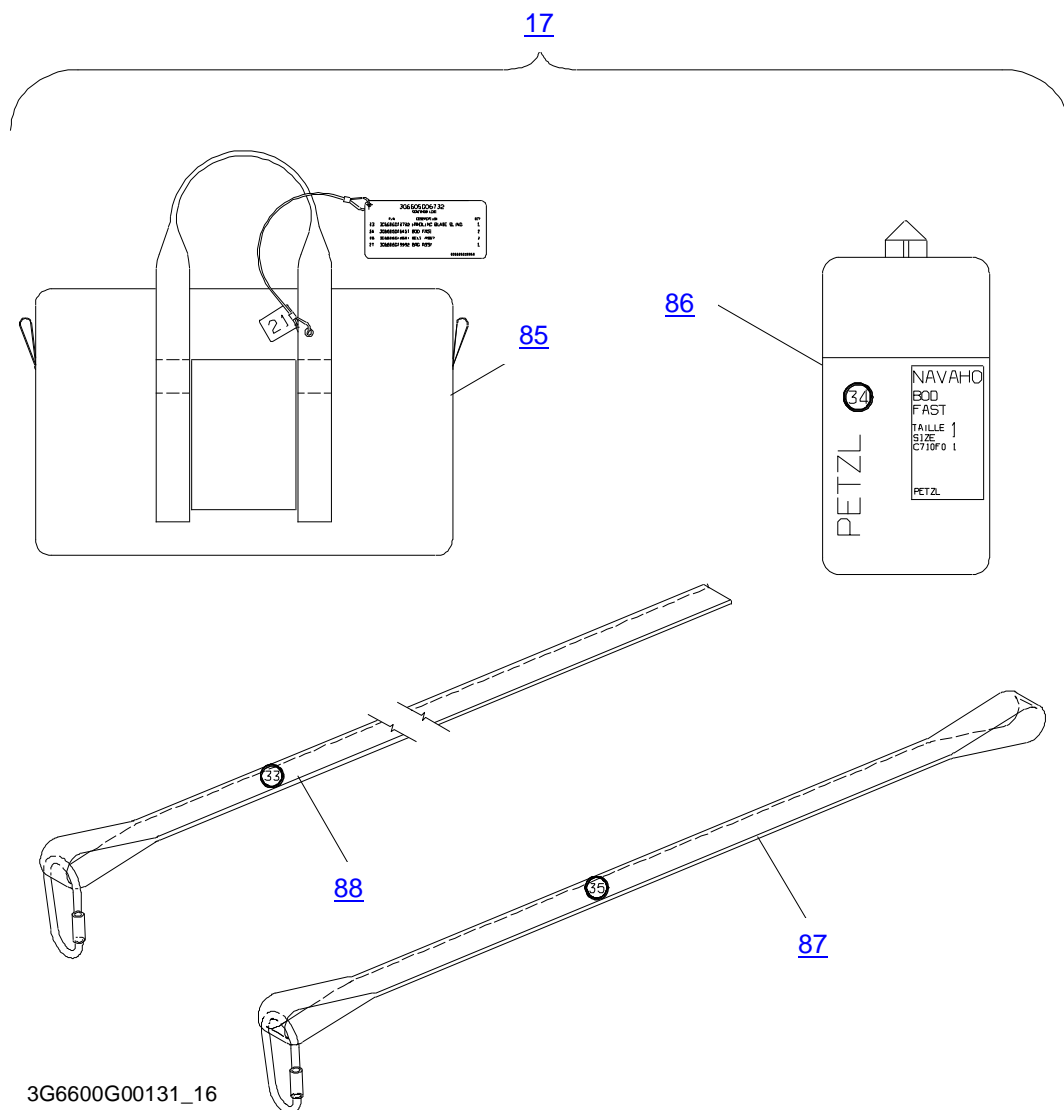


3G6600G00131_15

Figure 15 – Spare Parts

ITEM	P/N	DESCRIPTION	Q.TY
43	3G6605G17131	HALF-SADDLE LOWER, ASSY	REF
66	T41880	SPRING	2
67	3G6605G18051	LOWER PAD	1
68	3G6605G18151	PROTECTION LOWER PAD	1
69	PSS-10UNF-3	NUT	8
70	3G6605G17051	STOP	1
71	3G6605G17231	WELDED HALF-SADDLE, LOWER	1
72	3G6605G17531	RELEASE, ASSY	1
73	3G6605G17351	PLATE	2
74	MS21043-3	NUT, SELF-LOCKING EXTENDED WASHER, HEXAGON	3
75	NAS1149C0332R	WASHER, FLAT	6
76	AN3C10A	BOLT, MACHINE	3
77	NAS1149C0532R	WASHER, FLAT	2
78	MS21043-5	NUT, SELF-LOCKING EXTENDED WASHER, HEXAGON	1
79	AN5C10A	BOLT, MACHINE	1
80	3G6605G17651	SPACER	2
81	3G6605G17451	SPACER	6
82	3G6605G17751	BLOCK	2
83	3G6605G17951	ROLLER	1
84	3G6605G17851	PIN	1

Table 13 – Spare Parts



3G6600G00131_16

Figure 16 – Spare Parts

ITEM	P/N	DESCRIPTION	Q.TY
17	3G6605G06732	RING SLING AND SAFETY, ASSY	REF
85	3G6605G13932	BAG ASSY	1
86	3G6605G16451	BOD FAST	1
87	3G6605G14631	BELT ASSY	1
88	3G6605G13732	HANDLING BLADE SLING, ASSY	1

Table 14 – Spare Parts

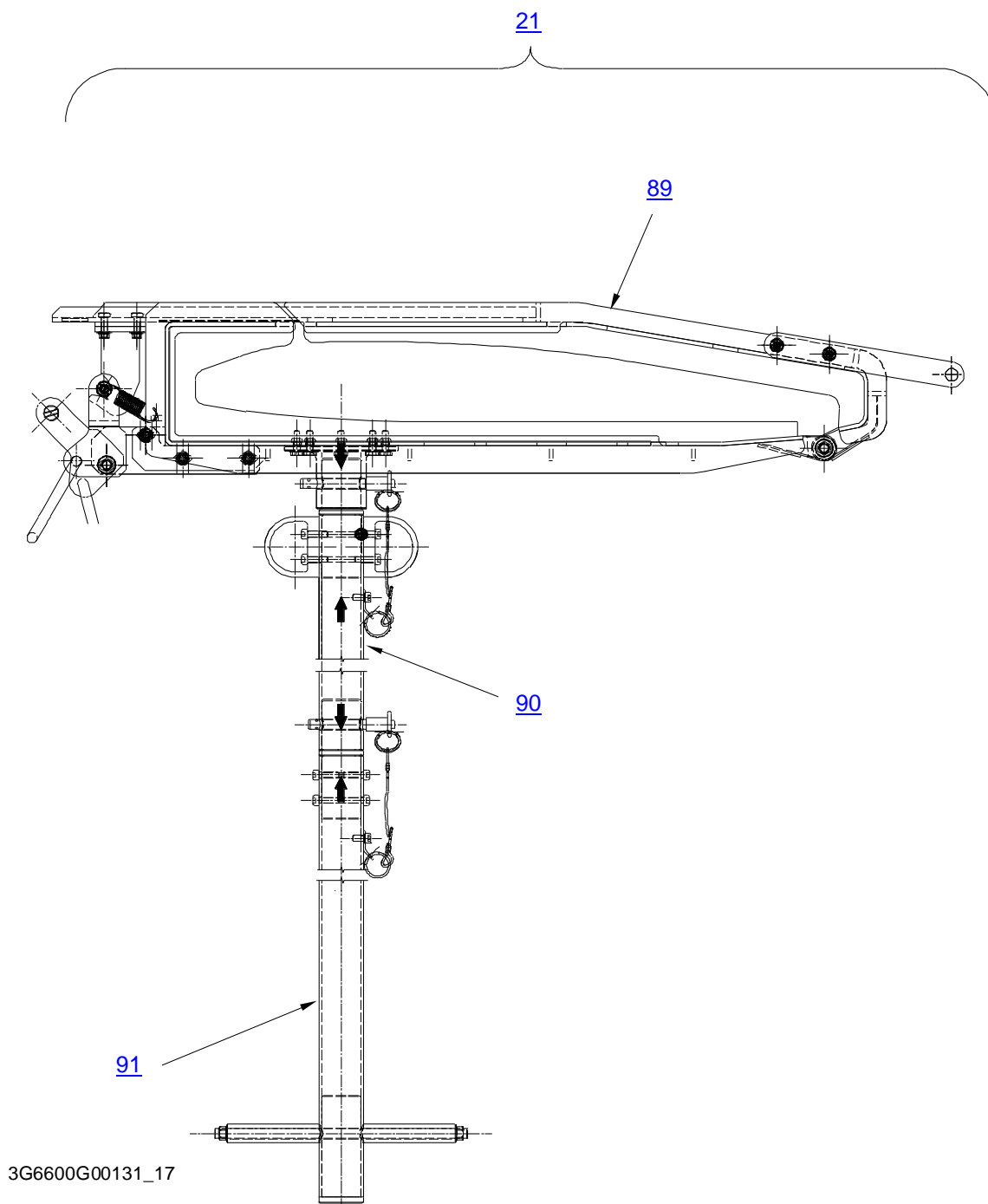


Figure 17 – Spare Parts

ITEM	P/N	DESCRIPTION	Q.TY
21	3G6605G13833	BLADE ASSIST POLE, ASSY	REF
89	3G6605G15832	BLADE ASSIST SADDLE, ASSY (For Breakdown ref. Fig. 18 and Table 16)	1
90	3G6605G15932	UPPER ROD, ASSY	1
91	3G6605G16032	LOWER ROD, ASSY	1

Table 15 – Spare Parts

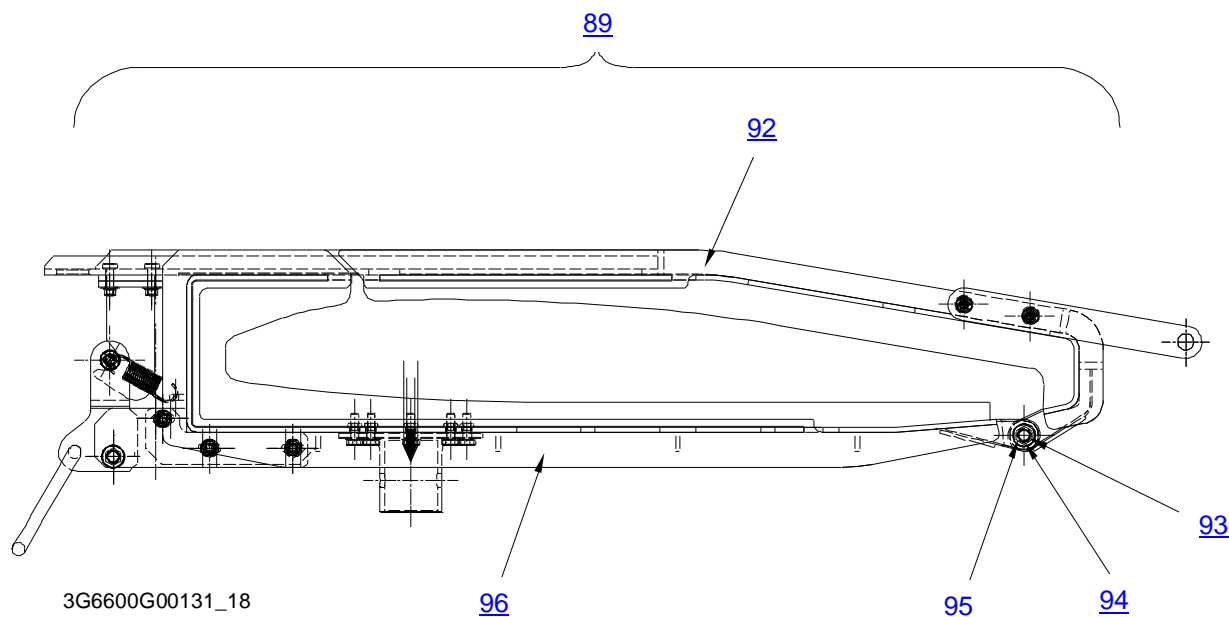
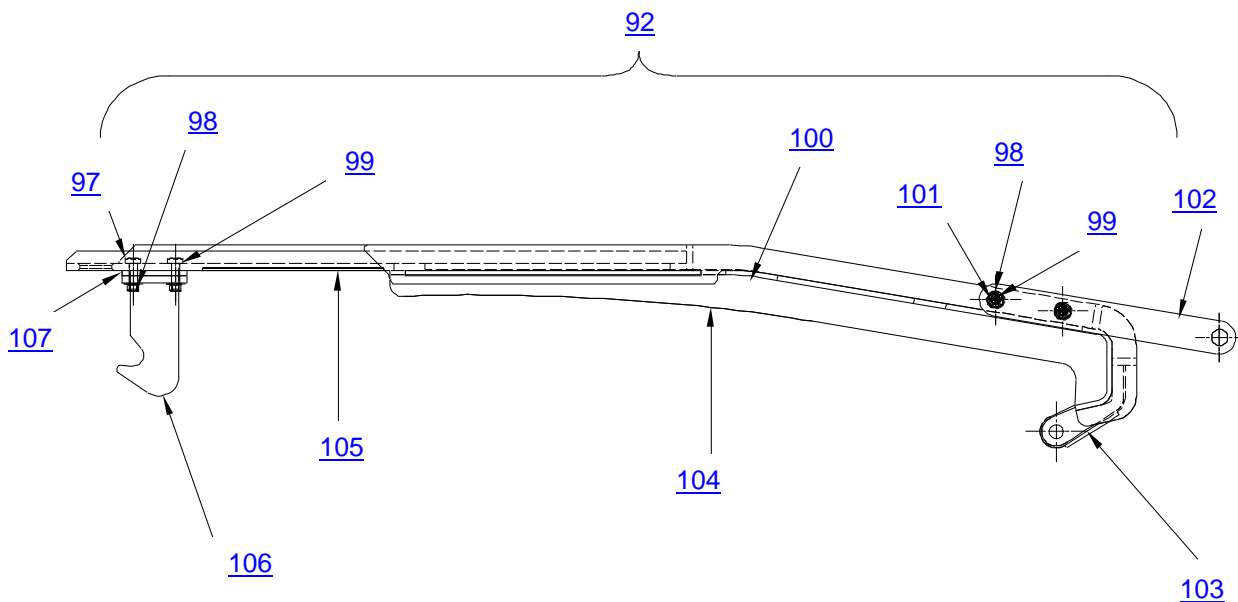


Figure 18 – Spare Parts

ITEM	P/N	DESCRIPTION	Q.TY
89	3G6605G15832	BLADE ASSIST SADDLE, ASSY	REF
92	3G6605G22631	HALF-SADDLE UPPER, ASSY (For Breakdown ref. Fig. 19 and Table 17)	1
93	AN5C40A	BOLT, MACHINE	1
94	MS21043-5	NUT, SELF-LOCKING	1
95	NAS1149C0532R	WASHER, FLAT	1
96	3G6605G23332	HALF SADDLE LOWER, ASSY (For Breakdown ref. Fig. 20 and Table 18)	1

Table 16 – Spare Parts



3G6600G00131_19

Figure 19 – Spare Parts

ITEM	P/N	DESCRIPTION	Q.TY
92	3G6605G22631	HALF-SADDLE UPPER, ASSY	REF
97	AN3C5A	BOLT, MACHINE	4
98	MS21043-3	NUT, SELF-LOCKING	8
99	NAS1149C0332R	WASHER, FLAT	8
100	3G6605G22731	HALF-SADDLE UPPER	1
101	MS24693-C273	SCREW, MACHINE	4
102	3G6605G23031	HANDLE, ASSY	4
103	3G6605G23151	STOP	1
104	3G6605G22851	UPPER PAD	1
105	3G6605G22951	PROTECTION	1
106	3G6605G18731	LATCH, ASSY	1
107	3G6605G23251	STOPPER	1

Table 17 – Spare Parts

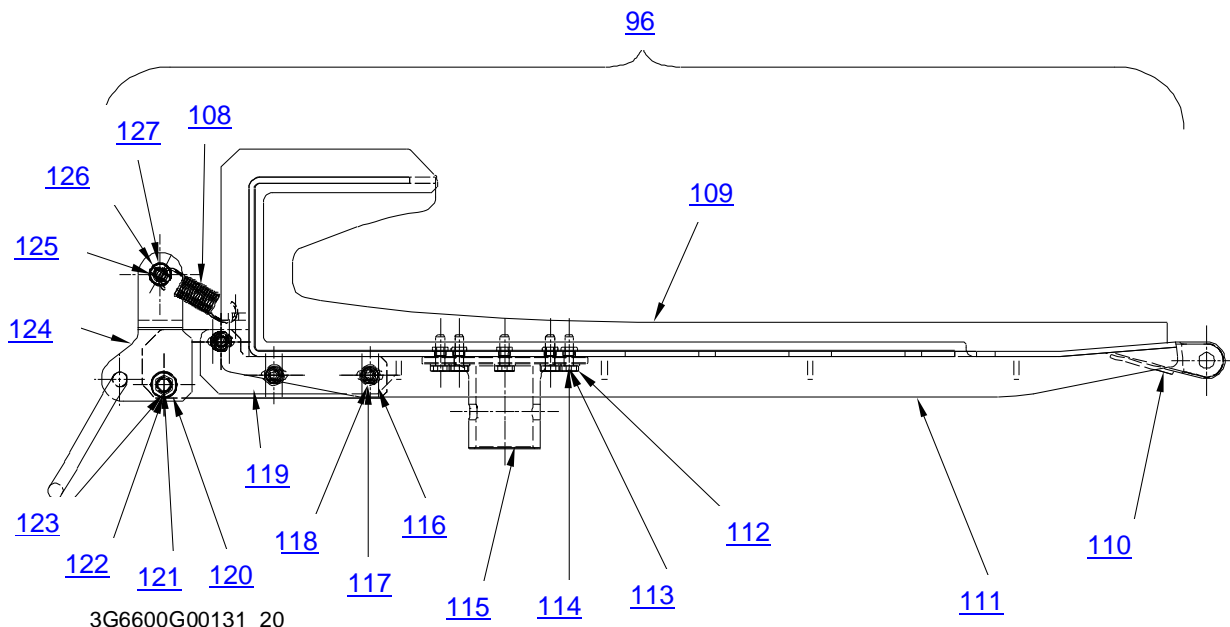
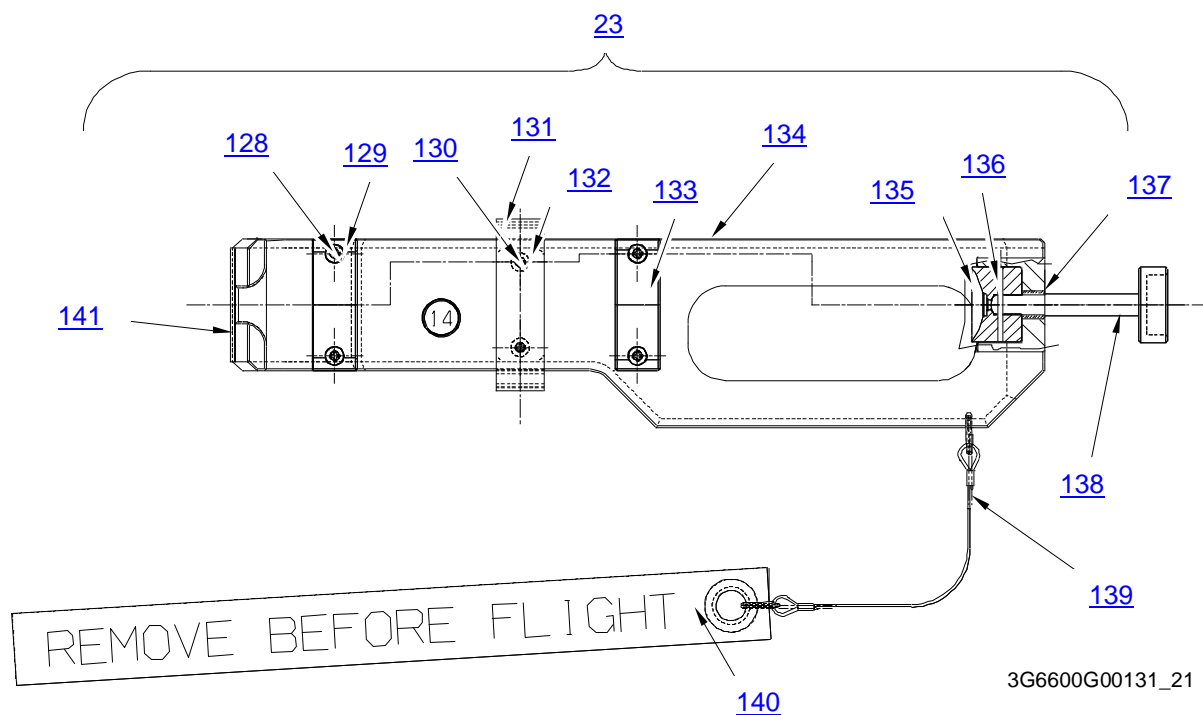


Figure 20 – Spare Parts

ITEM	P/N	DESCRIPTION	Q.TY
96	3G6605G23332	HALF SADDLE LOWER, ASSY	REF
108	T41880	SPRING	2
109	3G6605G23551	LOWER PAD	1
110	3G6605G23151	STOP	1
111	3G6605G23431	HALF-SADDLE LOWER	1
112	PSS-10UNF-3	NUT	8
113	AN3C4A	BOLT, MACHINE	8
114	NAS1149C0332R	WASHER, FLAT	11
115	3G6605G28151	CLAMP	1
116	AN3C10A	BOLT, MACHINE	3
117	MS21043-3	NUT, SELF-LOCKING	3
118	3G6605G17451	SPACER	6
119	3G6605G17351	PLATE	2
120	3G6605G17651	SPACER	2
121	NAS1149C0532R	WASHER, FLAT	2
122	MS21043-5	NUT, SELF-LOCKING	1
123	AN5C10A	BOLT, MACHINE	1
124	3G6605G17531	RELEASE, ASSY	1
125	3G6605G17751	BLOCK	2
126	3G6605G17851	PIN	1
127	3G6605G17951	ROLLER	1

Table 18 – Spare Parts

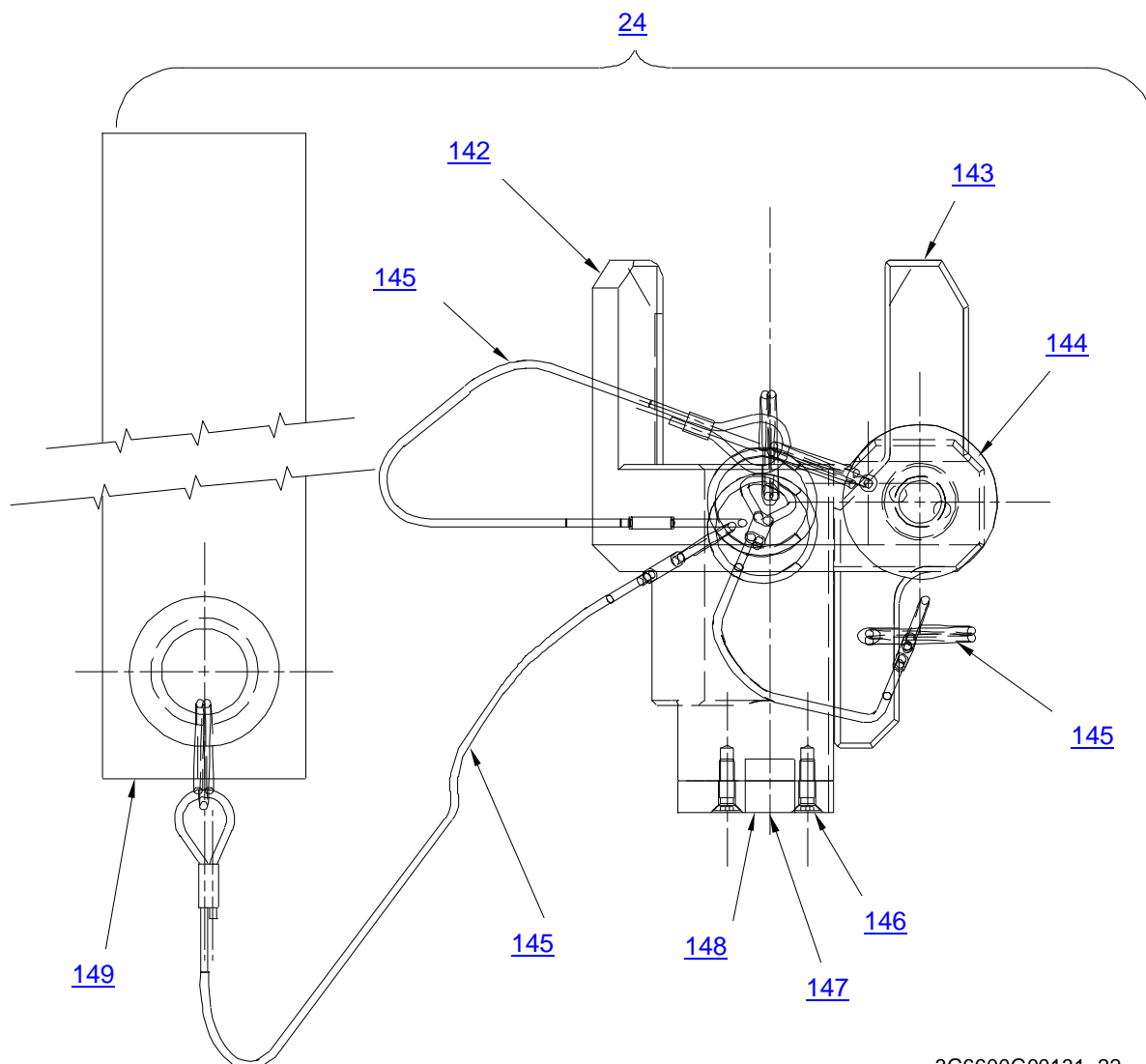


3G6600G00131_21

Figure 21 – Spare Parts

ITEM	P/N	DESCRIPTION	Q.TY
23	3G6605G00331	RETRACTED DAMPER TOOL, ASSY	REF
128	MS27039C1-09	SCREW MACHINE	4
129	3G6605G06251	SUPPORT	1
130	MS24693-C274	SCREW, MACHINE	2
131	SJ 3440	DUAL LOCK L=300	1
132	3G6605G06551	PLATE	1
133	3G6605G06151	SUPPORT	1
134	3G6605G06051	FRAME	1
135	3G6605G06451	BLOCK	1
136	MS171534	PIN, SPRING	1
137	MS122085	INSERT, SCREW THREAD	1
138	3G6605G06351	SWIVEL NUT	1
139	AS44445D200D	LANYARD NOMEX	1
140	NAS1756-24	STREAMER WARNING	1
141	3G6605G28051	RUBBER PROTECTION	1

Table 19 – Spare Parts

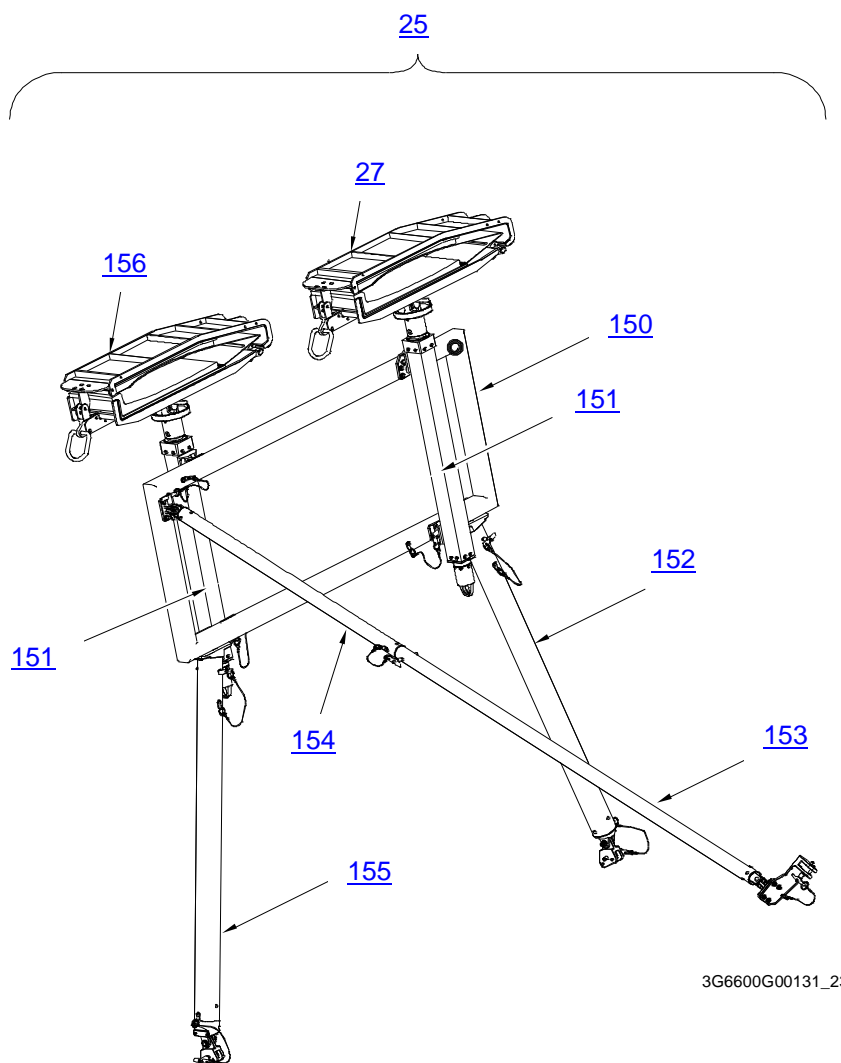


3G6600G00131_22

Figure 22 – Spare Parts

ITEM	P/N	DESCRIPTION	Q.TY
24	3G6605G00232	EXTERNAL DAMPER TOOL, ASSY	REF
142	3G6605G05751	FIXED DAMPER BLOCK	1
143	3G6605G05851	REMOVABLE DAMPER BLOCK	1
144	800657	PIN, BUTTON HANDLE	1
145	EH22400.0950	CABLE	3
146	MS24693-C5	SCREW, MACHINE	4
147	3G6605G05951	PROTECTION	1
148	3G6605G06651	PROTECTION	1
149	NAS1756-24	STREAMER WARNING	1

Table 20 – Spare Parts

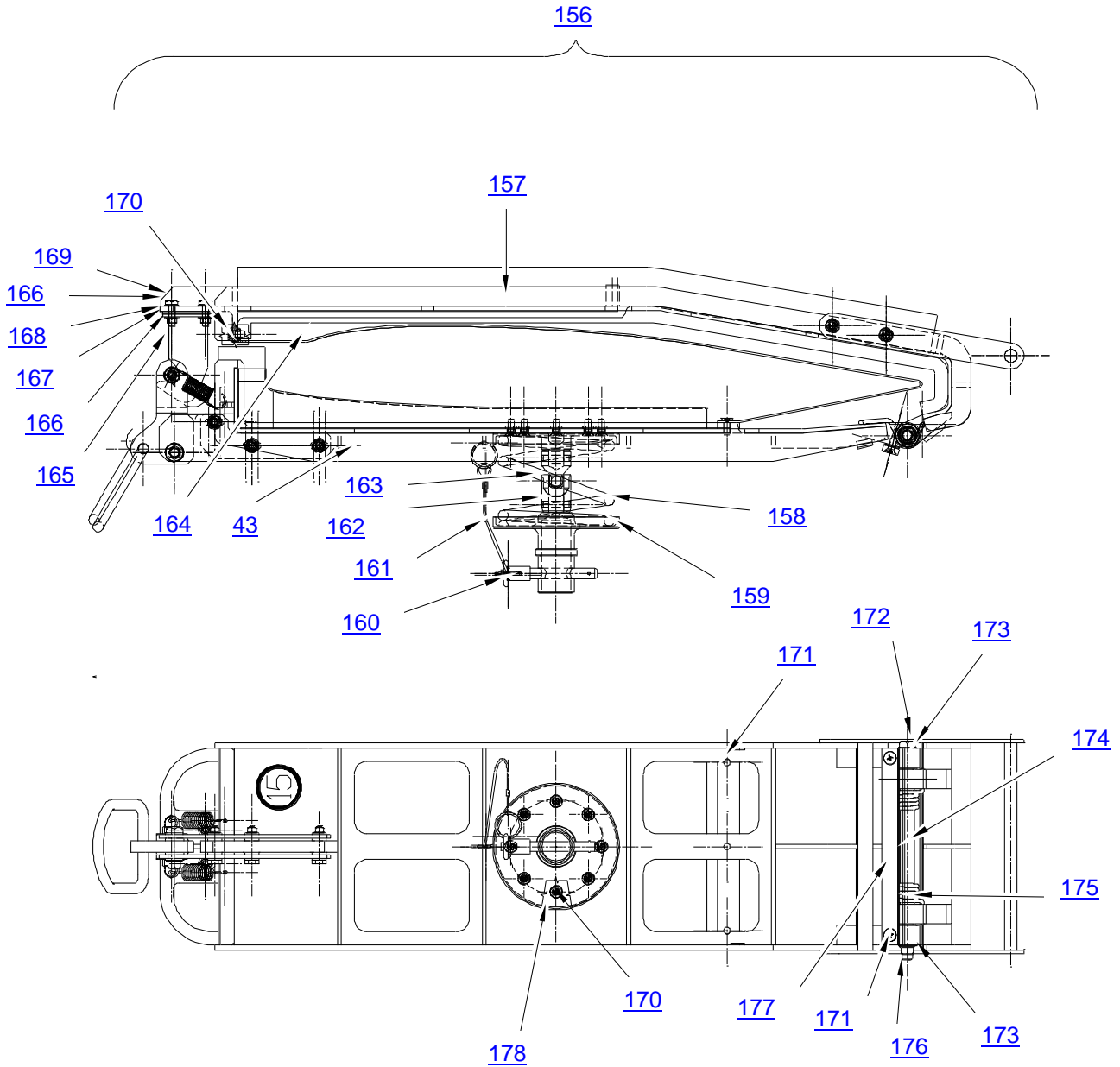


3G6600G00131_23

Figure 23 – Spare Parts

ITEM	P/N	DESCRIPTION	Q.TY
25	3G6605G01032	FWD BLADE SUPPORT, ASSY	REF
27	3G6605G00531	BLADE SADDLE, ASSY (For Breakdown ref. Fig. 13 and Table 11)	1
150	3G6605G11331	FRAME ASSY	1
151	3G6605G00831	BLADE JACKSCREW, ASSY	2
152	3G6605G12031	RIGHT ROD ASSY	1
153	3G6605G12132	ROD ASSY	1
154	3G6605G15531	ROD ASSY	1
155	3G6605G11931	LEFT ROD ASSY	1
156	3G6605G13432	BLADE SADDLE FWD LH, ASSY (For Breakdown ref. Fig. 22 and Table 20)	1

Table 21 – Spare Parts



3G6600G00131_24

Figure 24 – Spare Parts

ITEM	P/N	DESCRIPTION	Q.TY
156	3G6605G13432	BLADE SADDLE FWD LH, ASSY	REF
157	3G6605G19132	HALF-SADDLE UPPER, ASSY (For Breakdown ref. Fig. 25 and Table 23)	1
158	3G6605G18551	COMPRESSION SPRING	1
159	3G6605G18351	LOWER CLAMP	1
160	800637	PIN, BUTTON HANDLE	1
161	AS44445D150M	LANYARD NOMEX	1
162	MS16562-237	PIN SPRING	2
163	3G6605G18451	JOINT	1
43	3G6605G17131	HALF-SADDLE LOWER, ASSY (For Breakdown ref. Fig. 15 and Table 13)	1
164	3G6605G18651	PROTECTION	1
165	3G6605G18731	LATCH, ASSY	1
166	NAS1149C0332R	WASHER, FLAT	10
167	MS21043-3	NUT, SELF-LOCKING	4
168	3G6605G18951	STOPPER	2
169	AN3C6A	BOLT, MACHINE	4
170	MS24693-C270	SCREW, MACHINE	11
171	MS24693-C272	SCREW, MACHINE	5
172	AN5C63A	BOLT MACHINE	1
173	NAS1149C0532R	WASHER, FLAT	4
174	3G6605G19051	SPACER	1
175	3G6605G19451	TORSION SPRING	1
176	MS21043-5	NUT, SELF-LOCKING	1
177	3G6605G19551	PLATE	1
178	3G6605G18251	UPPER CLAMP	1

Table 22 – Spare Parts

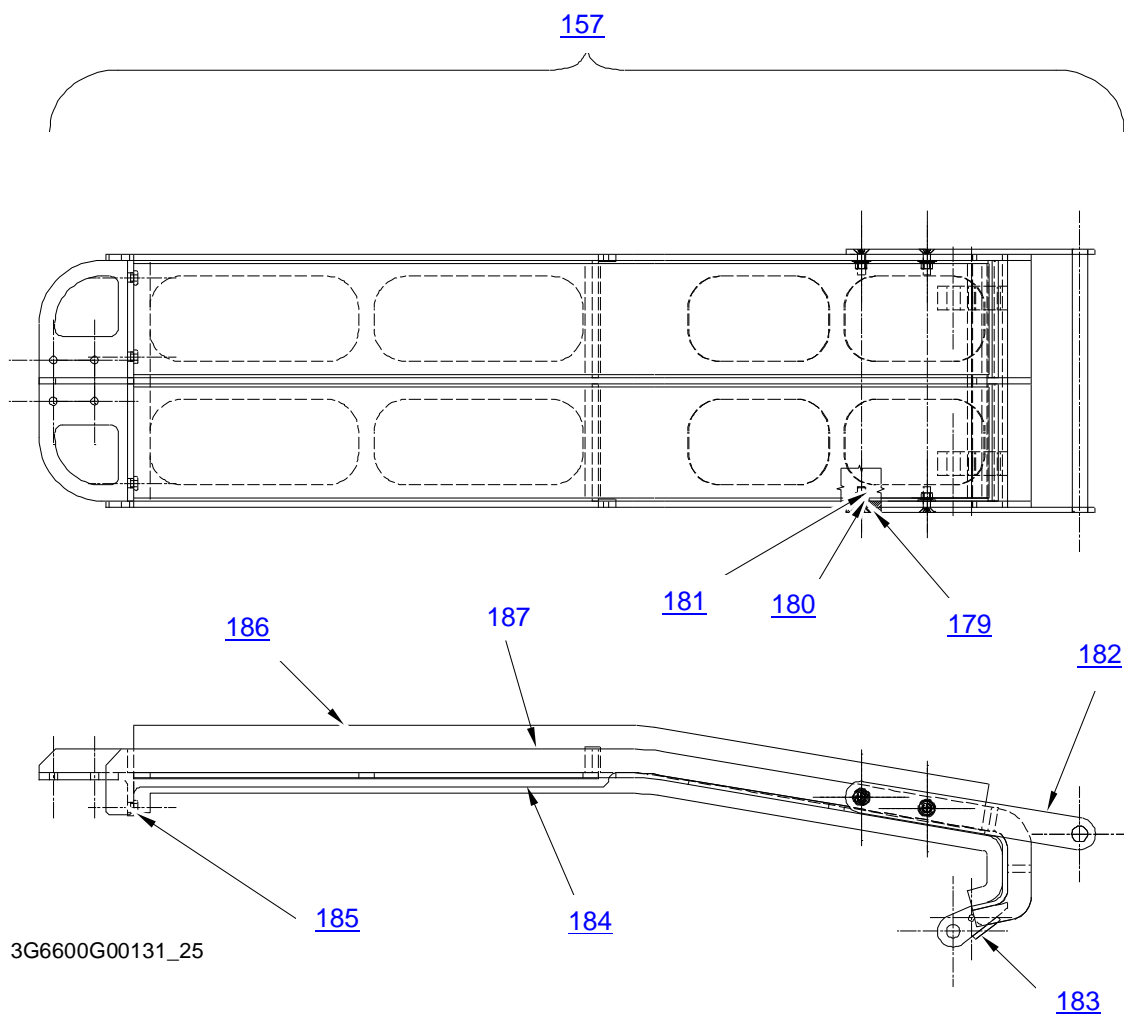


Figure 25 – Spare Parts

ITEM	P/N	DESCRIPTION	Q.TY
157	3G6605G19132	HALF-SADDLE UPPER, ASSY	REF
179	MS24693-C273	SCREW, MACHINE	4
180	NAS1149C0332R	WASHER, FLAT	4
181	MS21043-3	NUT, SELF-LOCKING EXTENDED WASHER, HEXAGON	4
182	3G6605G16831	HANDLE, ASSY	1
183	3G6605G19651	PROTECTION	2
184	3G6605G16951	UPPER PAD	1
185	PSS-10UNF-3	NUT	3
186	3G6605G18851	FOAM	2
187	3G6605G27931	WELDED HALF-SADDLE, UPPER	1

Table 23 – Spare Parts

	GSE & TOOL USE AND MAINTENANCE MANUAL	Manual number: MAN-3G6600G00131 REV. A Pag. 46 of 47
---	--	---

16. CE MARKING

No CE marking is required for the P/N 3G6600G00131 TOOL KIT, M/R BLADE FOLDING.



GSE & TOOL
USE AND MAINTENANCE MANUAL

Manual number:
MAN-3G6600G00131
REV. A

Pag. 47 of 47

ANNEX A

TOOL LOG CARD



TOOL LOG CARD

ISSUE -/
Pag. 1 of 3

TOOL KIT P/N: [1]	TOOL KIT DESCRIPTION: [2]	TOOL KIT S/N: [3]
TOOL P/N: [4]	TOOL S/N: [5]	REMARKS: [6]

Section 1: CHECKS RECORD

[7] N° check	[8] DATE	[9] P/N TO CHECK	[10] CHECK	[11] FREQUENCY	[12] RESULT	[13] NOTE	CERTIFICATION [14]
							STAMP & SIGNATURE [15]
1							
2							
3							
4							
5							
6							
7							
8							
9							
10							
FINAL ACCEPTANCE [16]							
STAMP & SIGNATURE [17]						DATE [18]	

TLC_Table 1



TOOL LOG CARD

ISSUE -/-
Pag. 2 of 3

TOOL KIT P/N: [1]	TOOL KIT DESCRIPTION: [2]	TOOL KIT S/N: [3]
TOOL P/N: [4]	TOOL S/N: [5]	REMARKS: [6]

Section 2: HISTORICAL USES RECORD

[19] N°USE	[8] DATE	[6] NOTE	[13] CERTIFICATION	[19] N°USE	[8] DATE	[6] NOTE	[13] CERTIFICATION
			[14] STAMP & SIGNATURE				[14] STAMP & SIGNATURE
1				11			
2				12			
3				13			
4				14			
5				15			
6				16			
7				17			
8				18			
9				19			
10				20			

TLC_Table 2

LOG CARD FILLING INSTRUCTIONS

FIELD #	HEADER	NOTE
1	Part number of the tool Kit	
2	Tool Kit denomination	
3	Serial Number of the tool Kit	
4	Part Number of the tool (part of kit)	
5	Serial Number of the tool (if applicable)	
6	Indicate any details of the use	
7	Sequential number of check performed	
8	Date of the activity	
9	PN of tool or component (part of tool) checked/affected by issue	
10	Typology or description of checks /issue	
11	Check frequency	
12	Check result	
13	Check remarks	
14	Performance certification	
15	Stamp and signature of the personnel which performs the check	
16	Section related to the final approval	
17	Stamp and signature of the personnel which performs the final approval	
18	Date on which the final check was made	
19	Sequential number of performed used of the tool	