

PRATT & WHITNEY CANADA  
**SERVICE BULLETIN**

P&WC S.B. No. 41052R2

**BULLETIN INDEX LOCATOR**  
**72-60-00**

TURBOSHAFT ENGINE  
OIL TRAY, ACCESSORY GEARBOX - REPLACEMENT/MODIFICATION OF

MODEL APPLICATION

PT6C-67C

Compliance: CATEGORY 7

Summary: There can be interference at assembly between the accessory gearbox oil tray and the oil pump cover jacking insert as the clearance is not optimal. Replace the accessory gearbox oil tray with a new one which has a cut-out to facilitate the installation.

Nov 25/2010  
Revision No. 2: Nov 17/2022

**PT6C-72-41052**  
Cover Sheet

<i>24-Hour Global Service</i>	<i>USA &amp; CANADA..... 1-800-268-8000</i>	<i>Other..... 1-450-647-8000</i>
<b>CFIRST CENTRE</b>	<i>International ..... (IAC*)+8000-268-8000</i>	<i>Fax..... 1-450-647-2888</i>
<i>Toll free where available (SIL GEN-027)</i>	<i>* International Access Code</i>	<i>Web Site..... <a href="http://www.pwc.ca">www.pwc.ca</a></i>

WARNING - PROPRIETARY RIGHTS & EXPORT CONTROLS NOTICE

This bulletin contains proprietary information of Pratt & Whitney Canada Corp. ("P&WC"), which P&WC provides in confidence and solely for the purposes of supporting engine certification and providing applicable information regarding the proper use, maintenance, inspection, repair, servicing and parts application of P&WC products and services, as directed therein. Neither this bulletin nor any information in it may be disclosed to others, or used for any other purpose, including, without limitation, to design, create, develop, reproduce, manufacture or derive any design, part, product, material, process, modification, configuration change or repair, or obtain FAA or other government approval to do so. Possession and use of this bulletin is also subject to the restrictions set out in P&WC's Technical Data Agreement (a copy of which may be obtained by contacting P&WC Technical Publications). The contents of this bulletin may be subject to export control laws. Unauthorized export or re-export of the bulletin, or parts thereof, is prohibited. By accepting and possessing this bulletin, you agree to be bound by the foregoing terms.

If a Government agency or department intends to disclose any information, written notice should be given to:

VP - Legal Services, Pratt & Whitney Canada Corp., 1000 Marie-Victorin (01BE5), Longueuil, Quebec J4G 1A1.



17 November 2022

P&WC S.B. No. 41052R2

REVISION TRANSMITTAL SHEET  
TURBOSHAFT ENGINE MODEL PT6C

SUBJECT: Pratt & Whitney Canada Service Bulletin No. PT6C-72-41052, Rev. No. 2, dated Nov 17/2022 (P&WC S.B. No. 41052R2) OIL TRAY, ACCESSORY GEARBOX - REPLACEMENT/MODIFICATION OF

Replace your existing copy of this service bulletin with the attached revised bulletin. Destroy the superseded copy.

Please retain this Revision Transmittal Sheet with the revised bulletin.

SUMMARY: This service bulletin is revised to:

- have the illustration published,
- update pricing to current year.

EFFECT OF REVISION ON PRIOR ACCOMPLISHMENT:

None.

NOTE: A black bar in the left margin indicates a change in that line of text or figure.

REVISION HISTORY:

Original Issue: Nov 25/2010  
Revision No. 1: Apr 12/2018  
Revision No. 2: Nov 17/2022



PRATT & WHITNEY CANADA  
**SERVICE BULLETIN**

P&WC S.B. No. 41052R2

TURBOSHAFT ENGINE  
OIL TRAY, ACCESSORY GEARBOX - REPLACEMENT/MODIFICATION OF

1. Planning Information

A. Effectivity

PT6C-67C Engines which are before and include Serial No. PCE-KB0821.

NOTE: The above effectivity list does not identify engines that have been converted from one engine model to another via an engine conversion service bulletin. To clarify the effectivity of converted engines, refer to the original engine effectivity above. For the parts embodied during the engine conversion, refer to conversion service bulletin.

B. Concurrent Requirements

P&WC S.B. No. 41052 must be done in conjunction with P&WC S.B. No. 41049.

C. Reason

(1) Problem

There can be interference at assembly between the accessory gearbox oil tray and the oil pump cover jacking insert.

(2) Cause

The clearance between the oil tray and the oil pump cover jacking insert is not optimal.

(3) Solution

Replace the accessory gearbox oil tray with a new one which has a cut-out to facilitate the installation.

D. Description

Replace the accessory gearbox oil tray or modify and reidentify the old one.

E. Compliance

CATEGORY 7 - You can do this service bulletin when the supply of superseded parts is fully used.

F. Approval

The technical content of this document is approved under the authority of the Transport Canada Civil Aviation (TCCA) Design Approval Organization No: DAO #93-Q-01.

G. Manpower

No more man-hours are necessary to include this service bulletin at overhaul.

P&WC No. E0628N

Nov 25/2010

Revision No. 2: Nov 17/2022

P&WC Proprietary Information. Subject to the restrictions on the back of the locator

© 2010 Pratt & Whitney Canada Corp.

PRINTED IN CANADA

**PT6C-72-41052**

Page 1 of 5

PRATT & WHITNEY CANADA  
**SERVICE BULLETIN**

P&WC S.B. No. 41052R2

TURBOSHAFT ENGINE  
OIL TRAY, ACCESSORY GEARBOX - REPLACEMENT/MODIFICATION OF

1. Planning Information (Cont'd)

H. Weight and Balance

None.

I. Electrical Load Data

Not changed.

J. Software Accomplishment Summary

Not applicable.

K. References

Illustrated Parts Catalog P/N 3045334 (PT6C-67C)  
Overhaul Manual P/N 3045333 (PT6C-67C)

L. Publications Affected

Illustrated Parts Catalog P/N 3045334 (PT6C-67C)

M. Interchangeability and Intermixability of Parts

Interchangeability - Refer to Para. 2.C.

Intermixability - Not changed.

2. Material Information

A. Industry Support Information

Not applicable.

B. Material - Cost and Availability

You can get the procurable parts listed in Para. 2.C. from any Pratt & Whitney Canada Parts Distribution Center.

The estimated total cost of new parts needed to replace old parts is \$4988.80 (US, 2022).

The new parts are available.

Nov 25/2010

Revision No. 2: Nov 17/2022

P&WC Proprietary Information. Subject to the restrictions on the back of the locator

**PT6C-72-41052**  
Page 2 of 5

# PRATT & WHITNEY CANADA SERVICE BULLETIN

P&WC S.B. No. 41052R2

## TURBOSHAFT ENGINE OIL TRAY, ACCESSORY GEARBOX - REPLACEMENT/MODIFICATION OF

### C. Material Necessary for Each Engine

The quantity of materials listed in this section is on a per Engine basis.

<u>New P/N</u>	<u>Keyword</u>	<u>Old P/N</u>	<u>Qty</u>	<u>Est. Unit List Price (\$US, 2010)</u>	<u>Instructions Disposition</u>
3076382-01	Tray Assy, Oil, Accessory Gearbox	3050853-01	1	4988.80	(A)(B)(C)

- (A) ONE WAY INTERCHANGEABLE - (ATA 200 Explanation Code 01):  
The old part can only replace the old part; the new part can replace the old and the new part.
- (B) To get the new part it is possible to make a modification to the old part, or you can get the new part from any Pratt & Whitney Canada Distribution Center.
- (C) Discard the part if it is unserviceable. Return a serviceable part to stock.

### D. Reidentified Parts

The following list of parts can be reworked:

<u>OLD P/N</u>	<u>NEW P/N</u>
3050853-01	3076382-01

### E. Tooling - Price and Availability

Not applicable.

### 3. Accomplishment Instructions

- A. Remove the parts in the Old P/N list in Para. 2.C., Material Information, in accordance with the overhaul manual instructions as follows:

- Ref. OHM 72-60-00 ACCESSORY GEARBOX - DISASSEMBLY.

- B. To modify the old tray assembly, do as follows:

- (1) Machine a slot in tray to dimensions shown (Ref. Fig. 1).
- (2) Break edges 0.003 to 0.015 inch (0.0762 to 0.3810 mm).

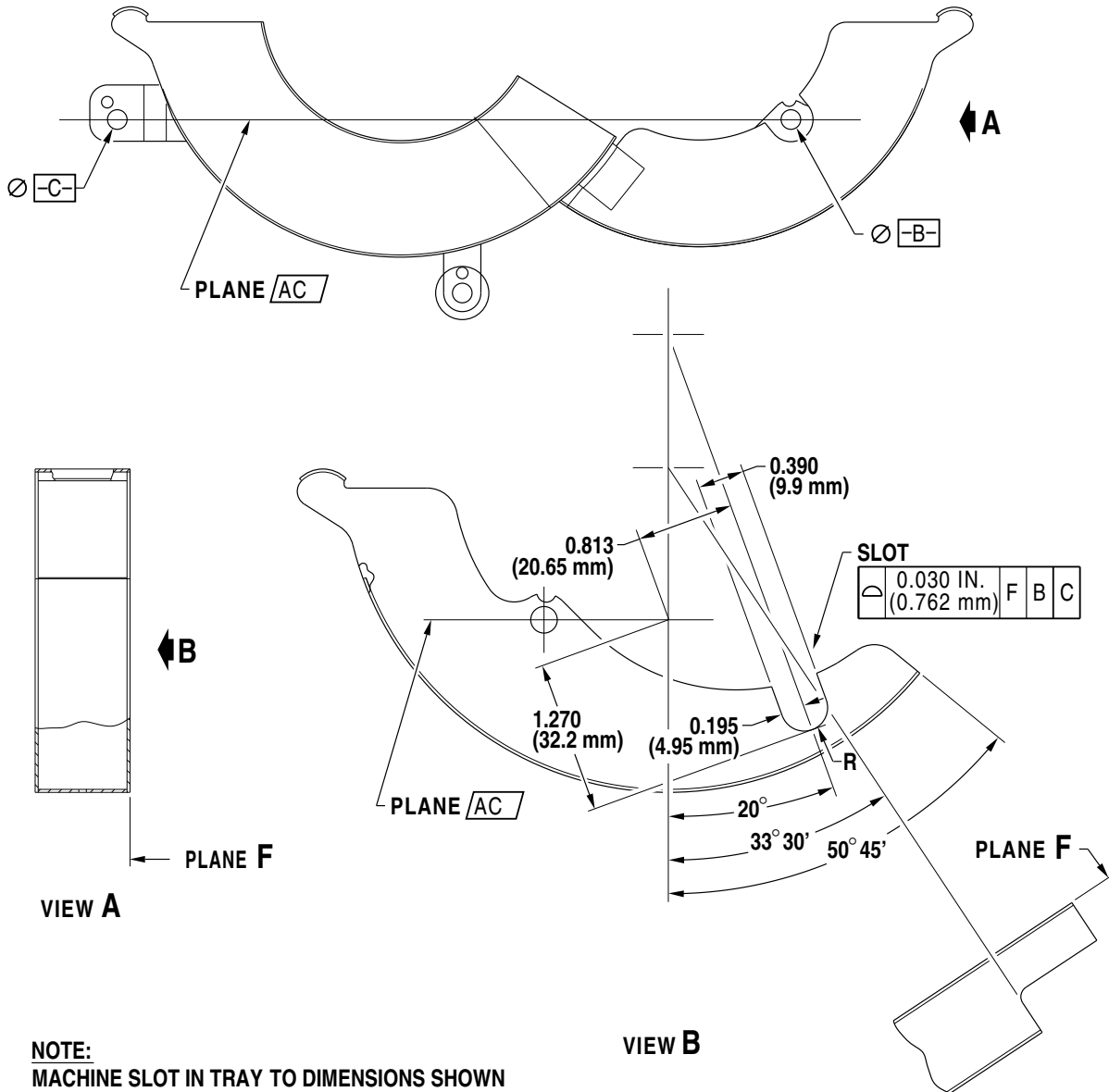
**CAUTION:** MAKE SURE THAT THE REMAINING ELECTROLYTE (ETCH SOLUTION) IS FULLY NEUTRAL AFTER YOU WRITE ON THE PART. ELECTROLYTE CAN CAUSE CORROSION ON THE PART.

- (3) Use the electrolyte etch procedure, 0.002 in. (0.05 mm) deep maximum, and put a line across the old part number. Write the new part number 3076382-01 in the same area.

# PRATT & WHITNEY CANADA SERVICE BULLETIN

P&WC S.B. No. 41052R2

TURBOSHAFT ENGINE  
OIL TRAY, ACCESSORY GEARBOX - REPLACEMENT/MODIFICATION OF



C176520

Tray Assembly - Modification  
Figure 1

Nov 25/2010  
Revision No. 2: Nov 17/2022

P&WC Proprietary Information. Subject to the restrictions on the back of the locator

PT6C-72-41052  
Page 4 of 5



PRATT & WHITNEY CANADA  
**SERVICE BULLETIN**

P&WC S.B. No. 41052R2

TURBOSHAFT ENGINE  
OIL TRAY, ACCESSORY GEARBOX - REPLACEMENT/MODIFICATION OF

3. Accomplishment Instructions (Cont'd)

C. Install the parts in the New P/N list in Para. 2.C., Material Information, in accordance with the overhaul manual instructions as follows:

- Ref. OHM 72-60-00 ACCESSORY GEARBOX - SUB-ASSEMBLY.

D. Write accomplishment of P&WC S.B. No. 41052 in the engine module log book.

4. Appendix

Not applicable.