
SERVICE BULLETIN

N° **139-398**

DATE: December 16, 2015

REV. : A - March 23, 2022

TITLE

ATA 52 – INSTALLATION OF FOOTSTEP FAST REMOVAL KIT

REVISION LOG

Helicopters that have complied with previous issue of this Service Bulletin do not need any additional action.

Revision A is issued to introduce the kit P/N 4G5260F00312 footstep fast removal (Part II added).

*An appropriate entry should be made in the aircraft log book upon accomplishment.
If ownership of aircraft has changed, please, forward to new owner.*

1. PLANNING INFORMATION

A. EFFECTIVITY

Part I: AB/AW139 helicopters from S/N 31005 thru 31399 and from S/N 41001 thru 41299 equipped with kit footstep passenger assy P/N 3P5260A00331 and P/N 3P5260A00431.

Part II: All AW139 helicopters from S/N 31400 to S/N 31699, from S/N 41300 to S/N 41499, from S/N 31700 onwards and from S/N 41500 onwards equipped with passenger footstep assy P/N 3G5260A34431 (LH) and P/N 3G5260A34531 (RH).

B. COMPLIANCE

At Customer's option.

C. CONCURRENT REQUIREMENTS

N.A.

D. REASON

To provide all necessary instructions on how to perform the installation of the footstep fast removal kit P/N 4G5260F00311 and P/N 4G5260F00312.

E. DESCRIPTION

This Service Bulletin provides all necessary instructions to perform the installation of the footstep fast removal kit P/N 4G5260F00311 (Part I) and P/N 4G5260F00312 (Part II).

The kit has been developed in order to improve and speed up the removal and installation of both the left and right passenger footsteps.

It is mainly composed of n°6 footstep supports, to be installed on LH and RH passenger footsteps, and n°8 fix supports, to be installed on the LH and RH side existing passenger footstep structural provision.

For each side, the supports are quick connected by means of n°6 quick-disconnect pins.

F. APPROVAL

The technical content of this Service Bulletin is approved under the authority of DOA nr. EASA.21.J.005. For helicopters registered under other Aviation Authorities, before applying the Service Bulletin, applicable Aviation Authority approval must be checked within Leonardo Helicopters customer portal.

EASA states mandatory compliance with inspections, modifications or technical directives and related time of compliance by means of relevant Airworthiness Directives. If an aircraft listed in the effectivity embodies a modification or repair not LHD certified and affecting the content of this Service Bulletin, it is responsibility of the Owner/Operator to obtain a formal approval by Aviation Authority having jurisdiction on the aircraft, for any adaptation necessary before incorporation of the present Service Bulletin.

G. MANPOWER

To comply with this Service Bulletin the following Maintenance-Man-Hours (MMH) are deemed necessary:

Part I: approximately twenty-four (24) MMH.

Part II: approximately ten (10) MMH.

Maintenance-Man-Hours are based on hands-on time and can change with personnel and facilities available.

H. WEIGHT AND BALANCE

PART I

WEIGHT (Kg)	ARM (mm)	MOMENT (Kgmm)
		1,68
LONGITUDINAL BALANCE	5059	8.499,12
LATERAL BALANCE	0	0

PART II

WEIGHT (Kg)	ARM (mm)	MOMENT (Kgmm)
		2,6
LONGITUDINAL BALANCE	5059	13.153,4
LATERAL BALANCE	0	0

I. REFERENCES

1) PUBLICATIONS

Following Data Modules refer to AMP:

<u>DATA MODULE</u>	<u>DESCRIPTION</u>	<u>PART</u>
DM01 39-A-00-20-00-00A-120A-A	Helicopter on ground for a safe maintenance	I, II
DM02 39-A-20-00-00-00A-711A-A	Threaded fasteners - Tighten procedure	I, II
DM03 39-A-52-44-01-00A-520A-A	Access panels - Remove procedure	II
DM04 39-A-52-44-01-00A-720A-A	Access panels - Install procedure	II
DM05 39-B-52-63-01-00A-520A-K	Left cabin fixed footstep - Remove procedure	I, II
DM06 39-B-52-63-02-00A-520A-K	Right cabin fixed footstep - Remove procedure	I, II
DM07 39-B-52-69-01-00A-720A-K	Forward left fixed support - Install procedure	II
DM08 39-B-52-69-02-00A-720A-K	Forward right fixed support - Install procedure	II
DM09 39-B-52-69-03-00A-720A-K	Middle left fixed support - Install procedure	II
DM10 39-B-52-69-04-00A-720A-K	Middle right fixed support - Install procedure	II
DM11 39-A-52-69-05-00A-720A-K	Aft left rear support - Install procedure	II
DM12 39-A-52-69-06-00A-720A-K	Aft right rear support - Install procedure	II
DM13 39-A-52-69-07-00A-720A-K	Aft left forward support - Install procedure	II
DM14 39-A-52-69-08-00A-720A-K	Aft right forward support - Install procedure	II
DM15 39-A-52-69-09-00A-920A-K	Forward left support (Footstep) - Replacement	II
DM16 39-A-52-69-10-00A-920A-K	Forward right support (Footstep) - Replacement	II
DM17 39-A-52-69-11-00A-920A-K	Middle left support (Footstep) - Replacement	II
DM18 39-A-52-69-12-00A-920A-K	Middle right support (Footstep) - Replacement	II
DM19 39-A-52-69-13-00A-920A-K	Aft left support (Footstep) - Replacement	II
DM20 39-A-52-69-14-00A-920A-K	Aft right support (Footstep) - Replacement	II

2) ACRONYMS & ABBREVIATIONS

AMDI	Aircraft Material Data Information
AMP	Aircraft Maintenance Publication
AR	As Required
DM	Data Module
DOA	Design Organization Approval
EASA	European Aviation Safety Agency
FWD	Forward
ITEP	Illustrated Tools and Equipment Publication
LH	Left-hand
LHD	Leonardo Helicopters Division
MMH	Maintenance-Man-Hours
N.A.	Not Applicable
P/N	Part Number
RH	Right-hand

3) ANNEX

N.A.

J. PUBLICATIONS AFFECTED

AW139 Aircraft Maintenance Publication (AMP)

K. SOFTWARE ACCOMPLISHMENT SUMMARY

N.A.

2. MATERIAL INFORMATION

A. REQUIRED MATERIALS

1) PARTS

PART I

#	P/N	ALTERNATIVE P/N	DESCRIPTION	Q.TY	LVL	NOTE	LOG P/N
1	4G5260F00311		FOOTSTEP FAST REMOVAL KIT	REF	.		-
2	3G5260A33051		FWD fix support	2	..		139-398L1
3	3G5260A33151		FWD footstep support	2	..		139-398L1
4	3G5260A33251		Central fix support	2	..		139-398L1
5	3G5260A33351		Central footstep support	2	..		139-398L1
6	3G5260A33451		Aft fix support LH	1	..		139-398L1
7	3G5260A33551		Aft fix support RH	1	..		139-398L1
8	3G5260A33651		Aft fix support LH	1	..		139-398L1
9	3G5260A33751		Aft fix support RH	1	..		139-398L1
10	3G5260A33851		Aft footstep LH support	1	..		139-398L1
11	3G5260A33951		Aft footstep RH support	1	..		139-398L1
12	A161A0432		Washer	12	..		139-398L1
13	A964A2F015B		Lanyard	12	..		139-398L1
14	MS14145L6		Nut	2	..		139-398L1
15	MS17825-4		Nut	8	..		139-398L1
16	MS17825-6		Nut	6	..		139-398L1
17	MS21043-4		Nut	20	..		139-398L1
18	MS21043-6		Nut	2	..		139-398L1
19	MS24665-136		Cotter pin	16	..		139-398L1
20	MS24665-285		Cotter pin	2	..		139-398L1
21	NAS1149D0432K		Washer	8	..		139-398L1
22	NAS1149D0632K		Washer	2	..		139-398L1
23	NAS1149F0632P		Washer	8	..		139-398L1
24	NAS1149F0663P		Washer	6	..		139-398L1
25	NAS1354DC7C24D		Pin	8	..		139-398L1
26	NAS1355DC7C40D		Pin	4	..		139-398L1
27	NAS5310E4P6		Screw	8	..		139-398L1
28	NAS5310E6P10		Screw	2	..		139-398L1
29	NAS5310E6P4		Screw	2	..		139-398L1
30	NAS5316E4P4		Screw	12	..		139-398L1
31	NAS5316E4P5		Screw	8	..		139-398L1
32	NAS5316E4P6		Screw	4	..		139-398L1
33	NAS6206-7D		Bolt	2	..		139-398L1
34	NAS6604D10		Bolt	2	..		139-398L1
35	NAS6604D11		Bolt	4	..		139-398L1
36	NAS6604D8		Bolt	2	..		139-398L1
37	NAS6606D10		Bolt	4	..		139-398L1
38	NAS6606D9		Bolt	2	..		139-398L1
39	999-0500-62-1		Tag	12	..		139-398L1

PART II

#	P/N	ALTERNATIVE P/N	DESCRIPTION	Q.TY	LVL	NOTE	LOG P/N
40	4G5260F00312		FOOTSTEP FAST REMOVAL KIT	REF	.		-
41	3G5260A33051		FWD fix support	2	..		139-398L2
42	3G5260A33151		FWD footstep support	2	..		139-398L2
43	3G5260A33251		Central fix support	2	..		139-398L2
44	3G5260A33351		Central footstep support	2	..		139-398L2
45	3G5260A33451		Aft fix support LH	1	..		139-398L2
46	3G5260A33551		Aft fix support RH	1	..		139-398L2
47	3G5260A33651		Aft fix support LH	1	..		139-398L2
48	3G5260A33751		Aft fix support RH	1	..		139-398L2
49	3G5260A33852		Aft footstep LH support	1	..		139-398L2
50	3G5260A33952		Aft footstep RH support	1	..		139-398L2
51	A964A2F015H		Lanyard	12	..		139-398L2
52	AW010TY001FB03B		Washer	6	..		139-398L2
53	AW010TY003FB03B		Washer	6	..		139-398L2
54	MS17825-4		Nut	6	..		139-398L2
55	MS17825-6		Nut	6	..		139-398L2
56	MS21043-4		Nut	20	..		139-398L2
57	MS21043-6		Nut	2	..		139-398L2
58	MS24665-136		Cotter pin	12	..		139-398L2
59	MS24665-285		Cotter pin	2	..		139-398L2
60	MS24665-73		Cotter pin	2	..		139-398L2
61	NAS1149D0432K		Washer	6	..		139-398L2
62	NAS1149D0632K		Washer	2	..		139-398L2
63	NAS1149F0432P		Washer	8	..		139-398L2
64	NAS1149F0632P		Washer	6	..		139-398L2
65	NAS1354DC7C24D		Pin	8	..		139-398L2
66	NAS1355DC7C40D		Pin	4	..		139-398L2
67	NAS5310E4P6		Screw	8	..		139-398L2
68	NAS5310E6P10		Screw	2	..		139-398L2
69	NAS5310E6P4		Screw	2	..		139-398L2
70	NAS5316E4P4		Screw	12	..		139-398L2
71	NAS5316E4P5		Screw	8	..		139-398L2
72	NAS5316E4P6		Screw	4	..		139-398L2
73	NAS6604D12		Bolt	2	..		139-398L2
74	NAS6604D13		Bolt	4	..		139-398L2
75	NAS6606D11		Bolt	2	..		139-398L2
76	NAS6606D12		Bolt	4	..		139-398L2
77	999-0500-62-1		Tag	12	..		139-398L2

2) CONSUMABLES

Refer to AMDI for the consumable materials required to comply with the AMP DM referenced in the accomplishment instructions.

3) LOGISTIC MATRIX

In order to apply this Service Bulletin, the following Logistic P/N can be ordered in accordance to the applicable notes:

LOGISTIC P/N	Q.TY (PER HELO)	NOTE	PART
139-398L1	1		I
139-398L2	1		II

NOTE

N.A.

B. SPECIAL TOOLS

The following special tools, or equivalent, are necessary to accomplish this Service Bulletin:

#	P/N	DESCRIPTION	Q.TY	NOTE	PART
78	Commercial	Torx T30 screwdriver	1		I, II
79	Commercial	Torx T40 screwdriver	1		I, II

Refer also to ITEP for the special tools required to comply with the AMP DM referenced in the accomplishment instructions.

SPECIAL TOOLS NOTE

N.A.

C. INDUSTRY SUPPORT INFORMATION

Customization

3. ACCOMPLISHMENT INSTRUCTIONS

GENERAL NOTES

- a) Place an identification tag on all components that are re-usable, including the attaching hardware that has been removed to gain access to the modification area and adequately protect them until their later re-use.
- b) Shape the cables in order to prevent interference with the structure and the other existing installations, using where necessary suitable lacing cords.
- c) During the installation of bonding braids or components requiring grounding, clean the surface structure in order to obtain a good ground contact.
- d) All lengths are in mm.

PART I

1. In accordance with AMP DM 39-A-00-20-00-00A-120A-A prepare the helicopter on ground for a safe maintenance. Disconnect the battery, all electrical power sources and/or the external power supply.
2. Perform the installation of footstep fast removal kit P/N 4G5260F00311 on LH side as described in the following procedure:
 - 2.1 With reference to Figures 2, 3 and 4 and in accordance with AMP DM DM0539-B-52-63-01-00A-520A-K remove the left passenger footstep assy P/N 3P5260A00331 from the helicopter. Discard the fixing hardware and the special washer P/N 3P5260A12351.
 - 2.2 With reference to Figure 5, remove the LH forward main landing gear fairing.
 - 2.3 With reference to Figure 2 Detail A2 and Section AB-AB, temporarily install the FWD fix support P/N 3G5260A33051 on the helicopter by means of n°2 screws P/N NAS5316E4P6 and screw P/N NAS5310E6P10.
 - 2.4 With reference to Figure 3 Detail B2 and Section C-C, temporarily install the central fix support P/N 3G5260A33251 on the helicopter by means of n°4 screws P/N NAS5316E4P5.
 - 2.5 With reference to Figure 4 Detail D2 (BECOMES) and Figure 5 Section FA-FA, temporarily install the AFT fix support LH P/N 3G5260A33451 on the helicopter by means of bolt P/N NAS6604D8, n°2 bolts P/N NAS6604D11, bolt P/N NAS6604D10, n°6 washers P/N A161A0432 and n°4 nuts P/N MS17825-4.

- 2.6 With reference to Figure 4 View E2 (BECOMES) and Figure 5 Section FB-FB, temporarily install the AFT fix support LH P/N 3G5260A33651 on the helicopter by means of n°2 bolts P/N NAS6606D10, bolt P/N NAS6606D9, bolt P/N NAS6206-7D, n°3 washers P/N NAS1149F0663P, n°4 washers P/N NAS1149F0632P, n°3 nuts P/N MS17825-6 and nut P/N MS14145L6.
- 2.7 With reference to Figure 5 Section FD-FD, perform the indicated cut-out on the LH forward main landing gear fairing. Coordinate with aft fix support LH P/N 3G5260F33451.
- 2.8 With reference to Figure 2 Section AB-AB and Figure 6 Detail F, install the FWD footstep support P/N 3G5260A33151, n°2 tags P/N 999-0500-62-1 and n°2 lanyards P/N A964A2F015B on the LH footstep assy by means of n°2 screws P/N NAS5316E4P4, n°2 nuts P/N MS21043-4, screw P/N NAS5310E6P4, washer P/N NAS1149D0632K and nut P/N MS21043-6.
- 2.9 With reference to Figure 3 Section C-C and Figure 6 Detail G, install the central footstep support P/N 3G5260A33351, n°2 tags P/N 999-0500-62-1 and n°2 lanyards P/N A964A2F015B on the LH footstep assy by means of n°4 screws P/N NAS5316E4P4, n°4 nuts P/N MS21043-4 and n°2 washer P/N NAS1149D0432K.
- 2.10 With reference to Figure 6 Detail N, countersink the n°2 footstep assemblies existing holes to 130°.
- 2.11 With reference to Figure 6 Detail M, countersink the n°2 footstep assemblies existing holes to 130°.
- 2.12 With reference to Figure 6 Detail H, install the AFT footstep support LH P/N 3G5260A33851, n°2 tags P/N 999-0500-62-1 and n°2 lanyards P/N A964A2F015B on the LH footstep assy by means of n°4 screws P/N NAS5310E4P6, n°4 nuts P/N MS21043-4, and n°2 washers P/N NAS1149D0432K.
- 2.13 With reference to Figure 2 Side View, secure n°2 quick release pins P/N NAS1354DC7C24D to the installed lanyards.
- 2.14 With reference to Figure 3 Side View, secure n°2 quick release pins P/N NAS1354DC7C24D to the installed lanyards.
- 2.15 With reference to Figure 5 View F, secure n°2 quick release pins P/N NAS1355DC7C40D to the installed lanyards.
- 2.16 With reference to Figures 2, 3 and 5 install the LH footstep assy on the helicopter by means of existing quick release pins.
- 2.17 If necessary, perform little adjustments on the fix supports to ensure a correct alignment between footstep supports and fix supports.

- 2.18 Check that each pin works correctly.
- 2.19 Tighten each installed screws and nuts at the standard torque value in accordance with AMP DM 39-A-20-00-00-00A-711A-A. For Figure 2 Detail A2 and Figure 3 Detail B2 refer to the torque indicated for Part II.
- 2.20 With reference to Figure 5 Section FA-FA and section FB-FB lock all the installed nuts by means of n°7 cotter pins P/N MS24665-136 and n°1 cotter pin P/N MS24665-285.
- 2.21 Reinstall the main landing gear LH forward fairing by means of the existing hardware.
3. Perform the installation of footstep fast removal kit P/N 4G5260F00311 on RH side as described in the following procedure:
 - 3.1 With reference to Figures 2, 3 and 4 and in accordance with AMP DM 39-B-52-63-02-00A-520A-K remove the right passenger footstep assy P/N 3P5260A00431 from the helicopter. Discard the fixing hardware and the special washer P/N 3P5260A12451.
 - 3.2 With reference to Figure 5, remove the RH forward main landing gear fairing.
 - 3.3 With reference to Figure 2 Detail A2 and Section AB-AB, temporarily install the FWD fix support P/N 3G5260A33051 on the helicopter by means of n°2 screws P/N NAS5316E4P6 and screw P/N NAS5310E6P10.
 - 3.4 With reference to Figure 3 Detail B2 and Section C-C, temporarily install the central fix support P/N 3G5260A33251 on the helicopter by means of n°4 screws P/N NAS5316E4P5.
 - 3.5 With reference to Figure 4 Detail D2 (BECOMES) and Figure 5 Section FA-FA, temporarily install the AFT fix support RH P/N 3G5260A33551 on the helicopter by means of bolt P/N NAS6604D8, n°2 bolts P/N NAS6604D11, bolt P/N NAS6604D10, n°6 washers P/N A161A0432 and n°4 nuts P/N MS17825-4.
 - 3.6 With reference to Figure 4 View E2 (BECOMES) and Figure 5 Section FB-FB, temporarily install the AFT fix support RH P/N 3G5260A33751 on the helicopter by means of n°2 bolts P/N NAS6606D10, bolt P/N NAS6606D9, bolt P/N NAS6206-7D, n°3 washers P/N NAS1149F0663P, n°4 washers P/N NAS1149F0632P, n°3 nuts P/N MS17825-6 and nut P/N MS14145L6.
 - 3.7 With reference to Figure 5 Section FD-FD, perform the indicated cut-out on the RH forward main landing gear fairing. Coordinate with aft fix support RH P/N 3G5260F33551.
 - 3.8 With reference to Figure 2 Section AB-AB and Figure 6 Detail F, install the FWD footstep support P/N 3G5260A33151, n°2 tags P/N 999-0500-62-1 and n°2 lanyards P/N A964A2F015B on the RH footstep assy by means of n°2 screws

- P/N NAS5316E4P4, n°2 nuts P/N MS21043-4, screw P/N NAS5310E6P4, washer P/N NAS1149D0632K and nut P/N MS210436.
- 3.9 With reference to Figure 3 Section C-C and Figure 6 Detail G, install the central footstep support P/N 3G5260A33351, n°2 tags P/N 999-0500-62-1, and n°2 lanyards P/N A964A2F015B on the RH footstep assy by means of n°4 screws P/N NAS5316E4P4, n°4 nuts P/N MS21043-4 and n°2 washers P/N NAS1149D0432K.
 - 3.10 With reference to Figure 6 Detail N, countersink the n°2 footstep assemblies existing holes to 130°.
 - 3.11 With reference to Figure 6 Detail M, countersink the n°2 footstep assemblies existing holes to 130°.
 - 3.12 With reference to Figure 6 Detail H, install the AFT footstep support RH P/N 3G5260A33951, n°2 tags P/N 999-0500-62-1 and n°2 lanyards P/N A964A2F015B on the RH footstep assy by means of n°4 screws P/N NAS5316E4P6, n°4 nuts P/N MS21043-4 and n°2 washers P/N NAS1149D0432K.
 - 3.13 With reference to Figure 2 Side View, secure n°2 quick release pins P/N NAS1354DC7C24D to the installed lanyards.
 - 3.14 With reference to Figure 3 Side View, secure n°2 quick release pins P/N NAS1354DC7C24D to the installed lanyards.
 - 3.15 With reference to Figure 5 View F, secure n°2 quick release pins P/N NAS1355DC7C40D to the installed lanyards.
 - 3.16 With reference to Figures 2, 3 and 5 install the RH footstep assy on the helicopter by means of existing quick release pins.
 - 3.17 If necessary, perform little adjustments on the fix supports to ensure a correct alignment between footstep supports and fix supports.
 - 3.18 Check that each pin works correctly.
 - 3.19 Tighten each installed screws and nuts at the standard torque value in accordance with AMP DM 39-A-20-00-00-00A-711A-A. For Figure 2 Detail A2 and Figure 3 Detail B2 refer to the torque indicated for Part II.
 - 3.20 With reference to Figure 5 Section FA-FA and section FB-FB lock all the installed nuts by means of n°7 cotter pins P/N MS24665-136 and n°1 cotter pin P/N MS24665-285.
 - 3.21 Reinstall the main landing gear RH forward fairing by means of the existing hardware.
4. In accordance with weight and balance changes, update the Chart A (see Rotorcraft Flight Manual, Part II, section 6).

5. Return the helicopter to flight configuration and record for compliance with Part I of this Service Bulletin on the helicopter logbook.
6. Send the attached compliance form to the following mail box:
engineering.support.lhd@leonardo.com

As an alternative, gain access to My Communications section on Leonardo WebPortal and compile the "Service Bulletin Application Communication".

PART II

1. In accordance with AMP DM 39-A-00-20-00-00A-120A-A prepare the helicopter on ground for a safe maintenance. Disconnect the battery, all electrical power sources and/or the external power supply.
2. Perform the installation of footstep fast removal kit P/N 4G5260F00312 on LH side as described in the following procedure:
 - 2.1 With reference to Figures 2, 3 and 4 and in accordance with AMP DM 39-B-52-63-01-00A-520A-K remove the left passenger footstep assy P/N 3P5260A34431 from the helicopter.
 - 2.2 With reference to Figure 2 Detail A2, Section AB-AB, and in accordance with the applicable steps given in AMP DM 39-B-52-69-01-00A-720A-K, temporarily install the FWD fix support P/N 3G5260A33051 on the helicopter.
 - 2.3 With reference to Figure 3 Detail B2, Section C-C and in accordance with the applicable steps given in AMP DM 39-B-52-69-03-00A-720A-K, temporarily install the central fix support P/N 3G5260A33251 on the helicopter.
 - 2.4 With reference to Figure 7, and in accordance with AMP DM 39-A-52-44-01-00A-520A-A remove the LH forward main landing gear fairing P/N 3G5339A00756 (Access Panel 740AL).
 - 2.5 With reference to Figure 4 Detail D2 (BECOMES), Figure 7 Section FA-FA, and in accordance with the applicable steps given in in AMP DM 39-A-52-69-07-00A-720A-K, temporarily install the AFT fix support LH P/N 3G5260A33451 on the helicopter.
 - 2.6 With reference to Figure 4 View E2 (BECOMES), Figure 7 Section FB-FB, and in accordance with the applicable steps given in AMP DM 39-A-52-69-05-00A-720A-K, temporarily install the AFT fix support LH P/N 3G5260A33651 on the helicopter.
 - 2.7 With reference to Figure 7 Section FD-FD, perform the indicated cut-out on the LH forward main landing gear fairing P/N 3G5339A00756 (Access Panel 740AL). Make sure that the fairing correctly matches the AFT fix support LH P/N 3G5260F33451.
 - 2.8 With reference to Figure 2 Section AB-AB and Side View, Figure 6 Detail F, and in accordance with the applicable steps given in AMP DM 39-A-52-69-09-00A-920A-K, install the FWD footstep support P/N 3G5260A33151, n°2 quick release pins P/N NAS1354DC7C24D, n°2 tags P/N 999-0500-62-1 and n°2 lanyards P/N A964A2F015H on the LH footstep assy.
 - 2.9 With reference to Figure 3 Section C-C and Side View, Figure 6 Detail G, and in accordance with the applicable steps given in AMP DM

- 39-A-52-69-11-00A-920A-K, install the central footstep support P/N 3G5260A33351, n°2 quick release pins P/N NAS1354DC7C24D, n°2 tags P/N 999-0500-62-1 and n°2 lanyards P/N A964A2F015H on the LH footstep assy.
- 2.10 With reference to Figure 6 Detail N, countersink the n°2 footstep assemblies existing holes to 130°.
 - 2.11 With reference to Figure 6 Detail M, countersink the n°2 footstep assemblies existing holes to 130°.
 - 2.12 With reference to Figure 6 Detail H, Figure 7 View F, and in accordance with the applicable steps given in AMP DM 39-A-52-69-13-00A-920A-K, install the AFT footstep support LH P/N 3G5260A33852, n°2 quick release pins P/N NAS1354DC7C24D, n°2 tags P/N 999-0500-62-1 and n°2 lanyards P/N A964A2F015H on the LH footstep assy.
 - 2.13 With reference to Figures 2, 3 and 7 install the LH footstep assy on the helicopter by means of n°4 quick release pins P/N NAS1355DC7C40D and n°2 quick release pins P/N NAS1354DC7C24D.
 - 2.14 If necessary, perform little adjustments on the fix supports to ensure a correct alignment between footstep supports and fix supports.
 - 2.15 Check that each pin works correctly.
 - 2.16 Tighten each installed screws and nuts at the standard torque value in accordance with AMP DM 39-A-20-00-00-00A-711A-A.
 - 2.17 With reference to Figure 7 Section FA-FA and section FB-FB lock all the installed nuts by means of by means of n°6 cotter pins P/N MS24665-136, n°1 cotter pin P/N MS24665-285 and n°1 cotter pin P/N MS24665-73.
 - 2.18 With reference to Figure 7 and in accordance with AMP DM 39-A-52-44-01-00A-720A-A install the LH forward main landing gear fairing (Access Panel 740AL) by means of the existing hardware.
3. Perform the installation of footstep fast removal kit P/N 4G5260F00312 on RH side as described in the following procedure:
 - 3.1 With reference to Figures 2, 3 and 4 and in accordance with AMP DM 39-B-52-63-02-00A-520A-K remove the right passenger footstep assy P/N 3P5260A34531 from the helicopter.
 - 3.2 With reference to Figure 2 Detail A2 and Section AB-AB, in accordance with the applicable steps given in AMP DM 39-B-52-69-02-00A-720A-K, temporarily install the FWD fix support P/N 3G5260A33051 on the helicopter.
 - 3.3 With reference to Figure 3 Detail B2 and Section C-C, and in accordance with the applicable steps given in AMP DM 39-B-52-69-04-00A-720A-K, temporarily install the central fix support P/N 3G5260A33251 on the helicopter.

- 3.4 With reference to Figure 7 and in accordance with AMP DM 39-A-52-44-01-00A-520A-A remove the RH forward main landing gear fairing P/N 3G5339A00656 (Access Panel 750AR).
- 3.5 With reference to Figure 4 Detail D2 (BECOMES), Figure 7 Section FA-FA, and in accordance with the applicable steps given in AMP DM 39-A-52-69-08-00A-720A-K, temporarily install the AFT fix support RH P/N 3G5260A33551 on the helicopter.
- 3.6 With reference to Figure 4 View E2 (BECOMES), Figure 7 Section FB-FB, in accordance with the applicable steps given in AMP DM 39-A-52-69-06-00A-720A-K, temporarily install the AFT fix support RH P/N 3G5260A33751 on the helicopter.
- 3.7 With reference to Figure 7 Section FD-FD, perform the indicated cut-out on the RH forward main landing gear fairing P/N 3G5339A00656 (Access Panel 750AR). Make sure that the fairing correctly matches the aft fix support RH P/N 3G5260F33551.
- 3.8 With reference to Figure 2 Section AB-AB and Side View, Figure 6 Detail F, and in accordance with the applicable steps given in AMP DM 39-A-52-69-10-00A-920A-K, install the FWD footstep support P/N 3G5260A33151, n°2 quick release pins P/N NAS1354DC7C24D, n°2 tags P/N 999-0500-62-1 and n°2 lanyards P/N A964A2F015H on the RH footstep assy.
- 3.9 With reference to Figure 3 Section C-C and Side View, Figure 6 Detail G, and in accordance with the applicable steps given in AMP DM 39-A-52-69-12-00A-920A-K, install the central footstep support P/N 3G5260A33351, n°2 quick release pins P/N NAS1354DC7C24D, n°2 tags P/N 999-0500-62-1 and n°2 lanyards P/N A964A2F015H on the RH footstep assy.
- 3.10 With reference to Figure 6 Detail N, countersink the n°2 footstep assemblies existing holes to 130°.
- 3.11 With reference to Figure 6 Detail M, countersink the n°2 footstep assemblies existing holes to 130°.
- 3.12 With reference to Figure 6 Detail H, Figure 7 View F, and in accordance with the applicable steps given in AMP DM 39-A-52-69-14-00A-920A-K, install the AFT footstep support RH P/N 3G5260A33952, n°2 quick release pins P/N NAS1354DC7C24D, n°2 tags P/N 999-0500-62-1 and n°2 lanyards P/N A964A2F015H on the RH footstep assy.
- 3.13 With reference to Figures 2, 3 and 7 install the RH footstep assy on the helicopter by means of n°4 quick release pins P/N NAS1355DC7C40D and n°2 quick release

pins P/N NAS1354DC7C24D.

- 3.14 If necessary, perform little adjustments on the fix supports to ensure a correct alignment between footstep supports and fix supports.
- 3.15 Check that each pin works correctly.
- 3.16 Tighten each installed screws and nuts at the standard torque value in accordance with AMP DM 39-A-20-00-00-00A-711A-A.
- 3.17 With reference to Figure 7 Section FA-FA and section FB-FB lock all the installed nuts by means of n°6 cotter pins P/N MS24665-136, n°1 cotter pin P/N MS24665-285 and n°1 cotter pin P/N MS24665-73.
- 3.18 With reference to Figure 7 and in accordance with AMP DM 39-A-52-44-01-00A-720A-A install the RH forward main landing gear fairing (Access Panel 750AR) by means of the existing hardware.
4. In accordance with weight and balance changes, update the Chart A (see Rotorcraft Flight Manual, Part II, section 6).
5. Return the helicopter to flight configuration and record for compliance with Part II of this Service Bulletin on the helicopter logbook.
6. Send the attached compliance form to the following mail box:

engineering.support.lhd@leonardo.com

As an alternative, gain access to My Communications section on Leonardo WebPortal and compile the “Service Bulletin Application Communication”.

KIT FOOTSTEP FAST REMOVAL KIT
4G5260F00311 (PART I)
4G5260F00312 (PART II)

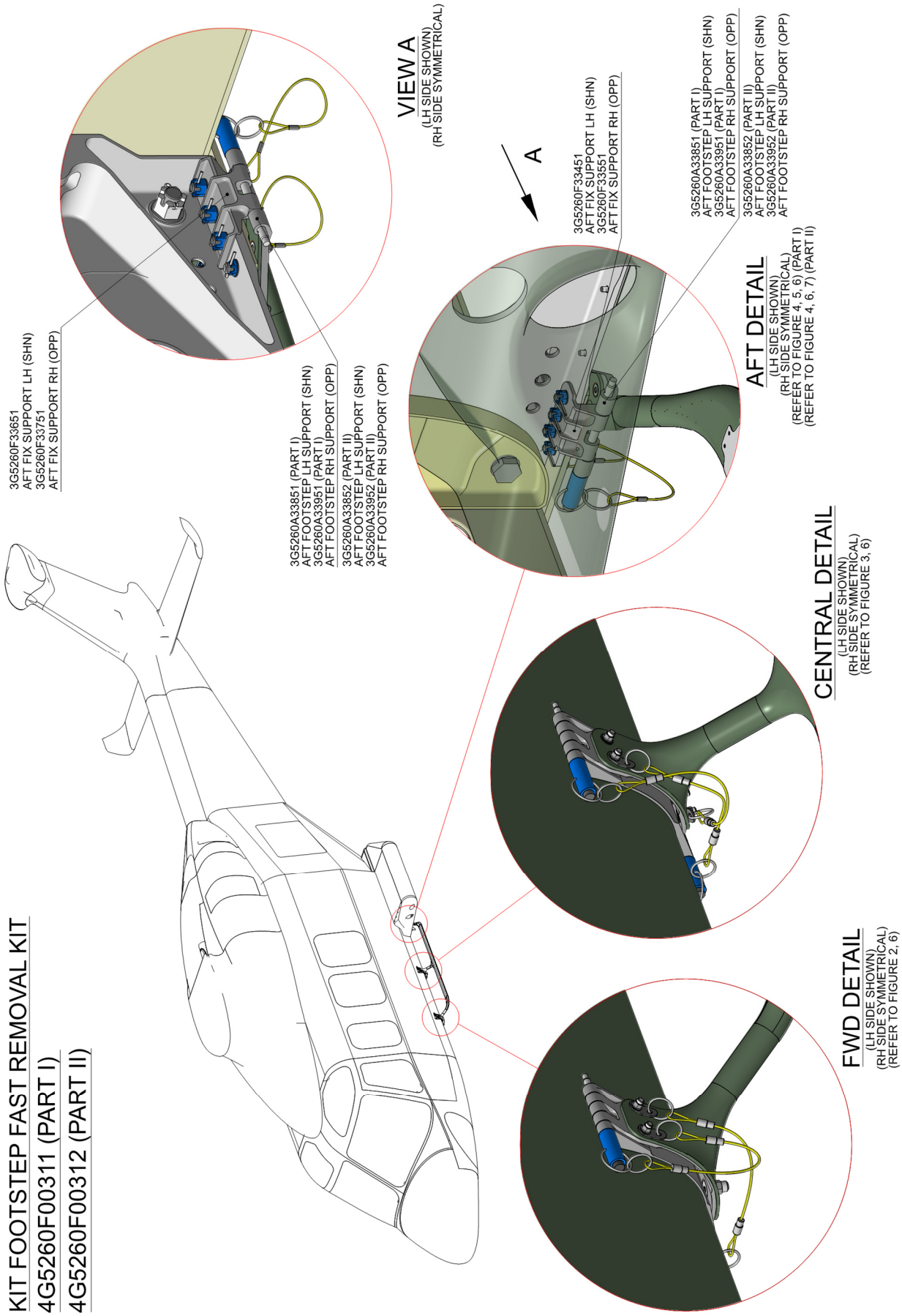


Figure 1

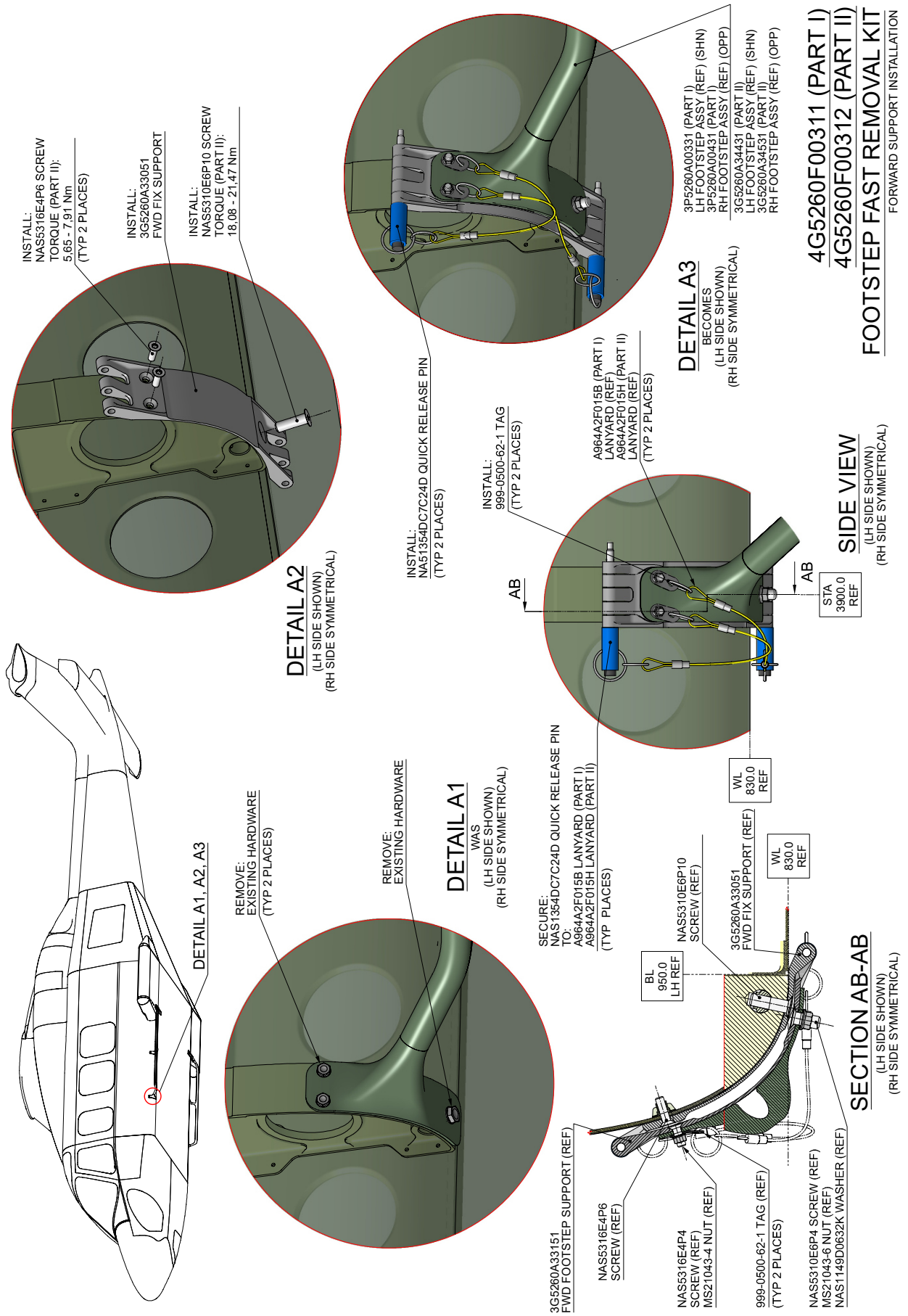


Figure 2

FOOTSTEP FAST REMOVAL KIT
4G5260F00311 (PART I)
4G5260F00312 (PART II)
REAR SUPPORT INSTALLATION

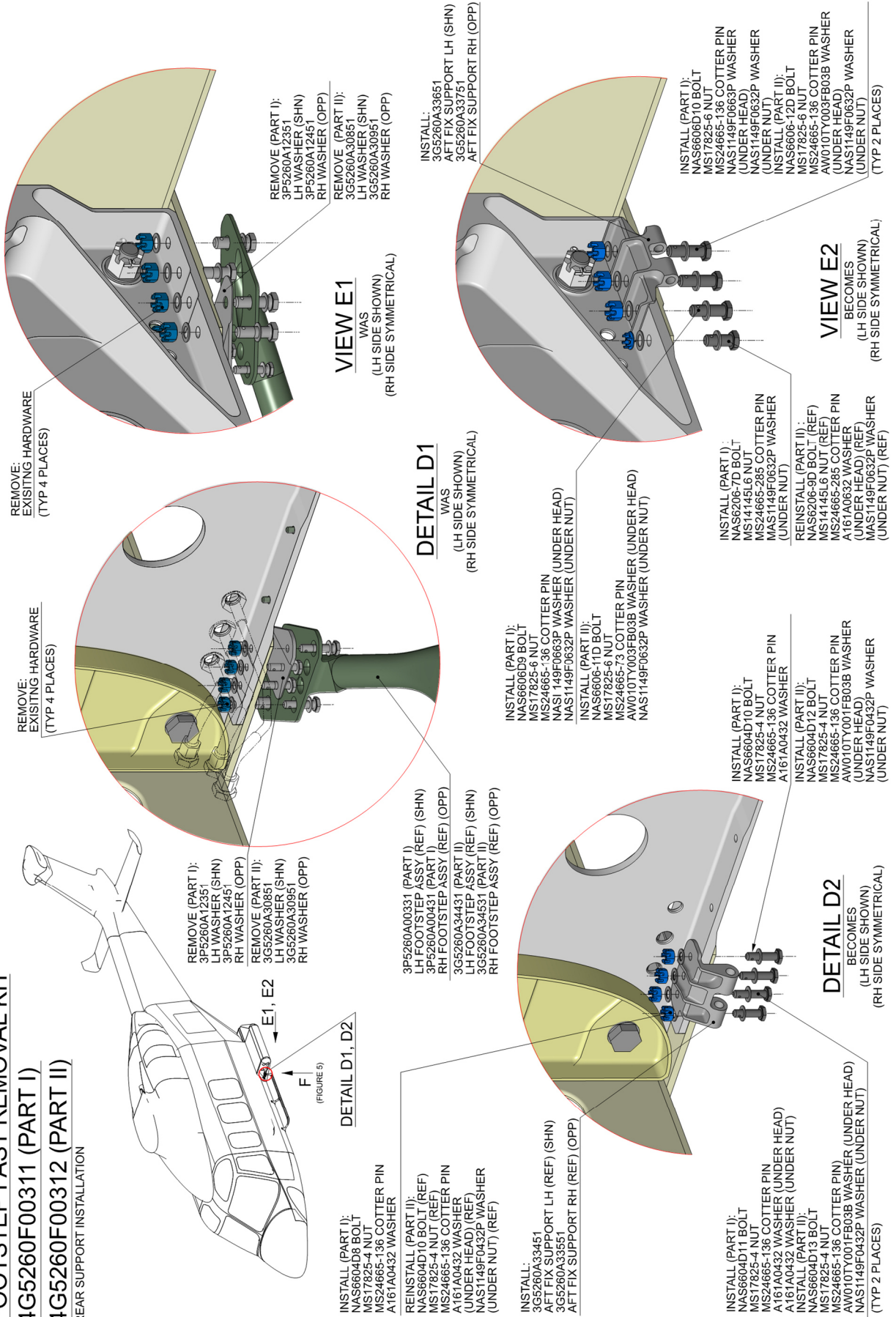


Figure 4

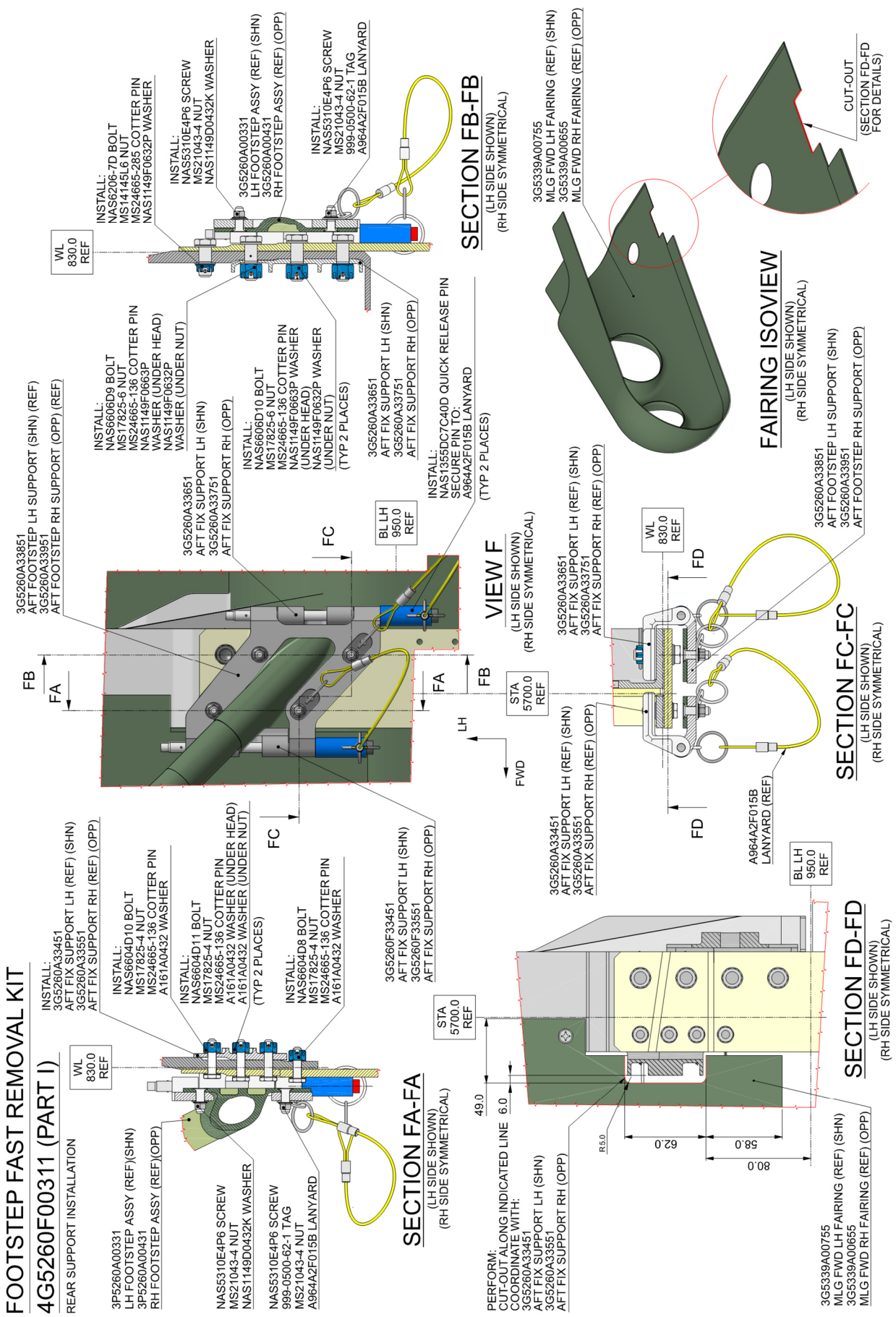


Figure 5

S.B. N°139-398

DATE: December 16, 2015

REVISION: A - March 23, 2022

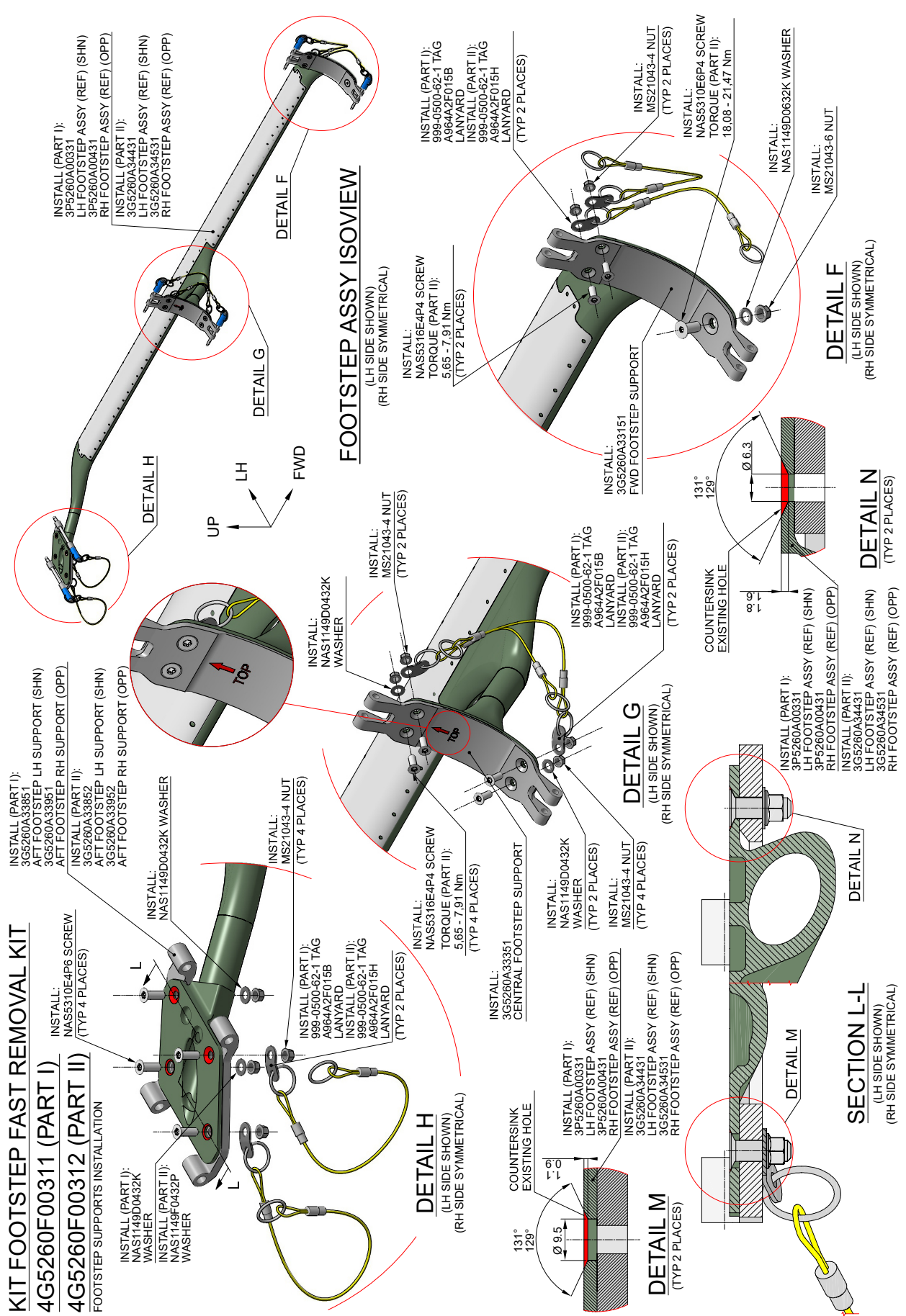


Figure 6

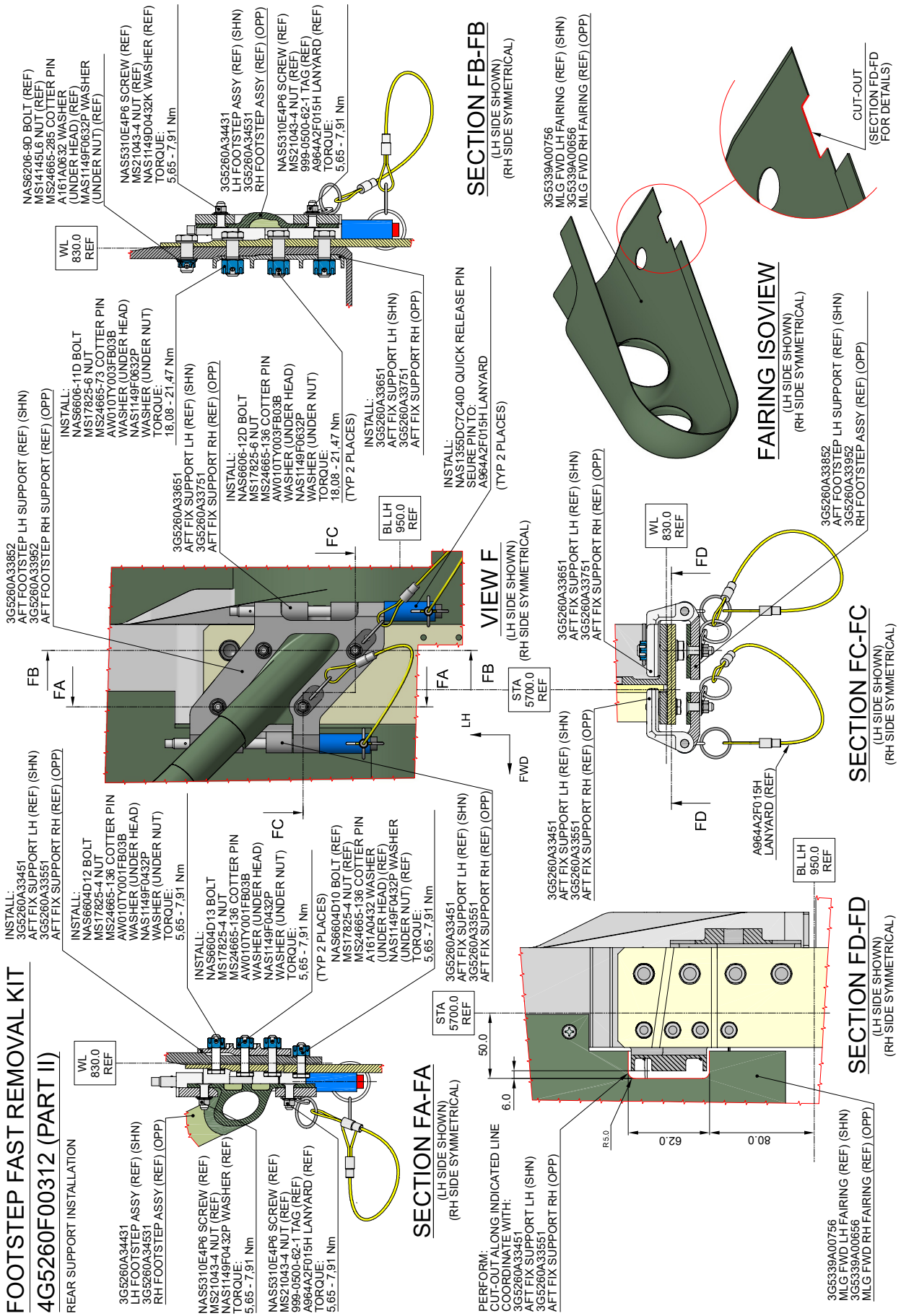


Figure 7

S.B. N°139-398

DATE: December 16, 2015

REVISION: A - March 23, 2022

Please send to the following address: LEONARDO S.p.A. CUSTOMER SUPPORT & SERVICES - ITALY PRODUCT SUPPORT ENGINEERING & LICENSES DEPT. Via Giovanni Agusta, 520 21017 Cascina Costa di Samarate (VA) - ITALY Tel.: +39 0331 225036 Fax: +39 0331 225988		SERVICE BULLETIN COMPLIANCE FORM	Date:	
		Number:		
		Revision:		
Customer Name and Address:		Telephone:		
		Fax:		
		B.T. Compliance Date:		
Helicopter Model	S/N	Total Number	Total Hours	T.S.O.
Remarks:				
Information: We request your cooperation in filling this form, in order to keep out statistical data relevant to aircraft configuration up-to-date. The form should be filled in all its parts and sent to the above address or you can communicate the application also via Technical Bulletin Application Communication Section placed in Leonardo AW Customer Portal - MyCommunications Area. We thank you beforehand for the information given.				