



GALAXY AEROSPACE (M) SDN. BHD

**Suite 11-14, MRO Centre, Malaysian International Aerospace Centre,
Sultan Abdul Aziz Shah Airport,
47200, Subang, Selangor Darul Ehsan, Malaysia
Tel : +603-77347226 Fax : +603-77347526**

WORKSHOP CAPABILITY PROCEDURE

GAM/WCP

ISSUE 1 Amendment 07




**This document must be read in conjunction with GAM Workshop Management Procedure
GAM/WMP latest amendment**

**This document is the property of GALAXY AEROSPACE (M) SDN. BHD. (1040262-D), no part of it shall be reproduced or
transmitted to third parties without the express prior written authorization of GALAXY AEROSPACE (M) SDN. BHD. nor
shall its contents be disclosed**

PART 0.1 Authorisation

The Workshop Capability Procedure; document no. **GAM/WCP ISSUE 1 Amendment 07** is hereby approved by the Engineering Manager and accepted by QAM.

The Engineering Manager is responsible to ensure that the policies, procedures and instruction contained in this manual are adhered to by all persons employed in the Engineering Department in the execution of their duties.

PREPARED BY	APPROVED BY	ACCEPTED BY
 HAMIDAH BINTI HAMA Workshop In-Charge Date: 18 April 2022	 SYAFRUL YAMANI BIN SAFRUDDIN Engineering Manager Date: 18 April 2022	 OMAR BIN AHMAD Quality Assurance Manager Date: 18 April 2022

DOCUMENT REFERENCE:	GAM/WCP	DATE:	18 April 2022
AMENDMENT:	07	PAGE:	Part 0.2 1 of 1

PART 0.2 AMENDMENT RECORD

Each amendment of this document will be accompanied by a letter of transmittal showing the pages to be removed and those to be inserted. All pages will show the date of issue which can be cross checked with the list of effective pages to ensure it's current.

AMEND. DATE	ISSUE NO	AMEND. NO	DETAILS OF AMENDMENT
14 April 2020	1	Initial	Initial issue of GAM Workshop Capability Procedure (WCP)
12 October 2020	1	01	Inclusion of Part 2.1.11 KANNAD ELT Series.
15 January 2021	1	02	Inclusion of SAFT battery part number 2758.
16 February 2021	1	03	Inclusion of AW139 Aerosekur float part number.
1 March 2021	1	04	Inclusion of additional Concorde battery.
15 September 2021	1	05	Changes from DCAM to CAAM and AN29A to CAD 8708
21 October 2021	1	06	WCP 2.1.11 – Kannad ELT Series (Amendment 02).
18 April 2022	1	07	Inclusion of AW139 and AW189 Life Raft.

DOCUMENT REFERENCE:	GAM/WCP	DATE:	18 April 2022
AMENDMENT:	07	PAGE:	Part 0.2 1 of 1

PART 0.3 DISTRIBUTION LIST

Copy Number	Holder	Format
01	Quality Assurance Manager	Hard Copy (Master Copy)
02	Accountable Manager, Engineering Manager and GAM Personnel	Soft Copy (GAMS Portal)
03	Workshop	Hard Copy

DOCUMENT REFERENCE:	GAM/WCP	DATE:	18 April 2022
AMENDMENT:	07	PAGE:	Part 0.3 1 of 1

PART 0.4 TABLE OF CONTENTS

PART 0 PRELIMINARY

- 0.1 Authorisation
- 0.2 Amendment Record
- 0.3 Distribution List
- 0.4 Table of Contents
- 0.5 List of Effective Pages
- 0.6 Administration and Control

PART 1 WORKSHOP CAPABILITY

- 1.1 Workshop Capability List




PART 2 WORKSHOP CAPABILITY PROCEDURE

- 2.1 Workshop Capability Procedure

DOCUMENT REFERENCE:	GAM/WCP	DATE:	14/04/2020
AMENDMENT:	INITIAL	PAGE:	Part 0.4 1 of 1

PART 0.5 LIST OF EFFECTIVE PAGES

PART	PAGE NO	ISSUE NO	AMEND. NO	AMEND. DATE
PART 0				
0.1	1 of 1	1	07	18 April 2022
0.2	1 of 1	1	07	18 April 2022
0.3	1 of 1	1	07	18 April 2022
0.4	1 of 1	1	Initial	14 April 2020
0.5	1 of 1	1	07	18 April 2022
0.6	1 of 1	1	Initial	14 April 2020
PART 1				
1.1	1 of 1	1	Initial	14 April 2020
PART 2				
2.1	1 of 1	1	07	18 April 2022

PREPARED BY	APPROVED BY	ACCEPTED BY
 HAMIDAH BINTI HAMA Workshop In-Charge Date: 18 April 2022	 SYAFRUL YAMANI BIN SAFRUDDIN Engineering Manager Date: 18 April 2022	 OMAR BIN AHMAD Quality Assurance Manager Date: 18 April 2022

DOCUMENT REFERENCE:	GAM/WCP	DATE:	18 April 2021
AMENDMENT:	07	PAGE:	Part 0.5 1 of 1

PART 0.6 ADMINISTRATION AND CONTROL

For means of administration and control of this document, refer WMP Part 0.8.

DOCUMENT REFERENCE:	GAM/WCP	DATE:	14/04/2020
AMENDMENT:	INITIAL	PAGE:	Part 0.6 1 of 1

PART 1.1 WORKSHOP CAPABILITY LIST

Refer to the latest revision of GAM Workshop Capability List (GAM/CAAM/WCL)

DOCUMENT REFERENCE:	GAM/WCP	DATE:	14/04/2020
AMENDMENT:	INITIAL	PAGE:	Part 1.1 1 of 1

PART 2.1 Workshop Capability Procedure

PART	WORKSHOP CAPABILITY PROCEDURE	AMDT. NO.	RESPONSIBLE WORKSHOP
2.1.1	ARTEX Aviation ELT Series	01	AVIONICS
2.1.2	SAFT Aircraft Battery Ni-Cad Series	02	AVIONICS
2.1.3	MarathonNorco Aircraft Battery Ni-Cad Series	01	AVIONICS
2.1.4	Concorde Aircraft Battery Lead-Acid Series	02	AVIONICS
2.1.5	Aerosekur Float Series	01	SAFETY EQUIPMENT
2.1.6	RESERVED		
2.1.7	RESERVED		
2.1.8	RESERVED		
2.1.9	RESERVED		
2.1.10	Gill Aircraft Battery Lead-Acid Series	01	AVIONICS
2.1.11	KANNAD ELT Series	02	AVIONICS
2.1.12	Inflatable Life Raft In-Type F11R & F14R Valise	INITIAL	SAFETY EQUIPMENT

WORKSHOP CAPABILITY PROCEDURE FOR ARTEX AVIATION ELT SERIES

GAM/WCP/PART 2.1.1

AMENDMENT - 01

OWNER:

GALAXY AEROSPACE SDN. BHD

CAAM AMO/2016/02

DOCUMENT REFERENCE:	GAM/WCP/PART 2.1.1	DATE:	16/07/2021
AMENDMENT:	01	PAGE:	Part 1.1 1 of 1

WORKSHOP CAPABILITY PROCEDURE

PART 1.2 AMENDMENT RECORD

Each amendment of this document will be accompanied by a letter of transmittal showing the pages to be removed and those to be inserted. All pages will show the date of issue which can be cross checked with the list of effective pages to ensure it's current.

Date of Amendment	Amdt. No.	Details of Amendment
03/03/2020	Initial	Initial issue of GAM/WCP/PART 2.1.1
16/07/2021	01	Changes from DCAM to CAAM and AN29A to CAD 8708. Part 1.11.4 Scope Group a.II - Category C6 change to W2.

DOCUMENT REFERENCE:	GAM/WCP/PART 2.1.1	DATE:	16/07/2021
AMENDMENT:	01	PAGE:	Part 1.2 1 of 1

WORKSHOP CAPABILITY PROCEDURE

PART 1.4 TABLE OF CONTENT

1.1	Title Page
1.2	Amendment Record
1.3	List of Effective Pages
1.4	Table of Contents
1.5	Introduction
1.6	Register of Issued MOC
1.7	Description, Scope of Capability and
1.8	List of Approved Maintenance Data
1.9	List of Equipment and Tool Requirement
1.10	Approved Facility
1.11	Certifying Personnel
1.12	Training Requirement
1.13	Sample of Workshop Worksheet

DOCUMENT REFERENCE:	GAM/WCP/PART 2.1.1	DATE:	03/03/2020
AMENDMENT:	INITIAL	PAGE:	Part 1.4 1 of 1

WORKSHOP CAPABILITY PROCEDURE

PART 1.5 INTRODUCTION

1.5.1 Introduction

- a. This Workshop Capability Procedure is to address how GAM manages its' ARTEX Emergency Locator Transmitter (ELT) servicing workshop capabilities and activities and supporting MOE 2.9 Repair Procedure and Workshop Procedures Manual.
- b. GAM can now offer its expertise and MRO services to all carriers operating with ARTEX Emergency Locator Transmitter (ELT). The offer includes battery replacement and re-programming.
- c. This Workshop Capability Procedure covers GAM Capability, processes and certification within GAM Workshop Approval/System.

1.5.2 Reference

- a. MCAR 2016.
- b. CAAM [Civil Aviation Directives CAD 8708](#).
- c. GAM Maintenance Organisation Exposition GAM/MOE.
- d. GAM Workshop Procedure Manual GAM/WMP.
- e. ARTEX Emergency Locator Transmitter Description, Operation, Installation and Maintenance Manual 25-62-03.
- f. ARTEX Emergency Locator Transmitter Description, Operation, Installation and Maintenance Manual 25-62-10.
- g. ARTEX Emergency Locator Transmitter Description, Operation, Installation and Maintenance Manual 25-62-11.
- h. ARTEX Emergency Locator Transmitter Description, Operation, Installation and Maintenance Manual 25-62-1.
- i. ARTEX Emergency Locator Transmitter Description, Operation, Installation and Maintenance Manual 25-62-21.
- j. ARTEX Emergency Locator Transmitter Description, Operation, Installation and Maintenance Manual 25-62-30.
- k. ARTEX Emergency Locator Transmitter Description, Operation, Installation and Maintenance Manual 25-62-31.
- l. ARTEX Emergency Locator Transmitter Description, Operation, Installation and Maintenance Manual 25-62-33.
- m. ARTEX Emergency Locator Transmitter Description, Operation, Installation and Maintenance Manual 25-62-36.
- n. ARTEX A3-06-2824 Handheld Programmer Operations Manual Y1-03-0272.

DOCUMENT REFERENCE:	GAM/WCP/PART 2.1.1	DATE:	16/07/2021
AMENDMENT:	01	PAGE:	Part 1.5 1 of 1

WORKSHOP CAPABILITY PROCEDURE

PART 1.6 REGISTER OF ISSUED MOC

Item	MOC Number	Significant Y/N	Rev. no.	Dated
01	GAM/MOC/19/0018	Y	Initial	20/03/2019
02	GAM/MOC/21/0027	Y	01	16/07/2021

DOCUMENT REFERENCE:	GAM/WCP/PART 2.1.1	DATE:	16/07/2021
AMENDMENT:	01	PAGE:	Part 1.6 1 of 1

WORKSHOP CAPABILITY PROCEDURE

PART 1.7 DESCRIPTION, SCOPE AND MODEL OF COMPONENT UNDER WORKSHOP CAPABILITY

1.7.1 Description

- a. This section details the GAM capability to perform servicing to the ARTEX Emergency Locator Transmitter (ELT)

1.7.2 Scope of Capability

- a. Service for workshop capability to be carried out by GAM for ARTEX Emergency Locator Transmitter (ELT) are as per follows:
- i. Battery Replacement
 - ii. Re-programming ELT
 - iii. Re-programming Programming Adapter (PA)
- b. Repair for failures found during self-test, programming or battery replacement, the ELT must be repaired by the manufacturer or by an approved repair centre (list on ARTEX Emergency Locator Transmitter website).

1.7.3 Model of Component under Workshop Capability

Components	Model/ Series	Part Number
Emergency Locator Transmitter (ELT) (Battery Replacement)	B406-4	453-5004
	C406 Series	453-5000, 453-5001, 453-5002, 453-5003, 453-5060, 453-5061
	G406-4	453-5012
	ME406 Series	453-6603, 453-6604, 453-6611
	ELT1000	A3-06-2749-1
	ELT 3000 Series	A3-06-2796-8, A3-06-2796-9
Emergency Locator Transmitter (ELT)* (Programming)	B406 Series	453-0003, 453-0004, 453-0005, 453-5004
	C406 Series	453-5000, 453-5001, 453-5002, 453-5003, 453-5006, 453-5056, 453-5060, 453-5061
	G406 Series	453-5100, 453-5102
	110-406 Series	453-0006, 453-0406, 453-0407, 453-0421, 453-0423, 453-0424
	ME406 Series	453-6603, 453-6604, 453-6611, 453-6650
	ELT1000	A3-06-2749-1

DOCUMENT REFERENCE:	GAM/WCP/PART 2.1.1	DATE:	03/03/2020
AMENDMENT:	INITIAL	PAGE:	Part 1.7 1 of 3

WORKSHOP CAPABILITY PROCEDURE

Components	Model/ Series	Part Number
	ELT 345	A3-06-2880
	ELT 3000 Series	A3-06-2796-8, A3-06-2796-9
Programming Adaptor (PA) (Programming)	C406-N Programming Adaptor	453-5068 (Blank), 453-5078 (Pre- Programmed)
	ELT 3000 Programming Adaptor	A3-06-2868 (Pre- Programmed), A3-06-2869 (Blank)

*All ELT's stated is listed under document number Y1-03-0272, "A3-06-2824 Handheld Programmer Operations Manual" latest revision; Table 1: ELT Data.

DOCUMENT REFERENCE:	GAM/WCP/PART 2.1.1	DATE:	03/03/2020
AMENDMENT:	INITIAL	PAGE:	Part 1.7 2 of 2

WORKSHOP CAPABILITY PROCEDURE

PART 1.8 LIST OF APPROVED MAINTENANCE DATA

1.8.1 Minimum Requirement of Approved Manuals

Model/Series	Manuals
B406-4	ARTEX Emergency Locator Transmitter Description, Operation, Installation and Maintenance Manual 25-62-03 of the latest revision.
C406 Series	1. P/N: 453-5002, 453-5003 ARTEX Emergency Locator Transmitter Description, Operation, Installation and Maintenance Manual 25-62-10 of the latest revision 2. P/N: 453-5000, 453-5001 ARTEX Emergency Locator Transmitter Description, Operation, Installation and Maintenance Manual 25-62-11 of the latest revision 3. P/N: 453-5060, 453-5061 ARTEX Emergency Locator Transmitter Description, Operation, Installation and Maintenance Manual 25-62-13 of the latest revision
G406-4	ARTEX Emergency Locator Transmitter Description, Operation, Installation and Maintenance Manual 25-62-21 of the latest revision
ME406 Series	1. P/N: 453-6603, 453-6604 ARTEX Emergency Locator Transmitter Description, Operation, Installation and Maintenance Manual 25-62-30 of the latest revision 2. P/N: 453-6611 ARTEX Emergency Locator Transmitter Description, Operation, Installation and Maintenance Manual 25-62-31 of the latest revision
ELT1000	ARTEX Emergency Locator Transmitter Description, Operation, Installation and Maintenance Manual 25-62-33 of the latest revision.
ELT 3000 Series	ARTEX Emergency Locator Transmitter Description, Operation, Installation and Maintenance Manual 25-62-36 of the latest revision.
Programming ELT's listed under A3-06-2824 (TPS 8700) Handheld Programmer Operations Manual; Table 1: ELT Data.	ARTEX A3-06-2824 Handheld Programmer Operations Manual Y1-03-0272 of the latest revision.

DOCUMENT REFERENCE:	GAM/WCP/PART 2.1.1	DATE:	03/03/2020
AMENDMENT:	INITIAL	PAGE:	Part 1.8 1 of 2

WORKSHOP CAPABILITY PROCEDURE

C406-N Programming Adaptor	ARTEX Emergency Locator Transmitter Description, Operation, Installation and Maintenance Manual 25-62-13 of the latest revision
ELT 3000 Programming Adaptor	Description, Operation, Installation and Maintenance Manual Y1-03-0269 of the latest revision

Note: These documents are available for download on the ARTEX ELT website.

DOCUMENT REFERENCE:	GAM/WCP/PART 2.1.1	DATE:	03/03/2020
AMENDMENT:	INITIAL	PAGE:	Part 1.8 2 of 2

WORKSHOP CAPABILITY PROCEDURE

PART 1.9 EQUIPMENT AND TOOL REQUIREMENT

1.9.1 List of Equipment and Tool Requirement

DESIGNATION	CHARACTERISTIC	USAGE	
		PROGRAMMING	BATTERY REPLACEMENT
Programming Equipment	ARTEX 8700 Handheld Programmer with Programming kits supplied by ARTEX to Authorised Programmer	X	
Laptop OR PC with minimum of Windows XP minimum and Internet connection.	Commercially available	X	X
Corpas-Sarsat 121.5Mhz and 406Mhz Decoder	ARTEX 8700 Handheld programmer with Sarcalc Tester program OR equivalent.	X	X
Standard Mechanic's Tools	Commercially available		X
Torque Screwdriver	Commercially available		X
Label Maker	Commercially available	X	
Digital Multimeter (Capable to measure Voltage and Current)	Commercially available		X

DOCUMENT REFERENCE:	GAM/WCP/PART 2.1.1	DATE:	03/03/2020
AMENDMENT:	INITIAL	PAGE:	Part 1.9 1 of 1

WORKSHOP CAPABILITY PROCEDURE

PART 1.10 APPROVED FACILITY

1.10.1 Minimum Requirement of Facility

1.10.1.1 ARTEX ELT

ARTEX ELT	
Type of Maintenance	Requirements
Battery Replacement and Programming	No special requirements except for the environment should be at the temperature of between 15°C and 35°C.

1.10.2 Approved Facility for the Maintenance

- a. Avionics Workshop consists of Avionics Room, Lead Acid Battery Room and Ni-Cad Battery Room. GAM has identified Avionics Room under Avionics Workshop at the Galaxy Aerospace (M) Sdn Bhd headquarters (GAM HQ) as the Specific Approved Facility for all maintenance activities of ARTEX Emergency Locator Transmitter (ELT).
- b. Avionics Room is equipped with sufficient lighting, air conditioned, workbench, workstation and a laptop computer, internet connection, fire extinguisher, fire escape plan, ESDS workstation, INCOMING, HOLDING, OUTGOING and QUARANTINE area, equipment storage cabinet and racks for manuals.
- c. As there are no special requirements called for by the OEM except for minor requirements on testing and assembly types of maintenance, it has been decided that any maintenance facility that can meet with the requirements are considered suitable for carrying out the maintenance work on the ELTs.
- d. List of approved maintenance facilities for the purpose of this capability are tabled below:

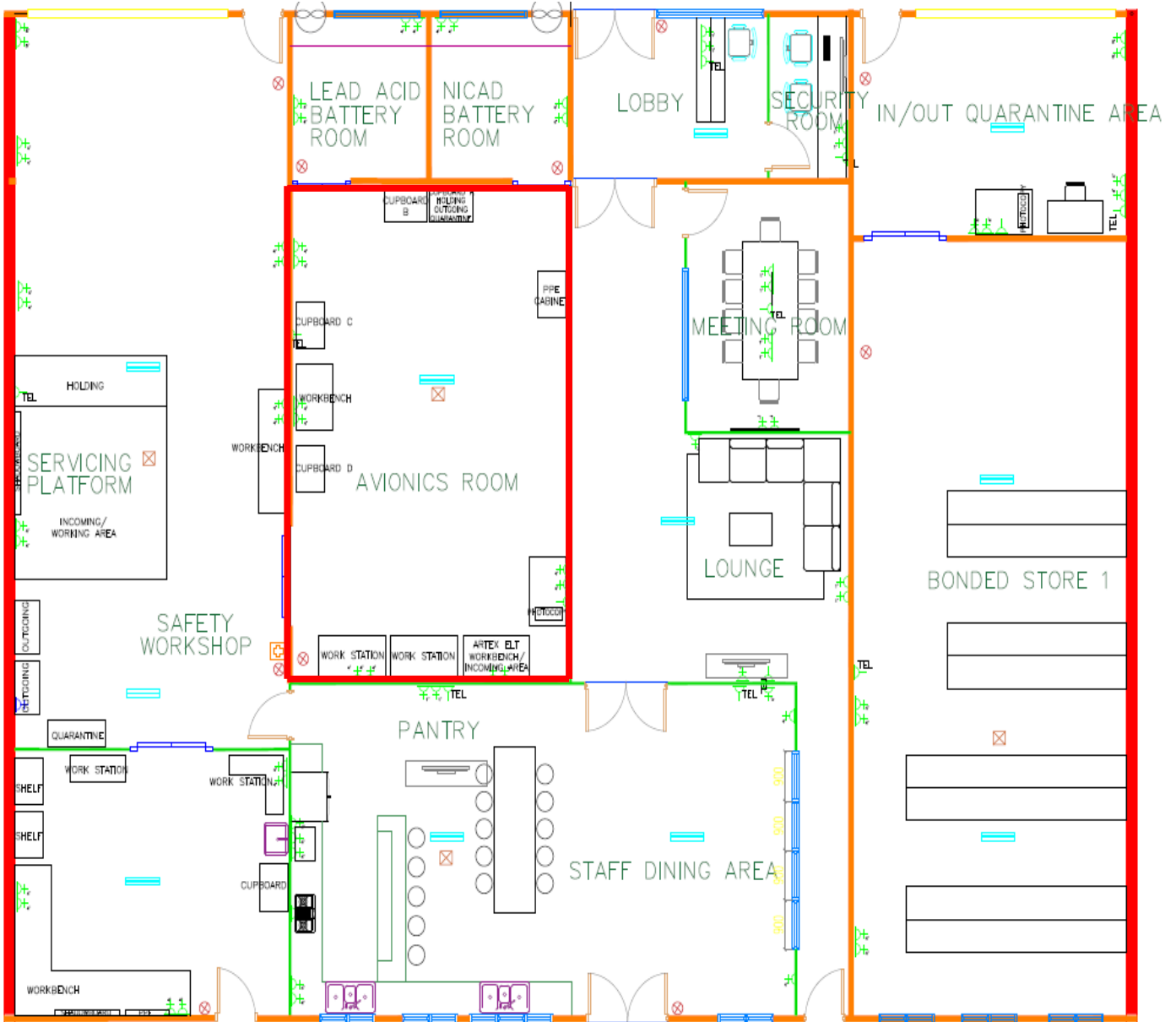
1.10.2.1 ARTEX ELT All Series and Programming Adapter

Type of Maintenance	Requirements
Battery Replacement and Programming	<ol style="list-style-type: none"> a. Specific Approved Facility at GAM HQ. Avionics Room Galaxy Aerospace (M) Sdn Bhd. Suite 11-14, Helicopter Centre, Malaysia International Aerospace Centre, Sultan Abdul Aziz Shah Airport, 47200 Subang, Selangor, Malaysia. b. Any CAAM AMO maintenance facility that can comply to the minimum facility requirement in para. 1.10.1.1, 1.10.2 (c) and approved by CAAM

DOCUMENT REFERENCE:	GAM/WCP/PART 2.1.1	DATE:	03/03/2020
AMENDMENT:	INITIAL	PAGE:	Part 1.10 1 of 3

WORKSHOP CAPABILITY PROCEDURE

1.10.3 Approved Facility – ARTEX ELT Workshop (Avionics Room), GAM HQ



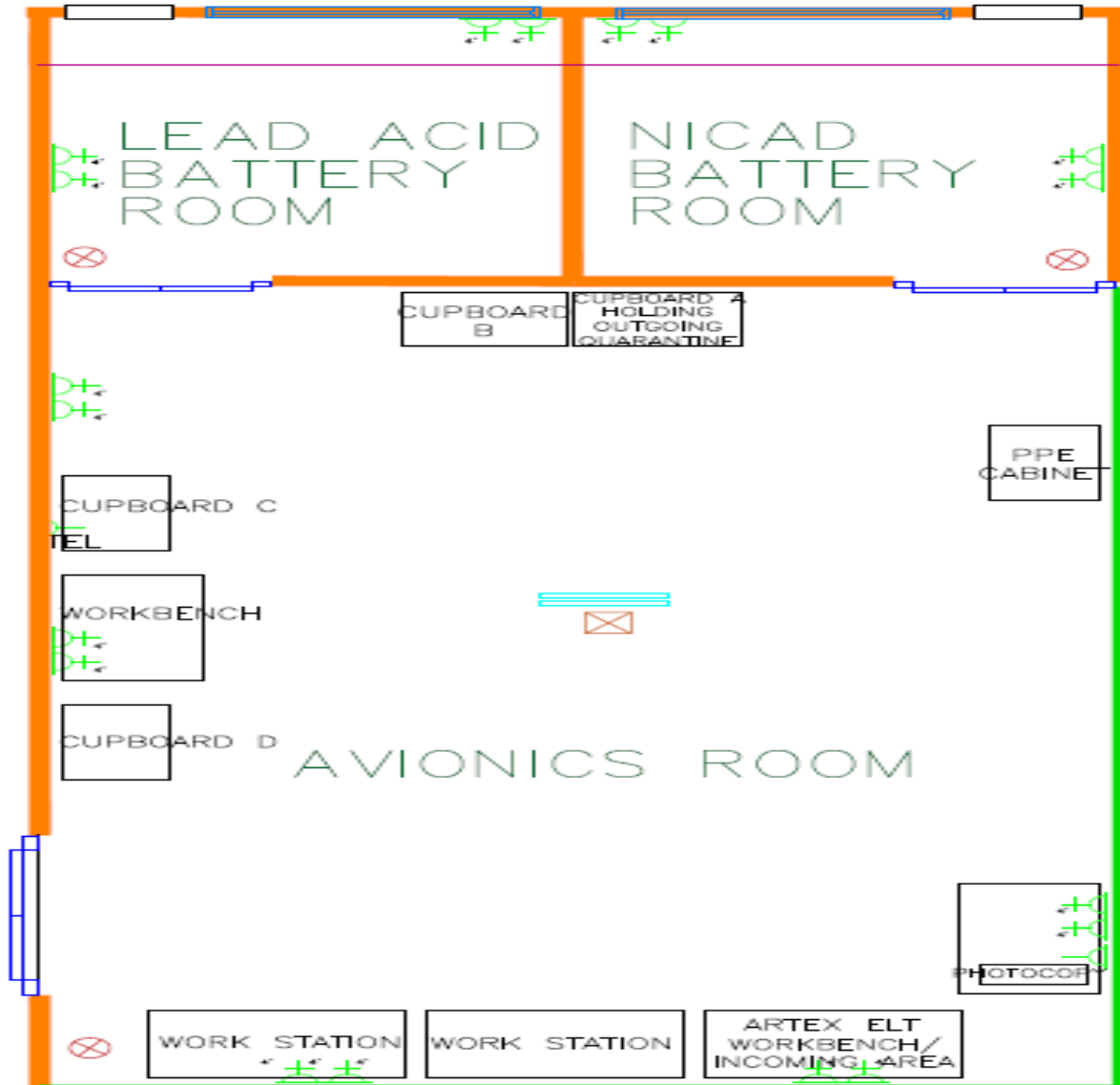
REFERENCE

-  Fire Extinguisher
-  Emergency Light
-  Smoke Detector
-  Shutter
-  Sliding door
-  Window
-  First Aid Kit
-  Sink
-  Ventilation Fan

DOCUMENT REFERENCE:	GAM/WCP/PART 2.1.1	DATE:	03/03/2020
AMENDMENT:	INITIAL	PAGE:	Part 1.10 2 of 3

WORKSHOP CAPABILITY PROCEDURE

1.10.3.1 Approved Facility – ARTEX ELT Workshop (Avionics Room), GAM HQ



REFERENCE

-  Fire Extinguisher
-  Emergency Light
-  Smoke Detector
-  Shutter
-  Sliding door
-  Window
-  First Aid Kit
-  Sink
-  Ventilation Fan

DOCUMENT REFERENCE:	GAM/WCP/PART 2.1.1	DATE:	03/03/2020
AMENDMENT:	INITIAL	PAGE:	Part 1.10 3 of 3

WORKSHOP CAPABILITY PROCEDURE

PART 1.11 CERTIFYING PERSONNEL

1.11.1 Requirement for Certifying Personnel (WMP Part 1.7.5)

- a. For aircraft requirement is a B2 Company Approval Holder on type.
- b. For a Company Approval Holder on Category C; Component C6 on ARTEX ELTs and ARTEX Programming Adapter.

1.11.2 Minimum Qualification for Company Approval

- a. As laid down in MOE Part 3.4.

1.11.3 Assessment on Certifying Personnel

- a. Certifying Personnel are subjected to Technical Competency Assessment i.a.w MOE Part 3.4.

1.11.4 List of Company Approval Holders

- a. List of Current Approval Holders of Component C6 on ARTEX ELTs and ARTEX Programming Adapter are listed in as per table below.

Scope Group	Approval Holders
a.I	B2 Category Approval Holder on type Approval Holder as listed in GAM/Q-001 (List of Approval Holder) of the latest revision.
a.II	B2 and W2 Category Approval Holder as listed in GAM/Q-001 (List of Approval Holder) of the latest revision.

DOCUMENT REFERENCE:	GAM/WCP/PART 2.1.1	DATE:	16/07/2021
AMENDMENT:	01	PAGE:	Part 1.11 1 of 1

WORKSHOP CAPABILITY PROCEDURE

PART 1.12 TRAINING REQUIREMENT

1.12.1 Requirement of Training for Certifying Personnel

- a. Specific training is required by ARTEX for Certifying Personnel to perform the maintenance.
- b. Certifying Personnel shall need to comply with the minimum training requirement as required by MOE Part 3.4.

DOCUMENT REFERENCE:	GAM/WCP/PART 2.1.1	DATE:	03/03/2020
AMENDMENT:	INITIAL	PAGE:	Part 1.12 1 of 1

WORKSHOP CAPABILITY PROCEDURE

PART 1.13 SAMPLE WORKSHEET

1. **ARTEX ELT B/C/G 406 Series Battery Pack Replacement**
Refer attachment I

2. **ARTEX ELT 1000 Battery Pack Replacement**
Refer attachment II

3. **ARTEX ELT 3000 Battery Pack Replacement**
Refer attachment III

4. **ARTEX ELT ME406 Series Battery Pack Replacement**
Refer attachment IV

5. **ARTEX ELT & PA Programming**
Refer attachment V

DOCUMENT REFERENCE:	GAM/WCP/PART 2.1.1	DATE:	03/03/2020
AMENDMENT:	INITIAL	PAGE:	Part 1.13 1 of 6

WORKSHOP CAPABILITY PROCEDURE

ATTACHMENT I

DOCUMENT REFERENCE:	GAM/WCP/PART 2.1.1	DATE:	03/03/2020
AMENDMENT:	INITIAL	PAGE:	Part 1.13 2 of 6

WORKSHOP CAPABILITY PROCEDURE

ATTACHMENT II

DOCUMENT REFERENCE:	GAM/WCP/PART 2.1.1	DATE:	03/03/2020
AMENDMENT:	INITIAL	PAGE:	Part 1.13 3 of 6

WORKSHOP CAPABILITY PROCEDURE

ATTACHMENT III

DOCUMENT REFERENCE:	GAM/WCP/PART 2.1.1	DATE:	03/03/2020
AMENDMENT:	INITIAL	PAGE:	Part 1.13 4 of 6

WORKSHOP CAPABILITY PROCEDURE

ATTACHMENT IV

DOCUMENT REFERENCE:	GAM/WCP/PART 2.1.1	DATE:	03/03/2020
AMENDMENT:	INITIAL	PAGE:	Part 1.13 5 of 6

WORKSHOP CAPABILITY PROCEDURE

ATTACHMENT V

DOCUMENT REFERENCE:	GAM/WCP/PART 2.1.1	DATE:	03/03/2020
AMENDMENT:	INITIAL	PAGE:	Part 1.13 6 of 6

**WORKSHOP CAPABILITY PROCEDURE
FOR
SAFT AIRCRAFT BATTERY NI-CAD
SERIES**

GAM/WCP/PART 2.1.2

AMENDMENT - 02

OWNER:

GALAXY AEROSPACE SDN. BHD

CAAM AMO/2016/02

DOCUMENT REFERENCE:	GAM/WCP/PART 2.1.2	DATE:	19/07/2021
AMENDMENT:	02	PAGE:	Part 1.1 1 of 1

WORKSHOP CAPABILITY PROCEDURE

PART 1.2 AMENDMENT RECORD

Each amendment of this document will be accompanied by a letter of transmittal showing the pages to be removed and those to be inserted. All pages will show the date of issue which can be cross checked with the list of effective pages to ensure it's current.

Date of Amendment	Amdt. No.	Details of Amendment
03/03/2020	Initial	Initial issue of GAM/WCP/PART 2.1.2
15/01/2021	01	Corrections/Changes on Part 1.5.2 Reference - CMM 24-38-51 for new SAFT battery Part Number – 2758 added, Part 1.11.4 Scope Group a.II - Category C5 change to W1, and Part 1.7.3 Model of Component under Workshop Capability - Inclusion of new SAFT battery Part Number – 2758.
19/07/2021	02	Changes from DCAM to CAAM and AN29A to CAD 8708.

DOCUMENT REFERENCE:	GAM/WCP/PART 2.1.2	DATE:	19/07/2021
AMENDMENT:	02	PAGE:	Part 1.2 1 of 1

WORKSHOP CAPABILITY PROCEDURE

PART 1.4 TABLE OF CONTENT

1.1	Title Page
1.2	Amendment Record
1.3	List of Effective Pages
1.4	Table of Contents
1.5	Introduction
1.6	Register of Issued MOC
1.7	Description, Scope of Capability and
1.8	List of Approved Maintenance Data
1.9	List of Equipment and Tool Requirement
1.10	Approved Facility
1.11	Certifying Personnel
1.12	Training Requirement
1.13	Sample of Workshop Worksheet

DOCUMENT REFERENCE:	GAM/WCP/PART 2.1.2	DATE:	03/03/2020
AMENDMENT:	INITIAL	PAGE:	Part 1.4 1 of 1

WORKSHOP CAPABILITY PROCEDURE

PART 1.5 INTRODUCTION

1.5.1 Introduction

- a. This Workshop Capability Procedure is to address how GAM manages its SAFT Ni-Cad Aircraft Battery workshop capabilities and activities and supporting MOE 2.9 Repair Procedure and Workshop Procedures Manual.
- b. GAM can now offer its expertise and MRO services to all carriers operating with SAFT Aircraft Battery Ni-Cad. The offer includes the maintenance of battery for periodical checks, regular checks, general overhaul, disassembly and reassembly, cleaning and testing and repair and replacement.
- c. This Workshop Capability Procedure covers GAM Capability, processes and certification within GAM Workshop Approval/System.

1.5.2 Reference

- a. MCAR 2016.
- b. CAAM [Civil Aviation Directives CAD 8708](#).
- c. GAM Maintenance Organization Exposition GAM/MOE.
- d. GAM Workshop Procedure Manual GAM/WMP.
- e. SAFT Component Maintenance Manual with Illustrated Parts List CMM 24-33-96.
- f. SAFT Component Maintenance Manual with Illustrated Parts List CMM 24-39-06.
- g. SAFT Component Maintenance Manual with Illustrated Parts List CMM 24-30-00.
- h. SAFT Operating and Maintenance Manual for Ni-Cd Aircraft Batteries OMM 24-30-99.
- i. SAFT Component Maintenance Manual with Illustrated Parts List CMM 24-38-51.

DOCUMENT REFERENCE:	GAM/WCP/PART 2.1.2	DATE:	19/07/2021
AMENDMENT:	02	PAGE:	Part 1.5 1 of 1

WORKSHOP CAPABILITY PROCEDURE

PART 1.6 REGISTER OF ISSUED MOC

Item	MOC Number	Significant Y/N	Rev. no.	Dated
01	GAM/MOC/19/0020	Y	Initial	20/03/2019
02	GAM/MOC/21/0004	Y	01	15/01/2021
03	GAM/MOC/21/0028	Y	02	19/07/2021

DOCUMENT REFERENCE:	GAM/WCP/PART 2.1.2	DATE:	19/07/2021
AMENDMENT:	02	PAGE:	Part 1.6 1 of 1

WORKSHOP CAPABILITY PROCEDURE

PART 1.7 DESCRIPTION, SCOPE AND MODEL OF COMPONENT UNDER WORKSHOP CAPABILITY

1.7.1 Description

- a. This section details the GAM capability to perform maintenance checks and service to the specified SAFT Aircraft Battery Ni-Cad Series

1.7.2 Scope of Capability

- a. Maintenance for workshop capability to be carried out by GAM for SAFT Aircraft Battery Ni-Cad Series are as per follows:
 - i. Periodical Check
 - ii. Regular Check
 - iii. General Overhaul
 - iv. Cleaning and Testing
 - v. Disassembly and Reassembly
 - vi. Repair & Replacement

1.7.3 Model of Component under Workshop Capability

Components	Model/ Series	Part Number
Nickel-Cadmium Aircraft Battery	SAFT Ni-Cad Battery	151CH1
		151CH2
		1606-1
		1656-1
		1756
		2758
		2778-1
		4071-1
		4071-2
		40208-2

DOCUMENT REFERENCE:	GAM/WCP/PART 2.1.2	DATE:	15/01/2021
AMENDMENT:	01	PAGE:	Part 1.7 1 of 1

WORKSHOP CAPABILITY PROCEDURE

PART 1.8 LIST OF APPROVED MAINTENANCE DATA

1.8.1 Minimum Requirement of Approved Manuals

Part Number	Manuals
151CH1	SAFT Component Maintenance Manual with Illustrated Parts List CMM 24-33-96 Latest Revision.
1606-1	SAFT Component Maintenance Manual with Illustrated Parts List CMM 24-39-06 Latest Revision.
2758	SAFT Component Maintenance Manual with Illustrated Parts List CMM 24-38-51 Latest Revision.
2778-1	SAFT Component Maintenance Manual with Illustrated Parts List CMM 24-30-00 Latest Revision.
151CH2, 1656-1, 1756, 4071-1, 4071-2 and 40208-2	SAFT Operating and Maintenance Manual for Ni-Cd Aircraft Batteries OMM 24-30-99 Latest Revision.

Note: Login to <https://mysaft.saftbatteries.com/> for the latest revision of SAFT Aircraft Battery CMM, IPL and Service Bulletins / Letters.

DOCUMENT REFERENCE:	GAM/WCP/PART 2.1.2	DATE:	15/01/2021
AMENDMENT:	01	PAGE:	Part 1.8 1 of 1

WORKSHOP CAPABILITY PROCEDURE

PART 1.9 EQUIPMENT AND TOOL REQUIREMENT

1.9.1 List of Equipment and Tool Requirement

DESIGNATION	CHARACTERISTIC	USAGE		
		PERIODICAL CHECK	REGULAR CHECK	GENERAL OVERHAUL
Battery Charger and Discharger	Constant Current Charging Range 0 – 25 ADC Constant Current Load Bank Range 0 – 50 ADC	X	X	X
Servicing Kits	SAFT Battery Tool Kit P/N: 416161 and 416160	X	X	X
Digital Insulation Multimeter (Capable to measure Voltage and Current)	Commercially available	X	X	X
Standard Mechanic's Tools	Commercially available	X	X	X
Infrared Thermometer	Commercially available	X	X	X
Torque Wrench	Commercially available	X	X	X
Stiff Bristle Brush (non-metallic)	Commercially available	X	X	X
Heat Gun	Commercially available			X

DOCUMENT REFERENCE:	GAM/WCP/PART 2.1.2	DATE:	03/03/2020
AMENDMENT:	INITIAL	PAGE:	Part 1.9 1 of 1

WORKSHOP CAPABILITY PROCEDURE

PART 1.10 APPROVED FACILITY

1.10.1 Minimum Requirement of Facility

1.10.1.1 Ni-Cad Battery Workshop

Battery	
Type of Maintenance	Requirements
Charging and Discharge Testing	No special requirements except for the environment should be well-ventilated at the temperature of between +15°C and +30°C and relative humidity < 85%
Disassembly and Reassembly	No special requirements except for the area should be clean and free from dust.

1.10.2 Approved Facility for the Maintenance

- a. Avionics Workshop consists of Avionics Room, Lead Acid Battery Room and Ni-Cad Battery Room. GAM has identified Ni-Cad Battery Room under Avionics Workshop at the Galaxy Aerospace (M) Sdn Bhd headquarters (GAM HQ) as the Specific Approved Facility for all maintenance activities of SAFT Aircraft Battery Ni-Cad Series
- b. Ni-Cad Battery Room is equipped with sufficient lighting, air conditioned, wall mounted ventilation fan, workbench, workstation and a laptop computer, internet connection, fire extinguisher, fire escape plan, INCOMING, HOLDING, OUTGOING and QUARANTINE area.
- c. As there are no special requirements called for by the OEM except for minor requirements on charging and discharge testing and assembly types of maintenance, it has been decided that any maintenance facility that can meet with the two requirements are considered suitable for carrying out the maintenance work on the battery.
- d. List of approved maintenance facilities for the purpose of this capability are tabled below:

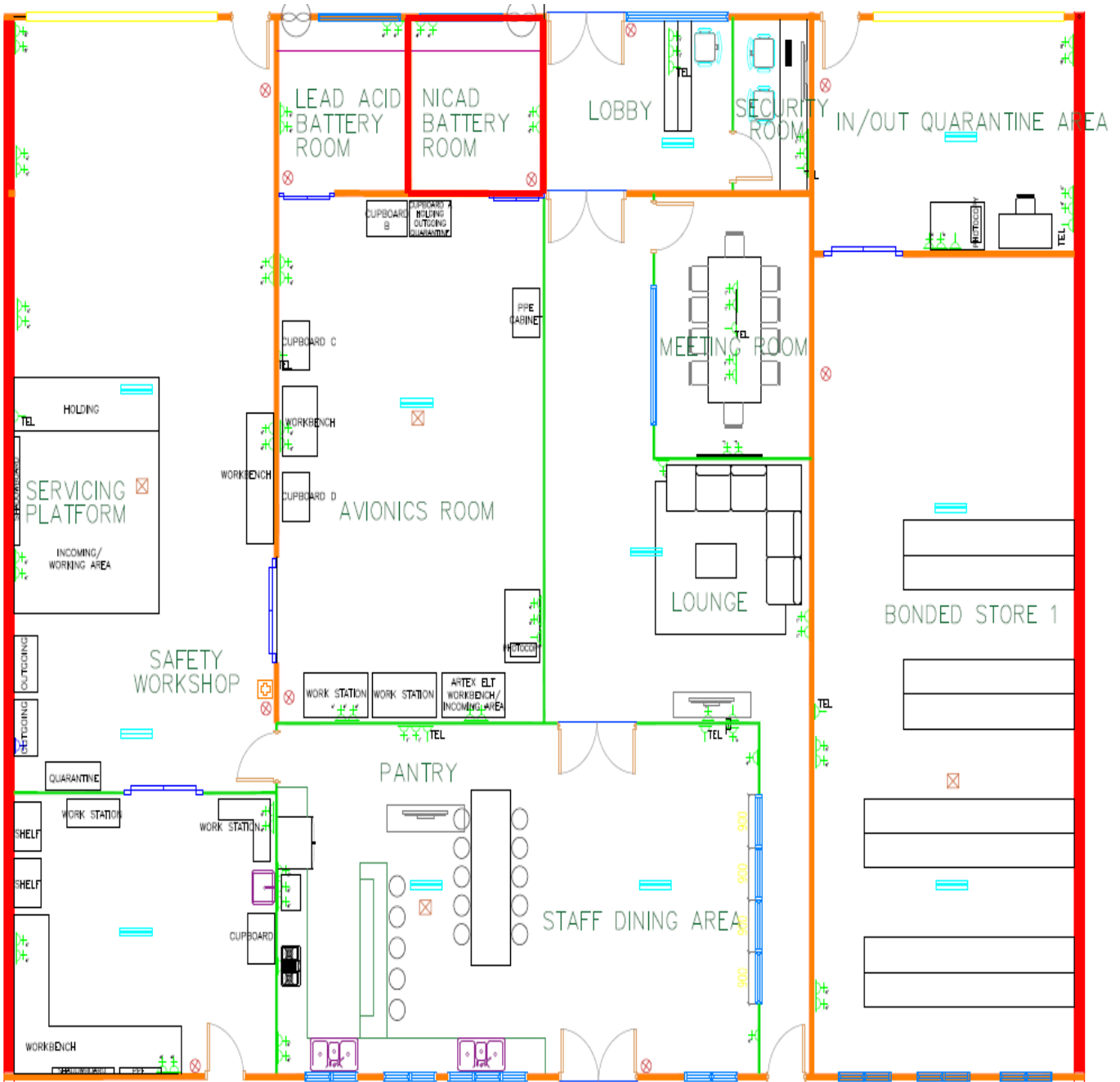
1.10.2.1 SAFT Aircraft Battery Ni-Cad Series

Type of Maintenance	Requirements
Periodical Check, Regular Check, General Overhaul, Cleaning and Testing, Disassembly and Reassembly, Repair and Replacement	<ol style="list-style-type: none"> a. Specific Approved Facility at GAM HQ. Ni-Cad Battery Room Galaxy Aerospace (M) Sdn Bhd. Suite 11-14, Helicopter Centre, Malaysia International Aerospace Centre, Sultan Abdul Aziz Shah Airport, 47200 Subang, Selangor, Malaysia. b. Any CAAM AMO maintenance facility that can comply to the minimum facility requirement in para. 1.10.1.1, 1.10.2 (c) and approved by CAAM

DOCUMENT REFERENCE:	GAM/WCP/PART 2.1.2	DATE:	03/03/2020
AMENDMENT:	INITIAL	PAGE:	Part 1.10 1 of 3

WORKSHOP CAPABILITY PROCEDURE

1.10.3 Approved Facility – Ni-Cad Battery Room, GAM HQ



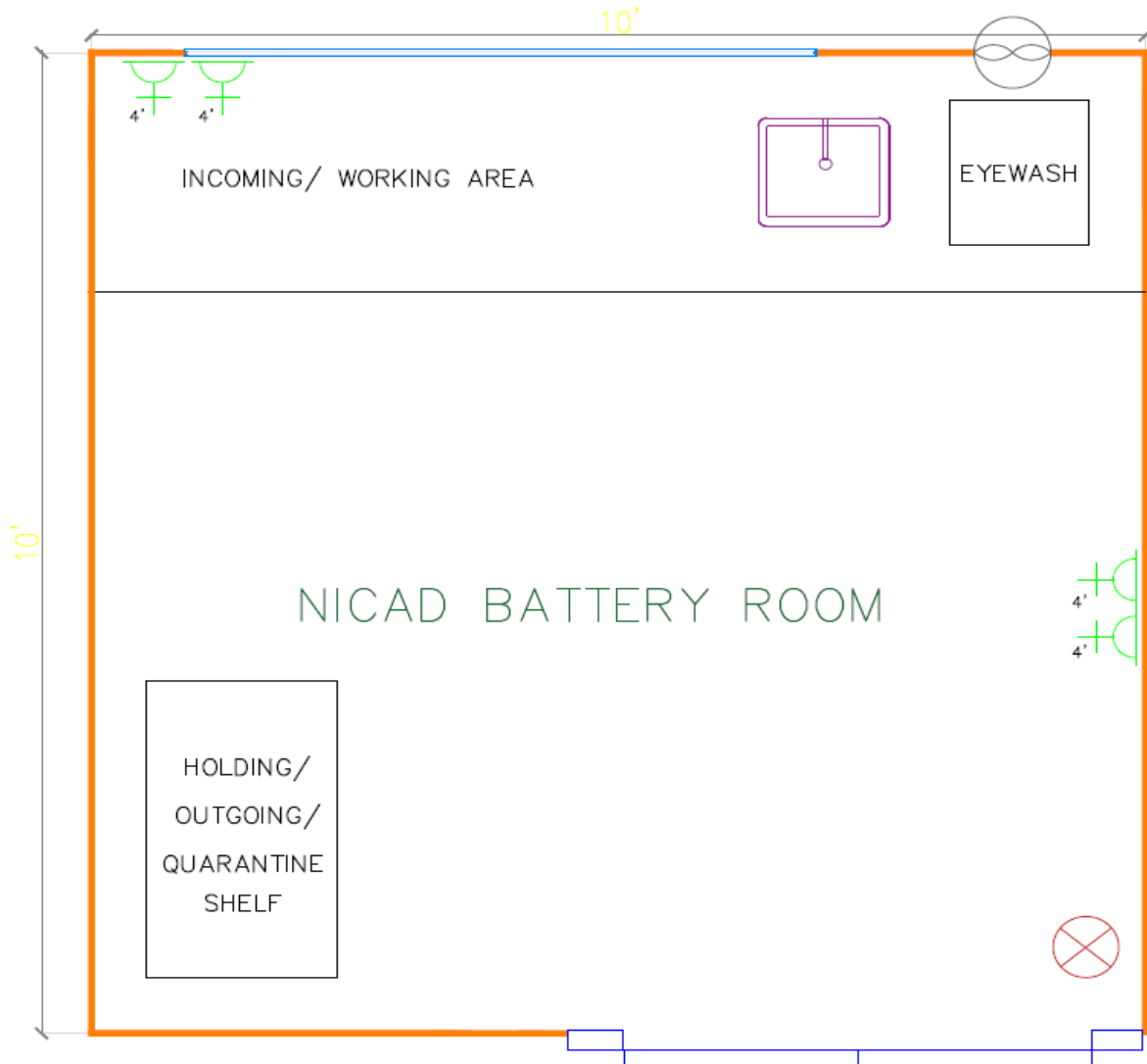
REFERENCE

-  Fire Extinguisher
-  Emergency Light
-  Smoke Detector
-  Shutter
-  Sliding door
-  Window
-  First Aid Kit
-  Sink
-  Ventilation Fan

DOCUMENT REFERENCE:	GAM/WCP/PART 2.1.2	DATE:	03/03/2020
AMENDMENT:	INITIAL	PAGE:	Part 1.10 2 of 3

WORKSHOP CAPABILITY PROCEDURE

1.10.3.1 Approved Facility – Ni-Cad Battery Room, GAM HQ



REFERENCE

- Fire Extinguisher
- Emergency Light
- Smoke Detector
- Shutter
- Sliding door
- Window
- First Aid Kit
- Sink
- Ventilation Fan

DOCUMENT REFERENCE:	GAM/WCP/PART 2.1.2	DATE:	03/03/2020
AMENDMENT:	INITIAL	PAGE:	Part 1.10 3 of 3

WORKSHOP CAPABILITY PROCEDURE

PART 1.11 CERTIFYING PERSONNEL

1.11.1 Requirement for Certifying Personnel (WMP Part 1.7.5)

- a. For aircraft requirement is a B2 Company Approval Holder on type.
- b. For a Company Approval Holder on Category C5; Component C5 on SAFT Aircraft Battery Ni-Cad Series

1.11.2 Minimum Qualification for Company Approval

- a. As laid down in MOE Part 3.4.

1.11.3 Assessment on Certifying Personnel

- a. Certifying Personnel are subjected to Technical Competency Assessment i.a.w MOE Part 3.4.

1.11.4 List of Company Approval Holders

- a. List of Current Approval Holders of Component C5 on SAFT Aircraft Battery Ni-Cad Series are listed in are table as below.

Scope Group	Approval Holders
a.I	B2 Category Approval Holder on type Approval Holder as listed in GAM/Q-001 (List of Approval Holder) of the latest revision.
a.II	B2 and W1 Category Approval Holder as listed in GAM/Q-001 (List of Approval Holder) of the latest revision.

DOCUMENT REFERENCE:	GAM/WCP/PART 2.1.2	DATE:	15/01/2021
AMENDMENT:	01	PAGE:	Part 1.11 1 of 1

WORKSHOP CAPABILITY PROCEDURE

PART 1.12 TRAINING REQUIREMENT

1.12.1 Requirement of Training for Certifying Personnel

- a. No specific training is required by SAFT for Certifying Personnel to perform the maintenance.
- b. Certifying Personnel shall need to comply with the minimum training requirement as required by MOE Part 3.4.

DOCUMENT REFERENCE:	GAM/WCP/PART 2.1.2	DATE:	03/03/2020
AMENDMENT:	INITIAL	PAGE:	Part 1.12 1 of 1

WORKSHOP CAPABILITY PROCEDURE

PART 1.13 SAMPLE WORKSHEET

1. SAFT Battery Workshop Worksheet

Refer attachment I

DOCUMENT REFERENCE:	GAM/WCP/PART 2.1.2	DATE:	03/03/2020
AMENDMENT:	INITIAL	PAGE:	Part 1.13 1 of 2

WORKSHOP CAPABILITY PROCEDURE

ATTACHMENT I

DOCUMENT REFERENCE:	GAM/WCP/PART 2.1.2	DATE:	03/03/2020
AMENDMENT:	INITIAL	PAGE:	Part 1.13 2 of 2

**WORKSHOP CAPABILITY PROCEDURE
FOR
MARATHONNORCO AIRCRAFT BATTERY
NI-CAD SERIES**

GAM/WCP/PART 2.1.3

AMENDMENT - 01

OWNER:

GALAXY AEROSPACE SDN. BHD

CAAM AMO/2016/02

DOCUMENT REFERENCE:	GAM/WCP/PART 2.1.3	DATE:	15/09/2021
AMENDMENT:	01	PAGE:	Part 1.1 1 of 1

WORKSHOP CAPABILITY PROCEDURE

PART 1.2 AMENDMENT RECORD

Each amendment of this document will be accompanied by a letter of transmittal showing the pages to be removed and those to be inserted. All pages will show the date of issue which can be cross checked with the list of effective pages to ensure it's current.

Date of Amendment	Amdt. No.	Details of Amendment
03/03/2020	Initial	Initial issue of GAM/WCP/PART 2.1.3
15/09/2021	01	<ol style="list-style-type: none"> 1. Part 1.5.2: Change from DCAM to CAAM and AN29A to CAD 8708. 2. Part 1.7.3: Model of Component under Workshop Capability: <ol style="list-style-type: none"> i. Correction on typographical error for battery type BTP-179 to BTSP-179 and CA-9-20-A to CA-9-20A. ii. All battery part number which previously reflect the battery type has been changed accordingly. iii. Removal of battery type: PTSP-440, SP-138, SP-747, TSP-1708L and TM³-44-4. iv. Inclusion of new battery type: CTSP-280-1, TSP-1760L, M³-1760L-1, M³-460L-1, M³-460L-1A and M³-460L-2. 3. Part 1.11.4: Scope Group a.II – Change from category C5 to W1 as per GAM MOE Issue 2, Revision 4.

DOCUMENT REFERENCE:	GAM/WCP/PART 2.1.3	DATE:	15/09/2021
AMENDMENT:	01	PAGE:	Part 1.1 1 of 1

WORKSHOP CAPABILITY PROCEDURE

PART 1.4 TABLE OF CONTENT

1.1	Title Page
1.2	Amendment Record
1.3	List of Effective Pages
1.4	Table of Contents
1.5	Introduction
1.6	Register of Issued MOC
1.7	Description, Scope of Capability and
1.8	List of Approved Maintenance Data
1.9	List of Equipment and Tool Requirement
1.10	Approved Facility
1.11	Certifying Personnel
1.12	Training Requirement
1.13	Sample of Workshop Worksheet

DOCUMENT REFERENCE:	GAM/WCP/PART 2.1.3	DATE:	03/03/2020
AMENDMENT:	INITIAL	PAGE:	Part 1.4 1 of 1

WORKSHOP CAPABILITY PROCEDURE

PART 1.5 INTRODUCTION

1.5.1 Introduction

- a. This Workshop Capability Procedure is to address how GAM manages its' MarathonNorco Ni-Cad Aircraft Battery workshop capabilities and activities and supporting MOE 2.9 Repair Procedure and Workshop Procedures Manual.
- b. GAM can now offer its expertise and MRO services to all carriers operating with MarathonNorco Aircraft Battery Ni-Cad. The offer includes maintenance of battery for charging and inspection, capacity test, reconditioning, cleaning and testing, disassembly and reassembly and repair and replacement.
- c. This Workshop Capability Procedure covers GAM Capability, processes and certification within GAM Workshop Approval/System.

1.5.2 Reference

- a. MCAR 2016
- b. CAAM [Civil Aviation Directives CAD 8708](#).
- c. GAM Maintenance Organisation Exposition GAM/MOE.
- d. GAM Workshop Procedure Manual GAM/WMP.
- e. MarathonNorco Operating and Maintenance Manual for Nickel-Cadmium Aircraft Batteries 24-34-00.
- f. MarathonNorco Operating and Component Maintenance Manual for Marathon Micro Maintenance (M³) Nickel-Cadmium Aircraft Batteries 24-34-08.

DOCUMENT REFERENCE:	GAM/WCP/PART 2.1.3	DATE:	15/09/2021
AMENDMENT:	01	PAGE:	Part 1.5 1 of 1

WORKSHOP CAPABILITY PROCEDURE

PART 1.6

REGISTER OF ISSUED MOC

Item	MOC Number	Significant Y/N	Rev. no.	Dated
01	GAM/MOC/19/0019	Y	Initial	20/03/2019
02	GAM/MOC/21/0038	Y	01	15/09/2021

DOCUMENT REFERENCE:	GAM/WCP/PART 2.1.3	DATE:	15/09/2021
AMENDMENT:	01	PAGE:	Part 1.1 1 of 1

WORKSHOP CAPABILITY PROCEDURE

PART 1.7 DESCRIPTION, SCOPE AND MODEL OF COMPONENT UNDER WORKSHOP CAPABILITY

1.7.1 Description

- a. This section details the GAM capability to perform maintenance checks and service to the specified MarathonNorco Aircraft Battery Ni-Cad Series.

1.7.2 Scope of Capability

- a. Maintenance for workshop capability to be carried out by GAM for MarathonNorco Aircraft Battery are as per follows:
- i. Charging and Inspection
 - ii. Capacity Test
 - iii. Reconditioning
 - iv. Cleaning and Testing
 - v. Disassembly and Reassembly
 - vi. Repair and Replacement

1.7.3 Model of Component under Workshop Capability

REFERENCE MANUAL			
MarathonNorco Operating and Maintenance Manual for Nickel-Cadmium Aircraft Batteries 24-34-00			
Battery Type	Part Number	Battery Type	Part Number
ATCA-21H	29486-001	CA-176	29487-001
ATSP-44	30978-002	CA-376	29490-001
BTCA-5-20	29094-002	PTSP-400-1	31406-002
BTMA-5	29360-001	CTSP-280-1	31995-002
BTMA-5-20	29630-002	SP-170A	30554-01C
BTSP-179	31346-001	SP-376	30596-001
BTSP-400	30441-001	SP-900A	30130-001
CA-4	18826-003	SP-1700	30135-001
CA-7	24540-007	STSP-901	31618-001
CA-9	24382-019	STSP-930	30464-001
CA-9-20A	29300-001	TCA-21H-1	28855-001
CA-10N	15890-003	TCA-21H-20	29345-001
CA-20H	27990-001	TCA-109L-1	32864-001
CA-20H-20	29341-001	TCA-1069L	33296-001
CA-21H-1	27515-002	TCA-1742	31718-002
CA-91-20	29206-001	TSP-46-1	32669-001
CA-103	27662-021	TSP-280	30986-001

DOCUMENT REFERENCE:	GAM/WCP/PART 2.1.3	DATE:	15/09/2021
AMENDMENT:	01	PAGE:	Part 1.1 1 of 2

WORKSHOP CAPABILITY PROCEDURE

Battery Type	Part Number	Battery Type	Part Number
TSP-283	31908-001	TSP-1760L	31918-001
TSP-400WB	31560-001	TSP-1742	31718-001
TSP-414	31921-002	TSP-1749L	33283-001
TSP-442	31714-001	TSP-9117A	31455-001
TSP-900A	30131-001	TSP-9117B	31455-002
TSP-1735	30402-001		

REFERENCE MANUAL			
MarathonNorco Operating and Component Maintenance Manual for Marathon Micro Maintenance (M ³) Nickel-Cadmium Aircraft Batteries 24-34-08			
Battery Type	Part Number	Battery Type	Part Number
M ³ -17-2	32855-001	M ³ -44-25	33275-001
M ³ -1760L-1	31918-003	M ³ -44-27	33204-002
M ³ -25-1 Mod A	33082-001	M ³ X-23-1	32955-002
M ³ -25-1	33082-002	M ³ X-33-2	33181-002
M ³ -28-1	33206-001	M ³ X-33-4	33181-004
M ³ -44-1	32663-001	M ³ -460L-1	31006-004
M ³ -44-7	32824-001	M ³ -460L-1A	31006-006
M ³ -44-15	32890-001	M ³ -460L-2	31006-005
M ³ -44-22	33204-001		

DOCUMENT REFERENCE:	GAM/WCP/PART 2.1.3	DATE:	15/09/2021
AMENDMENT:	01	PAGE:	Part 1.1 2 of 2

WORKSHOP CAPABILITY PROCEDURE

PART 1.8 LIST OF APPROVED MAINTENANCE DATA

1.8.1 Minimum Requirement of Approved Manuals

Model	Manuals
Micro Maintenance (M ³ Universal) Nickel-Cadmium Aircraft Battery	MarathonNorco Operating and Component Maintenance Manual for Marathon Micro Maintenance (M ³) Nickel-Cadmium Aircraft Batteries 24-34-08 Latest Revision.
Nickel-Cadmium Aircraft Battery	MarathonNorco Operating and Maintenance Manual for Nickel-Cadmium Aircraft Batteries 24-34-00 Latest Revision.

Note: Refer to <http://www.mnaerospace.com/> for the latest revision of MarathonNorco Aircraft Battery CMM, IPL and Service Bulletins / Letters.

DOCUMENT REFERENCE:	GAM/WCP/PART 2.1.3	DATE:	03/03/2020
AMENDMENT:	INITIAL	PAGE:	Part 1.8 1 of 1

WORKSHOP CAPABILITY PROCEDURE

PART 1.9 EQUIPMENT AND TOOL REQUIREMENT

1.9.1 List of Equipment and Tool Requirement

DESIGNATION	CHARACTERISTIC	USAGE		
		CHARGING & TESTING	CAPACITY TEST	DISASSEMBLY / REASSEMBLY
Battery Charger and Discharger	Constant Current Charging Range 0 – 25 ADC Constant Current Load Bank Range 0 – 50 ADC	X	X	X
Servicing Kits	MarathonNorco Maintenance Kit P/N: 33178-001 and 32480-001	X	X	X
Digital Insulation Multimeter (Capable to measure Voltage and Current)	Commercially available	X	X	X
Standard Mechanic's Tools	Commercially available	X	X	X
Infrared Thermometer	Commercially available	X	X	X
Vernier Caliper	Commercially available	X	X	X
Torque Wrench	Commercially available	X	X	X
Stiff Bristle Brush (non-metallic)	Commercially available	X	X	X
Heat Gun	Commercially available	X		

DOCUMENT REFERENCE:	GAM/WCP/PART 2.1.3	DATE:	03/03/2020
AMENDMENT:	INITIAL	PAGE:	Part 1.9 1 of 1

WORKSHOP CAPABILITY PROCEDURE

PART 1.10 APPROVED FACILITY

1.10.1 Minimum Requirement of Facility

1.10.1.1 Ni-Cad Battery Workshop

Battery	
Type of Maintenance	Requirements
Charging and Discharge Testing	No special requirements except for the environment should be well-ventilated at the temperature of between +15°C and +35°C.
Disassembly and Reassembly	No special requirements except for the area should be clean and free from dust.

1.10.2 Approved Facility for the Maintenance

- a. Avionics Workshop consists of Avionics Room, Lead Acid Battery Room and Ni-Cad Battery Room. GAM has identified Ni-Cad Battery Room under Avionics Workshop at the Galaxy Aerospace (M) Sdn Bhd headquarters (GAM HQ) as the Specific Approved Facility for all maintenance activities of MarathonNorco Aircraft Battery Ni-Cad Series.
- b. Ni-Cad Battery Room is equipped with sufficient lighting, air conditioned, wall mounted ventilation fan, workbench, workstation and a laptop computer, internet connection, fire extinguisher, fire escape plan, INCOMING, HOLDING, OUTGOING and QUARANTINE area.
- c. As there are no special requirements called for by the OEM except for minor requirements on charging and discharge testing and assembly types of maintenance, it has been decided that any maintenance facility that can meet with the two requirements are considered suitable for carrying out the maintenance work on the battery.
- d. List of approved maintenance facilities for the purpose of this capability are tabled below:

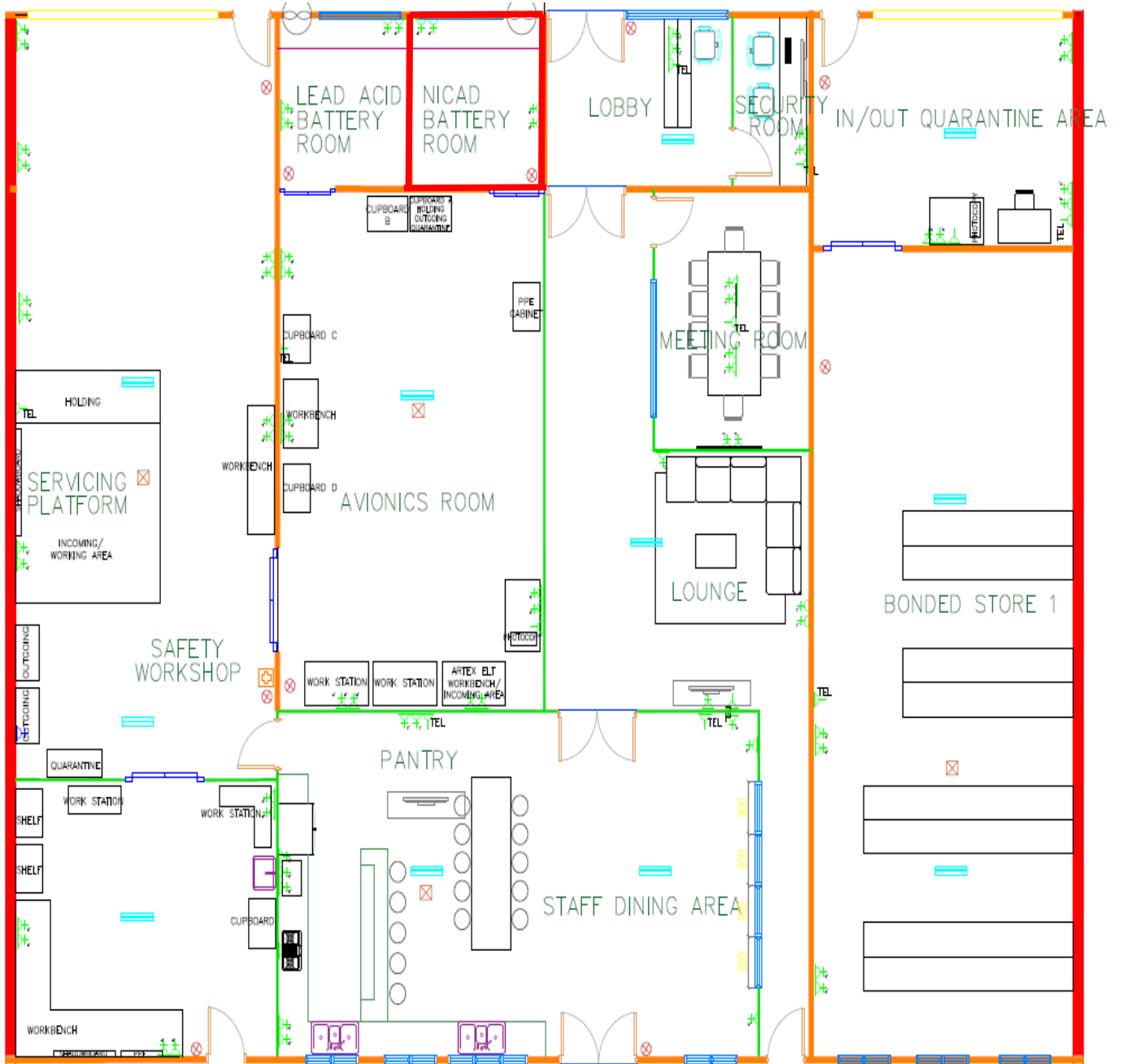
1.10.2.1 MarathonNorco Aircraft Battery Ni-Cad Series

Type of Maintenance	Requirements
Charging and Inspection, Capacity Test, Reconditioning, Cleaning and Testing, Disassembly and Reassembly Repair and Replacement	<ol style="list-style-type: none"> a. Specific Approved Facility at GAM HQ. Ni-Cad Battery Room Galaxy Aerospace (M) Sdn Bhd. Suite 11-14, Helicopter Centre, Malaysia International Aerospace Centre, Sultan Abdul Aziz Shah Airport, 47200 Subang, Selangor, Malaysia. b. Any CAAM AMO maintenance facility that can comply to the minimum facility requirement in para. 1.10.1.1, 1.10.2 (c) and approved by CAAM

DOCUMENT REFERENCE:	GAM/WCP/PART 2.1.3	DATE:	03/03/2020
AMENDMENT:	INITIAL	PAGE:	Part 1.10 1 of 3

WORKSHOP CAPABILITY PROCEDURE

1.10.3 Approved Facility – Ni-Cad Battery Room, GAM HQ



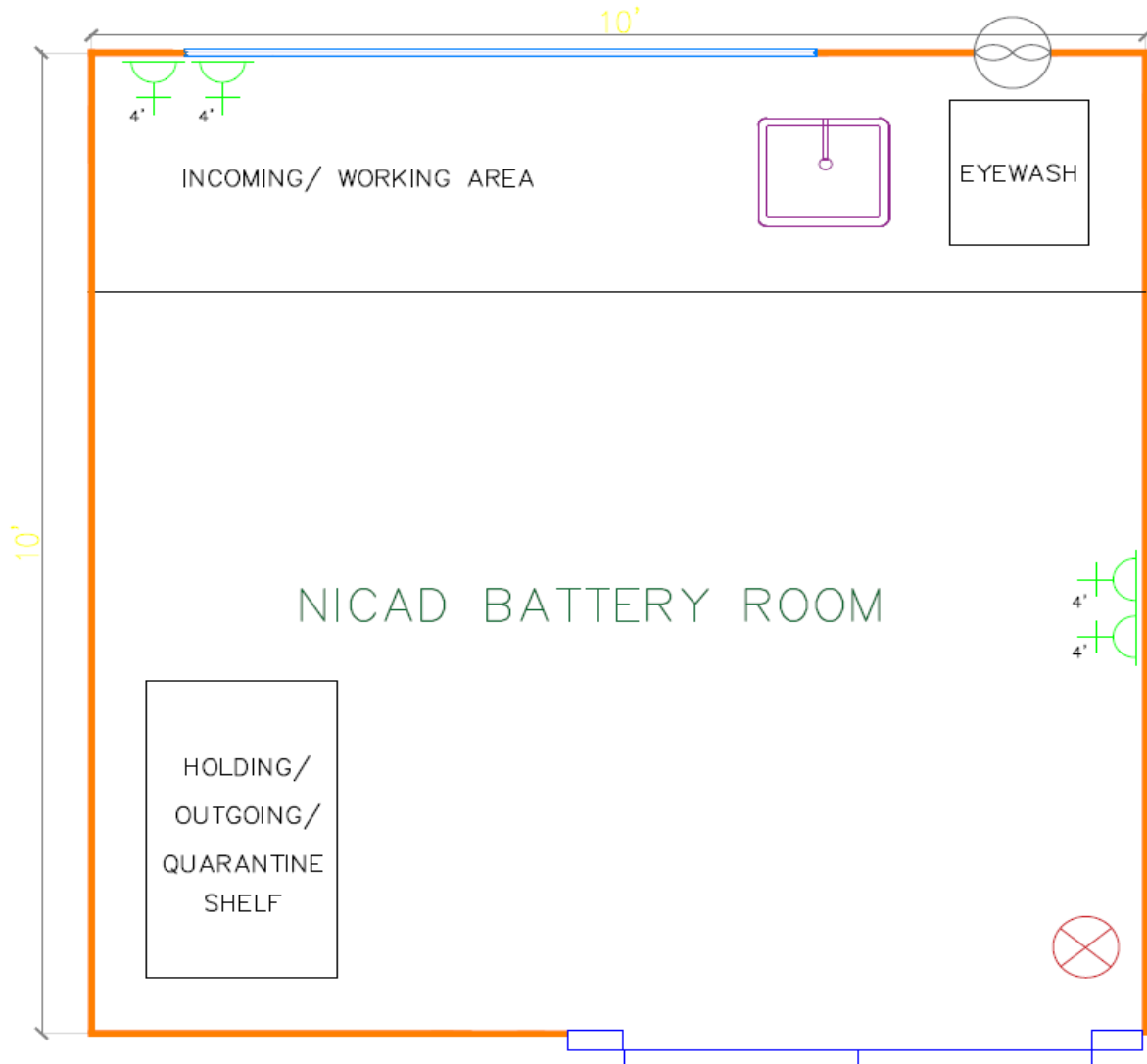
REFERENCE

-  Fire Extinguisher
-  Emergency Light
-  Smoke Detector
-  Shutter
-  Sliding door
-  Window
-  First Aid Kit
-  Sink
-  Ventilation Fan

DOCUMENT REFERENCE:	GAM/WCP/PART 2.1.3	DATE:	03/03/2020
AMENDMENT:	INITIAL	PAGE:	Part 1.10 2 of 3

WORKSHOP CAPABILITY PROCEDURE

1.10.3.1 Approved Facility – Ni-Cad Battery Room, GAM HQ



REFERENCE

- Fire Extinguisher
- Emergency Light
- Smoke Detector
- Shutter
- Sliding door
- Window
- First Aid Kit
- Sink
- Ventilation Fan

DOCUMENT REFERENCE:	GAM/WCP/PART 2.1.3	DATE:	03/03/2020
AMENDMENT:	INITIAL	PAGE:	Part 1.10 3 of 3

WORKSHOP CAPABILITY PROCEDURE

PART 1.11 CERTIFYNG PERSONNEL

1.11.1 Requirement for Certifying Personnel (WMP Part 1.7.5)

- a. For aircraft requirement is a B2 Company Approval Holder on type.
- b. For a Company Approval Holder on Category C; Component C5 on MarathonNorco Aircraft Battery Ni-Cad Series.

1.11.2 Minimum Qualification for Company Approval

- a. As laid down in MOE Part 3.4.

1.11.3 Assessment on Certifying Personnel

- a. Certifying Personnel are subjected to Technical Competency Assessment i.a.w MOE Part 3.4.

1.11.4 List of Company Approval Holders

- a. List of Current Approval Holders of Component C5 on MarathonNorco Battery are listed as table below.

Scope Group	Approval Holders
a.I	B2 Category Approval Holder on type Approval Holder as listed in GAM/Q-001 (List of Approval Holder) of the latest revision.
a.II	B2 and W1 Category Approval Holder as listed in GAM/Q-001 (List of Approval Holder) of the latest revision.

DOCUMENT REFERENCE:	GAM/WCP/PART 2.1.3	DATE:	15/09/2021
AMENDMENT:	01	PAGE:	Part 1.1 1 of 1

WORKSHOP CAPABILITY PROCEDURE

PART 1.12 TRAINING REQUIREMENT

1.12.1 Requirement of Training for Certifying Personnel

- a. No specific training is required by MarathonNorco for Certifying Personnel to perform the maintenance.
- b. Certifying Personnel shall need to comply with the minimum training requirement as required by MOE Part 3.4.

DOCUMENT REFERENCE:	GAM/WCP/PART 2.1.3	DATE:	03/03/2020
AMENDMENT:	INITIAL	PAGE:	Part 1.12 1 of 1

WORKSHOP CAPABILITY PROCEDURE

PART 1.13 SAMPLE WORKSHEET

1. **Micro Maintenance (M3) Nickel-Cadmium Aircraft Battery Workshop Worksheet**
Refer attachment I

2. **Nickel-Cadmium Aircraft Battery Workshop Worksheet**
Refer attachment II

DOCUMENT REFERENCE:	GAM/WCP/PART 2.1.3	DATE:	03/03/2020
AMENDMENT:	INITIAL	PAGE:	Part 1.13 1 of 3

WORKSHOP CAPABILITY PROCEDURE

ATTACHMENT I

DOCUMENT REFERENCE:	GAM/WCP/PART 2.1.3	DATE:	03/03/2020
AMENDMENT:	INITIAL	PAGE:	Part 1.13 2 of 3

WORKSHOP CAPABILITY PROCEDURE

ATTACHMENT II

DOCUMENT REFERENCE:	GAM/WCP/PART 2.1.3	DATE:	03/03/2020
AMENDMENT:	INITIAL	PAGE:	Part 1.13 3 of 3

**WORKSHOP CAPABILITY PROCEDURE
FOR
CONCORDE AIRCRAFT BATTERY
LEAD-ACID SERIES**

GAM/WCP/PART 2.1.4

AMENDMENT - 02

OWNER:

GALAXY AEROSPACE SDN. BHD

CAAM AMO/2016/02

DOCUMENT REFERENCE:	GAM/WCP/PART 2.1.4	DATE:	19/07/2021
AMENDMENT:	02	PAGE:	Part 1.1 1 of 1

WORKSHOP CAPABILITY PROCEDURE

PART 1.2 AMENDMENT RECORD

Each amendment of this document will be accompanied by a letter of transmittal showing the pages to be removed and those to be inserted. All pages will show the date of issue which can be cross checked with the list of effective pages to ensure it's current.

Date of Amendment	Amdt. No.	Details of Amendment
03/03/2020	Initial	Initial issue of GAM/WCP/PART 2.1.4
01/03/2021	01	Corrections/Changes on Part 1.8.1 Minimum Requirement of Approved Manuals Model / Type - Description, Part 1.10.1.1 Charging and Capacity Testing - temperature range, Part 1.11.4 Scope Group a.II - Category C change to W1, and Part 1.7.3 Model of Component under Workshop Capability - Inclusion of new Concorde battery Part Number – RG-12LSA, RG-25, RG-35A, RG-35AXC, RG24-9, RG24-10, RG24-11, RG24-11M, RG24-12, RG24-15M, RG24-16, RG24-17, RG-145-1, RG-206, RG-209, RG-213, RG-222, RG-223, RG-224, RG-235, RG-292-102, RG-292-103A, RG-330, RG-380E/40B, RG-380E/40D, RG-380E/40K, RG-380E/40KS, RG-380E/40L, RG-380E/40LS, RG-380E/44, RG-380E/44KS, RG-380E/44L, RG-380E/44LS, RG-380E/46, RG-380E/46K, RG-380E/46KS, RG-380E/46L, RG-380E/46LS, RG-380E/53K, RG-380E/53KS, RG-380E/53L, RG-380E/53LS, RG-380E/60B, RG-380E/60K, RG-380E/60KS, RG-380E/60LS, RG-390E, RG-390E/25, RG-390E/25L, RG-390E/25LS, RG-390E/25S, RG-390E/30, RG-390E/30L, RG-390E/30LS, RG-390E/30S, RG-390E/L, RG-390E/LS, RG-390ES, RG-400E/13, RG-41/53, RG-418-1, RG-42, RG-427, RG-442, RG-445E, RG-47, RG-49, RG-500, RG-600-1, RG-600-2, RG-624, RG-641, RG-76, RG-91.
19/07/2021	02	Changes from DCAM to CAAM and AN29A to CAD 8708.

DOCUMENT REFERENCE:	GAM/WCP/PART 2.1.4	DATE:	19/07/2021
AMENDMENT:	02	PAGE:	Part 1.2 1 of 1

WORKSHOP CAPABILITY PROCEDURE

PART 1.4 TABLE OF CONTENT

1.1	Title Page
1.2	Amendment Record
1.3	List of Effective Pages
1.4	Table of Contents
1.5	Introduction
1.6	Register of Issued MOC
1.7	Description, Scope of Capability and
1.8	List of Approved Maintenance Data
1.9	List of Equipment and Tool Requirement
1.10	Approved Facility
1.11	Certifying Personnel
1.12	Training Requirement
1.13	Sample of Workshop Worksheet

DOCUMENT REFERENCE:	GAM/WCP/PART 2.1.4	DATE:	03/03/2020
AMENDMENT:	INITIAL	PAGE:	Part 1.4 1 of 1

WORKSHOP CAPABILITY PROCEDURE

PART 1.5 INTRODUCTION

1.5.1 Introduction

- a. This Workshop Capability Procedure is to address how GAM manages its' Concorde Aircraft Battery workshop capabilities and activities and supporting MOE 2.9 Repair Procedure and Workshop Procedures Manual.
- b. GAM can now offer its expertise and MRO services to all carriers operating with Concorde Aircraft Battery Lead-Acid. The offer includes maintenance of battery for charging and inspection, capacity testing and repair and disposal.
- c. This Workshop Capability Procedure covers GAM Capability, processes and certification within GAM Workshop Approval/System.

1.5.2 Reference

- a. MCAR 2016
- b. CAAM [Civil Aviation Directives CAD 8708](#).
- c. GAM Maintenance Organisation Exposition GAM/MOE
- d. GAM Workshop Procedure Manual GAM/WMP
- e. Concorde RG Series Main Aircraft Battery Component Maintenance Manual 24-30-71 Document Number 5-0171.

DOCUMENT REFERENCE:	GAM/WCP/PART 2.1.4	DATE:	19/07/2021
AMENDMENT:	02	PAGE:	Part 1.5 1 of 1

WORKSHOP CAPABILITY PROCEDURE

PART 1.6 REGISTER OF ISSUED MOC

Item	MOC Number	Significant Y/N	Rev. no.	Dated
01	GAM/MOC/19/0026	Y	Initial	05/04/2019
02	GAM/MOC/21/0011	Y	01	01/03/2021
03	GAM/MOC/21/0029	Y	02	19/07/2021

DOCUMENT REFERENCE:	GAM/WCP/PART 2.1.4	DATE:	19/07/2021
AMENDMENT:	02	PAGE:	Part 1.6 1 of 1

WORKSHOP CAPABILITY PROCEDURE

PART 1.7 DESCRIPTION, SCOPE AND MODEL OF COMPONENT UNDER WORKSHOP CAPABILITY

1.7.1 Description

- a. This section details the capability to perform maintenance check
- b. s to specified Concorde Aircraft Battery Lead-Acid Series.

1.7.2 Scope of Capability

- a. Maintenance for workshop capability to be carried out by GAM for Concorde Aircraft Battery Lead-Acid Series are as per follows:
 - i. Charging and Inspection
 - ii. Capacity Testing
 - iii. Repair and Disposal

1.7.3 Model of Component under Workshop Capability

MODEL / TYPE			
General Aviation Batteries - Concorde RG Series Main Aircraft Battery			
Concorde Part Number	Rated Capacity C1 (Ah)	Concorde Part Number	Rated Capacity C1 (Ah)
RG-12LSA	11	RG24-11M	11
RG-25	22	RG24-12	11
RG-25XC	24	RG24-15	13.6
RG-35A	29	RG24-15M	13.6
RG-35AXC	33	RG24-16	13.6
RG24-9	8.5	RG24-17	16
RG24-10	8.5	RG24-20	19
RG24-11	11		

MODEL / TYPE			
Turbine Starting Batteries - Concorde RG Series Main Aircraft Battery			
Concorde Part Number	Rated Capacity C1 (Ah)	Concorde Part Number	Rated Capacity C1 (Ah)
RG-145-1	17	RG-223	17
RG-206	17	RG-224	24
RG-209	22	RG-235	44
RG-213	13	RG-292-102	17
RG-222	17	RG-292-103A	24

DOCUMENT REFERENCE:	GAM/WCP/PART 2.1.4	DATE:	01/03/2021
AMENDMENT:	01	PAGE:	Part 1.7 1 of 2

WORKSHOP CAPABILITY PROCEDURE

Concorde Part Number	Rated Capacity C1 (Ah)	Concorde Part Number	Rated Capacity C1 (Ah)
RG-325	25	RG-390E	28
RG-330	30	RG-390E/25	25
RG-350	17	RG-390E/25L	25
RG-355	17	RG-390E/25LS	25
RG-380E/40B	38	RG-390E/25S	25
RG-380E/40D	38	RG-390E/30	30
RG-380E/40K	38	RG-390E/30L	30
RG-380E/40KS	38	RG-390E/30LS	30
RG-380E/40L	38	RG-390E/30S	30
RG-380E/40LS	38	RG-390E/L	28
RG-380E/44	42	RG-390E/LS	28
RG-380E/44K	42	RG-390ES	28
RG-380E/44KS	42	RG-400E/13	13
RG-380E/44L	42	RG-407	27
RG-380E/44LS	42	RG-41/53	53
RG-380E/46	46	RG-418-1	28
RG-380E/46K	46	RG-42	17
RG-380E/46KS	46	RG-427	34
RG-380E/46L	46	RG-442	44
RG-380E/46LS	46	RG-445E	18
RG-380E/53K	53	RG-47	17
RG-380E/53KS	53	RG-49	17
RG-380E/53L	53	RG-500	17
RG-380E/53LS	53	RG-600-1	17
RG-380E/60B	48	RG-600-2	17
RG-380E/60K	48	RG-624	24
RG-380E/60KS	48	RG-641	17
RG-380E/60L	48	RG-76	44
RG-380E/60LS	48	RG-91	22

DOCUMENT REFERENCE:	GAM/WCP/PART 2.1.4	DATE:	01/03/2021
AMENDMENT:	01	PAGE:	Part 1.7 2 of 2

WORKSHOP CAPABILITY PROCEDURE

PART 1.8 LIST OF APPROVED MAINTENANCE DATA

1.8.1 Minimum Requirement of Approved Manuals

Model / Type	Manuals
General Aviation Batteries and Turbine Starting Batteries	Concorde RG Series Main Aircraft Battery Component Maintenance Manual 24-30-71 Document Number 5-0171 Latest Revision.

Note: Refer to http://www.concordebattery.com/main_air_tech.php for the latest Concorde Aircraft Battery CMM, IPL and Service Bulletins / Letters.

DOCUMENT REFERENCE:	GAM/WCP/PART 2.1.4	DATE:	01/03/2021
AMENDMENT:	01	PAGE:	Part 1.8 1 of 1

WORKSHOP CAPABILITY PROCEDURE

PART 1.9 EQUIPMENT, TOOL and CONSUMABLE REQUIREMENT

1.9.1 List of Equipment, Tool and Consumable Requirement

DESIGNATION	CHARACTERISTIC	USAGE	
		CHARGING	CAPACITY TESTING
Battery Charger and Discharger	Constant Current Charging Range 0 – 25 ADC Constant Current Load Bank Range 0 – 55 ADC Constant Voltage Charging Range 14.00 – 14.25 VDC and 28.00 – 28.50 VDC	X	X
Digital Multimeter (Capable to measure Voltage and Current)	Commercially available	X	X
Standard Mechanic's Tools	Commercially available	X	X
Lint-Free Cloth	Commercially available	X	X

DOCUMENT REFERENCE:	GAM/WCP/PART 2.1.4	DATE:	03/03/2020
AMENDMENT:	INITIAL	PAGE:	Part 1.9 1 of 1

WORKSHOP CAPABILITY PROCEDURE

PART 1.10 APPROVED FACILITY

1.10.1 Minimum Requirement of Facility

1.10.1.1 Lead-Acid Battery Workshop

Battery	
Type of Maintenance	Requirements
Charging and Capacity Testing	No special requirements except for the environment should be well-ventilated at the temperature of between +21°C and +25°C.
Repair and Disposal	No special requirements except for the area should be clean and free from dust.

1.10.2 Approved Facility for the Maintenance

- a. Avionics Workshop consists of Avionics Room, Lead-Acid Battery Room and Ni-Cad Battery Room. GAM has identified Lead-Acid Battery Room under Avionics Workshop at the Galaxy Aerospace (M) Sdn Bhd headquarters (GAM HQ) as the Specific Approved Facility for all maintenance activities of Concorde Aircraft Battery Lead-Acid Series.
- b. Lead-Acid Battery Room is equipped with sufficient lighting, air conditioned, wall mounted ventilation fan, workbench, workstation and a laptop computer, internet connection, fire extinguisher, fire escape plan, INCOMING, HOLDING, OUTGOING and QUARANTINE area.
- c. As there are no special requirements called for by the OEM except for minor requirements on charging and discharge testing types of maintenance, it has been decided that any maintenance facility that can meet with the two requirements are considered suitable for carrying out the maintenance work on the battery.
- d. List of approved maintenance facilities for the purpose of this capability are tabled below:

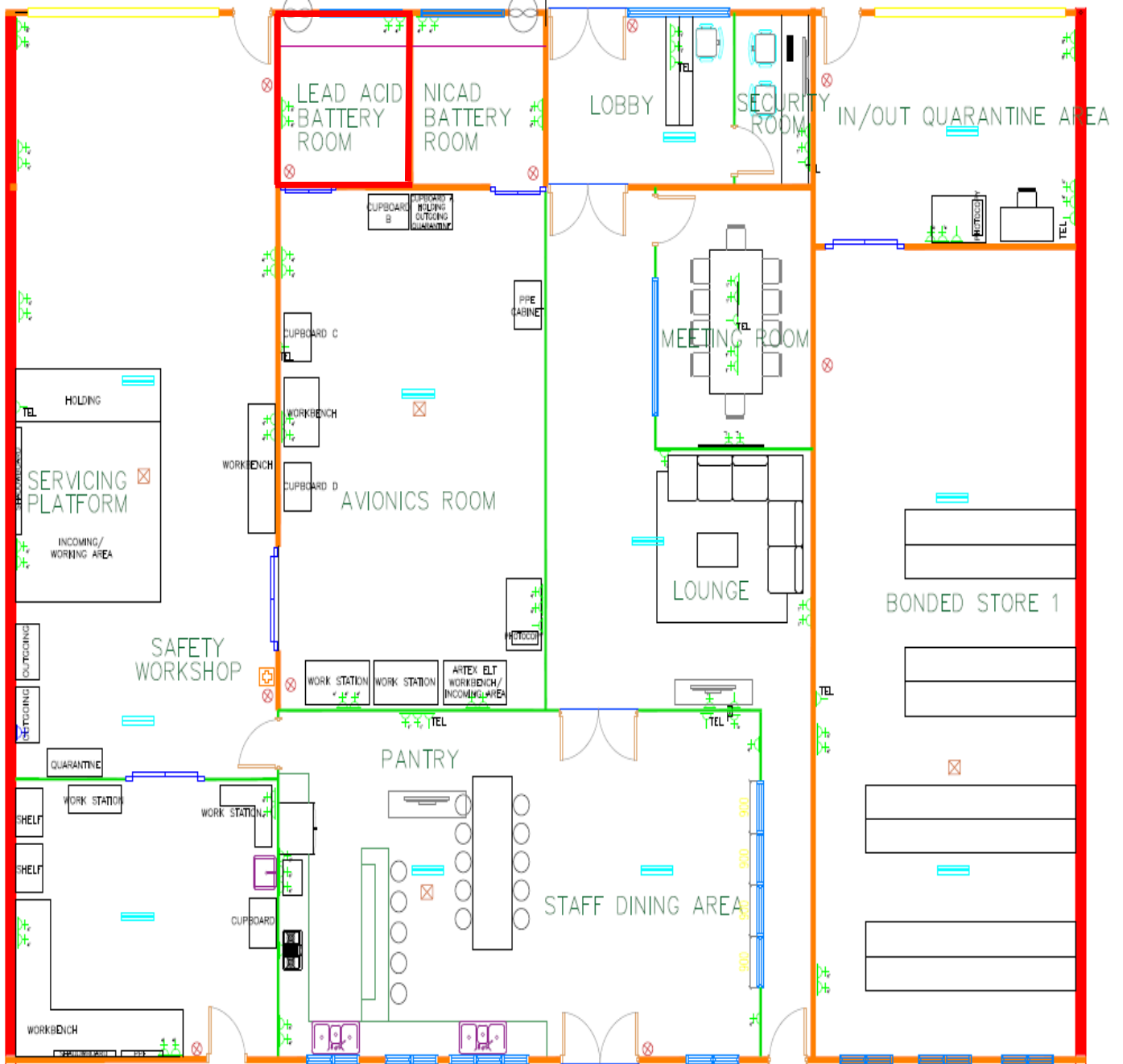
1.10.2.1 Concorde Aircraft Battery Lead-Acid Series

Type of Maintenance	Requirements
Charging and Inspection, Capacity Testing, Repair and Disposal	<ol style="list-style-type: none"> a. Specific Approved Facility at GAM HQ. Lead Acid Battery Room Galaxy Aerospace (M) Sdn Bhd. Suite 11-14, Helicopter Centre, Malaysia International Aerospace Centre, Sultan Abdul Aziz Shah Airport, 47200 Subang, Selangor, Malaysia. b. Any CAAM AMO maintenance facility that can comply to the minimum facility requirement in para. 1.10.1.1, 1.10.2 (c) and approved by CAAM

DOCUMENT REFERENCE:	GAM/WCP/PART 2.1.4	DATE:	01/03/2021
AMENDMENT:	01	PAGE:	Part 1.10 1 of 3

WORKSHOP CAPABILITY PROCEDURE

1.10.3 Approved Facility – Lead-Acid Battery Room, GAM HQ



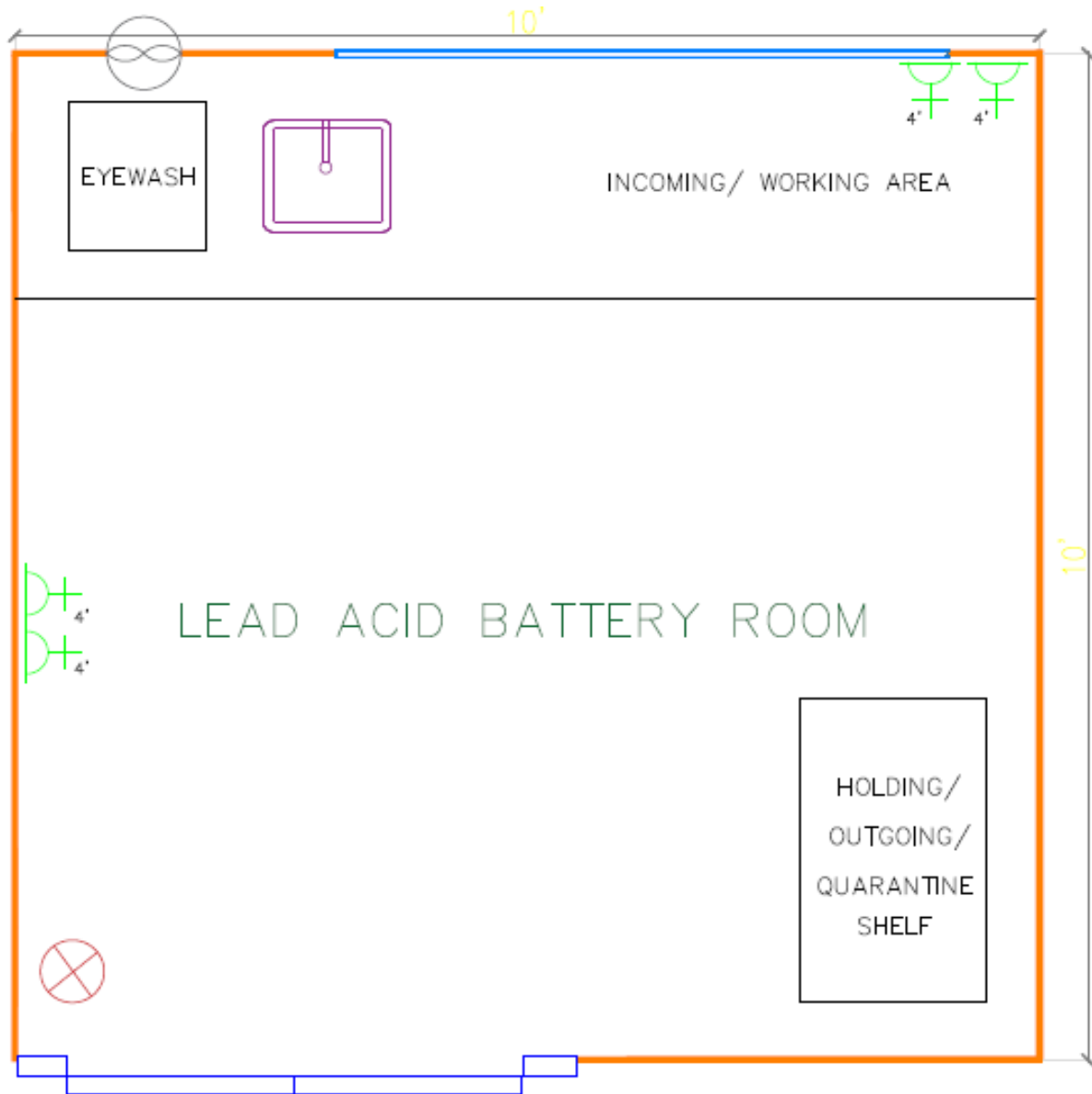
REFERENCE

-  Fire Extinguisher
-  Emergency Light
-  Smoke Detector
-  Shutter
-  Sliding door
-  Window
-  First Aid Kit
-  Sink
-  Ventilation Fan

DOCUMENT REFERENCE:	GAM/WCP/PART 2.1.4	DATE:	01/03/2021
AMENDMENT:	01	PAGE:	Part 1.10 2 of 3

WORKSHOP CAPABILITY PROCEDURE

1.10.3.1 Approved Facility – Lead-Acid Battery Room, GAM HQ



REFERENCE

- Fire Extinguisher
- Emergency Light
- Smoke Detector
- Shutter
- Sliding door
- Window
- First Aid Kit
- Sink
- Ventilation Fan

DOCUMENT REFERENCE:	GAM/WCP/PART 2.1.4	DATE:	01/03/2021
AMENDMENT:	01	PAGE:	Part 1.10 3 of 3

WORKSHOP CAPABILITY PROCEDURE

PART 1.11 CERTIFYING PERSONNEL

1.11.1 Requirement for Certifying Personnel (WMP Part 1.7.5)

- a. For aircraft requirement is a B2 Company Approval Holder on type.
- b. For a Company Approval Holder on Category C; Component C5 on Concorde Aircraft Battery Lead-Acid Series.

1.11.2 Minimum Qualification for Company Approval

- a. As laid down in MOE Part 3.4.

1.11.3 Assessment on Certifying Personnel

- a. Certifying Personnel are subjected to Technical Competency Assessment i.a.w MOE Part 3.4.

1.11.4 List of Company Approval Holders

- a. List of Current Approval Holders of Component C5 on Concorde Battery are listed as table below.

Scope Group	Approval Holders
a.I	B2 Category Approval Holder on type Approval Holder as listed in GAM/Q-001 (List of Approval Holder) of the latest revision.
a.II	B2 and W1 Category Approval Holder as listed in GAM/Q-001 (List of Approval Holder) of the latest revision.

DOCUMENT REFERENCE:	GAM/WCP/PART 2.1.4	DATE:	01/03/2021
AMENDMENT:	01	PAGE:	Part 1.11 1 of 1

WORKSHOP CAPABILITY PROCEDURE

PART 1.12 TRAINING REQUIREMENT

1.12.1 Requirement of Training for Certifying Personnel

- a. No specific training is required by Concorde for Certifying Personnel to perform the maintenance.
- b. Certifying Personnel shall need to comply with the minimum training requirement as required by MOE Part 3.4.

DOCUMENT REFERENCE:	GAM/WCP/PART 2.1.4	DATE:	03/03/2020
AMENDMENT:	INITIAL	PAGE:	Part 1.12 1 of 1

WORKSHOP CAPABILITY PROCEDURE

PART 1.13

SAMPLE WORKSHEET

1. **Concorde RG Series Main Aircraft Battery Workshop Worksheet**
Refer attachment I

DOCUMENT REFERENCE:	GAM/WCP/PART 2.1.4	DATE:	03/03/2020
AMENDMENT:	INITIAL	PAGE:	Part 1.13 1 of 2

WORKSHOP CAPABILITY PROCEDURE

ATTACHMENT I

DOCUMENT REFERENCE:	GAM/WCP/PART 2.1.4	DATE:	03/03/2020
AMENDMENT:	INITIAL	PAGE:	Part 1.13 2 of 2

**WORKSHOP CAPABILITY PROCEDURE
FOR
GILL LEAD-ACID SERIES
AIRCRAFT BATTERIES**

GAM/WCP/PART 2.1.10

AMENDMENT - 01

OWNER:

GALAXY AEROSPACE SDN. BHD

CAAM AMO/2016/02

DOCUMENT REFERENCE:	GAM/WCP/PART 2.1.10	DATE:	19/07/2021
AMENDMENT:	01	PAGE:	Part 1.1 1 of 1

WORKSHOP CAPABILITY PROCEDURE

PART 1.2 AMENDMENT RECORD

Each amendment of this document will be accompanied by a letter of transmittal showing the pages to be removed and those to be inserted. All pages will show the date of issue which can be cross checked with the list of effective pages to ensure it's current.

Date of Amendment	Amdt. No.	Details of Amendment
03/02/2021	Initial	Initial issue of GAM/WCP/PART 2.1.10
19/07/2021	01	Changes from DCAM to CAAM and AN29A to CAD 8708. Part 1.13 - Sample of Workshop Worksheet. i. Battery service manual was highlighted for each sample of worksheet. Item no 5 and 6 removed. ii. 2 more pages added on this part.

DOCUMENT REFERENCE:	GAM/WCP/PART 2.1.10	DATE:	19/07/2021
AMENDMENT:	01	PAGE:	Part 1.2 1 of 1

WORKSHOP CAPABILITY PROCEDURE

PART 1.4 TABLE OF CONTENT

1.1	Title Page
1.2	Amendment Record
1.3	List of Effective Pages
1.4	Table of Contents
1.5	Introduction
1.6	Register of Issued MOC
1.7	Description, Scope of Capability and
1.8	List of Approved Maintenance Data
1.9	List of Equipment and Tool Requirement
1.10	Approved Facility
1.11	Certifying Personnel
1.12	Training Requirement
1.13	Sample of Workshop Worksheet

DOCUMENT REFERENCE:	GAM/WCP/PART 2.1.10	DATE:	03/02/2021
AMENDMENT:	INITIAL	PAGE:	Part 1.4 1 of 1

WORKSHOP CAPABILITY PROCEDURE

PART 1.5 INTRODUCTION

1.5.1 Introduction

- a. This Workshop Capability Procedure is to address how GAM manages its' Gill Lead-Acid Aircraft Battery workshop capabilities and activities and supporting MOE 2.9 Repair Procedure and Workshop Procedures Manual.
- b. GAM can now offer its expertise and MRO services to all carriers operating with Gill Lead-Acid Aircraft Battery. The offer includes maintenance of battery for charging, capacity testing and filling (activation).
- c. This Workshop Capability Procedure covers GAM Capability, processes and certification within GAM Workshop Approval/System.

1.5.2 Reference

- a. MCAR 2016.
- b. CAAM [Civil Aviation Directives CAD 8708](#).
- c. GAM Maintenance Organisation Exposition GAM/MOE.
- d. GAM Workshop Procedure Manual GAM/WMP.
- e. Gill Teledyne Battery Products Dry-Charged Lead-Acid Aircraft Battery Service Manual Q01-1120 latest revision.
- f. Gill Teledyne Battery Products Component Maintenance Manual 7000 Series LT Valve-Regulated Lead-Acid Batteries Q01-1101 latest revision.
- g. Gill Teledyne Battery Products Component Maintenance Manual LT Valve-Regulated Lead-Acid Batteries Q01-2001 latest revision.
- h. Gill Teledyne Battery Products Component Maintenance Manual LT Valve-Regulated Lead-Acid Batteries Q01-4000 latest revision.

DOCUMENT REFERENCE:	GAM/WCP/PART 2.1.10	DATE:	19/07/2021
AMENDMENT:	01	PAGE:	Part 1.5 1 of 1

WORKSHOP CAPABILITY PROCEDURE

PART 1.6 REGISTER OF ISSUED MOC

Item	MOC Number	Significant Y/N	Rev. no.	Dated
01	GAM/MOC/20/0026	Y	Initial	13/04/2020
02	GAM/MOC/21/0030	Y	01	19/07/2021

DOCUMENT REFERENCE:	GAM/WCP/PART 2.1.10	DATE:	19/07/2021
AMENDMENT:	01	PAGE:	Part 1.6 1 of 1

WORKSHOP CAPABILITY PROCEDURE

PART 1.7 DESCRIPTION, SCOPE AND MODEL OF COMPONENT UNDER WORKSHOP CAPABILITY

1.7.1 Description

- a. This section details the capability to perform maintenance checks to specified Gill Lead-Acid Aircraft Battery.

1.7.2 Scope of Capability

- a. Maintenance for workshop capability to be carried out by GAM for Gill Lead-Acid Aircraft Battery are as per follows:
 - i. Charging
 - ii. Capacity Testing
 - iii. Filling (Activation)

1.7.3 Model of Component under Workshop Capability.

MODEL / SERIES			
Gill Dry-Charged Lead-Acid Aircraft Battery			
Gill Part Number	1 Hour Rate (C1)	Gill Part Number	1 Hour Rate (C1)
G-25	18Ah	G-247	19Ah
G-35	23Ah	GE-50E	31Ah
G-35M	23Ah	GE-51E	22Ah
G-240	8Ah	GE-54E	10Ah
G-241	8Ah	G-638E	37Ah
G-242	10Ah	G-6381E	43Ah
G-243	10Ah	G-639E	24Ah
G-244	18Ah	G-640E	14Ah
G-245	18Ah	G-641	18Ah
G-246	19Ah		

DOCUMENT REFERENCE:	GAM/WCP/PART 2.1.10	DATE:	03/02/2021
AMENDMENT:	INITIAL	PAGE:	Part 1.7 1 of 2

WORKSHOP CAPABILITY PROCEDURE

MODEL / SERIES			
Gill 7000 Series LT Valve-Regulated Lead-Acid Batteries			
Gill Part Number	1 Hour Rate (C1)	Gill Part Number	1 Hour Rate (C1)
7025-20	20Ah	7639-25	25Ah
7025-24	24Ah	7639-27	27Ah
7035-28	28Ah	7639-30LT	30Ah
7035-34	34Ah	7639-34	34Ah
7242-14	14Ah	7641-20	20Ah
7242-16	16Ah	7638-36	36Ah
7243-14	14Ah	7638-44	44Ah
7243-16	16Ah	7638-44T	44Ah
7246-20	20Ah	7638-44ST	44Ah
7246-20AT	20Ah	7638-48P	48Ah
7407-28	28Ah	7638-53	53Ah

MODEL / SERIES			
Bell Helicopter LT Valve-Regulated Lead-Acid Batteries			
Gill Part Number	1 Hour Rate (C1)	Gill Part Number	1 Hour Rate (C1)
7407-28	28Ah	7638-44	44Ah
7639-25	25Ah	7638-53	53Ah
7638-36	36Ah		

MODEL / SERIES			
Embraer (Phenom 100 and 300) LT Valve-Regulated Lead-Acid Batteries			
Gill Part Number	1 Hour Rate (C1)	Gill Part Number	1 Hour Rate (C1)
7639-27	27Ah	7638-36	36Ah
7639-30LT	30Ah	7638-48P	48Ah
7639-34	34Ah		

DOCUMENT REFERENCE:	GAM/WCP/PART 2.1.10	DATE:	03/02/2021
AMENDMENT:	INITIAL	PAGE:	Part 1.7 2 of 2

WORKSHOP CAPABILITY PROCEDURE

PART 1.8 LIST OF APPROVED MAINTENANCE DATA

1.8.1 Minimum Requirement of Approved Manuals

Model/Series	Manuals
Gill Dry-Charged Lead-Acid Aircraft Battery	Gill Teledyne Battery Products Dry-Charged Lead-Acid Aircraft Battery Service Manual Q01-1120 latest revision.
Gill 7000 Series LT Valve-Regulated Lead-Acid Batteries	Gill Teledyne Battery Products Component Maintenance Manual 7000 Series LT Valve-Regulated Lead-Acid Batteries Q01-1101 latest revision
Bell Helicopter LT Valve-Regulated Lead-Acid Batteries	Gill Teledyne Battery Products Component Maintenance Manual LT Valve-Regulated Lead-Acid Batteries Q01-2001 latest revision.
Embraer (Phenom 100 and 300) LT Valve-Regulated Lead-Acid Batteries	Gill Teledyne Battery Products Component Maintenance Manual LT Valve-Regulated Lead-Acid Batteries Q01-4000 latest revision.

Note: Refer to <http://www.gillbatteries.com/Products/Maintenance> for the latest Gill Aircraft Battery Component Maintenance Manual, Service Manual & Material Safety Data Sheet

DOCUMENT REFERENCE:	GAM/WCP/PART 2.1.10	DATE:	03/02/2021
AMENDMENT:	INITIAL	PAGE:	Part 1.8 1 of 1

WORKSHOP CAPABILITY PROCEDURE

PART 1.9 EQUIPMENT, TOOL and CONSUMABLE REQUIREMENT

1.9.1 List of Equipment, Tool and Consumable Requirement

DESIGNATION	CHARACTERISTIC	USAGE		
		CHARGING & TESTING	CAPACITY TEST	FILLING (ACTIVATION)
Battery Charger and Discharger	Constant Current Charging Range 0 – 25 ADC Constant Current Load Bank Range 0 – 50 ADC Constant Voltage Charging Range 13.90 – 14.50 VDC and 28.20 – 29.00 VDC	X	X	X
Digital Multimeter (Capable to measure Voltage and Current)	Commercially available	X	X	X
Standard Mechanic's Tools	Commercially available	X	X	X
Hydrometer	Range 1.110 to 1.300 s.g. units	X	X	X
Infrared Thermometer	Commercially available	X	X	X
Safety Goggle	Commercially available	X	X	X
Acid Resistant Gloves	Commercially available	X	X	X
Acid Resistant Apron	Commercially available	X	X	X

DOCUMENT REFERENCE:	GAM/WCP/PART 2.1.10	DATE:	03/02/2021
AMENDMENT:	INITIAL	PAGE:	Part 1.9 1 of 1

WORKSHOP CAPABILITY PROCEDURE

PART 4.10 APPROVED FACILITY

1.10. Minimum Requirement of Facility

1.10.1.1 Lead-Acid Battery Workshop

Battery	
Type of Maintenance	Requirements
Charging, Capacity Testing and Filling (Activation)	Charging should be conducted in a well-ventilated area at ambient conditions ranging from 65°F to 80°F (18.3°C to 26.6°C). Area should be clean and free from dust.

1.10.2 Approved Facility for the Maintenance

- a. Avionics Workshop consists of Avionics Room, Lead-Acid Battery Room and Ni-Cad Battery Room. GAM has identified Lead-Acid Battery Room under Avionics Workshop at the Galaxy Aerospace (M) Sdn Bhd headquarters (GAM HQ) as the Specific Approved Facility for all maintenance activities of Gill Aircraft Battery Lead-Acid Series.
- b. Lead-Acid Battery Room is equipped with sufficient lighting, air conditioned, wall mounted ventilation fan, workbench, workstation and a laptop computer, internet connection, fire extinguisher, fire escape plan, INCOMING, HOLDING, OUTGOING and QUARANTINE area and equipment storage cabinet.
- c. As there are no special requirements called for by the OEM except for minor requirements on charging and discharge testing types of maintenance, it has been decided that any maintenance facility that can meet with the two requirements are considered suitable for carrying out the maintenance work on the battery.
- d. List of approved maintenance facilities for the purpose of this capability are tabled below:

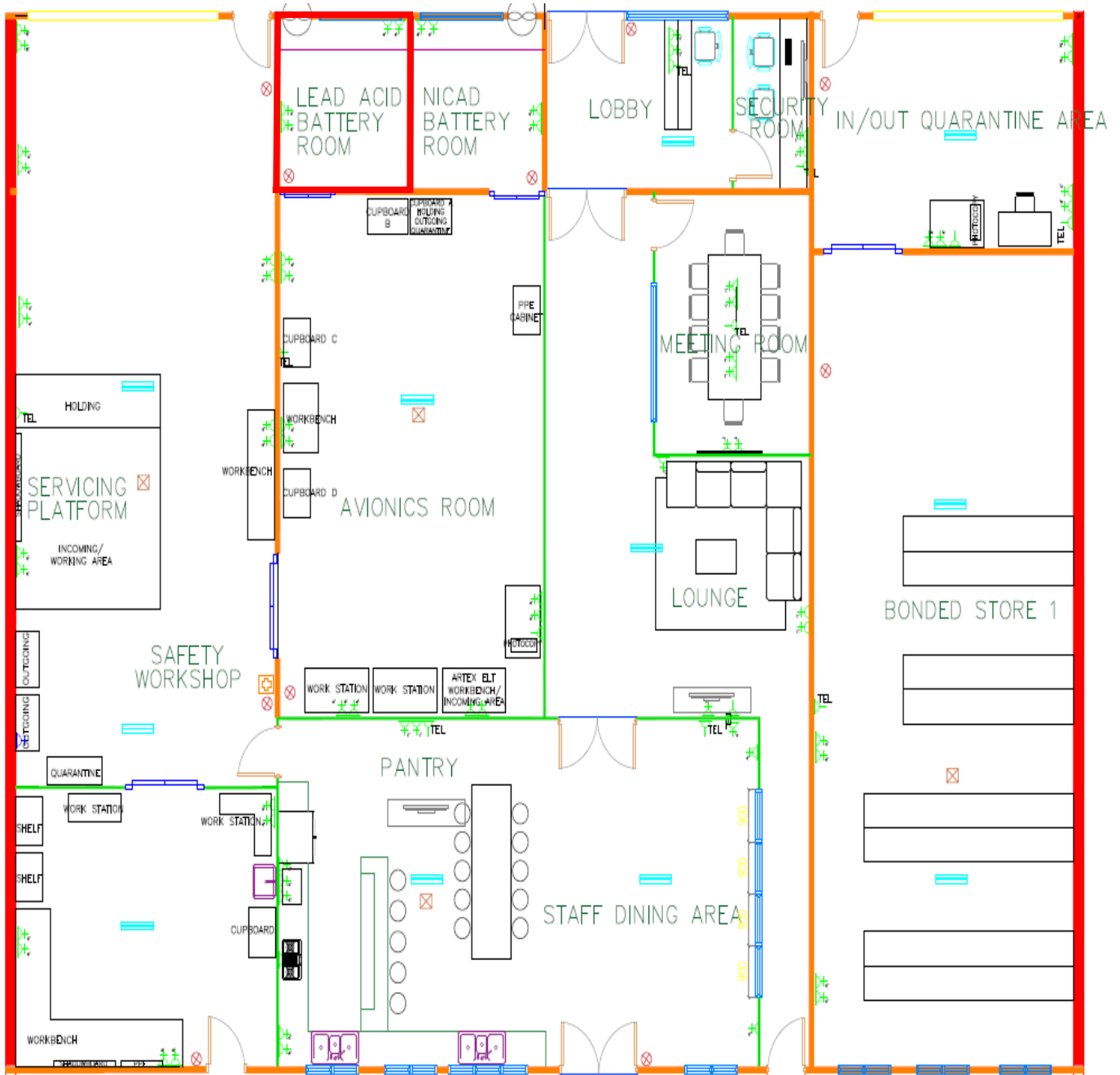
1.10.2.1 Gill Aircraft Battery Lead-Acid Series

Type of Maintenance	Requirements
Charging, Capacity Testing and Filling (Activation)	<ol style="list-style-type: none"> a. Specific Approved Facility at GAM HQ. Lead Acid Battery Room Galaxy Aerospace (M) Sdn Bhd. Suite 11-14, Helicopter Centre, Malaysia International Aerospace Centre, Sultan Abdul Aziz Shah Airport, 47200 Subang, Selangor, Malaysia. b. Any CAAM AMO maintenance facility that can comply to the minimum facility requirement in para. 1.10.1.1, 1.10.2 (c) and approved by CAAM

DOCUMENT REFERENCE:	GAM/WCP/PART 2.1.10	DATE:	03/02/2021
AMENDMENT:	INITIAL	PAGE:	Part 1.10 1 of 3

WORKSHOP CAPABILITY PROCEDURE

1.10.3 Approved Facility – Lead Acid Battery Room, GAM HQ



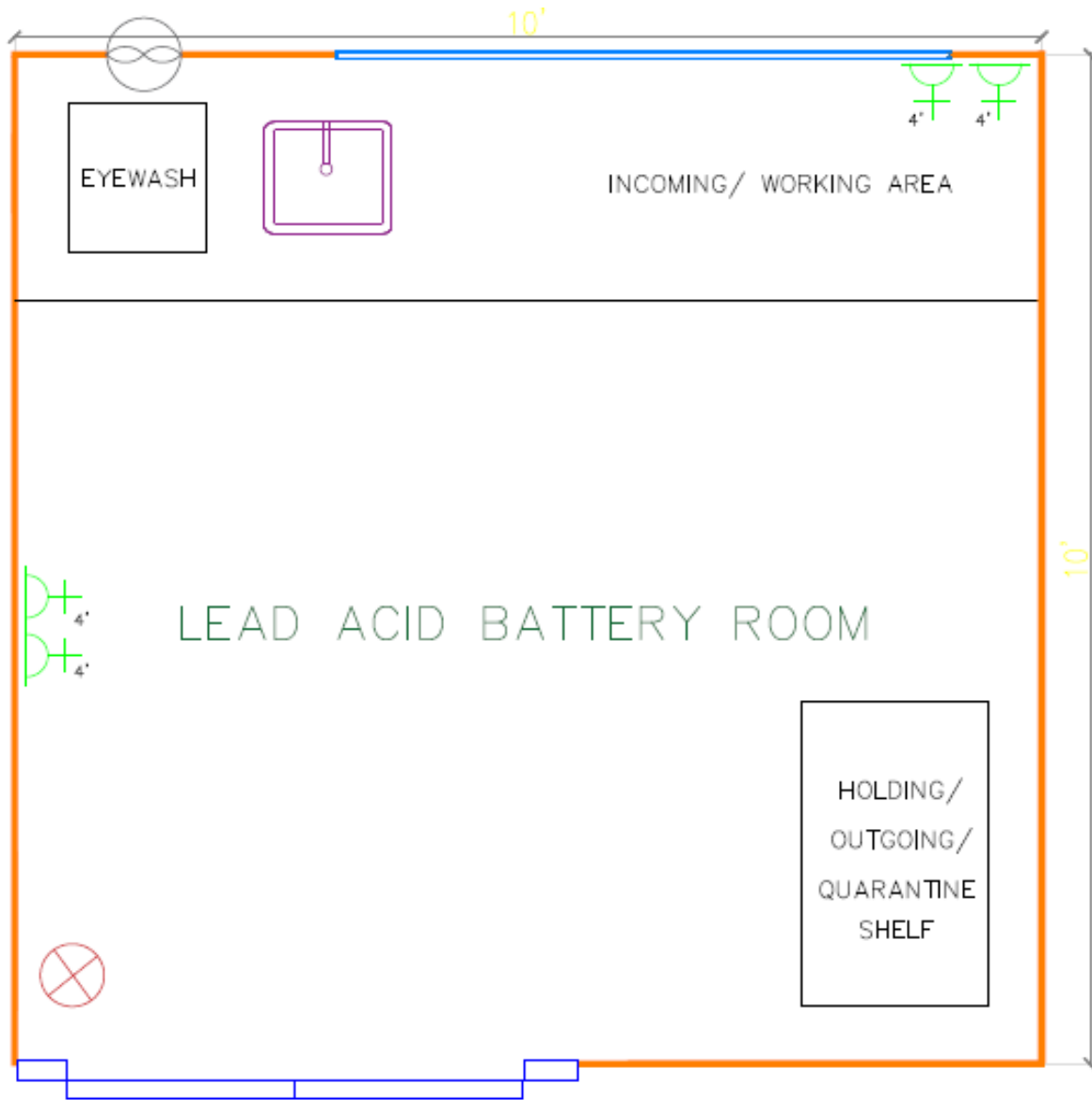
REFERENCE

-  Fire Extinguisher
-  Emergency Light
-  Smoke Detector
-  Shutter
-  Sliding door
-  Window
-  First Aid Kit
-  Sink
-  Ventilation Fan

DOCUMENT REFERENCE:	GAM/WCP/PART 2.1.10	DATE:	03/02/2021
AMENDMENT:	INITIAL	PAGE:	Part 1.10 2 of 3

WORKSHOP CAPABILITY PROCEDURE

1.10.3.1 Approved Facility – Lead Acid Battery Room, GAM HQ



REFERENCE

- Fire Extinguisher
- Emergency Light
- Smoke Detector
- Shutter
- Sliding door
- Window
- First Aid Kit
- Sink
- Ventilation Fan

DOCUMENT REFERENCE:	GAM/WCP/PART 2.1.10	DATE:	03/02/2021
AMENDMENT:	INITIAL	PAGE:	Part 1.10 3 of 3

WORKSHOP CAPABILITY PROCEDURE

PART 1.11 CERTIFYING PERSONNEL

1.11.1 Requirement for Certifying Personnel (WMP Part 1.7.5)

- a. For aircraft requirement is a B2 Company Approval Holder on type.
- b. For a Company Approval Holder on Category C; Component C5 on Gill Aircraft Battery Lead-Acid Series.

1.11.2 Minimum Qualification for Company Approval

- a. As laid down in MOE Part 3.4.

1.11.3 Assessment on Certifying Personnel

- a. Certifying Personnel are subjected to Technical Competency Assessment i.a.w MOE Part 3.4.

1.11.4 List of Company Approval Holders

- a. List of Current Approval Holders of Component C5 on Gill Battery are listed as table below.

Scope Group	Approval Holders
a.I	B2 Category Approval Holder on type Approval Holder as listed in GAM/Q-001 (List of Approval Holder) of the latest revision.
a.II	B2 and W1 Category Approval Holder as listed in GAM/Q-001 (List of Approval Holder) of the latest revision.

DOCUMENT REFERENCE:	GAM/WCP/PART 2.1.10	DATE:	03/02/2021
AMENDMENT:	INITIAL	PAGE:	Part 1.11 1 of 1

WORKSHOP CAPABILITY PROCEDURE

PART 1.12 TRAINING REQUIREMENT

1.12.1 Requirement of Training for Certifying Personnel

- a. No specific training is required by Gill for Certifying Personnel to perform the maintenance.
- b. Certifying Personnel shall need to comply with the minimum training requirement as required by MOE Part 3.4.

DOCUMENT REFERENCE:	GAM/WCP/PART 2.1.10	DATE:	03/02/2021
AMENDMENT:	INITIAL	PAGE:	Part 1.12 1 of 1

WORKSHOP CAPABILITY PROCEDURE

PART 1.13 SAMPLE WORKSHEET

1. **Gill Teledyne Battery Products Dry-Charged Lead-Acid Aircraft Battery Workshop Worksheet. (Q01-1120)**
Refer attachment I

2. **Gill Teledyne Battery Products Component Maintenance Manual 7000 Series LT Valve-Regulated Lead-Acid Batteries Workshop Worksheet. (Q01-1101)**
Refer attachment II

3. **Gill Teledyne Battery Products Component Maintenance Manual LT Valve-Regulated Lead-Acid Batteries Workshop Worksheet. (Q01-2001)**
Refer attachment III

4. **Gill Teledyne Battery Products Component Maintenance Manual LT Valve-Regulated Lead-Acid Batteries Workshop Worksheet. (Q01-4000)**
Refer attachment IV

DOCUMENT REFERENCE:	GAM/WCP/PART 2.1.10	DATE:	19/07/2021
AMENDMENT:	01	PAGE:	Part 1.13 1 of 5

WORKSHOP CAPABILITY PROCEDURE

ATTACHMENT I

DOCUMENT REFERENCE:	GAM/WCP/PART 2.1.10	DATE:	19/07/2021
AMENDMENT:	01	PAGE:	Part 1.13 2 of 5

WORKSHOP CAPABILITY PROCEDURE

ATTACHMENT II

DOCUMENT REFERENCE:	GAM/WCP/PART 2.1.10	DATE:	19/07/2021
AMENDMENT:	01	PAGE:	Part 1.13 3 of 5

WORKSHOP CAPABILITY PROCEDURE

ATTACHMENT III

DOCUMENT REFERENCE:	GAM/WCP/PART 2.1.10	DATE:	19/07/2021
AMENDMENT:	01	PAGE:	Part 1.13 4 of 5

WORKSHOP CAPABILITY PROCEDURE

ATTACHMENT IV

DOCUMENT REFERENCE:	GAM/WCP/PART 2.1.10	DATE:	19/07/2021
AMENDMENT:	01	PAGE:	Part 1.13 5 of 5

**WORKSHOP CAPABILITY PROCEDURE
FOR
KANNAD ELT SERIES**

GAM/WCP/PART 2.1.11

AMENDMENT - 02

OWNER:

GALAXY AEROSPACE SDN. BHD

CAAM AMO/2016/02

DOCUMENT REFERENCE:	GAM/WCP/PART 2.1.11	DATE:	21/10/2021
AMENDMENT:	02	PAGE:	Part 1.1 1 of 1

WORKSHOP CAPABILITY PROCEDURE

PART 1.2 AMENDMENT RECORD

Each amendment of this document will be accompanied by a letter of transmittal showing the pages to be removed and those to be inserted. All pages will show the date of issue which can be cross checked with the list of effective pages to ensure it's current.

Date of Amendment	Amdt. No.	Details of Amendment
12/10/2020	Initial	Initial issue of GAM/WCP/PART 2.1.11
19/07/2021	01	Changes from DCAM to CAAM and AN29A to CAD 8708. Part 1.11.4 Scope Group a.II - Category C6 change to W2.
21/10/2021	02	Part 1.5.2: and Part 1.8.1: – New document reference for Kannad ELT/Dongle Programming Training.

DOCUMENT REFERENCE:	GAM/WCP/PART 2.1.11	DATE:	21/10/2021
AMENDMENT:	02	PAGE:	Part 1.2 1 of 1

WORKSHOP CAPABILITY PROCEDURE

PART 1.4 TABLE OF CONTENT

1.1	Title Page
1.2	Amendment Record
1.3	List of Effective Pages
1.4	Table of Contents
1.5	Introduction
1.6	Register of Issued MOC
1.7	Description, Scope of Capability and
1.8	List of Approved Maintenance Data
1.9	List of Equipment and Tool Requirement
1.10	Approved Facility
1.11	Certifying Personnel
1.12	Training Requirement
1.13	Sample of Workshop Worksheet

DOCUMENT REFERENCE:	GAM/WCP/PART 2.1.11	DATE:	12/10/2020
AMENDMENT:	INITIAL	PAGE:	Part 1.4 1 of 1

WORKSHOP CAPABILITY PROCEDURE

PART 1.5 INTRODUCTION

1.5.1 Introduction

- a. This Workshop Capability Procedure is to address how GAM manages its' Kannad Emergency Locator Transmitter (ELT) servicing workshop capabilities and activities and supporting MOE 2.9 Repair Procedure and Workshop Procedures Manual.
- b. GAM can now offer its expertise and MRO services to all carriers operating with Kannad Emergency Locator Transmitter (ELT). The offer includes battery replacement, ELT and Dongle re-programming.
- c. This Workshop Capability Procedure covers GAM Capability, processes and certification within GAM Workshop Approval/System.

1.5.2 Reference

- a. MCAR 2016.
- b. CAAM Civil Aviation Directives CAD 8708.
- c. GAM Maintenance Organisation Exposition GAM/MOE.
- d. GAM Workshop Procedure Manual GAM/WMP.
- e. Kannad Emergency Locator Transmitter (ELT, Standard) Level 2 Component Maintenance Manual with Illustrated Parts List 25-63-05 of the latest revision.
- f. Kannad Emergency Locator Transmitter (ELT, Compact Family) Level 2 Component Maintenance Manual with Illustrated Parts List 25-63-07 of the latest revision.
- g. Kannad Emergency Locator Transmitter (ELT, Integra Family) Level 2 Component Maintenance Manual with Illustrated Parts List 25-63-08 of the latest revision.
- h. [Kannad ELT Programming Training, Document No DOC21053 of the latest revision.](#)

DOCUMENT REFERENCE:	GAM/WCP/PART 2.1.11	DATE:	21/10/2021
AMENDMENT:	02	PAGE:	Part 1.5 1 of 1

WORKSHOP CAPABILITY PROCEDURE

PART 1.6

REGISTER OF ISSUED MOC

Item	MOC Number	Significant Y/N	Rev. no.	Dated
01	GAM/MOC/20/0049	Y	Initial	12/10/2020
02	GAM/MOC/21/0031	Y	01	19/07/2021
03	GAM/MOC/21/0071	Y	02	21/10/2021

DOCUMENT REFERENCE:	GAM/WCP/PART 2.1.11	DATE:	21/10/2021
AMENDMENT:	02	PAGE:	Part 1.6 1 of 1

WORKSHOP CAPABILITY PROCEDURE

PART 1.7 DESCRIPTION, SCOPE AND MODEL OF COMPONENT UNDER WORKSHOP CAPABILITY

1.7.1 Description

- a. This section details the GAM capability to perform servicing to the Kannad Emergency Locator Transmitter (ELT)

1.7.2 Scope of Capability

- a. Service for workshop capability to be carried out by GAM for Kannad Emergency Locator Transmitter (ELT) are as per follows:
- i. Programming of ELT and Programming Dongle.
 - ii. ELT Battery Replacement.
 - iii. Component Repair / Replacement Limitation up to Level 2.
- b. Repair beyond of Level 2 for failures found during visual inspection, self-test, programming or battery replacement, the ELT must be repaired by the manufacturer or by an approved repair center (list on <https://www.orolia.com/support/kannad>).

1.7.3 Model of Component under Workshop Capability

Model	Variant	Name	Part Number
Standard ELT's (Battery Replacement)	A	KANNAD 406 AP	S1820502-01
	B	KANNAD 406 AP	S1820502-02
	C	KANNAD 406 AF	S1821502-01
	D	KANNAD 406 AF	S1821502-02
	E	KANNAD 406 AF-H	S1822502-01
	F	KANNAD 406 AF-H	S1822502-02
	G	KANNAD 406 AS	S1823502-01
	H	KANNAD 406 AS	S1823502-02
	J	KANNAD 406 AS-TNC	S1823502-03
	K	KANNAD 121 AF	S1824502-01
	L	KANNAD 121 AF	S1824502-02
	M	KANNAD 121 AF-H	S1826502-02
	N	KANNAD 406 AF (6D)	S1821502-06
	P	KANNAD 406 SURVIVAL	S1823502-05
Q	KANNAD 406 AP-H	S1820502-04	
Compact Family ELT's (Battery Replacement)	A	KANNAD 406 AF-COMPACT	S1840501-01
	B	KANNAD 406 AF-COMPACT (ER)	S1840501-04

DOCUMENT REFERENCE:	GAM/WCP/PART 2.1.11	DATE:	12/10/2020
AMENDMENT:	INITIAL	PAGE:	Part 1.7 1 of 2

WORKSHOP CAPABILITY PROCEDURE

Model	Variant	Name	Part Number
Integra Family ELT's (Battery Replacement)	A	AP INTEGRA (ER)	S1850501-01
	B	AP INTEGRA	S1850501-02
	C	AF INTEGRA (ER)	S1851501-01
	D	AF INTEGRA	S1851501-02
	E	AF-H INTEGRA (ER)	S1852501-01
	F	AF-H INTEGRA	S1852501-02
	G	AP-H INTEGRA (ER)	S1854501-01
	H	AP-H INTEGRA	S1854501-02
	J	AP INTEGRA (ER-N)	S1850501-03
	K	AF INTEGRA (ER-N)	S1851501-03
	L	AF-H INTEGRA (ER-N)	S1852501-03
	M	AP-H INTEGRA (ER-N)	S1854501-03
Standard ELT's Compact Family ELT's Integra Family ELT's Programming Dongle (Programming)	-	Standard ELT's	As per listed above
	-	Compact ELT's	As per listed above
	-	Integra ELT's	As per listed above
	-	Programming Dongle	S1820514-01
	-	Programming Dongle, A320	S1820514-04
	-	Programming Dongle, A330 & A340	S1820514-05
	-	Programming Dongle Assembly	S1820514-06
	-	Programming Dongle Integra Long Range (A330-A340-A380)	S1820514-07
	-	Programming Dongle Integra/SA (A318-A319-A320-A321-A320 NEO Family)	S1820514-11
	-	Attachable Programming Dongle	S1820514-12

DOCUMENT REFERENCE:	GAM/WCP/PART 2.1.11	DATE:	12/10/2020
AMENDMENT:	INITIAL	PAGE:	Part 1.7 2 of 2

WORKSHOP CAPABILITY PROCEDURE

PART 1.8 LIST OF APPROVED MAINTENANCE DATA

1.8.1 Minimum Requirement of Approved Manuals

Model	Manuals
Standard ELT's	Kannad Emergency Locator Transmitter (ELT, Kannad) Level 2 Component Maintenance Manual with Illustrated Parts List 25-63-05 of the latest revision.
Compact Family ELT's	Kannad Emergency Locator Transmitter (ELT, Compact Family) Level 2 Component Maintenance Manual with Illustrated Parts List 25-63-07 of the latest revision.
Integra Family ELT's	Kannad Emergency Locator Transmitter (ELT, Integra Family) Level 2 Component Maintenance Manual with Illustrated Parts List 25-63-08 of the latest revision.
Programming all ELT and Programming Dongle	Kannad ELT Programming Training, Document No DOC21053 of the latest revision.

Note: Service Letters / Service Bulletins are available for download on <https://www.rolia.com/support/kannad>

DOCUMENT REFERENCE:	GAM/WCP/PART 2.1.11	DATE:	21/10/2021
AMENDMENT:	02	PAGE:	Part 1.8 1 of 1

WORKSHOP CAPABILITY PROCEDURE

PART 1.9 EQUIPMENT AND TOOL REQUIREMENT

1.9.1 List of Equipment and Tool Requirement

DESIGNATION	CHARACTERISTIC	USAGE	
		PROGRAMMING	BATTERY REPLACEMENT
Programming Equipment for KANNAD ELTs	PR600	X	X
COSPAS-SARSAT 121.5Mhz and 406Mhz Decoder	Beacon Tester BT200	X	X
Laptop OR PC with minimum of Windows XP minimum and Internet connection.	Commercially available	X	X
Label Maker	Commercially available	X	X
Digital Multimeter (Capable to measure Voltage and Milliampere)	Commercially available		X
Torque Screwdriver	Commercially available		X
Standard Mechanic's Tools	Commercially available		X

DOCUMENT REFERENCE:	GAM/WCP/PART 2.1.11	DATE:	12/10/2020
AMENDMENT:	INITIAL	PAGE:	Part 1.9 1 of 1

WORKSHOP CAPABILITY PROCEDURE

PART 1.10 APPROVED FACILITY

1.10.1 Minimum Requirement of Facility

1.10.1.1 ARTEX ELT

ARTEX ELT	
Type of Maintenance	Requirements
Battery Replacement and Programming	No special requirements except for the environment should be at the temperature of between 15°C and 35°C.

1.10.2 Approved Facility for the Maintenance

- a. Avionics Workshop consists of Avionics Room, Lead Acid Battery Room and Ni-Cad Battery Room. GAM has identified Avionics Room under Avionics Workshop at the Galaxy Aerospace (M) Sdn Bhd headquarters (GAM HQ) as the Specific Approved Facility for all maintenance activities of Kannad Emergency Locator Transmitter (ELT).
- b. Avionics Room is equipped with sufficient lighting, air conditioned, workbench, workstation and a laptop computer, internet connection, fire extinguisher, fire escape plan, ESDS workstation, INCOMING, HOLDING, OUTGOING and QUARANTINE area, equipment storage cabinet and racks for manuals.
- c. As there are no special requirements called for by the OEM except for minor requirements on testing and assembly types of maintenance, it has been decided that any maintenance facility that can meet with the requirements are considered suitable for carrying out the maintenance work on the ELTs.
- d. List of approved maintenance facilities for the purpose of this capability are tabled below:

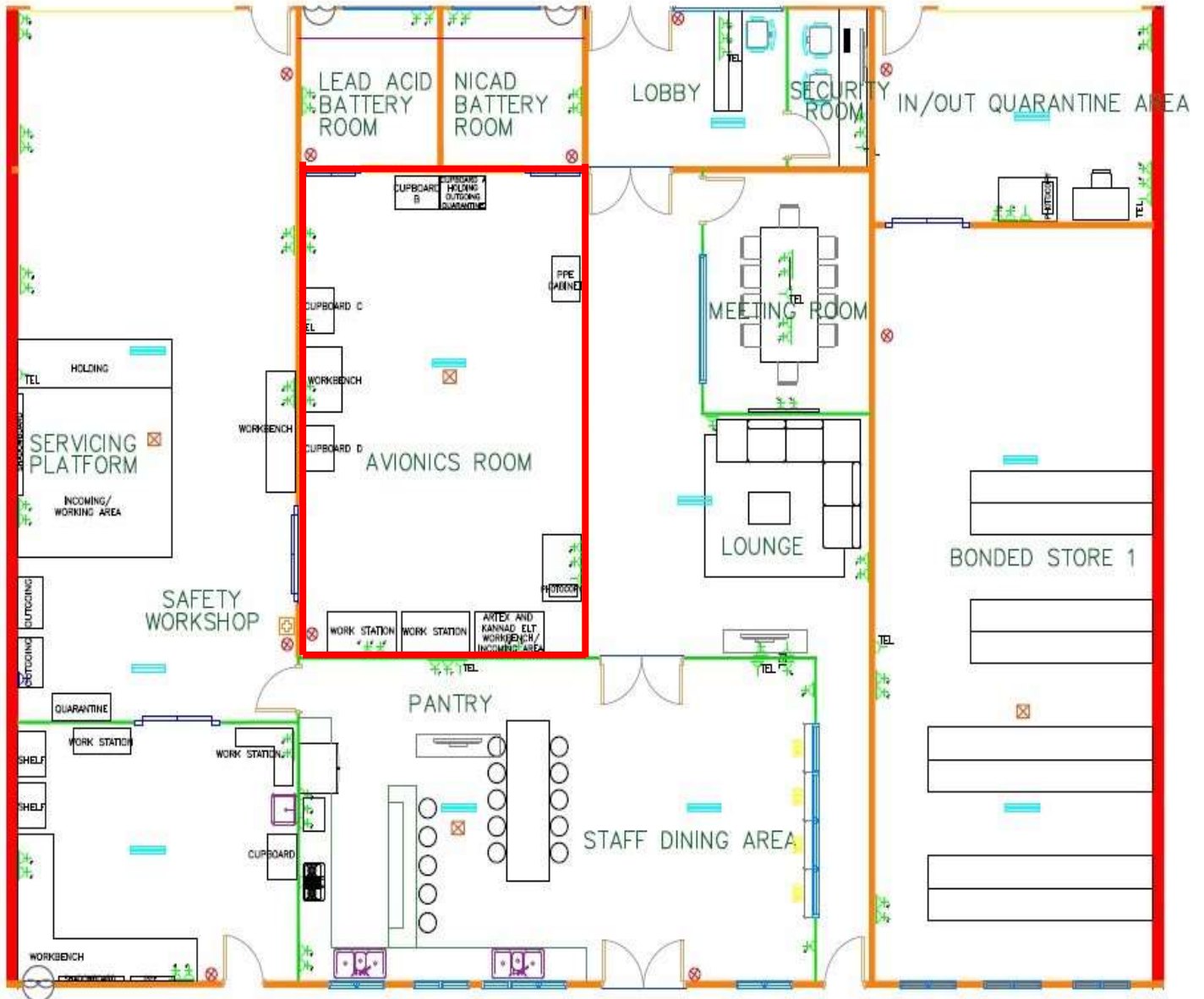
1.10.2.1 ARTEX ELT All Series and Programming Adapter

Type of Maintenance	Requirements
Battery Replacement and Programming	<ol style="list-style-type: none"> a. Specific Approved Facility at GAM HQ. Avionics Room Galaxy Aerospace (M) Sdn Bhd. Suite 11-14, Helicopter Centre, Malaysia International Aerospace Centre, Sultan Abdul Aziz Shah Airport, 47200 Subang, Selangor, Malaysia. b. Any CAAM AMO maintenance facility that can comply to the minimum facility requirement in para. 1.10.1.1, 1.10.2 (c) and approved by CAAM

DOCUMENT REFERENCE:	GAM/WCP/PART 2.1.11	DATE:	12/10/2020
AMENDMENT:	INITIAL	PAGE:	Part 1.10 1 of 3

WORKSHOP CAPABILITY PROCEDURE

1.10.3 Approved Facility – Kannad ELT Workshop (Avionics Room), GAM HQ



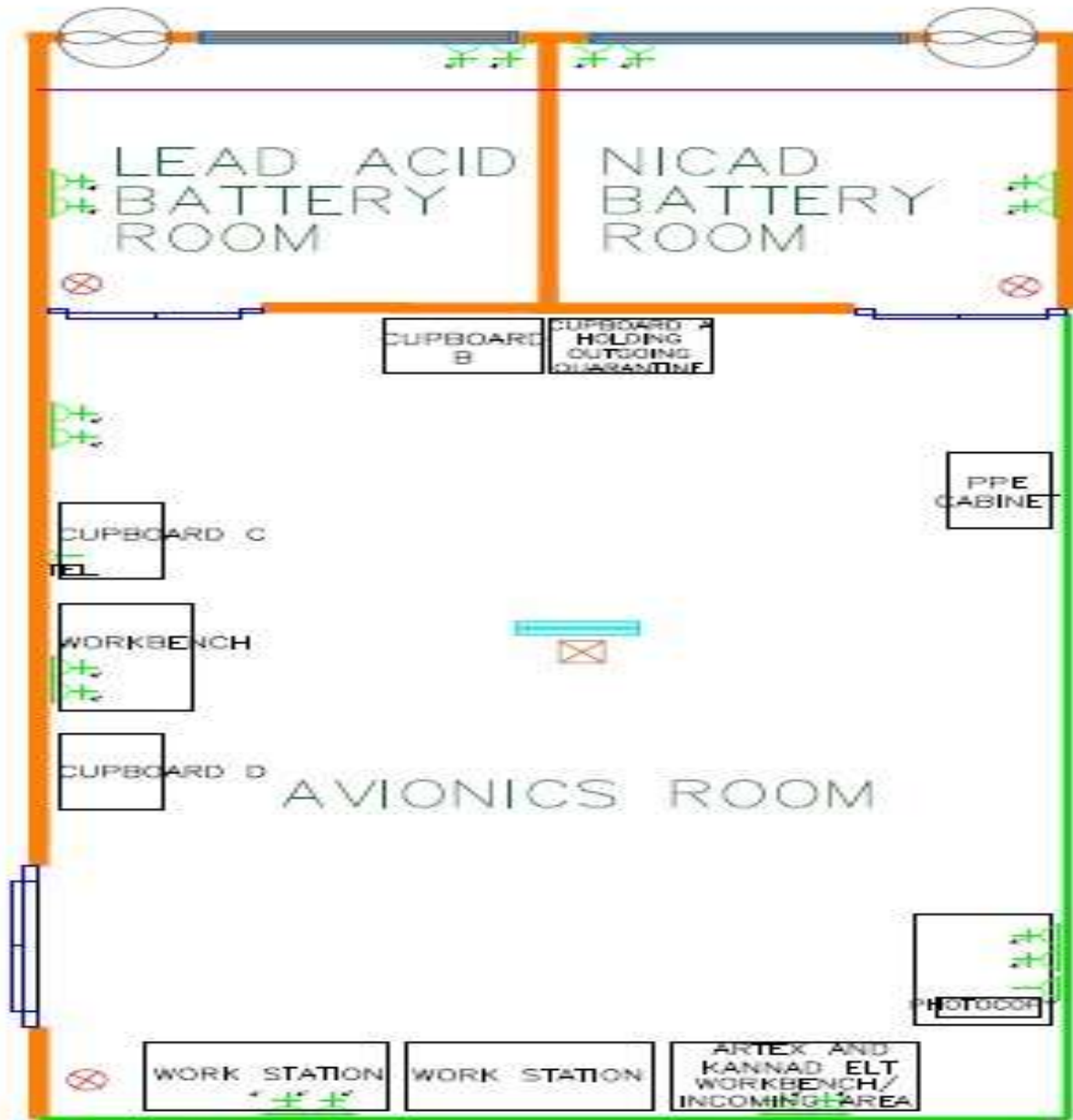
REFERENCE

-  Fire Extinguisher
-  Emergency Light
-  Smoke Detector
-  Shutter
-  Sliding door
-  Window
-  First Aid Kit
-  Sink
-  Ventilation Fan

DOCUMENT REFERENCE:	GAM/WCP/PART 2.1.11	DATE:	12/10/2020
AMENDMENT:	INITIAL	PAGE:	Part 1.10 2 of 3

WORKSHOP CAPABILITY PROCEDURE

1.10.3.1 Approved Facility – Kannad ELT Workshop (Avionics Room), GAM HQ



REFERENCE

-  Fire Extinguisher
-  Emergency Light
-  Smoke Detector
-  Shutter
-  Sliding door
-  Window
-  First Aid Kit
-  Sink
-  Ventilation Fan

DOCUMENT REFERENCE:	GAM/WCP/PART 2.1.11	DATE:	12/10/2020
AMENDMENT:	INITIAL	PAGE:	Part 1.10 3 of 3

WORKSHOP CAPABILITY PROCEDURE

PART 1.11 CERTIFYING PERSONNEL

1.11.1 Requirement for Certifying Personnel (WMP Part 1.7.5)

- a. For aircraft requirement is a B2 Company Approval Holder on type.
- b. For a Company Approval Holder on Category C; Component C6 on Kannad ELT's and Programming Dongle.

1.11.2 Minimum Qualification for Company Approval

- a. As laid down in MOE Part 3.4.

1.11.3 Assessment on Certifying Personnel

- a. Certifying Personnel are subjected to Technical Competency Assessment i.a.w MOE Part 3.4.

1.11.4 List of Company Approval Holders

- a. List of Current Approval Holders of Component C6 on Kannad ELT's and Programming Dongle are listed in as per table below.

Scope Group	Approval Holders
a.I	B2 Category Approval Holder on type Approval Holder as listed in GAM/Q-001 (List of Approval Holder) of the latest revision.
a.II	B2 and W2 Category Approval Holder as listed in GAM/Q-001 (List of Approval Holder) of the latest revision.

DOCUMENT REFERENCE:	GAM/WCP/PART 2.1.11	DATE:	19/07/2021
AMENDMENT:	01	PAGE:	Part 1.11 1 of 1

WORKSHOP CAPABILITY PROCEDURE

PART 1.12 TRAINING REQUIREMENT

1.12.1 Requirement of Training for Certifying Personnel

- a. Specific training is not required by Kannad for Certifying Personnel to perform the maintenance.
- b. Certifying Personnel shall need to comply with the minimum training requirement as required by MOE Part 3.4.

DOCUMENT REFERENCE:	GAM/WCP/PART 2.1.11	DATE:	12/10/2020
AMENDMENT:	INITIAL	PAGE:	Part 1.12 1 of 1

WORKSHOP CAPABILITY PROCEDURE

PART 1.13 SAMPLE WORKSHEET

- 1. KANNAD ELT and Dongle Programming**
Refer attachment I

- 2. KANNAD Standard ELT's Battery Replacement**
Refer attachment II

- 3. KANNAD Compact Family ELT's Battery Replacement**
Refer attachment III

- 4. KANNAD Integra Family ELT's Battery Replacement**
Refer attachment IV

DOCUMENT REFERENCE:	GAM/WCP/PART 2.1.11	DATE:	12/10/2020
AMENDMENT:	INITIAL	PAGE:	Part 1.13 1 of 5

WORKSHOP CAPABILITY PROCEDURE

ATTACHMENT I

DOCUMENT REFERENCE:	GAM/WCP/PART 2.1.11	DATE:	12/10/2020
AMENDMENT:	INITIAL	PAGE:	Part 1.13 2 of 5

WORKSHOP CAPABILITY PROCEDURE

ATTACHMENT II

DOCUMENT REFERENCE:	GAM/WCP/PART 2.1.11	DATE:	12/10/2020
AMENDMENT:	INITIAL	PAGE:	Part 1.13 3 of 5

WORKSHOP CAPABILITY PROCEDURE

ATTACHMENT III

DOCUMENT REFERENCE:	GAM/WCP/PART 2.1.11	DATE:	12/10/2020
AMENDMENT:	INITIAL	PAGE:	Part 1.13 4 of 5

WORKSHOP CAPABILITY PROCEDURE

ATTACHMENT IV

DOCUMENT REFERENCE:	GAM/WCP/PART 2.1.11	DATE:	12/10/2020
AMENDMENT:	INITIAL	PAGE:	Part 1.13 5 of 5

**WORKSHOP CAPABILITY PROCEDURE
FOR
INFLATABLE LIFE RAFT
TYPE F11R VALISE
AND
TYPE F14R VALISE**

GAM/WCP/PART 2.1.12

DOCUMENT REFERENCE:	GAM/WCP/PART 2.1.12	DATE:	18 April 2022
AMENDMENT:	Initial	PAGE:	Part 1.2 1 of 1

WORKSHOP CAPABILITY PROCEDURE

PART 1.2 AMENDMENT RECORD

Each amendment of this document will be accompanied by a letter of transmittal showing the pages to be removed and those to be inserted. All pages will show the date of issue which can be cross checked with the list of effective pages to ensure it's current.

Date of Amendment	Amdt. No.	Details of Amendment
18 April 2022	Initial	Initial issue of GAM/WCP/PART 2.1.12

DOCUMENT REFERENCE:	GAM/WCP/PART 2.1.12	DATE:	18 April 2022
AMENDMENT:	Initial	PAGE:	Part 1.2 1 of 1

WORKSHOP CAPABILITY PROCEDURE

PART 1.3 LIST OF EFFECTIVE PAGES

Page Ref.	Page No.	Issue No	Amd. No.	Dated
1.1	1 of 1	1	Initial	18 April 2022
1.2	1 of 1	1	Initial	18 April 2022
1.3	1 of 1	1	Initial	18 April 2022
1.4	1 of 1	1	Initial	18 April 2022
1.5	1 of 1	1	Initial	18 April 2022
1.6	1 of 1	1	Initial	18 April 2022
1.7	1 of 1	1	Initial	18 April 2022
1.8	1 of 2	1	Initial	18 April 2022
	2 of 2	1	Initial	18 April 2022
1.9	1 of 1	1	Initial	18 April 2022
1.10	1 of 3	1	Initial	18 April 2022
	2 of 3	1	Initial	18 April 2022
	3 of 3	1	Initial	18 April 2022
1.11	1	1	Initial	18 April 2022
1.12	1	1	Initial	18 April 2022
1.13	1 of 2	1	Initial	18 April 2022
	2 of 2	1	Initial	18 April 2022

DOCUMENT REFERENCE:	GAM/WCP/PART 2.1.8	DATE:	18 April 2022
AMENDMENT:	Initial	PAGE:	Part 1.3 1 of 1

WORKSHOP CAPABILITY PROCEDURE

PART 1.4 TABLE OF CONTENT

1.1	Title Page
1.2	Amendment Record
1.3	List of Effective Pages
1.4	Table of Contents
1.5	Introduction
1.6	Register of Issued MOC
1.7	Description, Scope and Model of Component under Workshop Capability
1.8	List of Approved Maintenance Data
1.9	Equipment and Tool Requirement
1.10	Approved Facility
1.11	Certifying Personnel
1.12	Training Requirement
1.13	Sample Worksheet

DOCUMENT REFERENCE:	GAM/WCP/PART 2.1.8	DATE:	18 April 2022
AMENDMENT:	Initial	PAGE:	Part 1.4 1 of 1

WORKSHOP CAPABILITY PROCEDURE

PART 1.5 INTRODUCTION

1.5.1 Introduction

- a. This Workshop Capability Procedure is to address how GAM manages its Life raft workshop capabilities and activities and supporting MOE 2.9 Repair Procedure and Workshop Procedures Manual.
- b. GAM can now offer its expertise and MRO services to all carriers operating with Life raft to perform service of 1-year inspection task on Life raft system.
- c. This Workshop Capability Procedure covers GAM Capability, processes and certification within GAM Workshop Approval/System.

1.5.2 Reference

- a. Malaysia Civil Aviation Regulation MCAR 2016
- b. CAAM Civil Aviation Directives CAD 8708 CAAM Authorized Release Certificate (CAAM Form 1)
- c. CAAM Civil Aviation Directives CAD 8601 Maintenance Organisation Approval
- d. GAM Maintenance Organisation Exposition (GAM/CAAM/MOE)
- e. GAM Workshop Management Procedure GAM/WMP
- f. Interactive Electronic Technical Publication (IETP)

39-A-25-60-00-00A-028A-A Emergency - General
89-A-25-60-00-00A-028A-A Emergency - General

DOCUMENT REFERENCE:	GAM/WCP/PART 2.1.8	DATE:	18 April 2022
AMENDMENT:	Initial	PAGE:	Part 1.5 1 of 1

WORKSHOP CAPABILITY PROCEDURE

PART 1.6 REGISTER OF ISSUED MOC

Item	MOC Number	Significant Y/N	Rev. no.	Dated
01	GAM/MOC/21/0006	Y	Initial	22/01/2021
02	GAM/MOC/21/0083	Y	Initial	06/12/2021

DOCUMENT REFERENCE:	GAM/WCP/PART 2.1.8	DATE:	18 April 2022
AMENDMENT:	Initial	PAGE:	Part 1.6 1 of 1

WORKSHOP CAPABILITY PROCEDURE

PART 1.7 DESCRIPTION, SCOPE AND MODEL OF COMPONENT UNDER WORKSHOP CAPABILITY

1.7.1 Description

- a. This section details the GAM capability to perform maintenance checks and service of 1-year inspection to Life raft.

1.7.2 Scope of Capability

- a. Maintenance for workshop capability to be carried out by GAM to service Life raft are as follows:
- i. Disassembly / Reassembly
 - ii. Detailed Inspection
 - iii. Leak Check
 - iv. Repair
 - v. Inspection & Replacement
- c. Repair for failure or defect found during inspection which is out of limit or not covered within the approved manual must be repaired by the manufacturer or by an approved repair center.

1.7.3 Model of Component under Workshop Capability

Components	Model/ Series	Part Number
Life raft System	F11R Inflatable Life Raft (AW139)	3G2560V00332
		3G2560V00432
		3G2560V00431
		3G2560V00331
		3G2560V00433
		3G2560V00333
		3G2560V00434
		3G2560V00334
		3G2560V00831
		3G2560V00731
	F14R Inflatable Life Raft (AW189)	8G2560V00131
		8G2560V00231

DOCUMENT REFERENCE:	GAM/WCP/PART 2.1.8	DATE:	18 April 2022
AMENDMENT:	Initial	PAGE:	Part 1.7 1 of 1

WORKSHOP CAPABILITY PROCEDURE

PART 1.8 LIST OF APPROVED MAINTENANCE DATA

1.8.1 Minimum Requirement of Approved Manuals

Series	Manuals
F11R Inflatable Life raft	<p style="text-align: center;">INTERACTIVE ELECTRONIC TECHNICAL PUBLICATION (IETP)</p> <ul style="list-style-type: none"> - 39-A-25-62-07-00A-31AA-K Life raft container (left/right) – Detailed Inspection. - 39-A-25-62-07-00A-530A-K Life raft container (left/right) – Disassemble Procedure. - 39-A-25-62-07-00A-710A-K Life raft container (left/right) – Assemble Procedure. - 39-A-25-62-07-01A-343A-K Personal locator beacon (Life raft container) – BIT operation (crew). - 39-A-25-62-07-01A-520A-K Personal locator beacon (Life raft container) – Remove procedure. - 39-A-25-62-07-01A-720A-K Personal locator beacon (Life raft container) – Install procedure. - 39-A-25-62-07-01A-75AA-K Personal locator beacon (Life raft container) – Re-programming procedure. - 39-A-25-62-07-01A-921A-K Personal locator beacon (Life raft container) – Battery box (life raft container) – Replacement (remove and install a new item). - 39-A-25-62-07-02A-31AA-K Life raft container (left/right) – Detailed Inspection. - 39-A-25-62-07-02A-364A-K Life raft container (left/right) – Leak Check. - 39-A-25-62-07-02A-91LA-K Life raft container (left/right) – Unfold/fold procedures. - 39-A-25-62-07-03A-921A-K Pressure gauge window (Life raft container) – Replacement (remove and install new item) - 39-A-25-62-07-04A-251A-K Osmosis pump (Life raft container) – Clean with chemical agent.

DOCUMENT REFERENCE:	GAM/WCP/PART 2.1.8	DATE:	18 April 2022
AMENDMENT:	Initial	PAGE:	Part 1.8 1 of 2

WORKSHOP CAPABILITY PROCEDURE

Series	Manuals
F14R Inflatable Life raft	<p style="text-align: center;">INTERACTIVE ELECTRONIC TECHNICAL PUBLICATION (IETP)</p> <ul style="list-style-type: none"> - 89-A-25-63-09-01A-530A-B Life raft container (left/right) – Disassemble Procedure. - 89-A-25-63-09-01A-710A-B Life raft container (left/right) – Assemble Procedure. - 89-A-25-63-09-01A-100D-B Life raft container (left/right) – Unfold/fold Procedure - 89-A-25-63-09-01A-31AA-B Life raft container (left/right) – Function Test - 89-A-25-63-10-00A-343A-B Personal locator beacon (Life raft container) – BIT operation (crew). - 89-A-25-63-10-00A-520A-B Personal locator beacon (Life raft container) – Remove procedure. - 89-A-25-63-09-01A-720A-B Personal locator beacon (Life raft container) – Install procedure. - 89-A-25-63-09-01A-75AA-B Personal locator beacon (Life raft container) – Re-programming procedure. - 89-A-25-63-09-01A-921A-B Personal locator beacon (Life raft container) – Battery box (life raft container) – Replacement (remove and install a new item).

DOCUMENT REFERENCE:	GAM/WCP/PART 2.1.8	DATE:	18 April 2022
AMENDMENT:	Initial	PAGE:	Part 1.8 2 of 2

WORKSHOP CAPABILITY PROCEDURE

PART 1.9 EQUIPMENT AND TOOL REQUIREMENT

1.9.1 List of Equipment and Tool Requirement

Description	P/N	GAM I/D
Belt Welder	304355A	ST053
Welding Tester	304356A	ST052
Hose with adapter	304691A	ST068
Raft adapter	-	ST220F
Plastic scraper	-	ST251
Spatula (Wooden)	-	ST391F
Vacuum device	-	ST054
Digital Manometer	-	CTE48
Safety Pin (SEI)	11046009	ST392F
Beacon, Dummy	303965A	ST757F
Magnifying 10x	-	G2323
Raft Repacking kit	304696A	ST393F
Cap, recoil	11044009	ST394F,ST395F
Plug, protection	AGS595C	ST396F,ST397F
Round needle for raft stitching		ST398F
Sleeker		ST400F
Ratchet strap		ST401F,ST402F,ST403F,ST404F

DOCUMENT REFERENCE:	GAM/WCP/PART 2.1.8	DATE:	18 April 2022
AMENDMENT:	Initial	PAGE:	Part 1.9 1 of 1

WORKSHOP CAPABILITY PROCEDURE

PART 1.10 APPROVED FACILITY

1.10.1 Minimum Requirement of Facility

1.10.1.1 Safety Equipment Workshop

Life raft	
Type of Maintenance	Requirements
Fold/Unfold, Detailed Inspection, Leak Check, Repair, Inspection & Replacement	No special requirements except for the: - <ol style="list-style-type: none"> 1. Environment should be at the temperature of between 15°C and 35°C. 2. Worktable should be clean and free from dust, sharp object, fluids or other unwanted materials (e.g. solvents or greases) on the worktable. 3. Worktable must be of sufficient dimensions. The table flat must be smooth and it has no sharp objects that can cause damage to the Life raft.

1.10.2 Approved Facility for the Maintenance

- a. GAM has identified Safety Equipment Workshop at the Galaxy Aerospace (M) Sdn Bhd Operation Centre (OC) for all maintenance activities in the respective workshop.
- b. Safety Equipment Workshop is equipped with sufficient lighting, air conditioned, workbench, workstation and a desktop computer, internet connection, fire extinguisher, fire escape plan, INCOMING, HOLDING, OUTGOING and QUARANTINE area, equipment storage cabinet and racks.
- c. As there are no special requirements called for by the OEM except for minor requirements on inspection and leak check types of maintenance, it has been decided that any maintenance facility that can meet with the two requirements are considered suitable for carrying out the maintenance work on the life raft.
- d. List of approved maintenance facilities for the purpose of this capability are tabled below:

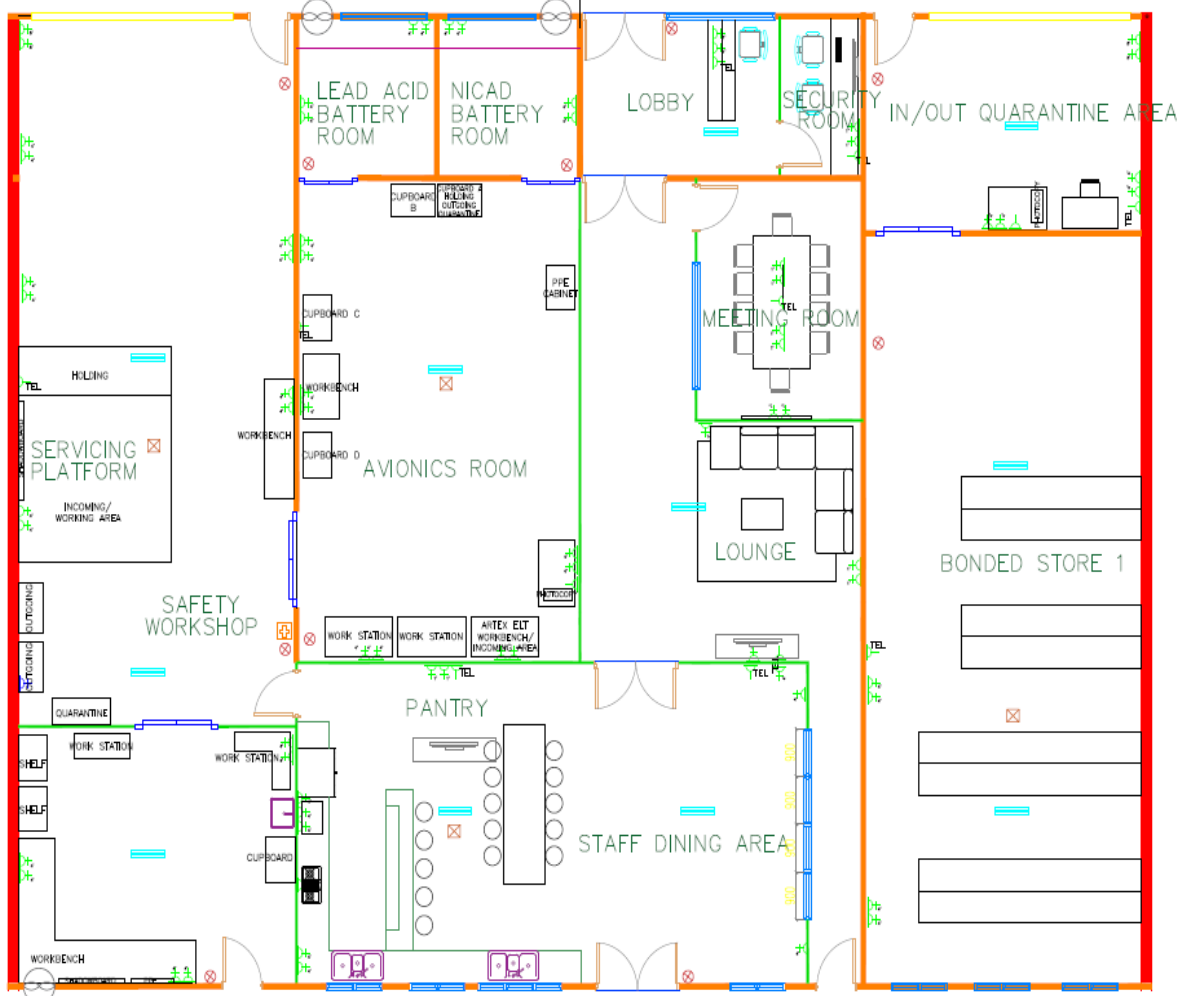
1.10.2.1 Life raft

Type of Maintenance	Requirements
Fold/Unfold, Detailed Inspection, Leak Check, Repair, Inspection & Replacement	<ol style="list-style-type: none"> a. Specific Approved Facility at GAM HQ. Safety Equipment Workshop Galaxy Aerospace (M) Sdn Bhd. Suite 11-14, Helicopter Centre, Malaysia International Aerospace Centre, Sultan Abdul Aziz Shah Airport, 47200 Subang, Selangor, Malaysia. b. Any CAAM AMO maintenance facility that can comply to the minimum facility requirement in para. 1.10.1.1 and approved by CAAM

DOCUMENT REFERENCE:	GAM/WCP/PART 2.1.8	DATE:	18 April 2022
AMENDMENT:	Initial	PAGE:	Part 1.10 1 of 3

WORKSHOP CAPABILITY PROCEDURE

1.10.2 Approved Facility – Safety Equipment Workshop, GAM Operation Centre (OC)



corridor

REFERENCE

-  Fire Extinguisher
-  Emergency Light
-  Smoke Detector
-  Shutter
-  Sliding door
-  Window
-  First Aid Kit
-  Sink
-  Ventilation Fan

DOCUMENT REFERENCE:	GAM/WCP/PART 2.1.8	DATE:	18 April 2022
AMENDMENT:	Initial	PAGE:	Part 1.10 2 of 3

WORKSHOP CAPABILITY PROCEDURE



REFERENCE

- ⊗
Fire Extinguisher
- ☰
Emergency Light
- ⊠
Smoke Detector
- Shutter
- Sliding door
- ⊕
First Aid kit
- Sink
- ⊕
Ventilation Fan

DOCUMENT REFERENCE:	GAM/WCP/PART 2.1.8	DATE:	18 April 2022
AMENDMENT:	Initial	PAGE:	Part 1.10 3 of 3

WORKSHOP CAPABILITY PROCEDURE

PART 1.11 CERTIFYING PERSONNEL

1.11.1 Requirement for Certifying Personnel (WMP Part 1.7.5)

- a. For aircraft requirement is a B1 Company Approval Holder on type.
- b. For a Company Approval Holder on Category W; Component C6 on Life raft.

1.11.2 Minimum Qualification for Company Approval

- a. As laid down in MOE Part 3.4.

1.11.3 Assessment on Certifying Personnel

- a. Certifying Personnel are subjected to Technical Competency Assessment i.a.w MOE Part 3.4.

1.11.4 List of Company Approval Holders

- a. List of Current Approval Holders of Component C6 on Life raft are listed in are table as below.

Scope Group	Approval Holders
a.I	B1 Category Approval Holder on type Approval Holder as listed in GAM/Q-001 (List of Approval Holder) of the latest revision.
a.II	W2 Category Approval Holder as listed in GAM/Q-001 (List of Approval Holder) of the latest revision.

DOCUMENT REFERENCE:	GAM/WCP/PART 2.1.8	DATE:	18 April 2022
AMENDMENT:	Initial	PAGE:	Part 1.11 1 of 1

WORKSHOP CAPABILITY PROCEDURE

PART 1.12 TRAINING REQUIREMENT

1.12.1 Requirement of Training for Certifying Personnel

- a. Specific training is required by certifying personnel to perform the maintenance. The training shall be performed by OEM / OEM recognized training organization / CAAM 145 organization.
- b. Certifying Personnel shall need to comply with the minimum training requirement as required by MOE Part 3.4.

DOCUMENT REFERENCE:	GAM/WCP/PART 2.1.8	DATE:	18 April 2022
AMENDMENT:	Initial	PAGE:	Part 1.12 1 of 1

WORKSHOP CAPABILITY PROCEDURE

PART 1.13 SAMPLE WORKSHEET

a) F11R (AW139) Inflatable Life Raft Workshop Worksheet

CLIENT/OWNER:		AIRCRAFT REGD		CSM*		REQUISITE FOR COLLECTION: W/W-W/22/																					
BASE/FACILITY: GAM SAFETY WORKSHOP		AIRCRAFT S/N		CSM*		REQUISITE ACT: GAM-WS-R-0-13-																					
DATE IN: 8 / 0 / 8		TSM*		TSD*		SHEET: 1 OF 8																					
DATE OUT: 8 / 0 / 8		* IF APPLICABLE		Reason for raising:		Other requirements/information:																					
EMERGENCY LIFE RAFT ASST ANNUAL INSPECTION - AW139 LIFE RAFT [REDACTED] -				Raised by and date: BAHIRAN D / D / D		N/A																					
ITEM	Description	Technician	Approval Initials	Date																							
EMERGENCY LIFE RAFT ASST ANNUAL INSPECTION																											
<p>COMPONENT DETAIL:</p> <table border="1" style="width: 100%; border-collapse: collapse;"> <thead> <tr> <th>Description</th> <th>P/N</th> <th>S/N</th> <th>D.O.M</th> </tr> </thead> <tbody> <tr> <td>Left-hand life raft assembly</td> <td></td> <td></td> <td></td> </tr> <tr> <td>Life raft assembly</td> <td></td> <td></td> <td></td> </tr> <tr> <td>Reservoir assembly</td> <td></td> <td></td> <td></td> </tr> </tbody> </table> <table border="1" style="width: 100%; border-collapse: collapse;"> <tr> <td>Cylinder Last Hydro Date</td> <td></td> <td>Pressure</td> <td></td> </tr> </table> <p style="text-align: center;">WARNINGS</p> <ul style="list-style-type: none"> - The life raft surface is easily damaged by sharp or abrasive object. Do not use pointed or sharp edge tools when you touch or move the life raft. Do not put the life raft on surfaces which have sharp edges or abrasive objects. Do not wear clothes that can damage the life raft fabric. - Be careful not to pull the control cable. The high pressure in the charge vessel can possibly cause a fire of the subsystem. <u>Also</u> the leak of the high pressure gas can cause injury to the personnel. <p style="text-align: center;">Caution</p> <p style="text-align: center;">Only approved persons are permitted to do this procedure.</p>								Description	P/N	S/N	D.O.M	Left-hand life raft assembly				Life raft assembly				Reservoir assembly				Cylinder Last Hydro Date		Pressure	
Description	P/N	S/N	D.O.M																								
Left-hand life raft assembly																											
Life raft assembly																											
Reservoir assembly																											
Cylinder Last Hydro Date		Pressure																									
1. Life raft container (left/right) – Detailed Inspection																											
1.1	LA.WAW139 AMP 39-A-25-62-07-00A-31AA-K																										
	Remarks:																										
<input type="checkbox"/> *The work recorded above has been carried out in accordance with the requirements of the Malaysian Civil Aviation Regulation for the time being in force and in that respect the aircraft / equipment is considered fit for release to service.																											
<input type="checkbox"/> *The work recorded above has been carried out in accordance with the requirements of the _____ for the time being in force and in that respect the aircraft / equipment is considered fit for release to service.																											
<input type="checkbox"/> *TICK WHERE APPLICABLE																											
PARTS APPROVED BY S1110011	S.S. L1000	DISPATCH M1L	DISPATCH SUN	FLIGHT T011	FLIGHT CFL	DISPATCH S1010101	DISPATCH S1010101																				
FORM REF: GAMR-001C																											

DOCUMENT REFERENCE:	GAM/WCP/PART 2.1.8	DATE:	18 April 2022
AMENDMENT:	Initial	PAGE:	Part 1.13 1 of 2

WORKSHOP CAPABILITY PROCEDURE

b) F14R (AW189) Inflatable Life Raft Workshop Worksheet

CLIENT/OWNER:		AIRCRAFT REGD AIRCRAFT REGD		CSN*	WORKSHOP WORKSHEET NO: WW-W022/ WORK ORDER REF: GAM-WS-W0-32- SHEET: 1 OF 2																							
BASE/FACILITY: GAM SAFETY WORKSHOP		TSN*		TSD*																								
DATE IN: 0 / 0 / 0 DATE OUT: 0 / 0 / 0		* IF APPLICABLE		Other requirements/information: N/A																								
Reason for raising: EMERGENCY LIFE RAFT A 88Y ANNUAL INSPECTION - AW189 LIFE RAFT <u>LEFT</u> -		Raised by and date: BAHIRAN 0 / 0 / 0																										
ITEM	Description	Technician	*Approval Holder	Date																								
EMERGENCY LIFE RAFT A 88Y ANNUAL INSPECTION																												
<p>COMPONENT DETAIL:</p> <table border="1" style="width: 100%; border-collapse: collapse;"> <thead> <tr> <th>Description</th> <th>P/N</th> <th>S/N</th> <th>D.O.M</th> </tr> </thead> <tbody> <tr> <td>Left-hand life raft assembly</td> <td></td> <td></td> <td></td> </tr> <tr> <td>Life raft assembly</td> <td></td> <td></td> <td></td> </tr> <tr> <td>Reservoir assembly</td> <td></td> <td></td> <td></td> </tr> </tbody> </table> <table border="1" style="width: 100%; border-collapse: collapse;"> <tr> <td> </td> <td> </td> <td> </td> <td> </td> </tr> <tr> <td> </td> <td> </td> <td> </td> <td> </td> </tr> </table> <p style="text-align: center;">WARNINGS</p> <ul style="list-style-type: none"> • The life raft surface is easily damaged by sharp or abrasive object. Do not use pointed or sharp edges tools when you touch or move the life raft. Do not put the life raft on surfaces which have sharp edges or abrasive objects. Do not wear clothes that can damage the life raft fabric. • Be careful not to pull the control cable. The high pressure in the charge vessel can possibly cause a fire of the subsystem. <u>Also</u> the leak of the high pressure gas can cause injury to the personnel. <p style="text-align: center;">Caution</p> <p style="text-align: center;">Only approved persons are permitted to do this procedure.</p>					Description	P/N	S/N	D.O.M	Left-hand life raft assembly				Life raft assembly				Reservoir assembly											
Description	P/N	S/N	D.O.M																									
Left-hand life raft assembly																												
Life raft assembly																												
Reservoir assembly																												
1. Life raft container (left/right) – DISASSEMBLE PROCEDURE																												
1.1	<p style="text-align: center;">I.A.W AW189 AMP 89-A-25-63-09-01A-530A-B.</p> <p>Remarks:</p>																											
<input type="checkbox"/> *The work recorded above has been carried out in accordance with the requirements of the Malaysian Civil Aviation Regulation for the time being in force and in that respect the aircraft / equipment is considered fit for release to service.																												
<input type="checkbox"/> *The work recorded above has been carried out in accordance with the requirements of the _____ for the time being in force and in that respect the aircraft / equipment is considered fit for release to service.																												
<input type="checkbox"/> *TICK WHERE APPLICABLE																												
PARTS ISSUED & RETURNED	D.S. RANGE	SUPPLIERS NO.	PROBES NO.	FLIGHT TEST	TERRAIN CHK.	ADDITIONAL WORKSHEET	NON TOXIC DETECT	FLAMING FORGET	OILY SPRAYS	SWISS SPRAYS	D.O. STATUS	AIRCRAFT STATUS	ENGINE STATUS	PROPPELLER STATUS	LOG BOOK	OEM/OPP LOG BOOK	WEB RECORDS WEB											

FORM REF: GAMVE-001C

DOCUMENT REFERENCE:	GAM/WCP/PART 2.1.8	DATE:	18 April 2022
AMENDMENT:	Initial	PAGE:	Part 1.13 2 of 2