

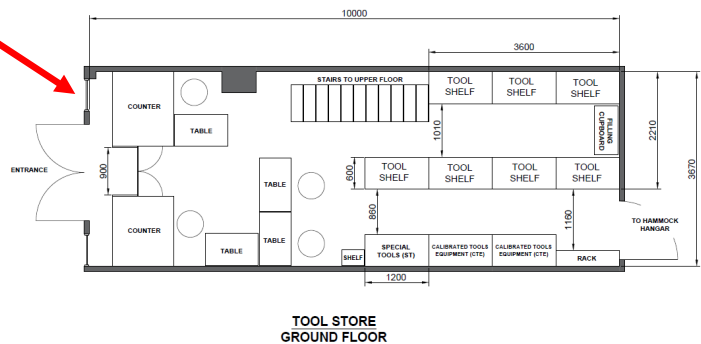
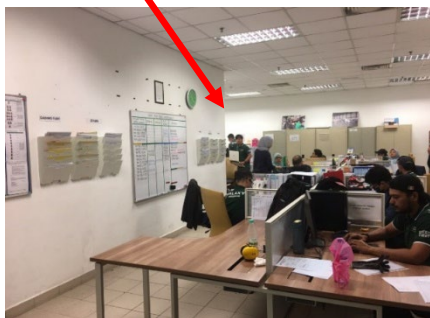
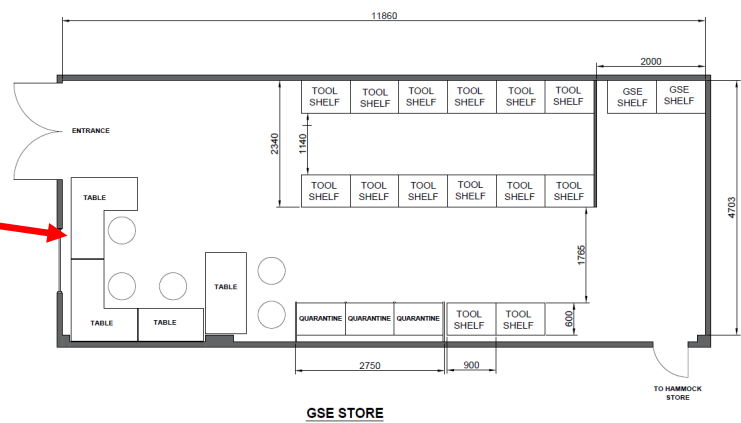
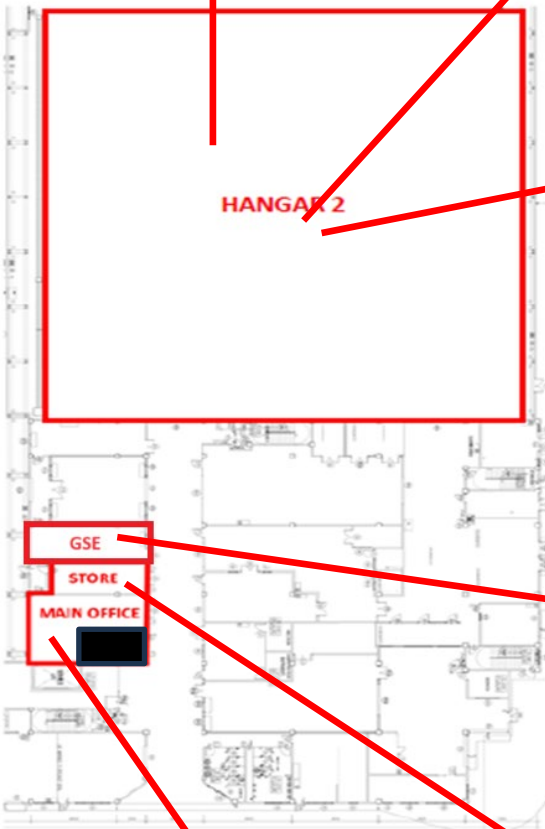
## MAINTENANCE ORGANISATION EXPOSITION

### 1.8.4 Layout Plans

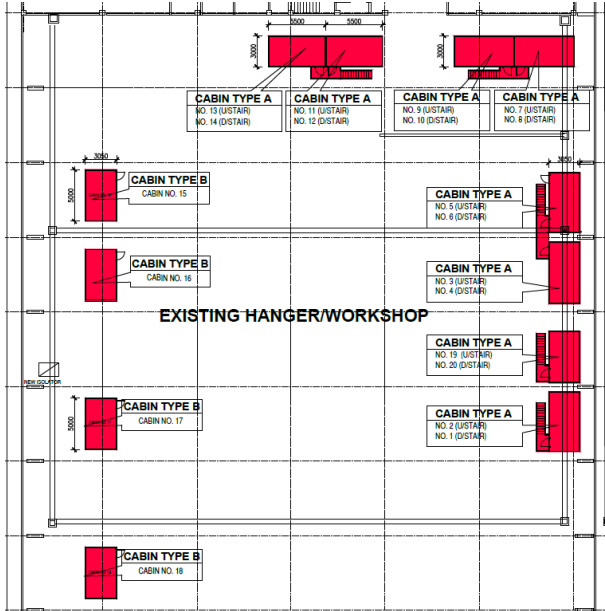
1. GAM Line & Base Maintenance office at UniKL MIAT
  - a) GAM-MIAT facilities consist of maintenance area (Hangar 2), office accommodation (Production Planning and LAEs work area), storage area (tool store) and numbers of cabins for crew rest area, meeting room and customer's room.



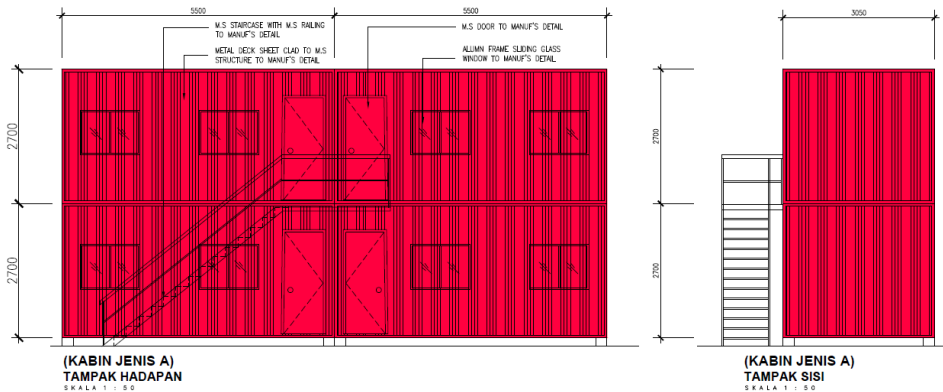
## MAINTENANCE ORGANISATION EXPOSITION



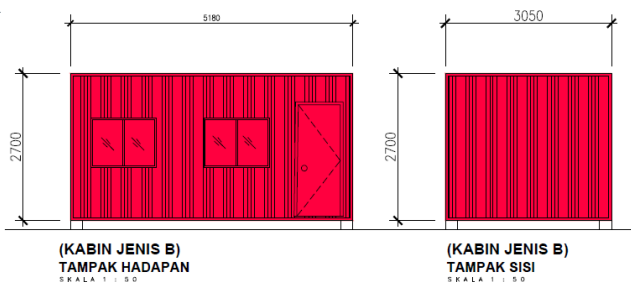
## MAINTENANCE ORGANISATION EXPOSITION



Front view of hangar



Cabin Type A



Cabin Type B