

EVACUATION DIAGRAM

IN CASE OF FIRE

REMOVE PEOPLE

- FROM IMMEDIATE DANGER IF SAVE TO DO SO

ALERT OTHERS

- NOTIFY THE FIRST RESPONDER & OTHERS

CONFINE FIRE AND SMOKE

- CLOSE DOOR AND WINDOW

EVACUATE

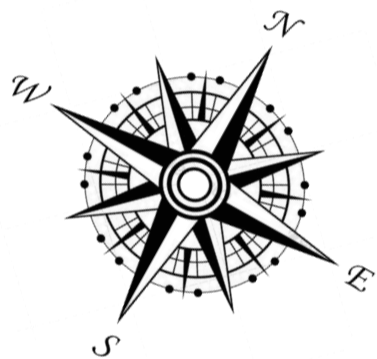
- FOLLOW INSTRUCTION BY SAFETY WARDEN

If you have the slightest doubt about your ability to fight a fire

EVACUATE IMMEDIATELY!

**IMMEDIATE
EMERGENCY
CONTACT
NUMBER CALL**

999

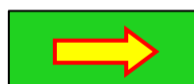


LEGEND

Assembly Point



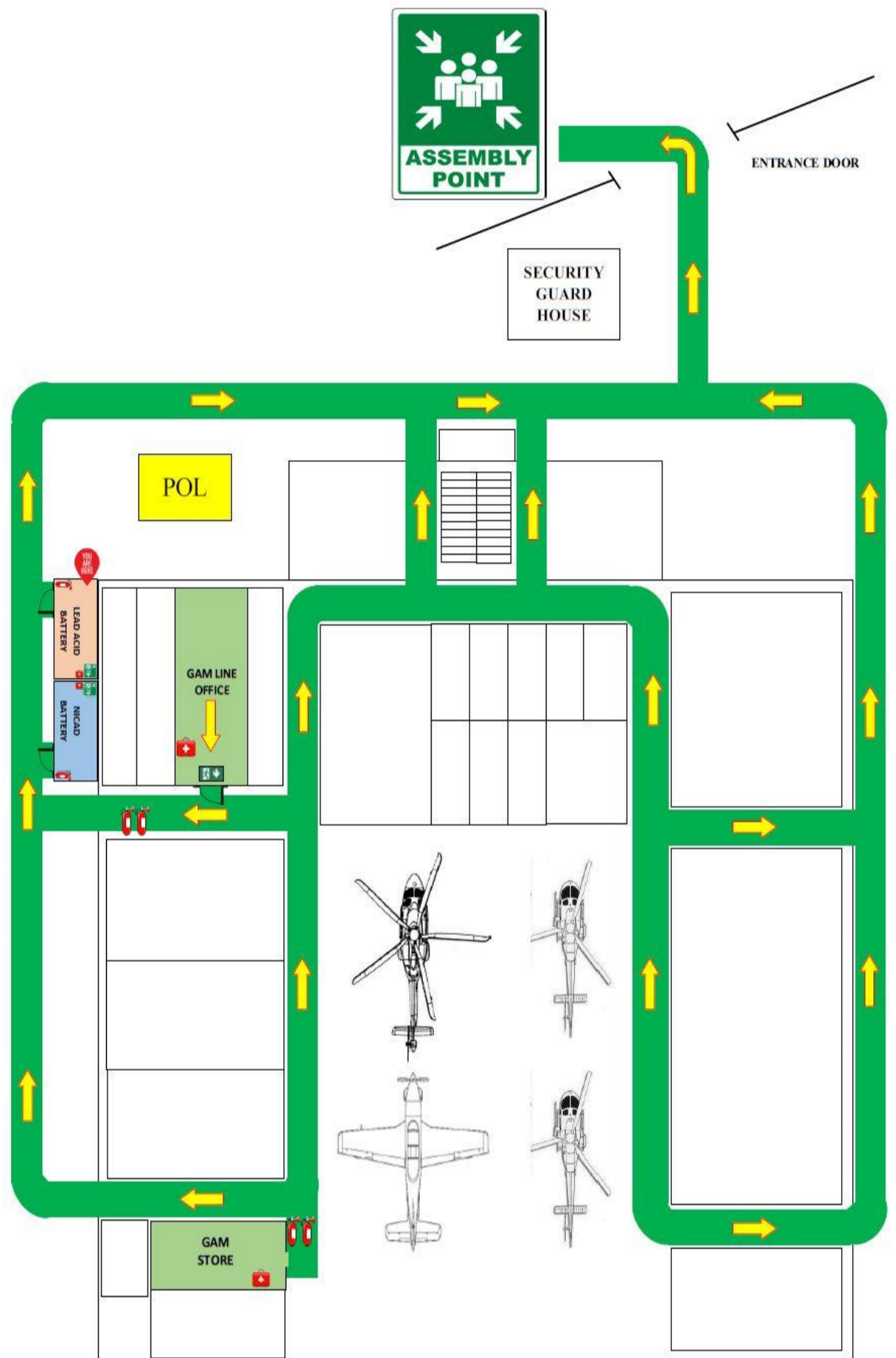
Evacuation Route



First Aid Kit



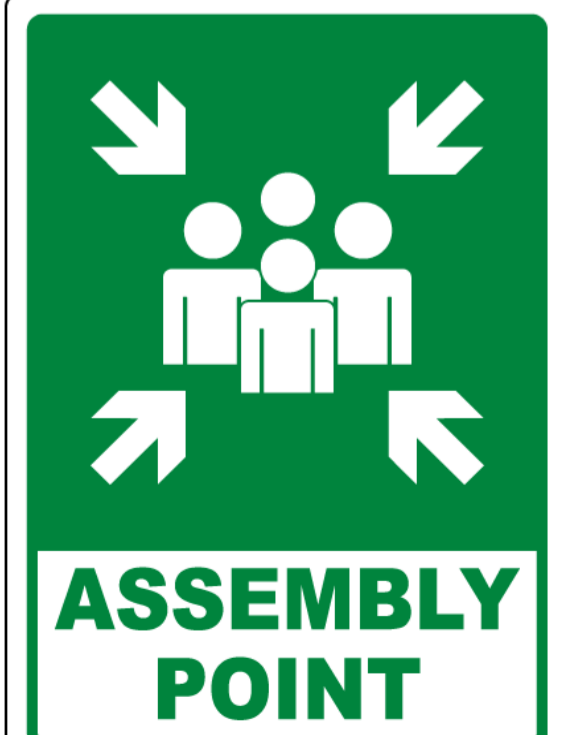
Fire Extinguisher



ATTENTION

IN CASE OF EMERGENCY ALL EMPLOYEES MUST COME OUT OFF THE BUILDING ACCORDING TO THE MOST APPROPRIATE AND CLOSEST ROUTE WITH FOLLOW THE GREEN PATH WITH YELLOW ARROW TOWARDS THE ASSEMBLY POINT

GAM-SD/SP-41/04-2022



Galaxy Aerospace
maintenance . repair . overhaul

GAM-MAINTENANCE OFFICE

GALAXY AEROSPACE (M) SDN. BHD.

Pasukan Gerakan Udara Polis Diraja
Malaysia Pangkalan Sabah
Jalan Airport, Tanjung Aru, 88100 Kota
Kinabalu, Sabah