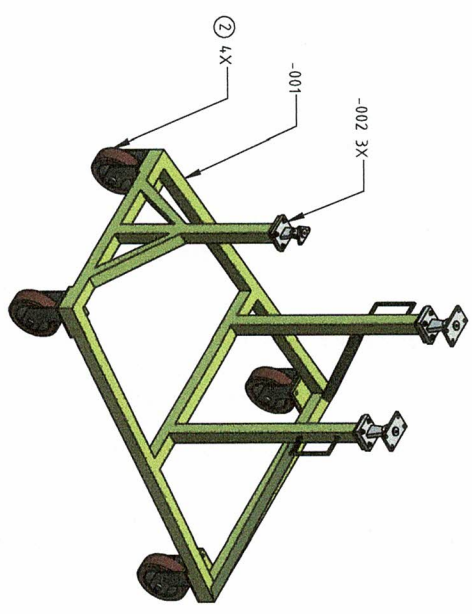
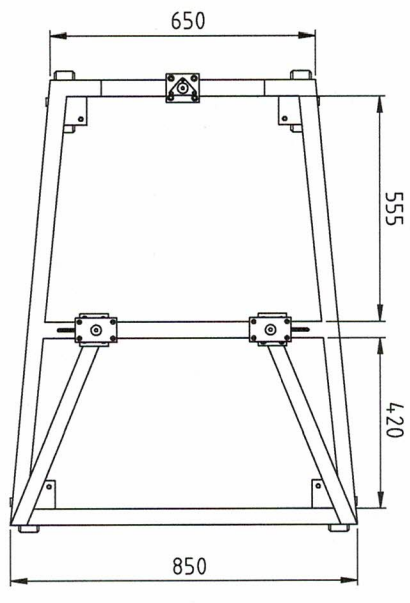
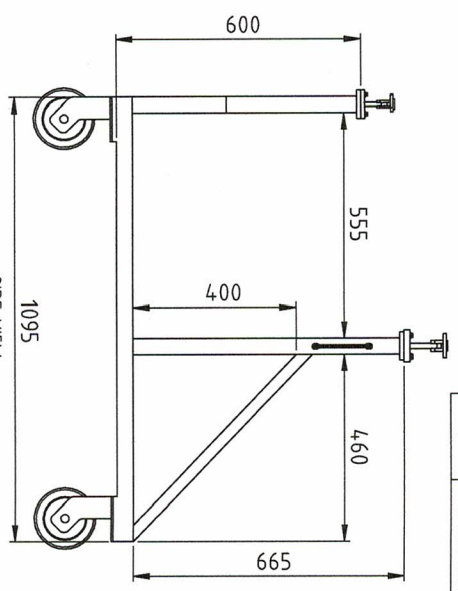
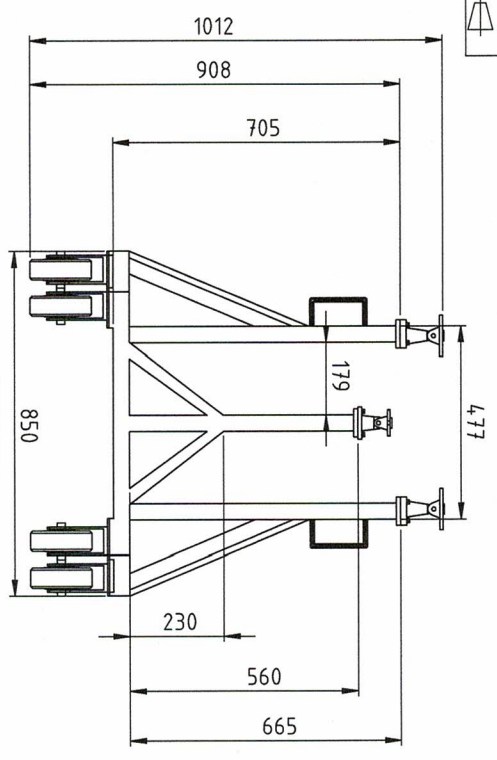


REV	DESCRIPTION	DATE
0	INITIAL REVISION	01/12/2021



NOTES :

1. ALL STRUCTURES ARE CLOSED-ENDS AND EACH JOINT TO BE FUSION ARC BUTT/FILLET WELDED PER EN ISO 4063:2009 OR EQUIVALENT.
2. MACHINING ALL OVER IN ACCORDANCE WITH ISO 14649-2011 OR EQUIVALENT.
3. REMOVE ALL SHARP EDGES AND BURRS.
4. PERFORM NDT ON ALL WELDED PARTS. NO CRACKS ARE ALLOWED.
5. PERFORM LOAD TEST USING APPROXIMATELY 300KG OF LOADS. NO DEFECTS ARE ALLOWED.

ITEM NO	PART NUMBER	QTY	DESCRIPTION	MATERIAL	SPECIFICATIONS	REMARK
3	ED145001-002	3	CASTER WHEEL	POLYURETHANE	6" WHEEL	-
2	ED145001-001	1	ENGINE TROLLEY BASE	MILD STEEL	1 1/2" X 1 1/2"	-

BILL OF MATERIALS

PREPARED BY: AHMAD QAYYUM OTHMAN	DATE: 01/12/2021	DRAWING NO: ED145001	ACT TYPE: N/A
APPROVED BY: H. NIZAM MAZAR			



GALAXY AEROSPACE (M)
SDN. BHD.
ALL RIGHTS RESERVED
GAMF-006 MARCH 2021

THIS DOCUMENT IS THE PROPERTY OF GALAXY AEROSPACE (M) SDN BHD AND IS NOT TO BE REPRODUCED OR TRANSMITTED IN ANY FORM OR BY ANY MEANS, ELECTRONIC OR MECHANICAL, INCLUDING PHOTOCOPYING, RECORDING, OR BY ANY INFORMATION STORAGE AND RETRIEVAL SYSTEM. THE TECHNICAL CONTENT OF THIS DOCUMENT IS APPROVED BY GALAXY AEROSPACE (M) SDN BHD WITHOUT FURTHER WRITTEN CONSENT.
1. GAMF-006, REF. NO. 0001/2020/01 - 2. 001/14, REF. NO. 14/03/2020/01
RELATED DOC. CANNIS/10

UNLESS OTHERWISE SPECIFIED -
1. DIMENSIONS IN CM
2. TOLERANCES IN CM
XXX
XX
X
± 0.10
± 0.05
± 0.02
3. REMOVE BURRS AND SHARP EDGES