



**To** : Contracted AMO 145  
**CC** : GAM Accountable Manager, GAM Quality Assurance Manager  
**From** : Continuing Airworthiness Manager, GAM  
**Subject** : **9M-PMA Floatation Gas Bottle Pressure Limits Placard Reference**

**1. REFERENCE**

AW139 Rotorcraft Flight Manual Supplement Doc No 139G0290X002, Supplement 9.

**2. APPLICABILITY**

AW139 9M-PMA S/N 31807

**3. INTRODUCTION**

Gas Bottle Pressure Limits placards fitted on the float cover have been removed due to incorrect placard model fitted. Previously, placards fitted on the aircraft is for Aerosekur float model, however the correct placards should be as per AW139 RFM Supplement 9, Page S9-6F, Figure 2-4 as the aircraft is installed with Aerazur float model.

Current floatation bottle pressure is in satisfactory pressure range when checked against the applicable Gas Bottle Pressure Limits placard as per AW139 RFM Supplement 9.

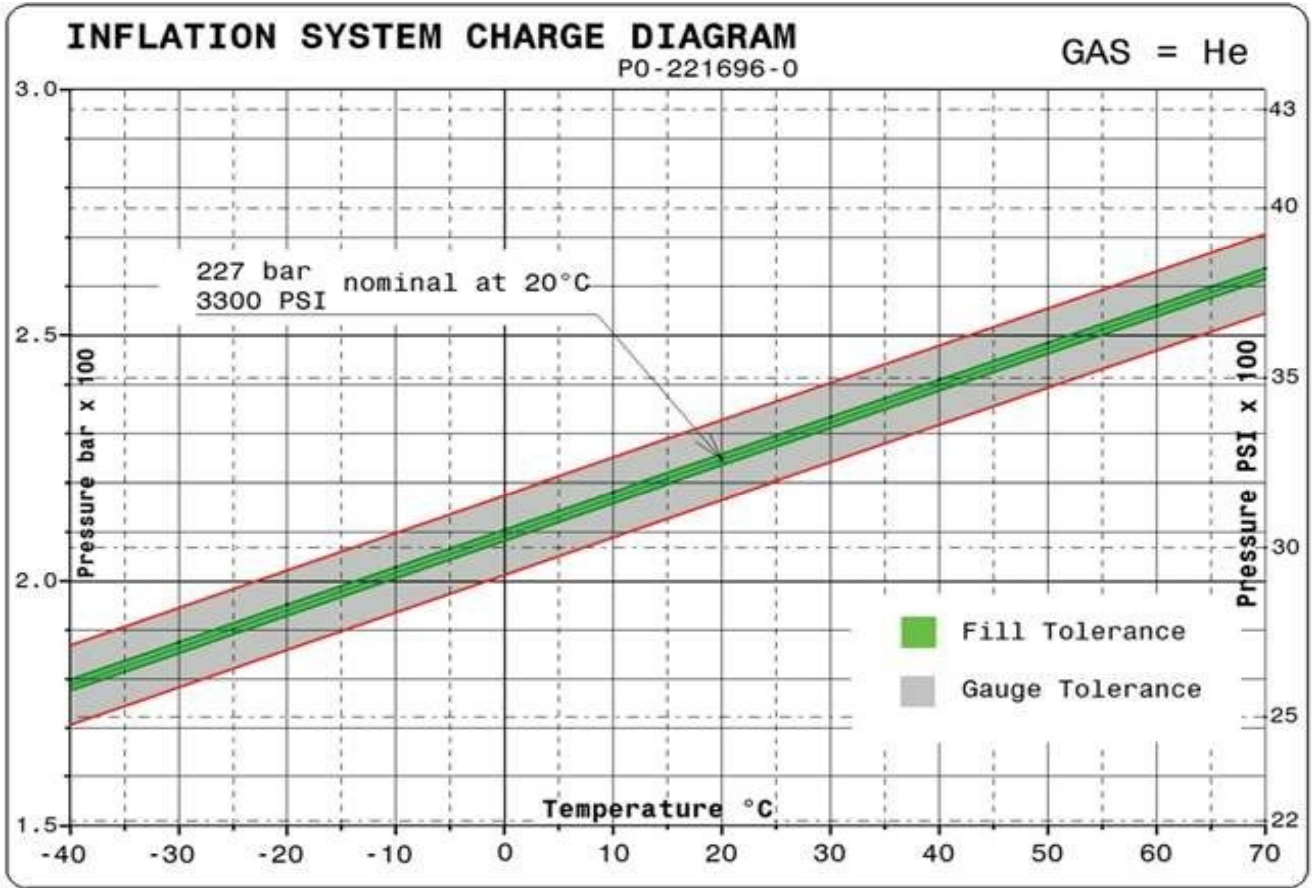
This notice is issued as a temporary instruction for contracted AMO maintaining AW139 9M-PMA S/N 31807 to use graph on the AW139 RFM Supplement 9, Page S9-6F, Figure 2-4 latest revision for checking the pressure of the float gas bottle until the new ordered placards arrived and installed.

**4. REQUIREMENT**

- a) Contracted AMO 145  
To use AW139 RFM Supplement 9, Page S9-6F, Figure 2-4 as attached or latest revision as reference to check the pressure of the float gas bottle when fitted on the 9M-PMA S/N 31807 aircraft

Kindly be informed on the requirement.

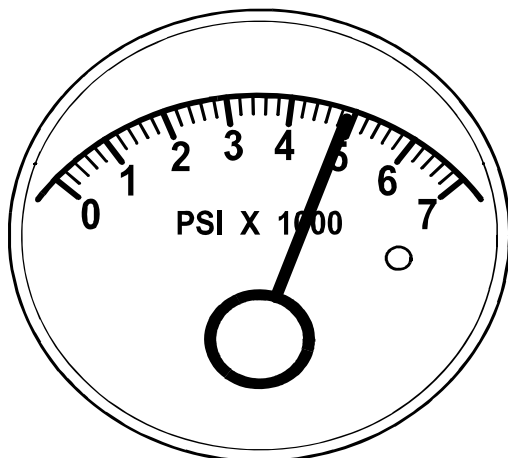
Hazrin Sani  
Continuing Airworthiness Manager



ICN-39-A-155009-G-00001-29022-A-001-01

Figure 2-4 Flotation Gas Bottle Pressure Limits  
P/N 3G9560F00212 (Aerazur)

For installations that have the Thermomanometer the indicator needle must be in the green arc for a serviceable system. Refer to Figure 2-5.



PRESSURE GAUGE



THERMOMANOMETER

ICN-39-A-155009-G-00001-29028-A-001-01

Figure 2-5 Flotation Pressure Gauge and Thermomanometer  
(Examples)