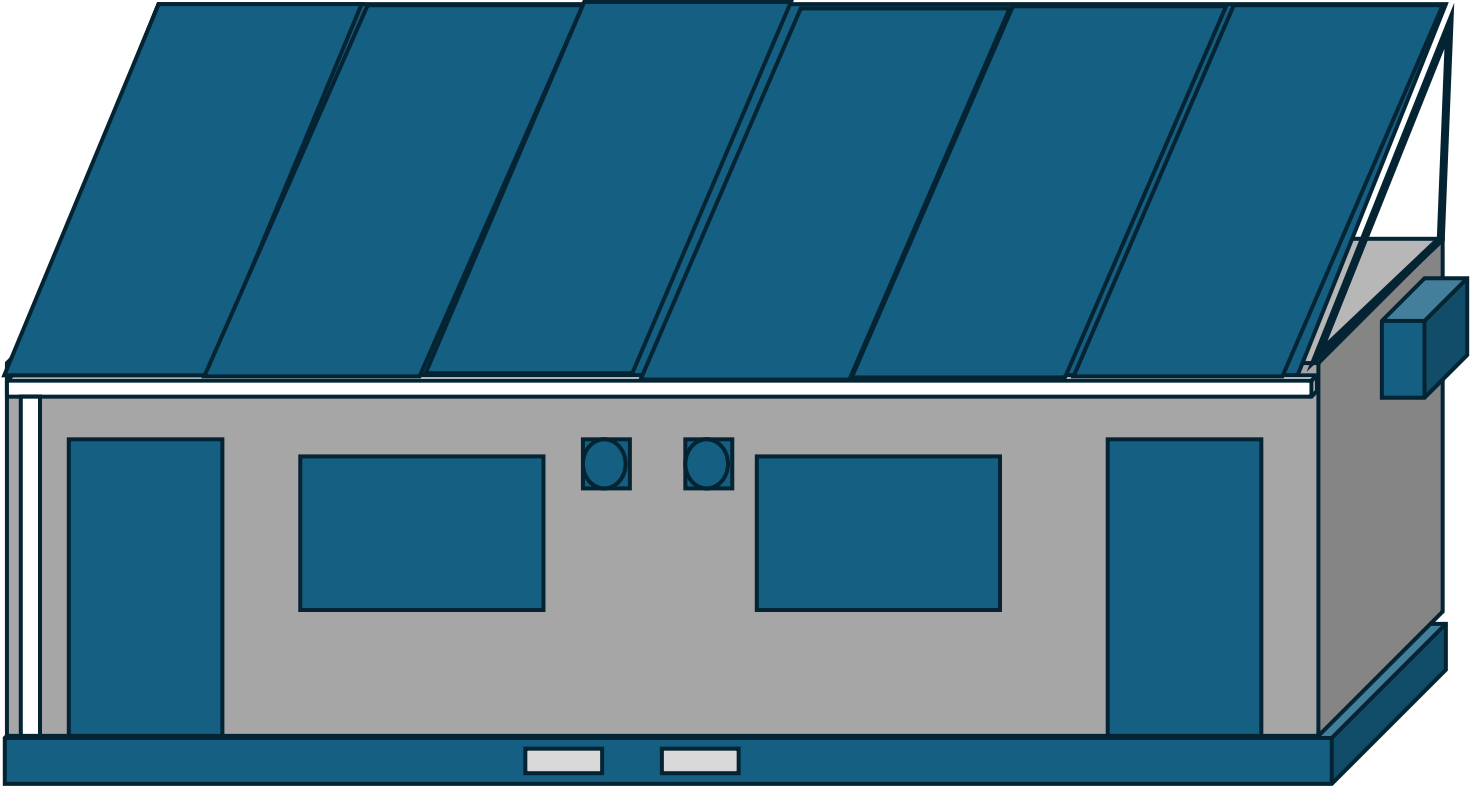


SHELA ENTERPRISE
GAM PGU SABAH BATTERY WORKSHOP PROJECT



JOB REQUESTED BY CUSTOMER

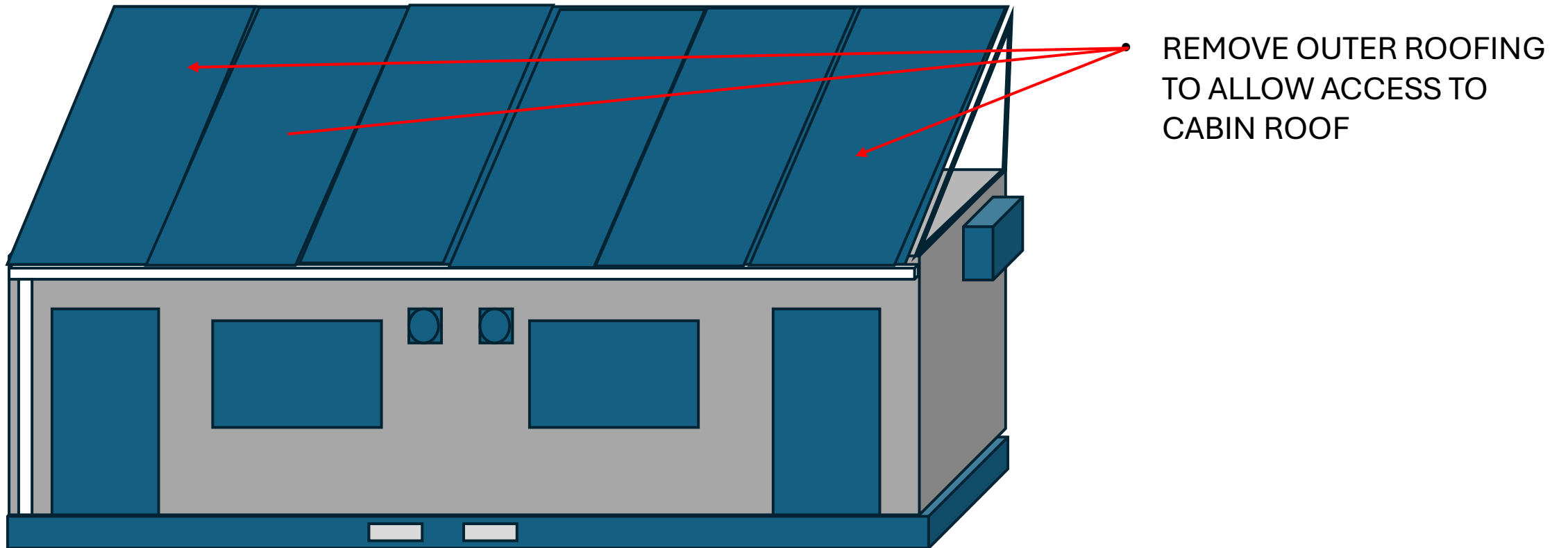
- 1. REPAIR AND REPLACE THE DAMAGE INNER CEILING AND INNER WALL EFFECTED BY TERMITES AND CHEMICAL VAPOUR**
- 2. REPAIR AND REPLACE THE DAMAGE VINYL FLOORING**
- 3. ADD 2 UNIT OF CEILING VENTILATION FAN**
- 4. REPLACE BROKEN 1 UNIT OF BROKEN VENTILATION FAN AT CHEMICAL STORE**
- 5. RELOCATE DOOR NUMBER 1 CABIN TO NEW LOCATION**
- 6. TERMITES BUSTING AND PROOFING**

PROPOSAL SCOPE OF JOB

1. REPAIR AND REPLACE THE DAMAGE INNER LAYER OF CABIN ROOFING CONSTRUCT WITH WATERPROOF FLY-WOOD THAT THAT BADLY EFFECTED BY TERMITES TO PREVENT FUTURE INFECTION WITH MILD 2 MM 4' X 8' WELDED STEEL SHEET
2. REPAIR AND REPLACE THE DAMAGE INNER LAYER OF 2 X CABIN CEILING AND WALL WITH 6 MM AND 9 MM 4' X 8' CEMENT BOARD
3. REPAIR AND REPLACE THE DAMAGE VINYL FLOORING WITH THE NEW VINYL TILES
4. INSTALL ADDITIONAL 2 UNIT NEW CEILING VENTILATION FAN (1 UNIT ON EACH CABIN) AS REQUESTED
5. REPLACE BROKEN 1 UNIT OF BROKEN VENTILATION FAN AT CHEMICAL STORE WITH NEW FAN + HOLE MODIFICATION JOB AS REQUESTED
6. RELOCATE CABIN DOOR NUMBER 1 CABIN TO NEW LOCATION AS REQUESTED
7. TERMITES BUSTING WORKS WITH CHEMICAL SURROUND THE CABIN + REINFORCING WITH FIBREGLASS SHEET AT POTENTIAL TERMITES ROUTE ENTERING THE CABIN (TERMITES PROOFING)

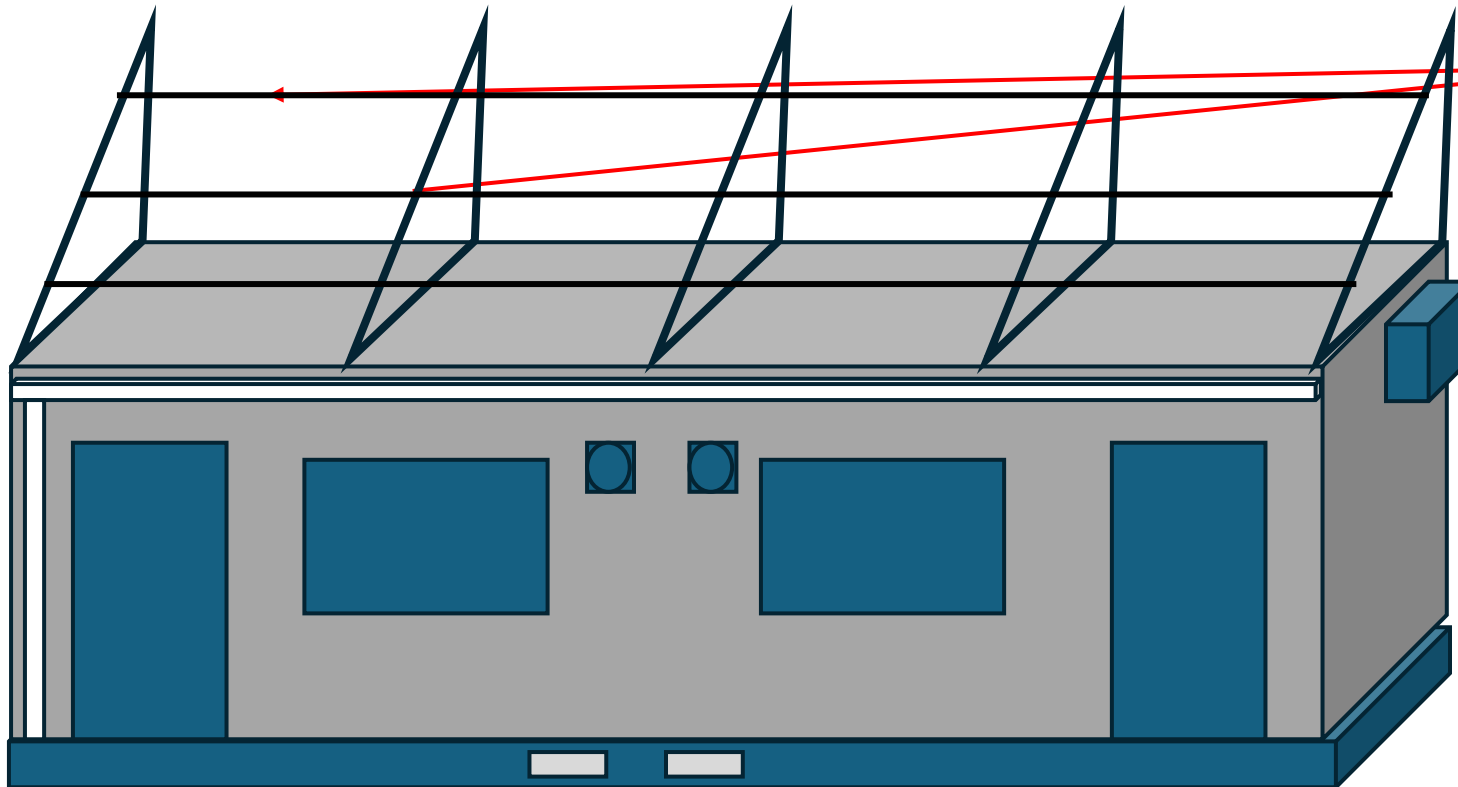
JOB # 1

REPAIR AND REPLACE THE DAMAGE INNER LAYER OF CABIN ROOFING CONSTRUCT WITH WATERPROOF FLY-WOOD THAT THAT BADLY EFFECTED BY TERMITES TO PREVENT FUTURE INFECTION WITH MILD 2 MM 4' X 8' WELDED STEEL SHEET



JOB # 1

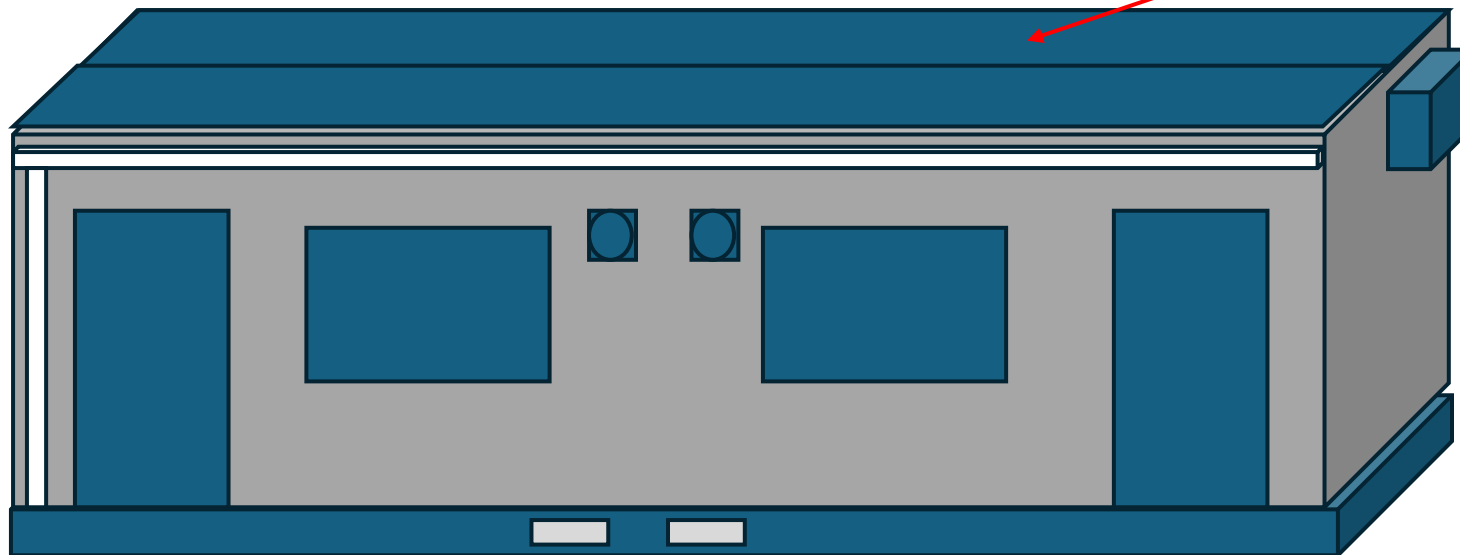
REPAIR AND REPLACE THE DAMAGE INNER LAYER OF CABIN ROOFING CONSTRUCT WITH WATERPROOF FLY-WOOD THAT THAT BADLY EFFECTED BY TERMITES TO PREVENT FUTURE INFECTION WITH MILD 2 MM 4' X 8' WELDED STEEL SHEET



REMOVE FRAME
STRUCTURE TO ALLOW
ACCESS TO CABIN ROOF

JOB # 1

REPAIR AND REPLACE THE DAMAGE INNER LAYER OF CABIN ROOFING CONSTRUCT WITH WATERPROOF FLY-WOOD THAT THAT BADLY EFFECTED BY TERMITES TO PREVENT FUTURE INFECTION WITH MILD 2 MM 4' X 8' WELDED STEEL SHEET

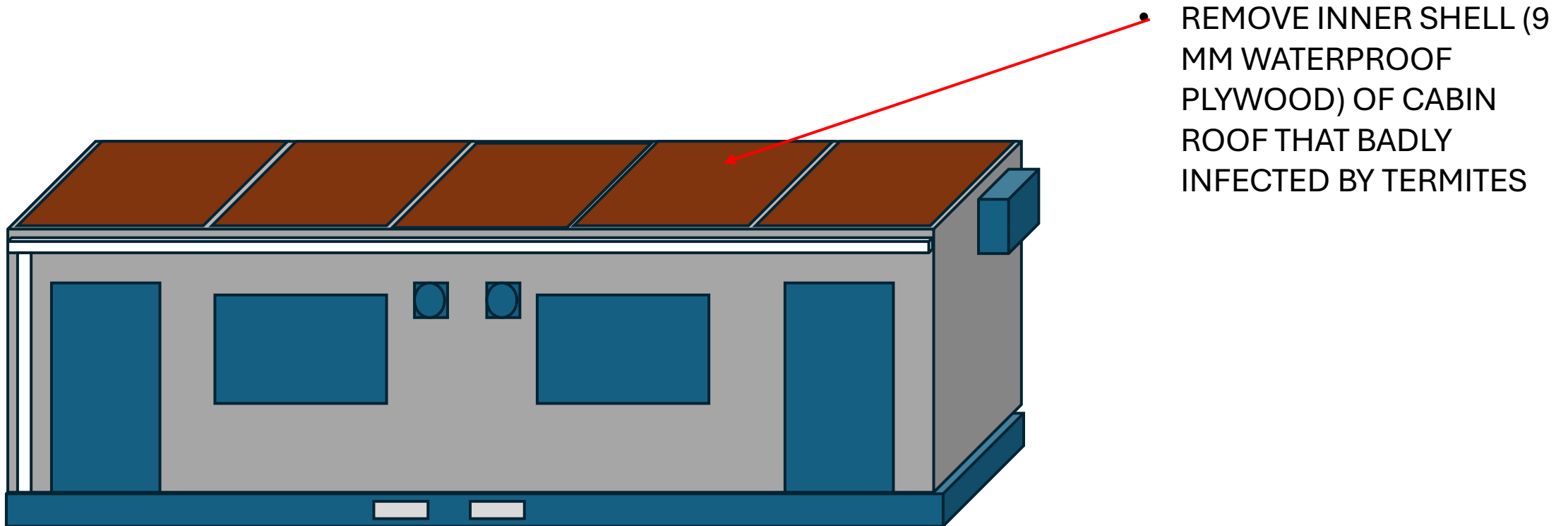


• REMOVE OUTER SHELL (GALVANIZE STEEL SHEET) OF CABIN ROOF GLUED AND RIVETTED TO UPPER CABIN FRAME

NOTE : ONCE THE GALVANIZE STEEL SHEET REMOVED CANNOT BE USED AND WILL BE REPLACE WITH 2 MM 4' X 8' MILD STEEL SHEET.

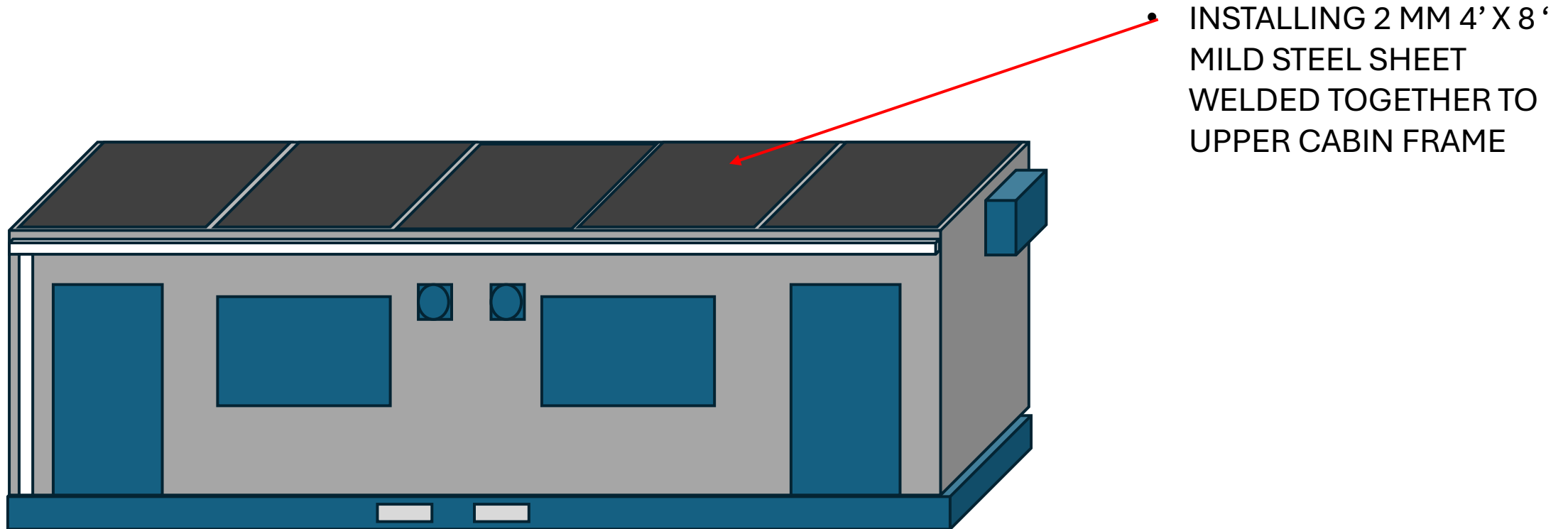
JOB # 1

REPAIR AND REPLACE THE DAMAGE INNER LAYER OF CABIN ROOFING CONSTRUCT WITH WATERPROOF FLY-WOOD THAT THAT BADLY EFFECTED BY TERMITES TO PREVENT FUTURE INFECTION WITH MILD 2 MM 4' X 8' WELDED STEEL SHEET



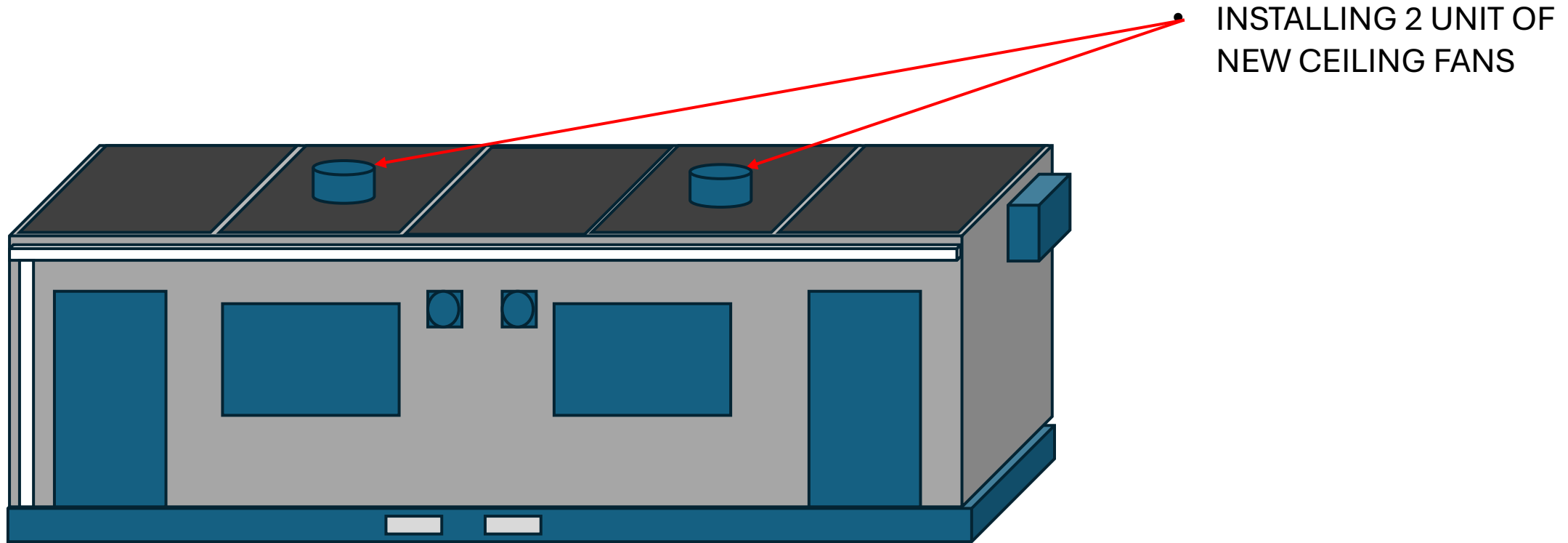
JOB # 1

REPAIR AND REPLACE THE DAMAGE INNER LAYER OF CABIN ROOFING CONSTRUCT WITH WATERPROOF FLY-WOOD THAT THAT BADLY EFFECTED BY TERMITES TO PREVENT FUTURE INFECTION WITH MILD 2 MM 4' X 8' WELDED STEEL SHEET



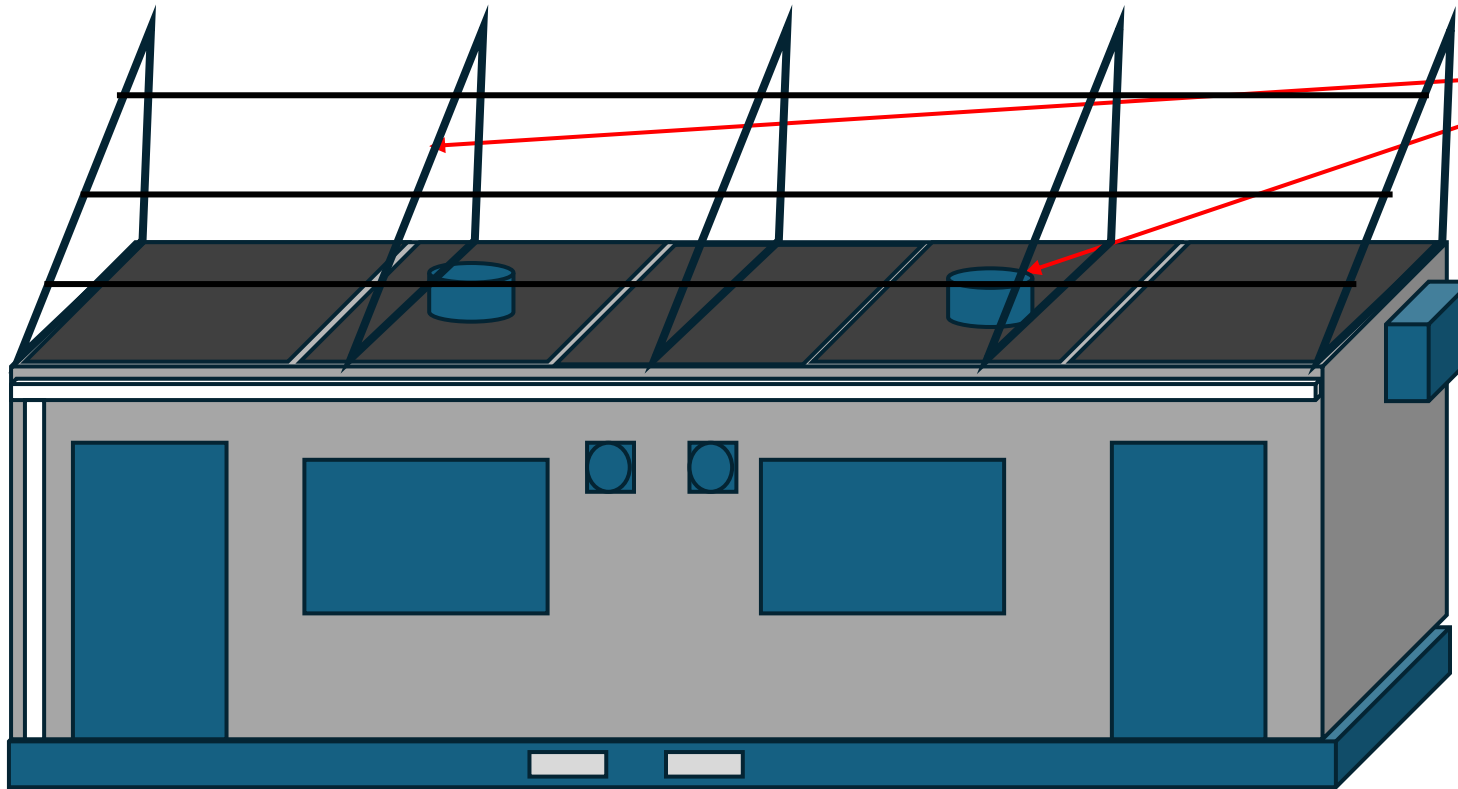
JOB # 1

REPAIR AND REPLACE THE DAMAGE INNER LAYER OF CABIN ROOFING CONSTRUCT WITH WATERPROOF FLY-WOOD THAT THAT BADLY EFFECTED BY TERMITES TO PREVENT FUTURE INFECTION WITH MILD 2 MM 4' X 8' WELDED STEEL SHEET



JOB # 1

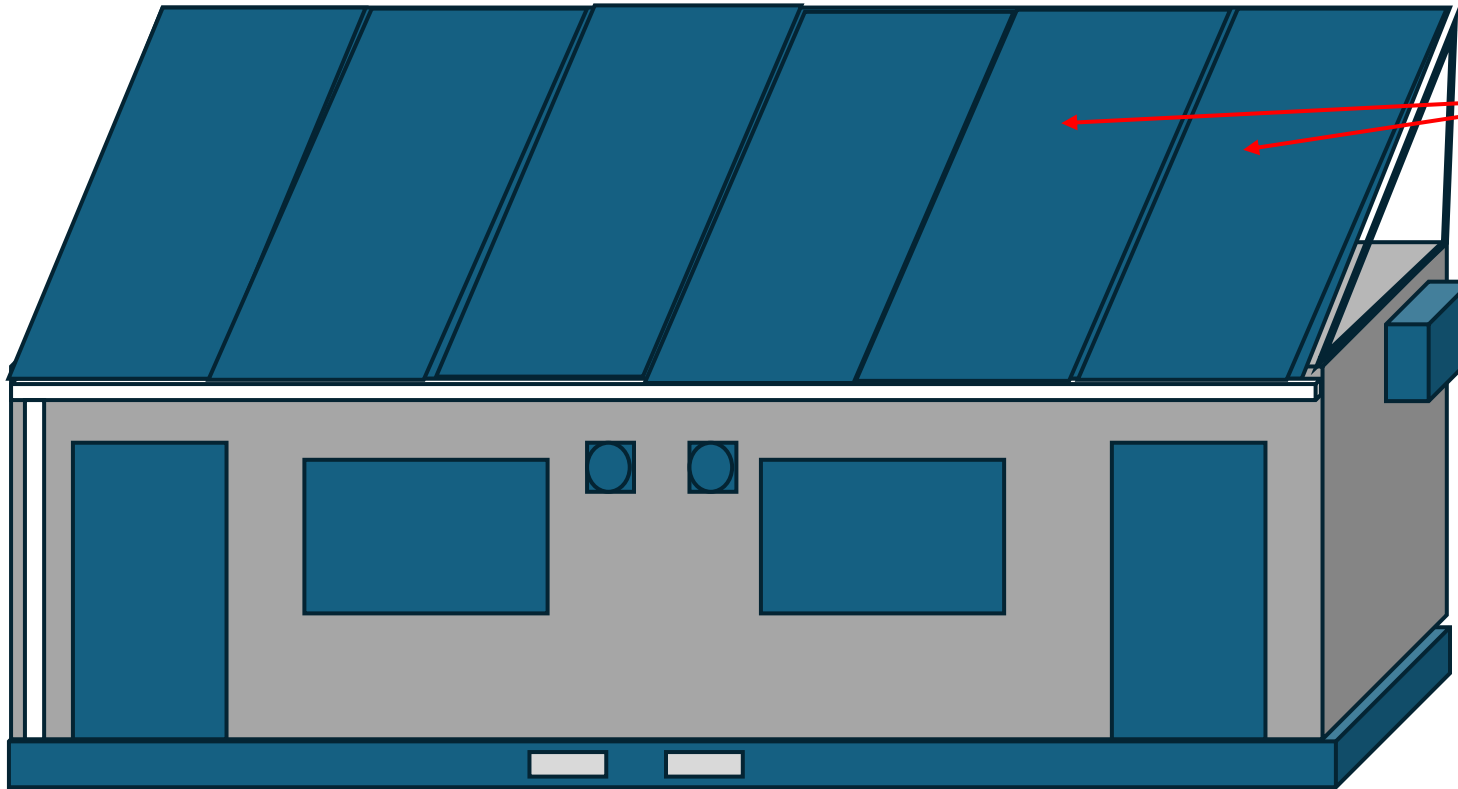
REPAIR AND REPLACE THE DAMAGE INNER LAYER OF CABIN ROOFING CONSTRUCT WITH WATERPROOF FLY-WOOD THAT THAT BADLY EFFECTED BY TERMITES TO PREVENT FUTURE INFECTION WITH MILD 2 MM 4' X 8' WELDED STEEL SHEET



REINSTALL FRAME
STRUCTURE TO ALLOW
INSTALLATION OF
ADDITIONAL ROOF
(ADDITIONAL
PROTECTION)

JOB # 1

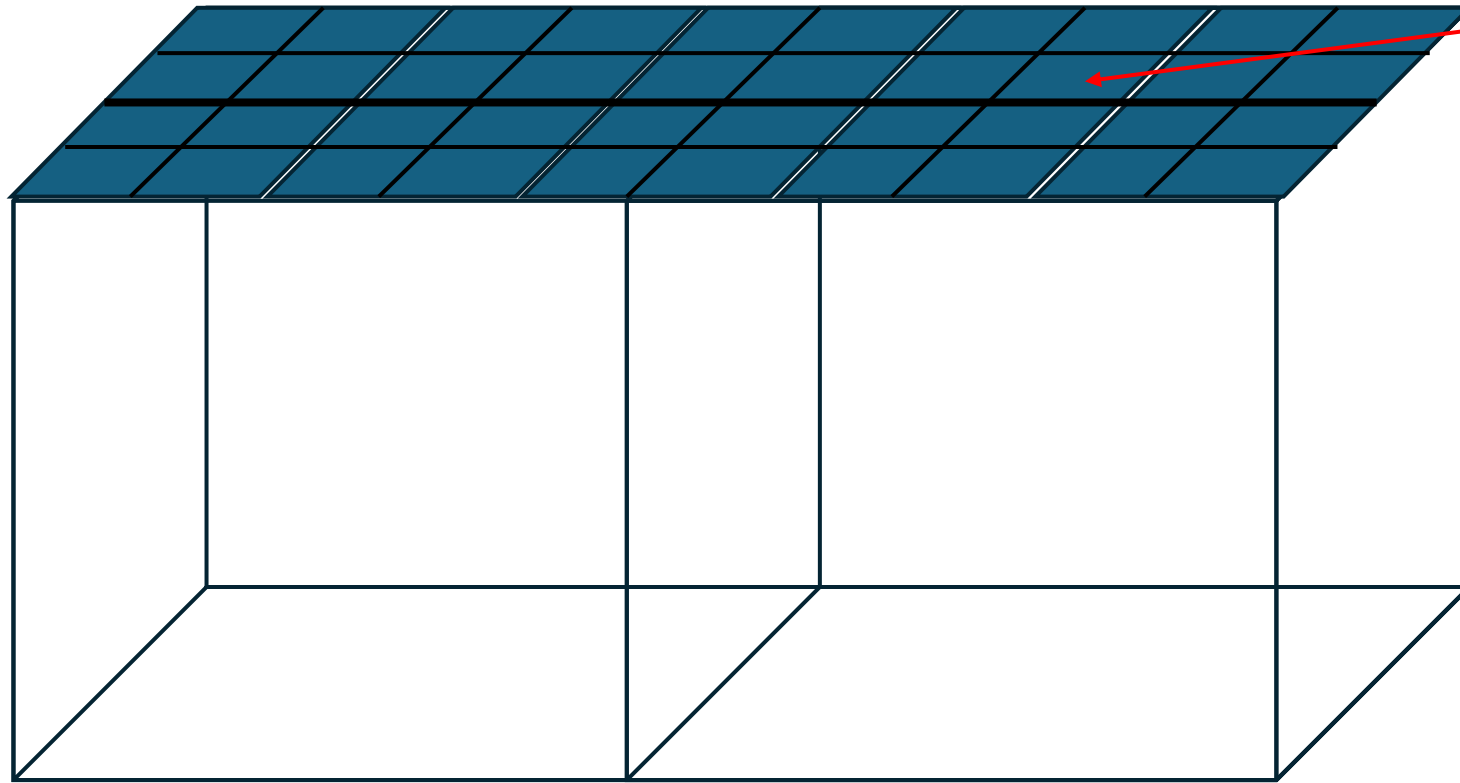
REPAIR AND REPLACE THE DAMAGE INNER LAYER OF CABIN ROOFING CONSTRUCT WITH WATERPROOF FLY-WOOD THAT THAT BADLY EFFECTED BY TERMITES TO PREVENT FUTURE INFECTION WITH MILD 2 MM 4' X 8' WELDED STEEL SHEET



REINSTALL OFF EXTRA LAYER
OF CABIN ROOFING SYSTEM

JOB # 2

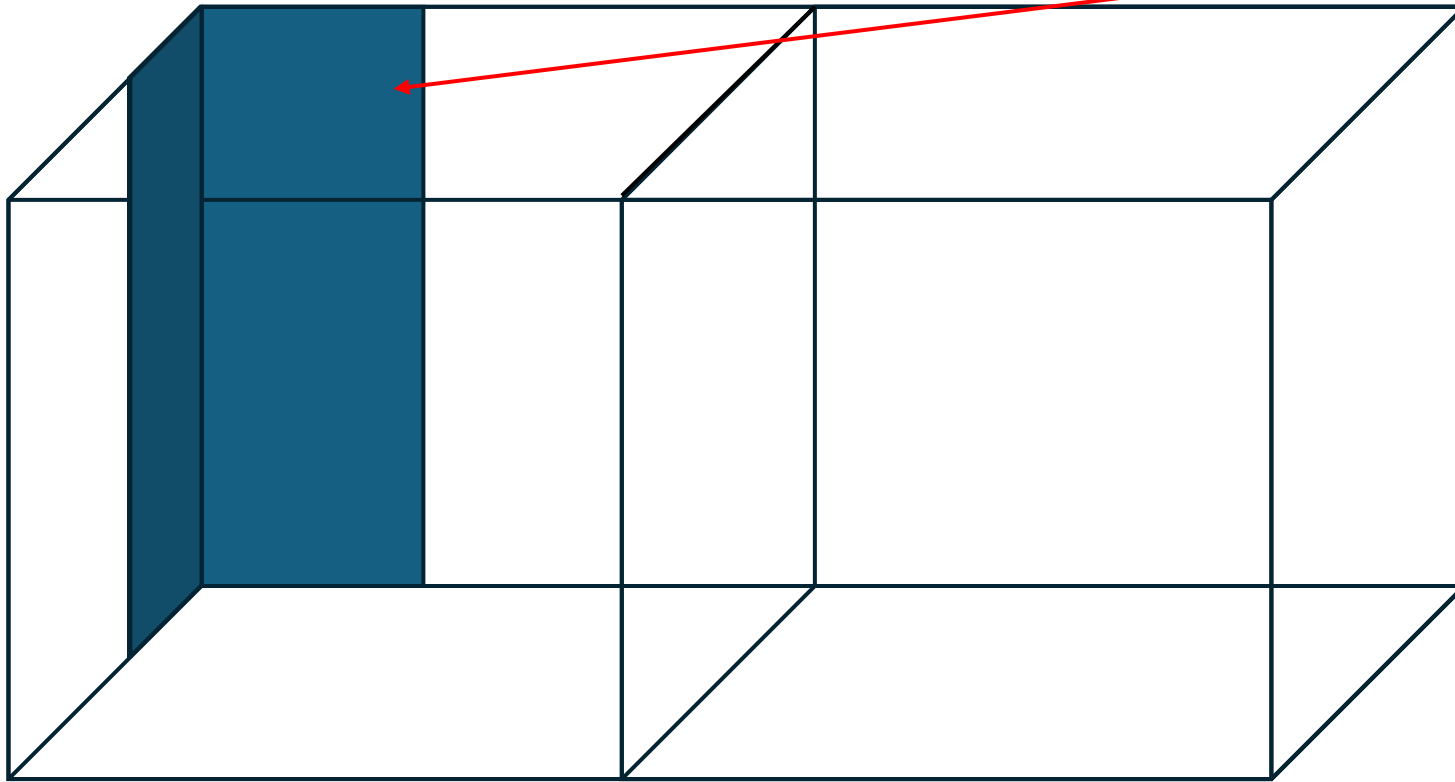
REPAIR AND REPLACE THE DAMAGE INNER LAYER OF 2 X CABIN CEILING AND WALL WITH 6 MM AND 9 MM 4' X 8' CEMENT BOARD



REMOVE DAMAGED AND INFECTED INNER CEILING WITH 6 MM CEMENT BOARD SCREWED TO UPPER FRAME

JOB # 2

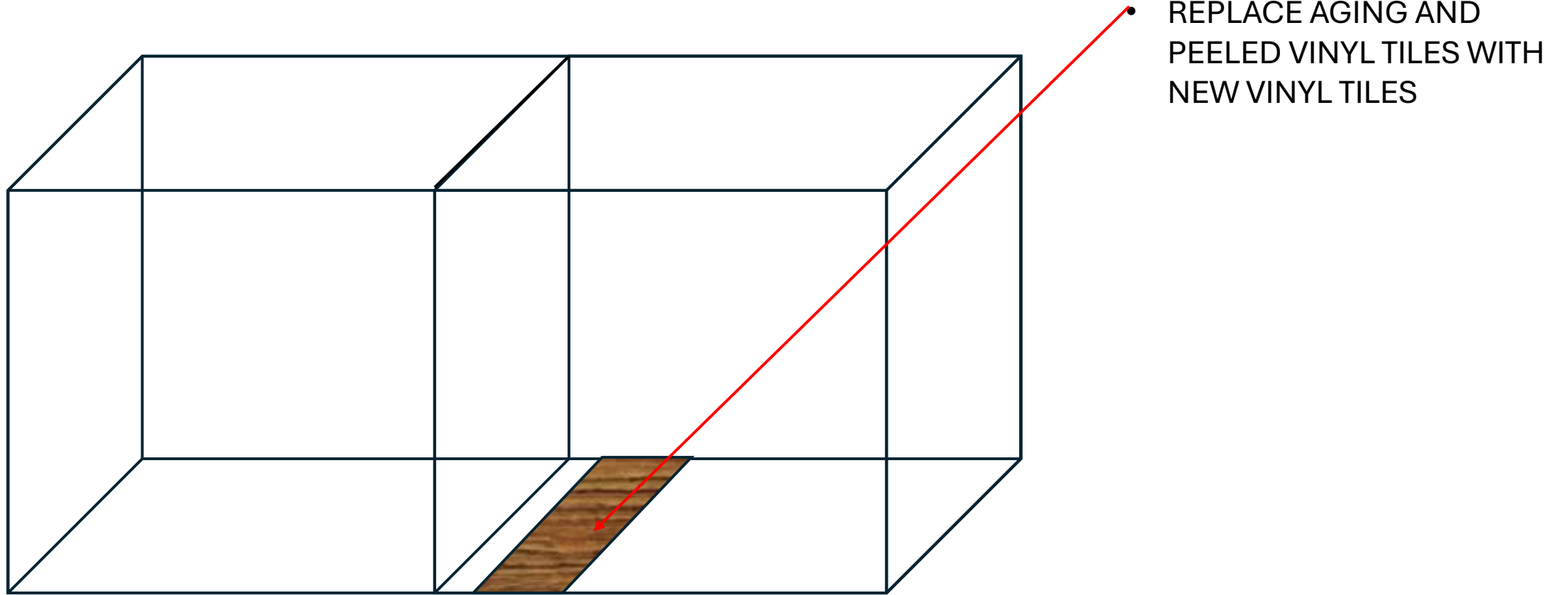
REPAIR AND REPLACE THE DAMAGE INNER LAYER OF 2 X CABIN CEILING AND WALL WITH 6 MM 4' X 8' CEMENT BOARD



• REMOVE DAMAGED AND INFECTED THE WHOLE INNER WALL (ON TWO UNIT CABIN) WITH 6 MM CEMENT BOARD SCREWED TO UPPER FRAME

JOB # 3

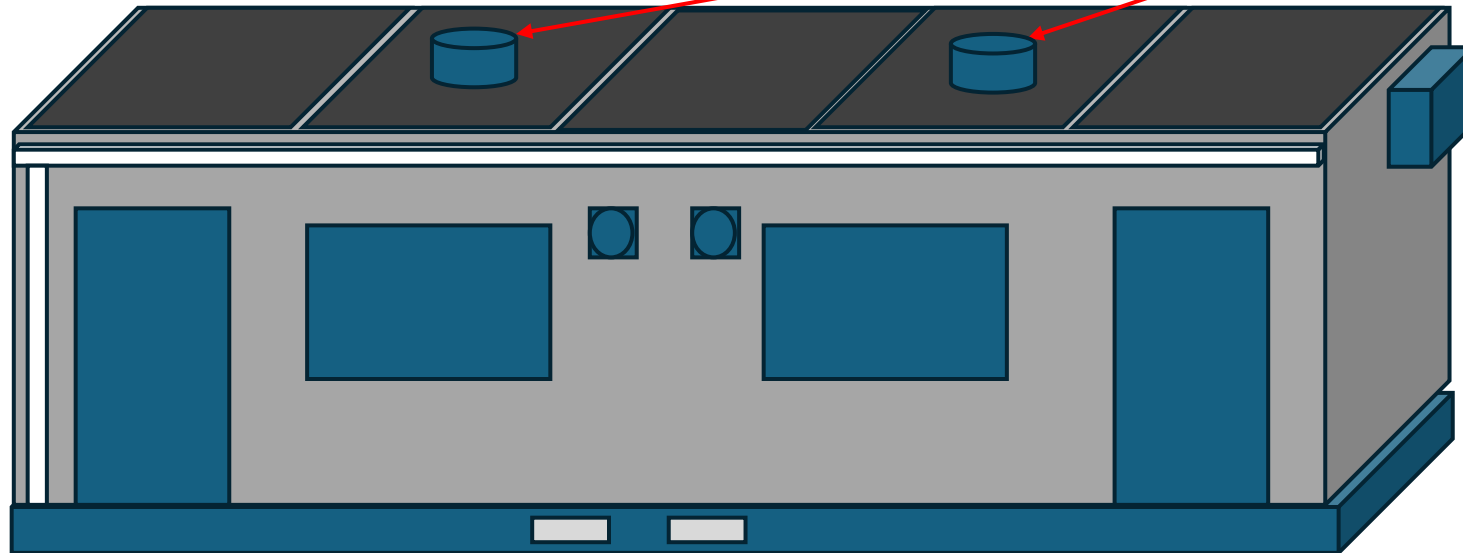
REPAIR AND REPLACE THE DAMAGE VINYL FLOORING WITH THE NEW VINYL TILES



JOB # 4

INSTALL ADDITIONAL 2 UNIT NEW CEILING VENTILATION FAN (1 UNIT ON EACH CABIN) AS REQUESTED

INSTALLING 2 UNIT OF
NEW CEILING FANS



JOB # 6

RELOCATE CABIN DOOR NUMBER 1 CABIN TO NEW LOCATION AS REQUESTED

